

CAT® UNDERCARRIAGE FOR MINING

ENGINEERED TO PERFORM

TAKE A CLOSER LOOK AT HOW CAT® UNDERCARRIAGE
BRINGS VALUE TO YOUR MINE SITE



INNOVATION THAT DELIVERS

Undercarriage represents about half of your machine's owning and operating costs, so it makes sense to invest in a system that will deliver the most value. With over 100 years of undercarriage innovation, the Cat® difference is in the design of our products.

Every undercarriage is precisely engineered to support businesses like yours, proven by the success of our customers. We use on-board technology like load analysis to develop better products that match your machine and your application, and lower your costs. Plus, all Cat undercarriage components are designed to work and wear as a system so you can move more material with less downtime.

You won't find genuine Cat-quality undercarriage anywhere else. Let's take a closer look.



CAT TRACK OPTIONS

	D9	D10	D11
GENERAL DUTY	•	•	•
HEAVY DUTY	•	•	•
HDXL	•	•	•

LARGE DOZER CAPABILITY

	D9	D10	D11
GENERAL DUTY	•	•	•
HEAVY DUTY	•	•	•
HDXL	•	•	•

ROTARY DRILL CAPABILITY

	MD6290/ SKR	MD6240/ SKFX	MD6420A/ SKS	MD6540/ SKL	MD6640/ 49HR
GLT (GREASE LUBRICATED TRACK)	•	•			
GLT WITH PPR2 (POSITIVE PIN RETENTION 2)			•	•	•

TRACK DRILL CAPABILITY

	MD5075/ R30C	MD5090 345-345S	MD5125SCH/ 5000C/CL	MD5150/ R60
GLT (GREASE LUBRICATED TRACK)	•	•	•	•

HYDRAULIC MINING SHOVEL CAPABILITY

	6015	6020	6030	6040	6050	6060	6090
GLT WITH PPR2	•	•					
CAT UNDERCARRIAGE		•					•
HEAVY DUTY	•	•	•	•	•	•	
HDXL						•	

ELECTRIC ROPE SHOVEL CAPABILITY

	7495HR	7495HD	7495HF
CAT UNDERCARRIAGE	•	•	•

LARGE DOZERS

Make your investment worthwhile with undercarriage for large dozers that use high-quality materials through a carefully controlled manufacturing process. This creates reliable, durable undercarriage components that deliver for large dozers, offering:

- + Predictable, manageable wear due to Cat undercarriage working and wearing as a system
- + Options for low- to high-impact applications to get increased performance and productivity
- + Reduced maintenance intervals and repair costs over the life of the equipment, leading to the lowest possible operating costs

LET'S TAKE A CLOSER LOOK.



ELECTRIC ROPE SHOVELS



Cat undercarriage for electric rope shovels is engineered to reduce contact stress and increase roller durability along with wear life. Extended wear life with Cat undercarriage reduces parts and service needs to increase uptime. Undercarriage options for electric rope shovels offer:

- + Larger diameter idler to reduce contact stress with the track link and a larger track roller to reduce contact stress with the track
- + Track pads designed for long wear life and maximum protection against breakage
- + Easy-to-service alloy pins that eliminate stress risers
- + Sprockets and tumblers that are highly tolerant of pitch extension and raised to provide optimum clearance of ground objects

HYDRAULIC MINING SHOVELS

Keep your production high and cost per ton low with Cat undercarriage for hydraulic mining shovels. With a heavy-duty track chain to handle high field loads and high-interface bushings to reduce pitch extension, Cat undercarriage is built to match the demands of your job while maintaining a long machine life. Undercarriage for hydraulic mining shovels comes with:

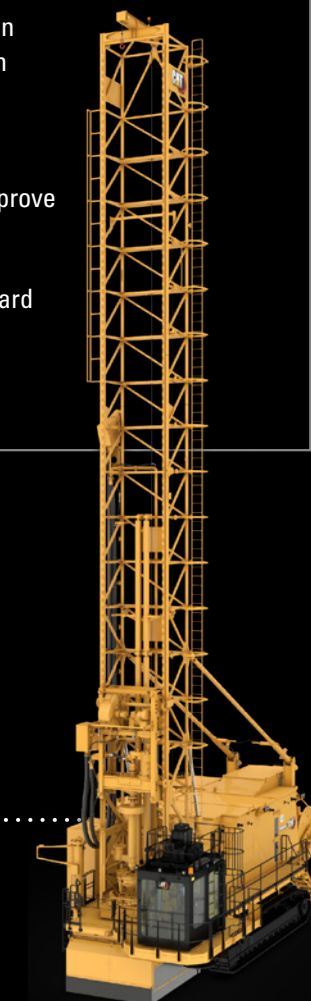
- + Sprockets built throughout the life of the entire undercarriage system with alloy steel casting and selective heat treatment
- + Heavier track chain to handle high field loads
- + Larger diameter track pins to increase strength
- + Reduced pitch extension wear to increase track chain life



ROTARY DRILLS

Cat undercarriage for rotary drills is built to increase undercarriage life under rigorous conditions in mining applications. With larger undercarriage components, stronger assemblies, and increased support against internal wear, undercarriage options for rotary drills offer:

- + Decreased track noise by eliminating metal-to-metal contact between pin and bushing
- + Tightly controlled seal motion for long internal pin/bushing wear life with Positive Pin Retention 2 (PPR2)
- + Sealed track joints to retain the grease added between the pin and bushing, minimizing internal wear
- + Double flange rollers to improve primary track guiding
- + Stronger, welded roller guard assembly to improve secondary track guiding





CAT GENERAL DUTY TRACK

Cat General Duty track is designed to handle low-to-moderate impact applications. It offers a variety of track shoe options which can bolster traction and flotation as well as overall undercarriage wear life. General Duty tracks offer a performance you can count on, with:

- + Excellent parts availability with your Cat dealer, allowing for a fast turnaround time
- + The ability to use Heavy Duty track shoes interchangeably to save time having to retrofit, keeping downtime to a minimum
- + PPR on D9-D11 models, preventing end-play generation and ensuring oil retention in high-impact conditions
- + Cat sealing system to maintain grease lubrication

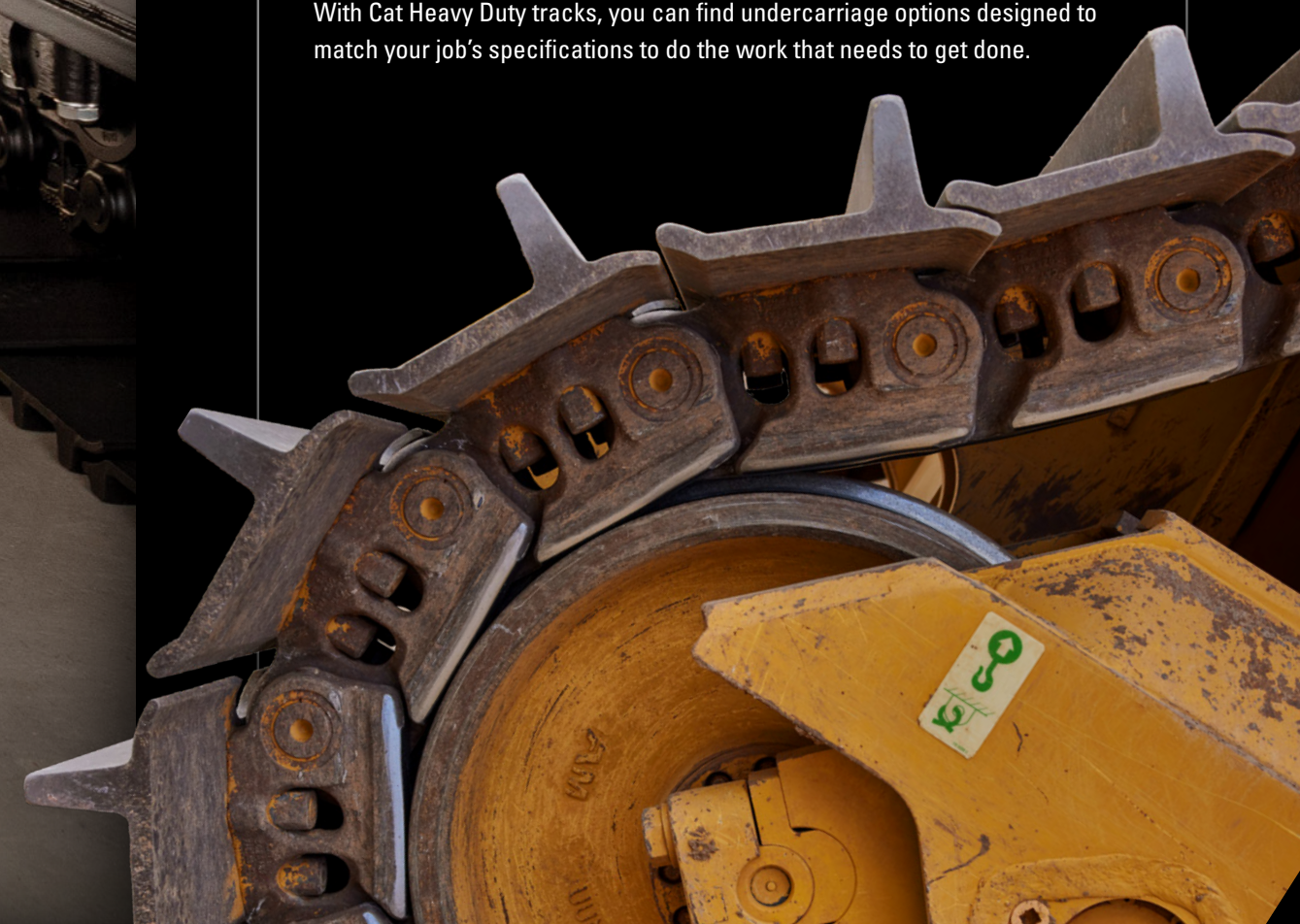
General Duty tracks are designed for applications with less than 5,000 hours of wear life and built to exacting specifications based on many machine hours operating in businesses like yours. With Caterpillar's century of undercarriage innovation as well as the reduced wear on pins and bushings and the maintained grease lubrication, it all adds up to a great combination of value and performance.

CAT HEAVY DUTY TRACK

It's a tough track for tough jobs. Our Heavy Duty track is designed for hard rock applications where impact levels range from moderate to high. Specifically engineered to match the requirements of medium-size machines with an elevated sprocket operating in demanding work environments, Cat Heavy Duty tracks are engineered to handle harsh impact applications and maintain a long life in abrasive conditions. Heavy Duty track offers:

- + Greater bushing retentions and deeper heat treatment for increased link strength
- + Positive Pin Retention which mechanically locks the link to the pin, resisting pin walking and link cracking while enabling maximum track life in high-impact and high-travel applications
- + End-coated bushing to reduce seal wear and ensure wet bushing turns
- + Rollers and idlers designed with industry-leading technology

Cat Heavy Duty tracks are engineered so you can get the most out of your Cat undercarriage, and Caterpillar never stops working to make them better. With Cat Heavy Duty tracks, you can find undercarriage options designed to match your job's specifications to do the work that needs to get done.

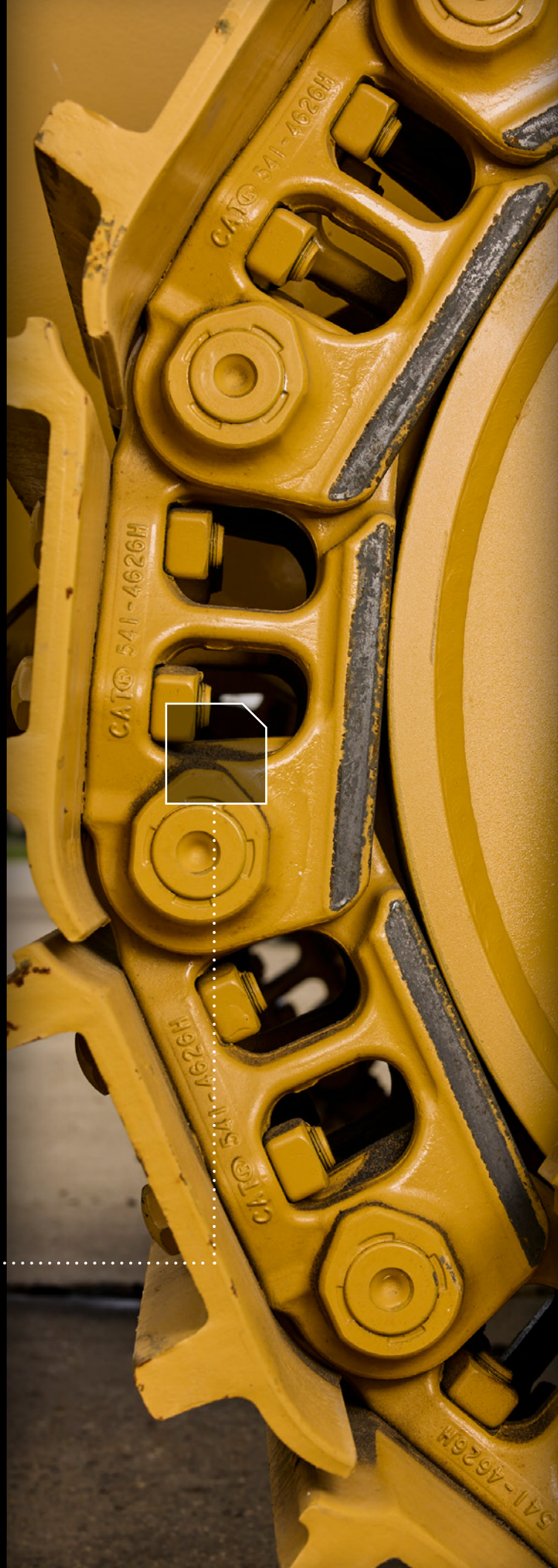


HEAVY DUTY EXTENDED LIFE UNDERCARRIAGE

Take your Heavy Duty Undercarriage to the next level. Designed for maximum durability, our Heavy Duty Extended Life (HDXL) with DuraLink™ undercarriage is engineered with additional wear material, heat treatment, and increased sealability after bushing turns. That means more uptime thanks to:

- + A design that can reduce scalloping and eliminate vibration
- + Added material and redesign at the nut seat window to eliminate cracking
- + Larger bushing to balance bushing-to-link life with XL Sealing technology to enhance oil retention
- + A crowned link design that places additional steel to deliver the biggest gains in wear life
- + Longer undercarriage life and lower cost per hour than competing brands

With an elite design, Cat HDXL offers significant wear life advantages to keep your production on track



SLEEVE BEARING TRACK

With more than ten years of proven performance in the field, the patented Cat Sleeve Bearing Track is designed to eliminate galling, increase wear life, and minimize downtime. Plus, with predictable wear, you get optimal performance at the lowest possible operating cost. The Sleeve Bearing Track gives you:

- + A design that can operate at higher speeds and greater loads
- + Eliminated galling between pins and bushings
- + Special coating for improved seal life
- + Hardened steel sleeve bearing positioned in vital areas between the pin and bushing to extend track life
- + Increased track reseal point to up to 8,000 hours on HDXL and 6,000 hours on Heavy Duty

Because our Sleeve Bearing Track extends undercarriage life, maintenance costs and unplanned downtime are also reduced. With more than ten years of proven performance, the Sleeve Bearing Track is designed to keep your machines working when you need them.



POSITIVE PIN RETENTION (PPR) TRACK

The PPR track design is recommended for applications that generate high-impact loading. Its design features machined links and pins that result in more uptime for your machine and more productivity for your business, including:

- + A design that prevents end-play generation (the outward movement of the links on the pin) through locking your joint to a predetermined factory end-play specification, resulting in more uptime
- + Specially machined links and pins that allow for the use of a metal retaining ring
- + Oil retention in high-impact conditions which reduces operational spending

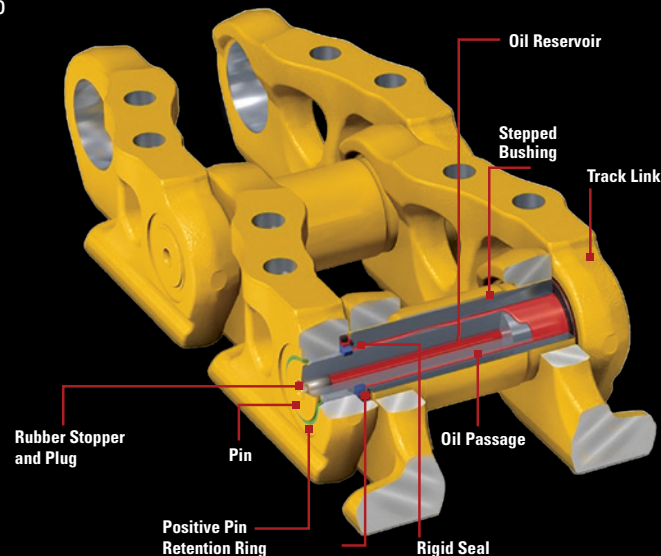
Use PPR on General Duty, Heavy Duty, and Heavy Duty Extended Life with DuraLink.

POSITIVE PIN RETENTION 2 (PPR2) TRACK

The PPR2 track is made of an exclusive design that extends track life and helps promote component reuse. PPR2 is specifically engineered to take on high-impact and high-travel applications by:

- + Mechanically locking the link to the pin to resist pin walking and link cracking for reliable sealing
- + Resisting end-play generation and link movement on the pin
- + Tightly controlling seal motion for long internal pin/bushing wear life
- + Resisting fatigue and crack formation with redesigned, stronger track links

Machines equipped with wide or single grouser shoes should consider PPR2.



GREASE LUBRICATED TRACK (GLT)

Cat GLT link assemblies are designed to improve undercarriage life on your mining machines. Each GLT track joint is engineered to offer:

- + Increased external wear life with larger bushing
- + Decreased track noise by eliminating metal-to-metal contact between pin and bushing
- + Improved sprocket wear life by keeping sprocket and link assembly pitch matched together for a longer period of operation
- + Grease lubrication to help prevent frozen or seized track joints

Ultimately, they're designed with grease between the pin and bushing to eliminate the contact and friction wear elements, resulting in a significant increase of internal wear life of the link assembly. Plus, Cat GLT options can be used for direct replacements for sealed link assemblies on Cat hydraulic excavator models.



UNDERCARRIAGE CUSTOMER SUCCESS STORIES



THE CUSTOMER MINE, UNITED STATES

THE PRODUCT: GENERAL DUTY UNDERCARRIAGE

THE CHALLENGE

- + 6060 machine had to be transported to the digging location
- + The customer needed to improve mobility, reliability, and durability to fight downtime

THE RESULTS

- + Two extra days of productivity
- + Extended tramability, improved reliability, and performance



THE CUSTOMER DIAMOND MINE, RUSSIA

THE PRODUCT: D9, GENERAL DUTY UNDERCARRIAGE

THE CHALLENGE

- + The DCF undercarriage had to be fully replaced
- + There was a need for increased durability and reduced downtime

THE RESULTS

- + Switching to Cat General Duty Undercarriage saved over \$10,000 a year
- + Extended track life, improved durability, and reduced maintenance downtime



THE CUSTOMER COAL MINE, AUSTRALIA

THE PRODUCT: D10, CAT HDXL UNDERCARRIAGE

THE CHALLENGE

- + Recurring issues with a third-party undercarriage, the components were major downtime and cost drivers
- + The customer needed to reduce maintenance downtime, lower maintenance costs, and increase durability

THE RESULTS

- + The new undercarriage is expected to last more than twice as long as the previous undercarriage
- + Reduced maintenance downtime and improved durability



THE CUSTOMER GOLD MINE, MEXICO

THE PRODUCT: HEAVY DUTY UNDERCARRIAGE

THE CHALLENGE

- + Improvements needed for 6060 track joints
- + The customer needed to reduce maintenance and downtime while increasing reliability and durability

THE RESULTS

- + 13,000 hours without maintenance needed, \$85,000 saved in downtime
- + Extended track life, improved reliability, and reduced maintenance downtime



DEALER UNDERCARRIAGE ASSURANCE PROGRAMS

UNDERCARRIAGE ASSURANCE GOLD

A leakage and breakage program for D11 Sleeve Bearing Track, applied after all other applicable coverages expire, lasting 4 years or 6,000 hours, whichever comes first.

UNDERCARRIAGE ASSURANCE GENUINE

A leakage and breakage program for all other large track-type tractor machines, applied after all other applicable coverages expire, lasting for 4 years or 4,000 hours, whichever occurs first.

ELECTRIC ROPE SHOVEL CAST CRAWLER SHOE ASSURANCE PROGRAM

PROGRAM 1

FOR THE 125-INCH CAST CRAWLER SHOE IN OIL SANDS APPLICATION

This program's coverage would begin at the same time as the standard machine warranty or new parts warranty terms and ends after 4 years or 24,000 hours, whichever happens first.

PROGRAM 2

FOR THE 79-INCH CAST CRAWLER SHOE USED ON THE 7495 HR AND THE 84-INCH CAST CRAWLER SHOE USED ON THE 7495 HD

The coverage for these programs begins at the same time as the standard machine warranty or new parts warranty and ends after 4 years or 16,000 hours, whichever happens first.

HYDRAULIC MINING SHOVEL CAST CRAWLER SHOE ASSURANCE PROGRAM

This is a wear and breakage program for the HD cast crawler shoes used on 6030-6060. Coverage begins at the same time as the standard machine warranty or new parts warranty terms and ends after 3 years or 15,000 hours, whichever happens first.

To get support beyond the standard new machine or parts warranties, talk to your Cat dealer and get full details about coverage for your specific undercarriage configuration.

COMPATIBLE SOLUTIONS

To get the most out of your Cat Undercarriage, we've devised a selection of compatible solutions for any undercarriage configuration.

UNDERCARRIAGE ASSURANCE PROGRAMS

Developed to provide you with the lowest cost-per-hour undercarriage systems, our assurance programs offer support beyond the standard new machine or parts warranties. These offerings cover all major moving undercarriage components on Cat dozers, track loaders, and hydraulic excavators.

CUSTOMER VALUE AGREEMENTS (CVAs) FOR MINING

These plans allow you to get the most from your investment by maximizing equipment health. CVAs for mining are extremely flexible, whether you're looking to streamline maintenance, need to adhere to a specific budget, or anything in between, there's a CVA for that.

CUSTOM TRACK SERVICE (CTS)

Accurately monitor your undercarriage performance and predict wear rates in order to plan maintenance and fit downtime into your schedule. CTS can be completed on your jobsite which allows you to make informed decisions, keep costs low, and make efficient use of time.

WORLDWIDE PARTS AVAILABILITY

Within about 24-hours, our parts distribution network can make Cat parts available to you, wherever you're located.

CONSULT WITH YOUR CAT DEALER

Cat dealers are trained to be undercarriage experts and can support you in making the best decisions for your machine, application, owning, and operating needs.

Working with Caterpillar means more than just reaping the benefits of quality equipment, it means benefiting from quality relationships with Cat professionals who guide you in choosing the best solution to support your business. Learn more from your Cat dealer.



TOGETHER, WE'RE MINING BETTER

We're committed to helping customers mine better; whether through equipment or dealer-offered services. It's our mission to achieve the highest levels of safety, efficiency, productivity, and sustainability.

Thank you for being a Caterpillar customer. It's our pleasure to support your operation.



XXXXXXX

© 2024 Caterpillar. All Rights Reserved. CAT, CATERPILLAR, LET'S DO THE WORK, their respective logos, "Caterpillar Corporate Yellow", the "Power Edge" and Cat "Modern Hex" trade dress as well as corporate and product identity used herein, are trademarks of Caterpillar and may not be used without permission.

