

120 GC

MOTOR GRADER



Engine Power
Operating Weight

115-128 kW (154-171 hp)
14 496 kg (31,958 lb)

Cat® C4.4 engine meets U.S. EPA Tier 4 Final, EU Stage V, and Korea Stage V emission standards.



CAT[®] 120 GC

GO THE DISTANCE

The **Cat 120 GC** Motor Grader combines reliable performance with cost-efficient owning and operating. Servicing the machine is easy with grouped filter locations. Comfort options, including a heating/cooling system or air suspension seat, keep you productive throughout the day.



GRADING THE ROAD AHEAD

The Cat 120 GC Motor Grader gets you to the ideal grade with simple-to-operate, quick, and accurate hydraulic controls.

- + CONSISTENT AND RELIABLE PERFORMANCE TO GET THE JOB DONE
- + CAB OPTIONS FOR IDEAL COMFORT
- + EASILY MAINTAIN AND SERVICE

CAB DESIGNED FOR COMFORT

Boost productivity and efficiency with cab comfort options.

LOW COST-PER-HOUR OPERATION

Extended maintenance cycles, demand fan, and optional reversing fan keep your overall costs down.

RELIABLE PERFORMANCE

Get precise, consistent blade movement with the Cat drawbar, circle, moldboard (DCM), and controls. All-wheel drive (AWD) option gives you more traction and maneuverability.

WORK MORE... FUEL LESS

Get up to 5% fuel savings using eco mode



SCENARIO:

COMPARED TO NOT USING ECO MODE



CAT LINK TECHNOLOGY

TAKES THE GUESSWORK OUT OF MANAGING YOUR EQUIPMENT

Cat Link telematics technology helps take the complexity out of managing your job sites by gathering data generated by your equipment, materials, and people and serving it up to you in customizable formats.



PRODUCT LINK™

Product Link™ collects data automatically and accurately from your assets – any type and any brand. Information such as location, hours, fuel usage, productivity, idle time, maintenance alerts, diagnostic codes, and machine health can be viewed online through web and mobile applications.

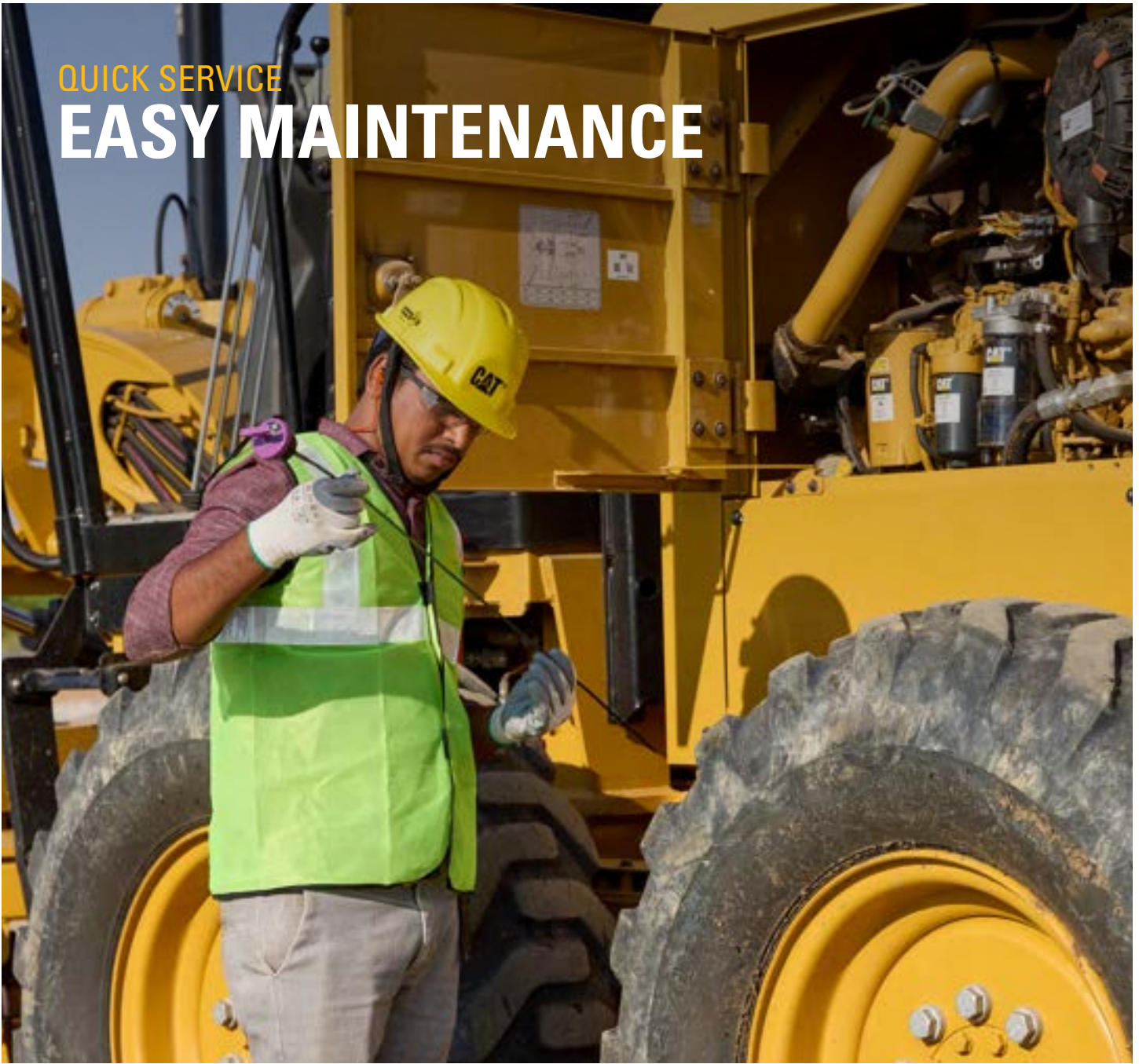


VISIONLINK®

Access information anytime, anywhere with VisionLink®. Use it to make informed decisions that boost productivity, lower costs, simplify maintenance, and improve safety and security on your job site. With different subscription level options, your Cat dealer can help you configure exactly what you need to connect your fleet and manage your business without paying for extras you don't want. Subscriptions are available with cellular or satellite reporting (or both).

QUICK SERVICE

EASY MAINTENANCE



REVERSING FAN

Spend less time cleaning the cooling system with the reversing fan option. Cleaning at least once a week helps reduce costs and boost uptime.

LONGER SERVICE INTERVALS

Reduce your operating expenses and spend more time working with extended filter intervals.

GROUPED LOCATION

Service your machine faster with easy access filters in a central location so you can do preventative maintenance quickly and move on to the next job.

ADJUSTABLE SUPPORT

Enter the cab easily and pull the control console into place. The air suspension seat option is easily adjustable and helps to improve posture, add comfort, and reduce fatigue.

VENTILATION

The heating and cooling system option helps you stay comfortable throughout the day.

DIGITAL BLADE SLOPE METER

Reduce the need for manual grade checking to keep you and your work site safer. The optional digital blade slope meter integrates directly onto your information display screen.



ADJUSTABLE OPTIONS

COMFORT WHERE IT COUNTS



CONVENIENT DISPLAY

View machine, diagnostic, and gear information in front of you on the dash display.



EXTRAORDINARY VISIBILITY

Side- and rearview mirrors give you a broad view of the job site. The rearview camera option provides a wide view behind the machine for better visibility.



PRECISE CONTROLS

Become one with your machine using fast, accurate hydraulic controls to power through the job. The powershift transmission changes on the go to minimize shifting gears. AWD gives you more traction to handle all terrain.



EASY ON AND OFF

Work safely using three points of contact when entering and exiting the machine with strategically placed walkways and grab rails.

SEE YOUR INVESTMENT GO FURTHER DESIGNED TO LAST

MAXIMIZE COMPONENT LIFE

Reduce daily greasing requirements and repairs to your circle and pinion with the circle saver option. The grease fitting is easy to access and maintain.

REDUCE DAMAGE

The standard transmission guard defends against damage from underneath the machine. Keep your machine running smoothly in demanding applications with optional guarding for under the cab and fenders.

PRESERVE YOUR MACHINE

The circle drive slip clutch option protects your pinion drive and circle teeth from damage.

ALL-WHEEL DRIVE OPTION

The AWD option assists with traction and maneuvering in loose material. The increased power with AWD handles rough terrain with extra traction for better productivity.

MORE THAN MACHINES

When you buy Cat equipment, you're getting so much more than the machine. You're also getting the support of a best-in-class dealer network, backed by a range of flexible solutions, technology, tools, and more. It's customer value agreements (CVAs) and financing solutions. It's cost-saving service and repair options. It's quality parts and precision components. It's rental and used equipment options. It's all about support that's built around your success.

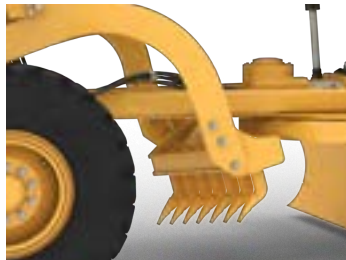




MOVE MORE
WITH CAT ATTACHMENTS



LIFT GROUP



MID MOUNT SCARIFIER



RIPPER



FRONT BLADE

ENHANCE YOUR PRODUCTIVITY

From a ripper to front blade, expand the versatility of your machine by utilizing Cat attachments, which are designed to fit your needs for improved reliability, performance, safety, and stability. The front lift group is used to attach front blades and is available from factory.

TECHNICAL SPECIFICATIONS

See cat.com for complete specifications.

| POWERTRAIN | | |
|--------------------------------|--|-----------------------|
| Engine Model | Cat® C4.4 | |
| | Meets U.S. EPA Tier 4 Final, EU Stage V, and Korea Stage V emission standards. | |
| Net Engine Power | 128 kW | 171 hp |
| Power Range – Net | 115-128 kW | 154-171 hp |
| AWD Range – Net | 121-128 kW | 164-171 hp |
| Net Engine Power (AWD) | 128 kW | 171 hp |
| Displacement | 4.4 L | 268.5 in ³ |
| Bore | 105.0 mm | 4.1 in |
| Stroke | 127.0 mm | 5.0 in |
| Torque Rise (ISO 9249:2007) | 21% | |
| Maximum Torque (ISO 9249:2007) | 738 N•m | 544 lb-ft |
| Number of Cylinders | 4 | |
| Derating Altitude | 3000 m | 9,842 ft |
| Standard Capability | 50°C | 122°F |

- Net power is tested per ISO 9249:2007, SAE J1349:2011 and EEC 80/1269 standards in effect at the time of manufacture.
- Net power available at the flywheel when the engine is equipped with fan, air cleaner, aftertreatment, and alternator with engine speed at 2,000 rpm.

| MACHINE WEIGHT | | |
|-----------------------|-----------|-----------|
| Weight* | 14,496 kg | 31,958 lb |
| All-Wheel Drive (AWD) | 15,042 kg | 33,162 lb |

* Typically equipped operating weight includes tires, push block, ripper, bottom guard, operator, and full fluids and fuel.

| SERVICE REFILL CAPACITIES | | |
|----------------------------------|-------|----------|
| Fuel Tank | 269 L | 71 gal |
| Circle Drive with Slip Clutch | 7.0 L | 1.8 gal |
| Circle Drive without Slip Clutch | 1.5 L | 0.4 gal |
| Engine Crankcase | 7.6 L | 2.0 gal |
| Cooling System | 39 L | 10.3 gal |
| Hydraulic System | 55 L | 14.5 gal |
| Transmission | 17 L | 4.5 gal |

| BLADE RANGE | | | |
|---------------------------|--------|---------|-----|
| Circle Center Shift | | | |
| Right | 656 mm | 25.8 in | |
| Left | 656 mm | 25.8 in | |
| Moldboard Side Shift | | | |
| Right | 663 mm | 26.1 in | |
| Left | 512 mm | 20.2 in | |
| Blade Tip Range | | | |
| Forward | | | 40° |
| Backward | | | 5° |
| Maximum Lift Above Ground | 410 mm | 16.1 in | |
| Maximum Depth of Cut | 775 mm | 30.5 in | |

| MOLDBOARD | | | |
|--------------------|--------|---------|--|
| Blade Width | 3.7 m | 12 ft | |
| Blade Height | 580 mm | 20 in | |
| End Bit Width | 152 mm | 6 in | |
| Cutting Edge Width | 152 mm | 6 in | |
| Arc Radius | 413 mm | 16.3 in | |
| Throat Clearance | 112 mm | 4.7 in | |

| DIMENSIONS | | | |
|---------------------------------|-----------|----------|--|
| Length of Machine* | 9941 mm | 391.4 in | |
| Maximum Height with Attachments | 3787.8 mm | 149.1 in | |
| Width | 2402 mm | 94.6 in | |
| Width (AWD) | 2549.9 mm | 100.4 in | |

*Typically equipped with push block and ripper.

| AIR CONDITIONING SYSTEM | |
|---|--|
| The air conditioning system on this machine contains the fluorinated greenhouse gas refrigerant R134a (Global Warming Potential = 1430). The system contains 2.0 kg of refrigerant which has a CO ₂ equivalent 2.86 metric tonnes. | |

STANDARD & OPTIONAL EQUIPMENT

Standard and optional equipment may vary. Consult your Cat® dealer for details. Not all options available in all regions.

| POWERTRAIN | STANDARD | OPTIONAL |
|--|----------|----------|
| Cat C4.4 engine | • | |
| Eco mode | • | |
| Demand fan | • | |
| Reversing fan | | • |
| All-wheel drive (AWD) | | • |
| CAB | STANDARD | OPTIONAL |
| Standard seat | • | |
| Mechanical suspension seat | | • |
| Air suspension seat | | • |
| Steering wheel/lever controls | • | |
| Rollover protective structure/falling objects protective structure (ROPS/FOPS) | • | |
| Heating/cooling cab system | | • |
| Rear wiper | | • |
| Base cab | • | |
| Cab plus | | • |
| Low profile cab | | • |
| Four-point safety harness seat belt | | • |
| Information display screen | • | |
| Halogen lighting | | • |
| Entertainment radio ready | | • |
| Cell phone holder | • | |
| Rear window screen | | • |
| Front wipers | • | |
| Digital blade slope meter | | • |
| Product Link™ | • | |
| DRAWBAR CIRCLE MOLDBOARD | STANDARD | OPTIONAL |
| Standard drawbar circle moldboard (DCM) | • | |
| Circle drive slip clutch | | • |
| Circle saver | | • |
| 3.7 m (12') moldboard | • | |
| 3.1 m (10') moldboard | | • |
| 4.3 m (14') moldboard | | • |

| SAFETY AND SECURITY | STANDARD | OPTIONAL |
|---|----------|----------|
| Parking brake | • | |
| Signaling/warning horn | • | |
| Rearview mirror | • | |
| Rearview camera | | • |
| Hydraulic brakes – integrated work port pressure relief, integrated dead engine implement lower | • | |
| Secondary steering system | | • |
| Side-view mirrors | • | |
| Walkways and grab rails | • | |
| ATTACHMENTS | STANDARD | OPTIONAL |
| Push block | | • |
| Ripper | | • |
| Scarifier | | • |
| Front blade | | • |
| Front lift group from factory | | • |

For more complete information on Cat products, dealer services and industry solutions, visit us on the web at www.cat.com.

© 2024 Caterpillar. All Rights Reserved.

VisionLink is a trademark of Caterpillar Inc., registered in the United States and in other countries.

Materials and specifications are subject to change without notice. Featured machines in photos may include additional equipment. See your Cat dealer for available options.

CAT, CATERPILLAR, LET'S DO THE WORK, their respective logos, Product Link, "Caterpillar Corporate Yellow", the "Power Edge" and Cat "Modern Hex" trade dress as well as corporate and product identity used herein, are trademarks of Caterpillar and may not be used without permission.
www.cat.com www.caterpillar.com

AEXQ3736-00 (06-2024)
Build Number 02A
(Europe, N Am,
Korea, Colombia)

