



D7

Track-Type Tractor

Technical Specifications

Configurations and features may vary by region. Please consult your Cat® dealer for availability in your area.

Table of Contents

D7 Track-Type Tractor

Specifications	3
Engine	3
Fluid/Refill Capacities	3
Air Conditioning System	3
Transmission	3
Drawbar Pull	3
Hydraulic Controls	4
Advanced Cabin Filtration	4
Standards	4
Sound Level	4
Test Method	4

D7 Semi-Universal (SU)/Universal (U) Dimensions	5
Blades	5
D7 Low Ground Pressure (LGP) Dimensions	6
Blades	6
Ripper	7
Winch	7
Track Shoes	7
Dozer Technology Features	8

Standard and Optional Equipment	9
Environmental Declaration	12

D7 Track Type Tractor – Waste Handler Configuration

Key Features and Benefits	13
D7 Waste Handler Features	14
Specifications	15
Engine	15
Fluid/Refill Capacities	15
Air Conditioning System	15
Transmission	15
Drawbar Pull	15
Hydraulic Controls	16
Advanced Cabin Filtration	16

Standards	16
Sound Level	16
Test Method	16
D7 Waste Handler	17
Blades	17
D7 LGP Waste Handler	18
Blades	18
Ripper	19
Track Shoes – Heavy Duty Extended Life (HDXL)	19
Standard and Optional Equipment	20

(continued on next page)

D7 Track-Type Tractor Table of Contents

Table of Contents *(continued)*

D7 Track-Type Tractor – Pipeline/Forestry Configuration

Key Features and Benefits	23	Sound Level	26
D7 Pipeline/Forestry Features	24	Test Method	26
Specifications	25	D7 Pipeline/Forestry	27
Engine	25	Blades	27
Fluid/Refill Capacities	25	D7 Pipeline/Forestry LGP	28
Air Conditioning System	25	Blades	28
Transmission	25	Ripper	29
Drawbar Pull	25	Winch	29
Hydraulic Controls	26	Track Shoes	29
Advanced Cabin Filtration	26	Standard and Optional Equipment	30
Standards	26		

D7 Track-Type Tractor Specifications

Engine

Engine Model	Cat® C9.3B	
Emissions	U.S. EPA Tier 4 Final/ EU Stage V/Japan 2014/ Korea Tier 5/China Nonroad Stage IV	
Power Train	Fully Automatic 4-Speed	
Net Power (2,200 rpm)		
ISO 9249/SAE J1349	197 kW	265 hp
ISO 9249 (DIN)	268 mhp	
Engine Power (1,400 rpm)		
ISO 14396	230 kW	309 hp
ISO 14396 (DIN)	313 mhp	
Gross Power: SAE J1995:2014	233 kW	312 hp
Bore	115 mm	4.5 in
Stroke	149 mm	5.9 in
Displacement	9.3 L	567.52 in ³

- Net power advertised is the power available at the flywheel when the engine is equipped with fan, air cleaner, muffler, and alternator.
 - Advertised power is tested per the specified standard in effect at the time of manufacture.
 - No derating required up to 3261 m (10,700 ft) altitude, beyond 3261 m (10,700 ft) automatic derating occurs.
 - Cat diesel engines are required to use ULSD (ultra-low sulfur diesel fuel with 15 ppm of sulfur or less) or ULSD blended with the following lower-carbon intensity fuels up to:
 - ✓ 20% biodiesel FAME (fatty acid methyl ester)*
 - ✓ 100% renewable diesel, HVO (hydrotreated vegetable oil) and GTL (gas-to-liquid) fuels
- Refer to guidelines for successful application. Please consult your Cat dealer or “Caterpillar Machine Fluids Recommendations” (SEBU6250) for details.

*Engines with no aftertreatment devices can use higher blends, up to 100% biodiesel.

Fluid/Refill Capacities

Fuel Tank	465 L	122.8 gal
Diesel Exhaust Fluid (DEF) Tank	44 L	11.6 gal
Cooling System	62 L	16.4 gal
Engine Crankcase*	28 L	7.4 gal
Power Train	187 L	49.4 gal
Final Drives (each)	13 L	3.4 gal
Roller Frames Standard/LGP (each)		
Minimum	85 L	22.5 gal
Maximum	96 L	25.4 gal
Pivot Shaft Compartment	21 L	5.5 gal
Hydraulic System	144 L	38 gal

*with oil filter

Air Conditioning System

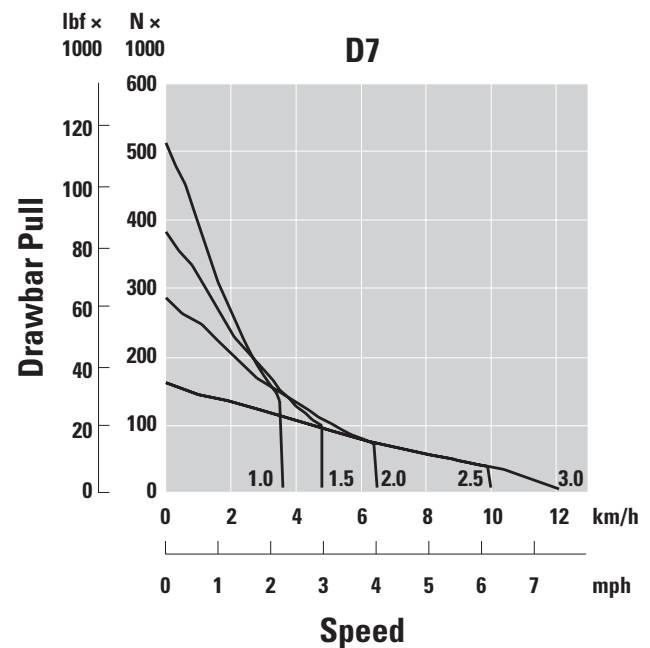
The air conditioning system on this machine contains the fluorinated greenhouse gas refrigerant R134a (Global Warming Potential = 1430). The system contains 1.36 kg of refrigerant which has a CO₂ equivalent of 1.946 metric tonnes.

Transmission

1.0 Forward	3.5 km/h	2.17 mph
1.5 Forward	4.8 km/h	2.98 mph
2.0 Forward	6.4 km/h	3.97 mph
2.5 Forward	9.0 km/h	5.59 mph
3.0 Forward	11.4 km/h	7.08 mph
1.0 Reverse	3.5 km/h	2.17 mph
1.5 Reverse	4.8 km/h	2.98 mph
2.0 Reverse	6.3 km/h	3.91 mph
2.5 Reverse	8.5 km/h	5.28 mph
3.0 Reverse	11.4 km/h	7.08 mph

Drawbar Pull

1.0 Forward	659.2 kN	148,194 lbf
1.5 Forward	490.8 kN	110,336 lbf
2.0 Forward	366.1 kN	82,303 lbf
2.5 Forward	X kN	X lbf
3.0 Forward	205.8 kN	46,266 lbf



D7 Track-Type Tractor Specifications

Hydraulic Controls

Bulldozer Relief Valve Setting	32 500 kPa	4,714 psi
Maximum Operating Pressure		
Implement	24 040 kPa	3,487 psi
Steering	38 000 kPa	5,511 psi
Tilt Cylinder	24 040 kPa	3,487 psi
Lift Cylinder	24 040 kPa	3,487 psi
Ripper (Lift)	24 040 kPa	3,487 psi
Ripper (Pitch)	24 040 kPa	3,487 psi
Winch	31 000 kPa	4,496 psi

Pump

Pump Type	Piston-type, Variable Displacement	
Pump Output (Steering)	267 L/min	70.5 gal/min
Pump Output (Implement)	220 L/min	58.1 gal/min
Tilt Cylinder Rod End Flow	132 L/min	34.9 gal/min
Tilt Cylinder Head End Flow	170 L/min	44.9 gal/min

- Steering Pump output measured at 2,364 rpm (pump speed) and 30 000 kPa (4,351 psi).
- Implement Pump output measured at 1,900 rpm and 6895 kPa (1,000 psi).
- Electro-hydraulic pilot valve assists operations of ripper and dozer controls. A standard hydraulic system includes four valves.
- Complete system consists of pump, tank, filter, oil cooler, valves, lines, and control levers.

Advanced Cabin Filtration

Operator Cabin

- Distributed HVAC ducting with automatic temperature control and blower speed provides ultimate operator comfort with less user input.
- Reduced maintenance of the condenser core with automatic reversing fans.
- Cat Advanced Cabin Filtration is standard.

Cat Advanced Cabin Filtration

- Operator protection from respirable particulate (0.3-10-micron size).
- Sustainably pressurized cab (U.S. Silica compliant).
- Reduced maintenance with longer life, high efficiency filters.
- Protection for all cabin components: electronics, etc.
- Helps meet U.S. Occupational Safety and Health Administration Silica Rule Table 1 requirements for operator cabs.
- Multi-tiered filter offerings for optional efficiency upgrades. Contact Cat dealer for availability.
 - MERV 16 – Standard Equipment
 - HEPA
 - Activated Carbon + HEPA
 - ABEK1 + HEPA

Standards

Sound Level Information

- Hearing protection may be needed when the machine is operated with an open operator station, in a noisy environment, with a cab that is not properly maintained, or when the doors and windows are open for extended periods of time.

Sound Level	Test Method	
Operator Sound Pressure Level	77 dB(A)	"ISO 6396:2008" ⁽¹⁾
	77 dB(A) *	
Exterior Sound Pressure Level	112 dB(A)	"ISO 6395:2008" ⁽²⁾
	112 dB(A) *	"ISO 6395:1988" ⁽²⁾

*For machines required to meet applicable regional regulations of Ukraine, United Kingdom, and Countries that Adopt the "EU Directive"; or machines equipped with the sound-suppression package.

⁽¹⁾The measurement was conducted at 70% of the maximum engine cooling fan speed. The sound level may vary at different engine cooling fan speeds. The measurement was conducted with the cab doors and the cab windows closed. The cab was properly installed and maintained.

⁽²⁾The measurement was conducted at 70% of the maximum engine cooling fan speed. The sound level may vary at different engine cooling fan speeds.

- The sound levels listed above include both measurement uncertainty and uncertainty due to production variation.

Rollover Protective Structure (ROPS)/Falling Object Protective Structure (FOPS)

- ROPS meets the following criteria: ISO 3471:2008.
- FOPS meets the following criteria: ISO 3449:2005 Level II.

Brakes

- Brakes meet the standard ISO 10265:2008.

D7 Track-Type Tractor Specifications

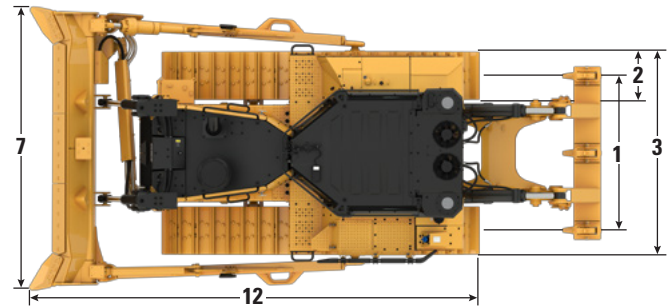
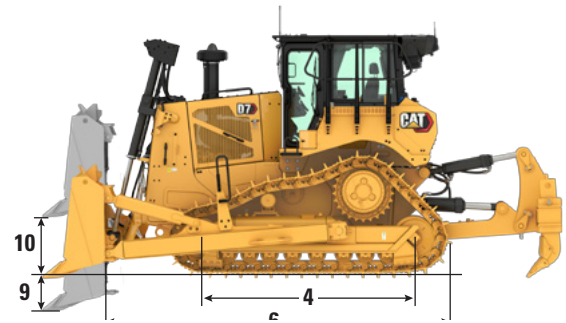
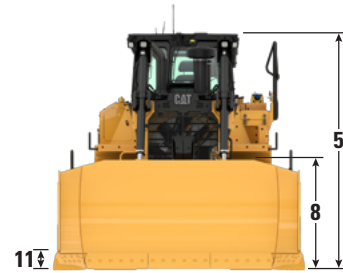
D7 SU/U Dimensions

Operating Weight ¹	30 731 kg	67,750 lb
Shipping Weight ²	27 018 kg	59,564 lb
Ground Pressure (ISO 16754)	74.2 kPa	10.76 psi
Undercarriage	41 Sections with 8 Bottom Rollers	
1 Track Gauge	1.98 m	6'6"
2 Width of Track Shoe (Standard)	610 mm	24.0 in
3 Width of Tractor (without trunnions)	2.79 m	9' 2"
4 Length of Track on Ground	3.02 m	9'11"
Ground Contact Area (ISO 16754)	4.06 m ²	43.7 ft ²
Grouser Height (Extreme Service)	82 mm	3.2 in
Ground Clearance	442 mm	17.4 in
5 Machine Height ³ (Tip of Grouser to top of Product Link Antenna)	3.44 m	11'3"
Top of Cab ¹	3.43 m	11'3"
Top of Guardrail	3.32 m	10'11"
6 Length of Basic Tractor	4.66 m	15'3"
Add the following to the total length of the machine when these attachments are installed.		
Drawbar	276 mm	10.9 in
Ripper	1570 mm	61.8 in
Waste Striker Box	450.5 mm	17.7 in
Winch	749.7 mm	29.5 in

¹Operating weight includes SU blade, lubricants, coolant, full fuel tank, ROPS/FOPS cab, ripper, and 75 kg (165 lb) operator.

²Shipping weight includes blade lift cylinders, lubricants, coolant, 10% fuel, ROPS/FOPS cab, and ripper.

³Machine height from tip of grouser to top of Product Link™ Antenna. For sweeps, add 60 mm (2.4 in) to overall machine height. With Moderate Service, subtract 11 mm (0.4 in). Forestry adds additional 120 mm (4.7 in) of height to the HVAC guard. When Cat Grade with 3D antennas are installed there is no added machine height.



Standard SU/U model shown

Blades

Type	Semi-Universal (SU)		Universal (U)	
Capacity (ISO 9246)	7.42 m ³	9.70 yd ³	8.59 m ³	11.24 yd ³
7 Width across End bits	3640 mm	143.3 in	3926 mm	154.6 in
Width without End bits	3536 mm	139.2 in	3822 mm	150.5 in
8 Height	1560 mm	61.4 in	1560 mm	61.4 in
9 Dig Depth ⁴	580 mm	22.8 in	580 mm	22.8 in
10 Lift Height ⁴	1210 mm	47.6 in	1210 mm	47.6 in
11 Maximum Tilt at Blade Corner ⁴	500 mm	19.7 in	565 mm	22.2 in
Maximum Tilt Angle ⁴	8.5°		8.5°	
Pitch Adjustment	±3.0°		±3.0°	
12 Length of Machine with Blade	5.79 m	19'0"	6.03 m	19'9"
Blade Weight (blade + push arms installed) ⁵	3340 kg	7,363 lb	3570 kg	7,871 lb

⁴Blade in neutral tilt position

⁵Includes blade tilt cylinder

Cat FirstCut™ cutting edges are available for Semi-Universal (SU) blades. FirstCut edges provide superior penetration in tough compacted, rocky or frozen soils resulting in improved payload and productivity. Consult with your Cat dealer for more benefits and details.

D7 Track-Type Tractor Specifications

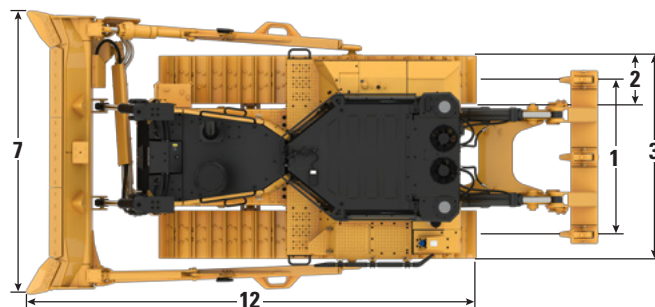
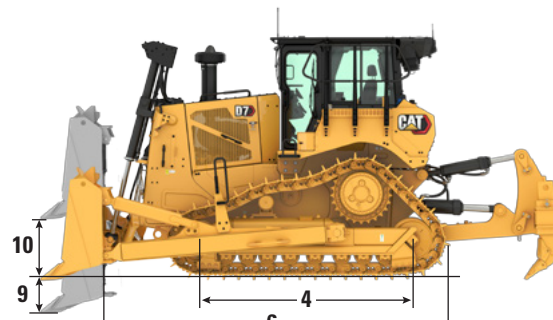
D7 LGP Dimensions

Operating Weight ¹	29 589 kg	65,233 lb
Shipping Weight ²	25 876 kg	57,047 lb
Ground Pressure (ISO 16754)	44.5 kPa	6.45 psi
Undercarriage	43 Sections with 9 Bottom Rollers	
1 Track Gauge	2.24 m	7' 4"
2 Width of Track Shoe (Standard)	915 mm	36.0 in
3 Width of Tractor (without trunnions)	3.15 m	10'4"
4 Length of Track on Ground	3.24 m	10'8"
Ground Contact Area (ISO 16754)	6.51 m ²	70.1 ft ²
Grouser Height (Moderate Service)	74 mm	2.9 in
Ground Clearance	442 mm	17.4 in
5 Machine Height ³ (Tip of Grouser to top of Product Link Antenna)	3.43 m	11'3"
Top of Cab ¹	3.32 m	10'11"
Top of Guardrail	3.31 m	10'10"
6 Length of Basic Tractor	4.66 m	15'3"
Add the following to the total length of the machine when these attachments are installed.		
Drawbar	276 mm	10.9 in
Ripper	1570 mm	61.8 in
Waste Striker Box	450.5 mm	17.7 in
Winch	749.7 mm	29.5 in

¹Operating weight includes LGP blade, lubricants, coolant, full fuel tank, ROPS/FOPS cab, drawbar, and 75 kg (165 lb) operator.

²Shipping weight includes blade lift cylinders, lubricants, coolant, 10% fuel, ROPS/FOPS cab, and drawbar.

³Machine height from tip of grouser to top of Product Link Antenna. For sweeps, add 60 mm (2.4 in) to overall machine height. With Extreme Service, add 11 mm (0.4 in). Forestry adds additional 120 mm (4.7 in) of height to the HVAC guard. When Cat Grade with 3D antennas are installed there is no added machine height.



Standard SU Configuration shown

Blades

Type	LGP Straight (S)		LGP Semi-Universal (SU)	
Capacity (ISO 9246)	6.11 m ³	7.99 yd ³	8.76 m ³	11.46 yd ³
7 Width across End bits	4310 mm	169.7 in	4240 mm	166.9 in
Width without End bits	4140 mm	163.0 in	4136 mm	162.8 in
8 Height	1370 mm	53.9 in	1560 mm	61.4 in
9 Dig Depth ⁴	580 mm	22.8 in	580 mm	22.8 in
10 Lift Height ⁴	1210 mm	47.6 in	1210 mm	47.6 in
11 Maximum Tilt at Blade Corner ⁴	510 mm	20.1 in	510 mm	20.1 in
Maximum Tilt Angle ⁴	6.6°		6.6°	
Pitch Adjustment	±3.0°		±3.0°	
12 Length of Machine with Blade	5.50 m	18'1"	5.79 m	19'0"
Blade Weight (blade + push arms installed) ⁵	3620 kg	7,981 lb	3780 kg	8,333 lb

⁴Blade in neutral tilt position

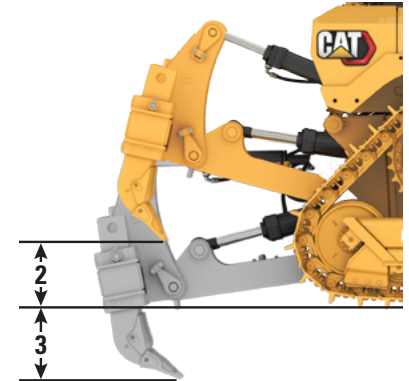
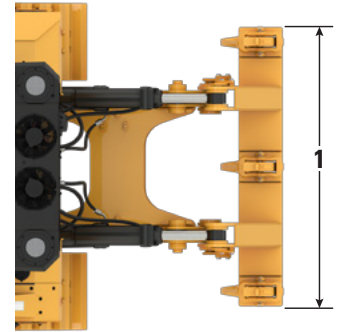
⁵Includes blade tilt cylinder

D7 Track-Type Tractor Specifications

Ripper

Type	Multi-Shank, Adjustable Parallelogram	
Number of Pockets	3	
Weight with One Shank	3307 kg	7,291 lb
Weight with Three Shanks	3611 kg	7,961 lb
Weight, Standalone Shank	152 kg	335 lb
1 Carriage Width	2211 mm	87.0 in
2 Maximum Clearance, Raised (Shank Tip)	805 mm	31.7 in
3 Maximum Penetration	644 mm	25.3 in
Maximum Penetration Force	100.0 kN	22,481 lb
Maximum Pryout Force*	187.0 kN	42,039 lb

*Measured with one shank



Winch

Model	PA110	
Weight*	2046 kg	4,511 lb
Oil Capacity	15 L	4.0 gal
Increased Tractor Length	749.7 mm	29.5 in
Winch Length	1628 mm	64.1 in
Winch Case Width	1227 mm	48.3 in
Drum Width	330 mm	13.0 in
Flange Diameter	610 mm	24.0 in
Cable Size		
Recommended	29 mm	1.125 in
Optional	32 mm	1.25 in
Drum Capacity – Cable Length		
Recommended	55 m	180'5"
Optional	78 m	255'11"

*Weight includes winch, mounting bracket and hardware, and standard wire rope.

Track Shoes

Some track shoes not available in all regions. Please consult your Cat dealer for details.

Heavy Duty Extended Life (HDXL)	Standard – 41 Section			LGP – 43 Section	
	560 mm (22 in)	610 mm (24 in)	660 mm (26 in)	760 mm (30 in)	915 mm (36 in)
Moderate Service			✓		✓
Extreme Service		✓	✓		✓
Extreme Service Trapezoidal	✓	✓		✓	✓
Self-Cleaning					✓
Rotating Bushing Track	560 mm (22 in)	610 mm (24 in)	660 mm (26 in)	760 mm (30 in)	915 mm (36 in)
Moderate Service		✓			

D7 Track-Type Tractor Specifications

Dozer Technology Features

Assist technology features to help operators of varied experience levels get the job done faster and more accurately. Grade and Command offerings help further enhance your productivity, efficiency and jobsite safety.

The cab is Third Party Grade Control Ready, equipped with Controller Area Network (CAN) interface, harness pass throughs and mounting features to make it easier to install the grade control system of your choice.

Technology features listed apply to all configurations.

Cat Assist with ARO

Attachment Ready Option (ARO)	ARO provides wiring and mounting provisions for dealer installation of Grade with 3D, AccuGrade, Universal Total Station (UTS), or other grade control systems.
Cat Grade with Slope Assist™	Slope Assist automatically maintains pre-established blade position without a Global Navigation Satellite System (GNSS)/GPS signal – no additional hardware or software needed. For machines with 3D, operators can easily switch back and forth from full 3D automatics to Slope Assist.
Steer Assist	Steer Assist automates track and blade tilt steering. Helps reduce operator fatigue by automatically maintaining straight travel with light loads or heavy loads on flat ground and cross slopes. No GNSS/GPS required.
Stable Blade	Stable Blade works seamlessly with operator inputs to help produce a smoother surface when operating manually.
Slope Indicate	Slope Indicate is included in the main machine display and shows side slope and uphill/downhill grades to help operators with slope work.
Blade Load Monitor	Blade Load Monitor gives you real-time feedback on current load versus the optimal blade load based on your ground conditions. Actively monitors machine load and track slip to help you reach optimal pushing capacity. ¹
Traction Control	Traction Control automatically reduces track slip to save you time, fuel and track wear. ¹
AutoCarry™	AutoCarry automates blade lift to help you maintain consistent blade load and help reduce track slip. ¹
AutoRip	AutoRip automates ripper raise/lower and shank in/out to maximize ripping productivity and reduce operator fatigue. ¹

Cat Grade 3D Ready (hardware only)

Includes all features from Cat Assist with ARO listed above, plus:

Cat Grade with 3D (hardware only)	Factory integrated Cat Grade with 3D uses GNSS/GPS to control the blade so you can get to design plan faster. Low profile antennas are integrated into the cab roof and GNSS/GPS receivers are mounted inside the cab for better protection. ²
Dedicated Touchscreen Grade Display	Full-color Grade operator interface is intuitive and easier to use. The 254 mm (10 in) touchscreen uses an Android OS platform and operates like a smart phone.

NOTE: Grade 3D Ready option requires additional license purchase and installation to upgrade to a fully functional Grade 3D system. Consult your Cat dealer for more information.

Cat Grade 3D with Assist

Includes all features from Cat Grade 3D Ready (Hardware Only) listed above, plus:

Steer Assist 3D	Automatically follow guidance lines from site design plans (or Infield designs) under light load or heavy load. ²
-----------------	--

NOTE: Includes required licenses and software.

Cat Command/Remote Control

Remote Control Ready Cab (Standard)	Cab is Remote Control Ready from the factory with external connector for dealer installation of the Cat Command remote control system.
Command for Dozing ² (Optional)	Cat Command remote control technology provides full dozer maneuverability from a safe distance.

¹Feature not operational indoors or in areas where a GNSS/GPS signal is not available.

²Requires Software Enabled Attachment (SEA) installation when not configured from the factory.

Note: Grade and Assist technologies, except Slope Indicate, Blade Load Monitor and Traction Control, are not compatible with Angle blades or specialty blades. Please consult your Cat dealer for details.

Standard and Optional Equipment

Standard and optional equipment may vary. Consult your Cat dealer for details.

	Standard	Optional		Standard	Optional
POWER TRAIN			CAT TECHNOLOGY		
Cat C9.3B diesel engine	✓		Cat Slope Indicate	✓	
Fully-automatic 4-speed transmission with Lock-Up Clutch (LUC) torque divider	✓		Cat Assist with ARO Package*	✓	
Air-to-air aftercooler (ATAAC)	✓		Cat Grade 3D Ready (hardware only)*		✓
Coolant, extended life	✓		Cat Grade 3D with Assist*		✓
Diesel Exhaust Fluid (DEF) system – electronic fill indicator, heated lines/tank	✓		Third Party Grade Control Ready Cab	✓	
Differential steering	✓		Product Link, Cellular	✓	
Engine air filter with electronic service indicator	✓		Compatibility with radios and base stations from Trimble, Topcon, and Leica	✓	
Engine air pre-cleaner with dust ejection	✓		Capability to install 3D grade systems from Trimble, Topcon, and Leica	✓	
Engine air pre-cleaner with screen and dust ejection		✓	Product Link – Dual Cellular/Satellite		✓
Engine with thermal shield		✓	Remote Flash/Troubleshoot	✓	
Engine idle shutdown	✓		Grade Connectivity		✓
Final Drives, double reduction – Standard or Low Ground Pressure (LGP)	✓		Operator ID	✓	
Final Drives, double reduction – Arctic, Waste		✓	Machine Security – Passcode	✓	
Fuel water separator	✓		Machine Security – Bluetooth		✓
Fuel priming pump, electric	✓		Remote Control Ready	✓	
Fan, hydraulic demand	✓		Cat Command for Dozing		✓
Fan, auto reversing		✓			
Radiator, aluminum bar plate with debris resistant cores	✓				
Sound suppression		✓			
Starting Aid, automatic ether	✓				
Starting Aid, jacket water heater (110V or 220V)		✓			

*Refer to page 8 for technology package details.

(continued on next page)

D7 Standard and Optional Equipment

Standard and Optional Equipment *(continued)*

Standard and optional equipment may vary. Consult your Cat dealer for details.

	Standard	Optional		Standard	Optional
OPERATOR ENVIRONMENT			UNDERCARRIAGE		
Fully redesigned cab with Integrated ROPS and FOPS, single pane door glass, sliding windows, with Cat Advanced Cabin Filtration	✓		Standard or Low Ground Pressure (LGP) undercarriage	✓	
High debris cab, fully redesigned with Integrated ROPS and FOPS, impact resistant polycarbonate doors, solid side windows for improved sealing, powered pre-cleaner with Cat Advanced Cabin Filtration for improved performance and filter life		✓	Heavy Duty (HDXL with DuraLink™)	✓	
Full-color 254 mm (10 inch) liquid crystal touchscreen display	✓		Rotating bushing track		✓
High Definition rear view camera with backup lines	✓		Waste undercarriage		✓
In-display key machine features	✓		Carrier rollers	✓	
Operator ID/Operator ID with Security	✓		Hydraulic track adjusters	✓	
Cloth seat with mechanical adjustable lumbar support	✓		Lifetime lubricated track and roller	✓	
Deluxe leather heated/ventilated seat with electronic adjustable lumbar support		✓	Moderate service track shoes (see chart on page 7)	✓	
Armrests adjustable fore-aft and vertically	✓		Extreme service track shoes (see chart on page 7)		✓
Electrohydraulic implement and steering controls	✓		Track roller frame guiding guards: center, partial or full NOTE: Center guiding guards standard on LGP machine.		✓
Joystick control – ARO		✓	BLADES		
Decelerator pedal	✓		Semi-Universal (SU)		✓
Fresh air filter	✓		Straight (S)		✓
Powered fresh air filter precleaner		✓	Angle (A)		✓
Cab mounted modular HVAC system with automatic reversing fans. Automatic temperature and blower control with distributed ducting.	✓		Universal (U) [for Standard configuration only]		✓
Communication radio ready	✓		Waste/Landfill		✓
Rearview mirror	✓		Forestry/Land Clearing		✓
Retractable 76 mm (3 in) seat belt	✓		Cat FirstCut cutting edges (SU Blades)		✓
Cup holders	✓				
Dash foot pads	✓				
Floor plate and pedals for shorter operators		✓			
Entertainment radio with Bluetooth® and microphone	✓				
Lunchbox storage	✓				
Wipers	✓				
USB and Auxiliary Ports	✓				
Operator presence switch	✓				
Emergency Hammer		✓			
Window shades		✓			

(continued on next page)

Standard and Optional Equipment (continued)

Standard and optional equipment may vary. Consult your Cat dealer for details.

	Standard	Optional		Standard	Optional
HYDRAULICS			GUARDING AND SCREENS		
Load-sensing hydraulics	✓		Bottom guards – standard	✓	
Independent steering and implement pumps	✓		Bottom guards – heavy duty and sealed		✓
Guarded blade hydraulic hoses	✓		Fuel tank guards		✓
Rear hydraulics ripper ready	✓		Grab handles	✓	
ELECTRICAL			Guards for premium lights, front and side		✓
Standard Lights – 4 LED light package	✓		Sweeps package		✓
Upgraded Lights – 6 LED light package		✓	Rear fixed screen		✓
Premium Lights – 12 LED light package		✓	Hinged rear screen		✓
Backup alarm	✓		Hinged side screen		✓
Converter, 15 Amp, 12 V outlets	✓		ATTACHMENTS		
Horn, forward warning	✓		Multi-shank ripper with CapSure™ ripper tips and shank protector		✓
Beacon warning light		✓	PA110 Hydraulic Winch		✓
SERVICE AND MAINTENANCE			Drawbar		✓
30-minute cab removal	✓		Rear striker box with striker bar		✓
Centralized, remote mounted pressure taps	✓				
Ecology drains	✓				
Extended service intervals (500 hours engine, 1,000-hour power train)	✓				
Ground level service center (remote electrical disconnect, secondary shutdown switch, hour meter)	✓				
Fast fuel fill		✓			
High-speed oil change		✓			
Heavy duty perforated radiator doors, louvered and hinged	✓				
Quick access cab floor		✓			
Under hood work light	✓				
Removable engine enclosures, perforated and hinged	✓				
Scheduled Oil Sampling (S·O·S SM) ports	✓				
Shovel holder	✓				
BATTERIES, STARTERS, ALTERNATORS AND COOLANT					
Batteries – Heavy Duty	✓				
Batteries – Arctic		✓			
Starter – 24V	✓				
Alternators – 150 Amp	✓				
Alternators – 150 Amp, ducted		✓			
Engine coolant, standard –37° C (–35° F)	✓				
Engine coolant, arctic –51° C (–60° F)		✓			

D7 Environmental Declaration

The following information applies to the machine at the time of final manufacture as configured for sale in the regions covered in this document. The content of this declaration is valid as of the date issued; however, content related to machine features and specifications are subject to change without notice. For additional information, please see the machine's Operation and Maintenance Manual.

For more information on sustainability in action and our progress, please visit <https://www.caterpillar.com/en/company/sustainability>.

Engine

- The Cat® C9.3B engine meets U.S. EPA Tier 4 Final, EU Stage V, Japan 2014, Korea Tier 5, and China Nonroad Stage IV emissions standards.
- Cat diesel engines are required to use ULSD (ultra-low sulfur diesel fuel with 15 ppm of sulfur or less) or ULSD blended with the following lower-carbon intensity fuels up to:
 - ✓ 20% biodiesel FAME (fatty acid methyl ester)*
 - ✓ 100% renewable diesel, HVO (hydrotreated vegetable oil) and GTL (gas-to-liquid) fuels

Refer to guidelines for successful application. Please consult your Cat dealer or "Caterpillar Machine Fluids Recommendations" (SEBU6250) for details.

*Engines with no aftertreatment devices can use higher blends, up to 100% biodiesel.

Air Conditioning System

- The air conditioning system on this machine contains the fluorinated greenhouse gas refrigerant R134a (Global Warming Potential = 1430). The system contains 1.36 kg (2.99 lb) of refrigerant which has a CO₂ equivalent of 1.946 metric tonnes (2.145 tons).

Paint

- Based on best available knowledge, the maximum allowable concentration, measured in parts per million (PPM), of the following heavy metals in paint are:
 - Barium < 0.01%
 - Cadmium < 0.01%
 - Chromium < 0.01%
 - Lead < 0.01%

Sound Performance

Operator Sound Pressure Level (ISO 6396:2008) – 77 dB(A)

Exterior Sound Power Level (ISO 6395:2008) – 112 dB(A)

Operator Sound Pressure Level (ISO 6396:2008) – 77 dB(A)*

Exterior Sound Power Level (ISO 6395:2008) – 112 dB(A)*

- *For machines required to meet applicable regional regulations of Ukraine and Countries that adopt the "EU Directives"; and machines equipped with the sound-suppression package.
- Measurements conducted at 70% of the maximum engine cooling fan speed, with cab doors and windows closed, and the cab properly maintained.
- Sound levels listed above include both measurement and production variation uncertainties.
- Hearing protection may be needed when operating with an open operator station and cab (when not properly maintained or doors/windows open) for extended periods or in a noisy environment.

Oils and Fluids

- Caterpillar factory fills with ethylene glycol coolants. Cat Diesel Engine Antifreeze/Coolant (DEAC) and Cat Extended Life Coolant (ELC) can be recycled. Consult your Cat dealer for more information.
- Cat Bio HYDO Advanced is an EU Ecolabel approved biodegradable hydraulic oil.
- Additional fluids are likely to be present, please consult the Operations and Maintenance Manual or the Application and Installation guide for complete fluid recommendations and maintenance intervals.

Features and Technology

- The following features and technology may contribute to fuel savings and/or carbon reduction. Features may vary. Consult your Cat dealer for details.
 - Move up to 8% more material with increased blade capacity.¹
 - Fully automatic 4-speed powershift transmission continuously adjusts for maximum efficiency.
 - Assist technology features reduce operator inputs up to 45%.²
 - Remote Flash and Remote Troubleshoot

¹Comparison for blade capacity is between the Semi-Universal (SU) blade for the D7E: 6.86 m³/8.98 yd³ and the D7 (17B): 7.42 m³/9.70 yd³.

²Input reduction based on product testing of a D5 (17B) Next Generation Dozer with and without the use of Assist technology features, in a truck dump spreading in sand application. Inputs measured as number of times operator adjusts controls, collected and verified by electronic control module (ECM). Test conducted by Caterpillar at Peoria Proving Ground, Washington, IL in July 2022.

Recycling

- The materials included in machines are categorized as below with approximate weight percentage. Because of variations of product configurations, the following values in the table may vary.

Material Type	Weight Percentage
Steel	81.94%
Iron	7.19%
Nonferrous Metal	1.79%
Mixed Metal	0.18%
Mixed-Metal and Nonmetal	1.94%
Plastic	0.37%
Rubber	0.37%
Mixed Nonmetallic	0.04%
Fluid	0.59%
Other	0.29%
Uncategorized	5.30%
Total	100%

- A machine with higher recyclability rate will ensure more efficient usage of valuable natural resources and enhance End-of-Life value of the product. According to ISO 16714:2008 (Earthmoving machinery – Recyclability and recoverability – Terminology and calculation method), recyclability rate is defined as percentage by mass (mass fraction in percent) of the new machine potentially able to be recycled, reused, or both.

All parts in the bill of material are first evaluated by component type based on a list of components defined by the ISO 16714:2008 and Japan Construction Equipment Manufacturers Association (CEMA) standards. Remaining parts are further evaluated for recyclability based on material type.

Because of variations of product configurations, the following value in the table may vary.

Recyclability – 98%



D7

Waste Handler

From pushing trash to spreading cover, and cell construction to closing, the Waste Handling package is designed and manufactured from the frame up to take on the demands of landfill work. Specialized guarding throughout the machine helps protect major components in harsh waste applications from impact, wrapping, and airborne debris.

Fully Automatic, Next Generation Performance

- Harness more weight and horsepower than D7E.
- Fully automatic 4-speed powershift transmission continuously adjusts for maximum efficiency and power to the ground without added operator input.
- Elevated sprocket gives you better ride and balance, plus more penetration force.

Added Machine Protection

- High-debris cab has impact-resistant polycarbonate doors and dual pane windows – eliminates the need for door screens.
- Powered air pre-cleaner helps keep cab air cleaner and pressurized for greater operator comfort.
- Fuel tank guard and heavy duty bottom guards shield major machine components.
- Internal sealing keeps the trash away from the inner compartments.
- Rear striker bar helps protect against trash climbing up the tracks.
- Guarded final drives give added protection against wrapping and impact.
- 12 premium LED lights illuminate the work area.

Ease of Maintenance

- High-debris cooling system with automatic reversing fan and slots for easy cleanout access.
- Trash resistant radiator, with 6 fins per inch, helps reduce plugging.
- Quick access cab floor option offers tool-less access to the floor plate opening.
- Laminated thermal shields on engine and aftertreatment (when equipped) provide added thermal protection in high debris applications.
- Ducted and sealed alternator for longer life.
- Engine pre-cleaner with screen delivers cleaner air to the power train.

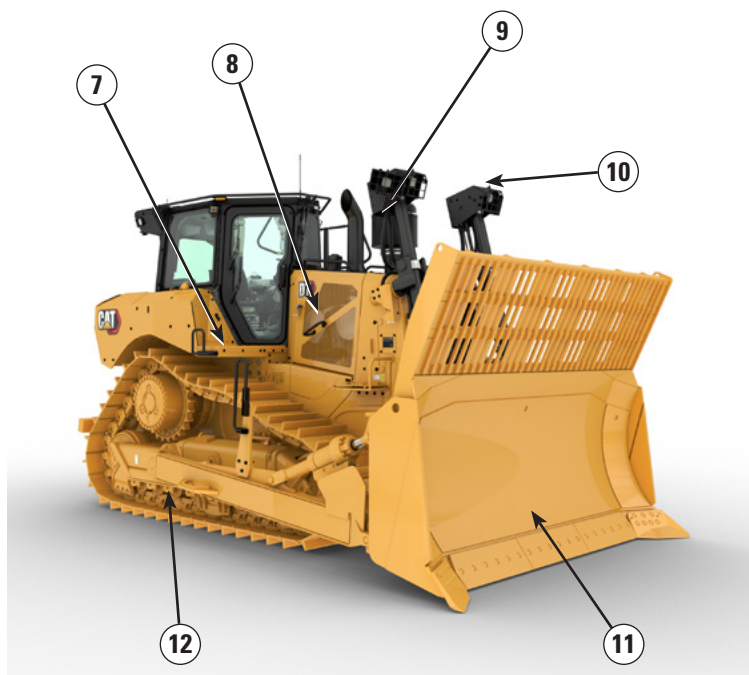
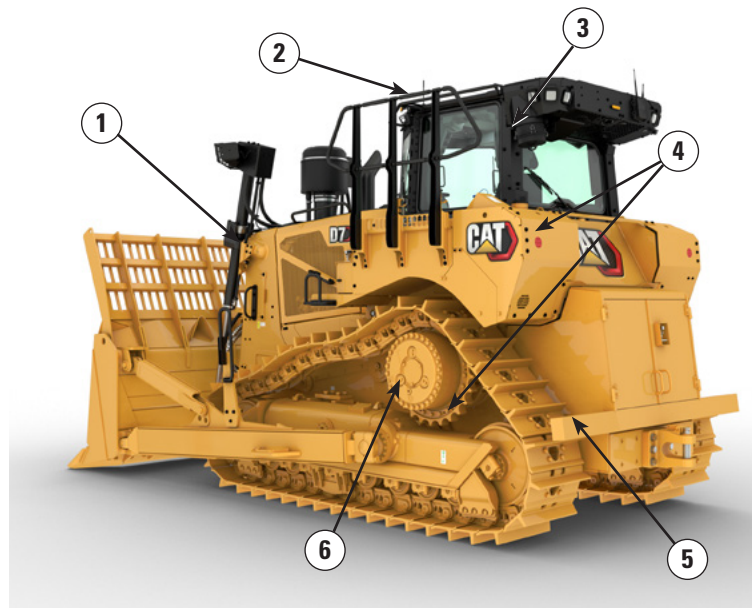
Equipped for the Job

- Landfill blades are equipped with a trash rack to increase productive capacity when machine works in lighter material like waste.
- Wear plate helps extend blade life.
- Heavy Duty Extended Life (HDXL) undercarriage includes Kevlar® guarded, sealed idlers to help prevent debris such as wire, string or plastic bags from wrapping into seals.
- Press-fit bushings and Positive Pin Retention (PPR2) are particularly well suited for impact applications such as forestry, waste, rock, or V-ditching.
- Center-hole track helps eject debris.

D7 Waste Handler Specifications

D7 Waste Handler Features

- 1) High-debris cooling system with automatic reversing fan and slots for easy cleanout access. Trash resistant radiator, with 6 fins per inch, helps reduce plugging.
- 2) High debris cab has impact-resistant polycarbonate doors and dual pane windows, eliminate the need for door screens.
- 3) Powered air pre-cleaner helps keep cab air cleaner and pressurized for greater operator comfort.
- 4) Fuel tank guard and heavy duty bottom guards shield major machine components. Internal sealing keeps the trash away from the inner compartments.
- 5) Rear striker bar helps protect against trash climbing up the tracks.
- 6) Guarded final drives give added protection against wrapping and impact.



- 7) Quick access cab floor option offers tool-less access to the floor plate opening.
- 8) Laminated thermal shields on engine and aftertreatment (when equipped) provide added thermal protection in high debris applications. Ducted and sealed alternator for longer life.
- 9) Engine pre-cleaner with screen delivers cleaner air to the power train.
- 10) 12 premium LED lights illuminate the work area.
- 11) Landfill Blades are equipped with a trash rack to increase productive capacity when machine works in lighter material like waste. Wear plate helps extend blade life.

12) Waste Undercarriage

- Heavy Duty Extended Life (HDXL) undercarriage includes Kevlar® guarded, sealed idlers to help prevent debris such as wire, string or plastic bags from wrapping into seals.
- Press-fit bushings and Positive Pin Retention (PPR2) are particularly well suited for impact applications such as forestry, waste, rock, or V-ditching.
- Center-hole track helps eject debris.

D7 Waste Handler Specifications

Engine

Engine Model	Cat® C9.3B	
Emissions	U.S. EPA Tier 4 Final/ EU Stage V/Japan 2014/ Korea Tier 5/China Nonroad Stage IV	
Power Train	Fully Automatic 4-Speed	
Net Power (2,200 rpm)		
ISO 9249/SAE J1349	197 kW	265 hp
ISO 9249 (DIN)	268 mhp	
Engine Power (1,400 rpm)		
ISO 14396	230 kW	309 hp
ISO 14396 (DIN)	313 mhp	
Gross Power: SAE J1995:2014	294 kW	394 hp
Bore	115 mm	4.5 in
Stroke	149 mm	5.9 in
Displacement	9.3 L	567.52 in ³

- Net power advertised is the power available at the flywheel when the engine is equipped with fan, air cleaner, muffler, and alternator.
 - Advertised power is tested per the specified standard in effect at the time of manufacture.
 - No derating required up to 3261 m (10,700 ft) altitude, beyond 3261 m (10,700 ft) automatic derating occurs.
 - Cat diesel engines are required to use ULSD (ultra-low sulfur diesel fuel with 15 ppm of sulfur or less) or ULSD blended with the following lower-carbon intensity fuels up to:
 - ✓ 20% biodiesel FAME (fatty acid methyl ester)*
 - ✓ 100% renewable diesel, HVO (hydrotreated vegetable oil) and GTL (gas-to-liquid) fuels
- Refer to guidelines for successful application. Please consult your Cat dealer or “Caterpillar Machine Fluids Recommendations” (SEBU6250) for details.

*Engines with no aftertreatment devices can use higher blends, up to 100% biodiesel.

Fluid/Refill Capacities

Fuel Tank	465 L	122.8 gal
Diesel Exhaust Fluid (DEF) Tank	44 L	11.6 gal
Cooling System	62 L	16.4 gal
Engine Crankcase	28 L	7.4 gal
Power Train	187 L	49.4 gal
Final Drives (each)	13 L	3.4 gal
Roller Frames Standard/LGP (each)		
Minimum	85 L	22.5 gal
Maximum	96 L	25.4 gal
Hydraulic System	144 L	38 gal

Air Conditioning System

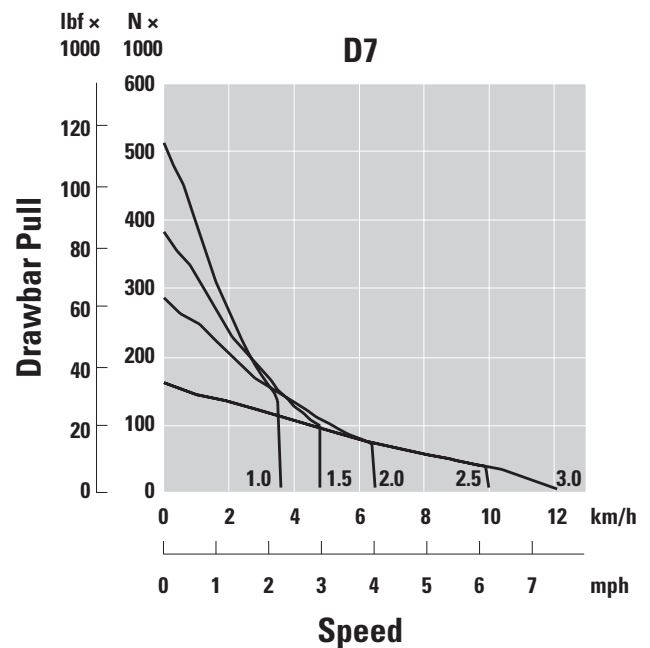
The air conditioning system on this machine contains the fluorinated greenhouse gas refrigerant R134a (Global Warming Potential = 1430). The system contains 1.36 kg of refrigerant which has a CO₂ equivalent of 1.946 metric tonnes.

Transmission

1.0 Forward	3.5 km/h	2.17 mph
1.5 Forward	4.8 km/h	2.98 mph
2.0 Forward	6.4 km/h	3.97 mph
2.5 Forward	9.0 km/h	5.59 mph
3.0 Forward	11.4 km/h	7.08 mph
1.0 Reverse	3.5 km/h	2.17 mph
1.5 Reverse	4.8 km/h	2.98 mph
2.0 Reverse	6.3 km/h	3.91 mph
2.5 Reverse	8.5 km/h	5.28 mph
3.0 Reverse	11.4 km/h	7.08 mph

Drawbar Pull

1.0 Forward	659.2 kN	148,194 lbf
1.5 Forward	490.8 kN	110,336 lbf
2.0 Forward	366.1 kN	82,303 lbf
2.5 Forward	X kN	X lbf
3.0 Forward	205.8 kN	46,266 lbf



D7 Waste Handler Specifications

Hydraulic Controls

Pressures

Maximum Implement Operating Pressure	31 000 kPa	4,496 psi
Maximum Steering Operating Pressure	38 000 kPa	5,511 psi
Bulldozer Relief Valve Setting	24 000 kPa	3,481 psi
Tilt Cylinder Relief Valve Setting	24 000 kPa	3,481 psi
Ripper (Lift) Relief Valve Setting	24 000 kPa	3,481 psi
Ripper (Pitch) Relief Valve Setting	24 000 kPa	3,481 psi

Pump

Pump Type	Piston-type, Variable Displacement	
Pump Output (Steering)	267 L/min	70.5 gal/min
Pump Output (Implement)	220 L/min	58.1 gal/min
Pump Output (Fan)	56 L/min	14.8 gal/min
Lift Cylinder Flow	220 L/min	58.1 gal/min
Tilt Cylinder Flow	170 L/min	44.9 gal/min
Ripper Cylinder Flow	220 L/min	58.1 gal/min

*Engine speed varies with load and travel speed. A high idle/low working load speed shown.

Advanced Cabin Filtration

Operator Cabin

- Distributed HVAC ducting with automatic temperature control and blower speed provides ultimate operator comfort with less user input.
- Reduced maintenance of the condenser core with automatic reversing fans.
- Cat Advanced Cabin Filtration is standard.

Cat Advanced Cabin Filtration

- Operator protection from respirable particulate (0.3-10-micron size).
- Sustainably pressurized cab (U.S. Silica compliant).
- Reduced maintenance with longer life, high efficiency filters.
- Protection for all cabin components: electronics, etc.
- Helps meet U.S. Occupational Safety and Health Administration Silica Rule Table 1 requirements for operator cabs.
- Multi-tiered filter offerings for optional efficiency upgrades. Contact Cat dealer for availability.
 - MERV 16 – Standard Equipment
 - HEPA
 - Activated Carbon + HEPA
 - ABEK1 + HEPA

Standards

Sound Level Information

- Hearing protection may be needed when the machine is operated with an open operator station, in a noisy environment, with a cab that is not properly maintained, or when the doors and windows are open for extended periods of time.

Sound Level	Test Method	
Operator Sound Pressure Level	77 dB(A)	"ISO 6396:2008" ⁽¹⁾
	77 dB(A) *	
Exterior Sound Pressure Level	112 dB(A)	"ISO 6395:2008" ⁽²⁾
	112 dB(A) *	"ISO 6395:1988" ⁽²⁾

*For machines required to meet applicable regional regulations of Ukraine, United Kingdom, and Countries that Adopt the "EU Directive"; or machines equipped with the sound-suppression package.

⁽¹⁾The measurement was conducted at 70% of the maximum engine cooling fan speed. The sound level may vary at different engine cooling fan speeds. The measurement was conducted with the cab doors and the cab windows closed. The cab was properly installed and maintained.

⁽²⁾The measurement was conducted at 70% of the maximum engine cooling fan speed. The sound level may vary at different engine cooling fan speeds.

- The sound levels listed above include both measurement uncertainty and uncertainty due to production variation.

Rollover Protective Structure (ROPS)/Falling Object Protective Structure (FOPS)

- ROPS meets the following criteria: ISO 3471:2008.
- FOPS meets the following criteria: ISO 3449:2005 Level II.

Brakes

- Brakes meet the standard ISO 10265:2008.

D7 Waste Handler Specifications

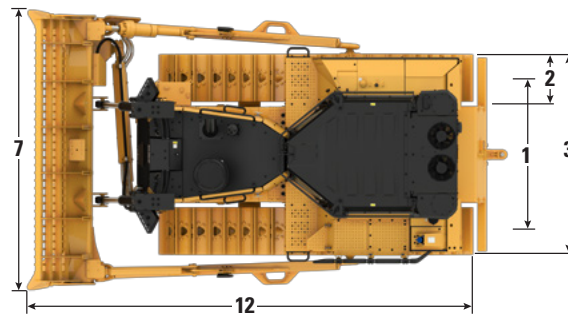
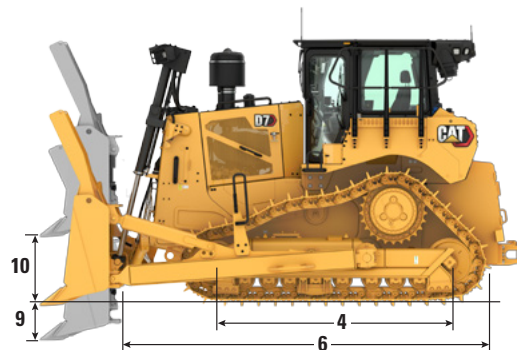
D7 Waste Handler

Operating Weight ¹	30 528 kg	67,303 lb
Shipping Weight ²	26 036 kg	57,400 lb
Ground Pressure (ISO 16754)	73.7 kPa	10.69 psi
Undercarriage	41 Sections with 8 Bottom Rollers Guarded	
1 Track Gauge	1.98 m	6'6"
2 Width of Track Shoe (Standard)	610 mm	24.0 in
3 Width of Tractor (without trunnions)	2.79 m	9'2"
4 Length of Track on Ground	3.02 m	9'11"
Ground Contact Area (ISO 16754)	4.06 m ²	43.7 ft ²
Grouser Height (Extreme Service)	82 mm	3.2 in
Ground Clearance	442 mm	17.4 in
5 Machine Height ³ (Tip of Grouser to HVAC Guard)	3.56 m	11'8"
Top of Cab ¹	3.44 m	11'3"
Top of Guardrail	3.31 m	10'10"
6 Length of Basic Tractor	4.66 m	15'3"
Add the following to the total length of the machine when these attachments are installed.		
Drawbar	276 mm	10.9 in
Ripper	1570 mm	61.8 in
Waste Striker Box	450.5 mm	17.7 in
Winch	749.7 mm	29.5 in

¹Operating weight includes SU Landfill blade, lubricants, coolant, full fuel tank, ROPS/FOPS cab, rear striker box and one counterweight, and 75 kg (165 lb) operator.

²Shipping weight includes blade lift cylinders, lubricants, coolant, 10% fuel, ROPS/FOPS cab, and rear striker box and one counterweight.

³Machine height from tip of grouser to top of Product Link Antenna. For sweeps, add 60 mm (2.4 in) to overall machine height. With Moderate Service, subtract 11 mm (0.4 in). When Cat Grade with 3D antennas are installed there is no added machine height.



Standard Waste Handler shown

Blades

Type	Semi-Universal (SU) Landfill		Universal (U) Landfill	
Capacity (ISO 9246)	17.7 m ³	23.15 yd ³	19.4 m ³	25.37 yd ³
7 Width across End bits	3640 mm	143.3 in	3926 mm	154.6 in
Width without End bits	3536 mm	139.2 in	3822 mm	150.5 in
8 Height	2500 mm	98.4 in	2500 mm	98.4 in
9 Dig Depth ⁴	580 mm	22.8 in	580 mm	22.8 in
10 Lift Height ⁴	1210 mm	47.6 in	1210 mm	47.6 in
11 Maximum Tilt at Blade Corner ⁴	500 mm	19.7 in	565 mm	22.2 in
Maximum Tilt Angle ⁴	8.5°		8.5°	
Pitch Adjustment	±3.0°		±3.0°	
12 Length of Machine with Blade	5.79 m	19'0"	6.03 m	19'9"
Blade Weight (blade + push arms installed)	4170 kg	9,193 lb	4455 kg	9,822 lb

⁴Blade in neutral tilt position

Cat FirstCut cutting edges are available for Semi-Universal (SU) blades. FirstCut edges provide superior penetration in tough compacted, rocky or frozen soils resulting in increased payload and productivity. Consult with your Cat dealer for more benefits and details.

D7 Waste Handler Specifications

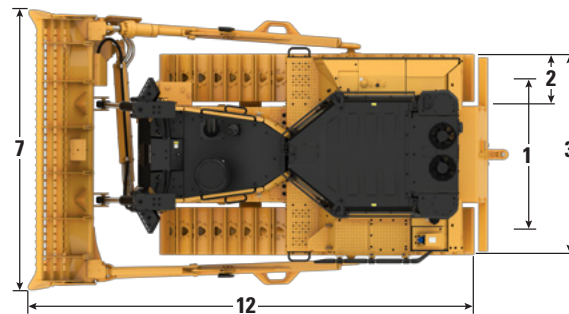
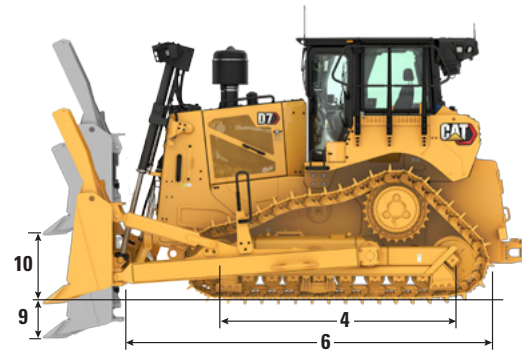
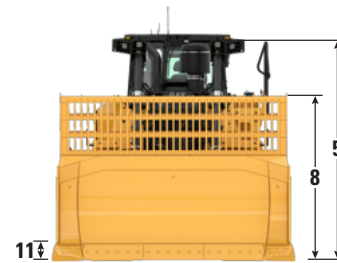
D7 LGP Waste Handler

Operating Weight ¹	32 676 kg	72,038 lb
Shipping Weight ²	28 184 kg	62,135 lb
Ground Pressure (ISO 16754)	49.2 kPa	7.14 psi
Undercarriage	43 Sections with 9 Bottom Rollers	
1 Track Gauge	2.24 m	7' 4"
2 Width of Track Shoe (Standard)	915 mm	36.0 in
3 Width of Tractor (without trunnions)	3.15 m	10'4"
4 Length of Track on Ground	3.24 m	10'8"
Ground Contact Area (ISO 16754)	6.51 m ²	70.1 ft ²
Grouser Height (Extreme Service)	82 mm	3.2 in
Ground Clearance	42 mm	1.7 in
5 Machine Height ³ (Tip of Grouser to HVAC Guard)	3.56 m	11'8"
Top of Cab*	3.44 m	11'3"
Top of Guardrail	3.31 m	10'10"
6 Length of Basic Tractor	4.66 m	15'3"
Add the following to the total length of the machine when these attachments are installed.		
Drawbar	276 mm	10.9 in
Ripper	1570 mm	61.8 in
Waste Striker Box	450.5 mm	17.7 in
Winch	749.7 mm	29.5 in

¹Operating weight includes LGP SU Landfill blade, lubricants, coolant, full fuel tank, ROPS/FOPS cab, rear striker box and one counterweight, and 75 kg (165 lb) operator.

²Shipping weight includes blade lift cylinders, lubricants, coolant, 10% fuel, ROPS/FOPS cab, and rear striker box and one counterweight.

³Machine height from tip of grouser to top of Product Link™ Antenna. For sweeps, add 60 mm (2.4 in) to overall machine height. With Moderate Service, subtract 11 mm (0.4 in). When Cat Grade with 3D antennas are installed there is no added machine height.



Standard Waste Handler shown

Blades

Type	LGP Semi-Universal (SU) Landfill		LGP Straight (S) Landfill	
Capacity (ISO 9246)	20.9 m ³	27.34 yd ³	16.7 m ³	21.84 yd ³
7 Width across End bits	4240 mm	166.9 in	4310 mm	169.7 in
Width without End bits	4136 mm	162.8 in	4140 mm	163.0 in
8 Height	2500 mm	98.4 in	2350 mm	92.5 in
9 Dig Depth ⁴	580 mm	22.8 in	580 mm	22.8 in
10 Lift Height ⁴	1210 mm	47.6 in	1210 mm	47.6 in
11 Maximum Tilt at Blade Corner ⁴	510 mm	20.1 in	510 mm	20.1 in
Maximum Tilt Angle ⁴	6.6°		6.6°	
Pitch Adjustment	±3.0°		±3.0°	
12 Length of Machine with Blade	5.79 m	19'0"	5.50 m	18'1"
Blade Weight (blade + push arms installed)	4700 kg	10,362 lb	4480 kg	9,877 lb

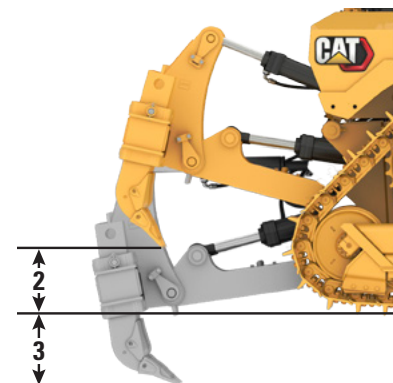
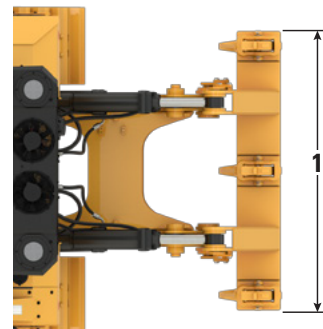
⁴Blade in neutral tilt position

D7 Waste Handler Specifications

Ripper

Type	Multi-Shank, Adjustable Parallelogram	
Number of Pockets	3	
Weight with One Shank	3307 kg	7,291 lb
Weight with Three Shanks	3611 kg	7,961 lb
Weight, Standalone Shank	152 kg	335 lb
1 Carriage Width	2211 mm	87.0 in
2 Maximum Clearance, Raised (Shank Tip)	805 mm	31.7 in
3 Maximum Penetration	644 mm	25.3 in
Maximum Penetration Force	100.0 kN	22,481 lb
Maximum Pryout Force*	187.0 kN	42,039 lb

*Measured with one shank



Winch

Model	PA110	
Weight*	2046 kg	4,511 lb
Oil Capacity	15 L	4.0 gal
Increased Tractor Length	749.7 mm	29.5 in
Winch Length	1628 mm	64.1 in
Winch Case Width	1227 mm	48.3 in
Drum Width	330 mm	13.0 in
Flange Diameter	610 mm	24.0 in
Cable Size		
Recommended	29 mm	1.125 in
Optional	32 mm	1.25 in
Drum Capacity – Cable Length		
Recommended	55 m	180'5"
Optional	78 m	255'11"

*Weight includes winch, mounting bracket and hardware, and standard wire rope.

Track Shoes – Heavy Duty Extended Life (HDXL)

Some track shoes not available in all regions. Please consult your Cat dealer for details.

Heavy Duty Extended Life (HDXL)	Standard – 41 Section			LGP – 43 Section	
	560 mm (22 in)	610 mm (24 in)	660 mm (26 in)	760 mm (30 in)	915 mm (36 in)
Moderate Service			✓		✓
Extreme Service		✓	✓		✓
Extreme Service Trapezoidal	✓	✓		✓	✓

D7 Waste Handler Standard and Optional Equipment

Standard and Optional Equipment

Standard and optional equipment may vary. Consult your Cat dealer for details.

	Standard	Optional		Standard	Optional
POWER TRAIN			CAT TECHNOLOGY		
Cat C9.3B diesel engine	✓		Slope Indicate	✓	
Fully-automatic 4-speed transmission with Lock-Up Clutch (LUC) torque divider	✓		Cat Assist with ARO Package*	✓	
Air-to-air aftercooler (ATAAC)	✓		Cat Grade 3D Ready with Assist Package*		✓
Coolant, extended life	✓		Cat Grade 3D with Assist Package*		✓
Diesel Exhaust Fluid (DEF) system – electronic fill indicator, heated lines/tank	✓		Third Party Grade Control Ready Cab	✓	
Differential steering	✓		Compatibility with radios and base stations from Trimble, Topcon, and Leica	✓	
Engine air filter with electronic service indicator	✓		Capability to install 3D grade systems from Trimble, Topcon, and Leica	✓	
Engine air pre-cleaner with screen and dust ejection	+		Product Link, Cellular	✓	
Engine with thermal shield	+		Product Link – Dual Cellular/Satellite		✓
Engine idle shutdown	✓		Remote Flash/Troubleshoot	✓	
Extended life coolant	✓		Grade Connectivity		✓
Double Reduction Final Drives – Arctic, Waste	+		Operator ID	✓	
Fuel water separator	✓		Machine Security – Passcode	✓	
Electric fuel priming pump	✓		Machine Security – Bluetooth		✓
Fan, hydraulic demand	✓		Remote Control Ready	✓	
Fan, auto reversing	+		Cat Command for Dozing		✓
Radiator, aluminum bar plate with debris resistant cores	✓				
Sound suppression		✓			
Starting Aid, automatic ether	✓				
Starting Aid, jacket water heater (110V or 220V)		✓			

(continued on next page)

+Included in Waste Handler Package

*Refer to page 8 for technology package details.

D7 Waste Handler Standard and Optional Equipment

Standard and Optional Equipment *(continued)*

Standard and optional equipment may vary. Consult your Cat dealer for details.

	Standard	Optional		Standard	Optional
OPERATOR ENVIRONMENT			UNDERCARRIAGE		
High debris cab, fully redesigned with Integrated ROPS and FOPS, impact resistant polycarbonate doors, solid side windows for improved sealing, powered precleaner with Cat Advanced Cabin Filtration for improved performance and filter life	+		Standard or Low Ground Pressure (LGP) undercarriage	✓	
Full-color 254 mm (10 inch) liquid crystal touchscreen display	✓		Heavy Duty (HDXL with DuraLink™)	✓	
High Definition rear view camera with backup lines	✓		Waste undercarriage: Positive Pin Retention, Extreme Service trapezoidal track	+	
In-display key machine features	✓		Carrier rollers		✓
Operator ID/Operator ID with Security	✓		Hydraulic track adjusters	✓	
Cloth seat with mechanical adjustable lumbar support	✓		Lifetime lubricated track and roller	✓	
Deluxe leather heated/ventilated seat with electronic adjustable lumbar support		✓	Extreme service trapezoidal track shoes (see chart on page 19)	+	
Armrests adjustable fore-aft and vertically	✓		Track roller frame – 7 bottom rollers	✓	
Electrohydraulic implement and steering controls	✓		Track roller frame – 8 bottom rollers		✓
Joystick control – ARO		✓	Track roller frame with center guiding guards	+	
Powered fresh air filter pre-cleaner	+		BLADES		
Cab mounted modular HVAC system with automatic reversing fans. Automatic temperature and blower control with distributed ducting.	✓		Semi-Universal Landfill		*
Communication radio ready	✓		Universal Landfill		*
Rearview mirror	✓		Straight Landfill – LGP		*
Retractable 76 mm (3 in) seat belt	✓		Semi-Universal Landfill – LGP		*
Cup holders	✓		Semi-Universal	✓	
Dash foot pads	✓		Straight	✓	
Floor plate and pedals for shorter operators		✓	Angle	✓	
Entertainment radio with Bluetooth® and microphone	✓		Universal Blade – Standard configuration only	✓	
Lunchbox storage	✓		Cat FirstCut cutting edges (SU blades)		✓
Wipers	✓				
USB and Auxiliary Ports	✓				
Operator presence switch	✓				
Emergency Hammer		✓			
Window shades		✓			

(continued on next page)

+Included in Waste Handler Package

*Recommended

D7 Waste Handler Standard and Optional Equipment

Standard and Optional Equipment (continued)

Standard and optional equipment may vary. Consult your Cat dealer for details.

	Standard	Optional		Standard	Optional
HYDRAULICS			ATTACHMENTS		
Load-sensing hydraulics	✓		Single-shank ripper		✓
Independent steering and implement pumps	✓		Multi-shank ripper		✓
Guarded blade hydraulic hoses	✓		PA110 Hydraulic Winch		✓
Rear hydraulics ripper ready	✓		Drawbar		✓
ELECTRICAL			GUARDING AND SCREENS		
Lights – 6 LED	✓		Bottom guards – heavy-duty and sealed	+	
Premium lights – 12 LED		✓	Fuel tank guards	+	
Backup alarm	✓		Front striker bards for Standard D7 with 560 mm (22 in) tracks		✓
Beacon warning light	+		Grab handles	✓	
Converter: 15 Amp, 12V outlet	✓		Guards for premium lights, front and side		✓
Forward warning horn	✓		Sweeps package		✓
SERVICE AND MAINTENANCE			Rear fixed screen		
30-minute cab removal	✓		Hinged rear screen		
Centralized, remote mounted pressure taps	✓		Hinged side screen		
Ecology drains	✓				
Extended service intervals (500 hours engine, 1,000-hour power train)	✓				
Ground level service center (remote electrical disconnect, secondary shutdown switch, hour meter)	✓				
Fast fuel fill		✓			
High-speed oil change		✓			
Heavy duty perforated radiator doors, louvered and hinged	✓				
Quick access cab floor	+				
Under hood work light		✓			
Removable engine enclosures, perforated and hinged	✓				
Scheduled Oil Sampling (S·O·S SM) ports	✓				
Shovel holder	✓				
STARTERS, BATTERIES, AND ALTERNATORS					
150 Amp ducted alternator	+				
24 Volt starter	✓				
Engine coolant, –37° C (–35° F)	✓				
Arctic engine coolant, –51° C (–60° F)		✓			

+Included in Waste Handler Package

*Recommended



D7

Pipeline/Forestry

Take on the demands of land clearing and pipeline work with factory-installed equipment designed to help protect the operator and the machine in harsh applications.

Fully Automatic, Next Generation Performance

- Harness more weight and more horsepower than D7E.
- Fully automatic 4-speed powershift transmission continuously adjusts for maximum efficiency and power to the ground without added operator input.
- Elevated sprocket gives you better ride and balance, plus more penetration force.
- Long undercarriage is standard, with more track at the rear of the machine for superior dozing performance.

Added Machine Protection

- Optional high debris cab has impact-resistant polycarbonate doors.
- Optional attachments like rear and side window screens, sweeps and heavy duty handholds help protect the machine and operator from debris.
- Heavy duty guarding package with heavy duty bottom guards and fuel tank guard to help shield major machine components.
- Reversing fan helps remove debris with less maintenance time.
- Pre-cleaner and roof-mounted filter help protect against dust and debris.
- 12 premium LED lights illuminate the work area.

Equipped for the Job

- Redesigned C-frame for Angle blades, D8-size pins and bearings add durability for harsh applications.
- Factory connections make it easy to fit the machine with a winch or ripper. Consult with your Cat dealer regarding available winch, ripper and other attachments options.
- Choose Standard or LGP configuration from the factory.
- Press-fit bushings and Positive Pin Retention (PPR2) are particularly well suited for applications such as forestry, waste, rock and v-ditching.
- Outfit your dozer with Angle, Semi-Universal (SU) or Straight (S) blade to suit pipeline work.
- Forestry/land clearing blades are equipped with brush rack to aid carrying, plus added guarding on the back of the blade to help protect machine components.

D7 Pipeline/Forestry Specifications

D7 Pipeline/Forestry Features

Choose from a variety of options to ideally equip your dozer for the work you do.

- 1) Redesigned C-frame for Angle blades, D8-size pins and bearings add durability for harsh applications.
- 2) Reversing fan option helps remove debris with less maintenance time.
- 3) Optional high debris cab has impact-resistant polycarbonate doors.
- 4) Optional attachments like rear and side window screens, sweeps and heavy duty handholds help protect the machine and operator from debris.
- 5) Heavy duty guarding package with heavy duty bottom guards and fuel tank guard to help shield major machine components.



- 6) Factory connections make it easy to fit the machine with a winch or ripper.
- 7) Press-fit bushings and Positive Pin Retention (PPR2) are particularly well suited for applications such as forestry, waste, rock and v-ditching.
- 8) 12 premium LED lights illuminate the work area.
- 9) Purpose-built Blades
- 10) Choose Standard or LGP configuration from the factory.

Engine

Engine Model	Cat® C9.3B	
Emissions	U.S. EPA Tier 4 Final/ EU Stage V/Japan 2014/ Korea Tier 5/China Nonroad Stage IV	
Power Train	Fully Automatic 4-Speed	
Net Power (2,050 rpm)		
ISO 9249/SAE J1349	197 kW	264 hp
ISO 9249 (DIN)	268 mhp	
Engine Power (1,600 rpm)		
ISO 14396	230 kW	308 hp
ISO 14396 (DIN)	313 mhp	
Gross Power: SAE J1995:2014	294 kW	394 hp
Bore	115 mm	4.5 in
Stroke	149 mm	5.9 in
Displacement	9.3 L	567.52 in ³

- Net power advertised is the power available at the flywheel when the engine is equipped with fan, air cleaner, muffler, and alternator.
 - Advertised power is tested per the specified standard in effect at the time of manufacture.
 - No derating required up to 3261 m (10,700 ft) altitude, beyond 3261 m (10,700 ft) automatic derating occurs.
 - Cat diesel engines are required to use ULSD (ultra-low sulfur diesel fuel with 15 ppm of sulfur or less) or ULSD blended with the following lower-carbon intensity fuels up to:
 - ✓ 20% biodiesel FAME (fatty acid methyl ester)*
 - ✓ 100% renewable diesel, HVO (hydrotreated vegetable oil) and GTL (gas-to-liquid) fuels
- Refer to guidelines for successful application. Please consult your Cat dealer or “Caterpillar Machine Fluids Recommendations” (SEBU6250) for details.

*Engines with no aftertreatment devices can use higher blends, up to 100% biodiesel.

Fluid/Refill Capacities

Fuel Tank	465 L	122.8 gal
Diesel Exhaust Fluid (DEF) Tank	44 L	11.6 gal
Cooling System	62 L	16.4 gal
Engine Crankcase	28 L	7.4 gal
Power Train	187 L	49.4 gal
Final Drives (each)	13 L	3.4 gal
Roller Frames Standard/LGP (each)		
Minimum	85 L	22.5 gal
Maximum	96 L	25.4 gal
Hydraulic System	144 L	38 gal

Air Conditioning System

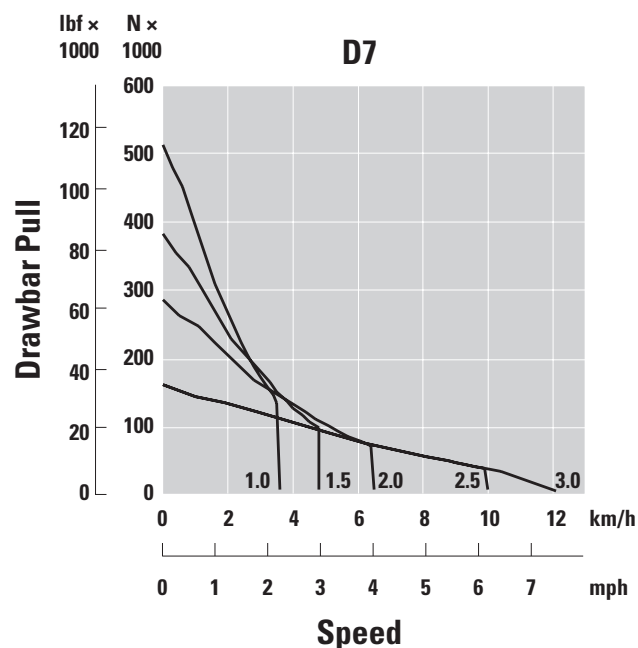
The air conditioning system on this machine contains the fluorinated greenhouse gas refrigerant R134a (Global Warming Potential = 1430). The system contains 1.36 kg of refrigerant which has a CO₂ equivalent of 1.946 metric tonnes.

Transmission

1.0 Forward	3.5 km/h	2.17 mph
1.5 Forward	4.8 km/h	2.98 mph
2.0 Forward	6.4 km/h	3.97 mph
2.5 Forward	9.0 km/h	5.59 mph
3.0 Forward	11.4 km/h	7.08 mph
1.0 Reverse	3.5 km/h	2.17 mph
1.5 Reverse	4.8 km/h	2.98 mph
2.0 Reverse	6.3 km/h	3.91 mph
2.5 Reverse	8.5 km/h	5.28 mph
3.0 Reverse	11.4 km/h	7.08 mph

Drawbar Pull

1.0 Forward	659.2 kN	148,194 lbf
1.5 Forward	490.8 kN	110,336 lbf
2.0 Forward	366.1 kN	82,303 lbf
2.5 Forward	X kN	X lbf
3.0 Forward	205.8 kN	46,266 lbf



D7 Pipeline/Forestry Specifications

Hydraulic Controls

Pressures

Maximum Implement Operating Pressure	31 000 kPa	4,496 psi
Maximum Steering Operating Pressure	38 000 kPa	5,511 psi
Bulldozer Relief Valve Setting	24 000 kPa	3,481 psi
Tilt Cylinder Relief Valve Setting	24 000 kPa	3,481 psi
Ripper (Lift) Relief Valve Setting	24 000 kPa	3,481 psi
Ripper (Pitch) Relief Valve Setting	24 000 kPa	3,481 psi
Pump Output (1,900 rpm engine speed)*		
Pump Type	Piston-type, Variable Displacement	
Pump Output (Steering)	267 L/min	70.5 gal/min
Pump Output (Implement)	220 L/min	58.1 gal/min
Pump Output (Fan)	56 L/min	14.8 gal/min
Lift Cylinder Flow	220 L/min	58.1 gal/min
Tilt Cylinder Flow	170 L/min	44.9 gal/min
Ripper Cylinder Flow	220 L/min	58.1 gal/min

*Engine speed varies with load and travel speed. A high idle/low working load speed shown.

Advanced Cabin Filtration

Operator Cabin

- Distributed HVAC ducting with automatic temperature control and blower speed provides ultimate operator comfort with less user input.
- Reduced maintenance of the condenser core with automatic reversing fans.
- Cat Advanced Cabin Filtration is standard.

Cat Advanced Cabin Filtration

- Operator protection from respirable particulate (0.3-10-micron size).
- Sustainably pressurized cab (U.S. Silica compliant).
- Reduced maintenance with longer life, high efficiency filters.
- Protection for all cabin components: electronics, etc.
- Helps meet U.S. Occupational Safety and Health Administration Silica Rule Table 1 requirements for operator cabs.
- Multi-tiered filter offerings for optional efficiency upgrades. Contact Cat dealer for availability.
 - MERV 16 – Standard Equipment
 - HEPA
 - Activated Carbon + HEPA
 - ABEK1 + HEPA

Standards

Sound Level Information

- Hearing protection may be needed when the machine is operated with an open operator station, in a noisy environment, with a cab that is not properly maintained, or when the doors and windows are open for extended periods of time.

Sound Level	Test Method	
Operator Sound Pressure Level	77 dB(A)	"ISO 6396:2008" ⁽¹⁾
	77 dB(A) *	
Exterior Sound Pressure Level	112 dB(A)	"ISO 6395:2008" ⁽²⁾
	112 dB(A) *	"ISO 6395:1988" ⁽²⁾

*For machines required to meet applicable regional regulations of Ukraine, United Kingdom, and Countries that Adopt the "EU Directive"; or machines equipped with the sound-suppression package.

⁽¹⁾The measurement was conducted at 70% of the maximum engine cooling fan speed. The sound level may vary at different engine cooling fan speeds. The measurement was conducted with the cab doors and the cab windows closed. The cab was properly installed and maintained.

⁽²⁾The measurement was conducted at 70% of the maximum engine cooling fan speed. The sound level may vary at different engine cooling fan speeds.

- The sound levels listed above include both measurement uncertainty and uncertainty due to production variation.

Rollover Protective Structure (ROPS)/Falling Object Protective Structure (FOPS)

- ROPS meets the following criteria: ISO 3471:2008.
- FOPS meets the following criteria: ISO 3449:2005 Level II.

Brakes

- Brakes meet the standard ISO 10265:2008.

D7 Pipeline/Forestry Specifications

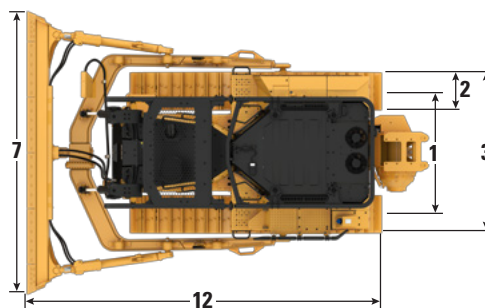
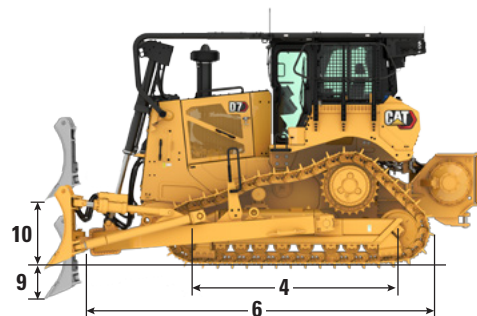
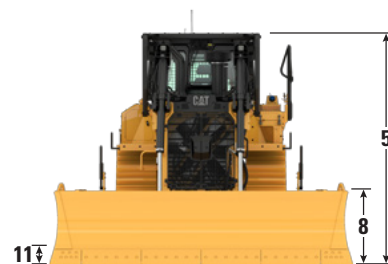
D7 Pipeline/Forestry

Operating Weight ¹	30 766 kg	67,827 lb
Shipping Weight ²	26 210 kg	57,783 lb
Ground Pressure (ISO 16754)	74.3 kPa	10.78 psi
Undercarriage	41 Sections with 8 Bottom Rollers	
1 Track Gauge	1.98 m	6'6"
2 Width of Track Shoe (Standard)	610 mm	24.0 in
3 Width of Tractor (without trunnions)	2.79 m	9'2"
4 Length of Track on Ground	3.02 m	9'11"
Ground Contact Area (ISO 16754)	4.06 m ²	43.7 ft ²
Grouser Height (Extreme Service)	82 mm	3.2 in
Ground Clearance	442 mm	17.4 in
5 Machine Height ³ (Tip of Grouser to top of Product Link Antenna)	3.43 m	11'3"
Top of Cab ¹	3.32 m	10'11"
Top of Guardrail	3.31 m	10'10"
6 Length of Basic Tractor	4.66 m	15'3"
Add the following to the total length of the machine when these attachments are installed.		
Drawbar	276 mm	10.9 in
Ripper	1570 mm	61.8 in
Waste Striker Box	450.5 mm	17.7 in
Winch	749.7 mm	29.5 in

¹Operating weight includes Angle blade, lubricants, coolant, full fuel tank, ROPS/FOPS cab, sweeps, hydraulic winch, and 75 kg (165 lb) operator.

²Shipping weight includes blade lift cylinders, lubricants, coolant, 10% fuel, ROPS/FOPS cab, and hydraulic winch.

³Machine height from tip of grouser to top of Product Link Antenna. For sweeps, add 60 mm (2.4 in) to overall machine height. With Moderate Service, subtract 11 mm (0.4 in). When Cat Grade with 3D antennas are installed there is no added machine height.



Standard forestry configuration.
Optional sweeps and screens shown.

Blades

Type	Angle Blade (STD)		Semi-Universal (SU)		Universal (U)	
Capacity (ISO 9246)	4.16 m ³	5.44 yd ³	7.42 m ³	9.70 yd ³	8.59 m ³	11.24 yd ³
7 Width across End bits	4580 mm	180.3 in	3640 mm	143.3 in	3926 mm	154.6 in
Width without End bits	4490 mm	176.8 in	3536 mm	139.2 in	3822 mm	150.5 in
8 Height	1110 mm	43.7 in	1560 mm	61.4 in	1560 mm	61.4 in
9 Dig Depth ⁴	750 mm	29.5 in	580 mm	22.8 in	580 mm	22.8 in
10 Lift Height ⁴	1150 mm	45.3 in	1210 mm	47.6 in	1210 mm	47.6 in
11 Maximum Tilt at Blade Corner ⁴	720 mm	28.3 in	500 mm	19.7 in	565 mm	22.2 in
Maximum Tilt Angle ⁴	9.0°		8.5°		8.5°	
Pitch Adjustment	N/A		±3.0°		±3.0°	
12 Length of Machine with Blade	5.76 m	18'11"	5.79 m	19'0"	6.03 m	19'9"
Blade Weight (blade + push arms installed)	4110 kg	9061	3340 kg	7363 lb	3570 kg	7871 lb

⁴Blade in neutral tilt position (SU, U) or Straight position (Angle)

Cat FirstCut cutting edges are available for Semi-Universal (SU) blades. FirstCut edges provide superior penetration in tough compacted, rocky or frozen soils resulting in improved payloads and productivity. Consult with your Cat dealer for more benefits and details.

D7 Pipeline/Forestry Specifications

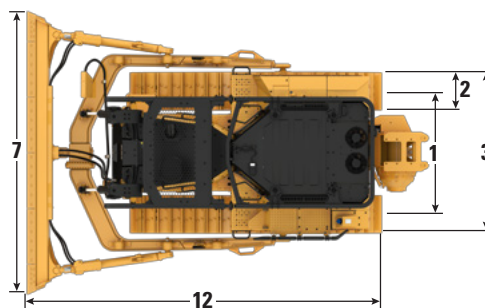
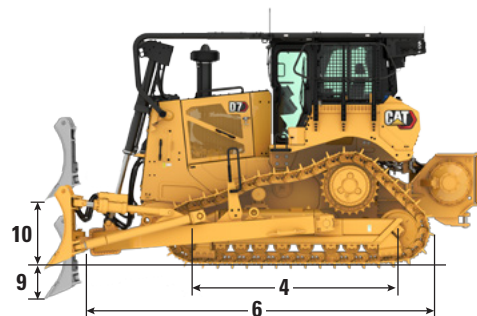
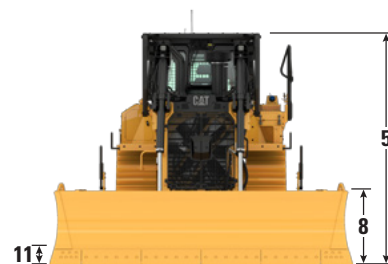
D7 Pipeline/Forestry LGP

Operating Weight ¹	32 696 kg	72,082 lb
Shipping Weight ²	28 140 kg	62,038 lb
Ground Pressure (ISO 16754)	49.2 kPa	7.14 psi
Undercarriage	43 Sections with 9 Bottom Rollers	
1 Track Gauge	2.24 m	7'4"
2 Width of Track Shoe (Standard)	915 mm	36.0 in
3 Width of Tractor (without trunnions)	3.15 m	10'4"
4 Length of Track on Ground	3.24 m	10'8"
Ground Contact Area (ISO 16754)	6.51 m ²	70.1 ft ²
Grouser Height (Moderate Service)	74 mm	2.9 in
Ground Clearance	442 mm	17.4 in
5 Machine Height ³ (Tip of Grouser to top of Product Link Antenna)	3.43 m	11'3"
Top of Cab*	3.32 m	10'11"
Top of Guardrail	3.31 m	10'10"
6 Length of Basic Tractor	4.66 m	15'3"
Add the following to the total length of the machine when these attachments are installed.		
Drawbar	276 mm	10.9 in
Ripper	1570 mm	61.8 in
Waste Striker Box	450.5 mm	17.7 in
Winch	749.7 mm	29.5 in

¹Operating weight includes Angle blade, lubricants, coolant, full fuel tank, ROPS/FOPS cab, sweeps, hydraulic winch, and 75 kg (165 lb) operator.

²Shipping weight includes blade lift cylinders, lubricants, coolant, 10% fuel, ROPS/FOPS cab, and hydraulic winch.

³Machine height from tip of grouser to top of Product Link™ Antenna. For sweeps, add 60 mm (2.4 in) to overall machine height. With Moderate Service, subtract 11 mm (0.4 in). When Cat Grade with 3D antennas are installed there is no added machine height.



Standard forestry configuration.
Optional sweeps and screens shown.

Blades

Type	Angle Blade (LGP)		LGP Straight (S)		LGP Semi-Universal (SU)	
Capacity (ISO 9246)	4.70 m ³	6.15 yd ³	6.11 m ³	7.99 yd ³	8.76 m ³	11.46 yd ³
7 Width across End bits	5030 mm	198.0 in	4310 mm	169.7 in	4240 mm	166.9 in
Width without End bits	4943 mm	194.6 in	4140 mm	163.0 in	4136 mm	162.8 in
8 Height	1110 mm	43.7 in	1370 mm	53.9 in	1560 mm	61.4 in
9 Dig Depth ⁴	670 mm	26.4 in	580 mm	22.8 in	580 mm	22.8 in
10 Lift Height ⁴	1273 mm	50.1 in	1210 mm	47.6 in	1210 mm	47.6 in
11 Maximum Tilt at Blade Corner ⁴	665 mm	26.2 in	510 mm	20.1 in	510 mm	20.1 in
Maximum Tilt Angle ⁴	7.6°		6.6°		6.6°	
Pitch Adjustment	N/A		±3.0°		±3.0°	
12 Length of Machine with Blade	5.98 m	19'7"	5.50 m	18'1"	5.79 m	19'0"
Blade Weight (blade + push arms installed)	4700 kg	10,362 lb	3620 kg	7,981 lb	3780 kg	8,333 lb

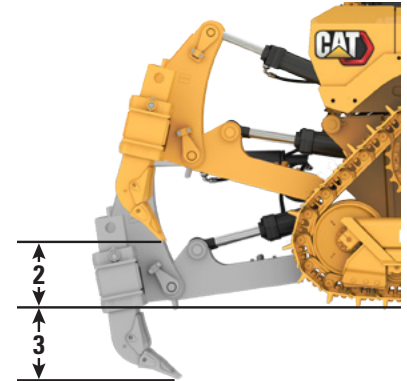
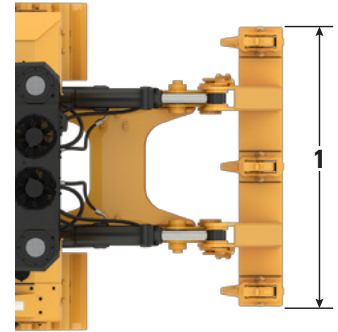
⁴Blade in neutral tilt position (SU, S) or Straight position (Angle).

D7 Pipeline/Forestry Specifications

Ripper

Type	Multi-Shank, Adjustable Parallelogram	
Number of Pockets	3	
Weight with One Shank	3307 kg	7,291 lb
Weight with Three Shanks	3611 kg	7,961 lb
Weight, Standalone Shank	152 kg	335 lb
1 Carriage Width	2211 mm	87.0 in
2 Maximum Clearance, Raised (Shank Tip)	805 mm	31.7 in
3 Maximum Penetration	644 mm	25.3 in
Maximum Penetration Force	100.0 kN	22,481 lb
Maximum Pryout Force*	187.0 kN	42,039 lb

*Measured with one shank



Winch

Model	PA110	
Weight*	2046 kg	4,511 lb
Oil Capacity	15 L	4.0 gal
Increased Tractor Length	749.7 mm	29.5 in
Winch Length	1628 mm	64.1 in
Winch Case Width	1227 mm	48.3 in
Drum Width	330 mm	13.0 in
Flange Diameter	610 mm	24.0 in
Cable Size		
Recommended	29 mm	1.125 in
Optional	32 mm	1.25 in
Drum Capacity – Cable Length		
Recommended	55 m	180'5"
Optional	78 m	255'11"

*Weight includes winch, mounting bracket and hardware, and standard wire rope.

Track Shoes

Some track shoes not available in all regions. Please consult your Cat dealer for details.

	Standard – 41 Section			LGP – 43 Section	
	560 mm (22 in)	610 mm (24 in)	660 mm (26 in)	760 mm (30 in)	915 mm (36 in)
Moderate Service			✓		✓
Extreme Service	✓	✓	✓		✓
Extreme Service Trapezoidal		✓		✓	✓

D7 Pipeline/Forestry Standard and Optional Equipment

Standard and Optional Equipment

Standard and optional equipment may vary. Consult your Cat dealer for details.

	Standard	Optional		Standard	Optional
POWER TRAIN			CAT TECHNOLOGY		
Cat C9.3B diesel engine	✓		Cat Slope Indicate	✓	
Fully-automatic 4-speed transmission with Lock-Up Clutch (LUC) torque divider	✓		Cat Assist with ARO Package*	✓	
Air-to-air aftercooler (ATAAC)	✓		Cat Grade 3D Ready with Assist Package*		✓
Coolant, extended life	✓		Cat Grade 3D with Assist Package*		✓
Diesel Exhaust Fluid (DEF) system – electronic fill indicator, heated lines/tank	✓		Third Party Grade Control Ready Cab	✓	
Differential steering	✓		Product Link, Cellular	✓	
Engine air filter with electronic service indicator	✓		Compatibility with radios and base stations from Trimble, Topcon, and Leica	✓	
Engine air pre-cleaner with dust ejection	✓		Capability to install 3D grade systems from Trimble, Topcon, and Leica	✓	
Engine air pre-cleaner with screen and dust ejection		✓	Product Link – Dual Cellular/Satellite		✓
Engine with thermal shield		✓	Remote Flash/Troubleshoot	✓	
Engine idle shutdown	✓		Grade Connectivity		✓
Final Drives, double reduction – Standard or LGP	✓		Operator ID	✓	
Final Drives, double reduction – Arctic, Waste		✓	Machine Security – Passcode	✓	
Fuel water separator	✓		Machine Security – Bluetooth®		✓
Fuel priming pump, electric	✓		Remote Control Ready	✓	
Fan, hydraulic demand	✓		Cat Command for Dozing		✓
Fan, auto reversing		✓			
Radiator, aluminum bar plate with debris resistant cores	✓				
Sound suppression		✓			
Starting Aid, automatic ether	✓				
Starting Aid, jacket water heater (110V or 220V)		✓			

*Refer to page 8 for technology package details.

(continued on next page)

D7 Pipeline/Forestry Standard and Optional Equipment

Standard and Optional Equipment *(continued)*

Standard and optional equipment may vary. Consult your Cat dealer for details.

	Standard	Optional		Standard	Optional
OPERATOR ENVIRONMENT			UNDERCARRIAGE		
Fully redesigned cab with Integrated ROPS and FOPS, single pane door glass, sliding windows, with Cat Advanced Cabin Filtration	✓		Standard or Low Ground Pressure (LGP) undercarriage	✓	
High debris cab, fully redesigned with Integrated ROPS and FOPS, impact resistant polycarbonate doors, solid side windows for improved sealing, powered precleaner with Cat Advanced Cabin Filtration for improved performance and filter life		✓	Heavy Duty (HDXL with DuraLink™)	✓	
Full-color 254 mm (10 inch) liquid crystal touchscreen display	✓		Rotating bushing track		✓
High Definition rear view camera with backup lines	✓		Waste undercarriage		✓
In-display key machine features	✓		Carrier rollers	✓	
Operator ID/Operator ID with Security	✓		Hydraulic track adjusters	✓	
Cloth seat with mechanical adjustable lumbar support	✓		Lifetime lubricated track and roller	✓	
Deluxe leather heated/ventilated seat with electronic adjustable lumbar support		✓	Moderate service track shoes (see chart on page 29)	✓	
Armrests adjustable fore-aft and vertically	✓		Extreme service track shoes (see chart on page 29)		✓
Electrohydraulic implement and steering controls	✓		Track roller frame guiding guards: center, partial or full NOTE: Center guiding guards standard on LGP machine.		✓
Joystick control – ARO		✓	BLADES		
Decelerator pedal	✓		Semi-Universal (SU)		✓
Fresh air filter	✓		Straight (S)		✓
Powered fresh air filter pre-cleaner		✓	Angle (A)		✓
Cab mounted modular HVAC system with automatic reversing fans. Automatic temperature and blower control with distributed ducting.	✓		Universal (U) [for Standard configuration only]		✓
Communication radio ready	✓		Waste/Landfill		✓
Rearview mirror	✓		Forestry/Land Clearing		*
Retractable 76 mm (3 in) seat belt	✓		Cat FirstCut cutting edges (SU Blades)		✓
Cup holders	✓		Universal Blade – Standard configuration only		✓
Dash foot pads	✓		Cat FirstCut cutting edges (SU blades)		✓
Floor plate and pedals for shorter operators		✓	<i>(continued on next page)</i>		
Entertainment radio with Bluetooth and microphone	✓		*Recommended		
Lunchbox storage	✓				
Wipers	✓				
USB and Auxiliary Ports	✓				
Operator presence switch	✓				
Emergency Hammer		✓			
Window shades		✓			

D7 Pipeline/Forestry Standard and Optional Equipment

Standard and Optional Equipment *(continued)*

Standard and optional equipment may vary. Consult your Cat dealer for details.

	Standard	Optional		Standard	Optional
HYDRAULICS			GUARDING AND SCREENS		
Load-sensing hydraulics	✓		Bottom guards – standard	✓	
Independent steering and implement pumps	✓		Bottom guards – heavy duty and sealed		*
Guarded blade hydraulic hoses	✓		Fuel tank guards		*
Rear hydraulics ripper ready	✓		Grab handles	✓	
ELECTRICAL			Guards for premium lights, front and side		✓
Standard Lights – 4 LED light package	✓		Sweeps package		✓
Upgraded Lights – 6 LED light package		✓	Rear fixed screen		*
Premium Lights – 12 LED light package		✓	Hinged rear screen		✓
Backup alarm	✓		Hinged side screen		✓
Converter, 2-15 Amp, 12 V outlets	✓		ATTACHMENTS		
Horn, forward warning	✓		Multi-shank ripper with CapSure ripper tips and shank protector		✓
Beacon warning light		✓	PA110 Hydraulic Winch		*
SERVICE AND MAINTENANCE			Drawbar		✓
30-minute cab removal	✓		Rear striker box with striker bar		✓
Centralized, remote mounted pressure taps	✓				
Ecology drains	✓				
Extended service intervals (500 hours engine, 1,000-hour power train)	✓				
Ground level service center (remote electrical disconnect, secondary shutdown switch, hour meter)	✓				
Fast fuel fill		✓			
High-speed oil change		✓			
Heavy duty perforated radiator doors, louvered and hinged	✓				
Quick access cab floor		*			
Under hood work light	✓				
Removable engine enclosures, perforated and hinged	✓				
Scheduled Oil Sampling (S·O·S SM) ports	✓				
Shovel holder	✓				
BATTERIES, STARTERS, ALTERNATORS AND COOLANT					
Batteries – Heavy Duty	✓				
Batteries – Arctic		✓			
Starter – 24V	✓				
Alternators – 150 Amp	✓				
Alternators – 150 Amp, ducted		✓			
Engine coolant, standard –37° C (–35° F)	✓				
Engine coolant, arctic –51° C (–60° F)		✓			

*Recommended

For more complete information on Cat products, dealer services, and industry solutions, visit us on the web at www.cat.com

© 2024 Caterpillar
All rights reserved

Materials and specifications are subject to change without notice. Featured machines in photos may include additional equipment. See your Cat dealer for available options.

CAT, CATERPILLAR, LET'S DO THE WORK, their respective logos, "Caterpillar Corporate Yellow," the "Power Edge" and Cat "Modern Hex" trade dress as well as corporate and product identity used herein, are trademarks of Caterpillar and may not be used without permission.

AEXQ3734-00 (08-2024)
Build Number: 17B
(Aus-NZ, Chile, China,
Eur, Japan, N Am,
S. Korea, Turkey)

