



## **OPTIONS AND ACCESSORIES KIT GUIDE**

### **FOR COMPACT WHEEL LOADERS**

#### **MODEL (SERIAL NUMBER PREFIX):**

906 (HZ6/MZ6/LZ6)

907 (HZ7/MZ7)

908 (HZ8/MZ8/LZ8)



**Option/Accessory.....Page Number****ENHANCEMENTS AND VISIBILITY ..... 3**

Camera and Display, Front or Rear.....	3
Lights, Engine Enclosure, LED.....	3
Lights, Work, Halogen (4).....	4
Lights, Work, Halogen (4) and LED (4).....	4
Work Lights, LED, (4).....	5
Work Lights, LED, (8).....	5
Mirrors, Electric and Heated.....	6

**PERFORMANCE AND PRODUCTIVITY ..... 6**

Conversion Harness – 8 Pin to 14 Pin.....	6
Conversion Harness – 14 Pin to 8 Pin.....	7
Fuel Pump, Electric Priming.....	7
Hydraulic Lines – High Flow Auxiliary.....	8
Hydraulic Lines, Standard Flow Auxiliary – HPL-V/A Quick Coupler.....	8
Hydraulic Lines, Standard Flow Auxiliary – Skid Steer Loader (SSL).....	9
Hydraulic Lines, 2nd Auxiliary.....	9
Hydraulic Line, Standard to High Flow.....	10
Joystick Conversion, Single Auxiliary.....	10
Joystick Conversion, Twin Auxiliary.....	11
Keypad, 8-Button.....	11
Keypad, 16-Button.....	12
Keypad, 8 to 16-Button.....	12
Kickouts, Rotary Sensor.....	13
Quick Coupler, HPL-V.....	13
Quick Coupler, HPL-V for High Lift.....	14
Quick Coupler, HPL-V TO HPL-A.....	14
Quick Coupler, Skid Steer Loader.....	15
Quick Coupler, Skid Steer Loader for High Lift.....	15
Quick Coupler Lines, HPL-V.....	16
Quick Coupler Lines, Skid Steer Loader.....	16
Retrieval Hitch, Rear Services Ready.....	17
Reversing Fan.....	17
Ride Control.....	18
Starting Aids, 120V.....	18
Starting Aids, 240V.....	19
Work Tool Harness, 14-Pin.....	19

**Option/Accessory.....Page Number****MAINTENANCE IMPROVEMENT ..... 20**

Engine Pre-cleaner.....	20
-------------------------	----

**EEMISSIONS AND REGULATIONS ..... 20**

Beacon, Magnetic LED Amber.....	20
Beacon, Magnetic LED Green.....	21
Beacon, Magnetic LED Green.....	21
License/Number Plate, Front.....	22
License Plate, Rear Lights.....	22
Lights, Rooding, LED (Front, Left Side).....	23
Lights, Rooding, LED (Front, Right Side).....	23
Load Check Valves.....	24
Product Link™ Elite.....	24
Sound Suppression, Low.....	25

**COMFORT AND CONVENIENCE ..... 25**

13 Pin Rear Electrical.....	25
Air Conditioning, Upgrade from Heater.....	26
Cab Filters, Carbon.....	26
Cab Filters, MERV-16.....	27
Cellphone Holder.....	27
Cool Box, Air Vent.....	28
Push to Start.....	28
Radio.....	29
Seatbelt, High Visibility with 4-Point.....	29
Seatbelt, High Visibility with Indicator.....	30
Step, Extra (Left Side).....	30
Storage Box, Cab.....	31
Toolbox, Engine Bay.....	31
Visor, Rear Perforated Rear.....	32

**SECURITY ..... 32**

Bluetooth Key (spare).....	32
Bluetooth Security.....	33

**GUARDING ..... 33**

Coupler Guard, Horizontal.....	33
Light Guards, Front.....	34
Light Guards, Rear.....	34

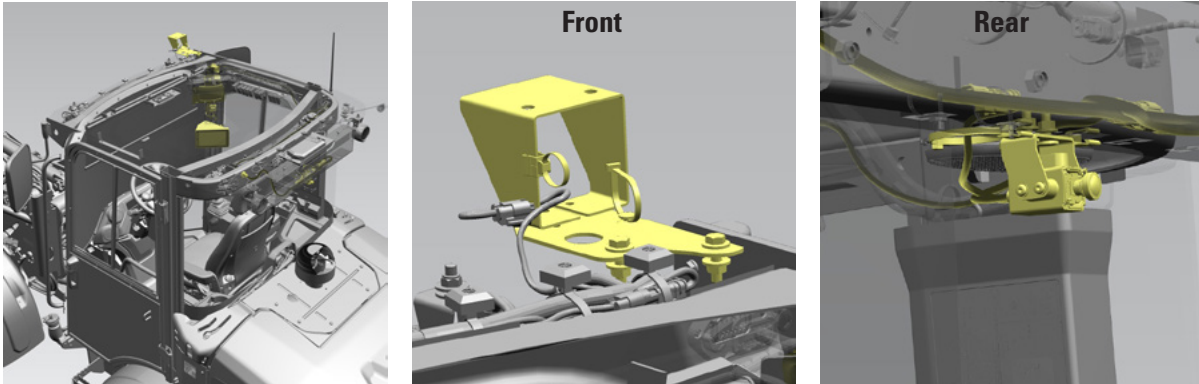
**Note:** Estimated install times are for customer to do a do it yourself (DIY) installation. If no time is listed, then dealer will be required to install.

# ENHANCEMENTS AND VISIBILITY

## Camera and Display, Front *OR* Rear

Provides a secondary “always on” display located above or below the main display with either a FRONT view camera mounted on front right side of cab roof, or a REAR camera mounted at the rear of the cab roof. Provides a high-definition quality view to the front or rear of the machine. A forward camera may be required for local European Union (EU) requirements, contact your local Cat® dealer.

**NOTE:** Can only install front OR rear camera, not both. Cannot support two views on one display nor two camera displays.

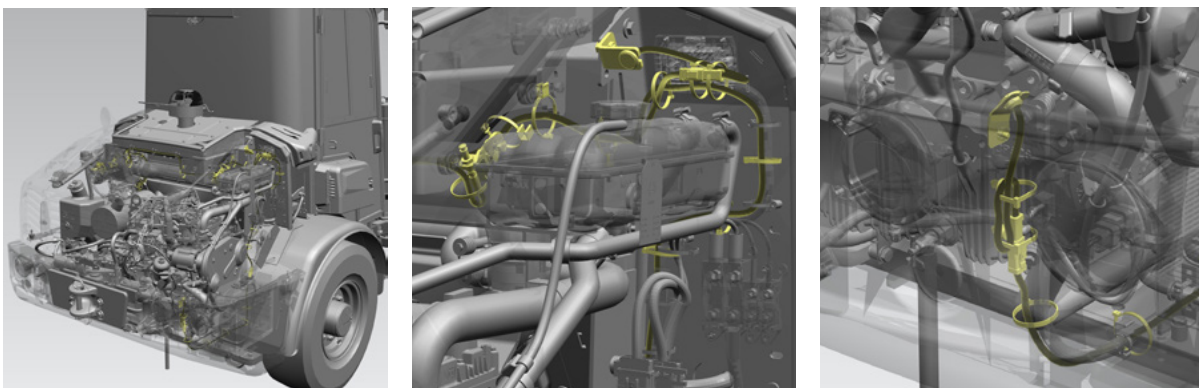


Model	Serial Number Prefix	Part Number	Estimated Install Time
906	HZ6/MZ6/LZ6	619-1554*	Recommended Dealer Install
907	HZ7/MZ7		
908	HZ8/MZ8/LZ8		

\*Requires any cab work light option.

## Lights, Engine Enclosure, LED

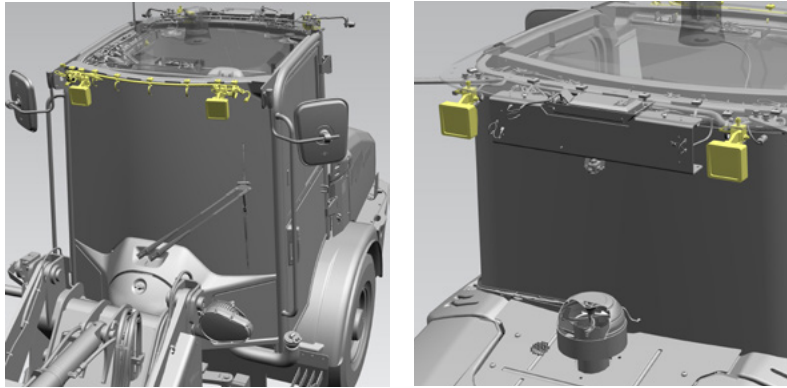
Provides (4) under the hood LED lights to aid fluid/filter checks and fills during daily inspections. Connects to harness in engine bay and mounting provided as standard and included hood hinge activated on/off switch.



Model	Serial Number Prefix	Part Number	Estimated Install Time
906	HZ6/MZ6/LZ6	615-4883	3.0 Hours
907	HZ7/MZ7		
908	HZ8/MZ8/LZ8		

## Lights, Work, Halogen (4)

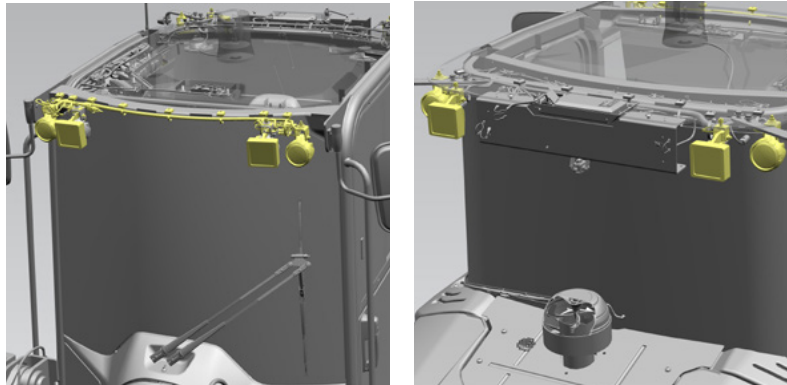
Provides (4) square roof mounted working halogen (HAL) lights, working flood lights, wiring harness and in-cab switch to go from (0) no working lights to (4) HAL lights (55 watt [W] each). HAL lights can be placed next to and used in addition to original halogen units. If fitted on the outside corner positions, they can be rotated to give a full 360-degree light coverage.



Model	Serial Number Prefix	Part Number	Estimated Install Time
906	HZ6/MZ6/LZ6	614-8195	1.0 Hour
907	HZ7/MZ7		
908	HZ8/MZ8/LZ8		

## Lights, Work, Halogen (4) and LED (4)

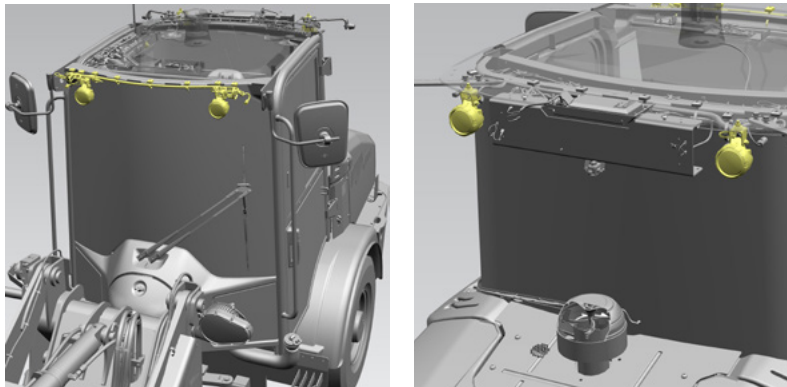
Provides roof mounted work lights; (4) round LED (1000 lm each) outer lights, (4) square HAL (55 W each) inner lights, wiring harness and in cab switch to go from (0) no working lights to (8) mixed LED/HAL lights. The outside corner positions can be rotated to give full 360 light coverage.



Model	Serial Number Prefix	Part Number	Estimated Install Time
906	HZ6/MZ6/LZ6	614-8196	1.0 Hour
907	HZ7/MZ7		
908	HZ8/MZ8/LZ8		

## Work Lights, LED, (4)

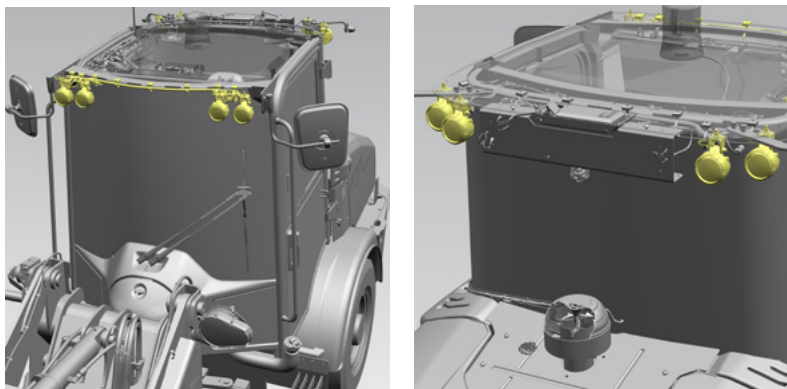
Provides (4) round roof mounted working LED lights, working flood lights, wiring harness and in-cab switch to go from (0) no working lights to (4) LED working lights (1000 lm each). LED lights can be placed next to and used in addition to original halogen units or can replace original halogen units. If fitted on the outside corner positions, they can be rotated to give a full 360 light coverage.



Model	Serial Number Prefix	Part Number	Estimated Install Time
906	HZ6/MZ6/LZ6	614-8194	1.0 Hour
907	HZ7/MZ7		
908	HZ8/MZ8/LZ8		

## Work Lights, LED, (8)

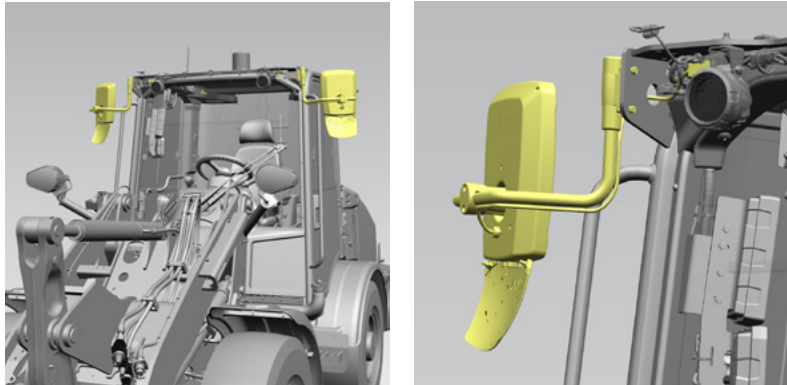
Provides (8) round roof mounted working LED lights, wide working flood lights, wiring harness and in-cab switch to go from (0) no working lights to (8) LED working lights (1000 lm each). The outside corner positions can be rotated to give full 360 light coverage.



Model	Serial Number Prefix	Part Number	Estimated Install Time
906	HZ6/MZ6/LZ6	614-8197	1.0 Hour
907	HZ7/MZ7		
908	HZ8/MZ8/LZ8		

## Mirrors, Electric and Heated

Provides two (2) large heated electronically adjustable mirrors with knock back multi position arms. The large surface area and curvature enables excellent visibility to the side and rear of the machine. Additionally, a lower parabolic mirror further enhances visibility down to the ground in and around the rear wheelbase and steps.



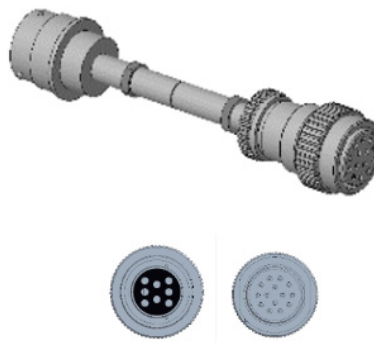
Model	Serial Number Prefix	Part Number	Estimated Install Time
906	HZ6/MZ6/LZ6	619-1570*	2.0 Hours
907	HZ7/MZ7		
908	HZ8/MZ8/LZ8		

\*Requires any cab work light option for power connection.

## PERFORMANCE AND PRODUCTIVITY

### Conversion Harness – 8 Pin to 14 Pin

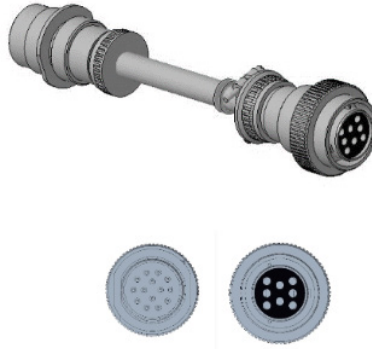
Includes a short harness with 8 pin connector to attach to machine and 14 pin connector to attach to harness on attachment/work tool. Often needed when connecting new attachment to an old machine.



Model	Serial Number Prefix	Part Number	Estimated Install Time
906	HZ6/MZ6/LZ6	375-6445	N/A
907	HZ7/MZ7		
908	HZ8/MZ8/LZ8		

## Conversion Harness – 14 Pin to 8 Pin

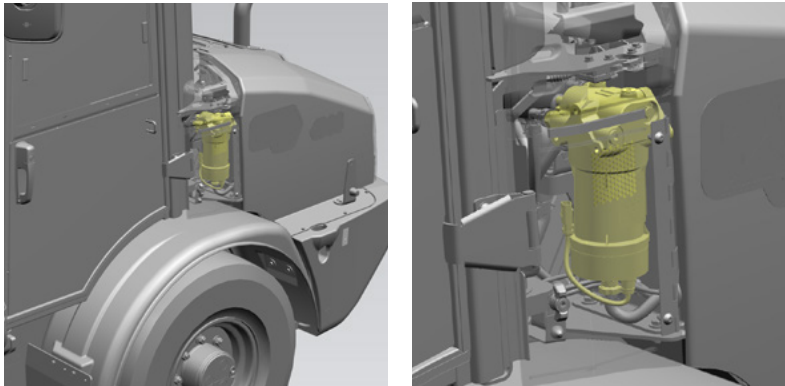
Includes a short harness with 14 pin connector to attach to machine and 8 pin connector to attach to harness on attachment/work tool. Often needed when connecting old attachment to a new machine.



Model	Serial Number Prefix	Part Number	Estimated Install Time
906	HZ6/MZ6/LZ6	377-1579	N/A
907	HZ7/MZ7		
908	HZ8/MZ8/LZ8		

## Fuel Pump, Electric Priming

Provides upgrade from standard manual fuel filter to a high-capacity fuel filter and visible water separator with larger removable element, and electric priming pump. Optional for high debris applications and cold and/or high-altitude regions.

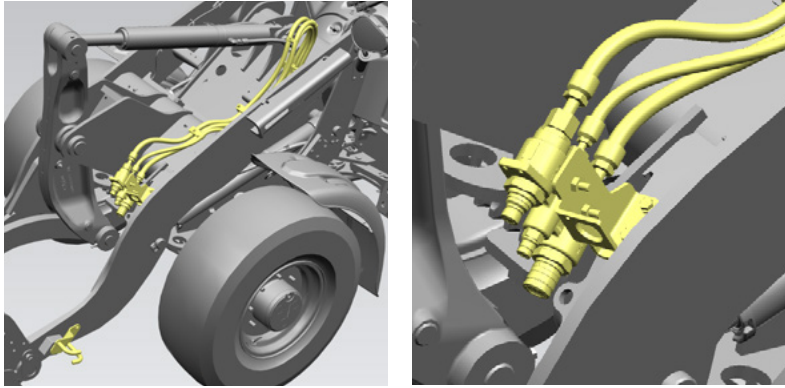


Model	Serial Number Prefix	Part Number	Estimated Install Time
906	HZ6/MZ6/LZ6	619-1553	Recommended Dealer Install
907	HZ7/MZ7		
908	HZ8/MZ8/LZ8		

## Hydraulic Lines – High Flow Auxiliary

Provides high flow auxiliary lines (2) hoses, (3) connections with flow, return, case drain and pressure relief capabilities within the cast block. Mounted on the left-hand side of the loader arm structure between the coupler and the torque tube structure. This position has been optimized to replicate the Cat SSL auxiliary position to maximize sharing and use of SSL interface attachments.

**NOTE:** Auxiliary lines ONLY. Components to upgrade from standard to high flow hydraulic system (pump, valve lives etc.) not included. Can also be used on standard flow machine if you need a case drain for a rotary attachment.

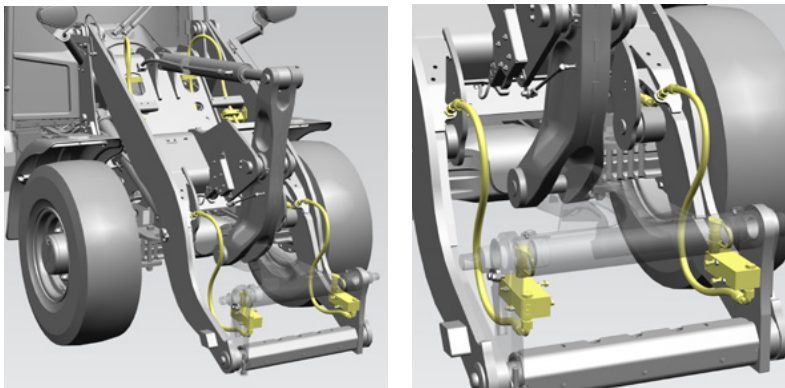


Model	Serial Number Prefix	Part Number	Estimated Install Time
906	HZ6/MZ6/LZ6	624-4459	Recommended Dealer Install
907	HZ7/MZ7		
908	HZ8/MZ8/LZ8	624-4463	

## Hydraulic Lines, Standard Flow Auxiliary – HPL-V/A Quick Coupler

Provides standard flow auxiliary lines (2) hoses (2) connections, flow, and return. Mounted on the rear of the HPL-V and HPL-A coupler. This position has been optimized to share attachments with other OEMs with this style of coupler.

**NOTE:** Valve slice not included. If upgrading from a 2 bank/slice valve, please order valve or valve slice from parts system. If switching from one auxiliary line quick disconnect position to another, you will already have the valve slice fitted.



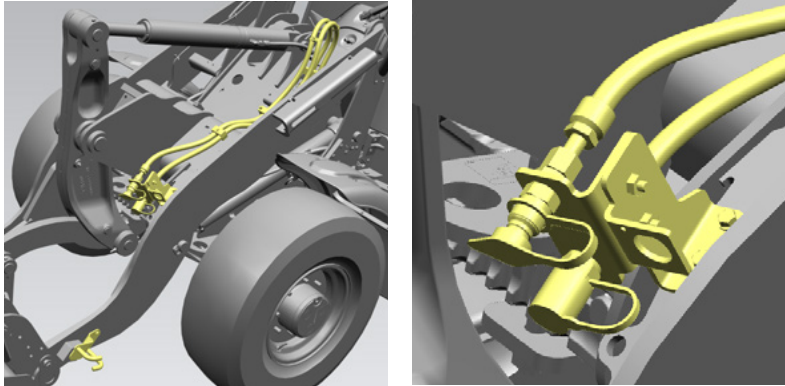
Model	Serial Number Prefix	Part Number	Estimated Install Time
906	HZ6/MZ6/LZ6	624-4458	Recommended Dealer Install
907	HZ7/MZ7		
908	HZ8/MZ8/LZ8	624-4461	



## Hydraulic Lines, Standard Flow Auxiliary – Skid Steer Loader

Provides standard flow auxiliary lines (2) hoses, (2) connections, flow, and return. Mounted on the left-hand side of the loader arm structure between the coupler and the torque tube structure. This position has been optimized to replicate the Cat SSL auxiliary position to maximize sharing and use of SSL interface attachments.

**NOTE:** Valve slice not included. If upgrading from a 2 bank/slice valve, please order valve or valve slice from parts system. If switching from one auxiliary line quick disconnect position to another, you will already have the valve slice fitted.

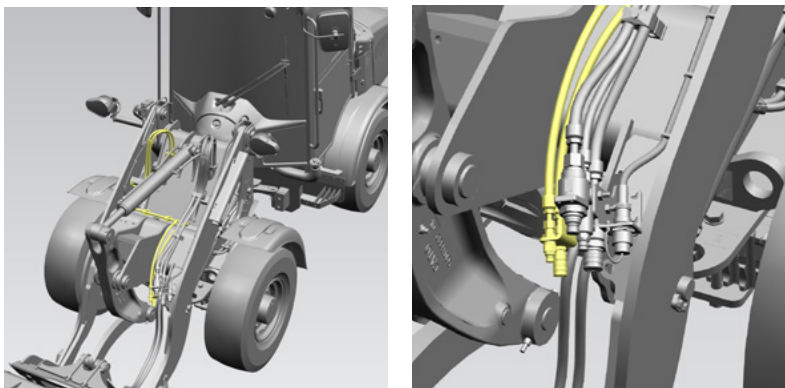


Model	Serial Number Prefix	Part Number	Estimated Install Time
906	HZ6/MZ6/LZ6	624-4457	Recommended Dealer Install
907	HZ7/MZ7		
908	HZ8/MZ8/LZ8	624-4460	

## Hydraulic Lines, 2nd Auxiliary

Provides control flow lines (2) hoses with flow and return, connected to the 2nd auxiliary slice. 4th function mounted on the left-hand side of the loader arm structure between the coupler and the torque tube structure. This position has been optimized to replicate the Cat SSL auxiliary position to maximize sharing and use of SSL interface attachments.

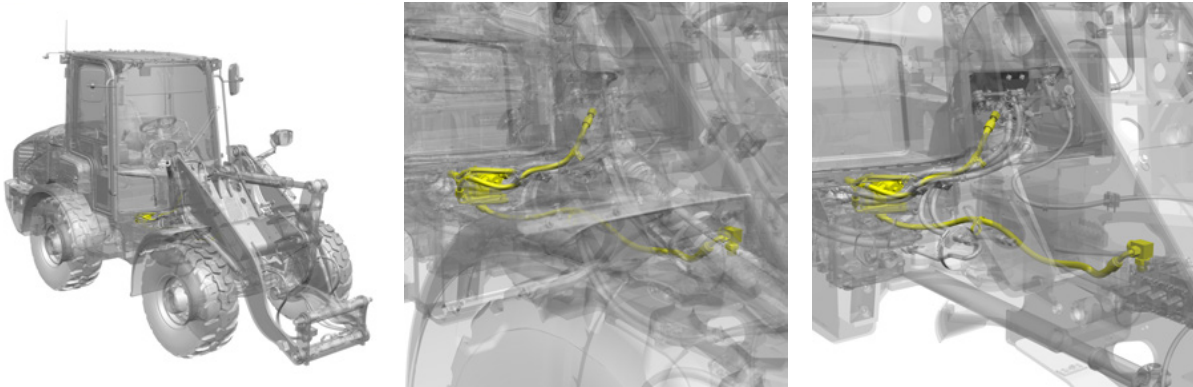
**NOTE:** Valve slice not included. If upgrading from a 3 bank/slice valve, please order valve slice from parts system. RECOMMEND to upgrade to the TWIN AUXILIARY (AUX) ROLLER joystick to enable operation of both auxiliary flows while holding joystick. However, the standard joystick and work tool wiring switches on the right-hand console can be used. Can be used in conjunction with standard flow or high flow (3) valve machine.



Model	Serial Number Prefix	Part Number	Estimated Install Time
906	HZ6/MZ6/LZ6	624-4464	Recommended Dealer Install
907	HZ7/MZ7		
908	HZ8/MZ8/LZ8	624-4466	

## Hydraulic Line, Standard to High Flow

Kit will provide the ability to convert the machine/chassis side hydraulics from standard flow to high flow, to enable improved performance for specific hydraulic work tool attachments.



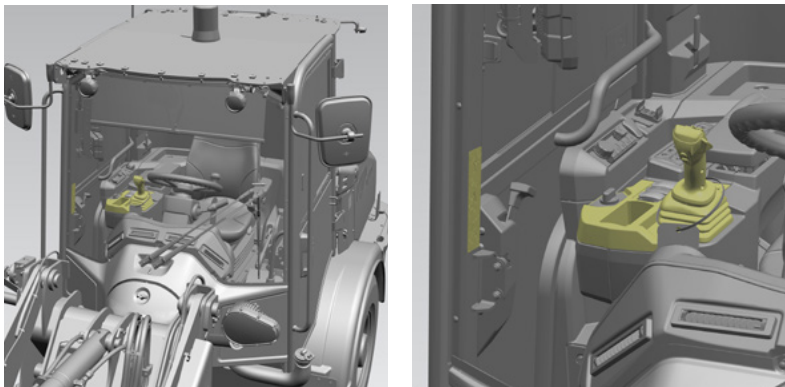
Model	Serial Number Prefix	Part Number	Estimated Install Time
906	HZ6/MZ6/LZ6	638-1025*	Recommended Dealer Install
907	HZ7/MZ7		
908	HZ8/MZ8/LZ8		

\* Includes valve, brackets and components to be fitted under the cab. Does not include high flow auxiliary lines 624-4459 (906/907) or 624-4463 (908). Also requires 616-8591 (14-pin work tool harness for all models).

## Joystick Conversion, Single Auxiliary

Provides the ability to convert the loader control joystick to the “next generation” standard seat mounted multifunction joystick. Enabling operation of forward/neutral/reverse, (1) aux roller, (2) speed range, continuous flow, differential lock, and horn buttons without removing hand from the joystick.

**NOTE:** Includes mounting bracket and non-metallic covers required to complete conversion.

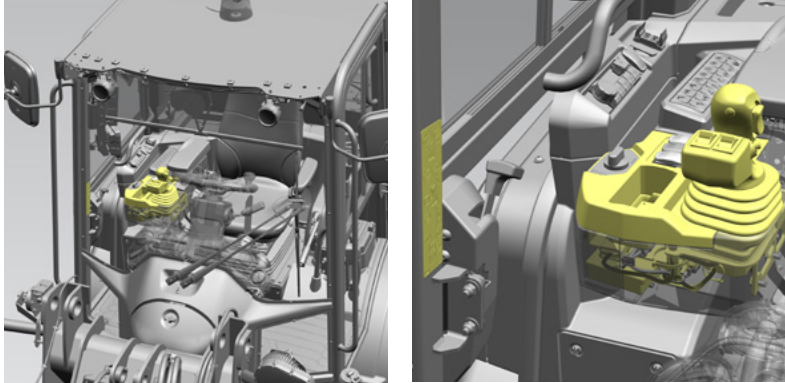


Model	Serial Number Prefix	Part Number	Estimated Install Time
906	HZ6/MZ6/LZ6	616-8593	Recommended Dealer Install
907	HZ7/MZ7		
908	HZ8/MZ8/LZ8		

## Joystick Conversion, Twin Auxiliary

Provides the ability to convert the “standard” loader control joystick to the “twin aux” seat mounted multifunction joystick. Enabling operation of forward/neutral/reverse, (2) aux rollers, differential lock, and horn buttons without removing hand from the joystick.

**NOTE:** Includes mounting bracket and non-metallic covers required to complete conversion.

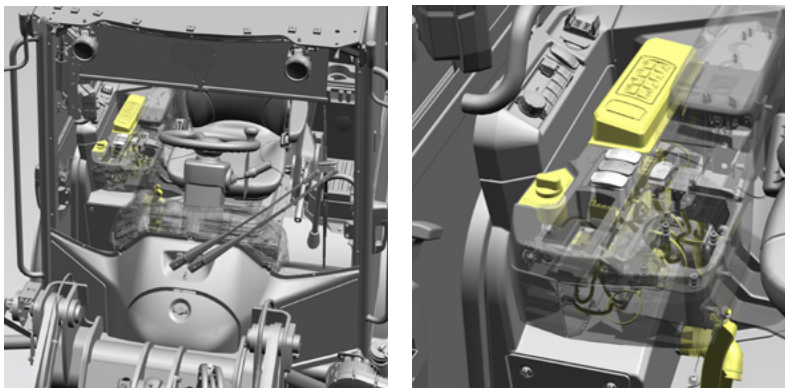


Model	Serial Number Prefix	Part Number	Estimated Install Time
906	HZ6/MZ6/LZ6	619-1528	Recommended Dealer Install
907	HZ7/MZ7		
908	HZ8/MZ8/LZ8		

\*Requires 619-1545 (16-button keypad) for continuous flow and speed range buttons.

## Keypad, 8-Button

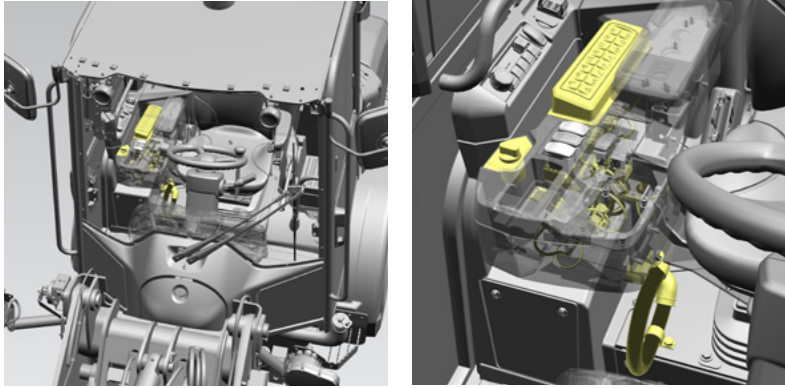
Provides the components to upgrade from no keypad to an 8-button soft touch keypad with backlit icons that illuminate according to machine configuration, including non-metallic cover, mounting bracket, side console harness and creeper rotary dial. When installed it will enable; rimpull, throttle lock, variable speed creep control and “single pedal mode”. Single pedal mode switches operating style to single pedal operation, using throttle lock via the speed range selections versus the ground speed via the right-hand pedal. The left-hand pedal is now breaking only where no inching is needed.



Model	Serial Number Prefix	Part Number	Estimated Install Time
906	HZ6/MZ6/LZ6	619-1544	Recommended Dealer Install
907	HZ7/MZ7		
908	HZ8/MZ8/LZ8		

## Keypad, 16-Button

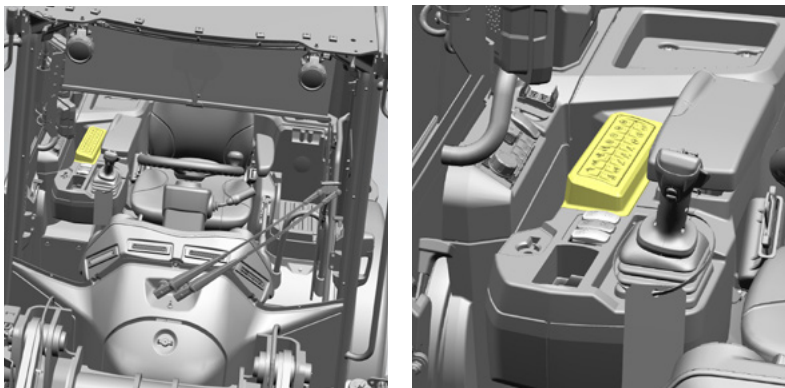
Provides the components to upgrade from no keypad to a 16-button soft touch keypad with backlit icons that illuminate according to machine configuration, including non-metallic cover, mounting bracket, side console harness and creeper rotary dial. When installed it will enable; rimpull, throttle lock, variable speed creep control and "single pedal mode". Single pedal mode switches operating style to single pedal operation, using throttle lock via the speed range selections versus the ground speed via the right-hand pedal. The left-hand pedal is now breaking only where no inching needed. Added functionality of reversing fan control and adding a button for easy, efficient "attachment mode" switching. Also included are the (4) speed range selection buttons needed when using the twin auxiliary control joystick (that has no speed range buttons).



Model	Serial Number Prefix	Part Number	Estimated Install Time
906	HZ6/MZ6/LZ6	619-1545	Recommended Dealer Install
907	HZ7/MZ7		
908	HZ8/MZ8/LZ8		

## Keypad, 8 to 16-Button

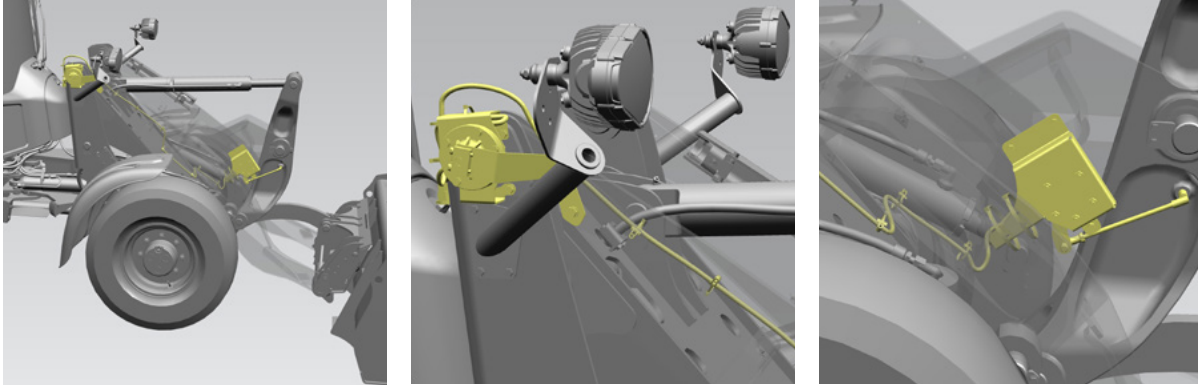
Provides the components to upgrade from an 8-button to a 16-button soft touch keypad with backlit icons that illuminate according to machine configuration, with non-metallic cover, mounting bracket, side console harness and creeper rotary dial. When installed it will enable; rimpull, throttle lock, variable speed creep control and "single pedal mode". Single pedal mode switches operating style to single pedal operation, using throttle lock via the speed range selections versus the ground speed via the right-hand pedal. The left-hand pedal is now breaking only where no inching needed. Added functionality of reversing fan control and adding a button for easy, efficient "attachment mode" switching. Also included are the (4) speed range selection buttons needed when using the twin auxiliary control joystick (that has no speed range buttons).



Model	Serial Number Prefix	Part Number	Estimated Install Time
906	HZ6/MZ6/LZ6	619-1547	Recommended Dealer Install
907	HZ7/MZ7		
908	HZ8/MZ8/LZ8		

## Kickouts, Rotary Sensor

Provides linkage sensors and electrical harnesses which adds electronic control to the loader arm, enabling return to dig, upper and lower kickouts, perfect parallel lift and increased controllability and efficiency with cylinder snubbing. Recommended to maximize operator comfort, reduce fatigue, extend the wear life of bucket Ground Engaging Tools (GET), and improve efficiency in all applications for all operator skill sets.

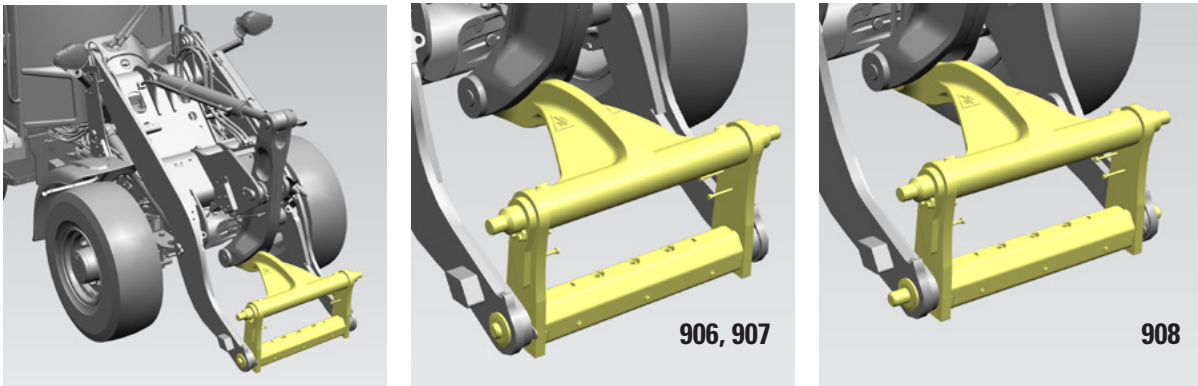


Model	Serial Number Prefix	Part Number	Estimated Install Time
906	HZ6/MZ6/LZ6	614-2267	Recommended Dealer Install
907	HZ7/MZ7		
908	HZ8/MZ8/LZ8		

\*Requires 619-1544 (8 button keypad) or 619-1545 (16 button keypad).

## Quick Coupler, HPL-V

Kit provides an electro-hydraulic HPL-V coupler with horizontal pin locking method to engage with highly utilized interface known as ISO or L30/L35 coupler. Coupler suits attachment hinges sized 860 mm (34 in) wide, 310 mm (12 in) high and 40 mm (2 in) in diameter top/bottom pin. Includes coupler fabrication, tilt linkage, cylinders, and mounting hardware to suit a standard lift loader arm and switch in cab.



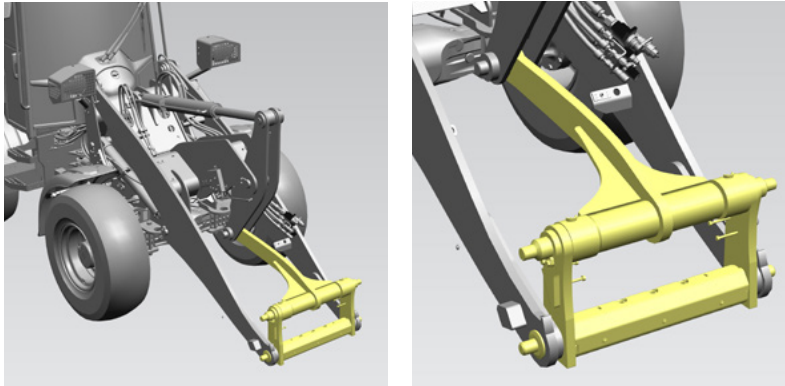
Model	Serial Number Prefix	Part Number	Estimated Install Time
906	HZ6/MZ6/LZ6	610-8283 <sup>^</sup>	Recommended Dealer Install
907	HZ7/MZ7		
908	HZ8/MZ8/LZ8	610-8284 <sup>*</sup>	

<sup>^</sup>Requires 625-2279 (HPL-V quick coupler lines kit).

<sup>\*</sup>Requires 625-2282 (HPL-V quick coupler lines kit).

## Quick Coupler, HPL-V for High Lift

Kit provides an electro-hydraulic HPL-V coupler with horizontal pin locking method to engage with highly utilized interface known as ISO or L30/L35 coupler. Coupler suits attachment hinges sized 860 mm (34 in) wide, 310 mm (12 in) high and 40 mm (2 in) in diameter top/bottom pin. Includes coupler fabrication, tilt linkage, cylinders, and mounting hardware to suit a 908 high lift loader arm and switch in cab.

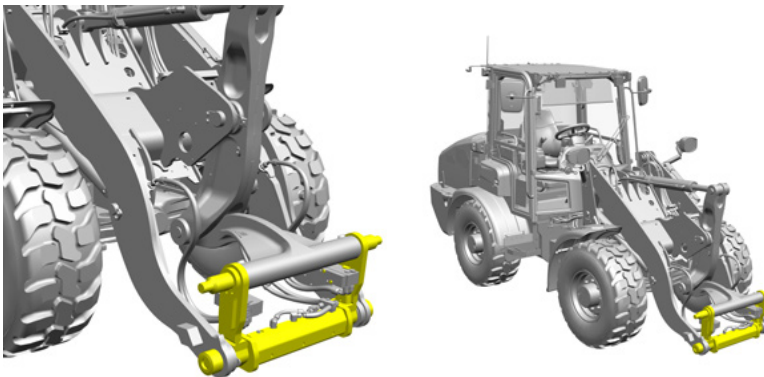


Model	Serial Number Prefix	Part Number	Estimated Install Time
908 High Lift	HZ8/MZ8/LZ8	628-0163*	Recommended Dealer Install

\*Requires 625-2282 (skid steer loader quick coupler lines kit).

## Quick Coupler, HPL-V TO HPL-A

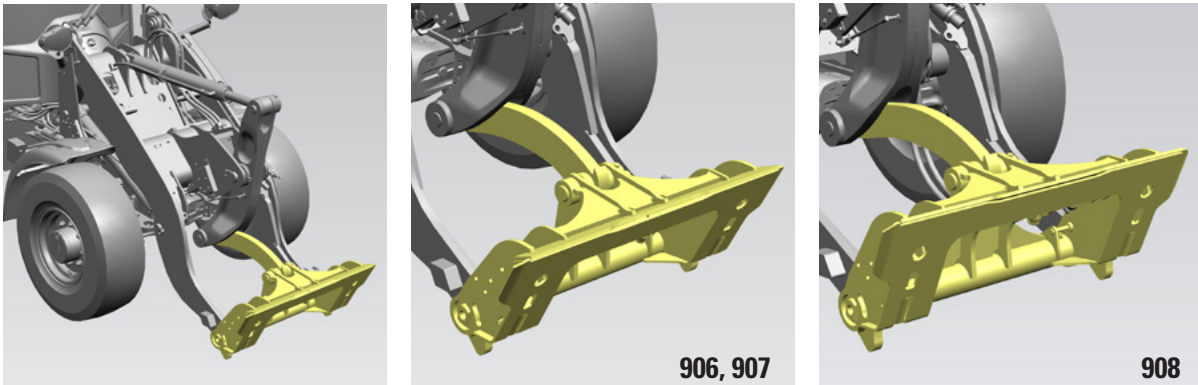
Kit will enable the conversion from a horizontal pin lock coupler (HPL-V) to the alternative slightly wider (HPL-A). Some components will be reused (i.e. the cast link and the hydraulic cylinder to actuate the pins).



Model	Serial Number Prefix	Part Number	Estimated Install Time
906	HZ6/MZ6 /LZ6	635-0731	2.0 Hours
907	HZ7/MZ7		
908/908 High-Lift	HZ8/MZ8/LZ8		

## Quick Coupler, Skid Steer Loader

Provides an electro-hydraulic skid steer loader style coupler with vertical wedge pins to engage on the industry standard interface. System activated from the cab. Includes coupler fabrication, tilt linkage, cylinders, and mounting hardware for a standard lift loader arm and switch in cab.



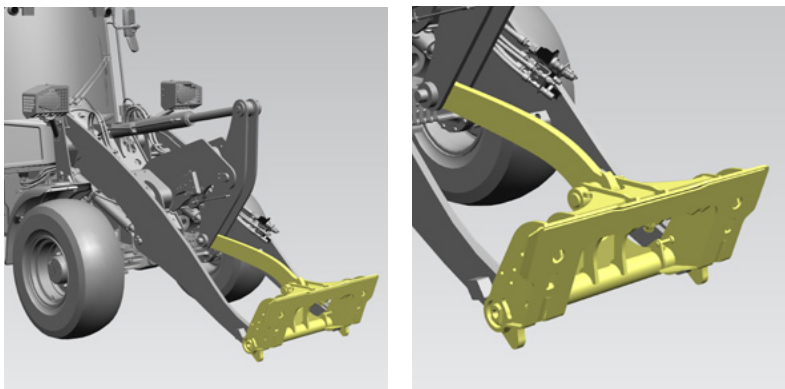
Model	Serial Number Prefix	Part Number	Estimated Install Time
906	HZ6/MZ6/LZ6	610-8285 <sup>^</sup>	Recommended Dealer Install
907	HZ7/MZ7		
908	HZ8/MZ8/LZ8	610-8286*	

<sup>^</sup>Requires 625-2280 (skid steer loader quick coupler lines kit).

\*Requires 625-2281 (skid steer loader quick coupler lines kit).

## Quick Coupler, Skid Steer Loader for High Lift

Provides an electro-hydraulic skid steer loader style coupler with vertical wedge pins to engage on the industry standard interface. System activated from the cab. Includes coupler fabrication, tilt linkage, cylinders, and mounting hardware to suit a 908 high lift loader arm and switch in cab.

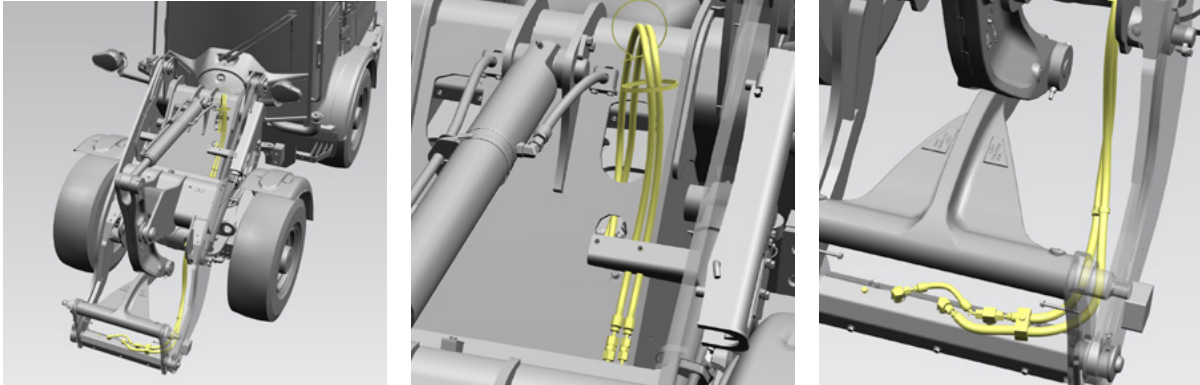


Model	Serial Number Prefix	Part Number	Estimated Install Time
908 High Lift	HZ8/MZ8/LZ8	628-0161*	Recommended Dealer Install

\*Requires 625-2281 (skid steer loader quick coupler lines kit).

## Quick Coupler Lines, HPL-V

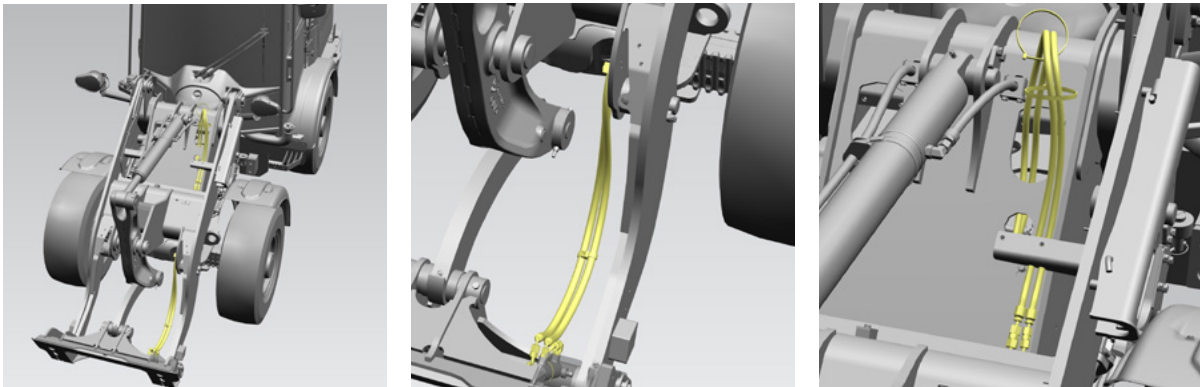
Kit provides hydraulic lines from the main control valve down the arm to the coupler, to control the horizontal pin lock (HPL) coupler pins from within the cab.



Model	Serial Number Prefix	Part Number	Estimated Install Time
906	HZ6/MZ6/LZ6	625-2279	Recommended Dealer Install
907	HZ7/MZ7		
908/908 High Lift	HZ8/MZ8/LZ8	625-2282	

## Quick Coupler Lines, Skid Steer Loader

Kit provides hydraulic lines from the main control valve down the arm to the coupler, to control the skid steer loader coupler pins from within the cab.

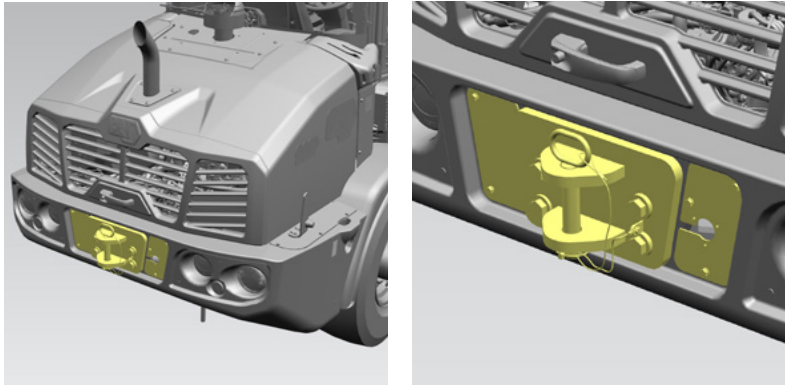


Model	Serial Number Prefix	Part Number	Estimated Install Time
906	HZ6/MZ6/LZ6	625-2280	Recommended Dealer Install
907	HZ7/MZ7		
908/908 High Lift	HZ8/MZ8/LZ8	625-2281	



## Retrieval Hitch, Rear Services Ready

Provides retrieval hitch and pin to be used in situations where machine has become stuck in harsh ground conditions. Ability to fit rear electrical lighting power socket. Additional access panels are provided to enable, aftermarket hydraulic or electrical rear services to be fitted for attachments like sand/salt spreaders (not supplied by Caterpillar at this time).

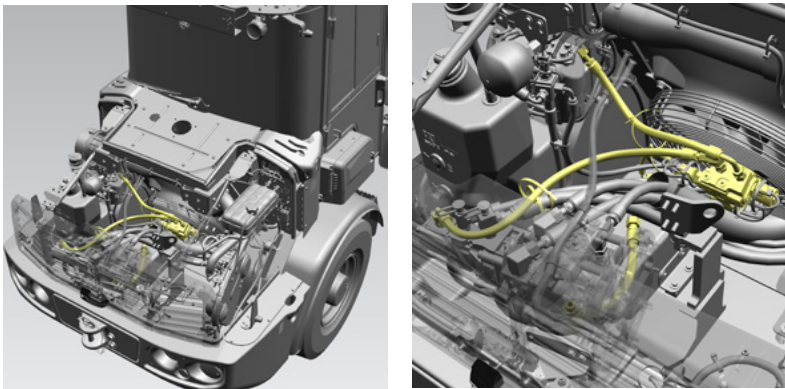


Model	Serial Number Prefix	Part Number	Estimated Install Time
906	HZ6/MZ6/LZ6	614-2251*	Recommended Dealer Install
907	HZ7/MZ7		
908	HZ8/MZ8/LZ8		

\*ONLY for use with 619-1551 (13-pin rear electrical).

## Reversing Fan

Kit provides hydraulically operated reversing fan that can operate manually or automatically with programmable controls to meet application requirements. Recommended for applications with a high content of airborne debris environments, such as waste, industrial, recycling, and agriculture.

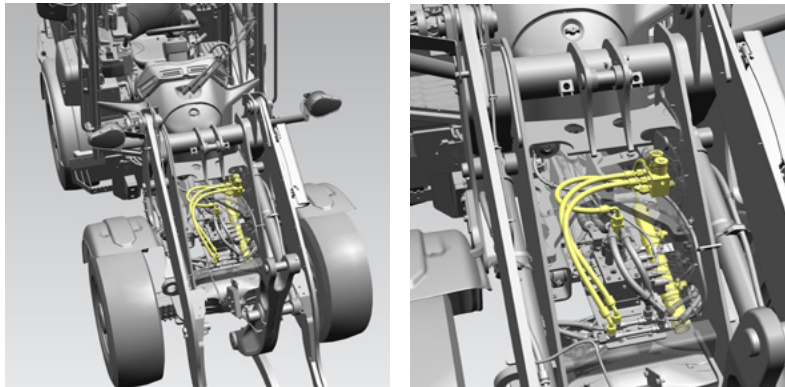


Model	Serial Number Prefix	Part Number	Estimated Install Time
906	HZ6/MZ6/LZ6	619-1543*	Recommended Dealer Install
907	HZ7/MZ7		
908	HZ8/MZ8/LZ8		

\*Requires 619-1545 (16 button keypad).

## Ride Control

Provides hydraulic lines to lift and tilt cylinders and includes an accumulator system to absorb shock and reduce machine bounce to improve ride quality when traveling. In “automatic” mode, ride control is set to activate above 8 kph (5 mph) Includes system active indicator on dash and can be adjusted to site requirements via control monitor.

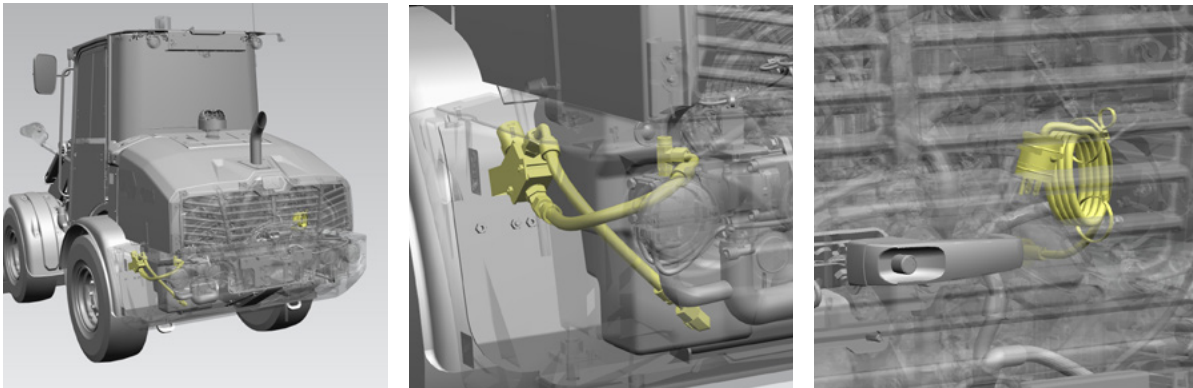


Model	Serial Number Prefix	Part Number	Estimated Install Time
906	HZ6/MZ6/LZ6	614-2269*	Recommended Dealer Install
907	HZ7/MZ7		
908	HZ8/MZ8/LZ8		

\*Cannot be used with 636-3877 (load check valves).

## Starting Aids, 120V

Provides 120V block/jacket water heater and a thermal bypass valve that allows hydraulic oil to bypass the cooler and warm up quickly. Recommended for use in cold climates and altitudes for better cold starting and hydraulic performance. In altitudes higher than 3000 m (9,800 ft) or colder than -18° Celsius (0° Fahrenheit) consult your operation and maintenance manual (OMM) or local Cat dealer for additional steps to aid starting in cold weather.

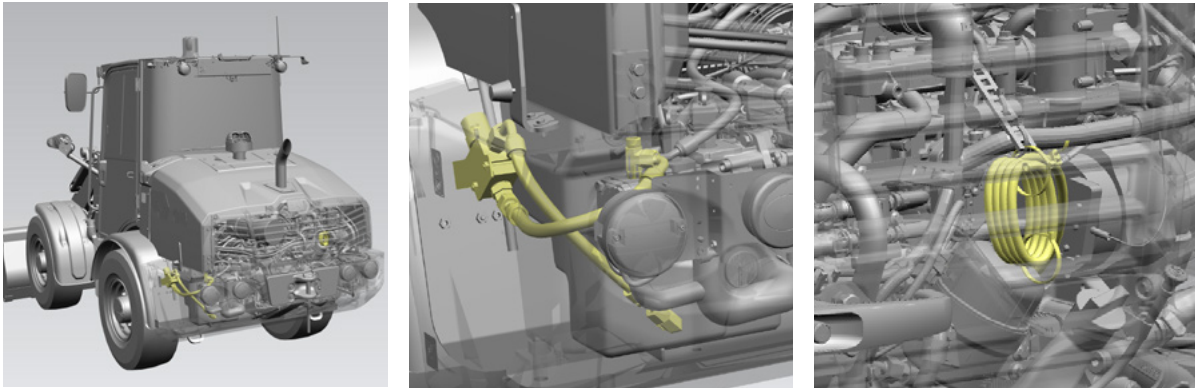


Model	Serial Number Prefix	Part Number	Estimated Install Time
906	HZ6/MZ6/LZ6	615-4885	Recommended Dealer Install
907	HZ7/MZ7		
908	HZ8/MZ8/LZ8		

## Starting Aids, 240V

Provides 240V block/jacket water heater and a thermal bypass valve that allows hydraulic oil to bypass the cooler and warm up quickly. Recommended for use in cold climates and altitudes for better cold starting and hydraulic performance. In altitudes higher than 3000 m (9,800 ft) or colder than  $-18^{\circ}$  Celsius ( $0^{\circ}$  Fahrenheit) consult your operation and maintenance manual (OMM) or local Cat dealer for additional steps to aid starting in cold weather.

**NOTE:** No plug on end of jacket water (JW) heater wire, fit relevant plug for country.

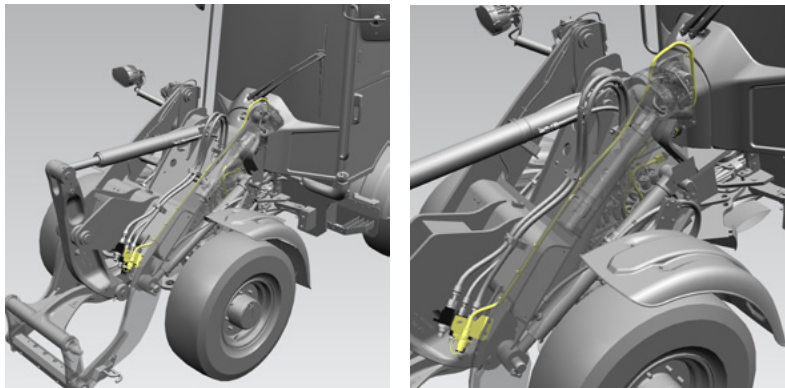


Model	Serial Number Prefix	Part Number	Estimated Install Time
906	HZ6/MZ6/LZ6	615-4887	Recommended Dealer Install
907	HZ7/MZ7		
908	HZ8/MZ8/LZ8		

## Work Tool Harness, 14-Pin

Provides (3) switches in cab, with work tool harness with 14-pin connector to power and operate selected work tools and attachments. For use with all standard flow auxiliary machine configurations.

**NOTE:** All high flow machines have this harness fitted as standard.

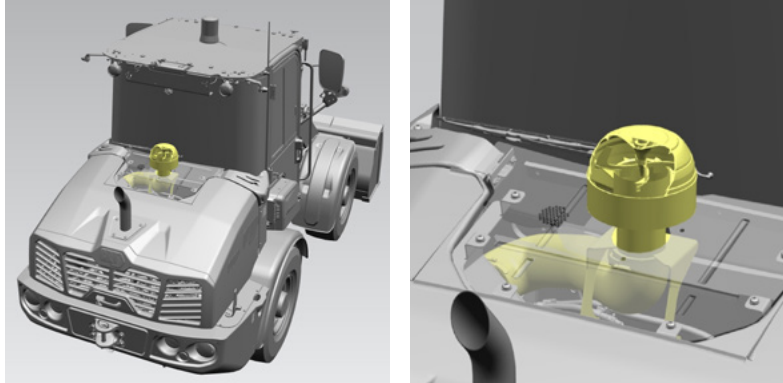


Model	Serial Number Prefix	Part Number	Estimated Install Time
906	HZ6/MZ6/LZ6	616-8591	Recommended Dealer Install
907	HZ7/MZ7		
908	HZ8/MZ8/LZ8		

# MAINTENANCE IMPROVEMENT

## Engine Pre-cleaner

Provides external cyclone pre-cleaner that ejects particles before intake to reduce dust getting to the main engine air filter. Recommended when working in airborne debris environments.

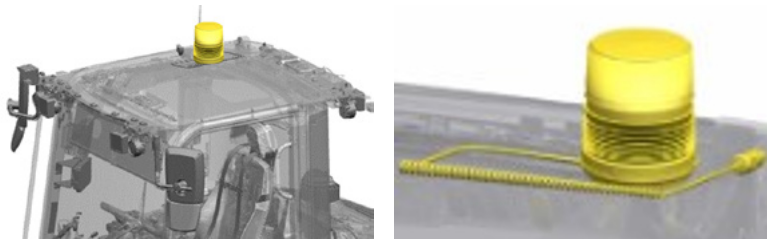


Model	Serial Number Prefix	Part Number	Estimated Install Time
906	HZ6/MZ6/LZ6	615-4881	2.0 Hour
907	HZ7/MZ7		
908	HZ8/MZ8/LZ8		

# EMISSIONS AND REGULATIONS

## Beacon, Magnetic LED Amber

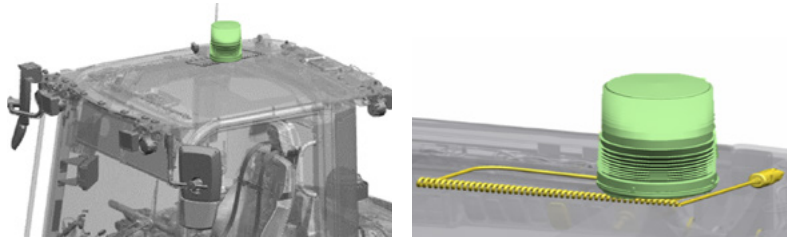
Includes a magnetic flashing LED Amber beacon with power socket adapter and replaceable lens. Optional color lens part numbers – Amber Tall 356-7515, Red Tall 421-5583, Clear Tall 421-5584, Green Tall 421-5585, Blue Tall 392-4977, Green Short 426-5371, Purple Short 601-0110.



Model	Serial Number Prefix	Part Number	Estimated Install Time
906	HZ6/MZ6/LZ6	561-0644	N/A
907	HZ7/MZ7		
908	HZ8/MZ8/LZ8		

## Beacon, Magnetic LED Green

Includes a magnetic flashing LED Green beacon with power socket adapter and replaceable lens. Optional color lens part numbers – Amber Tall 356-7515, Red Tall 421-5583, Clear Tall 421-5584, Green Tall 421-5585, Blue Tall 392-4977, Green Short 426-5371, Purple Short 601-0110.

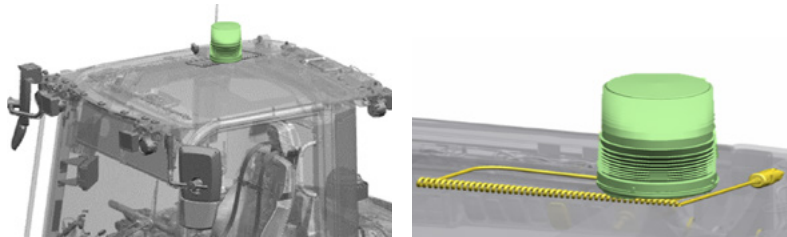


Model	Serial Number Prefix	Part Number	Estimated Install Time
906	HZ6/MZ6/LZ6	614-8690	N/A
907	HZ7/MZ7		
908	HZ8/MZ8/LZ8		

## Beacon, Magnetic LED Green

Includes a magnetic beacon with solid green LEDs and a clear lens, with power socket adapter and replaceable lens.

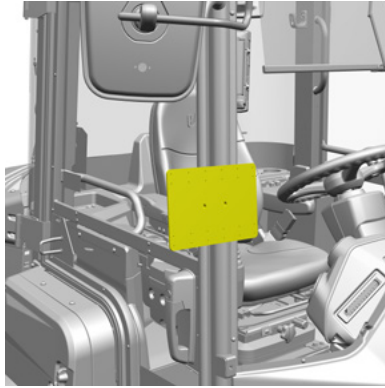
**NOTE:** This beacon does not flash.



Model	Serial Number Prefix	Part Number	Estimated Install Time
906	HZ6/MZ6/LZ6	648-0134	N/A
907	HZ7/MZ7		
908	HZ8/MZ8/LZ8		

## License/Number Plate, Front

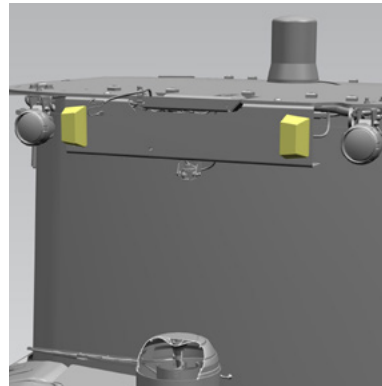
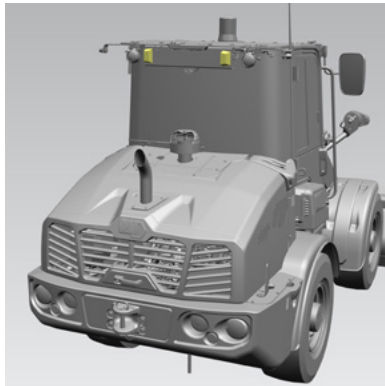
Kit will provide components to assemble a front facing license/number plate bracket mounted to the right-hand side grabrail under the roading mirrors, for use when roading in certain countries. Dealer to review local regulations to ensure it meets local requirements. Pre-drilled holes in plate allow for easy mounting of different size plates. (2x rubber grommets supplied to suit multiple grab rail diameters).



Model	Serial Number Prefix	Part Number	Estimated Install Time
906	HZ6/MZ6/LZ6	634-3143	0.5 Hours
907	HZ7/MZ7		
908	HZ8/MZ8/LZ8		

## License Plate, Rear Lights

Provides (2) halogen lamps to light area provided on the back side of the cab just below roof line. For use when rear roading number or license plate is needed.

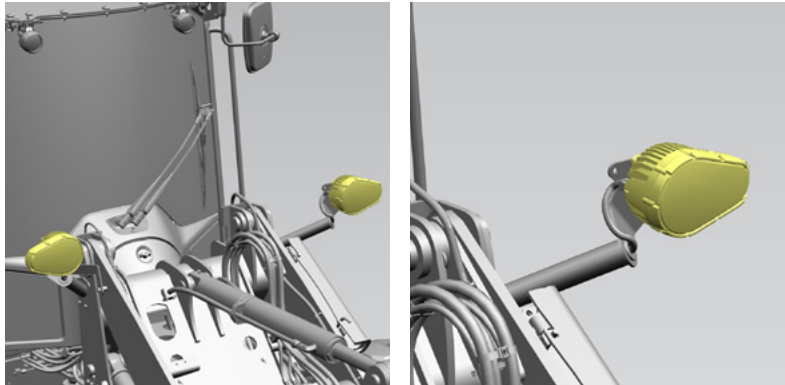


Model	Serial Number Prefix	Part Number	Estimated Install Time
906	HZ6/MZ6/LZ6	619-1558*	1.0 Hour
907	HZ7/MZ7		
908	HZ8/MZ8/LZ8		

\*Cannot be used with 572-7987 (German Roading Conversion 40 kph (25 mph)) or 573-3630 (Italian Roading Conversion 40 kph (25 mph)) as it is already fitted to machines.

## Lights, Rooding, LED (Front, Left Side)

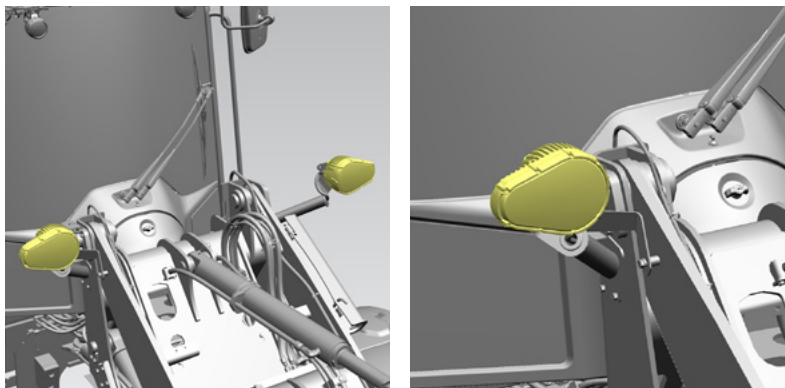
Provides an upgrade from halogen to LED front rooding lights, high/low beams with front directional signals for regions that drive on the left-hand side of the road. LED provides brighter lighting and longer life for rooding applications.



Model	Serial Number Prefix	Part Number	Estimated Install Time
906	HZ6/MZ6/LZ6	619-1094	0.5 Hour
907	HZ7/MZ7		
908	HZ8/MZ8/LZ8		

## Lights, Rooding, LED (Front, Right Side)

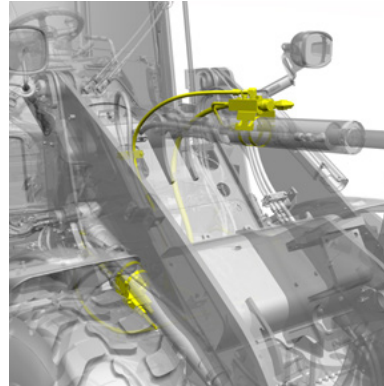
Provides an upgrade from halogen to LED front rooding lights, high/low beams with front directional signals for regions that drive on the right-hand side of the road. LED provides brighter lighting and longer life for rooding applications.



Model	Serial Number Prefix	Part Number	Estimated Install Time
906	HZ6/MZ6/LZ6	619-1548	0.5 Hour
907	HZ7/MZ7		
908	HZ8/MZ8/LZ8		

## Load Check Valves

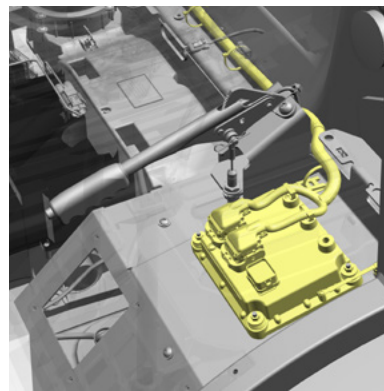
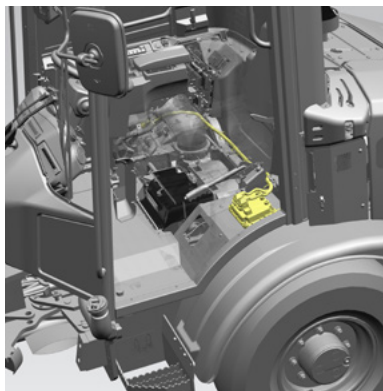
Kit will provide ability to convert from standard machine to one with lift and tilt, load check valves (LCVs) on the loader arm. Kit will not include the main implement valve but will reference the part number required to order from parts. Or one could rework existing implement valve by changing the end caps. This will involve changing several large major components and updating settings in the machine controller.



Model	Serial Number Prefix	Part Number	Estimated Install Time
906	HZ6/MZ6/LZ6	636-3877	Recommended Dealer Install
907	HZ7/MZ7		
908	HZ8/MZ8/LZ8		

## Product Link™ Elite

Provides parts need (includes wiring and PLE602 network manager) to upgrade from PL243 to Product Link™ Elite series PLE643 using cellular networks to transmit location, utilization, health, and productivity information for viewing in Product Link user applications. Provides support for remote services, remote disable and remote flash (may be dependent on corresponding machine features). Cellular technology enables more frequent transmission and larger volumes of data.



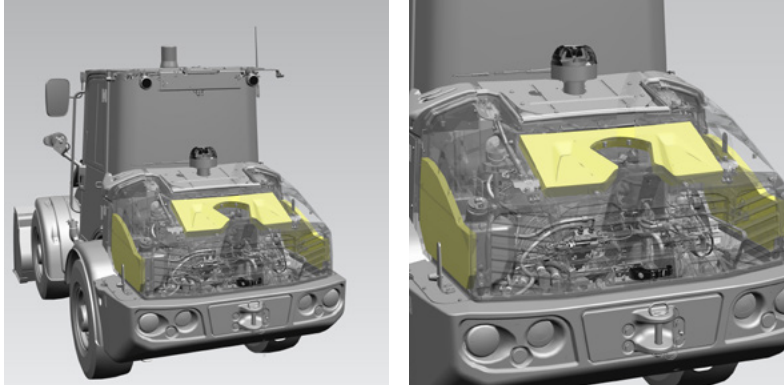
Model	Serial Number Prefix	Part Number	Estimated Install Time
906	HZ6/MZ6/LZ6	615-4884	Recommended Dealer Install
907	HZ7/MZ7		
908	HZ8/MZ8/LZ8		



## Sound Suppression, Low

Provides sound suppression foam material required to reach a lower external machine sound level. Does not include sound certificate, or sound level decals.

**NOTE:** Cannot be used with EU Prep Package machines in Europe or other regions that require sound level certification.

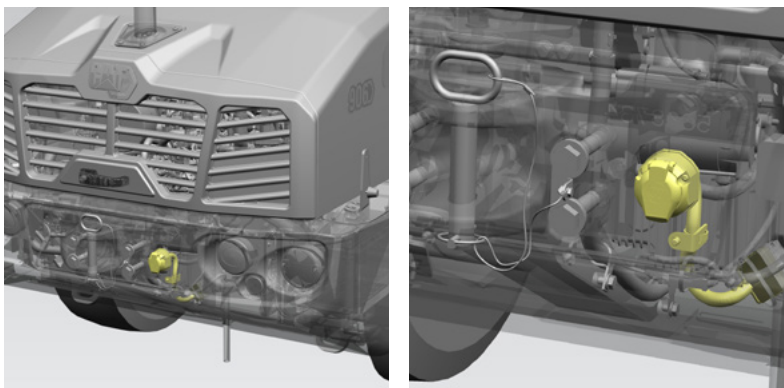


Model	Serial Number Prefix	Part Number	Estimated Install Time
906	HZ6/MZ6/LZ6	619-1573	1.0 Hour
907	HZ7/MZ7		
908	HZ8/MZ8/LZ8		

## COMFORT AND CONVENIENCE

### 13 Pin Rear Electrical

13 pin power socket and wiring harness provided to allow rear lighting bar to be added that replicates the rear light functions of the machine and integrates into the main display. Recommended if rear lights are obscured by a rear mounted attachment, i.e., salt/sand spreader.

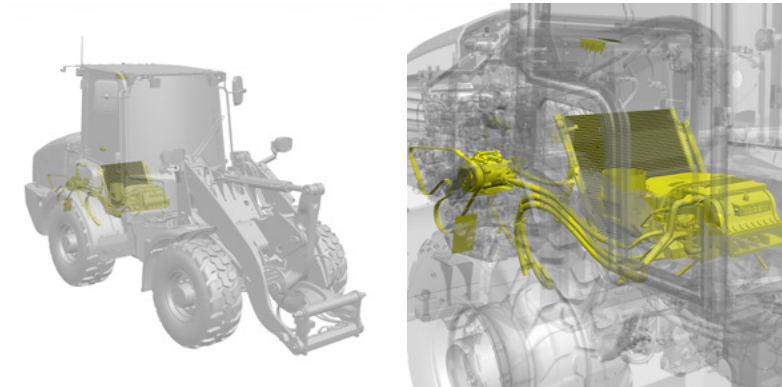


Model	Serial Number Prefix	Part Number	Estimated Install Time
906	HZ6/MZ6/LZ6	619-1551*	Recommended Dealer Install
907	HZ7/MZ7		
908	HZ8/MZ8/LZ8		

\*Requires 614-2251 (Rear Hitch).

## Air Conditioning, Upgrade from Heater

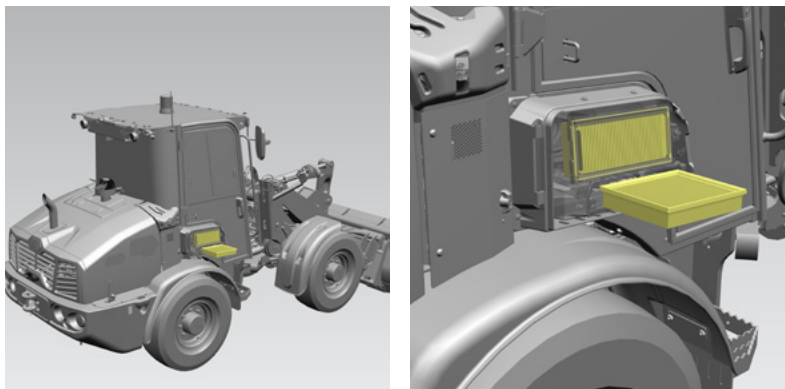
Kit will provide the ability to convert from standard heater unit to the full air conditioning with heating and cooling. This includes the addition of the engine bay components, A/C compressor, belt, condenser, conditioner unit, A/C lines and the upgraded automatic temperature control unit in the headliner of the cab.



Model	Serial Number Prefix	Part Number	Estimated Install Time
906	HZ6/MZ6/LZ6	638-4287	Recommended Dealer Install
907	HZ7/MZ7		
908	HZ8/MZ8/LZ8		

## Cab Filters, Carbon

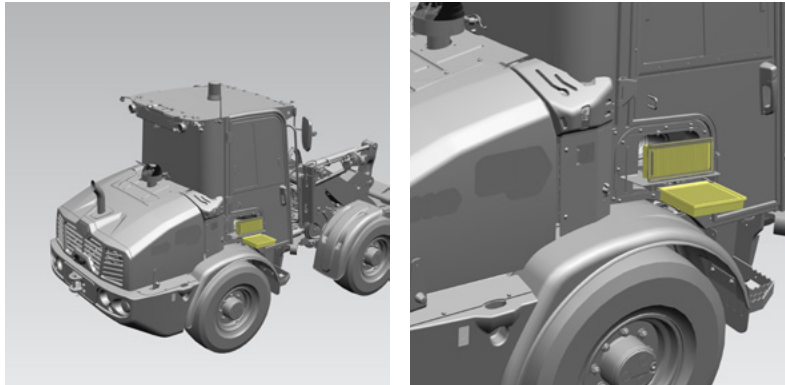
Provides replacement cab and recirculation filters with an added level of carbon filtration. The activated carbon removes everything the normal air filter does and absorbs odors and exhaust fumes.



Model	Serial Number Prefix	Part Number	Estimated Install Time
906	HZ6/MZ6/LZ6	619-1550	0.25 Hour
907	HZ7/MZ7		
908	HZ8/MZ8/LZ8		

## Cab Filters, MERV-16

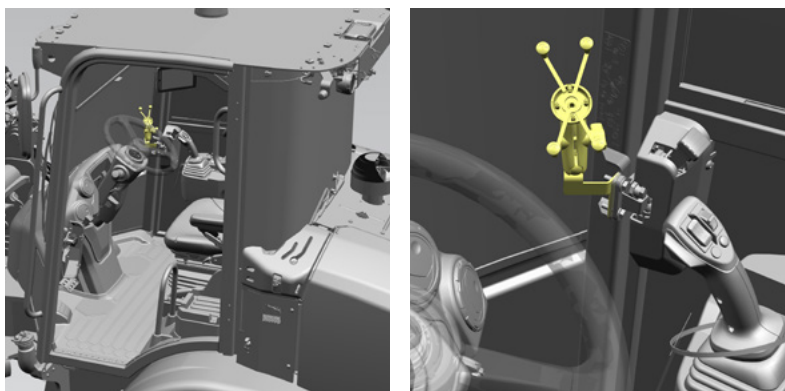
Provides replacement cab and recirculation filters with added MERV-16 level of filtration. The MERV-16 filter will filter smaller particles and to a high level, for cleaner air in the operating station.



Model	Serial Number Prefix	Part Number	Estimated Install Time
906	HZ6/MZ6/LZ6	619-1549	0.25 Hour
907	HZ7/MZ7		
908	HZ8/MZ8/LZ8		

## Cellphone Holder

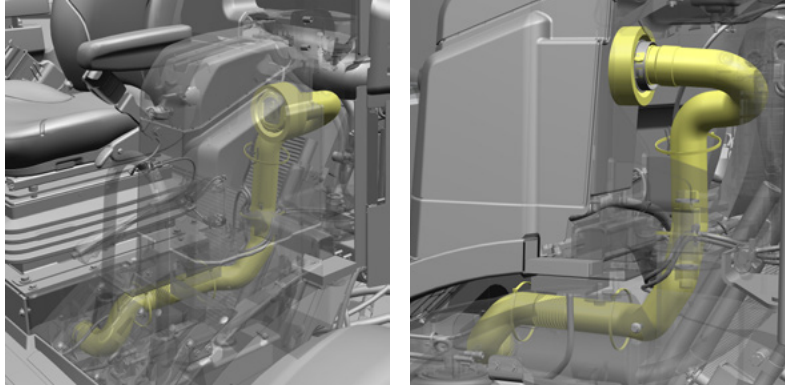
Provides spring-loaded phone holder that features an “X” design that expands and contracts to provide a perfect fit for your device even with a case. Easy to see mounting location with a wide range of adjustability to achieve the ideal viewing angle. Phone holder is made of powder coated, marine-grade aluminum, stainless steel components, and high-strength composite for durability. Fits phones ranging from 44.5-114.3 mm (1.75-4.5 in) in width, a maximum depth of 22.2 mm (0.875 in) and maximum weight of 0.45 kg (1 lb). Can be mounted near the right-hand side A-post on the door latch bolts, or on the right-hand side roof on the front visor mounting bolts, next to the rear-view mirror.



Model	Serial Number Prefix	Part Number	Estimated Install Time
906	HZ6/MZ6/LZ6	625-7599	0.5 Hour
907	HZ7/MZ7		
908	HZ8/MZ8/LZ8		

## Cool Box, Air Vent

Provides components to upgrade a storage box to a cooled storage box with a connected air vent to cool the air supply when automatic temperature control (ATC) air conditioning is fitted.

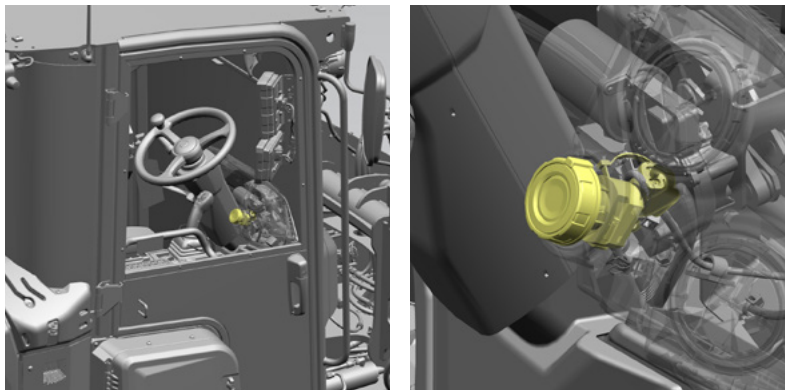


Model	Serial Number Prefix	Part Number	Estimated Install Time
906	HZ6/MZ6/LZ6	619-1561*	2.0 Hours
907	HZ7/MZ7		
908	HZ8/MZ8/LZ8		

\*Requires: 573-3923 or 587-6908 (Air conditioning, ATC).

## Push to Start

Provides consist of parts required to convert a key start system to a push to start system.

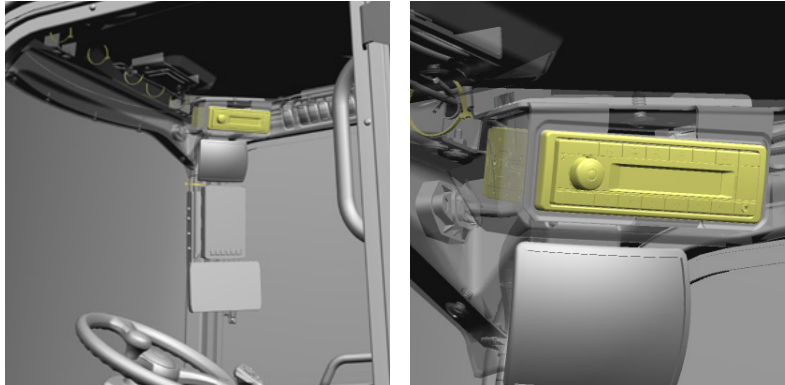


Model	Serial Number Prefix	Part Number	Estimated Install Time
906	HZ6/MZ6/LZ6	619-1568	Recommended Dealer Install
907	HZ7/MZ7		
908	HZ8/MZ8/LZ8		

## Radio

Provides a standard 12V AM/FM/DAB+ radio with Bluetooth® technology, USB port, and 3.5 mm (0.1 in) AUX input. Includes microphone, hands free telephone calling, auxiliary inputs for connecting MP3 players. Availability varies by country. Aerial/ antenna sticks to front windscreen.

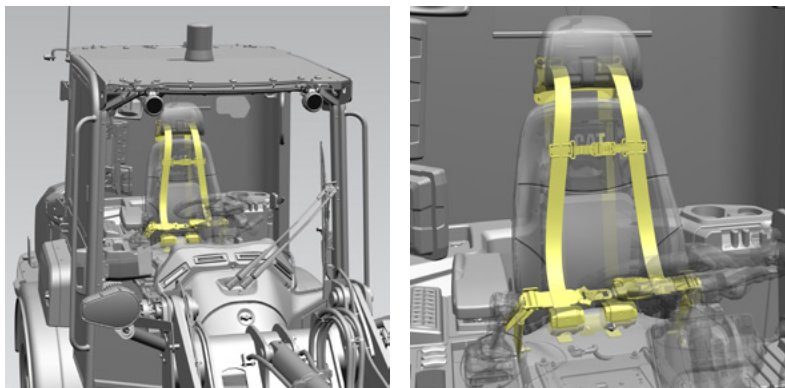
**NOTE:** All enclosed cab machines have built-in mounting, wiring and speakers.



Model	Serial Number Prefix	Part Number	Estimated Install Time
906	HZ6/MZ6/LZ6	619-1546	1.0 Hour
907	HZ7/MZ7		
908	HZ8/MZ8/LZ8		

## Seatbelt, High Visibility with 4-Point

Provides high visibility orange, 4-point, 76 mm (3 in) wide seat belt with indicator that warns operator when machine is running, and belt is not buckled. Linked to an audible alarm icon on display and wiring to dedicated beacon socket on roof, that is powered only when seat belt is buckled. Recommended for customers running in harsh applications such as quarry, mine, and forestry sites.

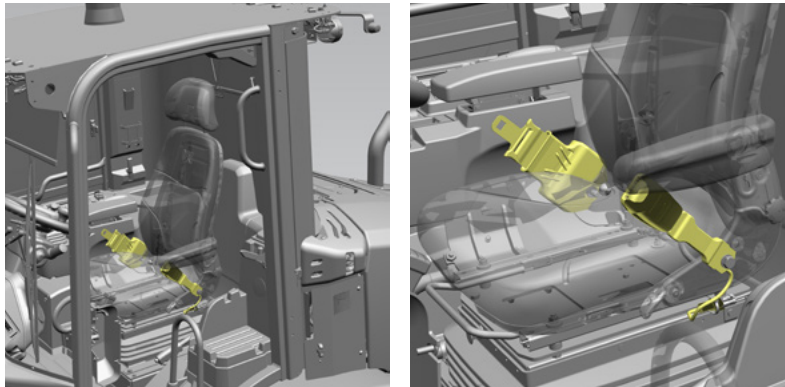


Model	Serial Number Prefix	Part Number	Estimated Install Time
906	HZ6/MZ6/LZ6	619-1565*	1.5 Hour
907	HZ7/MZ7		
908	HZ8/MZ8/LZ8		

\*Only for use with 573-4007 (Premium Seat).

## Seatbelt, High Visibility with Indicator

Provides high visibility orange, 76 mm (3 in) wide seat belt with indicator that warns operator when machine is running, and belt is not buckled. Linked to an audible alarm icon on display and wiring to dedicated beacon socket on roof, that is powered only when seat belt is buckled. Recommended for customers running extended hours for enhanced comfort. For use with any seat.

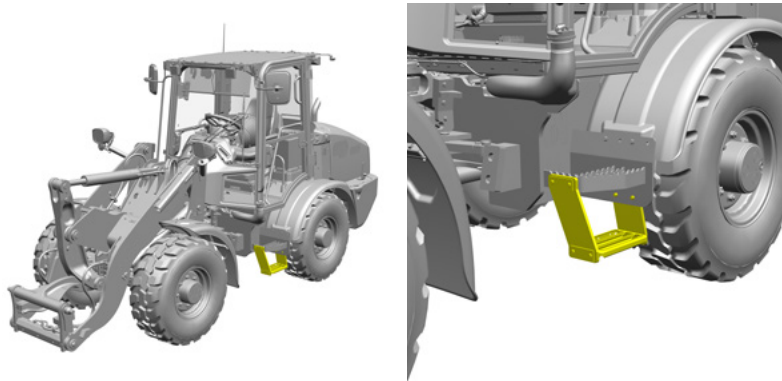


Model	Serial Number Prefix	Part Number	Estimated Install Time
906	HZ6/MZ6/LZ6	619-1562	0.5 Hour
907	HZ7/MZ7		
908	HZ8/MZ8/LZ8		

## Step, Extra (Left Side)

Kit provides the ability to add an extra step to the 906 or 907 machines on the main entry/exit side of the machine. Recommended if larger static rolling radius tires are used or if operator requires bottom step to be in a lower position to aid ergonomic entry.

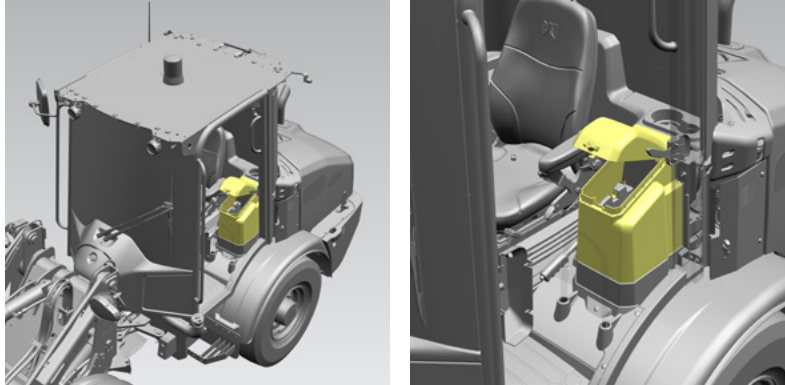
**NOTE:** 908 has this step as standard.



Model	Serial Number Prefix	Part Number	Estimated Install Time
906	HZ6/MZ6/LZ6	635-0335	0.5 Hour
907	HZ7/MZ7		
908	HZ8/MZ8/LZ8		

## Storage Box, Cab

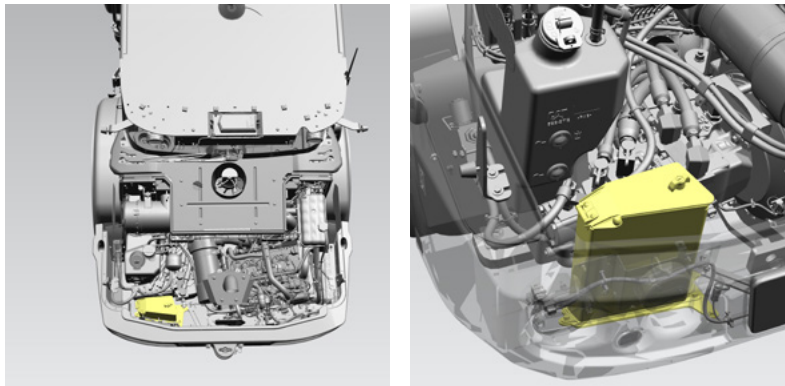
Storage box with lockable lid on left hand side of operator next to hand brake lever. Sized to store items including large drink bottles, safety vest, hard hats, paperwork, clipboard etc.



Model	Serial Number Prefix	Part Number	Estimated Install Time
906	HZ6/MZ6/LZ6	619-1559	1.5 Hour
907	HZ7/MZ7		
908	HZ8/MZ8/LZ8		

## Toolbox, Engine Bay

Kit provides a fabricated, heavy-duty toolbox suitable for storing chains, grease guns, etc. Mounted inside the engine bay with a lockable lid.

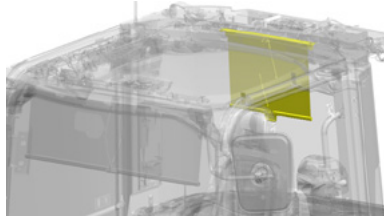


Model	Serial Number Prefix	Part Number	Estimated Install Time
906	HZ6/MZ6/LZ6	614-8198*	1.0 Hour
907	HZ7/MZ7		
908	HZ8/MZ8/LZ8		

\*Cannot be used with 615-4885 (120V Cold Weather Starting Aid) or 615-4887 (240V Cold Weather Starting Aid).

## Visor, Rear Perforated Rear

Provides replacement rear visor with perforated material that is preferred by operators. For use with enclosed cabs only. Also, offered as an option in the factory.



Model	Serial Number Prefix	Part Number	Estimated Install Time
906	HZ6/MZ6/LZ6	573-8401	0.25 Hour
907	HZ7/MZ7		
908	HZ8/MZ8/LZ8		

## SECURITY

### Bluetooth Key (spare)

Extra Bluetooth "Cat" key is available if required. For use with the Bluetooth module.

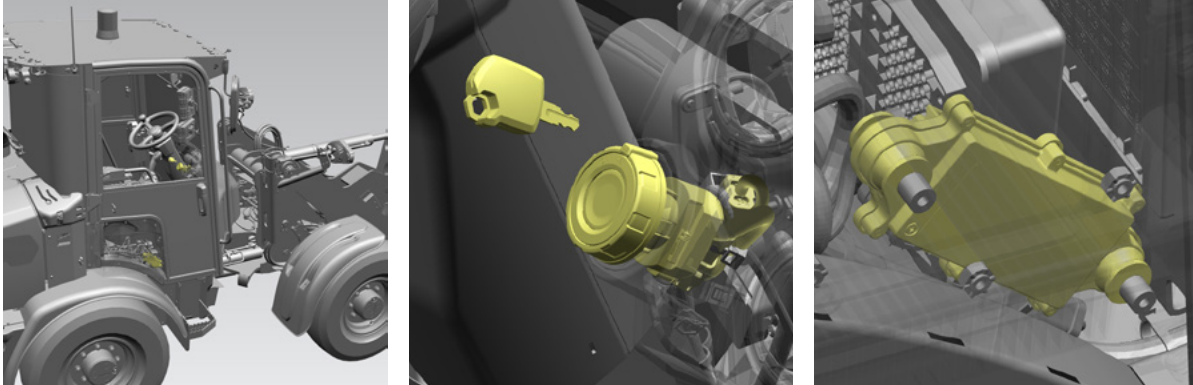


Model	Serial Number Prefix	Part Number	Estimated Install Time
906	HZ6/MZ6/LZ6	487-3004	N/A
907	HZ7/MZ7		
908	HZ8/MZ8/LZ8		



## Bluetooth Security

Provides parts required to convert a key system to a push to start system, including a Bluetooth receiver and two (2) Bluetooth keys, that can be paired to the machine to reduce the need to press the security code into the display.

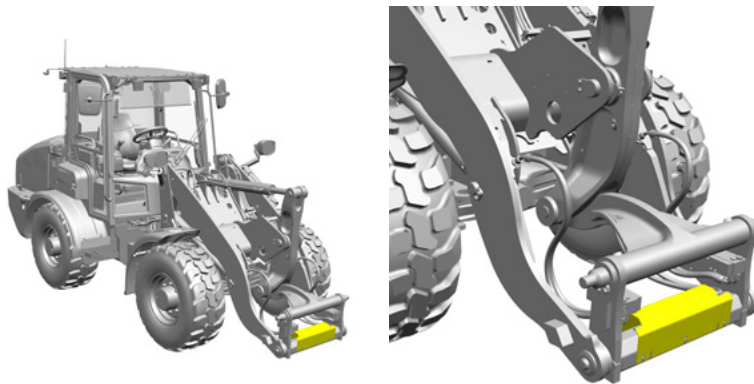


Model	Serial Number Prefix	Part Number	Estimated Install Time
906	HZ6/MZ6/LZ6	619-1566	Recommended Dealer Install
907	HZ7/MZ7		
908	HZ8/MZ8/LZ8		

## GUARDING

### Coupler Guard, Horizontal

Kit provides guard/cover for the horizontal pin lock couplers, HPL-V and HPL-A. It covers/protects the hoses to the lower retractable coupler pin cylinder. Recommended for waste and high debris applications.



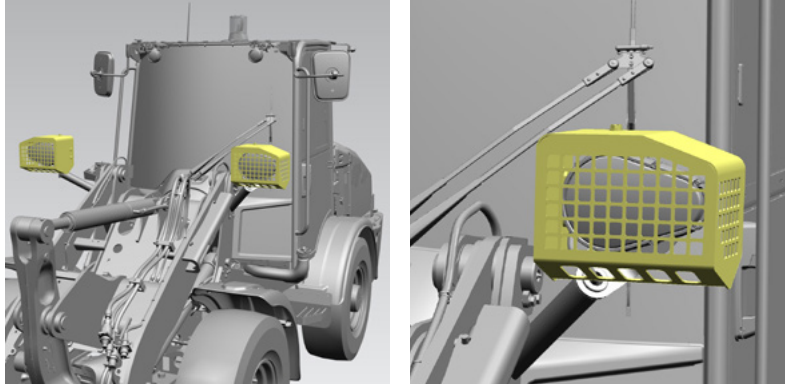
Model	Serial Number Prefix	Part Number	Estimated Install Time
906	HZ6/MZ6/LZ6	635-0544*	0.5 Hour
907	HZ7/MZ7		
908	HZ8/MZ8/LZ8		

\*This guard will restrict the view to the fork tips.

## Light Guards, Front

Provides two (2) mesh front light guards that mount over the main roading lights. Ideal for protecting the top, front and sides of the lights in multiple applications, including waste, recycling, and agriculture. Fitted using pre-drilled threaded holes in the counterweight.

**NOTE:** Not homologated.



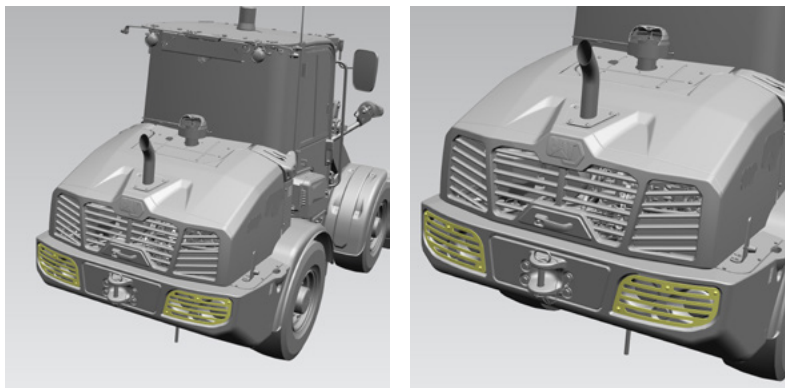
Model	Serial Number Prefix	Part Number	Estimated Install Time
906	HZ6/MZ6/LZ6	614-2266*	1.0 Hour
907	HZ7/MZ7		
908	HZ8/MZ8/LZ8		

\*Cannot be used with machine used on the road. Contact your Cat dealer for further information.

## Light Guards, Rear

Provides two (2) mesh rear light guards that mount over the taillights. Ideal for protecting the rear lights in multiple applications, including waste, recycling, and agriculture. Fitted using pre-drilled threaded holes in the counterweight.

**NOTE:** Not homologated.



Model	Serial Number Prefix	Part Number	Estimated Install Time
906	HZ6/MZ6/LZ6	614-2252*	0.5 Hour
907	HZ7/MZ7		
908	HZ8/MZ8/LZ8		

\*Cannot be used with machine used on the road. Contact your Cat dealer for further information.

