

CATERPILLAR AND AGG-PRO

HELP QUARRYING AND RECYCLING
OPERATIONS CRUSH GOALS

AGG-PRO

CUSTOMER:

Aggregate Processing and
Recycling Limited (Agg-Pro)

PRODUCT:

Crushing and Screening Equipment

LOCATION:

Tamworth, UK

SCOPE OF ENGINE USE:

Cat® C4.4 IPU EU Stage V,
188 hp Diesel Industrial Engine

CAT® DEALER:

Finning UK & Ireland

FEATURED TOPICS:

Cat Connectivity

Agg-Pro is one of the United Kingdom's largest suppliers of crushing, screening, washing and recycling equipment. Since 1996, Agg-Pro has provided superior crushers, screeners, stackers, shredders and other recycling solutions for the quarrying and recycling industries. With decades of experience and a customer-focused approach, Agg-Pro finds businesses the most efficient machines for their aggregate processing and recycling operations.

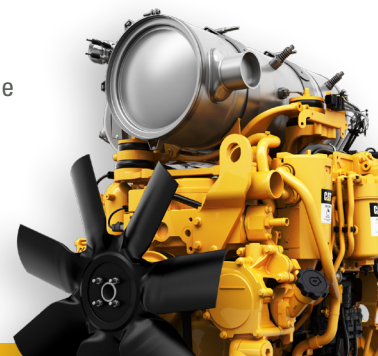
DATA IS A POWERFUL TOOL FOR EFFICIENT RECYCLING

To power heavy-duty equipment, Agg-Pro counts on Caterpillar engines. Agg-Pro crushing and screening equipment varies in power requirements, so the company uses a range of engines from the [Cat® C4.4 Industrial Diesel Engine](#) to the [Cat C18](#). Power and customisation are important engine features, and Cat Connectivity does even more to help Agg-Pro set up its customers for success. The [Cat Remote Fleet Vision](#) feature is utilised on all engines that pass through the Agg-Pro workshop in Tamworth, UK. Remote Fleet Vision helps businesses monitor engine performance, run hours and load factors. Because that data is delivered in real time, Agg-Pro doesn't have to dispatch engineers to jobsites to collect data or estimate important data points. Cat Remote Fleet Vision takes the guesswork out of preventative maintenance.

"In quarrying and recycling, it's so important to minimise downtime," says Agg-Pro Operations Manager, Phil Swinnerton. "Having Cat Connectivity gives us another angle to help keep our customers productive."

A CONVENIENT LINK TO EFFICIENCY

Cat Product Link™ Hardware delivers valuable insight across a Cat engine-powered fleet. Agg-Pro uses the PL542 to gather hours, location, fuel, fault codes and more for machines like the [GIPO P 131 Crusher](#). Swinnerton says Product Link installation doesn't set them back: "It only takes five-to-ten minutes. The device plugs in directly to the service port of the engine."



POWER PROFILE: HELP QUARRYING AND RECYCLING OPERATIONS CRUSH GOALS

WARNING SIGNS HELP OPERATIONS AVOID ENGINE FAILURE

Cat Connectivity provides early identification of various fault codes that might arise in a machine. Notifications are sent to operators via email, text or push notification, with a warning of low severity, medium severity or high severity. "The accuracy of Cat Connectivity notifications tells operators exactly what's going on with a machine," says Tony Gadsby, Agg-Pro Service Manager. "We get a fault code to the part in question, and that allows us to get the right replacement parts to the right places at the right time."

"Customers are kind of amazed that we know something's wrong with their machine before they even realise it," says Swinnerton. "We're able to immediately send an Agg-Pro engineer or, in some cases, a Cat trained engineer to fix the issue."

A RELIABLE PARTNER WITH REGIONAL EXPERIENCE

Agg-Pro's Cat Dealer, [Finning UK & Ireland](#), has a wide range of locations and a wealth of experience in the region. "Our relationship with Finning is great," says Gadsby. "If we need them, they can be on-site same day or next day, at worst. Our customers have machines all over the country, some of them in remote places, but Finning is always able to get an engineer to their site, on time."

Avoiding machine and equipment failures is the purpose of Cat Connectivity. The remote diagnostics monitor engines around the clock and recommend needed repairs. With the help of this innovative tool, Agg-Pro and Finning will continue to work together to create proactive solutions for quarrying and recycling operations.

"Having Cat[®] Connectivity gives us another angle to help keep our customers productive."

