

140 GC

MOTOR GRADER



Engine Power	131 kW-147 kW (176 hp-196 hp)
Operating Weight	18,280 kg (40,301 lb)

Cat® 140 GC meets U.S. EPA Tier 4 Final, EU Stage V, and China Nonroad Stage IV emission standards.



THE CAT[®] 140 GC

GO THE DISTANCE

The **Cat 140 GC** Motor Grader combines performance with cost-efficient owning and operating. Servicing the machine is easy with grouped filter locations. Comfort options, including a heating/cooling system or air suspension seat, keep you productive throughout the day.



GRADING THE ROAD AHEAD

The Cat 140 GC Motor Grader gets you to the ideal grade with simple-to-operate, quick, and accurate hydraulic controls.

- + GET THE PERFORMANCE YOU NEED IN THE CAT C7.1 ENGINE AND ALL-WHEEL DRIVE (AWD) OPTION
- + CAB OPTIONS FOR IDEAL COMFORT
- + EASILY MAINTAIN AND SERVICE

LOW COST-PER-HOUR OPERATION

Extended maintenance cycles, demand fan, and optional reversing fan keep your overall costs down.

CAB DESIGNED FOR COMFORT

Boost productivity and efficiency with cab comfort options.

RELIABLE PERFORMANCE

Get precise, consistent blade movement with the Cat C7.1 engine and controls, along with added traction with the AWD option.

TECHNOLOGIES FOR PRODUCTIVITY

Get the grade sooner with optional attachments and technologies utilizing attachment ready option (ARO).

WORK MORE... FUEL LESS

Get up to 5% fuel savings using Eco mode



SCENARIO:

COMPARED TO NOT USING ECO MODE



TAKE THE GUESSWORK OUT OF MANAGING YOUR EQUIPMENT CAT TECHNOLOGY

Cat Link telematics technology helps take the complexity out of managing your job sites by gathering data generated by your equipment, materials, and people and serving it up to you in customizable formats.



CAT APP

The Cat App helps you manage your assets – at any time – right from your smartphone. You can see your fleet location, hours, and other information you need to see. You will get critical alerts for required maintenance, and you can even request service from your local Cat dealer.

PRODUCT LINK™

Product Link™ collects data automatically and accurately from your assets – any type and any brand. Information such as location, hours, fuel usage, productivity, idle time, maintenance alerts, diagnostic codes, and machine health can be viewed online through web and mobile applications.

VISIONLINK®

Access information anytime, anywhere with VisionLink® – and use it to make informed decisions that boost productivity, lower costs, simplify maintenance, and improve safety and security on your job site. With different plan level options, your Cat dealer can help you configure exactly what you need to connect your fleet and manage your business without paying for extras you don't want. Plans are available with cellular or satellite reporting or both. May not be available in all regions.

QUICK SERVICE

EASY MAINTENANCE



REVERSING FAN

Spend less time cleaning the cooling system with the reversing fan option, which reduces costs when cleaned once per week for more uptime.

LONG SERVICE INTERVALS

Reduce your operating expenses and spend more time working with extended filter change cycles.

GROUPED LOCATION

Service your machine faster with easy access filters in a central location so you can do preventative maintenance quickly and move on to the next job.

ADJUSTABLE SUPPORT

Enter the cab easily and pull the control console into place. Lumbar support in the air suspension seat option helps to improve posture and reduce fatigue.

VENTILATION

The heating and cooling system option helps you stay comfortable throughout the day.

DIGITAL BLADE SLOPE METER

Reduce the need for manual grade checking to keep you and your work site safer with the digital blade slope meter option, which integrates directly onto your information display screen.

ADJUSTABLE OPTIONS

COMFORT WHERE IT COUNTS





CONVENIENT SETTINGS

View machine and diagnostic information plus gear indication in front of you on the dash display.



EXTRAORDINARY VISIBILITY

Side and rearview mirrors give you a broad view of the job site. The rearview camera option provides a wide view behind the machine for better visibility.



PRECISE CONTROLS

Become one with your machine using fast, accurate hydraulic controls to power through the job. The powershift transmission changes on the go to minimize shifting gear. All-wheel drive (AWD) gives you more traction to handle rough terrain.



EASY ON AND OFF

Work safely using three points of contact when entering and exiting the machine with strategically placed walkways and grab rails.

SEE YOUR INVESTMENT GO FURTHER DESIGNED TO LAST

MAXIMIZE COMPONENT LIFE

Reduce daily greasing requirements and repairs to your circle and pinion with the circle saver option. The grease fitting is easy to access and maintain.

REDUCE DAMAGE

Keep your machine running smoothly in demanding applications with guarding. The standard transmission guard defends against damage from underneath the machine.

PRESERVE YOUR MACHINE

The circle drive slip clutch option protects your pinion drive and circle teeth from damage.





MOVE MORE
WITH CAT ATTACHMENTS



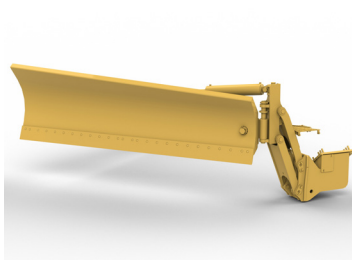
MID MOUNT SCARIFIER



RIPPER



FRONT BLADE



SNOW WING

ENHANCE YOUR PRODUCTIVITY

From a ripper to front blade, expand the versatility of your machine by utilizing a variety of Cat attachments. Each one is designed to fit your needs for improved performance, safety, and stability.

TECHNICAL SPECIFICATIONS

See cat.com for complete specifications.

POWERTRAIN		
Engine Model	Cat® C7.1	
	Meets U.S. EPA Tier 4 Final, EU Stage V and China Nonroad Stage IV emission standards.	
Net Power* ISO 9249, SAE J1349, 80/1269/EEC	147 kW	196 hp
Engine Power AWD	147 kW	196 hp
Bore	105 mm	4.1 in
Displacement	7.01 L	427.8 in³
Stroke	135 mm	5.3 in
Engine RPM	2,200 rpm	
Maximum Torque – ISO 9249	835 N•m	616 lbf-ft
Top Forward Speed	41.7 km/h	25.9 mph
Top Reverse Speed	24.0 km/h	14.9 mph
Turning Radius, Outside Front Tires	7.8 m	25.6 ft
*Net power available at the flywheel when the engine is equipped with fan, air cleaner, aftertreatment, and alternator with engine speed at 2,200 rpm.		
<ul style="list-style-type: none"> • Engine power is tested per ISO 9249, SAE J1349, and EEC 80/1269 standards in effect at the time of manufacture. • The air conditioning system on this machine contains the fluorinated greenhouse gas refrigerant R134a (Global Warming Potential = 1430). The system contains 2.0 kg of refrigerant which has a CO₂ equivalent of 2.86 metric tonnes. 		
WEIGHT		
Typically Equipped Machine Weight*		
Weight (Stage V)*	17 565 kg	38,725 lb
Weight (Tier 4 Final)**	18 280 kg	40,301 lb
AWD (Stage V)*	18 305 kg	40,356 lb
AWD (Tier 4 Final)**	19 020 kg	41,932 lb
<ul style="list-style-type: none"> • Typically equipped operating weight is calculated with full fuel tank, coolant, lubricants, operator, push block, rear ripper, tires on multi-piece rims (*17.5-25 Bias/**17.5R-25), and other equipment. 		
SERVICE REFILL CAPACITIES		
Fuel Tank	295 L	77.9 gal
Diesel Exhaust Fluid (DEF)	16 L	4.2 gal
Circle Drive without Slip Clutch	2 L	0.5 gal
Circle Drive with Slip Clutch	7.5 L	2.0 gal
Engine Crankcase	21 L	5.5 gal
Cooling System	40 L	10.6 gal
Hydraulic System	45 L	11.9 gal
Transmission	18 L	4.8 gal
Differential Group	33 L	8.7 gal

BLADE RANGE			
Circle Center Shift			
Right	728 mm	28.7 in	
Left	752 mm	29.6 in	
Moldboard Side Shift			
Right	526 mm	20.7 in	
Left	649 mm	25.6 in	
Blade Tip Range			
Forward	40°		
Backward	5°		
Maximum Shoulder Reach			
Right	1812 mm	71.3 in	
Left	1886 mm	74.3 in	
Maximum Lift Above Ground	475 mm	18.7 in	
Maximum Depth of Cut	715 mm	28.1 in	
MOLDBOARD			
Width	3.7 m	12 ft	
Height	610 mm	24 in	
End Bit	152 mm	6 in	
Cutting Edge	152 mm	6 in	
Arc Radius	417 mm	16.4 in	
Throat Clearance	112 mm	4.7 in	
DIMENSIONS			
Length of Machine*	10 332 mm	406.7 in	
Maximum Height	3798 mm	149.5 in	
Width	2493 mm	98.1 in	
Width (AWD)	2638 mm	103.9 in	
*Typically equipped with push block and ripper.			
NET POWER			
Gear	VHP		AWD
Forward			
1st	131 kW	176 hp	147 kW 196 hp
2nd	139 kW	186 hp	147 kW 196 hp
3rd – 6th	147 kW	196 hp	147 kW 196 hp
Reverse			
1st	131 kW	176 hp	147 kW 196 hp
2nd	139 kW	186 hp	147 kW 196 hp
3rd	147 kW	196 hp	147 kW 196 hp
<ul style="list-style-type: none"> • Power as declared per ISO 14396:2002 • Engine power is rated at 150 kW (201 hp) at 2,200 rpm. 			

STANDARD & OPTIONAL EQUIPMENT

Standard and optional equipment may vary. Consult your Cat® dealer for details. Not all options available in all regions.

POWERTRAIN	STANDARD	OPTIONAL
Cat C7.1 Engine	•	
Eco Mode	•	
50°C (122°F) Ambient Capacity	•	
Engine Idle Shutdown Timer	•	
No-Spin Differential	•	
Digital Blade Slope Meter		•
Demand Fan	•	
Reversing Fan		•
All-Wheel Drive (AWD)		•
CAB	STANDARD	OPTIONAL
Rollover Protective Structure/Falling Objects Protective Structure (ROPS/FOPS)	•	
Static Seat	•	
Mechanical Suspension Seat		•
Air Suspension Adjustable Seat		•
Information Display	•	
Four-Point Safety Harness Seat Belt		•
Adjustable Control Console	•	
Cell Phone Holder	•	
Entertainment Radio Ready		•
Halogen Lights		•
Product Link™	•	
DRAWBAR CIRCLE MOLDBOARD	STANDARD	OPTIONAL
Standard Drawbar Circle Moldboard	•	
Circle Drive Slip Clutch		•
Circle Saver		•

SAFETY AND SECURITY	STANDARD	OPTIONAL
Rearview Mirror	•	
Side-View Mirror	•	
Signaling/Warning Horn	•	
Parking Brake	•	
Secondary Steering System		•
Rearview Camera		•
Front-View Camera		•
Hydraulic Brakes	•	
Integrated Work Port Pressure Relief	•	
Integrated Dead Engine Implement Lower	•	
Rear Fenders		•
SERVICE AND MAINTENANCE	STANDARD	OPTIONAL
Grouped Location for Engine Oil and Fuel Filters	•	
Extended Life Coolant	•	
Sy-Klone Precleaner		•
ATTACHMENTS	STANDARD	OPTIONAL
Push Block		•
Moldboard – 4267.2 mm (14 ft)	•	
Moldboard – 3657.6 mm (12 ft)		•
Ripper/Scarifier		•
Mid Mount Scarifier		•
Front Blade		•
Factory Front Lift Group		•
Attachment Ready Option (ARO)		•

For more complete information on Cat products, dealer services and industry solutions, visit us on the web at www.cat.com.

© 2024 Caterpillar. All Rights Reserved.

VisionLink is a trademark of Caterpillar Inc., registered in the United States and in other countries.

Materials and specifications are subject to change without notice. Featured machines in photos may include additional equipment. See your Cat dealer for available options.

CAT, CATERPILLAR, LET'S DO THE WORK, their respective logos, Product Link, "Caterpillar Corporate Yellow," the "Power Edge" and Cat "Modern Hex" trade dress as well as corporate and product identity used herein, are trademarks of Caterpillar and may not be used without permission.
www.cat.com www.caterpillar.com

AEXQ3872-00 (07-2024)
Build Number 02A
(N Am, Europe, Chile,
China, Colombia, Turkey)

