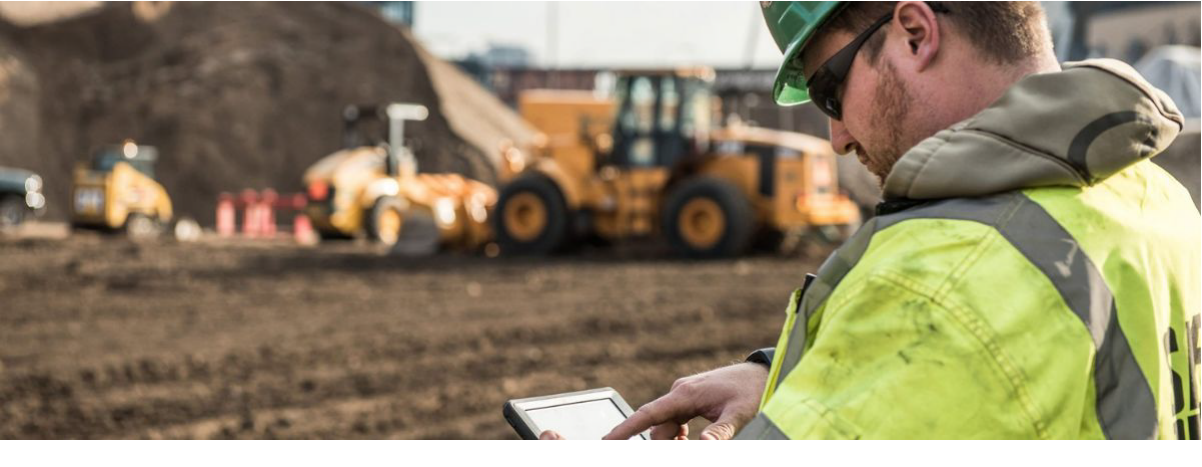




# ECOMMERCE NEWS



## 3 UPGRADES FOR SEAMLESS ONLINE PARTS SHOPPING

Making Your Parts Buying Experience Even Easier

### 1. Add Equipment

Use the upgraded Add Equipment tool for quicker and seamless access to maintain and repair your equipment. Simply add 1 or 10 serial numbers or model numbers to get started.

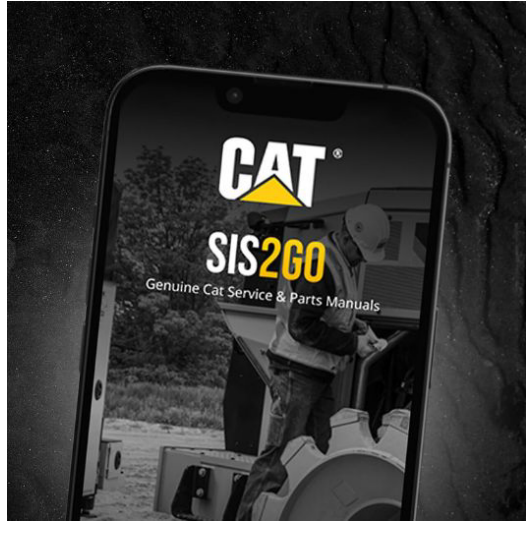
### 2. See More Parts That Fit

Your days scrolling are over. Browse all the parts built to fit, repair and maintenance kits, top-selling parts, tools and more all in one convenient place.

### 3. Expanded Resources

Looking for help on what to order? With the newly added My Equipment resources there's no more guessing when it comes to maintenance and repairs. From quick access to SIS, maintenance, and repair kits, warranty registration and more.

[SHOP PARTS.CAT.COM](https://shop.parts.cat.com)



## THE PERFECT PARTNERSHIP

The Cat® Service Information System 2.0 (SIS) is designed to help you with every stage of repair and maintenance, and includes Cat products from as far back as 1977 to today. You can quickly identify the right parts for your equipment, add them to a cart, then seamlessly transfer that cart to your parts.cat.com account cart when you're ready to check out. And with the new SIS2GO app, you can do it all from the palm of your hand.

[LEARN MORE](#)

**"[The SIS2.0 & Parts.cat.com Integration] makes sure I am getting the right part that fits my machine, without any doubts."**

– Caterpillar customer



## SUSTAINABLE CHOICES WITH CAT® REMAN

Cat® Reman doesn't just offer affordable repair options for your equipment - it continues Cat history of sustainable initiatives. Cat Reman parts are made with 65-87% less energy and greenhouse gas emissions and use 80-90% less raw materials. They're also 45-85% of the cost of new parts with core return, while providing confidence through Caterpillar's 12-month parts warranty.\*

## WHAT IS CAT REMAN?

Cat Reman isn't just rebuilding or refurbishing; it's a state of the art, top to bottom process that results in a sustainably made like-new component. When an engine reaches the end of its lifecycle, Cat Reman completely disassembles the engine, down to its block and the smallest parts. Every one of those parts is meticulously cleaned and inspected before being reassembled into a like-new engine. That engine can then bring new life to a piece of your equipment, keeping scrap metal and other waste out of the landfill while keeping your equipment running longer.



\*It is recommended to replace before failure. Replacements after failure may result in partial credit.

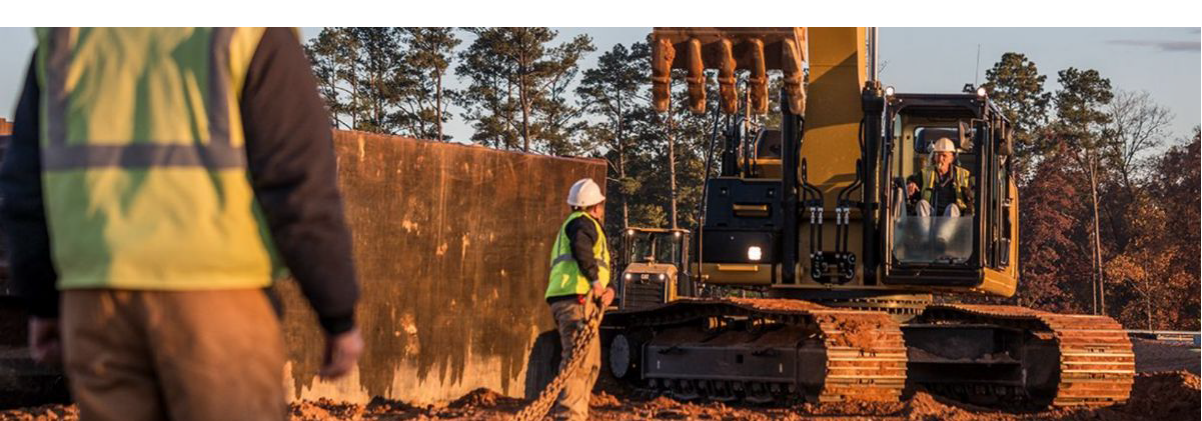


## 50 YEARS OF SUSTAINABILITY

The circular economy Cat Reman provides allows us to manage the supply chain, reduce waste, and offer cost-effective price points for our customers. Join us as we celebrate 50 years of sustainability with Cat Reman. From complete engines to electronics, over 8,000 Cat Reman parts are available. Find the one you need at parts.cat.com or contact your local dealer.

[LEARN MORE](#)

\*Cat Reman sustainability statements represent U.S. environmental impacts comparing "gate-to-gate" remanufacturing and manufacturing processes for engines and components. Based on 2018 external study of Cat engines, alternators and turbochargers. Does not include impacts elsewhere in our value chain. Cat Reman cost savings statements are based on return of core; core conditions apply. Warranty can vary by model and application; limitations may apply. For complete details about the applicable Caterpillar Limited Warranty, contact an authorized Cat dealer.



### Stay in the Know

Get this email from a friend? Sign up to keep them coming and never miss an update.

[SUBSCRIBE NOW](#)



#LetsDoTheWork