



318 GC

Hydraulic Excavator

Technical Specifications

Configurations and features may vary by region. Please consult your Cat® dealer for availability in your area.

Table of Contents

Specifications	2
Engine	2
Swing Mechanism	2
Weights	2
Track	2
Drive	2
Hydraulic System	2
Service Refill Capacities	3
Standards	3
Sound Performance	3
Operating Weights and Ground Pressures	4
Major Component Weights	5
Dimensions	6
Working Ranges and Forces	7
Reach Boom Lift Capacities	8
HD Reach Boom Lift Capacities	9
Bucket Specifications and Compatibility	11
Attachments Offering Guide	12
Standard and Optional Equipment	13
Dealer Installed Kits and Attachments	14
318 GC Environmental Declaration	15

318 GC Hydraulic Excavator Specifications

Engine

Engine Model	Cat® C3.6	
Net Power		
ISO 9249	83.1 kW	111 hp
ISO 9249 (DIN)	113 hp (metric)	
Engine Power		
ISO 14396	90 kW	121 hp
ISO 14396 (DIN)	122 hp (metric)	
Bore	98 mm	4 in
Stroke	120 mm	5 in
Displacement	3.6 L	220 in ³
Biodiesel Capability	Up to B20 ⁽¹⁾	

- Meets Brazil MAR-1 emission standards, equivalent to U.S. EPA Tier 3 and EU Stage IIIA.
- Advertised power is tested per the specified standard in effect at the time of manufacture.
- Net power advertised is the power available at the flywheel when the engine is equipped with fan, air intake system, exhaust system and alternator.
- Engine speed at 2,400 rpm.
- No engine power derating required below 3000 m (9,840 ft) altitude.

⁽¹⁾Cat engines are compatible with diesel fuel blended with the following lower-carbon intensity fuels** up to:

- ✓ 100% biodiesel FAME (fatty acid methyl ester)*
- ✓ 100% renewable diesel, HVO (hydrotreated vegetable oil) and GTL (gas-to-liquid) fuels

Refer to guidelines for successful application. Please consult your Cat dealer or “Caterpillar Machine Fluids Recommendations” (SEBU6250) for details.

*For use of blends higher than 20% biodiesel, consult your Cat dealer.

**Tailpipe greenhouse gas emissions from lower-carbon intensity fuels are essentially the same as traditional fuels.

Swing Mechanism

Swing Speed	9.56 rpm	
Maximum Swing Torque	46 kN·m	33,840 lbf·ft

Weights

Operating Weight	17 500 kg	38,600 lb
------------------	-----------	-----------

- Long undercarriage, Reach boom, R2.6 (8'6") stick, Severe Duty (SD) 0.91 m³ (1.19 yd³) bucket, 700 mm (24") triple grouser shoes and 3250 kg (7,170 lb) counterweight.

Track

Track Shoes Width	600 mm	24 in
Track Shoes Width	700 mm	28 in
Number of Shoes (each side)	44	
Number of Track Rollers (each side)	7	
Number of Carrier Rollers (each side)	2	

Drive

Gradeability	35°/70%	
Maximum Travel Speed	5.4 km/h	3.4 mph
Maximum Drawbar Pull	157 kN	35,295 lbf

Hydraulic System

Main System – Maximum Flow – Implement	296 L/min	78 gal/min
Swing System – Maximum Flow	148 kPa	39 psi
Maximum Pressure – Equipment – Implement	35 000 kPa	5,076 psi
Maximum Pressure – Travel	35 000 kPa	5,076 psi
Maximum Pressure – Swing	23 800 kPa	3,452 psi
Boom Cylinder – Bore	80 mm	3 in
Boom Cylinder – Stroke	1193 mm	47 in
Stick Cylinder – Bore	85 mm	3 in
Stick Cylinder – Stroke	1331 mm	52 in
Bucket Cylinder – Bore	75 mm	3 in
Bucket Cylinder – Stroke	1039 mm	41 in

318 GC Hydraulic Excavator Specifications

Service Refill Capacities

Fuel Tank Capacity	285 L	75.3 gal
Cooling System	11 L	2.9 gal
Engine Oil (with filter)	11 L	2.9 gal
Final Drive (each)	3 L	0.8 gal
Hydraulic System (including tank)	190 L	50.2 gal
Hydraulic Tank (including suction pipe)	94 L	24.8 gal

Standards

Brakes	ISO 10265:2008
Cab/Rollover Protective Structure (ROPS) (optional)	ISO 12117-2: 2008
Cab/Operator Protective Guards (OPG) (optional)	ISO 10262: 1998 – Level II

Sound Performance

ISO 6395:2008 (external) 104 dB(A)

ISO 6396:2008 (inside cab) 70 dB(A)

- Hearing protection may be needed when operating with an open operator station and cab (when not properly maintained or doors/windows open) for extended periods or in a noisy environment.

318 GC Hydraulic Excavator Specifications

Operating Weights and Ground Pressures

	600 mm (24") Triple Grouser Shoes		700 mm (28") Triple Grouser Shoes	
	Weight kg (lb)	Ground Pressure kPa (psi)	Weight kg (lb)	Ground Pressure kPa (psi)
Base Machine Configurations				
Base Frame with Track Rollers and Carrier Rollers				
3250 kg (7,170 lb) Counterweight and Long Undercarriage				
Reach Boom + R2.6 (8'6") Stick + 0.91 m ³ (1.19 yd ³) SD Bucket	17 200 (37,900)	40.7 (5.9)	17 500 (38,600)	35.5 (5.2)
HD Reach Boom + HD R2.6 (8'6") Stick + 0.91 m ³ (1.19 yd ³) SD Bucket	17 300 (38,100)	41.0 (5.9)	17 600 (38,800)	35.7 (5.2)
Reach Boom + R2.9 (9'6") Stick + 0.91 m ³ (1.19 yd ³) SD Bucket	17 300 (38,100)	41.0 (5.9)	17 500 (38,600)	35.5 (5.2)
Reach Boom + R2.6 (8'6") Stick + 0.91 m ³ (1.19 yd ³) General Duty (GD) Bucket	17 100 (37,700)	40.5 (5.9)	17 400 (38,400)	35.3 (5.1)
HD Reach Boom + HD R2.6 (8'6") Stick + 0.91 m ³ (1.19 yd ³) GD Bucket	17 200 (37,900)	40.7 (5.9)	17 500 (38,600)	35.5 (5.2)
Reach Boom + R2.9 (9'6") Stick + 0.91 m ³ (1.19 yd ³) GD Bucket	17 200 (37,900)	40.7 (5.9)	17 400 (38,400)	35.3 (5.1)

All operating weights include a 90% fuel tank with 75 kg (165 lb) operator.

318 GC Hydraulic Excavator Specifications

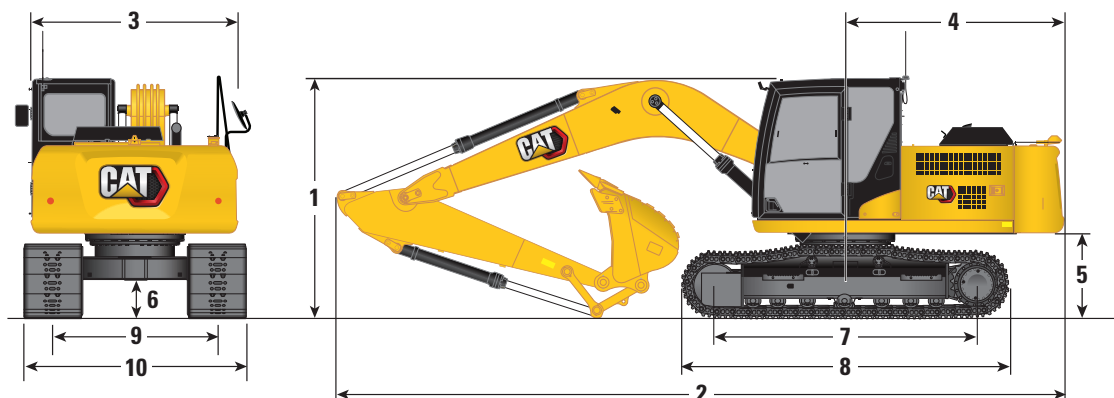
Major Component Weights

	kg	lb
Base Machine Weight (with 3250 kg [7,170 lb] counterweight, upper frame, long undercarriage with HD track rollers and two boom cylinders – does not include boom, stick, bucket, stick cylinder, bucket cylinders, tracks, fuel tank and operator).	11 700	25,800
Track Shoes:		
600 mm (24") Width, 8.5 mm (0.33") Thick, Double Grouser Track Shoes	2340	5,150
600 mm (24") Width, 8.5 mm (0.33") Thick, Triple Grouser Track Shoes	2340	5,150
700 mm (28") Width, 8.5 mm (0.33") Thick, Triple Grouser Track Shoes	2570	5,670
Two Boom Cylinders	300	650
Weight of 90% Fuel Tank and 75 kg (165 lb) Operator	280	610
Counterweight:		
3250 kg (7,165 lb) Counterweight	3250	7,170
Swing Frame	4260	9,390
Undercarriage (base frame with HD track rollers and HD carrier rollers)	3900	8,590
Booms (including lines, pins, stick cylinder):		
5.1 m (16'9") Reach Boom	1300	2,870
5.1 m (16'9") HD Reach Boom	1310	2,890
Sticks (including lines, pins, bucket cylinder, bucket linkage):		
R2.6 (8'6") Reach Stick	760	1,680
R2.6 (8'6") HD Reach Stick	860	1,890
R2.9 (9'6") Reach Stick	830	1,830
Bucket (without linkage, with tips and side cutters):		
0.91 m ³ (1.19 yd ³) Severe Duty (SD) with Advansys Tips	860	1,890
0.91 m ³ (1.19 yd ³) General Duty (GD) with Advansys Tips	750	1,650

318 GC Hydraulic Excavator Specifications

Dimensions

All dimensions are approximate and may vary depending on bucket selection.

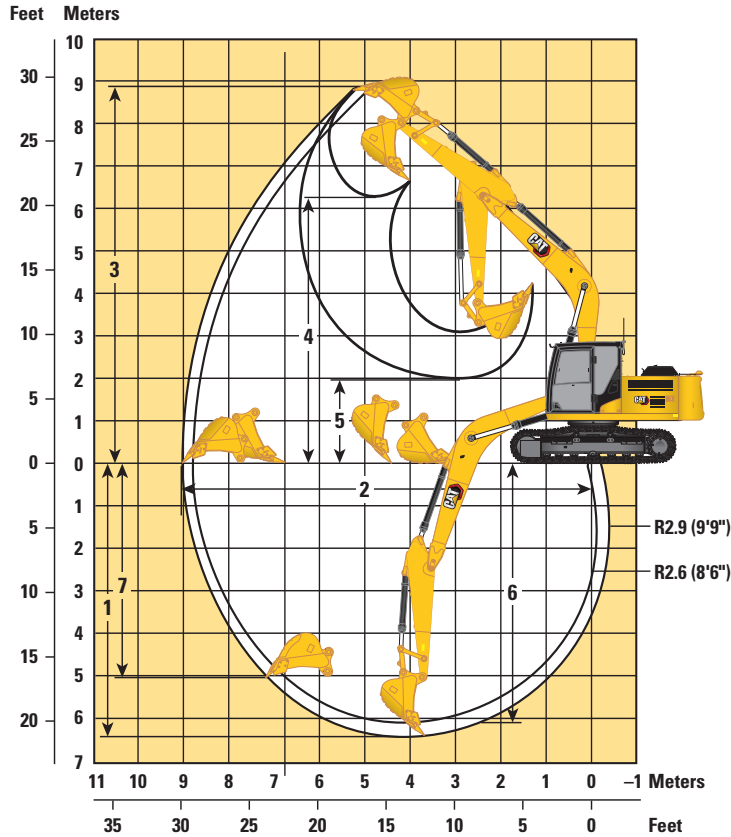


Boom Option	Reach Boom 5.1 m (16'9")			
	Reach Stick		Reach Stick	
Stick Option	R2.6 m (8'6")		R2.9 m (9'9")	
1 Machine Height				
Top of Cab Height	2900 mm	9'6"	2900 mm	9'6"
Top of OPG Height	3030 mm	9'11"	3030 mm	9'11"
Shipping Height with OPG (highest point between boom and cab)	3030 mm	9'11"	3060 mm	10'0"
Shipping Height without OPG	3020 mm	9'11"	3060 mm	10'1"
Handrail Height	2930 mm	9'7"	2930 mm	9'7"
With Boom/Stick/Bucket Installed	2970 mm	9'9"	3010 mm	9'10"
With Boom/Stick Installed	2840 mm	9'4"	2880 mm	9'5"
With Boom Installed	2450 mm	8'0"	2450 mm	8'0"
With Boom/Stick/Bucket Installed (with auxiliary lines)	3020 mm	9'11"	3060 mm	10'1"
With Boom/Stick Installed (with auxiliary lines)	2900 mm	9'6"	2840 mm	9'4"
With Boom Installed (with auxiliary lines)	2510 mm	8'3"	2510 mm	8'3"
2 Machine Length				
With Boom/Stick/Bucket Installed	8730 mm	28'8"	8740 mm	28'8"
With Boom/Stick Installed	8690 mm	28'6"	8710 mm	28'7"
With Boom Installed	7730 mm	25'4"	7730 mm	25'4"
With Boom/Stick/Bucket Installed (with auxiliary lines)	8730 mm	28'8"	8740 mm	28'8"
With Boom/Stick Installed (with auxiliary lines)	8690 mm	28'6"	8710 mm	28'7"
With Boom Installed (with auxiliary lines)	7730 mm	25'4"	7730 mm	25'4"
3 Upper Frame Width (without walkways)	2880 mm	9'5"	2880 mm	9'5"
4 Tail Swing Radius	2700 mm	8'10"	2700 mm	8'10"
5 Counterweight Clearance (without shoe lug)	1030 mm	3'4"	1030 mm	3'4"
6 Ground Clearance (without shoe lug)	460 mm	1'6"	460 mm	1'6"
7 Track Length – Length to Center of Rollers	3170 mm	10'5"	3170 mm	10'5"
8 Track Length – Overall Track Length	3970 mm	13'0"	3970 mm	13'0"
9 Track Gauge	1990 mm	6'6"	1990 mm	6'6"
10 Undercarriage Width (without steps):				
600 mm (24") Shoes	2590 mm	8'6"	2590 mm	8'6"
700 mm (28") Shoes	2690 mm	8'10"	2690 mm	8'10"
Bucket Type	SD		GD	
Bucket Capacity	0.91 m ³	1.19 yd ³	0.91 m ³	1.19 yd ³
Bucket Tip Radius	1391 mm	4'6"	1386 mm	4'7"

318 GC Hydraulic Excavator Specifications

Working Ranges and Forces

All dimensions are approximate and may vary depending on bucket selection.



Boom Option

Reach Boom
5.1 m (16'9")

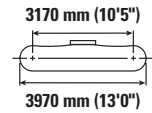
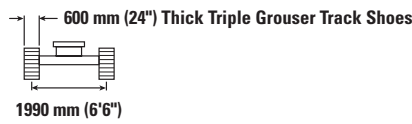
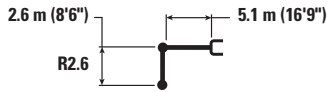
Stick Option

Reach Stick

	Reach Stick			
	R2.6 m (8'6")		R2.9 m (9'9")	
1 Maximum Digging Depth	6110 mm	20'1"	6410 mm	21'0"
2 Maximum Reach at Ground Line	8800 mm	28'10"	9010 mm	29'7"
3 Maximum Cutting Height	8930 mm	29'4"	8890 mm	29'2"
4 Maximum Loading Height	6270 mm	20'7"	6270 mm	20'7"
5 Minimum Loading Height	2280 mm	7'6"	1990 mm	6'6"
6 Maximum Depth Cut for 2440 mm (8ft) Level Bottom	5890 mm	19'4"	6170 mm	20'3"
7 Maximum Vertical Wall Digging Depth	5070 mm	16'8"	5050 mm	16'7"
Bucket Digging Force (ISO)	123 kN	27,650 lbf	123 kN	27,650 lbf
Stick Digging Force (ISO)	80 kN	17,980 lbf	75 kN	16,860 lbf
Bucket Type	SD		GD	
Bucket Capacity	0.91 m ³	1.19 yd ³	0.91 m ³	1.19 yd ³
Bucket Tip Radius	1391 mm	4'6"	1386 mm	4'7"

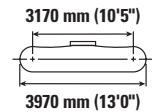
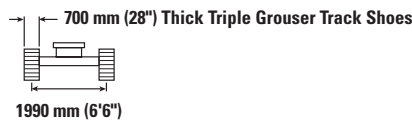
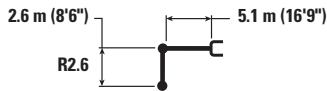
318 GC Hydraulic Excavator Specifications

Reach Boom Lift Capacities – Counterweight: 3.25 mt (7,165 lb) – without Bucket



Boom Length	Unit	1500 mm/5'0"		3000 mm/10'0"		4500 mm/15'0"		6000 mm/20'0"		7500 mm/25'0"		mm		ft
		Hydraulic	Tipping	Hydraulic	Tipping	Hydraulic	Tipping	Hydraulic	Tipping	Hydraulic	Tipping	Hydraulic	Tipping	
7500 mm 25'0"	kg lb					*7,650	*7,650					*3350 *7,450	*3350 *7,450	4760 15.10
6000 mm 20'0"	kg lb							*3550 *6,600	3450 *6,600			*2950 *6,450	*2950 *6,450	6180 20.05
4500 mm 15'0"	kg lb					*4650 *10,050	*4650 *10,050	*4350 *9,450	3400 7,350			*2850 *6,200	*2650 *5,900	7010 22.90
3000 mm 10'0"	kg lb			*8900 *18,900	*8900 *18,900	*5900 *12,750	5000 10,750	*4850 *10,550	3300 7,050			*2900 *6,300	2350 5,200	7450 24.40
1500 mm 5'0"	kg lb					*7250 *15,650	4650 10,050	5000 10,800	3150 6,750	*3500 2300		*3100 *6,750	2250 4,950	7560 24.81
0 mm 0'0"	kg lb			*6150 *14,200	*6150 *14,200	7550 16,150	4450 9,600	4900 10,500	3050 6,500			*3450 *7,600	2300 5,050	7370 24.18
-1500 mm -5'0"	kg lb	*5650 *12,600	*5650 *12,600	*10,050 *22,900	8050 17,200	7450 16,000	4400 9,450	4850 10,400	3000 6,400			4050 8,900	2500 5,550	6840 22.42
-3000 mm -10'0"	kg lb	*9900 *22,250	*9900 *22,250	*10,800 *23,350	8150 17,500	*7500 16,100	4450 9,550					5050 11,150	3100 6,900	5900 19.21
-4500 mm -15'0"	kg lb			*7800 *16,500	*7800 *16,500							*5450 *12,000	5050 11,550	4240 13.55

Reach Boom Lift Capacities – Counterweight: 3.25 mt (7,165 lb) – without Bucket



Boom Length	Unit	1500 mm/5'0"		3000 mm/10'0"		4500 mm/15'0"		6000 mm/20'0"		7500 mm/25'0"		mm		ft
		Hydraulic	Tipping	Hydraulic	Tipping	Hydraulic	Tipping	Hydraulic	Tipping	Hydraulic	Tipping	Hydraulic	Tipping	
7500 mm 25'0"	kg lb					*7,650	*7,650					*3350 *7,450	*3350 *7,450	4760 15.10
6000 mm 20'0"	kg lb							*3550 *6,600	3500 *6,600			*2950 *6,450	*2950 *6,450	6180 20.05
4500 mm 15'0"	kg lb					*4650 *10,050	*4650 *10,050	*4350 *9,450	3450 7,400			*2850 *6,200	*2700 5,950	7010 22.90
3000 mm 10'0"	kg lb			*8900 *18,900	*8900 *18,900	*5900 *12,750	5050 10,850	*4850 *10,550	3350 7,150			*2900 *6,300	2400 5,250	7450 24.40
1500 mm 5'0"	kg lb					*7250 *15,650	4700 10,150	5100 10,900	3200 6,850	*3500 2300		*3100 *6,750	2300 5,000	7560 24.81
0 mm 0'0"	kg lb			*6150 *14,200	*6150 *14,200	7650 16,400	4500 9,700	4950 10,650	3050 6,600			*3450 *7,600	2350 5,100	7370 24.18
-1500 mm -5'0"	kg lb	*5650 *12,600	*5650 *12,600	*10,050 *22,900	8150 17,450	7550 16,200	4450 9,550	4900 10,550	3000 6,500			4100 9,000	2550 5,600	6840 22.42
-3000 mm -10'0"	kg lb	*9900 *22,250	*9900 *22,250	*10,800 *23,350	8250 17,700	*7500 *16,150	4500 9,650					5100 11,300	3150 7,000	5900 19.21
-4500 mm -15'0"	kg lb			*7800 *16,500	*7800 *16,500							*5450 *12,000	5100 11,700	4240 13.55



ISO 10567:2007



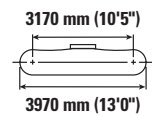
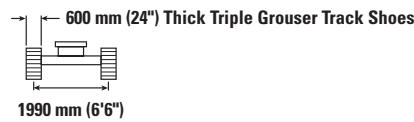
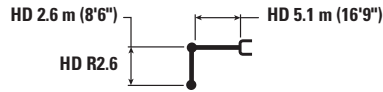
* Indicates that the load is limited by hydraulic lifting capacity rather than tipping load. The above loads are in compliance with hydraulic excavator lift capacity standard ISO 10567:2007. They do not exceed 87% of hydraulic lifting capacity or 75% of tipping load. Weight of all lifting accessories must be deducted from the above lifting capacities. Lifting capacities are based on the machine standing on a firm, uniform supporting surface. The use of a work tool attachment point to handle/lift objects, could affect the machine lift performance.

Lift capacity stays with ±5% for all available track shoes.

Always refer to the appropriate Operation and Maintenance Manual for specific product information.

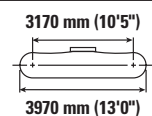
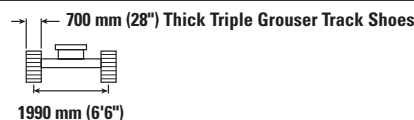
318 GC Hydraulic Excavator Specifications

HD Reach Boom Lift Capacities – Counterweight: 3.25 mt (7,165 lb) – without Bucket



		1500 mm/5'0"		3000 mm/10'0"		4500 mm/15'0"		6000 mm/20'0"		7500 mm/25'0"		mm ft		
7500 mm 25'0"	kg lb					*7,550	*7,550					*3300 *7,350	*3300 *7,350	4760 15.10
6000 mm 20'0"	kg lb							*3550 *6,550	3400 *6,550			*2900 *6,400	*2900 *6,400	6180 20.05
4500 mm 15'0"	kg lb					*4550 *9,850	*4550 *9,850	*4250 *9,250	3350 7,200			*2800 *6,100	2600 *5,700	7010 22.90
3000 mm 10'0"	kg lb			*8750 *18,600	*8750 *18,600	*5800 *12,450	4900 10,550	*4750 *10,300	3200 6,900			*2850 *6,200	2300 5,000	7450 24.40
1500 mm 5'0"	kg lb					*7100 *15,300	4550 9,800	4950 10,600	3050 6,550	*3450	2200	*3050 *6,650	2150 4,750	7560 24.81
0 mm 0'0"	kg lb			*6150 *14,100	*6150 *14,100	7400 15,900	4300 9,300	4800 10,300	2900 6,300			*3400 *7,500	2200 4,850	7370 24.18
-1500 mm -5'0"	kg lb	*5600 *12,550	*5600 *12,550	*10 000 *22,800	7800 16,750	7300 15,700	4250 9,100	4750 10,200	2850 6,150			3950 8,700	2400 5,350	6840 22.42
-3000 mm -10'0"	kg lb	*9850 *22,150	*9850 *22,150	*10 550 *22,800	7950 17,050	*7300 *15,750	4300 9,250					4950 10,950	3000 6,650	5900 19.21
-4500 mm -15'0"	kg lb			*7600 *16,000	*7600 *16,000							*5300 *11,600	4950 11,300	4240 13.55

HD Reach Boom Lift Capacities – Counterweight: 3.25 mt (7,165 lb) – without Bucket



		1500 mm/5'0"		3000 mm/10'0"		4500 mm/15'0"		6000 mm/20'0"		7500 mm/25'0"		mm ft		
7500 mm 25'0"	kg lb					*7,550	*7,550					*3300 *7,350	*3300 *7,350	4760 15.10
6000 mm 20'0"	kg lb							*3550 *6,550	3450 *6,550			*2900 *6,400	*2900 *6,400	6180 20.05
4500 mm 15'0"	kg lb					*4550 *9,850	*4550 *9,850	*4250 *9,250	3400 7,250			*2800 *6,100	2600 5,800	7010 22.90
3000 mm 10'0"	kg lb			*8750 *18,600	*8750 *18,600	*5800 *12,450	4950 10,700	*4750 *10,300	3250 7,000			*2850 *6,200	2300 5,100	7450 24.40
1500 mm 5'0"	kg lb					*7100 *15,300	4600 9,900	5000 10,750	3100 6,650	*3450	2250	*3050 *6,650	2200 4,800	7560 24.81
0 mm 0'0"	kg lb			*6150 *14,100	*6150 *14,100	7500 16,100	4350 9,400	4850 10,450	2950 6,350			*3400 *7,500	2250 4,900	7370 24.18
-1500 mm -5'0"	kg lb	*5600 *12,550	*5600 *12,550	*10 000 *22,800	7900 16,950	7400 15,900	4300 9,250	4800 10,350	2900 6,250			4000 8,800	2450 5,400	6840 22.42
-3000 mm -10'0"	kg lb	*9850 *22,150	*9850 *22,150	*10 550 *22,800	8050 17,250	*7300 *15,750	4350 9,350					5000 11,100	3050 6,750	5900 19.21
-4500 mm -15'0"	kg lb			*7600 *16,000	*7600 *16,000							*5300 *11,600	5000 11,400	4240 13.55



ISO 10567:2007



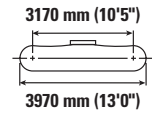
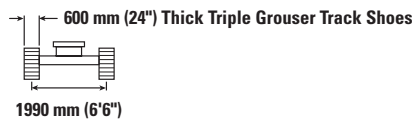
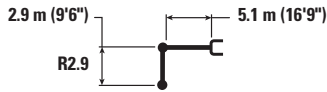
* Indicates that the load is limited by hydraulic lifting capacity rather than tipping load. The above loads are in compliance with hydraulic excavator lift capacity standard ISO 10567:2007. They do not exceed 87% of hydraulic lifting capacity or 75% of tipping load. Weight of all lifting accessories must be deducted from the above lifting capacities. Lifting capacities are based on the machine standing on a firm, uniform supporting surface. The use of a work tool attachment point to handle/lift objects, could affect the machine lift performance.

Lift capacity stays with ±5% for all available track shoes.

Always refer to the appropriate Operation and Maintenance Manual for specific product information.

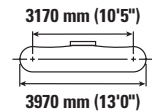
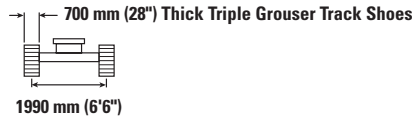
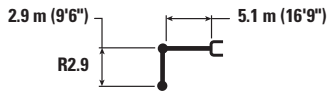
318 GC Hydraulic Excavator Specifications

Reach Boom Lift Capacities – Counterweight: 3.25 mt (7,165 lb) – without Bucket



Reach Boom Lift Configuration	1500 mm/5'0"		3000 mm/10'0"		4500 mm/15'0"		6000 mm/20'0"		7500 mm/25'0"		3170 mm (10'5") 3970 mm (13'0")		mm ft	
	kg lb	kg lb	kg lb	kg lb	kg lb	kg lb	kg lb	kg lb	kg lb	kg lb	kg lb	kg lb		
7500 mm 25'0"												*2950 *6,600	*2950 *6,600	5090 16.22
6000 mm 20'0"							*3650 *7,450	3500 *7,450				*2700 *5,900	*2700 *5,900	6440 20.91
4500 mm 15'0"							*4050 *8,900	3400 7,350				*2600 *5,750	2500 5,600	7240 23.65
3000 mm 10'0"			*8000 *17,100	*8000 *17,100	*5550 *11,950	5000 10,800	*4650 *10,050	3300 7,050	*3350 *6,200	2350 5,000		*2700 *5,850	2250 4,950	7660 25.10
1500 mm 5'0"			*7000 *16,700	*7000 *16,700	*6950 *15,000	4650 10,050	5000 10,750	3150 6,700	3600 7,700	2250 4,850		*2900 *6,300	2150 4,700	7770 25.50
0 mm 0'0"			*6950 *15,950	*6950 *15,950	7500 16,100	4450 9,550	4850 10,450	2950 6,450	3550	2200		*3250 *7,150	2200 4,750	7580 24.88
-1500 mm -5'0"		*5650 *12,550	*5650 *12,550	*10 000 *22,700	7950 17,000	7400 15,900	4350 9,300	4800 10,300	3000 6,300			3800 8,400	2350 5,200	7080 23.18
-3000 mm -10'0"		*9250 *20,700	*9250 *20,700	*11 200 *24,200	8050 17,250	7450 15,950	4350 9,400	4850 10,400	2950 6,400			4650 10,350	2850 6,350	6160 20.10
-4500 mm -15'0"				*8600 *18,350	*8300 *17,850	*5750	4550					*5550 *12,250	4400 10,000	4610 14.79

Reach Boom Lift Capacities – Counterweight: 3.25 mt (7,165 lb) – without Bucket



Reach Boom Lift Configuration	1500 mm/5'0"		3000 mm/10'0"		4500 mm/15'0"		6000 mm/20'0"		7500 mm/25'0"		3170 mm (10'5") 3970 mm (13'0")		mm ft	
	kg lb	kg lb	kg lb	kg lb	kg lb	kg lb	kg lb	kg lb	kg lb	kg lb	kg lb	kg lb		
7500 mm 25'0"												*2950 *6,600	*2950 *6,600	5090 16.22
6000 mm 20'0"							*3650 *7,450	3500 *7,450				*2700 *5,900	*2700 *5,900	6440 20.91
4500 mm 15'0"							*4050 *8,900	3450 7,450				*2600 *5,750	2550 5,650	7240 23.65
3000 mm 10'0"			*8000 *17,100	*8000 *17,100	*5550 *11,950	5050 10,900	*4650 *10,050	3300 7,150	*3350 *6,200	2350 5,050		*2700 *5,850	2300 5,000	7660 25.10
1500 mm 5'0"			*7000 *16,700	*7000 *16,700	*6950 *15,000	4700 10,150	5050 10,900	3150 6,800	3650 7,800	2300 4,900		*2900 *6,300	2200 4,750	7770 25.50
0 mm 0'0"			*6950 *15,950	*6950 *15,950	7600 16,350	4500 9,650	4950 10,600	3050 6,550	3600	2250		*3250 *7,150	2200 4,850	7580 24.88
-1500 mm -5'0"		*5650 *12,550	*5650 *12,550	*10 000 *22,700	8000 17,200	7500 16,100	4400 9,450	4850 10,450	3000 6,400			3850 8,500	2400 5,300	7080 23.18
-3000 mm -10'0"		*9250 *20,700	*9250 *20,700	*11 200 *24,200	8150 17,450	7550 16,150	4400 9,500	4900 10,550	3000 6,500			4700 10,450	2900 6,450	6160 20.10
-4500 mm -15'0"				*8600 *18,350	8400 18,050	*5750	4600					*5550 *12,250	4450 10,100	4610 14.79



ISO 10567:2007



* Indicates that the load is limited by hydraulic lifting capacity rather than tipping load. The above loads are in compliance with hydraulic excavator lift capacity standard ISO 10567:2007. They do not exceed 87% of hydraulic lifting capacity or 75% of tipping load. Weight of all lifting accessories must be deducted from the above lifting capacities. Lifting capacities are based on the machine standing on a firm, uniform supporting surface. The use of a work tool attachment point to handle/lift objects, could affect the machine lift performance.

Lift capacity stays with ±5% for all available track shoes.

Always refer to the appropriate Operation and Maintenance Manual for specific product information.

318 GC Hydraulic Excavator Specifications

Bucket Specifications and Compatibility

	Linkage	Width		Capacity		Weight		Fill	Reach Boom	HD Reach Boom	Reach Boom
		mm	in	m ³	yd ³	kg	lb				
Pin-On (No Quick Coupler)											
General Duty	315	1200	48	0.91	1.19	693	1,529	100	⊙	⊖	⊖
Severe Duty	315	1200	48	0.91	1.19	802	1,768	90	⊙	⊙	⊙
Maximum load with pin-on (payload + bucket)								kg	2355	2229	2223
								lb	5,192	4,914	4,901

The above loads are in compliance with hydraulic excavator standard EN474-5:2006+A3:2013, they do not exceed 87% of hydraulic lifting capacity or 75% of tipping capacity with front linkage fully extended at ground line with bucket curled.

Capacity based on ISO 7451:2007.

Maximum Material Density:

⊙ 1800 kg/m³ (3,000 lb/yd³)

⊖ 1500 kg/m³ (2,500 lb/yd³)

Caterpillar recommends using appropriate work tools to maximize the value customers receive from our products. Use of work tools, including buckets, which are outside of Caterpillar's recommendations or specifications for weight, dimensions, flows, pressures, etc. may result in less-than-optimal performance, including but not limited to reductions in production, stability, reliability, and component durability. Improper use of a work tool resulting in sweeping, prying, twisting and/or catching of heavy loads will reduce the life of the boom and stick.

318 GC Hydraulic Excavator Specifications

Attachments Offering Guide

Not all attachments are available in all regions. Consult your Cat dealer for configurations available in your region.

Match

PIN-ON ATTACHMENTS

Boom Type		Reach Boom	HD Reach Boom	Reach Boom
Stick Length		R2.6 m (8'6")	HD R2.6 m (8'6")	R2.9 m (9'6")
Hydraulic Hammers	H110 GC	✓	✓	✓
	H110 GC Side Mount	✓	✓	✓
	H110 S	✓	✓	✓
	H115 GC	✓	✓	✓
	H115 GC Side Mount	✓	✓	✓
	H115 GC S	✓	✓	✓
	H115 S	✓	✓	✓
	H120 S	✓	✓	✓
Pulverizers	P214 Secondary Pulverizer Jaw	✓	✓	✓
Mulchers	HM4015	✓	✓	✓
	HM4815	✓	✓	✓
Compactors (Vibratory Plate)	CVP75	✓	✓	✓
Rotary Cutters	RC15	✓	✓	✓
	RC20	✓	✓	✓

Standard and Optional Equipment

Standard and optional equipment may vary. Consult your Cat dealer for details.

	Standard	Optional		Standard	Optional
BOOM AND STICKS			HYDRAULIC SYSTEM		
5.1 m (16'9") Reach boom		✓	Electronic main control valve	✓	
5.1 m (16'9") HD Reach boom		✓	Single type electronic main pump	✓	
2.6 m (8'6") Reach stick		✓	Boom and stick regeneration circuits	✓	
2.6 m (8'6") HD Reach stick		✓	Automatic hydraulic oil warm up	✓	
2.9 m (9'6") Reach stick		✓	Automatic two-speed travel	✓	
CAB			Hammer lines		✓
OPG		✓	Hammer floor pedal kit		✓
Sound suppressed with viscous mounts	✓		Element type main hydraulic filter	✓	
High-resolution 203 mm (8") LCD touchscreen monitor	✓		High performance hydraulic return filter	✓	
Mechanically adjustable seat with headrest	✓		SAFETY AND SECURITY		
Auto bi-level air conditioner	✓		Anti-skid plating with countersunk bolts	✓	
Keyless push-to-start engine control	✓		Right-hand handrail and hand hold	✓	
Floor-mounted adjustable consoles	✓		Lockable external tool/storage box	✓	
1-button joystick	✓		Lockable disconnect switch	✓	
1 slider joystick		✓	Ground-level engine shutoff switch	✓	
AM/FM radio with USB and Auxiliary port	✓		Right-hand-side mirror	✓	
24V DC outlet	✓		Rearview camera		✓
Cup holder and storage compartments	✓		Signaling/warning horn	✓	
70/30 tempered glass windshield	✓		Hydraulic lockout lever	✓	
Openable steel hatch	✓		Travel alarm	✓	
Dome light	✓		SERVICE AND MAINTENANCE		
Washable floor mat	✓		Grouped location of filters	✓	
CAT TECHNOLOGY			Radiator screen	✓	
VisionLink®	✓*		Scheduled Oil Sampling (S-O-S SM) sampling ports	✓	
ELECTRICAL SYSTEM			Integrated vehicle health management system	✓	
750 CCA maintenance-free batteries (×2)	✓		UNDERCARRIAGE AND STRUCTURES		
Electrical disconnect switch	✓		Long undercarriage	✓	
LED left-side boom and chassis lights	✓		600 mm (24") double grouser track shoes		✓
LED right-side boom light		✓	600 mm (24") triple grouser track shoes		✓
LED cab light		✓	700 mm (28") triple grouser track shoes		✓
ENGINE			Grease lubricated track links	✓	
Cat® C3.6 single turbo diesel engine	✓		Center track guiding guard	✓	
Three selectable modes: Power, Smart, Eco	✓		Bottom guards	✓	
46° C (115° F) high-ambient cooling capability	✓		Travel motor guards	✓	
-18° C (0° F) cold start capability	✓		Swivel guard	✓	
Electric fuel priming pump	✓		3250 kg (7,165 lb) counterweight	✓	
Two-stage fuel filtration system	✓		Tie-down points	✓	
Sealed double-element air filter with pre-cleaner	✓				

*Connect subscription only. Additional subscriptions are available. Contact your Cat dealer for availability

318 GC Attachments

Dealer Installed Kits and Attachments

Attachments may vary. Consult your Cat dealer for details.

CAB

- Laminated upper 70/30 glass
- Tempered upper 70/30 glass
- Foot switch with right-hand-side mount

SERVICE PARTS

- Mesh guard full front (not compatible with cab light cover, rain protector)
- Operator Protective Guards (OPG)

The following information applies to the machine at the time of final manufacture as configured for sale in the regions covered in this document. The content of this declaration is valid as of the date issued; however, content related to machine features and specifications are subject to change without notice. For additional information, please see the machine's Operation and Maintenance Manual.

For more information on sustainability in action and our progress, please visit <https://www.caterpillar.com/en/company/sustainability>.

Engine

- The Cat C3.6 engine meets Brazil MAR-1 emission standards, equivalent to U.S. EPA Tier 3 and EU Stage IIIA.
- Cat engines are compatible with diesel fuel blended with the following lower-carbon intensity fuels** up to:
 - ✓ 100% biodiesel FAME (fatty acid methyl ester)*
 - ✓ 100% renewable diesel, HVO (hydrotreated vegetable oil) and GTL (gas-to-liquid) fuels

Refer to guidelines for successful application. Please consult your Cat dealer or "Caterpillar Machine Fluids Recommendations" (SEBU6250) for details.

**For use of blends higher than 20% biodiesel, consult your Cat dealer.*

***Tailpipe greenhouse gas emissions from lower-carbon intensity fuels are essentially the same as traditional fuels.*

Air Conditioning System

- The air conditioning system on this machine contains the fluorinated greenhouse gas refrigerant R134a (Global Warming Potential = 1430). The system contains 0.95 kg (2.1 lb) of refrigerant which has a CO₂ equivalent of 1.359 metric tonnes (1.498 tons).

Paint

- Based on best available knowledge, the maximum allowable concentration, measured in parts per million (PPM), of the following heavy metals in paint are:
 - Barium < 0.01%
 - Cadmium < 0.01%
 - Chromium < 0.01%
 - Lead < 0.01%

Sound Performance

ISO 6395 (external)	104 dB(A)
ISO 6396 (inside cab)	70 dB(A)

- Hearing protection may be needed when operating with an open operator station and cab (when not properly maintained or doors/windows open) for extended periods or in a noisy environment.

Oils and Fluids

- Caterpillar factory fills with ethylene glycol coolants. Cat Diesel Engine Antifreeze/Coolant (DEAC) and Cat Extended Life Coolant (ELC) can be recycled. Consult your Cat dealer for more information.
- Cat Bio HYDO™ Advanced is an EU Ecolabel approved biodegradable hydraulic oil.
- Additional fluids are likely to be present, please consult the Operations and Maintenance Manual or the Application and Installation guide for complete fluid recommendations and maintenance intervals.

Features and Technology

- The following features and technology may contribute to fuel savings and/or carbon reduction. Features may vary. Consult your Cat dealer for details.
 - Advanced hydraulic systems balance power and efficiency
 - Smart mode matches machine power to digging requirements automatically
 - Automatic Engine Control (AEC) system reduces RPM when hydraulic demand is low
 - Eco mode minimizes fuel consumption for light applications
 - One-touch low idle with automatic engine speed control
 - Hydraulic return filter provides longer life with a 3,000-hour replacement interval



For more complete information on Cat products, dealer services, and industry solutions, visit us on the web at www.cat.com

© 2024 Caterpillar
All rights reserved

Materials and specifications are subject to change without notice. Featured machines in photos may include additional equipment. See your Cat dealer for available options.

CAT, CATERPILLAR, LET'S DO THE WORK, their respective logos, "Caterpillar Corporate Yellow," the "Power Edge" and Cat "Modern Hex" trade dress as well as corporate and product identity used herein, are trademarks of Caterpillar and may not be used without permission.

AEXQ3744 (07-2024)
Build Number: 05A
(S Am)

