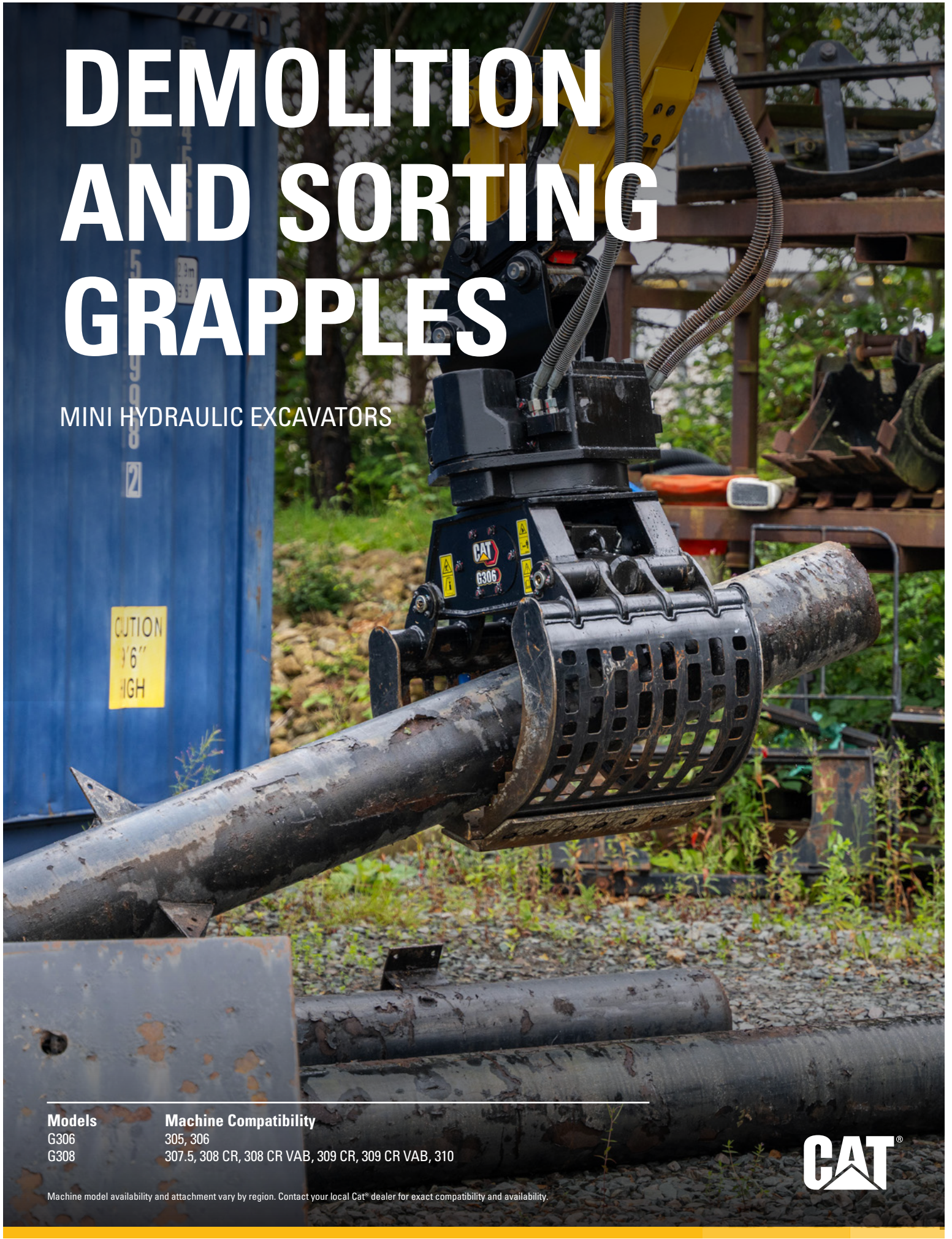


DEMOLITION AND SORTING GRAPPLES

MINI HYDRAULIC EXCAVATORS



Models

G306
G308

Machine Compatibility

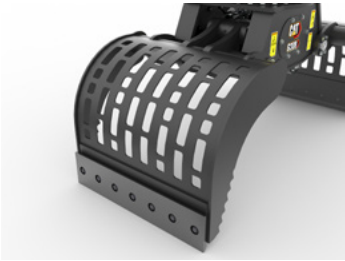
305, 306
307.5, 308 CR, 308 CR VAB, 309 CR, 309 CR VAB, 310

Machine model availability and attachment vary by region. Contact your local Cat® dealer for exact compatibility and availability.



Cat® Demolition and Sorting Grapples are designed for fast, productive material handling with 360 degrees of bi-directional rotation. The G306 and G308 are best used in heavy-duty material handling of waste and recycling applications where precise material positioning and placement is required.

FEATURES



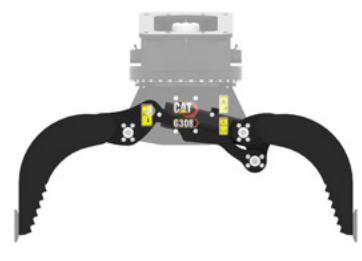
VERTICALLY PERFORATED SIDE PLATES

Better load visibility and easier positioning. Plates are hardened to HB450 standards providing higher wear resistance.



SPECIALLY DESIGNED PINS

Oversized pins have high resistance against torque forces and increased durability. Grooved bushings allow for easy greasing.



OPTIMALLY DESIGNED LINKAGE

Minimal height increase when opening and closing, creates a synchronized movement of the grapple arms. Optimal cylinder guidance ensures high clamp forces during closing.



OVERSIZED CYLINDER

Ensures a continuous and even, high clamping force to prevent loss of load. Load holding valve prevents overload damage by halting any movement without engaging the joystick.



SLIM DESIGN

Easier maneuvering within building construction or containers in demolition and recycling applications. Optimal jumper lines routing avoids damage.



ROBUST BOLT-ON CUTTING EDGE

Provides high wear lifetime. Plow bolts utilize recessed nuts and are fully protected.



G306



G308

HIGH DISPLACEMENT MOTOR

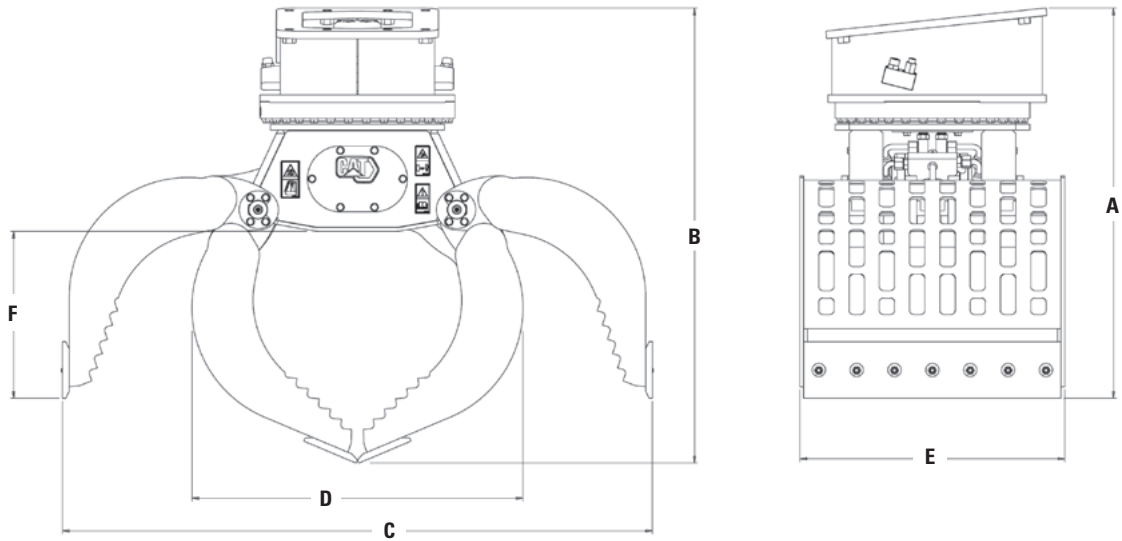
Robust hydraulic design maximizes rotation torque and optimizes rotation speed.



WIDEST FRAME IN CLASS

Strong design protects internal components from debris damage. Oval access panel offers easy service accessibility.

DIMENSIONS



Model	G306	G308
A Overall Height (grapple open)	894 mm 35.2 in	1033 mm 40.7 in
B Overall Height (grapple closed)	1057 mm 41.6 in	1205 mm 47.4 in
C Overall Width (grapple open)	1404 mm 55.3 in	1562 mm 61.5 in
D Overall Width (grapple closed)	732 mm 28.8 in	875 mm 34.4 in
E Overall Depth	600 mm 23.6 in	700 mm 27.6 in
F Height (inside)	374 mm 14.7 in	443 mm 17.4 in
Grapple Area	160 L 5.7 ft ³	240 L 8.5 ft ³
Weight	332 kg 732 lb	492 kg 1,085 lb
Maximum Closing Force	27 kN 3 Sh Ton	44 kN 4.9 Sh Ton
Shell Type	Perforated	Perforated
Machine Class	5-6 Ton	7-10 Ton
Interface Type	S40, CW10, Pin On	S45, S50, CW10, Pin On, Pin Lock



G306



G308



STANDARD TWO-YEAR WARRANTY

Standard two-year warranty gives you peace of mind when purchasing a quality Cat grapple.

BRACKETS

Cat hammer brackets are interchangeable with the Cat G306 and G308 demolition and sorting grapple.



S Type



CW



Pin On (pin grabber)



Pin Lock

For more complete information on Cat products, dealer services and industry solutions, visit us on the web at www.cat.com

© 2024 Caterpillar. All Rights Reserved.

Materials and specifications are subject to change without notice. Featured machines in photos may include additional equipment. See your Cat dealer for available options.

CAT, CATERPILLAR, LET'S DO THE WORK, their respective logos, "Caterpillar Corporate Yellow," the "Power Edge" and Cat "Modern Hex" trade dress as well as corporate and product identity used herein, are trademarks of Caterpillar and may not be used without permission.
www.cat.com www.caterpillar.com

AEHQ8442-01 (10-2024)
Replaces AEHQ8442
(Global)

