

M320

WHEELED EXCAVATOR



| | |
|--------------------------|-----------------------|
| Engine Power – ISO 14396 | 128.8 kW (173 hp) |
| Operating Weight Maximum | 19 500 kg (42,990 lb) |
| Maximum Travel Speed | 37 km/h (23 mile/h) |



M320

WHEELED EXCAVATOR

A quiet cab and efficient power systems mean happier operators and more profit from every task you throw at the Cat® M320 Wheeled Excavator. Built to take on the toughest conditions, the M320 offers optional configurations and attachments to handle most any jobsite need.



USE LESS FUEL

Auto Engine Speed Control and Eco Mode lower your fuel bill without impacting your productivity.

EASY TO SERVICE

Reduce owning and operating costs with quick, easy-to-do maintenance.

MORE VERSATILITY

Flexible machine configurations and a variety of attachments allow you to customize your machine to fit your needs.

PERFORMANCE AND PRODUCTIVITY

- Cat®C7.1 engine meets EU Stage IIIA equivalent emission standards.
- Engine fuel system designed to manage world-wide fuel quality and provide outstanding low fuel consumption during both working and traveling applications.
- One-Touch Low Idle Control and Automatic Engine Speed Control reduce engine speed if no operation is performed, reducing fuel consumption and sound levels.
- Three working modes: Power mode, Eco mode and Travel mode.
- Constant Power Strategy, providing a quick response to changing loads, while delivering the same amount of power.
- Choice of various booms and sticks provides the right balance of reach and digging forces for all applications.
- Dedicated Swing Pump allows faster and smoother combined movements when using the implements while swinging.



EXPAND YOUR CAPABILITIES



- Multiple configurations meet all your applications needs, with a choice of booms, sticks, blade and/or stabilizer undercarriages.
- Highly mobile, the M320 can travel up to 37 km/h.
- Standard one-way high pressure hydraulics allow customers to install attachments like hammers without adding other lines.
- Ten hydraulic pump flow and pressure settings can be preset within the monitor allowing quicker and easier attachment (optional).
- A lifting eye into the bucket linkage, the heavy lift mode and the overload warning signal allow operators to safely lift heavy loads.
- Wide range of Cat attachments to handle any job at hand.



OPERATOR COMFORT AND SAFETY



- Rollover Protective Structure (ROPS) cab structure and Operator Protective Guards (OPG) (top and front guards) are available.
- Ergonomically designed cab with controls kept to a minimum, conveniently located and easy to operate.
- The optional air-suspension seat, with automatic weight adjustment and heated cushions enhance comfort and productivity.
- Safety is enhanced by the all-round visibility provided by large glass areas and skylight and the standard rear-mounted camera image displayed on the full color monitor.
- Low sound levels, as a result of the variable fan speed and remote cooling system enabling.



LOWER MAINTENANCE COSTS



- 500 hours fuel filter replacement (reduced to 250 hours if fuel quality is sub-standard) allows reduced maintenance cost.
- All daily maintenance points are accessible from ground level.
- Clean design, with colored and numbered electrical wires, protected by thick braiding for ease of service.
- Greasing points are centralized and kept to a minimum.
- Cat XT™-6 ES hoses are resistant and durable, which reduces the risk of leaks that can decrease the performance of the machine.
- Rigidity and long life with effective transmission protection and heavy duty axle.
- Standard heavy duty batteries for improved cold start capability.

INTEGRATED CAT TECHNOLOGIES

- Cat technology solutions increase production and minimize operating costs. Link technologies wirelessly connect you to your jobsite, providing machine location, hours, fuel usage, idle time and event codes.



MORE THAN MACHINES

BUILT AROUND YOUR SUCCESS

When you buy Cat equipment, you get so much more than the machine. You also get the support of a best-in-class dealer network, backed by a range of flexible solutions, technology, tools, and more.



CUSTOMER VALUE AGREEMENTS

A Customer Value Agreement (CVA) from your Cat dealer helps you do more and worry less. A CVA simplifies machine ownership and maintenance, adds the security of expert dealer support, and gives you the peace of mind from effective equipment health management.*

GENUINE CAT PARTS

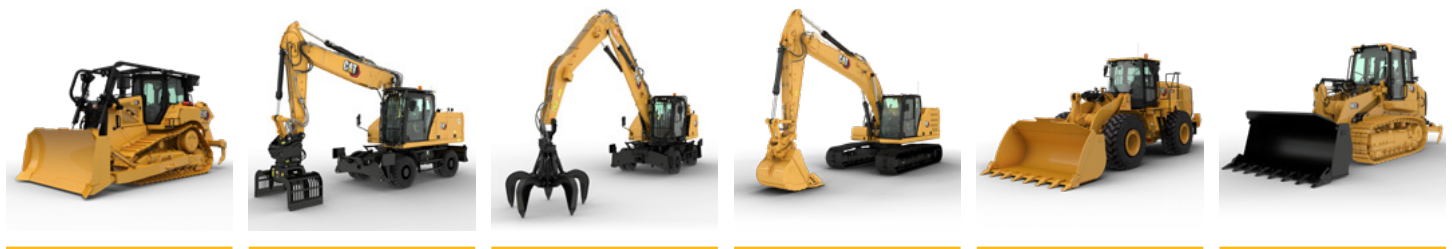
Genuine Cat parts deliver the highest level of reliability and productivity. Order direct from your Cat dealer or shop online at parts.cat.com.

REPAIR OPTIONS

A broad range of repair options gives you choices that work with your needs, budget, and timeline. Every repair is performed by expert Cat technicians. You'll receive smart repair advice, a timely, accurate quote, and service that gets your machine back into action quickly.

FINANCIAL SERVICES

Count on Cat Financial to provide the best finance and extended protection solutions for your business. For more than 30 years, we have helped our customers succeed through financial service excellence.*



DOZERS

WHEELED EXCAVATORS

MATERIAL HANDLERS

EXCAVATORS

WHEEL LOADERS

TRACK LOADERS

**Offerings and services may vary by region. Please consult your Cat dealer for availability in your area.*

INCREASE PRODUCTIVITY AND VERSATILITY

WITH CAT ATTACHMENTS

You can easily expand the performance of your machine by utilizing any of the variety of Cat attachments. Each Cat attachment is designed to fit the weight and horsepower of Cat wheeled excavators for improved performance, safety, and stability.

BUCKETS



GRAPPLES



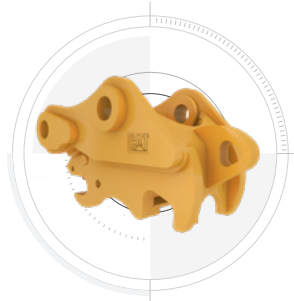
HYDRAULIC HAMMERS



**VIBRATORY PLATE
COMPACTORS**



PIN GRABBER COUPLER



ORANGE PEEL GRAPPLES



SHEARS



TECHNICAL SPECIFICATIONS

Engine

| | | |
|--------------------------|---|-----------------------|
| Engine Model | Cat C4.4 | |
| Engine Power – ISO 14396 | 128.8 kW | 173 hp |
| Bore | 105 mm | 4.1 in |
| Displacement | 7 L | 427.8 in ³ |
| Stroke | 135 mm | 5.3 in |
| Engine Emissions | Meets U.S. EPA Tier 3 and EU Stage IIIA emission standards. | |

The M320 meets Tier 3 and Stage IIIA emission standards. Net power is tested per ISO 9249:2007. Standards in effect at the time of manufacture. Net power available at flywheel when the engine is equipped with fan, air cleaner, muffler, and alternator with engine speed at 2,000 rpm.

No engine power derating required below 3000 m (9,843 ft) altitude.

Recommended for use up to 3000 m (9,843 ft) altitude with engine power derate above 3000 m (9,843 ft).

Rated speed at 2,000 rpm.

Hydraulic System

| | | |
|--|------------|------------|
| Main System – Maximum Flow – Implement | 280 kPa | 74 gal/min |
| Maximum Pressure – Equipment | 35 000 kPa | 5,076 psi |
| Maximum Pressure – Swing | 31 000 kPa | 4,496 psi |
| Maximum Pressure – Travel | 35 000 kPa | 5,076 psi |

Swing Mechanism

| | | |
|----------------------|-----------|---------------|
| Maximum Swing Torque | 43.4 kN-m | 32,116 ft-lbf |
| Maximum Swing Speed | 9.2 r/min | |

Machine Weight

| | | |
|--------------------------|-----------|-----------|
| Operating Weight Maximum | 19 500 kg | 42,990 lb |
| Operating Weight Minimum | 19 000 kg | 41,890 lb |

Operating weight includes medium stick, 4000 kg (8,800 lb) counterweight, full fuel tank, operator, 245 kg (500 lb) quick coupler, 695 kg (1,500 lb) bucket and dual pneumatic tires. Weight varies depending on configuration.

Service Refill Capacities

| | | |
|-----------------------------------|-------|-----------|
| Cooling System | 37 L | 9.6 gal |
| Final Drive | 2.5 L | 0.7 gal |
| Fuel Tank | 385 L | 101.7 gal |
| Hydraulic System – Including Tank | 270 L | 71 gal |
| Hydraulic Tank | 170 L | 44.9 gal |

Dimensions

| | | |
|------------------------------|--|---------|
| Boom | 5350 mm (17'7") | |
| Bucket | GD 0.91 m ³ (1.19 yd ³) | |
| Stick | 2.5 m (8'2") | |
| Counterweight Clearance | 1280 mm | 4.2 ft |
| Shipping Height – Top of Cab | 3300 mm | 10.8 ft |
| Shipping Length | 8960 mm | 29.4 ft |
| Tail Swing Radius | 2565 mm | 8.4 ft |

Working Ranges and Forces

| | | |
|-----------------------------|--|---------|
| Boom Type | One-Piece Boom | |
| Bucket | GD 0.91 m ³ (1.19 yd ³) | |
| Stick | 2.5 m (8'2") | |
| Digging Height | 8940 mm | 29.3 ft |
| Dump Height | 6140 mm | 20.2 ft |
| Reach at Ground Level | 9295 mm | 30.5 ft |
| Vertical Wall Digging Depth | 3935 mm | 12.9 ft |

Range values are calculated with a bucket (1200GD-CW30) (0.91 m³/1.19 yd³) with TIP GP-GEN DUTY (K80) and CW-30 quick coupler with a tip radius of 1535 mm (5'5").

Air Conditioning System

The air conditioning system on this machine contains the fluorinated greenhouse gas refrigerant R134a (Global Warming Potential = 1430). The system contains 0.85 kg of refrigerant which has a CO₂ equivalent of 1.216 metric tonnes.

Drive

| | | |
|----------------------|---------|-----------|
| Maximum Travel Speed | 37 km/h | 23 mile/h |
|----------------------|---------|-----------|

STANDARD & OPTIONAL EQUIPMENT

NOTE: Standard and optional equipment may vary. Consult your Cat dealer for details.

| | Standard | Optional | | Standard | Optional |
|--|----------|----------|---|----------|----------|
| UNDERCARRIAGE AND STRUCTURES | | | ELECTRICAL SYSTEM | | |
| Creeper speed/ four wheel drive | ✓ | | Alternator, 75 A | ✓ | |
| Heavy-duty axles, advanced disc brake system and travel motor, adjustable braking force | ✓ | | Boom working light | ✓ | |
| Parking brake | ✓ | | Cab mounted working lights, front and rear | ✓ | |
| Oscillating front axle, lockable, with remote greasing point | ✓ | | Rooding and indicator lights, front and rear | ✓ | |
| Full hydraulic steering with emergency capability | ✓ | | Main shut-off switch | ✓ | |
| Steps with tool box in undercarriage (left and right) | ✓ | | Maintenance free batteries | ✓ | |
| Two-piece drive shaft | ✓ | | Electrical refueling pump | | ✓ |
| Two speed hydrostatic transmission | ✓ | | SERVICE AND MAINTENANCE | | |
| Counterweight (4000 kg/8818 lb) | ✓ | | Scheduled Oil Sampling (S-O-S SM) ports | ✓ | |
| 10.00-20 dual tires | | ✓ | Caterpillar Datalink and Electronic Technician capability | ✓ | |
| 10.00-20 dual pneumatic tires with road profile | | ✓ | Door locks and cab locks with Caterpillar one-key security system | ✓ | |
| Rear blade (parallel)/front outrigger undercarriage | | ✓ | HYDRAULIC SYSTEM | | |
| Rear outrigger/front blade (parallel) undercarriage | | ✓ | Heavy lift mode | ✓ | |
| BOOM AND STICKS | | | Separate dedicated swing pump | ✓ | |
| One-Piece Boom | | ✓ | Stick regeneration circuit | ✓ | |
| 2.5 m (8'2") stick | | ✓ | Variable displacement, load sensing hydraulic system | ✓ | |
| 2.8 m (9'2") stick | | ✓ | Automatic swing brake | ✓ | |
| Bucket linkage with diverter valve | | ✓ | Capability to add auxiliary hydraulic circuits | ✓ | |
| CAT TECHNOLOGIES | | | Cat XT-6 ES hoses | ✓ | |
| Cat Product Link™ | ✓ | | Adjustable hydraulic sensitivity | ✓ | |
| ENGINE | | | Oil cooler | ✓ | |
| Cat C7.1 Single Turbo diesel engine – meets U.S. EPA Tier 4 Final and EU Stage emission standards. | ✓ | | Anti-drift valve for bucket cylinder | ✓ | |
| Power mode selector | ✓ | | Hydraulic mineral oil, Cat HYDO™ advanced 10 oil | ✓ | |
| Air filter/fuel filter | ✓ | | Load sensing hydraulic system | ✓ | |
| Automatic engine speed control | ✓ | | SAFETY AND SECURITY | | |
| Automatic starting aid | ✓ | | Camera mounted on counterweight | ✓ | |
| Work up to 3000 m (9,842 ft) above sea level without engine power de-rating | ✓ | | Mirrors, frame and cab | ✓ | |
| Fuel/water separator with level indicator | ✓ | | Travel alarm | ✓ | |
| Muffler | ✓ | | Signal/warning horn | ✓ | |
| | | | Rotating beacon on cab and chassis | | ✓ |

For more complete information on Cat products, dealer services and industry solutions, visit us on the web at www.cat.com.

© 2024 Caterpillar. All Rights Reserved.

VisionLink is a trademark of Caterpillar Inc., registered in the United States and in other countries.

Materials and specifications are subject to change without notice. Featured machines in photos may include additional equipment. See your Cat dealer for available options.

CAT, CATERPILLAR, LET'S DO THE WORK, their respective logos, SmartBoom, S·O·S, Product Link, "Caterpillar Corporate Yellow," the "Power Edge" and Cat "Modern Hex" trade dress as well as corporate and product identity used herein, are trademarks of Caterpillar and may not be used without permission.
www.cat.com www.caterpillar.com

AEXQ3720-00
Build Number: 04B
(S Am, Indonesia, Afr-ME)

