



# CAT<sup>®</sup> ATTACHMENTS FOR AGRICULTURE.

TOOLS AT THE HEART OF AGRICULTURE



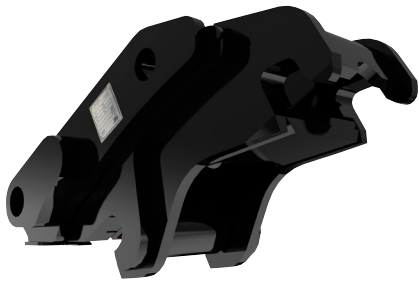
# CAT<sup>®</sup> ATTACHMENTS FOR AGRICULTURE.

TOOLS AT THE HEART OF AGRICULTURE

<b>Coupler Solutions</b> .....	3
<b>Augers</b> .....	4
<b>Bale Grab</b> .....	5
<b>Bale Spears (Dual &amp; Single)</b> .....	6
<b>Brooms</b>	
Angle .....	7
Pick Up Brooms .....	8
Utility Brooms .....	9
<b>Brushcutters</b> .....	10
<b>Buckets</b>	
General-Purpose .....	11
Heavy Duty .....	12
Light Material Buckets .....	13
Material-Handling Buckets .....	14
Multi-Purpose Buckets .....	15
Side Discharge Buckets .....	16
Utility Grapple Buckets .....	17
<b>Material-Handling Arms</b> .....	18
<b>Mulchers</b> .....	19
<b>Pallet Forks</b> .....	20
<b>Rakes</b>	
Landscape Rakes .....	21
Power Box Rakes .....	22
<b>Stump Grinders</b> .....	23
<b>Thumbs</b> .....	24
<b>Tillers</b> .....	25
<b>Trenchers</b> .....	26
<b>Utility Grapple Forks</b> .....	27

# COUPLER SOLUTIONS

FIND THE COUPLERS FOR BHL, MHEX, LOADERS



## DUAL LOCK PIN GRABBER COUPLER

### Our Dual Lock™ Pin Grabber Couplers

allow operators to change attachments in seconds, increasing job efficiency and enabling one machine to do multiple tasks. We offer two, easy-to-use options: hydraulic (controlled from the cab) and mechanical. And all Cat models include primary and secondary locking systems to ensure what you put on your machine, stays on.



## HYDRAULIC LOCK COUPLER



## FUSION COUPLER FOR LOADER

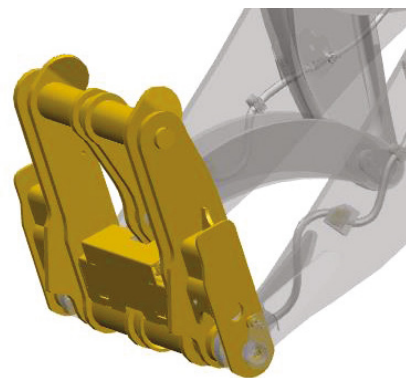
### Fusion coupler sits back close to the loader arms, minimizing offset

enabling increased machine performance. Optimal visibility in combination with the machine linkage makes it easier and safer to engage and disengage attachments. The Advanced wedge mechanism creates a tight, rattle-free fit, eliminating play and wear resulting in a long service life. Attachment exchangeability among a wide Cat loader range.

## IT COUPLER

### Cat® designed coupler for mixed fleets.

Combine different machine products (backhoe loader, compact wheel loader and telehandler) with the same coupler for specific attachments. Also known as Integrated Tool Carrier Coupler, Standard Coupler, IT14/28"



## VERTICAL PIN COUPLER

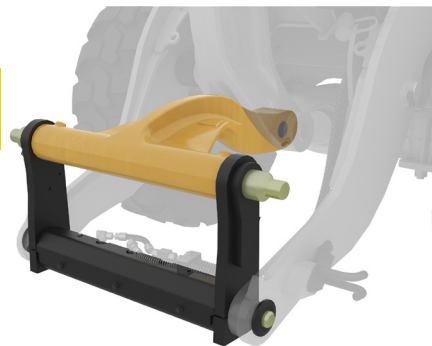
### The Vertical Pin Coupler allows the use of many Cat® skid steer loader work tools

Using either the standard or high flow auxiliary line hydraulic option, this coupler allows the M Series Compact Wheel Loaders to work with skid steer loader attachments.

## HORIZONTAL PIN LOCK (HPL-ISO)

### Horizontal Pin Lock is compatible with many other work tools

Yields optimum performance for compatible machines due to zero offset. This optimizes the load capacity and breakout forces. Also compatible with work tools from other manufacturers.



## INTERFACE BRACKET SOLUTION ADDITIONAL HPL (L35)

### Adds even more versatility to Cat® compact wheel loaders

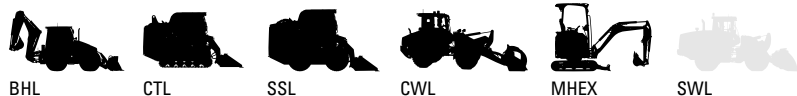
enabling a defined range of IT and SSL interface attachments to be used. An easy solution to maximize machine utilization into different segments and applications.

Skid Steer/Compact Track Loader work tools can be used with certain Compact Wheel Loader (CWL) models when the ISO coupler is equipped with an Interface Bracket Solution.



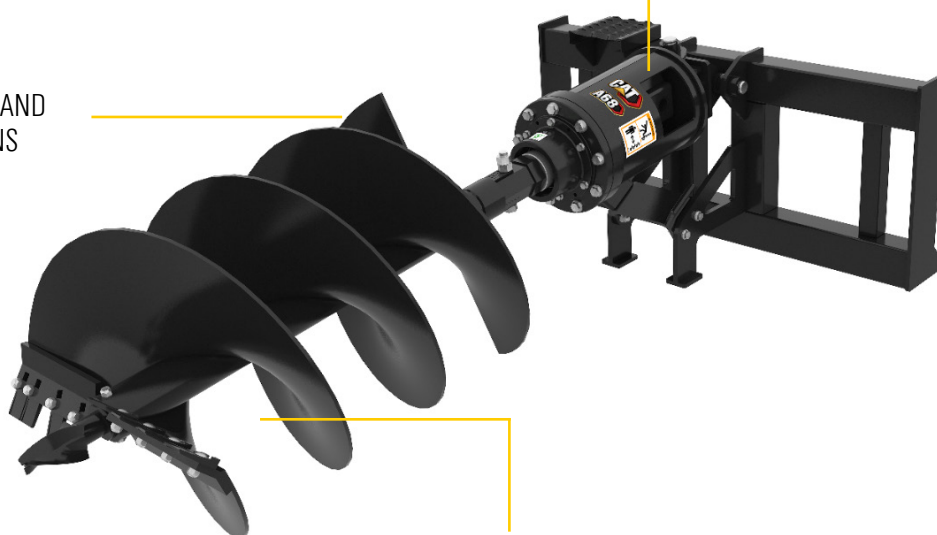
# AUGERS

COMPATIBLE WITH



DIFFERENT SPEED AND TORQUE OPTIONS

DRILL WITH BETTER EFFICIENCY.



SELECT FROM A RANGE OF AUGER BITS



Auger drive



## Drill with better efficiency.

Our augers offer different speed and torque options for work in a variety of soils. We've engineered their speed to extract soil efficiently and their torque to prevent stalling in dense ground. Select from a range of auger bits.

## SPECIFICATIONS

Attachment	Compatibility	Drive Shaft Torque @ Max Pressure		Drive Method
		Nm	(lb ft)	
<b>Models</b>				
A11	MHEX (1-2t)	1105	(815)	Direct Drive
A23	SSL, CTL, CWL, MHEX (2-3t)	2304	(1699)	Direct Drive
A41	SSL, CTL, CWL	4118	(3037)	Single Planetary
A41	MHEX (3-5t)	4120	(3039)	Single Planetary
A68	SSL, CTL, CWL, MHEX (5-8t)	6826	(5035)	Double Planetary
A68	BHL	6829	(5038)	Double Planetary

BHL: Backhoe Loader      SSL: Skid Steer Loader  
CTL: Compact Track Loader      CWL: Compact Wheel Loader  
MHEX: Mini Excavator

Certain models within the family of machines listed may not be compatible with the attachment. Please consult your Cat dealer for further information.

**Other Core Industries:** Agriculture/ Construction.

**Application 1:** Work in a variety of soils.

**Application 2:** Their speed was engineered to extract soil efficiently and their torque to prevent stalling in dense ground.



# BALE GRAB

## COMPATIBLE WITH



GREATER PRECISION



CARRYING AND PLACING  
LARGE BALED MATERIALS

COMES WITH  
HARDENED PINS



Top



Back



Side



Front



## Grab baled material with greater precision.

Use our bale grabs for grasping, carrying and placing large baled materials. Their tubular arms eliminate damage to the wrapping or bale itself, while the rigid, high-strength steel frame extends working life. This attachment also comes with hardened pins and easily accessible grease points for greater productivity and a bolt-on step for safer cab access.

## SPECIFICATIONS

Attachment	Compatibility	Weight		Maximum opening width		Internal width w/ closed arms	
		kg	(lb)	mm	(in)	mm	(in)
1803 mm (71 in)	CTL, SSL, CWL	261	575	1803	71	940	37
2133 mm (84 in)	CTL, SSL, CWL	263	580	2133	84	918	36

SSL: Skid Steer Loader  
CWL: Compact Wheel Loader  
CTL: Compact Track Loader

Certain models within the family of machines listed may not be compatible with the attachment. Please consult your Cat dealer for further information.



BALE GRAB ON SSL.



BALE GRAB ON CWL.

**Subtaeogrie:** Feeding.

**Aplication 1:** Transport Bales of wheat, hay and other light materials.

**Aplication 2:** Grasping, transporting and place large bale materials in various positions.

# BALE SPEARS

## DUAL AND SINGLE

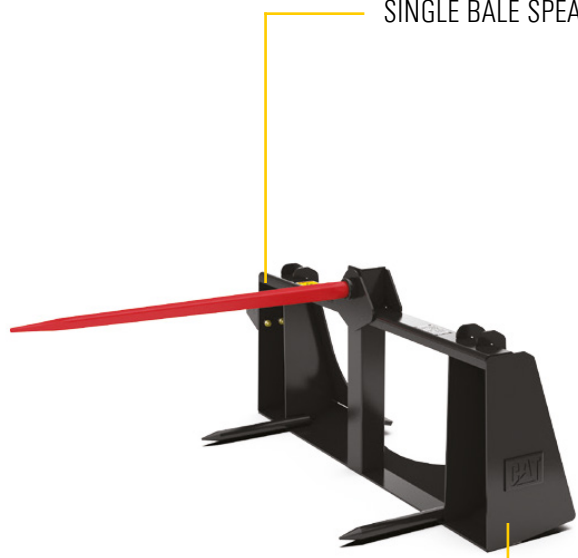
COMPATIBLE WITH



DUAL BALE SPEARS



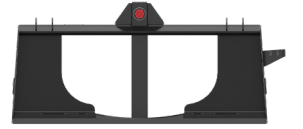
SINGLE BALE SPEARS



IDEAL FOR REMOVING OR PLACING BALES IN A STACK



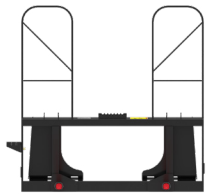
Single Bale Spears side



Single Bale Spears back



Dual Bale Spears side



Dual Bale Spears back

### Make moving bales simple.

Select from our single or dual spear design, both ideal for removing or placing bales in a stack. Our single-spear models include stabilizers and dual-spear models feature a high backrest for large loads. Spears are easily replaced and frames offer a bolt-on step.

### SPECIFICATIONS

Attachment	Compatibility	Overall Width		Weight	
		mm	(in)	kg	(lb)
990 mm (39 in) Single Tine	CTL, SSL, CWL	1285	(51)	70	(154)
990 mm (39 in) Dual Tine	CTL, SSL, CWL	1407	(55)	118	(260)
1245 mm (49 in) Single Tine	CTL, SSL, CWL	1285		72	(159)
1245 mm (49 in) Dual Tine	CTL, SSL, CWL	1407	(55)	121	(267)

CTL: Compact Track Loader      CWL: Compact Wheel Loader  
 SSL: Skid Steer Loader

Certain models within the family of machines listed may not be compatible with the attachment. Please consult your Cat dealer for further information.



DUAL BALE GRAB ON SSL.



SINGLE BALE GRAB ON SSL.

Subcategorie: Feeding.

Application 1: Transport around bales of wheat, hay, other livestock feed, bedding, etc.



# ANGLE BROOMS

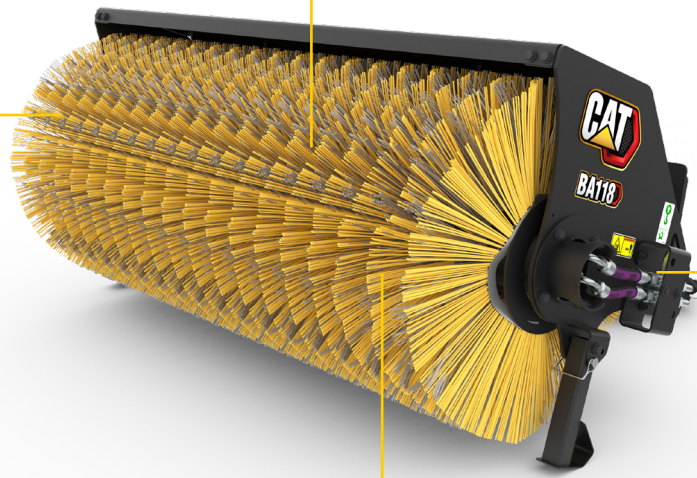
## COMPATIBLE WITH



DURABLE, RELIABLE DESIGN

SWEEPING VERSATILITY

UNIQUE SUSPENSION SYSTEM



QUICK CHANGE ANGLING



Angle broom left side



Angle broom right side



## Cat® Angle brooms

Angle Brooms use a windrowing action to move loose debris ahead and to the side of the surface being swept. They can be oriented straight or angled up to 30° left or right of center in forward travel.

### SPECIFICATIONS

Attachment Models	Compatibility	Sweeping Width		Brush Diameter	
		mm	(in)	mm	(in)
BA118 (Manual & Hydraulic)	SSL, CTL, CWL	1800	(70.9)	815	(32)
BA121 (Manual & Hydraulic)	SSL, CTL, CWL	2100	(82.7)	815	(32)
BA25 (Manual & Hydraulic)	BHL, CWL, SWL	2500	(98)	700	(28)
BA30 (Manual & Hydraulic)	SWL	2997	(118)	915	(36)
SA25 (Hydraulic)	SWL	2500	(98)	915	(36)
SA30 (Hydraulic)	SWL	3000	(118)	915	(36)

BHL: Backhoe Loader

CTL: Compact Track Loader

CWL: Compact Wheel Loader

SSL: Skid Steer Loader

SWL: Small Wheel Loader

Certain models within the family of machines listed may not be compatible with the attachment. Please consult your Cat dealer for further information.



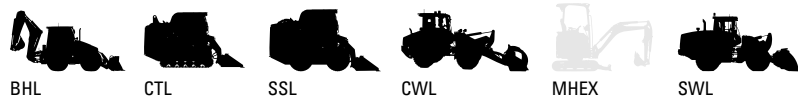
ANGLE BROOM IN ACTION

**Application 1:** Used for clearing parking lots, industrial plants, mill yards, airport runways, streets, driveways and lanes.

**Application 2:** Added protection from the hood. They can be oriented straight or angled up to 30° left or right of center in forward travel.

# PICK UP BROOMS

## COMPATIBLE WITH



DURABLE, RELIABLE DESIGN



BI-DIRECTIONAL CAPABILITIES ALLOW TO SWEEP FORWARD AND IN REVERSE

INTEGRATED, EASY TO EMPTY HOPPER



BP115C



With Optional Gutter Brush Kit

BP118C



BP25

## Cat® Pick up brooms

Pickup Brooms sweep and deposit material into an integrated hopper bucket for easy removal and dumping. Bi-directional capabilities of the bristles allow Pickup brooms to sweep in forward or reverse machine travel. Optimum sweeping style is in forward travel, resulting in over-the-brush pickup. Certain conditions require a dust pan style of sweeping, done in reverse travel.

## SPECIFICATIONS

Attachment	Compatibility	Sweeping Width		Brush Diameter		Coupler Interface
		mm	(in)	mm	(in)	
BP115C	CTL, CWL, SSL	1524	(60)	660	(26)	SSL
BP118C	CTL, CWL, SSL	1829	(72)	660	(26)	SSL
BP25	BHL, SWL, CWL	2500	(98)	700	(27.5)	IT/Fusion™/ISO*

BHL: Backhoe Loader      SSL: Skid Steer Loader      \*Requires hook group (sold separately)  
 CTL: Compact Track Loader      SWL: Small Wheel Loader  
 CWL: Compact Wheel Loader      IT: Integrated Tool Carrier

Certain models within the family of machines listed may not be compatible with the attachment. Please consult your Cat dealer for further information.

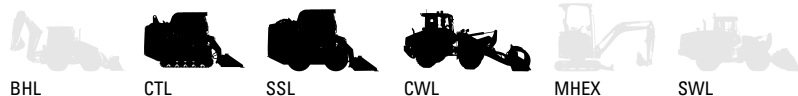
**Application 1:** Capture and contain material from surfaces. Built to clean and sweep any surface.  
**Application 2:** Sweep and deposit materials into an integrated hopper for easy removal and dumping.





# UTILITY BROOMS

## COMPATIBLE WITH



HIGH STRENGTH STEEL AND CURVED HOOD DESIGN



ADJUST FOR GREATER BRISTLE DOWN FORCE

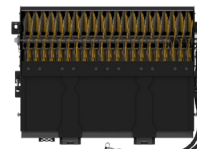
LARGE HOPPER CAPACITY



Utility Broom Back



Utility Broom Right Side



Utility Broom Bottom



Utility Broom Front



Utility Broom Left Side

## Cat® Utility brooms

Utility Brooms sweep and collect light debris on smooth surfaces in forward or reverse travel. They can be adjusted for greater bristle down-force in tough applications such as sweeping course material out of a cold planer cut.

## SPECIFICATIONS

Attachment	Compatibility	Sweeping Width		Height		Weight	
		mm	(in)	kg	(lb)	kg	(lb)
BU115	SSL, CTL, CWL	1500	(59)	793	(31)	430	(948)
BU118	SSL, CTL, CWL	1800	(71)	793	(31)	485	(1069)
BU121	SSL, CTL	2100	(83)	793	(31)	539	(1188)

SSL: Skid Steer Loader  
 CWL: Compact Wheel Loader  
 CTL: Compact Track Loader

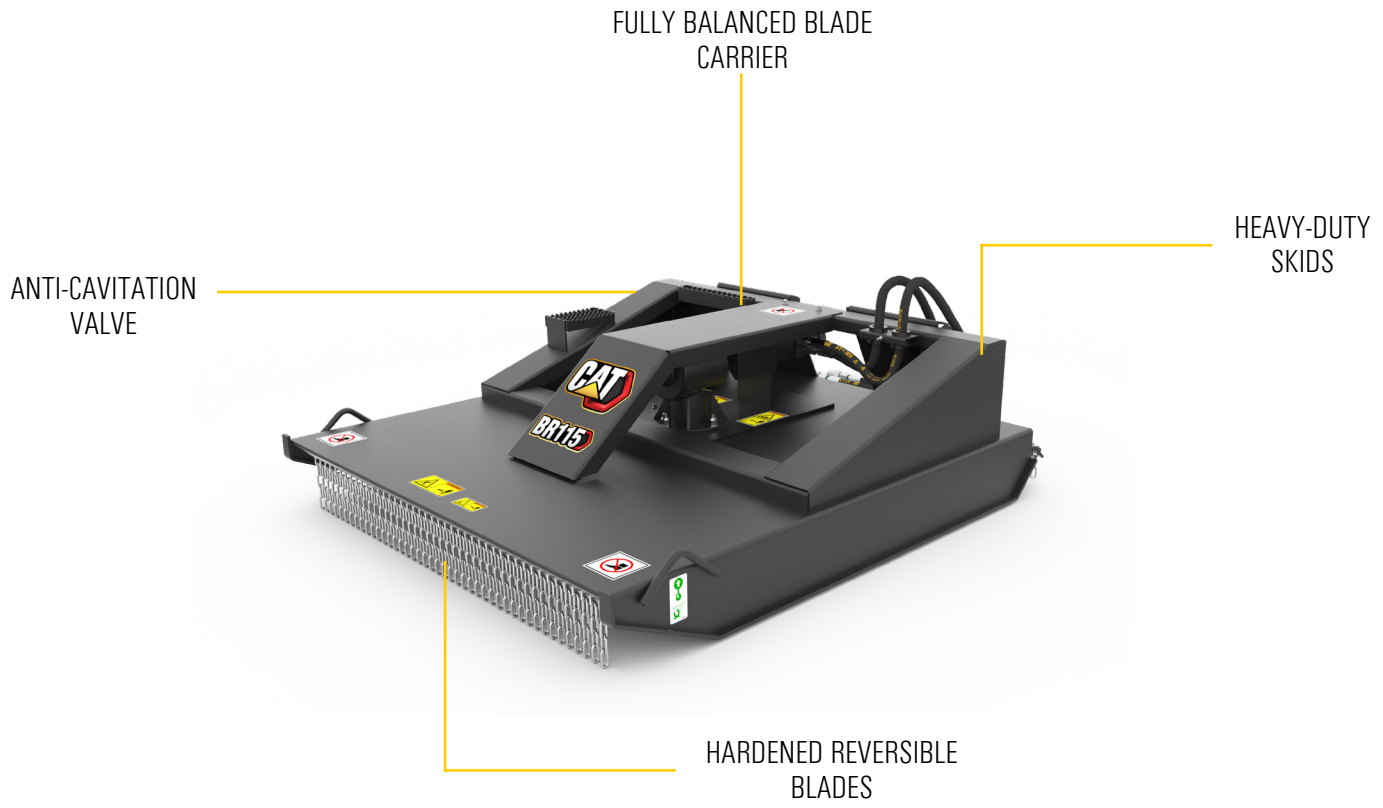
Certain models within the family of machines listed may not be compatible with the attachment. Please consult your Cat dealer for further information.

**Other Core Industries:** Construction, Landscaping.

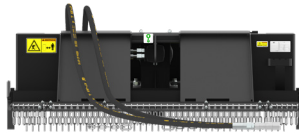
**Application 1:** Recommended for spoil removal during cold planing applications.

# BRUSHCUTTERS

## COMPATIBLE WITH



Brushcutter left side



Brushcutter Rear



Brushcutter Right side

### Clear overgrowth effectively.

Reduce vegetation, brush and trees with an 80 mm (3 in) diameter or less into a coarse byproduct. Select from a range of lengths and widths.



## SPECIFICATIONS

Attachment Models	Compatibility	Overall Width		Tip Speed		Unit Weight	
		mm	(in)	m/min	(fpm)	kg	lb
BR115	SSL, CTL	1575	(61)	3987-4821	(13080-15816)	426	(939)
BR117	SSL, CTL	1727	(68)	2910-4442	(9547-14572)	462	(1019)
BR118	SSL, CTL	1880	(74)	3175-4845	(10415-15897)	533	(1175)
BR120	SSL, CTL	2025	(80)	3417-5246	(11210-17211)	527	(1162)
BR318*	SSL, CTL	1880	(74)	3998-5198	(13118-17054)	502	(1107)
BR320*	SSL, CTL	2025	(80)	4332-5631	(14212-18475)	527	(1162)

CTL: Compact Track Loader

SSL: Skid Steer Loader

\*High flow option needed

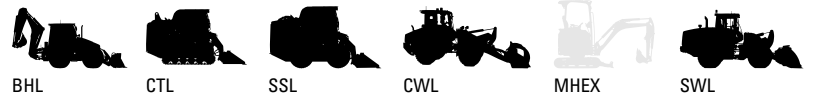
Certain models within the family of machines listed may not be compatible with the attachment. Please consult your Cat dealer for further information.

**Application 1:** Designed for land management, utilities, site prep and maintenance work for brush, small trees and dense vegetation.



# GENERAL-PURPOSE BUCKETS

## COMPATIBLE WITH



EASY TO OPERATE

LOAD MORE MATERIAL,  
BURN LESS FUEL



DURABILITY OPTIONS



General purpose bucket side



General purpose bucket bottom



General purpose bucket for SSL & CTL with bolt-on teeth



General purpose bucket for SSL & CTL



## Cat® buckets

Are more than accessories, they are designed as an extension of your Cat loader. Every model is matched to specific Cat machines, giving you better fill, reduced fuel burn, and increased payloads. We build them to make you more productive in whatever task you need to do.

## SPECIFICATIONS

Attachment Models	Compatibility	Width Range		Capacity Range	
		mm	(in)	kg	(lb)
General Purpose	BHL	2262-2434	(89-96)	0.76-1.5	(1.0-2.0)
General Purpose	CTL, SSL, CWL*	1576-2188	(62-86)	0.36-0.63	(0.47-0.82)
General Purpose Performance Series	SWL	2550-2750	(100-108)	1.9-2.9	(2.5-3.8)

SSL: Skid Steer Loader  
 \*CWL: Compact Wheel Loader – certain CWL models require Vertical Pin/ISO coupler.  
 BHL: Backhoe Loader  
 CTL: Compact Track Loader  
 SWL: Small Wheel Loader

Certain models within the family of machines listed may not be compatible with the attachment. Please consult your Cat dealer for further information.



GENERAL PURPOSE BUCKET ON SWL



GENERAL PURPOSE BUCKET ON SWL

**Application 1:** Ideal for digging in low-impact, moderately abrasive materials such as dirt, loam, gravel and clay.



# HEAVY DUTY BUCKETS

## COMPATIBLE WITH



VERSATILITY AND  
CONVENIENCE WITH  
COUPLERS

HIGH PERFORMANCE

BOOST EFFICIENCY  
AND PRODUCTIVITY

RELIABILITY AND DURABILITY



Heavy Duty Bucket side



Heavy Duty Bucket front



Heavy Duty Bucket front



Heavy Duty Bucket



## Move harsh soils with minimal wear.

Dig, trench or backfill with our heavy duty buckets. They're made to excavate in abrasive soils and move large loads. Select from a range of bucket sizes and teeth.

## SPECIFICATIONS

Attachment	Compatibility	Width Range		Capacity Range	
		mm	(in)	m <sup>2</sup>	(yd <sup>3</sup> )
Heavy Duty	MHEX	305-914	(12-36)	0.05-0.39	(0.065-0.51)
Heavy Duty Capacity	MHEX	305-914	(12-36)	0.082-0.300	(0.107-0.392)
Heavy Duty Rock	MHEX	330-762	(13-30)	0.23-0.31	(0.30-0.405)
Heavy Duty	BHL	305-914	(12-36)	0.08-0.44	(0.1-0.57)
Heavy Duty Rock	BHL	305-914	(12-36)	0.07-0.33	(0.09-0.43)

BHL: Backhoe Loader

MHEX: Mini Excavator

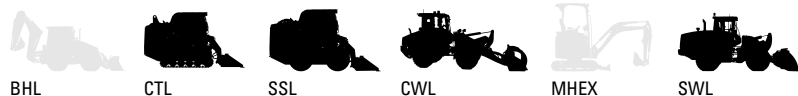
Certain models within the family of machines listed may not be compatible with the attachment. Please consult your Cat dealer for further information.



**Application 1:** Excavate in abrasive soils and move large loads.

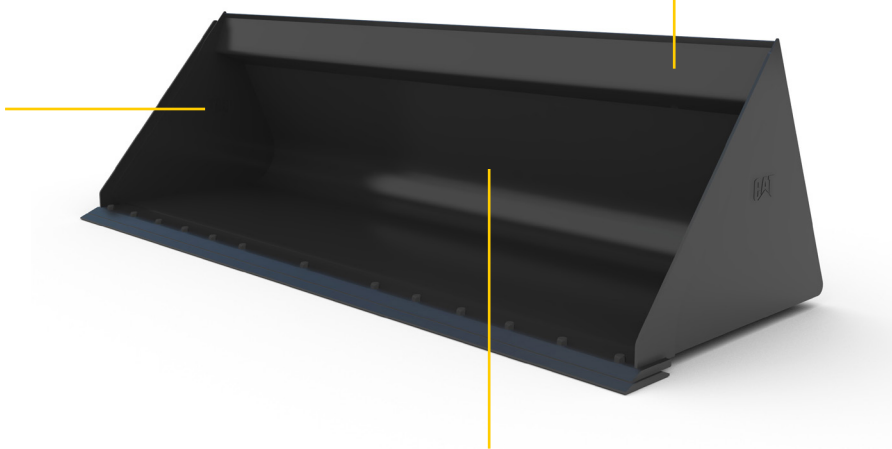
# LIGHT MATERIAL BUCKETS

COMPATIBLE WITH



USE 100% OF YOUR LOADER'S POWER

24/7/365 VERSATILITY



MOVE MORE IN LESS TIME



Light material bucket front



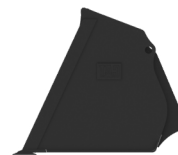
Light material bucket bottom



Light material bucket side



Light material bucket back



Light material bucket side



## Move more in a single scoop.

Our light material buckets are designed to move high volumes of low-density material such as bedding, dry topsoil, fertilizer, feed and snow.

### SPECIFICATIONS

Attachment Models	Compatibility	Overall Width		Capacity Range	
		mm	(in)	m <sup>3</sup>	(yd <sup>3</sup> )
Light Material	CTL, SSL, CWL*	1883-2490	(74-98)	0.69-1.55	(0.9-2.0)
Light Material	SWL	2750	(108)	3.10-5.5	(4.00-7.20)

CTL: Compact Track Loader      SSL: Skid Steer Loader  
 \*CWL: Compact Wheel Loader – certain CWL models require Vertical Pin /ISO coupler.      SWL: Small Wheel Loader

Certain models within the family of machines listed may not be compatible with the attachment. Please consult your Cat dealer for further information.



LIGHT MATERIAL FOR LOADERS



LIGHT MATERIAL BUCKET FOR SSL

**Subcategorie:** Feeding.

**Application 1:** Removes high volumes of low density materials such as fertilizer, feed or dry topsoil.

**Application 2:** Can be used to clear pathways on farm field.



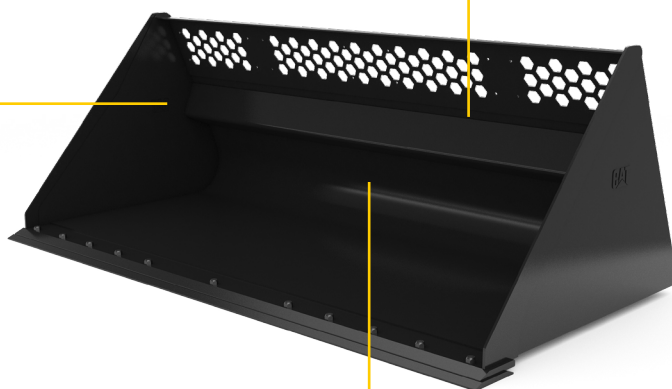
# MATERIAL-HANDLING BUCKETS

COMPATIBLE WITH

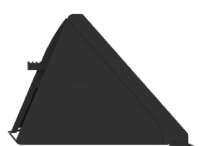


CAT GROUND ENGAGING TOOLS (G.E.T.)

OPTIMIZED BUCKET DESIGN



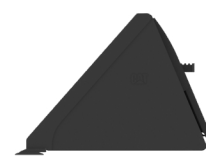
PROVIDE SUPERIOR PRODUCTIVITY AND HIGH RELIABILITY



Material-Handling Buckets side



Material-Handling Buckets front



Material-Handling Buckets side



## Cat® Material-Handling Buckets

Highest capacity buckets, designed with honeycomb hole pattern which allows direct visibility to the bucket cutting edge. Excellent for light density material movement such as snow, hay, and mulch.

Available bolt-on serrated cutting edge improves bucket's ability to break up hard packed snow and ice in snow removal applications.

## SPECIFICATIONS

Attachment Models	Compatibility	With Range		Capacity Range	
		mm	(in)	m <sup>3</sup>	(yd <sup>3</sup> )
Material Handling	CTL, SSL	2185-2642	(86-104)	1.07-1.33	(1.40-1.74)

SSL: Skid Steer Loader

CTL: Compact Track Loader

\*CWL: Compact Wheel Loader – 903D can be used with Vertical Pin coupler (also known as skid steer loader coupler)

\*SWL: Small Wheel Loader – can be used with Fusion coupler for buckets with 1.5m<sup>3</sup> (2.0yd<sup>3</sup>) capacity.

Certain models within the family of machines listed may not be compatible with the attachment. Please consult your Cat dealer for further information.



MATERIAL-HANDLING BUCKETS

**Other Core Industries:** Feeding & Waste Management.

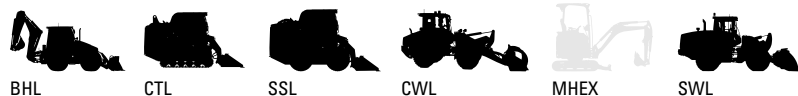
**Application 1:** Ideal for stockpiling, carrying, dumping and backfilling, such as wet and moist materials and used for high capacity applications.

**Application 2:** Safely transport non-uniform materials, as well as carry and plant trees or shrubs.

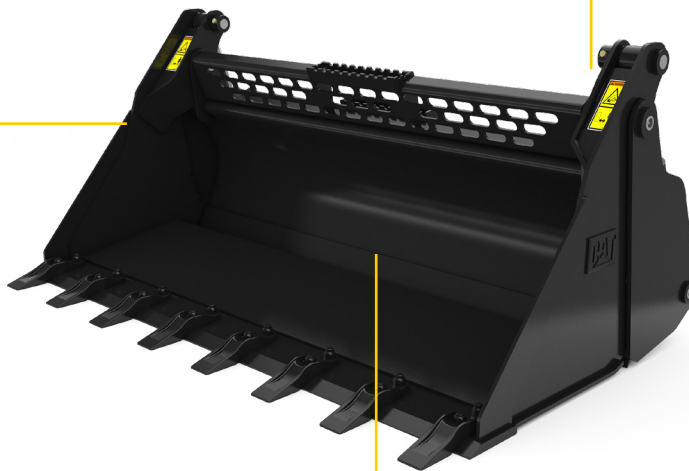


# MULTI-PURPOSE BUCKETS

## COMPATIBLE WITH



EASY TO OPERATE



LOAD MORE MATERIAL,  
BURN LESS FUEL

DURABILITY OPTIONS



Multi-Purpose Bucket Front



## Use one bucket to do the job of many.

Our multi-purpose buckets are one of our most versatile buckets. With a clam design, bolt-on cutting edge and spill guard, they easily doze, grade, level and unload material.

## SPECIFICATIONS

Attachment	Compatibility	Width Range		Capacity Range	
		mm	(in)	m <sup>3</sup>	(yd <sup>3</sup> )
Multi-Purpose	BHL	2262-2434	(88-96)	1.0-1.2	(1.3-1.5)
Multi-Purpose	CTL, SSL, CWL*	1576-2188	(62-86)	0.3-0.43	(0.39-0.56)
Multi-Purpose	SWL	2550-2750	(100-108)	2.1-2.7	(2.7-3.5)

SSL: Skid Steer Loader  
\*CWL: Compact Wheel Loader – certain models can be used with Vertical Pin / ISO.

BHL: Backhoe Loader  
CTL: Compact Track Loader  
SWL: Small Wheel Loader

Certain models within the family of machines listed may not be compatible with the attachment. Please consult your Cat dealer for further information.



MULTI-PURPOSE BUCKET ON CTL



MULTI-PURPOSE BUCKET ON CTL

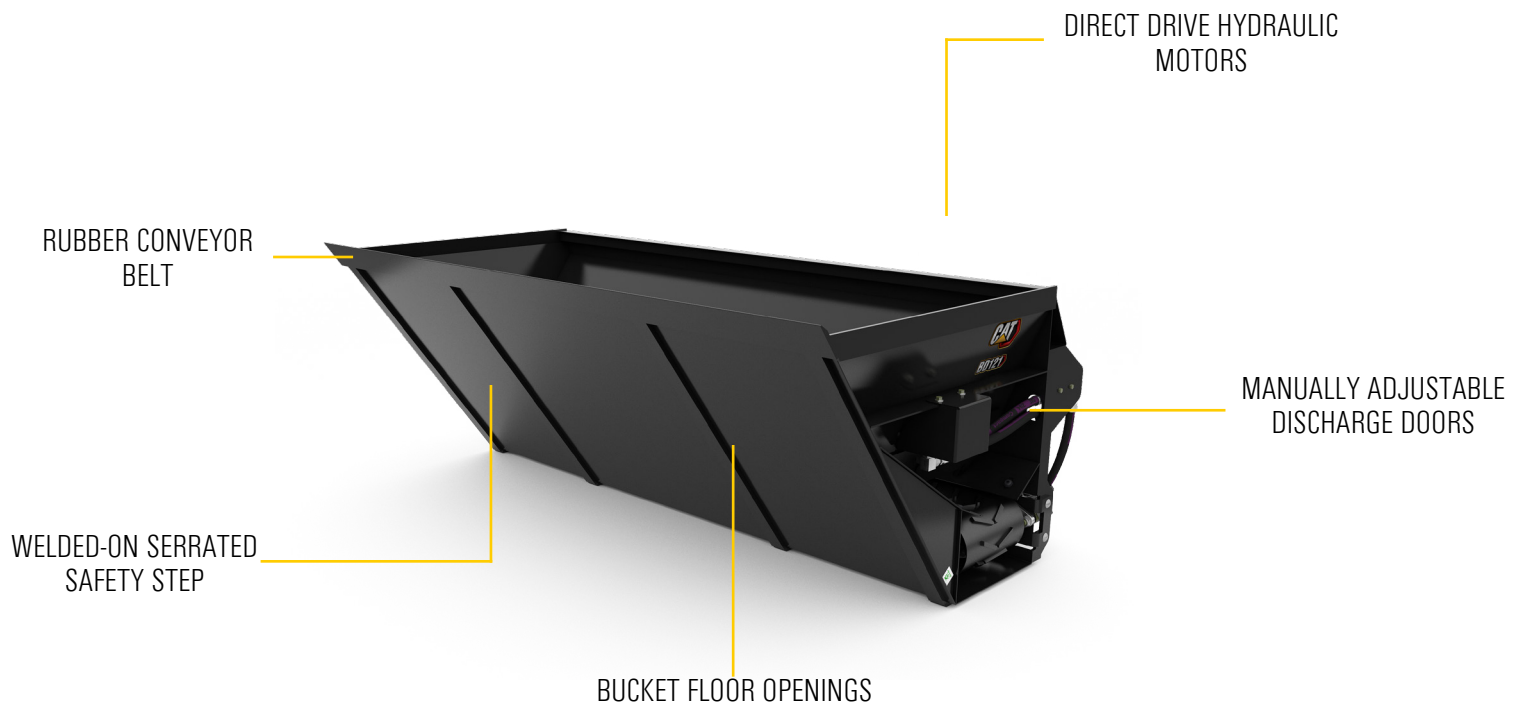
**Other Core Industries:** Waste Management.

**Application 1:** Ideal for material handling, clamping, grading, leveling and grasping irregular shaped objects.

**Application 2:** The tool's versatility allows it to adapt to your specific applications.

# SIDE DISCHARGE BUCKETS

## COMPATIBLE WITH



Side Discharge bucket back



Side Discharge bucket front



Side Discharge bucket left



Side Discharge bucket right



## Side Discharge Buckets.

Cat® Side Discharge Buckets are designed to handle a variety of material management and aggregate distribution needs. Applications suited for this bucket spans many industries including agriculture, land management, landscaping, general construction, road maintenance and material handling. The Side Discharge Bucket effectively collects, transports and discharges sand, sawdust, mulch, feed, pea gravel or top soil into barn stalls, bunks, orchards, trenches or along fence rows.

## SPECIFICATIONS

Attachment Models	Compatibility	Working Width		Capacity Range	
		mm	(in)	m <sup>3</sup>	(yd <sup>3</sup> )
BD118 SAWDUST	SSL, CTL, CWL*	1860	(73)	1.53	(2)
BD121 SAWDUST	SSL, CTL, CWL*	2160	(84)	1.78	(2.3)
BD118 SAND	SSL, CTL, CWL*	1860	(73)	0.76	(1)
BD121 SAND	SSL, CTL, CWL*	2160	(84)	1.02	(1.3)

SSL: Skid Steer Loader  
 \*CWL: Compact Wheel Loader - can be used with Vertical Pin Coupler.  
 CTL: Compact Track Loader

Certain models within the family of machines listed may not be compatible with the attachment. Please consult your Cat dealer for further information.



**Application 1:** Collects and discharges sawdust, mulch, straw and sand into barns, stalls and orchards, backfill topsoil or pea gravel into trenches and spread silage.

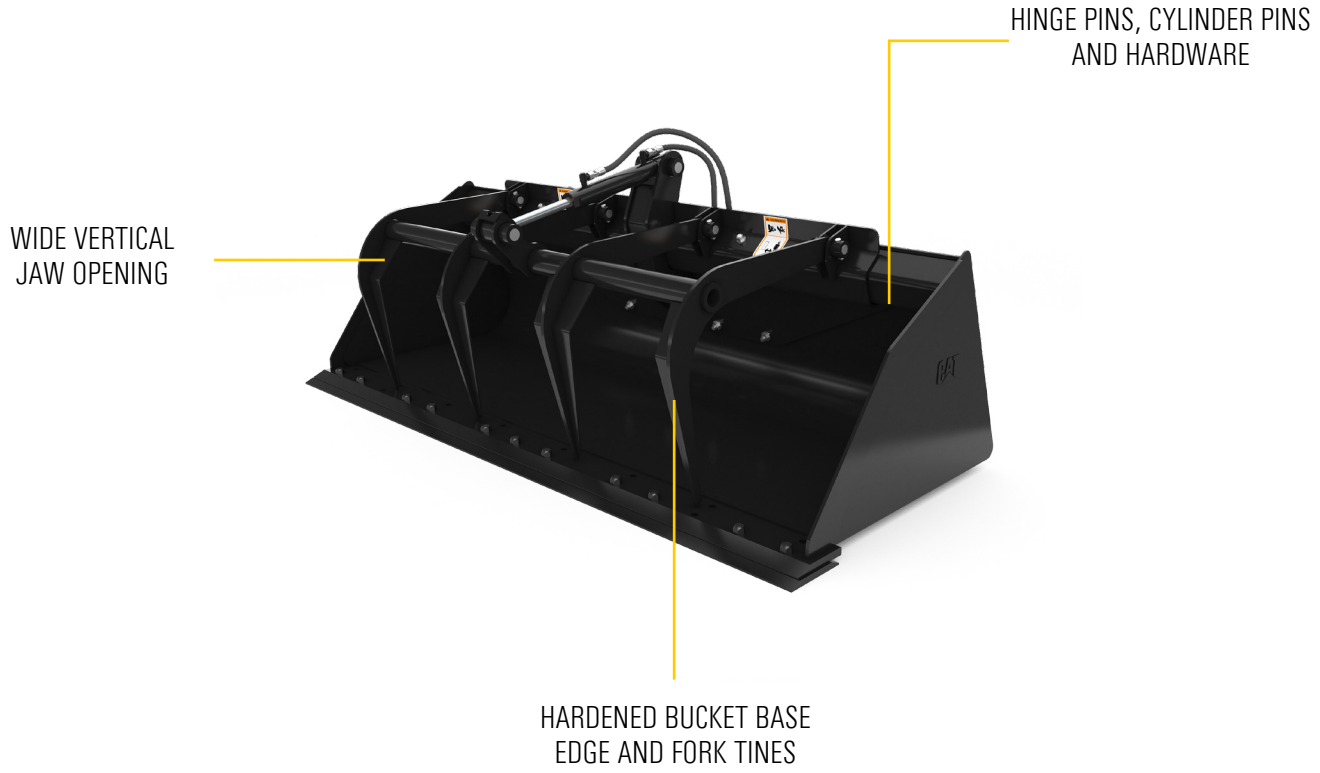
**Application 2:** The left or right discharge design eliminates the need for awkward maneuvering, saving time.



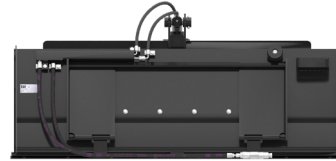


# UTILITY GRAPPLE BUCKET

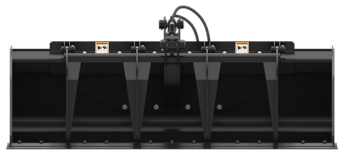
COMPATIBLE WITH



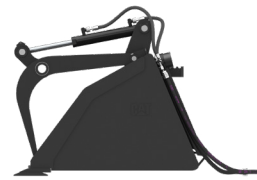
Utility Grapple Bucket side



Utility Grapple Bucket back



Utility Grapple Bucket front



Utility Grapple Bucket side

## Cat® Utility Grapple Bucket

Cat® industrial grapple buckets, rakes and forks are designed to easily handle a wide array of bulky, irregularly shaped objects encountered in demolition, industrial, construction, recycling, storm debris clean-up, landscaping, and other aggressive applications.

## SPECIFICATIONS

Compatibility	Overall Width		Capacity Range		Unit Weight	
	mm	(in)	m <sup>3</sup>	(yd <sup>3</sup> )	kg	(lb)
SSL, CTL	1730	(68)	0.48	(0.63)	365	(805)
SSI, CTL	1883	(74)	0.52	(0.68)	382	(842)

SSL: Skid Steer Loader      CTL: Compact Track Loader

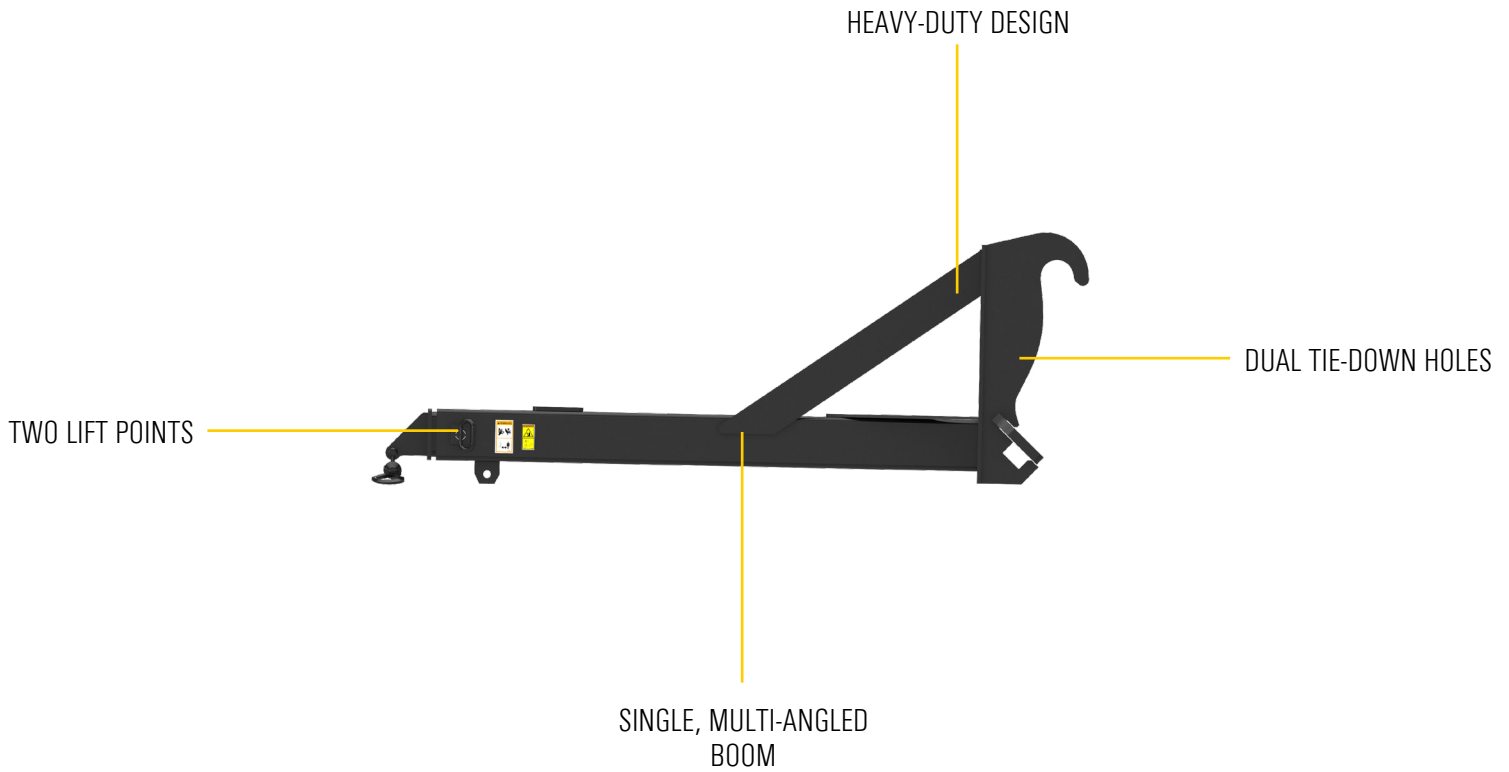
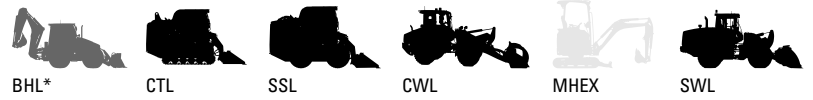
Certain models within the family of machines listed may not be compatible with the attachment. Please consult your Cat dealer for further information.

**Application 1:** Designed for bulky, non-uniform material with heavy-duty tines to hold contents in place.



# MATERIAL-HANDLING ARMS

## COMPATIBLE WITH



Material-Handling arms top



Material-Handling arms bottom



Material-Handling arms side



Material-Handling arms back



## The Cat® Material Handling Arm.

Is a useful tool for virtually all types of applications, including industrial, construction and agricultural, to pick up, carry and load a variety of materials and equipment. The heavy-duty design is also well-suited for landscaping to load, carry and set trees and large shrubs.

## SPECIFICATIONS

Attachment Models	Compatibility	Retracted Length		Extended Length	
		mm	(in)	mm	(in)
Extendible	SWL	2007-2603	(79-103)	3491-4203	(155-166)
		Width w/Side Step		Maximum Reach	
Fixed Length	CTL, SSL, CWL	1319	(52)	2134	(84)
CTL: Compact Track Loader		CWL: Compact Wheel Loader			
SSL: Skid Steer Loader		*BHL: Backhoe Loader – Can be used with IT Quick Coupler			
SWL: Small Wheel Loader					

Certain models within the family of machines listed may not be compatible with the attachment. Please consult your Cat dealer for further information.



# MULCHERS

## COMPATIBLE WITH



Mulcher Left Side



Mulcher right side



## Cat® Mulchers.

Are designed for high performance cutting and mulching of vegetation, saplings, and undergrowth from overgrown agricultural areas and forested terrain. The hydraulic mulchers reduce saplings, shrubs and trees into mulched material, making it ideal for environmental maintenance, such as brush clearing and creating fire lanes.

## SPECIFICATIONS

Attachment Models	Compatibility	Overall Width		Working Width		Weight	
		mm	(in)	mm	(in)	kg	(lb)
HM112*	CTL, SSL, MHEX	1518	(60)	1240	(49)	763	(1682)
HM115*	CTL, SSL, MHEX	1758	(69)	1480	(58)	818	(1803)
HM215**	CTL, SSL, MHEX	1758	(69)	1480	(58)	818	(1803)
HM316**	CTL, SSL	1882	(74)	1582	(62)	1342	(2959)
Available in Bite Limiter Mulchers							
HM416***	CTL, SSL	1882	(74)	1488	(59)	1343	(2961)
Available in Bite Limiter Mulchers							
HM418***	CTL, SSL	2122	(84)	1707	(67)	1450	(3197)
Available in Bite Limiter Mulchers							
HM208	MHEX	1026	(40)	818	(32)	490	(1080)
HM210	MHEX	1226	(48)	1012	(40)	540	(1091)

SSL: Skid Steer Loader

MHEX: Mini Excavator

CTL: Compact Track Loader

\*Requires 377-1579 conversion harness for B/B2/C/C2 series high flow machines plus Turbo Guard Kit and Debris Kit on machine.  
\*\*Requires 371-3725 conversion harness for B/B2/C/C2 series high flow machines plus Turbo Guard Kit and Debris Kit on machine.  
\*\*\*Requires Conversion to screw-to-connect quick disconnects for 299D2 XHP, serial prefix HLM (see M0097141) and 299D3 XE, serial prefix XES/LB3 (see M0110695), plus Turbo Guard Kit and Debris Kit on machine.

Certain models within the family of machines listed may not be compatible with the attachment. Please consult your Cat dealer for further information.



BITE LIMITER MULCHER



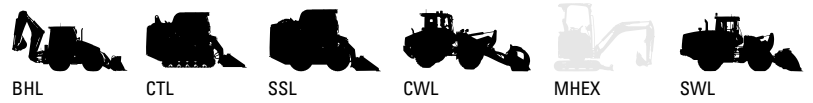
STANDARD DRUM MULCHER

**Application 1:** To shred any underbrush, sapling, shrub or tree up to 200 mm (8 in.) in diameter. Efficient for land reclamation, foliage removal from building construction sites, and shredding pruned material and organic waste for biomass production..

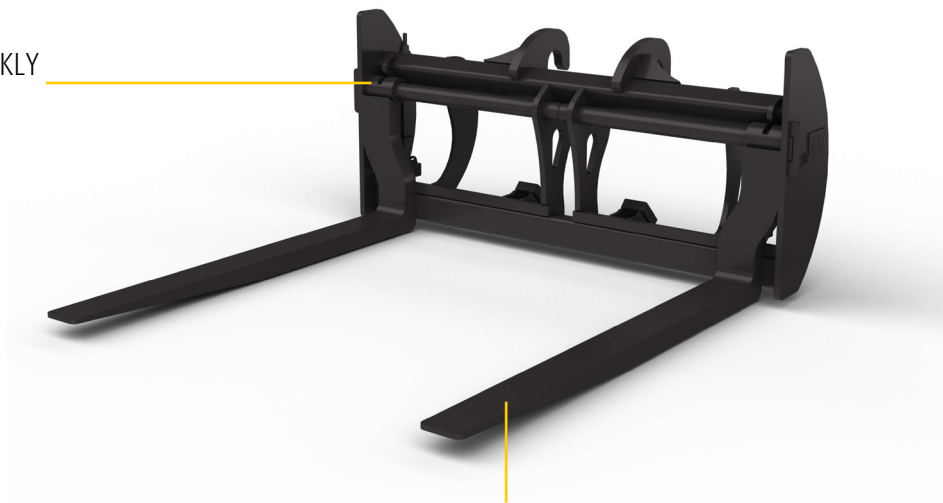
**Application 2:** For high-performance cutting and mulching vegetation and undergrowth.

# PALLET FORKS

## COMPATIBLE WITH



LOAD OR UNLOAD QUICKLY AND EFFICIENTLY



100% COMPLIANT TO ITA CLASS IV STANDARDS



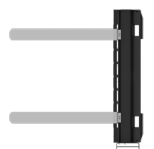
Pallet fork left side



Pallet fork right side



Pallet fork above angle



Pallet fork bottom



## Properly transport palletized materials.

From standard hay bales to stacked feedbags, our pallet forks were designed for stable transportation. Our frame features a tall backboard to secure the load for improved safety and efficiency.

## SPECIFICATIONS

Compatibility	Retracted Length		Extended Length	
	mm	(in)	mm	(in)
BHL	1050-1350	(42-54)	127	(5.0)
CTL, SSL	910-1220	(36-48)	979	(39)
	Tine Length		Carriage Width	
SWL	1220-1524	(48-60)	1566	(62)
CWL	1120-1220	(44-48)	1042-1312	(41-52)

BHL: Backhoe Loader  
 CTL: Compact Track Loader  
 SSL: Skid Steer Loader  
 SWL: Small Wheel Loader  
 CWL: Compact Wheel Loader

Certain models within the family of machines listed may not be compatible with the attachment. Please consult your Cat dealer for further information.



PALLET FORKS ON CWL.



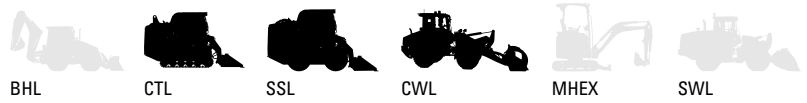
PALLET FORKS ON SSL.

**Subcategorie:** Feeding.

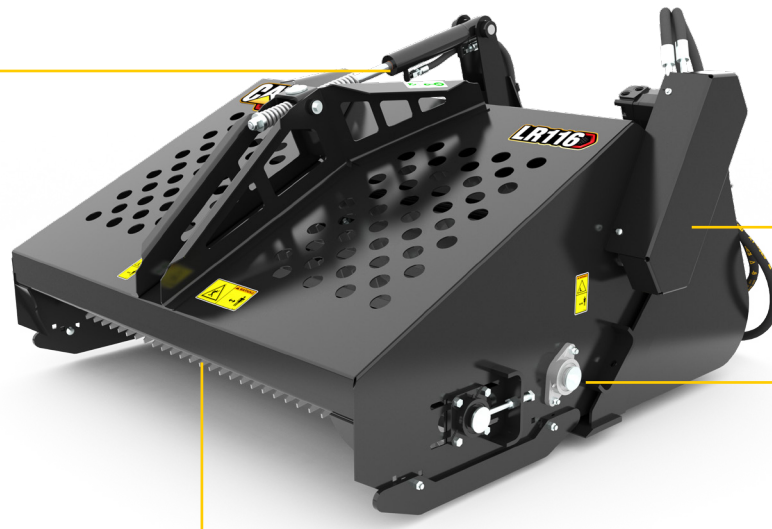
**Application 1:** Designed for stable and secure material transportation.

# LANDSCAPE RAKES

## COMPATIBLE WITH



QUICK DUMPING CAPABILITY



DURABLE CONVEYOR CHAIN

CHAIN REDUCTION DRIVE SYSTEM

HIGH-STRENGTH CARBON STEEL TEETH



Landscape Rakes front



Landscape Rakes top



Landscape Rakes left side



Landscape Rakes right side

### Make moving bales simple.

Cat® Landscape Rakes are ideal for residential, commercial, agricultural, building construction, lawn care and golf course maintenance applications. They use the scarifying action of the hardened teeth to pulverize, aerate, level and condition the soil, while collecting and depositing rock and debris in the integrated hopper bucket for quick removal. Landscape rakes are designed to operate with the loader traveling in reverse, leaving the soil finely groomed with minimal tire compaction.



## SPECIFICATIONS

Attachment Models	Compatibility	Working Width		Unit Weight	
		mm	(in)	kg	(lb)
LR116	SSL, CTL, CWL	1576	(62)	595	(1312)
LR119	SSL, CTL, CWL	1883	(74)	653	(1440)

SSL: Skid Steer Loader  
CTL: Compact Track Loader

CWL: Compact Wheel Loader

Certain models within the family of machines listed may not be compatible with the attachment. Please consult your Cat dealer for further information.

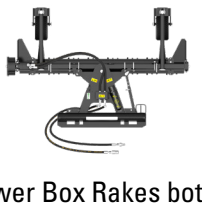
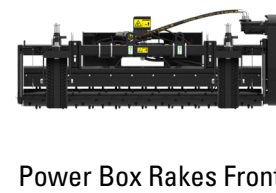
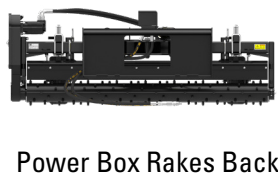
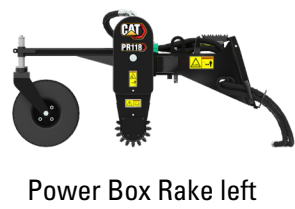
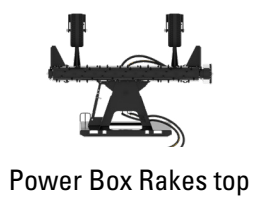
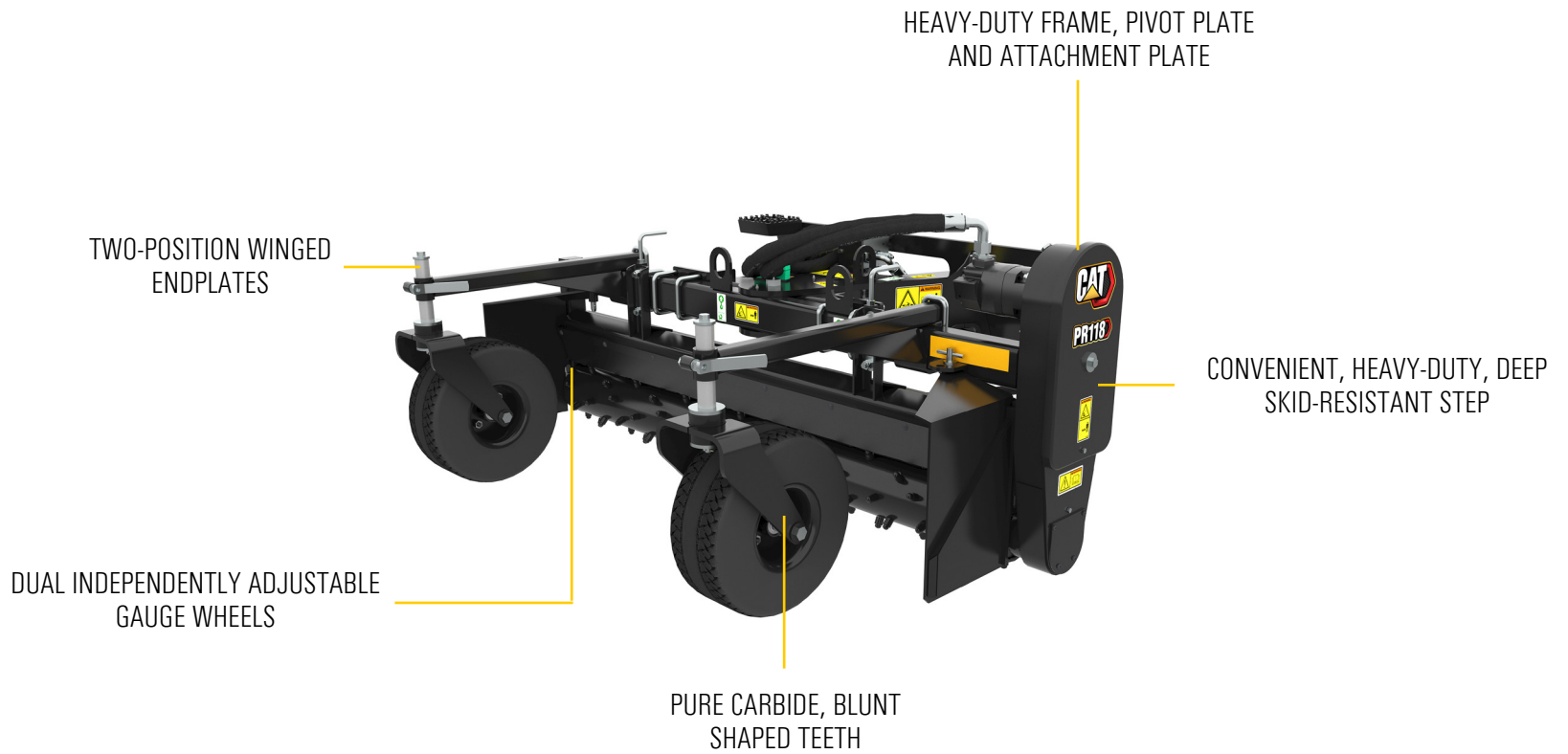
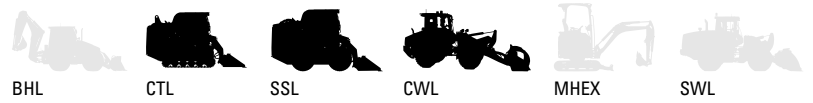


LANDSCAPE RAKES

**Application 1:** Use the scarifying action of the hardened teeth to pulverize, aerate, level and condition the soil while collecting and depositing rock and debris in the integrated hopper.

# POWER BOX RAKES

COMPATIBLE WITH



## Cat® Power Box Rakes

Cat® Power Box Rakes are ideal for clearing and preparing soil in general construction trench restoration, golf course construction and athletic field maintenance. They offer the versatility to de-thatch, remove old lawns and weeds, grade, level, rake, remove debris and prepare seedbeds with one work tool. Their angling ability allows the operator to windrow collected debris for easy pickup and removal. The consistent milling action creates an ideal seedbed for great germination results, laying the groundwork for a perfect lawn. Wet, dry, weedy, hard and rocky soil can be dried, flattened, pulverized and conditioned for seed in one step.

## SPECIFICATIONS

Attachment Models	Compatibility	Working Width		Weight	
		mm	(in)	kg	(lb)
PR118 Manual	SSL, CTL, CWL	2057	(81)	408	(900)
PR118 Hydraulic	SSL, CTL, CWL	2057	(81)	427	(941)
PR121 Manual	SSL, CTL, CWL	2362	(93)	465	(1025)
PR121 Hydraulic	SSL, CTL, CWL	2362	(93)	483	(1065)
PR123 (Hydraulic)	SSL, CTL, CWL	2515	(99)	606	(1336)

CTL: Compact Track Loader      SSL: Skid Steer Loader  
 CWL: Compact Wheel Loader

Certain models within the family of machines listed may not be compatible with the attachment. Please consult your Cat dealer for further information.



POWER BOX RAKES ON CTL



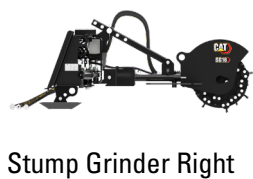
POWER BOX RAKES ON CTL

**Application 1:** Ideal for clearing and preparing soil, offering the versatility to de-thatch, remove old lawns and weeds, grade, level, rake, remove debris and prepare seedbeds all with one work tool.



# STUMP GRINDERS

COMPATIBLE WITH



## Cat® Stump Grinders.

Cat® Stump Grinders are designed to economically remove stumps in residential, commercial and agricultural settings. They offer increased production over tow-behind grinders in situations where multiple stump removal is required. The right balance of cutting wheel speed and torque makes quick work of most tree varieties.

## SPECIFICATIONS

Attachment	Compatibility	Cutting Height Above Ground		Cutting Depth Below Ground		Working Width		Unit Weight	
		mm	(in)	mm	(in)	mm	(in)	kg	(lb)
SG16	SSL, CTL, CWL	470	(19)	521	(21)	1175	(46)	378	(836)
SG36	SSL, CTL	470	(19)	521	(21)	1175	(46)	400	(882)

SSL: Skid Steer Loader      CTL: Compact Track Loader      CWL: Compact Wheel Loader

Certain models within the family of machines listed may not be compatible with the attachment. Please consult your Cat dealer for further information.



STUMP GRINDERS SG18B

**Application 1:** Offers the right balance of cutting wheel speed and torque to make quick work of most tree varieties.



# THUMBS

## COMPATIBLE WITH



SIMPLE TO OPERATE



KEEP A MORE PRECISE CONTROL OF YOUR LOAD



Thumbs Right Side



Thumbs faced down



Thumbs facing up

### Go from digging to material handling.

Our thumbs work with buckets and rippers to grab, pick, or sort material. They're offered with stiff link or are hydraulically controlled from the cab, opening and closing around loads. And when you don't need it, the thumb can recline against the machine stick.



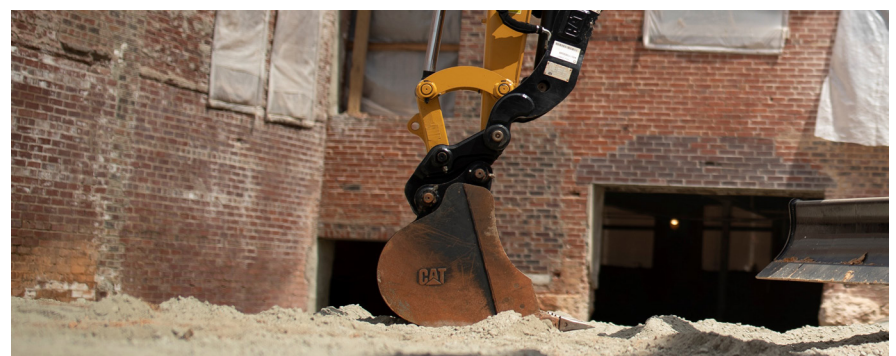
## SPECIFICATIONS

Attachment	Compatibility	Rotation Angle
Models		degrees
Hydraulic	MHEX, BHL	116-133
MHEX: Mini Excavator	BHL: Backhoe Loader	

Certain models within the family of machines listed may not be compatible with the attachment. Please consult your Cat dealer for further information.



THUMBS



THUMBS

**Subcategory:** Land Management.

**Application 1:** Designed to work with the Cat Mini Hydraulic Excavator bucket to easily grab, pick up, handle and load irregular.

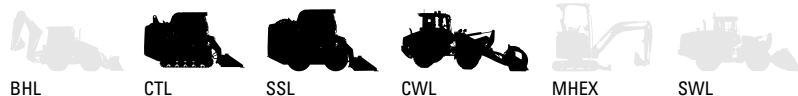
**Application 2:** Paired with the bucket to easily grab loose material such as poles, brush, metal, trash, rock and more, which would otherwise be difficult to handle with a bucket only.





# TILLERS

## COMPATIBLE WITH



COMPACT WORK  
TOOL ENVELOPE

LEVEL INDICATOR



SINGLE MOTOR DIRECT  
DRIVE SYSTEM



Tiller front



Tiller top



## Cat® Landscape Tillers

Are designed for breaking up and pulverizing soil, mixing compost or other materials into existing soil, and stabilizing and leveling existing terrain in landscape finish applications. They are ideal for residential, commercial, agricultural, building construction, lawn care and golf course maintenance applications.

## SPECIFICATIONS

Attachment Models	Compatibility	Working Width		Unit Weight	
		mm	(in)	kg	(lb)
LT114	SSL, CTL, CWL	1354	(53)	340	(750)
LT118	SSL, CTL, CWL	1848	(73)	420	(926)

SSL: Skid Steer Loader

CWL: Compact Wheel Loader

CTL: Compact Track Loader

Certain models within the family of machines listed may not be compatible with the attachment. Please consult your Cat dealer for further information.



TILLER

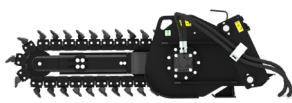
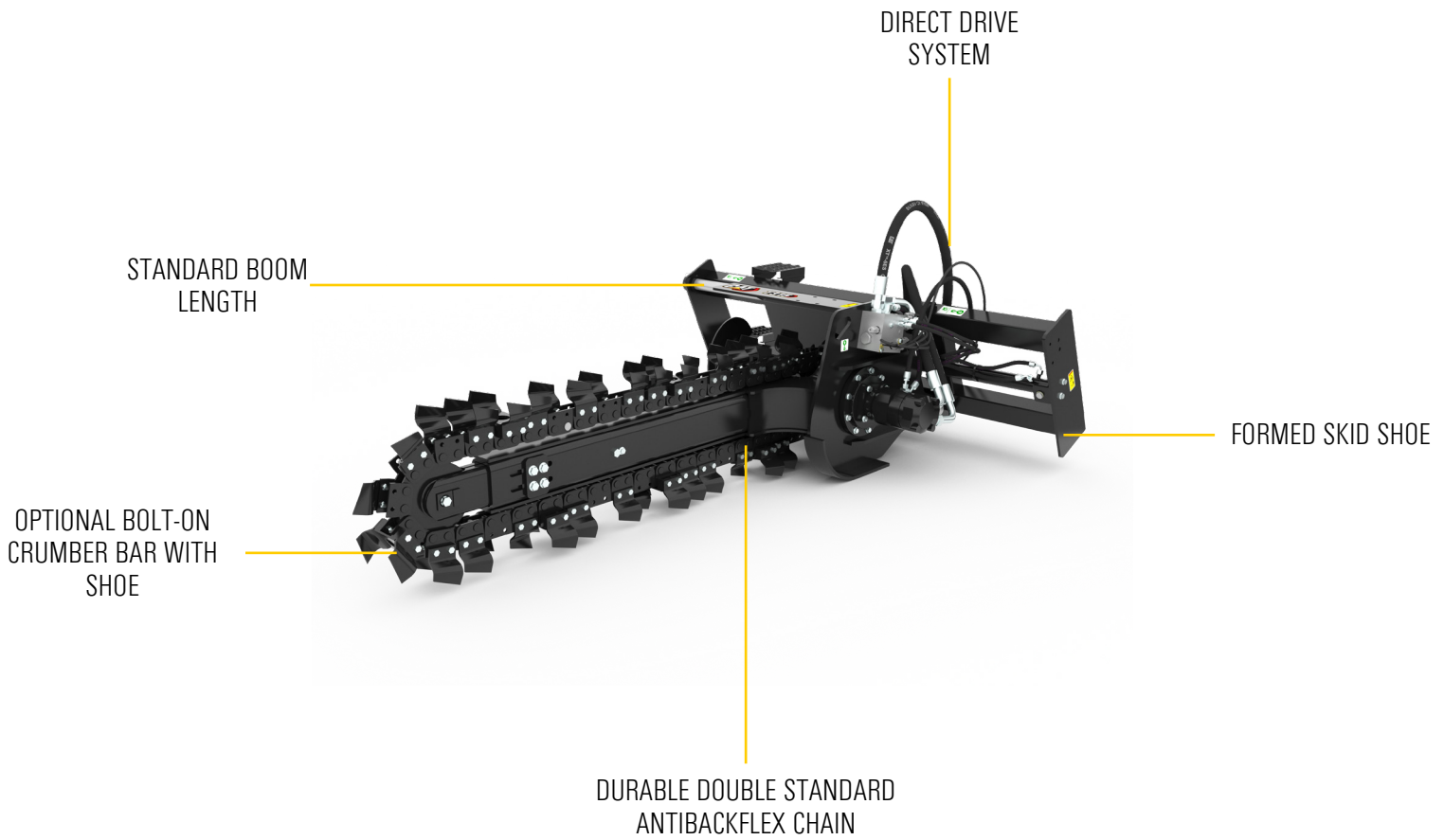
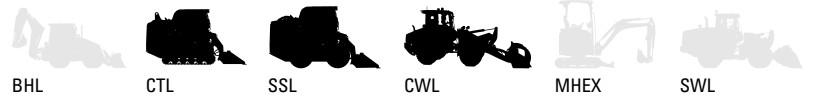


TILLER

**Application 1:** Designed to break up and pulverize soil, mix compost or other materials into existing soil, and stabilize and level existing terrain in landscape finish applications.

# TRENCHERS

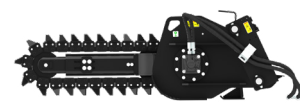
## COMPATIBLE WITH



Trencher Rockfrost Chain



Trencher Combination Chain



Trencher Terminator Chain

## Cat® Trenchers

Are designed for cutting narrow straight trenches in the soil prior to laying electrical, telephone and cable lines, or water and gas pipe. Trenchers are ideal for residential, commercial, agricultural, building construction, lawn care and golf course maintenance.

## SPECIFICATIONS

Attachment Models	Compatibility	Cutting Width		Standard Boom Length	
		mm	(in)	mm	(in)
T109 Manual & Hydraulic	SSL, CTL, CWL	152	(6)	914	(36)
T109 Manual & Hydraulic	SSL, CTL, CWL	203	(8)	914	(36)
T112 Manual & Hydraulic	SSL, CTL, CWL	152	(6)	1219	(48)
T112 Hydraulic	SSL, CTL, CWL	203	(8)	1219	(48)
*T315	SSL, CTL, CWL	152	(6)	1524	(60)
T315	SSL, CTL, CWL	203	(8)	1524	(60)

CTL: Compact Track Loader      SSL: Skid Steer Loader  
CWL: Compact Wheel Loader

\*Requires high flow or high flow XPS option on machine. Operates in high flow XPS on XHP machines.

**Application 1:** Used for cutting narrow straight trenches in soil prior to laying electrical, telephone and cable lines, as well as water and gas pipe.



# UTILITY GRAPPLE FORKS

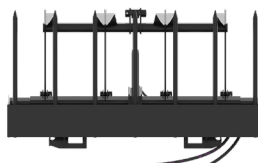
## COMPATIBLE WITH



PIERCE BUNDLES OF STRAW, HAY AND DRIED WASTE.



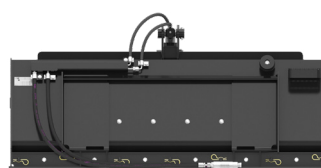
HOLDS MATERIAL ON THE TINES TO HELP RETAIN THE MASS



Utility grapple forks top



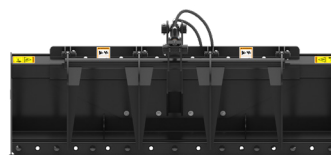
Utility grapple forks side



Utility grapple forks back



Utility grapple forks side



Utility grapple forks front

## Transport light material — in less time.

With a series of straight tines, our utility grapple fork can pierce bundles of straw, hay and dried waste. The curved upper jaw holds material on the tines to help retain the mass.

## SPECIFICATIONS

Compatibility	Overall Width		Fork Tine Length	
	mm	(in)	mm	(in)
CTL, SSL	1676-1829	(66-72)	940	(37)

CTL: Compact Track Loader      SSL: Skid Steer Loader

Certain models within the family of machines listed may not be compatible with the attachment. Please consult your Cat dealer for further information.

**Application 1:** Can pierce bundles of straw, hay and dried waste.

Materials and specifications are subject to change without notice. Featured machines in photos may include additional equipment. See your Cat dealer for available options.

© 2023 Caterpillar. All Rights Reserved. CAT, CATERPILLAR, LET'S DO THE WORK, their respective logos, "Caterpillar Corporate Yellow", the "Power Edge" and Cat "Modern Hex" trade dress as well as corporate and product identity used herein, are trademarks of Caterpillar and may not be used without permission.

