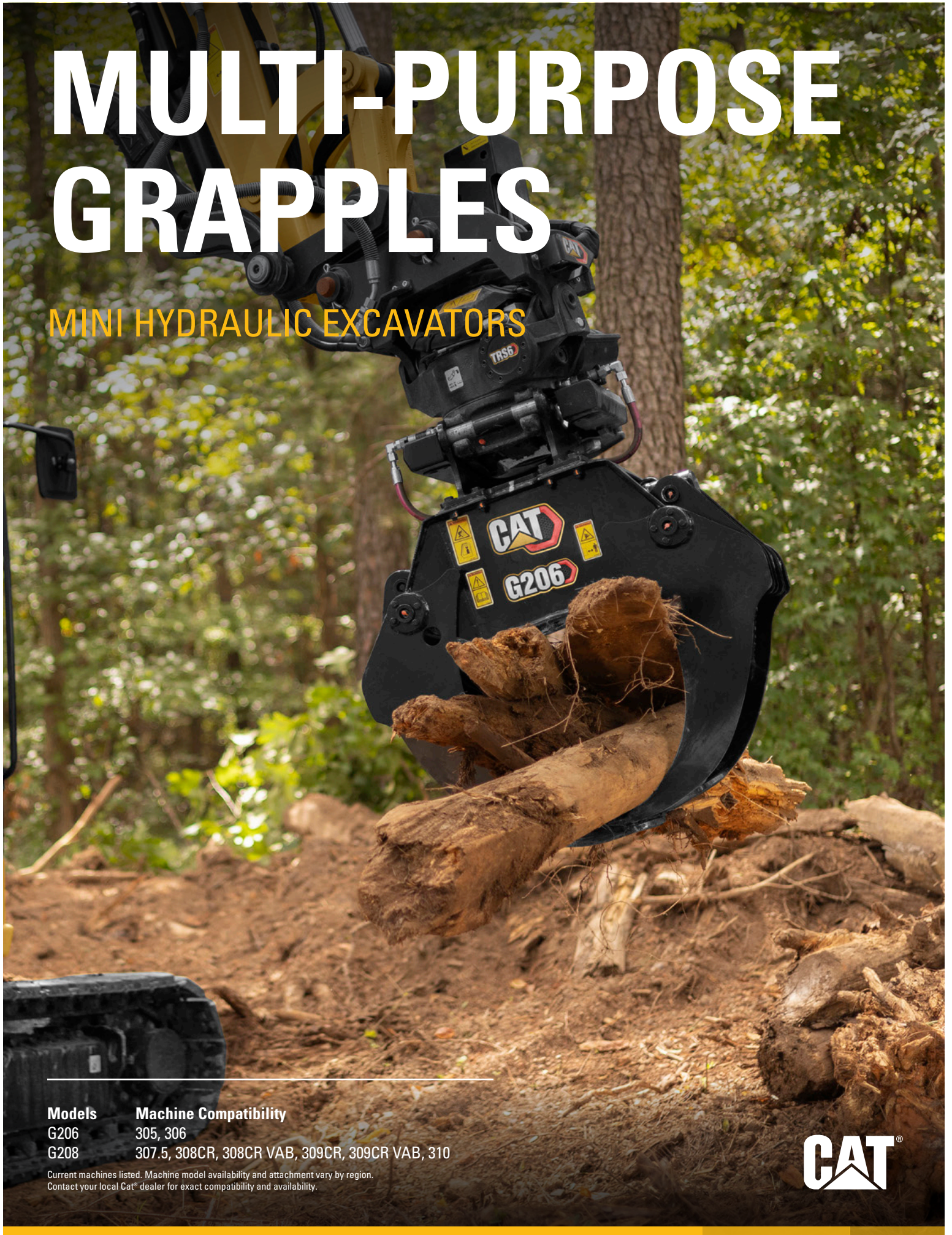


# MULTI-PURPOSE GRAPPLES

MINI HYDRAULIC EXCAVATORS



---

**Models**

G206

G208

**Machine Compatibility**

305, 306

307.5, 308CR, 308CR VAB, 309CR, 309CR VAB, 310

Current machines listed. Machine model availability and attachment vary by region.  
Contact your local Cat® dealer for exact compatibility and availability.



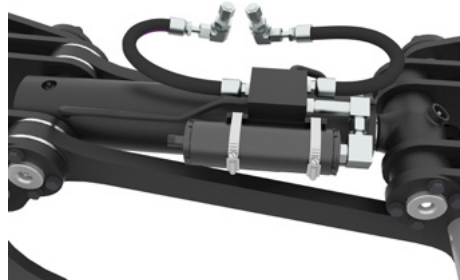
The Cat® G206 and G208 Multi-Purpose Grapples are designed to allow maximum maneuverability with the Cat tilt rotate system (TRS). The integrated bracket has a minimal offset to optimize performance. The multi-purpose grapple works best in material handling applications with irregular surface materials such as concrete pipe, tree and foliage, landscaping hardscape and more.

## FEATURES



### GRAPPLE SITS UPRIGHT WHEN DISCONNECTED

Remains stable and vertical, allowing operator to quickly engage or disengage a TRS bottom side quick coupler.



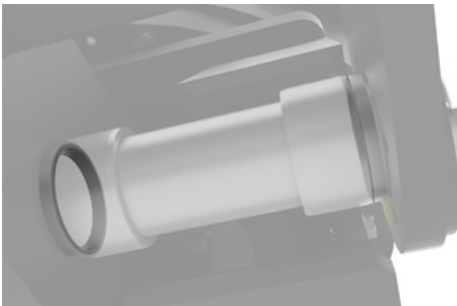
### LOAD HOLDING VALVE AND CYLINDER MOUNTED ACCUMULATOR

Maintains grapple closing pressure with zero leakage. Hard mounted accumulator reduces potential leaks and decreases hydraulic response time.



### INTEGRATED JUMPER LINES

Integrated jumper lines are short and optimally routed offering superior protection against damage, dirt and debris.



### LIPSEALS

Integrated pin joint lip seals keep grease in and dirt out.



### INTEGRATED BRACKET DESIGN

Integrated bracket specifically designed for the hydraulic TRS attachments to ensure load forces are always evenly distributed providing a smoother operation.



### DOUBLE CONNECTING RODS

Provide optimal open and close force guidance on both sides of the cylinder.



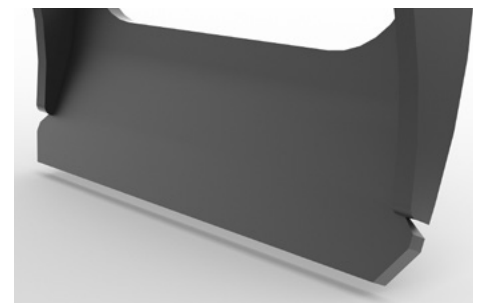
### DOUBLE MECHANICAL STOPS

Prevent over closing and help ensure optimal functionality.



### STANDARD 2 YEAR WARRANTY

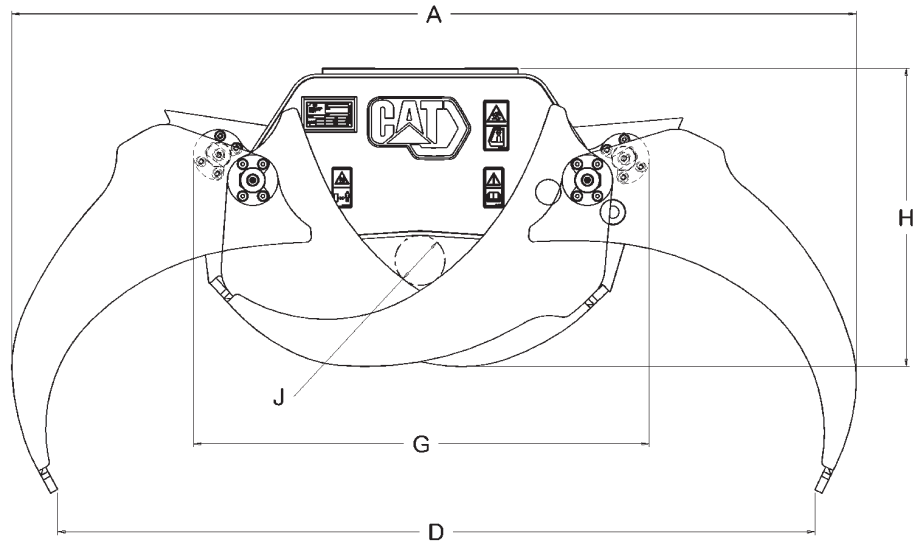
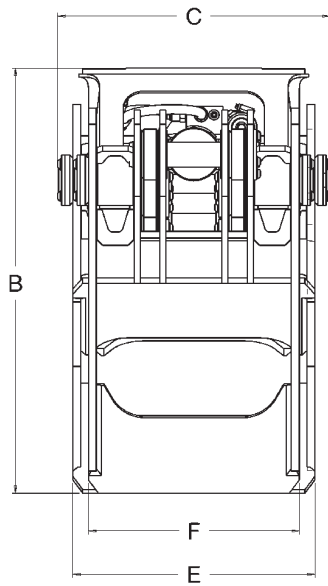
Gives you peace of mind when purchasing a quality Cat grapple.



### OPTIMAL EDGE ABRASION RESISTANCE

Arms hardened to AR450 and edges hardened to AR500/HB500 standards provide higher strength and longer wear in rough conditions.

# DIMENSIONS

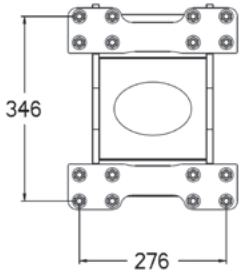


Model	G206	G208
<b>A</b> Overall Width (Open)	1445 mm   57 in	1673 mm   66 in
<b>B</b> Height (Open)	740 mm   29 in	842 mm   33 in
<b>C</b> Overall Depth	465 mm   18 in	540 mm   21 in
<b>D</b> Maximum Grapple Opening	1290 mm   51 in	1500 mm   59 in
<b>E</b> Outer Arm Width	405 mm   16 in	480 mm   19 in
<b>F</b> Inner Arm Width	351 mm   14 in	418 mm   17 in
<b>G</b> Overall Width (Closed)	784 mm   31 in	903 mm   36 in
<b>H</b> Height (Closed)	513 mm   20 in	591 mm   23 in
<b>J</b> Minimum Grip Diameter	78 mm   3 in	100 mm   4 in
Weight	178 kg   392 lb	286 kg   631 lb
Maximum Closing Force	14.5 kN   3,260 lbf	18.4 kN   4,136 lbf
Maximum Lifting Capacity*	3000 kg   6,614 lb	4800 kg   10,582 lb
Machine Class	5-6 Ton	7-10 Ton
Interface Type	S40, Pin on	S45, S50, Pin on

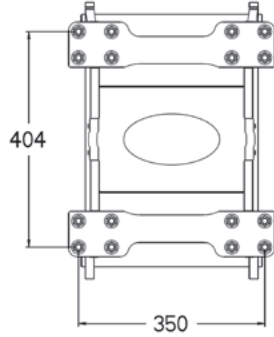
\*Machine capacity dependent.

## INTEGRATED TOOL BRACKETS

TRS tool brackets are optimally designed specifically for use on the TRS platform. This design is symmetrical with a low profile unlike the hammer bracket used on other products. The TRS tool brackets are available in both S type and pin on, and in medium (TRS6) and large (TRS8) patterns.



TRS6 TOOL BRACKET



TRS8 TOOL BRACKET



TRS Tool Brackets			
Model	Outer Hole Spacing mm × mm (in × in)	TRS6 (Medium)	TRS8 (Large)
G206	276 × 346 (10.9 × 13.6)	●	
G208	350 × 404 (13.8 × 15.9)		●

For more complete information on Cat products, dealer services and industry solutions, visit us on the web at [www.cat.com](http://www.cat.com)

AEHQ8423 (12-2023)  
(Global)

© 2023 Caterpillar. All Rights Reserved.

Materials and specifications are subject to change without notice. Featured machines in photos may include additional equipment. See your Cat dealer for available options.

CAT, CATERPILLAR, LET'S DO THE WORK, their respective logos, "Caterpillar Corporate Yellow," the "Power Edge" and Cat "Modern Hex" trade dress as well as corporate and product identity used herein, are trademarks of Caterpillar and may not be used without permission.

[www.cat.com](http://www.cat.com) [www.caterpillar.com](http://www.caterpillar.com)

