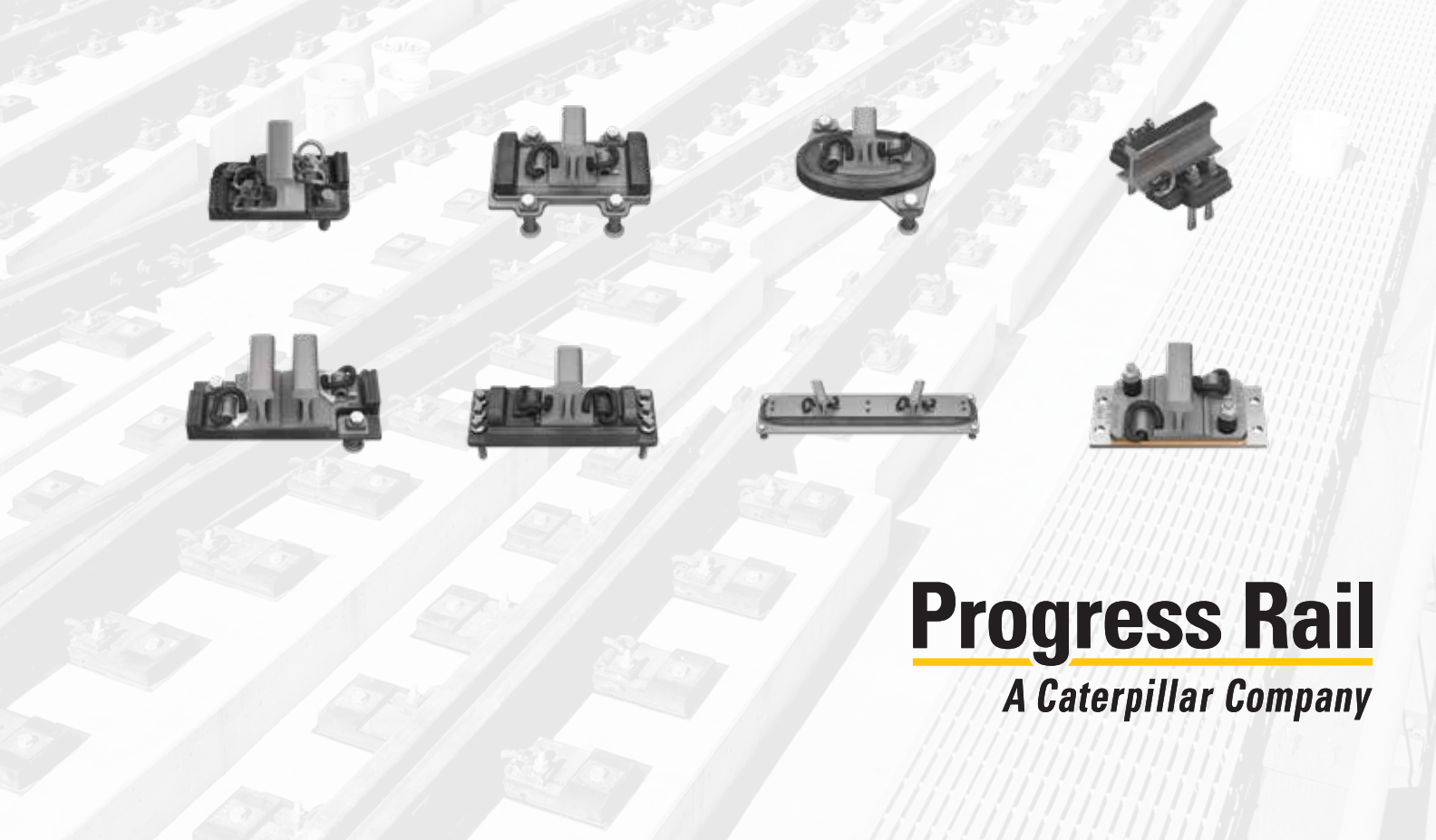


# BALLASTLESS FASTENING SYSTEMS FOR TRANSIT AND FREIGHT ENVIRONMENTS



**Progress Rail**  
*A Caterpillar Company*

# OUR COMPREHENSIVE LINE OF RAIL FASTENERS

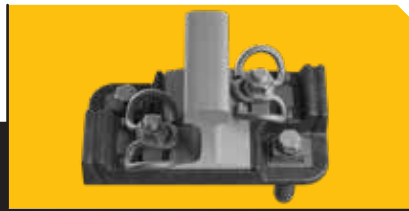
With state-of-the-art manufacturing facilities located strategically around the globe, we produce the highest quality and widest range of rail fastening systems in both standard and high resilient direct fixation fasteners for tangent, tight curves and special trackwork. In our more than 40-year history we have created one of the most comprehensive rail fastening portfolios in the industry.

In October 2015, Progress Rail acquired Amsted Rail's Rail Product Solutions (RPS) division to capture best-in-class, high-performance rail fastener solutions for freight and transit rail customers. This acquisition expanded the Progress Rail product offerings to include fundamental components for rail infrastructure, playing a crucial role in

enhancing reliability, improving ride quality and minimising track downtime. We support our customers by delivering innovative options, such as the Loadmaster, ADFE, DF Block System and C-160 direct fixation units.

Progress Rail's Fastener Division is here to provide products that address the needs of the industry. Whether you require a product straight from our portfolio or to accommodate a special need we're here to work with you to find the best solutions.

## SW SERIES



Typical vertical stiffness is ~ 22kN/mm

Available with SKL-type, e-Style and PR-style clips

Allows for +/- 1/2" gauge adjustment

Designs for up to 26t axle load

Installed on several major transit railroads

## LOADMASTER 40



Dual Vertical stiffness 20kN/mm

Available with SKL-type, e-Style and PR-style clips

Allows for +/- 1/2" gauge adjustment

Designed for 40t axle loads and higher

Installed on many transit and freight railroads

## ADFF



Vertical stiffness is 5kN/mm and higher

Available for SKL-Style, e-Style and PR-style clips

Allows for +/- 1/2" gauge adjustment

Designed for up to 18t axle load

Installed in multiple transit railroads

Innovation from legacy Egg Type DF

## ADFF-C



Vertical stiffness is 5kN/mm and higher

Available for e-Style and PR-style clips

Allows for +/- 1/2" gauge adjustment

Designed for up to 18t axle load

Retrofits IOARV 336 in curves

Innovation from legacy Egg Type DF

## DF BLOCK



Supports systemwide, high attenuation and heavy haul DF designs

Available for e-Style and PR-style clips

Readily allows for +/- 1/2" gauge and vertical adjustment

Designs for up to 30t axle load

Installed in major US transit system

Requires significantly less time, labor and material to install compared to traditional DF installation technique

## LOADMASTER TT



Dual Vertical stiffness 20kN/mm

Available with SKL-type, e-Style and PR-style clips

Allows for no gauge adjustment

Designed for 40t axle loads and higher

Installed on many transit and freight railroads

## TURNOUT EGG



Vertical stiffness is 10kN/mm

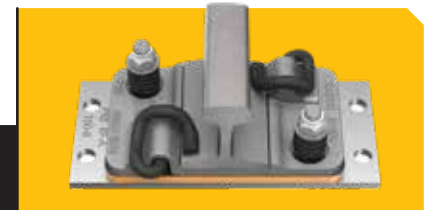
Available for e-Style and PR-style clips

Allows for no gauge adjustment

Designed for up to 18t axle load

Installed in many transit railroads

## RF PLATE



Vertical stiffness is 12kN/mm

Available for e-Style and PR-style clips

Allows for no gauge adjustment

Designed for up to 18t axle load



For more information please contact:



**MICHAEL STEIDL**  
+49 172 6743335  
msteidl@progressrail.com

**Progress Rail**  
*A Caterpillar Company*

+1 800-476-8769  
ProgressRail.com

