



# M317

## Wheeled Excavator

# Technical Specifications

Configurations and features may vary by region. Please consult your Cat® dealer for availability in your area.

## Table of Contents

<b>Specifications</b> .....	<b>2</b>
Engine .....	2
Transmission .....	2
Service Refill Capacities .....	2
Swing Mechanism .....	2
Undercarriage .....	2
Operating Weights* .....	3
Hydraulic System .....	3
Tires .....	3
Dozer Blade .....	3
Emissions and Safety .....	3
Standards .....	4
Sound Performance .....	4
Air Conditioning System .....	4
Dimensions .....	5
Undercarriage Dimensions .....	6
Working Ranges .....	7
Lift Capacities:	
One-Piece Boom, 2.4 m Stick .....	8
One-Piece Boom, 7'10" Stick .....	9
One-Piece Boom, 2.6 m Stick .....	10
One-Piece Boom, 8'6" Stick .....	11
Bucket Specifications and Compatibility:	
South America .....	12
Africa Middle East, Eurasia .....	13
SE Asia .....	14
Attachments Offering Guide:	
South America .....	15
Africa Middle East, Eurasia .....	16
SE Asia (India, Indonesia, Singapore, and Thailand) .....	19
<b>Standard and Optional Equipment</b> .....	<b>20</b>
<b>Cab Options</b> .....	<b>22</b>

# M317 Wheeled Excavator Specifications

## Engine

Engine Model	Cat® C4.4	
Maximum Gross Power		
ISO 14396	108 kW	145 hp
ISO 14396 (DIN)	147 hp (metric)	
Maximum Net Power		
ISO 9249	101 kW	135 hp
ISO 9249 (DIN)	137 hp (metric)	
Bore	105 mm	4.1 in
Stroke	127 mm	5.0 in
Displacement	4.4 L	268.5 in <sup>3</sup>
Number of Cylinders	4	

- Meets U.S. EPA Tier 3 and EU Stage IIIA emission standards.
- Net power advertised is the power available at the flywheel when engine is equipped with fan, air cleaner, Clean Emission Module (CEM) exhaust gas aftertreatment, alternator, and cooling fan running at intermediate speed.
- Recommended for use up to 3000 m (9,840 ft) altitude with engine power derate above 3000 m (9,840 ft).
- Advertised power is tested per the specified standard in effect at the time of manufacture.
- Rated speed 2,000 rpm.

## Transmission

Forward/Reverse		
1st Gear	8 km/h	5.0 mph
2nd Gear	34 km/h	21.1 mph
Creep Speed		
1st Gear	3.0 km/h	1.7 mph
2nd Gear	13 km/h	8.1 mph
Drawbar Pull	97 kN	21,806 lbf
Maximum Gradeability at (16 500 kg/36,380 lb)	69%	

## Service Refill Capacities

Fuel Tank (total capacity)	240 L	63.4 gal
Cooling System	33 L	8.7 gal
Engine Oil	8 L	2.1 gal
Hydraulic Tank	135 L	35.7 gal
Hydraulic System (including tank)	255 L	67 gal
Rear Axle Housing (differential)	14 L	3.7 gal
Front Steering Axle (differential)	10.5 L	2.8 gal
Final Drive (each)	2.5 L	0.7 gal
Powershift Transmission	2.5 L	0.7 gal

## Swing Mechanism

Maximum Swing Speed	9 rpm	
Maximum Swing Torque	42.0 kN-m	31,080 lbf-ft

## Undercarriage

Ground Clearance	370 mm	14.6 in
Axle Clearance	370 mm	14.6 in
Maximum Steering Angle	35°	
Oscillation Axle Angle	± 8.5°	
Minimum Turning Radius		
Outside of Tire	6300 mm	20.7 ft
End of One-Piece Boom	6900 mm	22.6 ft

# M317 Wheeled Excavator Specifications

## Operating Weights\*

Minimum	16 200 kg	35,700 lb
Maximum	17 000 kg	37,500 lb
Typical configurations:		
One-Piece Boom*		
Front Blade, Rear Outriggers	16 850 kg	37,100 lb
Sticks		
Medium 2400 mm (7'10" )	514 kg	1,100 lb
Long 2600 mm (8'6" )	530 kg	1,170 lb
Counterweight		
Standard	3500 kg	7,720 lb
Optional	3900 kg	8,600 lb

\*Machine weight with medium stick, 3900 kg (8,600 lb) counterweight, with operator and full fuel tank, with 245 kg (540 lb) quick coupler and 575 kg (1,270 lb) bucket. Weight varies depending on configuration.

## Hydraulic System

Maximum Pressure – Implement Circuit		
Normal	35 000 kPa	5,076 psi
Heavy Lift	37 500 kPa	5,366 psi
Travel Circuit	35 000 kPa	5,076 psi
Maximum Pressure – Auxiliary Circuit		
High Pressure	35 000 kPa	5,076 psi
Medium Pressure	18 500 kPa	2,466 psi
Swing Mechanism	37 000 kPa	5,657 psi
Maximum Flow		
Implements	220 L/min	58 gal/min
Travel Circuit	220 L/min	58 gal/min
Auxiliary Circuit		
High Pressure	220 L/min	58.1 gal/min
Medium Pressure	40 L/min	10.6 gal/min
Swing Mechanism	78 L/min	20.6 gal/min
Cylinders		
Boom Cylinder – Bore	115 mm	5"
Boom Cylinder – Stroke	916 mm	3'0"
Stick Cylinder – Bore	120 mm	5"
Stick Cylinder – Stroke	1147 mm	3'9"
Bucket Cylinder – Bore	100 mm	4"
Bucket Cylinder – Stroke	1015 mm	3'4"

## Tires

Standard 10.00-20 (dual pneumatic)

## Dozer Blade

Blade Type	Radial	
Width	2540 mm	8'4"
Blade Roll-Over Height	540 mm	1'9"
Blade Total Height	580 mm	1'11"
Maximum Lowering Depth From Ground	127 mm	0'5"
Maximum Raising Height Above Ground	480 mm	1'7"

## Emissions and Safety

Engine Emissions	Equivalent to Tier 3 and Stage IIIA	
Vibration Levels		
Maximum Hand/Arm (ISO 5349-2001)	<2.5 m/s <sup>2</sup>	<8.2
Maximum Whole Body (ISO/TR 25398:2006)	<0.5 m/s <sup>2</sup>	<1.6
Seat Transmissibility Factor (ISO 7096:2000-spectral class EM5)	<0.7	

# M317 Wheeled Excavator Specifications

## Standards

Brakes	ISO 3450:2011
Cab/Operator Protective Guards (OPG)	Falling Object Protective Structure (FOPS) meets FOPS criteria ISO 10262:1998 and SAE J1356:2008
Cab/Sound Levels	Meets appropriate standards as listed below

## Sound Performance

External Sound ISO 6395:2008	102 dB(A)
Internal Sound ISO 6396:2008	74 dB(A)

- External Sound – The labelled spectator sound power level represents the Guaranteed Value per 2000/14/EC amended by 2005/88/EC, when properly equipped, and is measured according to the test procedures and conditions specified in ISO 6395:2008. The measurements were conducted at 70% of the maximum engine cooling fan speed.
- Internal Sound – The operator sound pressure level is measured according to the test procedures and conditions specified in ISO 6396:2008 for a cab offered by Caterpillar, when properly installed and maintained and tested with the door and windows closed. The measurements were conducted at 70% of the maximum engine cooling fan speed.
- Hearing protection may be needed when operating with an open operator station and cab (when not properly maintained for doors/windows open) for extended periods or in noisy environment(s).

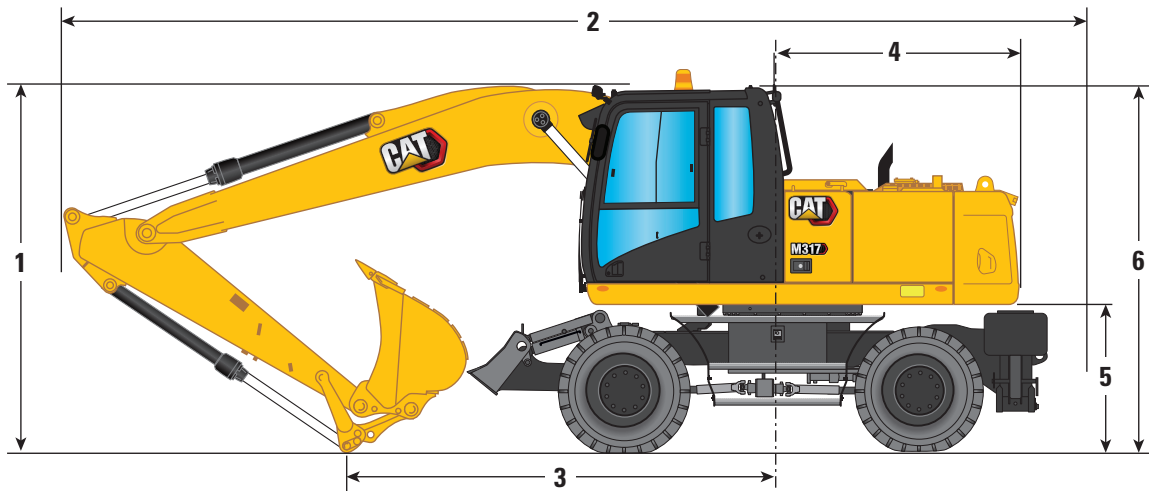
## Air Conditioning System

The air conditioning system on this machine contains the fluorinated greenhouse gas refrigerant R134a (Global Warming Potential = 1430). The system contains 0.85 kg of refrigerant, which has a CO<sub>2</sub> equivalent of 1.216 metric tonnes.

# M317 Wheeled Excavator Specifications

## Dimensions

All Dimensions are approximate. Values are with 10.00-20 Dual Pneumatic Tires.



### Boom Option

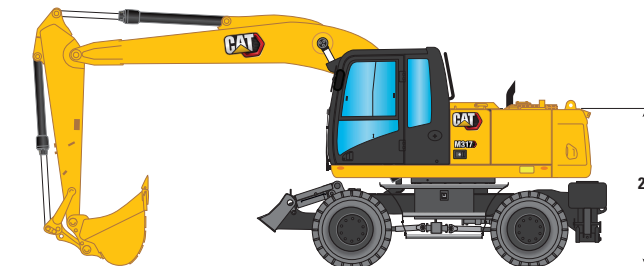
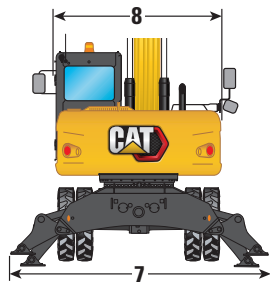
### One-Piece Boom 5050 mm (16'7")

### Stick Options

2.4 m (7'10")

2.6 m (8'6")

1 Shipping Height With Operator Protective Guards (OPG) (highest point between boom and cab)	3150 mm (10'4")	3150 mm (10'4")
2 Shipping Length	8330 mm (27'4")	8330 mm (27'4")
3 Support Point	3280 mm (10'9")	3160 mm (10'4")
4 Tail Swing Radius	2210 mm (7'3")	2210 mm (7'3")
5 Counterweight Clearance	1260 mm (4'2")	1260 mm (4'2")
6 Cab Height		
No OPG	3151 mm (10'4")	3151 mm (10'4")
With OPG	3240 mm (10'8")	3240 mm (10'8")
Overall Machine Width	2550 mm (8'4")	2550 mm (8'4")
Width with Outriggers on Ground	3812 mm (12'6")	3812 mm (12'6")
Width with Outriggers Up	2550 mm (8'4")	2550 mm (8'4")
Width with Blade	2540 mm (8'4")	2540 mm (8'4")
7 Width with Outriggers Fully Down	3645 mm (11'11")	3645 mm (11'11")
23 Enclosure Height (doors)	2240 mm (7'4")	2240 mm (7'4")
8 Upperframe Width	2540 mm (8'4")	2540 mm (8'4")



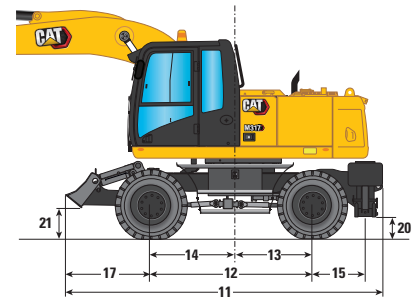
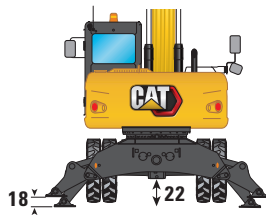
# M317 Wheeled Excavator Specifications

## Undercarriage Dimensions

All Dimensions are approximate.

Undercarriage	Rear Outrigger/Front Blade
<b>11</b> Overall Undercarriage Length	5175 mm (16'12")
<b>12</b> Wheel Base	2750 mm (9'0")
<b>13</b> Swing Bearing Center to Rear Axle	1300 mm (4'3")
<b>14</b> Swing Bearing Center to Front Axle	1450 mm (4'9")
<b>15</b> Rear Axle to Rear Outrigger (mid)	800 mm (2'7")
<b>17</b> Front Axle to Parallel Blade (end)	1350 mm (4'5")
<b>18</b> Maximum Outrigger Depth	115 mm (0'5")
<b>19</b> Blade Width	2540 mm (8'4")
Maximum Blade Depth	130 mm (0'5")
Ground Clearance	
Lowest Step Clearance	475 mm (1'7")
<b>20</b> Outrigger Clearance	325 mm (1'1")
<b>21</b> Blade Clearance	495 mm (1'7")
<b>22</b> Axle Clearance	320 mm (1'1")

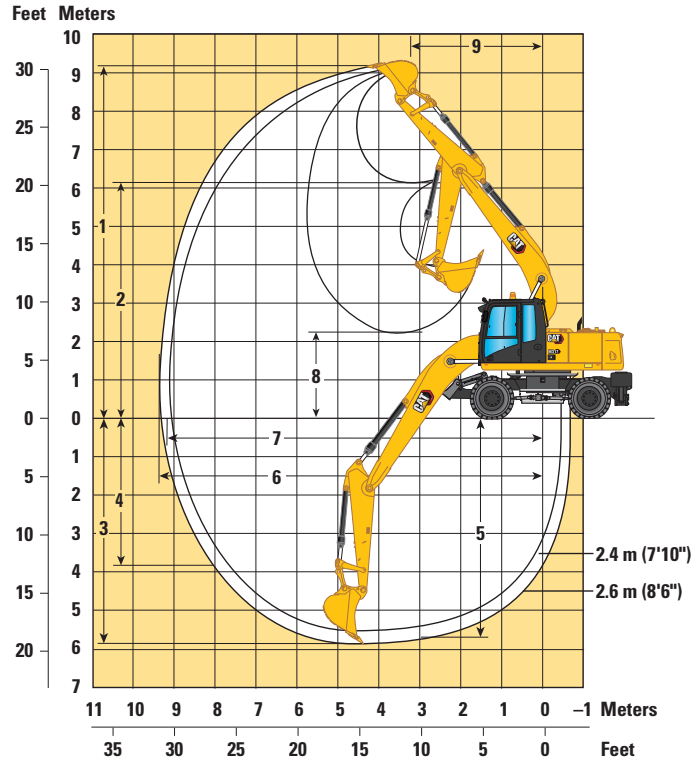
Maximum tire clearance with outrigger fully down



# M317 Wheeled Excavator Specifications

## Working Ranges

All Dimensions are approximate. Values are with 10.00-20 Dual Pneumatic Tires.



Boom Option	One-Piece Boom 5050 mm (16'7")	
	2.4 m (7'10")	2.6 m (8'6")
<b>Stick Options</b>		
1 Maximum Digging Height	9070 mm (29'9")	9190 mm (30'2")
2 Maximum Dump Height	6110 mm (20'0")	6230 mm (20'5")
3 Maximum Digging Depth	5690 mm (18'8")	5890 mm (19'4")
4 Maximum Vertical Wall Digging Depth	3650 mm (12'0")	3820 mm (12'6")
5 Maximum Depth Cut for 2440 mm (8 ft) Level Bottom	5490 mm (18'0")	5700 mm (18'8")
6 Maximum Reach	9160 mm (30'1")	9350 mm (30'8")
7 Maximum Reach at Ground Line	8970 mm (29'5")	9170 mm (30'1")
8 Minimum Loading Height	2450 mm (8'0")	2250 mm (7'5")
9 Minimum Front Swing Radius	3260 mm (10'8")	3230 mm (10'7")
Bucket Forces (ISO)	114 kN (25,628 lbf)	114 kN (25,628 lbf)
Stick Forces (ISO)	77 kN (17,310 lbf)	73 kN (16,411 lbf)
Bucket Type	GD	GD
Bucket Capacity	0.83 m <sup>3</sup> (1.09 yd <sup>3</sup> )	0.83 m <sup>3</sup> (1.09 yd <sup>3</sup> )
Bucket Tip Radius (Pin-On)	1237 mm (4'1")	1237 mm (4'1")
Bucket Tip Radius (QC)	1574 mm (5'2")	1574 mm (5'2")

Range values are with dual pneumatic tires (10.00-20).

Range values are calculated with a quick coupler and a 1100 mm (0.83 m<sup>3</sup>) bucket with a tip radius of 1574 mm (5'2").

Force values are calculated with heavy lift on (no quick coupler) and a cutting edge of 1237 mm (4'1").

# M317 Wheeled Excavator Specifications

## Lift Capacities – One-Piece Boom, 2.4 m Stick

Height and radius in meters, lift capacities in tons, work tool: none, bucket cylinder and bucket linkage installed, counterweight: 3500 kg, heavy lift function on.

		Load at maximum reach (sticknose/bucket pin)			Load over front			Load over rear			Load over side			Load point height			
	Undercarriage configuration	3.0 m			4.5 m			6.0 m			7.5 m						
																	m
6.0 m	Free on Wheels							4.05	2.80	2.50				*3.25	2.60	2.35	6.24
	Fully stabilized							*4.30	*4.30	*4.30				*3.25	*3.25	*3.25	
4.5 m	Free on Wheels				*5.70	4.30	3.85	4.00	2.75	2.45				3.05	2.05	1.85	7.07
	Fully stabilized				*5.70	*5.70	*5.70	*4.90	*4.90	4.25				*3.10	*3.10	*3.10	
3.0 m	Free on Wheels				6.00	4.00	3.55	3.85	2.60	2.35				2.70	1.85	1.65	7.50
	Fully stabilized				*6.90	*6.90	6.45	*5.35	*5.35	4.10				*3.10	*3.10	2.90	
1.5 m	Free on Wheels				5.70	3.70	3.30	3.70	2.50	2.20	2.65	1.80	1.60	2.60	1.75	1.55	7.60
	Fully stabilized				*7.85	*7.85	6.10	*5.75	*5.75	3.95	*4.15	4.10	2.85	*3.30	*3.30	2.80	
0 m	Free on Wheels				5.50	3.55	3.15	3.60	2.40	2.15				2.70	1.80	1.60	7.39
	Fully stabilized				*8.05	*8.05	5.90	*5.85	5.65	3.85				*3.65	*3.65	2.90	
-1.5 m	Free on Wheels	*8.50	6.55	5.65	5.45	3.50	3.10	3.60	2.35	2.10				3.00	2.00	1.80	6.83
	Fully stabilized	*8.50	*8.50	*8.50	*7.45	*7.45	5.85	*5.40	*5.40	3.85				*4.35	*4.35	3.20	
-3.0 m	Free on Wheels	*7.90	6.70	5.80	5.55	3.60	3.15							3.80	2.55	2.25	5.83
	Fully stabilized	*7.90	*7.90	*7.90	*5.85	*5.85	*5.85							*3.95	*3.95	*3.95	

\*Limited by hydraulic rather than tipping load.

Oscillating axle needs to be locked. Weight of all lifting accessories must be subtracted from the lifting capacities. All lift capacities calculated and rated per ISO 10567:2007. Rated loads do not exceed 87% of hydraulic lift capacity or 75% of tipping load. Heavy Lift Function ON. Lifting capacities are based on the machine standing on a firm uniform supporting surface. The load point is the center line of the bucket pivot mounting pin on the stick. Always refer to the appropriate Operation and Maintenance Manual for specific product information.

## Lift Capacities – One-Piece Boom, 2.4 m Stick

Height and radius in meters, lift capacities in tons, work tool: none, bucket cylinder and bucket linkage installed, counterweight: 3900 kg, heavy lift function on.

		Load at maximum reach (sticknose/bucket pin)			Load over front			Load over rear			Load over side			Load point height			
	Undercarriage configuration	3.0 m			4.5 m			6.0 m			7.5 m						
																m	
6.0 m	Free on Wheels							4.25	2.95	2.70				*3.25	2.75	2.50	6.24
	Fully stabilized							*4.30	*4.30	*4.30				*3.25	*3.25	*3.25	
4.5 m	Free on Wheels				*5.70	4.60	4.10	4.20	2.90	2.65				*3.10	2.20	2.00	7.07
	Fully stabilized				*5.70	*5.70	*5.70	*4.90	*4.90	4.45				*3.10	*3.10	*3.10	
3.0 m	Free on Wheels				6.35	4.25	3.80	4.10	2.80	2.50				2.90	2.00	1.80	7.50
	Fully stabilized				*6.90	*6.90	6.75	*5.35	*5.35	4.35				*3.10	*3.10	3.10	
1.5 m	Free on Wheels				6.00	3.95	3.55	3.95	2.65	2.40	2.85	1.95	1.75	2.80	1.90	1.70	7.60
	Fully stabilized				*7.85	*7.85	6.45	*5.75	*5.75	4.20	*4.15	*4.15	3.05	*3.30	*3.30	2.95	
0 m	Free on Wheels				5.85	3.80	3.40	3.85	2.55	2.30				2.85	1.95	1.75	7.39
	Fully stabilized				*8.05	*8.05	6.25	*5.85	*5.85	4.10				*3.65	*3.65	3.05	
-1.5 m	Free on Wheels	*8.50	7.05	6.05	5.80	3.75	3.35	3.80	2.55	2.25				3.20	2.15	1.95	6.83
	Fully stabilized	*8.50	*8.50	*8.50	*7.45	*7.45	6.20	*5.40	*5.40	4.05				*4.35	*4.35	3.40	
-3.0 m	Free on Wheels	*7.90	7.15	6.20	5.85	3.85	3.40							*3.95	2.70	2.45	5.83
	Fully stabilized	*7.90	*7.90	*7.90	*5.85	*5.85	*5.85							*3.95	*3.95	*3.95	

\*Limited by hydraulic rather than tipping load.

Oscillating axle needs to be locked. Weight of all lifting accessories must be subtracted from the lifting capacities. All lift capacities calculated and rated per ISO 10567:2007. Rated loads do not exceed 87% of hydraulic lift capacity or 75% of tipping load. Heavy Lift Function ON. Lifting capacities are based on the machine standing on a firm uniform supporting surface. The load point is the center line of the bucket pivot mounting pin on the stick. Always refer to the appropriate Operation and Maintenance Manual for specific product information.



# M317 Wheeled Excavator Specifications

## Lift Capacities – One-Piece Boom, 7'10" Stick

Height and radius in feet, lift capacities in lbs, work tool: none, bucket cylinder and bucket linkage installed, counterweight: 7,720 lb, heavy lift function on.

		Load at maximum reach (sticknose/bucket pin)			Load over front			Load over rear			Load over side			Load point height	
	Undercarriage configuration	10.0 ft			15.0 ft			20.0 ft						m	
20.0 ft	Free on Wheels							*8,100	5,900	5,400	*7,200	5,800	5,200	20.24	
	Fully stabilized							*8,100	*8,100	*8,100	*7,200	*7,200	*7,200		
15.0 ft	Free on Wheels				*12,400	9,300	8,400	8,600	5,900	5,300	6,800	4,600	4,100	23.10	
	Fully stabilized				*12,400	*12,400	*12,400	*10,700	*10,700	9,100	*6,800	*6,800	*6,800		
10.0 ft	Free on Wheels				12,900	8,600	7,700	8,300	5,600	5,100	6,000	4,100	3,600	24.57	
	Fully stabilized				*14,900	*14,900	13,800	*11,600	*11,600	8,900	*6,900	*6,900	6,400		
5.0 ft	Free on Wheels				12,200	8,000	7,100	8,000	5,400	4,800	5,800	3,900	3,500	24.93	
	Fully stabilized				*17,000	*17,000	13,100	*12,500	12,400	8,500	*7,200	*7,200	6,200		
0 ft	Free on Wheels	*9,600	*9,600	*9,600	11,800	7,600	6,800	7,800	5,200	4,600	5,900	4,000	3,500	24.25	
	Fully stabilized	*9,600	*9,600	*9,600	*17,500	*17,500	12,700	*12,700	12,200	8,300	*8,100	*8,100	6,400		
-5.0 ft	Free on Wheels	*19,400	14,100	12,100	11,700	7,600	6,700	7,700	5,100	4,500	6,600	4,400	3,900	22.38	
	Fully stabilized	*19,400	*19,400	*19,400	*16,100	*16,100	12,600	*11,700	*11,700	8,300	*9,600	*9,600	7,100		
-10.0 ft	Free on Wheels	*17,100	14,400	12,400	11,900	7,700	6,800				8,500	5,600	5,000	18.96	
	Fully stabilized	*17,100	*17,100	*17,100	*12,600	*12,600	*12,600				*8,700	*8,700	*8,700		

\*Limited by hydraulic rather than tipping load.

Oscillating axle needs to be locked. Weight of all lifting accessories must be subtracted from the lifting capacities. All lift capacities calculated and rated per ISO 10567:2007. Rated loads do not exceed 87% of hydraulic lift capacity or 75% of tipping load. Heavy Lift Function ON. Lifting capacities are based on the machine standing on a firm uniform supporting surface. The load point is the center line of the bucket pivot mounting pin on the stick. Always refer to the appropriate Operation and Maintenance Manual for specific product information.

## Lift Capacities – One-Piece Boom, 7'10" Stick

Height and radius in feet, lift capacities in lbs, work tool: none, bucket cylinder and bucket linkage installed, counterweight: 8,600 lb, heavy lift function on.

		Load at maximum reach (sticknose/bucket pin)			Load over front			Load over rear			Load over side			Load point height	
	Undercarriage configuration	10.0 ft			15.0 ft			20.0 ft						m	
20.0 ft	Free on Wheels							*8,100	6,300	5,700	*7,200	6,200	5,600	20.24	
	Fully stabilized							*8,100	*8,100	*8,100	*7,200	*7,200	*7,200		
15.0 ft	Free on Wheels				*12,400	9,900	8,900	9,100	6,300	5,700	*6,800	4,900	4,500	23.10	
	Fully stabilized				*12,400	*12,400	*12,400	*10,700	*10,700	9,600	*6,800	*6,800	*6,800		
10.0 ft	Free on Wheels				13,700	9,200	8,300	8,800	6,000	5,400	6,400	4,400	3,900	24.57	
	Fully stabilized				*14,900	*14,900	14,600	*11,600	*11,600	9,300	*6,900	*6,900	6,800		
5.0 ft	Free on Wheels				12,900	8,600	7,600	8,500	5,800	5,200	6,100	4,200	3,700	24.93	
	Fully stabilized				*17,000	*17,000	13,900	*12,500	*12,500	9,000	*7,200	*7,200	6,500		
0 ft	Free on Wheels	*9,600	*9,600	*9,600	12,500	8,200	7,300	8,300	5,600	5,000	6,300	4,300	3,800	24.25	
	Fully stabilized	*9,600	*9,600	*9,600	*17,500	*17,500	13,500	*12,700	*12,700	8,800	*8,100	*8,100	6,700		
-5.0 ft	Free on Wheels	*19,400	15,100	13,100	12,500	8,100	7,200	8,200	5,500	4,900	7,100	4,800	4,300	22.38	
	Fully stabilized	*19,400	*19,400	*19,400	*16,100	*16,100	13,400	*11,700	*11,700	8,800	9600*	*9,600	7,500		
-10.0 ft	Free on Wheels	*17,100	15,400	13,400	*12,600	8,300	7,400				*8,700	6,100	5,400	18.96	
	Fully stabilized	*17,100	*17,100	*17,100	*12,600	*12,600	*12,600				*8,700	*8,700	*8,700		

\*Limited by hydraulic rather than tipping load.

Oscillating axle needs to be locked. Weight of all lifting accessories must be subtracted from the lifting capacities. All lift capacities calculated and rated per ISO 10567:2007. Rated loads do not exceed 87% of hydraulic lift capacity or 75% of tipping load. Heavy Lift Function ON. Lifting capacities are based on the machine standing on a firm uniform supporting surface. The load point is the center line of the bucket pivot mounting pin on the stick. Always refer to the appropriate Operation and Maintenance Manual for specific product information.

# M317 Wheeled Excavator Specifications

## Lift Capacities – One-Piece Boom, 2.6 m Stick

Height and radius in meters, lift capacities in tons, work tool: none, bucket cylinder and bucket linkage installed, counterweight: 3500 kg, heavy lift function on.

		Load at maximum reach (sticknose/bucket pin)			Load over front			Load over rear			Load over side			Load point height			
	Undercarriage configuration	3.0 m			4.5 m			6.0 m			7.5 m						
																	m
6.0 m	Free on Wheels							4.05	2.80	2.55				*2.95	2.45	2.20	6.47
	Fully stabilized							*4.35	*4.35	4.30				*2.95	*2.95	*2.95	
4.5 m	Free on Wheels							4.00	2.75	2.50				*2.80	2.00	1.80	7.27
	Fully stabilized							*4.80	*4.80	4.25				*2.80	*2.80	*2.80	
3.0 m	Free on Wheels				6.05	4.05	3.60	3.85	2.65	2.35	2.75	1.85	1.65	2.60	1.75	1.60	7.69
	Fully stabilized				*6.70	*6.70	6.50	*5.25	*5.25	4.15	*3.90	*3.90	2.90	*2.85	*2.85	2.80	
1.5 m	Free on Wheels				5.70	3.75	3.30	3.70	2.50	2.25	2.70	1.80	1.60	2.55	1.70	1.50	7.79
	Fully stabilized				*7.75	*7.75	6.15	*5.70	*5.70	4.00	*4.60	4.10	2.85	*3.00	*3.00	2.70	
0 m	Free on Wheels	*4.40	*4.40	*4.40	5.50	3.55	3.15	3.60	2.40	2.15	2.65	1.75	1.55	2.60	1.75	1.55	7.58
	Fully stabilized	*4.40	*4.40	*4.40	*8.10	*8.10	5.95	*5.85	5.70	3.85	*4.05	4.05	2.80	*3.30	*3.30	2.80	
-1.5 m	Free on Wheels	*8.15	6.55	5.65	5.45	3.50	3.10	3.55	2.35	2.10				2.85	1.90	1.70	7.04
	Fully stabilized	*8.15	*8.15	*8.15	*7.60	*7.60	5.85	*5.50	*5.50	3.85				*3.95	*3.95	3.05	
-3.0 m	Free on Wheels	*8.45	6.65	5.75	5.50	3.55	3.15	3.65	2.40	2.15				3.60	2.40	2.10	6.07
	Fully stabilized	*8.45	*8.45	*8.45	*6.15	*6.15	5.90	*4.10	*4.10	3.90				*3.95	*3.95	3.85	

\*Limited by hydraulic rather than tipping load.

Oscillating axle needs to be locked. Weight of all lifting accessories must be subtracted from the lifting capacities. All lift capacities calculated and rated per ISO 10567:2007. Rated loads do not exceed 87% of hydraulic lift capacity or 75% of tipping load. Heavy Lift Function ON. Lifting capacities are based on the machine standing on a firm uniform supporting surface. The load point is the center line of the bucket pivot mounting pin on the stick. Always refer to the appropriate Operation and Maintenance Manual for specific product information.

## Lift Capacities – One-Piece Boom, 2.6 m Stick

Height and radius in meters, lift capacities in tons, work tool: none, bucket cylinder and bucket linkage installed, counterweight: 3900 kg, heavy lift function on.

		Load at maximum reach (sticknose/bucket pin)			Load over front			Load over rear			Load over side			Load point height			
	Undercarriage configuration	3.0 m			4.5 m			6.0 m			7.5 m						
																	m
6.0 m	Free on Wheels							4.30	3.00	2.70				*2.95	2.60	2.35	6.47
	Fully stabilized							*4.35	*4.35	*4.35				*2.95	*2.95	*2.95	
4.5 m	Free on Wheels							4.25	2.95	2.65				*2.80	2.15	1.90	7.27
	Fully stabilized							*4.80	*4.80	4.50				*2.80	*2.80	*2.80	
3.0 m	Free on Wheels				6.40	4.30	3.85	4.10	2.80	2.55	2.90	2.00	1.80	2.80	1.90	1.70	7.69
	Fully stabilized				*6.70	*6.70	*6.70	*5.25	*5.25	4.35	*3.90	*3.90	3.10	*2.85	*2.85	*2.85	
1.5 m	Free on Wheels				6.05	4.00	3.55	3.95	2.70	2.40	2.85	1.95	1.75	2.70	1.80	1.65	7.79
	Fully stabilized				*7.75	*7.75	6.45	*5.70	*5.70	4.20	*4.60	4.30	3.05	*3.00	*3.00	2.85	
0 m	Free on Wheels	*4.40	*4.40	*4.40	5.85	3.80	3.40	3.85	2.60	2.30	2.80	1.90	1.70	2.75	1.85	1.65	7.58
	Fully stabilized	*4.40	*4.40	*4.40	*8.10	*8.10	6.25	*5.85	*5.85	4.10	*4.05	*4.05	3.00	*3.30	*3.30	2.95	
-1.5 m	Free on Wheels	*8.15	7.00	6.05	5.80	3.75	3.35	3.80	2.55	2.25				3.05	2.05	1.85	7.04
	Fully stabilized	*8.15	*8.15	*8.15	*7.60	*7.60	6.20	*5.50	*5.50	4.05				*3.95	*3.95	3.25	
-3.0 m	Free on Wheels	*8.45	7.15	6.15	5.85	3.80	3.40	3.85	2.60	2.30				3.80	2.55	2.30	6.07
	Fully stabilized	*8.45	*8.45	*8.45	*6.15	*6.15	*6.15	*4.10	*4.10	*4.10				*3.95	*3.95	*3.95	

\*Limited by hydraulic rather than tipping load.

Oscillating axle needs to be locked. Weight of all lifting accessories must be subtracted from the lifting capacities. All lift capacities calculated and rated per ISO 10567:2007. Rated loads do not exceed 87% of hydraulic lift capacity or 75% of tipping load. Heavy Lift Function ON. Lifting capacities are based on the machine standing on a firm uniform supporting surface. The load point is the center line of the bucket pivot mounting pin on the stick. Always refer to the appropriate Operation and Maintenance Manual for specific product information.

# M317 Wheeled Excavator Specifications

## Lift Capacities – One-Piece Boom, 8'6" Stick

Height and radius in feet, lift capacities in lbs, work tool: none, bucket cylinder and bucket linkage installed, counterweight: 7,720 lb, heavy lift function on.

		Load at maximum reach (sticknose/bucket pin)			Load over front			Load over rear			Load over side			Load point height			
	Undercarriage configuration	10.0 ft			15.0 ft			20.0 ft			25.0 ft						m
20.0 ft	Free on Wheels							8,700	6,000	5,400				*6,600	5,500	5,000	21.03
	Fully stabilized							*9,000	*9,000	*9,000				*6,600	*6,600	*6,600	
15.0 ft	Free on Wheels							8,600	5,900	5,400				*6,200	4,400	4,000	23.75
	Fully stabilized							*10,400	*10,400	9,200				*6,200	*6,200	*6,200	
10.0 ft	Free on Wheels				13,000	8,700	7,800	8,300	5,700	5,100	5,900	4,000	3,600	5,800	3,900	3,500	25.20
	Fully stabilized				*14,500	*14,500	13,900	*11,400	*11,400	8,900	*7,200	*7,200	6,300	*6,200	*6,200	6,200	
5.0 ft	Free on Wheels				12,300	8,100	7,200	8,000	5,400	4,800	5,800	3,900	3,500	5,600	3,700	3,300	25.56
	Fully stabilized				*16,800	*16,800	13,200	*12,400	*12,400	8,600	*9,200	8,800	6,200	*6,600	*6,600	6,000	
0 ft	Free on Wheels	*10,200	*10,200	*10,200	11,900	7,700	6,800	7,800	5,200	4,600				5,700	3,800	3,400	24.87
	Fully stabilized	*10,200	*10,200	*10,200	*17,500	*17,500	12,700	*12,700	12,200	8,300				*7,300	*7,300	6,100	
-5.0 ft	Free on Wheels	*18,600	14,000	12,100	11,700	7,600	6,700	7,700	5,100	4,500				6,300	4,200	3,800	23.06
	Fully stabilized	*18,600	*18,600	*18,600	*16,400	*16,400	12,600	*11,900	*11,900	8,300				*8,700	*8,700	6,800	
-10.0 ft	Free on Wheels	*18,200	14,300	12,400	11,900	7,700	6,800							8,000	5,300	4,700	19.78
	Fully stabilized	*18,200	*18,200	*18,200	*13,200	*13,200	12,700							*8,700	*8,700	8,500	

\*Limited by hydraulic rather than tipping load.

Oscillating axle needs to be locked. Weight of all lifting accessories must be subtracted from the lifting capacities. All lift capacities calculated and rated per ISO 10567:2007. Rated loads do not exceed 87% of hydraulic lift capacity or 75% of tipping load. Heavy Lift Function ON. Lifting capacities are based on the machine standing on a firm uniform supporting surface. The load point is the center line of the bucket pivot mounting pin on the stick. Always refer to the appropriate Operation and Maintenance Manual for specific product information.

## Lift Capacities – One-Piece Boom, 8'6" Stick

Height and radius in feet, lift capacities in lbs, work tool: none, bucket cylinder and bucket linkage installed, counterweight: 8,600 lb, heavy lift function on.

		Load at maximum reach (sticknose/bucket pin)			Load over front			Load over rear			Load over side			Load point height			
	Undercarriage configuration	10.0 ft			15.0 ft			20.0 ft			25.0 ft						m
20.0 ft	Free on Wheels							*9,000	6,400	5,800				*6,600	5,900	5,300	21.03
	Fully stabilized							*9,000	*9,000	*9,000				*6,600	*6,600	*6,600	
15.0 ft	Free on Wheels							9,100	6,300	5,700				*6,200	4,700	4,300	23.75
	Fully stabilized							*10,400	*10,400	9,700				*6,200	*6,200	*6,200	
10.0 ft	Free on Wheels				13,700	9,300	8,300	8,800	6,100	5,500	6,200	4,300	3,800	6,200	4,200	3,800	25.20
	Fully stabilized				*14,500	*14,500	*14,500	*11,400	*11,400	9,400	*7,200	*7,200	6,600	*6,200	*6,200	*6,200	
5.0 ft	Free on Wheels				13,000	8,600	7,700	8,500	5,800	5,200	6,100	4,200	3,700	5,900	4,000	3,600	25.56
	Fully stabilized				*16,800	*16,800	13,900	*12,400	*12,400	9,100	*9,200	*9,200	6,500	*6,600	*6,600	6,300	
0 ft	Free on Wheels	*10,200	*10,200	*10,200	12,600	8,200	7,300	8,300	5,600	5,000				6,100	4,100	3,700	24.87
	Fully stabilized	*10,200	*10,200	*10,200	*17,500	*17,500	13,500	*12,700	*12,700	8,800				*7,300	*7,300	6,500	
-5.0 ft	Free on Wheels	*18,600	15,000	13,000	12,400	8,100	7,200	8,200	5,500	4,900				6,700	4,600	4,100	23.06
	Fully stabilized	*18,600	*18,600	*18,600	*16,400	*16,400	13,300	*11,900	*11,900	8,700				*8,700	*8,700	7,200	
-10.0 ft	Free on Wheels	*18,200	15,300	13,300	12,600	8,200	7,300							8,500	5,700	5,100	19.78
	Fully stabilized	*18,200	*18,200	*18,200	*13,200	*13,200	*13,200							*8,700	*8,700	*8,700	

\*Limited by hydraulic rather than tipping load.

Oscillating axle needs to be locked. Weight of all lifting accessories must be subtracted from the lifting capacities. All lift capacities calculated and rated per ISO 10567:2007. Rated loads do not exceed 87% of hydraulic lift capacity or 75% of tipping load. Heavy Lift Function ON. Lifting capacities are based on the machine standing on a firm uniform supporting surface. The load point is the center line of the bucket pivot mounting pin on the stick. Always refer to the appropriate Operation and Maintenance Manual for specific product information.

# M317 Wheeled Excavator Specifications

## Bucket Specifications and Compatibility – South America

Contact your Cat dealer for special bucket requirements.

	Width		Capacity		Weight		Fill	Free on Wheels	Fully stabilized	Free on Wheels	Fully stabilized	Free on Wheels	Fully stabilized	Free on Wheels	Fully stabilized	
	mm	in	m <sup>3</sup>	yd <sup>3</sup>	kg	lb										%
								<b>3500 mt (7,720 lb)</b>				<b>3900 mt (8,600 lb)</b>				
								<b>One-Piece Boom</b>				<b>One-Piece Boom</b>				
								<b>R2.4 (7'10")</b>		<b>R2.6 (8'6")</b>		<b>R2.4 (7'10")</b>		<b>R2.6 (8'6")</b>		
<b>Pin-On (No Quick Coupler)</b>																
GENERAL DUTY	750	30	0.49	0.64	466	1,027	100	●	●	●	●	●	●	●	●	
	1100	43	0.80	1.04	580	1,279	100	○	●	○	●	○	●	○	●	
	1200	48	0.91	1.19	625	1,378	100	◇	●	◇	●	○	●	◇	●	
Maximum load with pin-on (payload + bucket)								kg	1550	2800	1500	2700	1700	2950	1650	2850
								lb	3,417	6,173	3,307	5,952	3,748	6,504	3,638	6,283
								<b>3500 mt (7,720 lb)</b>				<b>3900 mt (8,600 lb)</b>				
								<b>One-Piece Boom</b>				<b>One-Piece Boom</b>				
								<b>R2.4 (7'10")</b>		<b>R2.6 (8'6")</b>		<b>R2.4 (7'10")</b>		<b>R2.6 (8'6")</b>		
<b>With Pin Grabber Coupler</b>																
GENERAL DUTY	750	30	0.49	0.64	466	1,027	100	⊖	●	○	●	⊕	●	⊕	●	
	1100	43	0.80	1.04	580	1,279	100	X	●	X	●	◇	●	◇	●	
	1200	48	0.91	1.19	625	1,378	100	X	●	X	⊕	X	●	X	●	
Maximum load with coupler (payload + bucket)								kg	1210	2460	1160	2360	1360	2610	1310	2510
								lb	2,668	5,423	2,557	5,203	2,998	5,754	2,888	5,534

**Maximum Material Density:**

- 2100 kg/m<sup>3</sup> (3,500 lb/yd<sup>3</sup>)
- ⊕ 1800 kg/m<sup>3</sup> (3,000 lb/yd<sup>3</sup>)
- ⊖ 1500 kg/m<sup>3</sup> (2,500 lb/yd<sup>3</sup>)
- 1200 kg/m<sup>3</sup> (2,000 lb/yd<sup>3</sup>)
- ◇ 900 kg/m<sup>3</sup> (1,500 lb/yd<sup>3</sup>)
- X Not Recommended

The above loads are in compliance with hydraulic excavator standard EN474-5:2006+A3:2013, they do not exceed 87% of hydraulic lifting capacity or 75% of tipping capacity with front linkage fully extended at ground line with bucket curled. Capacity based on ISO 7451:2007.

Caterpillar recommends using appropriate work tools to maximize the value customers receive from our products. Use of work tools, including buckets, which are outside of Caterpillar's recommendations or specifications for weight, dimensions, flows, pressures, etc. may result in less-than-optimal performance, including but not limited to reductions in production, stability, reliability, and component durability. Improper use of a work tool resulting in sweeping, prying, twisting and/or catching of heavy loads will reduce the life of the boom and stick.

# M317 Wheeled Excavator Specifications

## Bucket Specifications and Compatibility – Africa Middle East, Eurasia

Contact your Cat dealer for special bucket requirements.

	Width		Capacity		Weight		Fill	Free on Wheels	Fully stabilized	Free on Wheels	Fully stabilized	Free on Wheels	Fully stabilized	Free on Wheels	Fully stabilized	
	mm	in	m <sup>3</sup>	yd <sup>3</sup>	kg	lb	%	Free on Wheels	Fully stabilized	Free on Wheels	Fully stabilized	Free on Wheels	Fully stabilized	Free on Wheels	Fully stabilized	
								<b>3500 mt (7,720 lb)</b>				<b>3900 mt (8,600 lb)</b>				
								<b>One-Piece Boom</b>				<b>One-Piece Boom</b>				
								<b>R2.4 (7'10")</b>		<b>R2.6 (8'6")</b>		<b>R2.4 (7'10")</b>		<b>R2.6 (8'6")</b>		
<b>Pin-On (No Quick Coupler)</b>																
GENERAL DUTY	750	30	0.49	0.64	466	1,027	100	●	●	●	●	●	●	●	●	
	1100	43	0.80	1.04	580	1,279	100	○	●	○	●	○	●	○	●	
	1200	48	0.91	1.19	625	1,378	100	◇	●	◇	●	○	●	◇	●	
Maximum load with pin-on (payload + bucket)								kg	1550	2800	1500	2700	1700	2950	1650	2850
								lb	3,417	6,173	3,307	5,952	3,748	6,504	3,638	6,283
								<b>3500 mt (7,720 lb)</b>				<b>3900 mt (8,600 lb)</b>				
								<b>One-Piece Boom</b>				<b>One-Piece Boom</b>				
								<b>R2.4 (7'10")</b>		<b>R2.6 (8'6")</b>		<b>R2.4 (7'10")</b>		<b>R2.6 (8'6")</b>		
<b>With Pin Grabber Coupler</b>																
GENERAL DUTY	750	30	0.49	0.64	466	1,027	100	⊖	●	○	●	⊕	●	⊕	●	
	1100	43	0.80	1.04	580	1,279	100	X	●	X	●	◇	●	◇	●	
	1200	48	0.91	1.19	625	1,378	100	X	●	X	⊕	X	●	X	●	
Maximum load with coupler (payload + bucket)								kg	1210	2460	1160	2360	1360	2610	1310	2510
								lb	2,668	5,423	2,557	5,203	2,998	5,754	2,888	5,534
								<b>3500 mt (7,720 lb)</b>				<b>3900 mt (8,600 lb)</b>				
								<b>One-Piece Boom</b>				<b>One-Piece Boom</b>				
								<b>R2.4 (7'10")</b>		<b>R2.6 (8'6")</b>		<b>R2.4 (7'10")</b>		<b>R2.6 (8'6")</b>		
<b>With CW20 Coupler</b>																
GENERAL DUTY	750	30	0.49	0.64	452	996	100	⊕	●	⊖	●	●	●	●	●	
	1100	43	0.80	1.04	562	1,238	100	◇	●	◇	●	○	●	◇	●	
	1200	48	0.90	1.18	607	1,338	100	X	●	X	●	◇	●	◇	●	
Maximum load with coupler (payload + bucket)								kg	1330	2580	1280	2480	1480	2730	1430	2630
								lb	2,932	5,688	2,822	5,467	3,263	6,019	3,153	5,798

**Maximum Material Density:**

- 2100 kg/m<sup>3</sup> (3,500 lb/yd<sup>3</sup>)
- ⊕ 1800 kg/m<sup>3</sup> (3,000 lb/yd<sup>3</sup>)
- ⊖ 1500 kg/m<sup>3</sup> (2,500 lb/yd<sup>3</sup>)
- 1200 kg/m<sup>3</sup> (2,000 lb/yd<sup>3</sup>)
- ◇ 900 kg/m<sup>3</sup> (1,500 lb/yd<sup>3</sup>)
- X Not Recommended

The above loads are in compliance with hydraulic excavator standard EN474-5:2006+A3:2013, they do not exceed 87% of hydraulic lifting capacity or 75% of tipping capacity with front linkage fully extended at ground line with bucket curled. Capacity based on ISO 7451:2007.

Caterpillar recommends using appropriate work tools to maximize the value customers receive from our products. Use of work tools, including buckets, which are outside of Caterpillar's recommendations or specifications for weight, dimensions, flows, pressures, etc. may result in less-than-optimal performance, including but not limited to reductions in production, stability, reliability, and component durability. Improper use of a work tool resulting in sweeping, prying, twisting and/or catching of heavy loads will reduce the life of the boom and stick.

# M317 Wheeled Excavator Specifications

## Bucket Specifications and Compatibility – SE Asia

Contact your Cat dealer for special bucket requirements.

	Width		Capacity		Weight		Fill	Free on Wheels	Fully stabilized	Free on Wheels	Fully stabilized	Free on Wheels	Fully stabilized	Free on Wheels	Fully stabilized		
	mm	in	m <sup>3</sup>	yd <sup>3</sup>	kg	lb										%	
								<b>3500 mt (7,720 lb)</b>				<b>3900 mt (8,600 lb)</b>					
								<b>One-Piece Boom</b>				<b>One-Piece Boom</b>					
								<b>R2.4 (7'10")</b>		<b>R2.6 (8'6")</b>		<b>R2.4 (7'10")</b>		<b>R2.6 (8'6")</b>			
<b>Pin-On (No Quick Coupler)</b>								○	●	◇	●	○	●	○	●		
GENERAL DUTY (GD)	1200	48	0.80	1.04	619	1,365	100	○	●	◇	●	○	●	○	●		
								kg		1550		2800		1500		2700	
								lb		3,417		6,173		3,307		5,952	
										1700		2950		1650		2850	
										3,748		6,504		3,638		6,283	
								Maximum load with pin-on (payload + bucket)									
								<b>3500 mt (7,720 lb)</b>				<b>3900 mt (8,600 lb)</b>					
								<b>One-Piece Boom</b>				<b>One-Piece Boom</b>					
								<b>R2.4 (7'10")</b>		<b>R2.6 (8'6")</b>		<b>R2.4 (7'10")</b>		<b>R2.6 (8'6")</b>			
<b>With Pin Grabber Coupler</b>								X	●	X	●	◇	●	◇	●		
GENERAL DUTY (GD)	1200	48	0.80	1.04	619	1,365	100	X	●	X	●	◇	●	◇	●		
								kg		1210		2460		1160		2360	
								lb		2,668		5,423		2,557		5,203	
										1360		2610		1310		2510	
										2,998		5,754		2,888		5,534	
								Maximum load with coupler (payload + bucket)									

**Maximum Material Density:**

- 2100 kg/m<sup>3</sup> (3,500 lb/yd<sup>3</sup>)
- 1200 kg/m<sup>3</sup> (2,000 lb/yd<sup>3</sup>)
- ◇ 900 kg/m<sup>3</sup> (1,500 lb/yd<sup>3</sup>)
- X Not Recommended

The above loads are in compliance with hydraulic excavator standard EN474-5:2006+A3:2013, they do not exceed 87% of hydraulic lifting capacity or 75% of tipping capacity with front linkage fully extended at ground line with bucket curled. Capacity based on ISO 7451:2007.

Caterpillar recommends using appropriate work tools to maximize the value customers receive from our products. Use of work tools, including buckets, which are outside of Caterpillar's recommendations or specifications for weight, dimensions, flows, pressures, etc. may result in less-than-optimal performance, including but not limited to reductions in production, stability, reliability, and component durability. Improper use of a work tool resulting in sweeping, prying, twisting and/or catching of heavy loads will reduce the life of the boom and stick.

# M317 Wheeled Excavator Specifications

## Attachments Offering Guide – South America

Not all Attachments are available in all regions. Consult your Cat dealer for configurations available in your region.

Match    
  \* Working range front only    
  No Match    
  1800 kg/m<sup>3</sup> (3,000 lb/yd<sup>3</sup>)    
  1200 kg/m<sup>3</sup> (2,000 lb/yd<sup>3</sup>)

### PIN-ON ATTACHMENTS

Undercarriage		Rear Outrigger; Front Blade			
Counterweight		3.5 mt (7,720 lb)		3.9 mt (8,600 lb)	
Boom Type		One-Piece		One-Piece	
Stick Length		2.40 m (7'10")	2.60 m (8'6")	2.40 m (7'10")	2.60 m (8'6")
Hydraulic Hammers	H110 S	✓	✓	✓	✓
	H115 GC	✓	✓	✓	✓
	H115 GC S	✓	✓	✓	✓
	H115 S	✓	✓	✓	✓
	H120 GC	✓	✓	✓	✓
	H120 GC Side Mount	✓	✓	✓	✓
	H120 S	✓	✓	✓	✓
Demolition and Sorting Grapples	G314	✓	✓	✓	✓
	G318	✓		✓	
Mobile Scrap and Demolition Shears	S3015 Flat Top	✓	✓	✓	✓
Compactors (Vibratory Plate)	CVP75	✓	✓	✓	✓
Orange Peel Grapples	GSH420-500	●	●	●	●
	GSH420-600	●	●	●	●
	GSH420-750	●	●	●	●
	GSH520-500	●	●	●	●
	GSH520-600	●	●	●	●
	GSH520-750	●	○	●	○

### CAT PIN GRABBER COUPLER ATTACHMENTS

Undercarriage		Rear Outrigger; Front Blade			
Counterweight		3.5 mt (7,720 lb)		3.9 mt (8,600 lb)	
Boom Type		One-Piece		One-Piece	
Stick Length		2.40 m (7'10")	2.60 m (8'6")	2.40 m (7'10")	2.60 m (8'6")
Hydraulic Hammers	H110 S	✓	✓	✓	✓
	H115 GC	✓	✓	✓	✓
	H115 GC S	✓	✓	✓	✓
	H115 S	✓	✓	✓	✓
	H120 GC Side Mount	✓		✓	
	H120 S	✓	✓	✓	✓
Demolition and Sorting Grapples	G314	✓	✓	✓	✓
Mobile Scrap and Demolition Shears	S3015 Flat Top	✓	✓	✓	✓
Compactors (Vibratory Plate)	CVP75	✓	✓	✓	✓

# M317 Wheeled Excavator Specifications

## Attachments Offering Guide – Africa Middle East, Eurasia

Not all Attachments are available in all regions. Consult your Cat dealer for configurations available in your region.

Match    
  No Match    
  \* Working range front only    
  1800 kg/m<sup>3</sup> (3,000 lb/yd<sup>3</sup>)    
  1200 kg/m<sup>3</sup> (2,000 lb/yd<sup>3</sup>)    
  600 kg/m<sup>3</sup> (1,000 lb/yd<sup>3</sup>)

### PIN-ON ATTACHMENTS

Undercarriage		Rear Outrigger; Front Blade			
		3.5 mt (7,720 lb)		3.9 mt (8,600 lb)	
Counterweight		One-Piece		One-Piece	
Boom Type		One-Piece		One-Piece	
Stick Length		2.40 m (7'10")	2.60 m (8'6")	2.40 m (7'10")	2.60 m (8'6")
Hydraulic Hammers	H110 S	✓	✓	✓	✓
	H115 GC	✓	✓	✓	✓
	H115 GC S	✓	✓	✓	✓
	H115 S	✓	✓	✓	✓
	H120 GC	✓	✓	✓	✓
	H120 GC Side Mount	✓	✓	✓	✓
	H120 S	✓	✓	✓	✓
Demolition and Sorting Grapples	G313 GC	✓	✓	✓	✓
	G314	✓	✓	✓	✓
	G317 GC	✓	✓	✓	✓
	G318	✓		✓	
Mobile Scrap and Demolition Shears	S3015 Flat Top	✓	✓	✓	✓
Compactors (Vibratory Plate)	CVP75	✓	✓	✓	✓
Orange Peel Grapples	GSH420-500	●	●	●	●
	GSH420-600	●	●	●	●
	GSH420-750	●	●	●	●
	GSH520-500	●	●	●	●
	GSH520-600	●	●	●	●
	GSH520-750	●	○	●	○
	GSV420-400	●	●	●	●
	GSV420-500	●	●	●	●
	GSV420-600	●	●	●	●
	GSV420-750	●	●	●	●
	GSV420-1250	◇	◇	◇	◇
	GSV520-400	●	●	●	●
	GSV520-500	●	●	●	●
	GSV520-600	●	●	●	●
	GSV520-750	●	○	●	○
	GSV520-1250	◇	◇	◇	◇
	GSV520 GC-400	●	●	●	●
	GSV520 GC-500	●	●	●	●
	GSV520 GC-600	●	●	●	●
	GSV520 GC-750	●	○	●	○
GSV520 GC-1250	◇	◇	◇	◇	

(continued on next page)



# M317 Wheeled Excavator Specifications

## Attachments Offering Guide – Africa Middle East, Eurasia (continued)

Not all Attachments are available in all regions. Consult your Cat dealer for configurations available in your region.

Match

\* Working range front only

No Match

### CAT PIN GRABBER COUPLER ATTACHMENTS

Undercarriage		Rear Outrigger; Front Blade			
Counterweight		3.5 mt (7,720 lb)		3.9 mt (8,600 lb)	
Boom Type		One-Piece		One-Piece	
Stick Length		2.40 m (7'10")	2.60 m (8'6")	2.40 m (7'10")	2.60 m (8'6")
Hydraulic Hammers	H110 S	✓	✓	✓	✓
	H115 GC	✓	✓	✓	✓
	H115 GC S	✓	✓	✓	✓
	H115 S	✓	✓	✓	✓
	H120 GC Side Mount	✓		✓	
	H120 S	✓	✓	✓	✓
Demolition and Sorting Grapples	G313 GC	✓	✓	✓	✓
	G314	✓	✓	✓	✓
	G317 GC	✓		✓	
Mobile Scrap and Demolition Shears	S3015 Flat Top	✓	✓	✓	✓
Compactors (Vibratory Plate)	CVP75	✓	✓	✓	✓

### CW-20s DEDICATED COUPLER ATTACHMENTS

Undercarriage		Rear Outrigger; Front Blade			
Counterweight		3.5 mt (7,720 lb)		3.9 mt (8,600 lb)	
Boom Type		One-Piece		One-Piece	
Stick Length		2.40 m (7'10")	2.60 m (8'6")	2.40 m (7'10")	2.60 m (8'6")
Hydraulic Hammers	H110 S	✓	✓	✓	✓
	H115 GC	✓	✓	✓	✓
	H115 GC S	✓	✓	✓	✓
	H115 S	✓	✓	✓	✓
	H120 S	✓	✓	✓	✓
Demolition and Sorting Grapples	G313 GC	✓	✓	✓	✓
	G314	✓	✓	✓	✓
	G317 GC	✓		✓	
Mobile Scrap and Demolition Shears	S3015 Flat Top	✓	✓	✓	✓
Compactors (Vibratory Plate)	CVP75	✓	✓	✓	✓

(continued on next page)

# M317 Wheeled Excavator Specifications

## Attachments Offering Guide – Africa Middle East, Eurasia (continued)

Not all Attachments are available in all regions. Consult your Cat dealer for configurations available in your region.

Match       \* Working range front only       No Match

### CW-20 DEDICATED COUPLER ATTACHMENTS

Undercarriage		Rear Outrigger; Front Blade			
		3.5 mt (7,720 lb)		3.9 mt (8,600 lb)	
Counterweight		One-Piece		One-Piece	
Boom Type		One-Piece		One-Piece	
Stick Length		2.40 m (7'10")	2.60 m (8'6")	2.40 m (7'10")	2.60 m (8'6")
Hydraulic Hammers	H110 S	✓	✓	✓	✓
	H115 GC	✓	✓	✓	✓
	H115 GC S	✓	✓	✓	✓
	H115 S	✓	✓	✓	✓
	H120 S	✓	✓	✓	✓
Demolition and Sorting Grapples	G313 GC	✓	✓	✓	✓
	G313 GC Fixed CAN	✓	✓	✓	✓
	G314	✓	✓	✓	✓
	G317 GC	✓		✓	
	G317 GC Fixed CAN	✓		✓	
Mobile Scrap and Demolition Shears	S3015 Flat Top	✓	✓	✓	✓
Compactors (Vibratory Plate)	CVP75	✓	✓	✓	✓

# M317 Wheeled Excavator Specifications

## Attachments Offering Guide – SE Asia (India, Indonesia, Singapore, and Thailand)

Not all Attachments are available in all regions. Consult your Cat dealer for configurations available in your region.

Match

\* Working range front only

No Match

### PIN-ON ATTACHMENTS

Undercarriage		Rear Outrigger; Front Blade			
		3.5 mt (7,720 lb)		3.9 mt (8,600 lb)	
Counterweight		One-Piece		One-Piece	
Boom Type		One-Piece		One-Piece	
Stick Length		2.40 m (7'10")	2.60 m (8'6")	2.40 m (7'10")	2.60 m (8'6")
Hydraulic Hammers	H110 S	✓	✓	✓	✓
	H115 GC	✓	✓	✓	✓
	H115 GC S	✓	✓	✓	✓
	H115 S	✓	✓	✓	✓
	H120 GC	✓	✓	✓	✓
	H120 GC Side Mount	✓	✓	✓	✓
	H120 S	✓	✓	✓	✓
Compactors (Vibratory Plate)	CVP75	✓	✓	✓	✓

# M317 Standard and Optional Equipment

## Standard and Optional Equipment

Standard and optional equipment may vary. Consult your Cat dealer for details.

	Standard	Optional		Standard	Optional
<b>BOOM, STICKS AND LINKAGES</b>			<b>HYDRAULIC SYSTEM</b>		
One-Piece Boom		✓	Heavy lift mode	✓	
2.4 m (7'10") stick		✓	Separate swing pump	✓	
2.6 m (8'6") stick		✓	Stick regeneration circuit	✓	
Bucket linkage with or without diverter valve		✓	Variable displacement, load sensing hydraulic system	✓	
<b>ELECTRICAL SYSTEM</b>			Automatic swing brake	✓	
Alternator, 75 A	✓		Capability to add auxiliary hydraulic circuits	✓	
Boom working light	✓		Anti drift devices for boom, stick and bucket*	✓	
Cab mounted working lights, front and rear	✓		Cat XT-6 ES hoses	✓	
Cab interior light	✓		Adjustable hydraulic sensitivity	✓	
Main shut-off switch	✓		Oil cooler	✓	
Roading and indicator lights, front and rear	✓		Hydraulic mineral oil, Cat HYDO™ Advanced 10 oil	✓	
Maintenance free batteries	✓		Anti-drift valve for bucket	✓ <sup>1</sup>	
Electrical refueling pump		✓	Auxiliary boom and stick lines		✓
<b>ENGINE</b>			Medium pressure control circuit		✓
Cat C4.4 engine – meets U.S. EPA Tier 3 and EU Stage IIIA emission standards.	✓		Hammer circuit		✓
Power mode selector	✓		One/Two-way high pressure for hammer application		✓
Air filter/fuel filter	✓		Programmable flow for up to 10 work tools		✓
Automatic engine speed control	✓		Quick coupler control		✓
Automatic starting aid	✓		Quick disconnect for hydraulic lines		✓
Fuel/water separator with level indicator	✓				
Muffler	✓				
Work up to 3000 m (9,842 ft) above sea level without engine power de-rating	✓				

(continued on next page)

<sup>1</sup>Available for China, Asia and Indonesia only

# M317 Standard and Optional Equipment

## Standard and Optional Equipment *(continued)*

Standard and optional equipment may vary. Consult your Cat dealer for details.

	Standard	Optional		Standard	Optional
<b>SAFETY AND SECURITY</b>			<b>UNDERCARRIAGE AND STRUCTURES</b>		
Camera mounted on counterweight	✓		All wheel drive	✓	
Mirrors, frame and cab	✓		Creep speed	✓	
Travel alarm	✓		Heavy-duty axles, advanced disc brake system and travel motor, adjustable braking force	✓	
Travel alarm with three selectable modes		✓	Oscillating front axle, lockable, with remote greasing point	✓	
Signal/warning horn	✓		Two-piece drive shaft	✓	
Rotating beacon on cab and chassis		✓	Two speed hydrostatic transmission	✓	
<b>SERVICE AND MAINTENANCE</b>			Full hydraulic steering with emergency capability	✓	
Scheduled Oil Sampling (S·O·S <sup>SM</sup> ) ports	✓		Parking brake	✓	
Caterpillar Datalink and Electronic Technician capability	✓		Wide steps, left and right	✓	
Door locks and cab locks with Caterpillar one-key security system	✓		Two tool boxes in undercarriage, left and right	✓	
<b>TECHNOLOGY</b>			10.00-20 dual pneumatic tires		✓
Cat Product Link™	✓		10.00-20 dual pneumatic tires with road profile		✓
			Rear outrigger/front blade (radial) undercarriage		✓
			Steel fenders		✓
			Counterweight 3500 kg (7,716 lb)	✓	
			Counterweight 3900 kg (8,598 lb)		✓

# M317 Cab Options

## Cab Options

Adjustable armrests	●
Ash tray with 24V cigarette lighter	●
Beverage cup/can holder/bottle holder	●
Bolt-on operator protective guards (OPG) capability	●
Bottom mounted, intermittent, parallel wiper and washer	●
Instrument panel and gauges with full color graphical display	●
Interior lighting	●
Joysticks, pilot operated	●
Left side console, tiltable, with lock-out for all controls	●
Mounting provisions for radio and speakers	●
Air conditioner heater and defroster	●
Power supply, 12V-7A	●
Rear window, emergency exit	●
Seat belt	●
Skylight	●
Steering column, tiltable	●
Storage compartment (suitable for lunch box)	●
Sunshade for windshield and skylight	●
Front and top operator protective guards (OPG)	○
CD/MP3 Radio (12V) at rear location including speakers and 12V converter	○
Adjustable seat	○
Windshield (70/30 split, openable)	○
High pressure hammer pedal	○

● Standard

○ Optional



For more complete information on Cat products, dealer services, and industry solutions, visit us on the web at [www.cat.com](http://www.cat.com)

© 2024 Caterpillar  
All rights reserved

Materials and specifications are subject to change without notice. Featured machines in photos may include additional equipment. See your Cat dealer for available options.

CAT, CATERPILLAR, LET'S DO THE WORK, their respective logos, "Caterpillar Corporate Yellow," the "Power Edge" and Cat "Modern Hex" trade dress as well as corporate and product identity used herein, are trademarks of Caterpillar and may not be used without permission.

AEXQ3714 (01-2024)  
Build Number: 04B  
(S Am, AME,  
Eurasia, SE Asia)

