



M320

Wheeled Excavator

Technical Specifications

Configurations and features may vary by region. Please consult your Cat® dealer for availability in your area.

Table of Contents

Specifications	2
Engine	2
Transmission	2
Service Refill Capacities	2
Swing Mechanism	2
Undercarriage	2
Operating Weights	3
Hydraulic System	3
Tires	3
Dozer Blade	3
Emissions and Safety	3
Standards	4
Sound Performance	4
Air Conditioning System	4
Dimensions	5
Undercarriage Dimensions	6
Working Ranges	7
Lift Capacities:	
One-Piece Boom, 2.5 m Stick	8
One-Piece Boom, 8'2" Stick	8
One-Piece Boom, 2.8 m Stick	9
One-Piece Boom, 9'2" Stick	9
Bucket Specifications and Compatibility:	
South America	10
Africa Middle East, Eurasia	11
SE Asia	12
Attachments Offering Guide:	
South America	13
Africa Middle East, Eurasia	14
SE Asia (India, Indonesia, Singapore, and Thailand)	18
Standard and Optional Equipment	19
Cab Options	21

M320 Wheeled Excavator Specifications

Engine

Engine Model	Cat® C7.1	
Maximum Gross Power		
ISO 14396	128.8 kW	173 hp
ISO 14396 (DIN)	175 hp (metric)	
Maximum Net Power		
ISO 9249	123.5 kW	166 hp
ISO 9249 (DIN)	168 hp (metric)	
Bore	105 mm	4.1 in
Stroke	135 mm	5.3 in
Displacement	7.0 L	427.8 in ³
Number of Cylinders	6	

- Meets U.S. EPA Tier 3 and EU Stage IIIA emission standards.
- Net power advertised is the power available at the flywheel when engine is equipped with fan, air cleaner, Clean Emission Module (CEM) exhaust gas aftertreatment, alternator, and cooling fan running at intermediate speed.
- Recommended for use up to 3000 m (9,840 ft) altitude with engine power derate above 3000 m (9,840 ft).
- Rated speed 2,000 rpm.

Transmission

Forward/Reverse		
1st Gear	8 km/h	5.0 mph
2nd Gear	37 km/h	23.0 mph
Creeper Speed		
1st Gear	3.0 km/h	1.9 mph
2nd Gear	13 km/h	8.1 mph
Drawbar Pull	99 kN	22,256 lbf
Maximum Gradeability at (19 000 kg/41,890 lb)	60%	

Service Refill Capacities

Fuel Tank (total capacity)	385 L	101.7 gal
Cooling System	37 L	9.6 gal
Engine Oil	19 L	4.9 gal
Hydraulic Tank	170 L	44.9 gal
Hydraulic System (including tank)	270 L	71 gal
Rear Axle Housing (differential)	14 L	3.7 gal
Front Steering Axle (differential)	10.5 L	2.8 gal
Final Drive (each)	2.5 L	0.7 gal
Powershift Transmission	2.5 L	0.7 gal

Swing Mechanism

Maximum Swing Speed	9.2 rpm	
Maximum Swing Torque	43.4 kN-m	32,116 lbf-ft

Undercarriage

Ground Clearance	370 mm	14.6 in
Maximum Steering Angle	35°	
Oscillation Axle Angle	± 8.5°	
Minimum Turning Radius		
Outside of Tire	6400 mm	21.0 ft
End of One-Piece Boom	8300 mm	27.2 ft

M320 Wheeled Excavator Specifications

Operating Weights*

Minimum	19 000 kg	41,890 lb
Maximum	19 500 kg	42,990 lb

Typical configurations:

One-Piece Boom		
Front Dozer, Rear Outriggers	19 300 kg	42,550 lb

Sticks**		
Medium 2500 mm (8'2")	930 kg	2,050 lb
Long 2800 mm (9'2")	970 kg	2,140 lb

Counterweight		
Standard	4000 kg	8,820 lb

*Operating weight includes medium stick, 4000 kg (8,820 lb) counterweight, full fuel tank, operator, 245 kg (540 lb) quick coupler, 695 kg (1,532 lb) bucket and dual pneumatic tires. Weight varies depending on configuration.

**Includes cylinder, bucket linkage, pins and standard hydraulic lines.

Hydraulic System

Maximum Pressure – Implement Circuit		
Normal	35 000 kPa	5,076 psi
Heavy Lift	37 000 kPa	5,366 psi
Travel Circuit	35 000 kPa	5,076 psi

Maximum Pressure – Auxiliary Circuit		
High Pressure	35 000 kPa	5,076 psi
Medium Pressure	18 500 kPa	2,683 psi
Swing Mechanism	31 000 kPa	4,496 psi

Maximum Flow		
Implements	280 L/min	74 gal/min
Travel Circuit	280 L/min	74 gal/min

Auxiliary Circuit		
High Pressure	250 L/min	66.0 gal/min
Medium Pressure	49 L/min	12.9 gal/min
Swing Mechanism	112 L/min	29.6 gal/min

Cylinders		
Boom Cylinder – Bore	130 mm	0'5"
Boom Cylinder – Stroke	906 mm	2'12"
Stick Cylinder – Bore	130 mm	0'5"
Stick Cylinder – Stroke	1205 mm	3'11"
Bucket Cylinder – Bore	110 mm	0'4"
Bucket Cylinder – Stroke	1055 mm	3'6"

Tires

Standard	10.00-20 (dual pneumatic)
----------	---------------------------

Dozer Blade

Blade Type	Parallel	
Width	2550 mm	8'4"
Blade Roll-Over Height	576 mm	1'11"
Blade Total Height	610 mm	2'0"
Maximum Lowering Depth From Ground	120 mm	0'5"
Maximum Raising Height Above Ground	475 mm	1'7"

Emissions and Safety

Engine Emissions	Tier 3 and EU Stage IIIA	
Vibration Levels		
Maximum Hand/Arm (ISO 5349-2001)	<2.5 m/s ²	<8.2
Maximum Whole Body (ISO/TR 25398:2006)	<0.5 m/s ²	<1.6
Seat Transmissibility Factor (ISO 7096:2000-spectral class EM5)	<0.7	

M320 Wheeled Excavator Specifications

Standards

Brakes	ISO 3450:2011
Cab/Operator Protective Guards (OPG)	Falling Object Protective Structure (FOPS) meets FOPS criteria ISO 10262:1998 and SAE J1356:2008
Cab/Sound Levels	Meets appropriate standards as listed below

Sound Performance

External Sound ISO 6395:2008	103 dB(A)
Internal Sound ISO 6396:2008	74 dB(A)

- External Sound – The labelled spectator sound power level represents the Guaranteed Value per 2000/14/EC amended by 2005/88/EC, when properly equipped, and is measured according to the test procedures and conditions specified in ISO 6395:2008. The measurements were conducted at 70% of the maximum engine cooling fan speed.
- Internal Sound – The operator sound pressure level is measured according to the test procedures and conditions specified in ISO 6396:2008 for a cab offered by Caterpillar, when properly installed and maintained and tested with the door and windows closed. The measurements were conducted at 70% of the maximum engine cooling fan speed.
- Hearing protection may be needed when operating with an open operator station and cab (when not properly maintained for doors/windows open) for extended periods or in noisy environment(s).

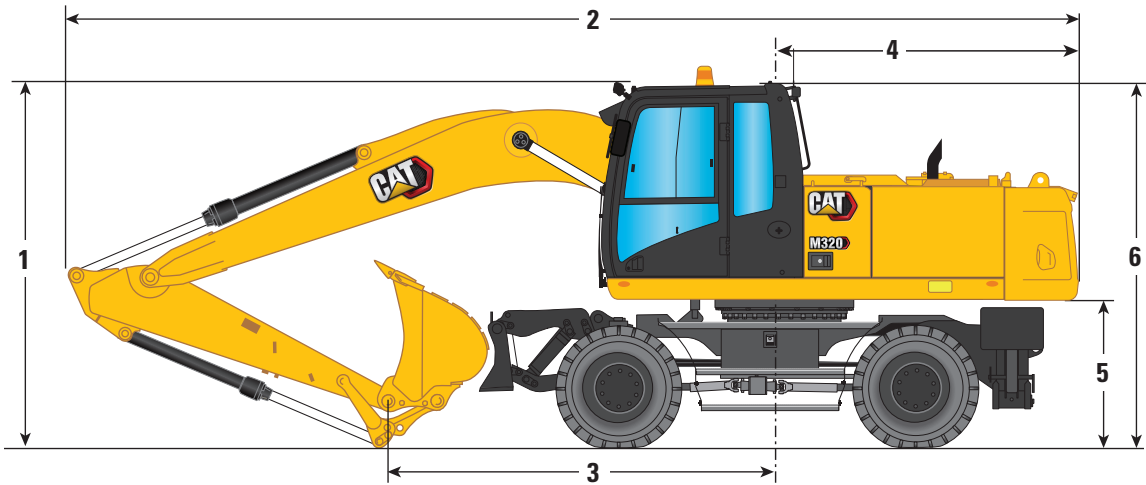
Air Conditioning System

The air conditioning system on this machine contains the fluorinated greenhouse gas refrigerant R134a (Global Warming Potential = 1430). The system contains 0.85 kg of refrigerant, which has a CO₂ equivalent of 1.216 metric tonnes.

M320 Wheeled Excavator Specifications

Dimensions

All Dimensions are approximate. Values are with 10.00-20 Dual Pneumatic Tires.



Boom Option

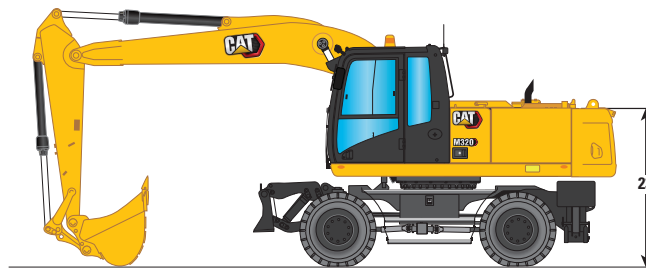
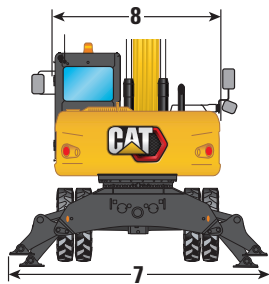
One-Piece Boom 5350 mm (17'7")

Stick Options

2.5 m (8'2")

2.8 m (9'2")

Stick Options	2.5 m (8'2")	2.8 m (9'2")
1 Shipping Height with OPG (highest point between boom and cab)	3300 mm (10'10")	3300 mm (10'10")
2 Shipping Length	8960 mm (29'5")	8950 mm (29'4")
3 Support Point	3640 mm (11'11")	3500 mm (11'6")
4 Tail Swing Radius	2565 mm (8'5")	2565 mm (8'5")
5 Counterweight Clearance	1280 mm (4'2")	1280 mm (4'2")
6 Cab Height		
No OPG	3170 mm (10'5")	3170 mm (10'5")
With OPG	3260 mm (10'8")	3260 mm (10'8")
Overall Machine Width	2550 mm (8'4")	2550 mm (8'4")
Width with Outriggers on Ground	3821 mm (12'6")	3821 mm (12'6")
Width with Outriggers Up	2550 mm (8'4")	2550 mm (8'4")
Width with Blade	2550 mm (8'4")	2550 mm (8'4")
7 Width with Outriggers Fully Down	3650 mm (12'0")	3260 mm (10'8")
23 Enclosure Height (doors)	2257 mm (7'5")	2257 mm (7'5")
8 Upperframe Width	2540 mm (8'4")	2540 mm (8'4")

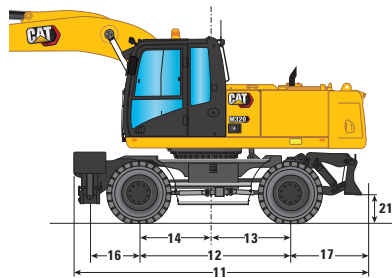
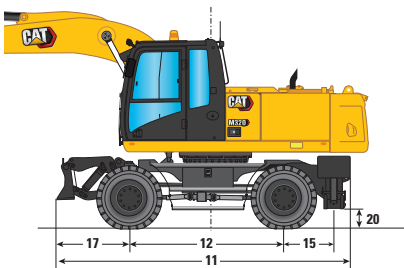
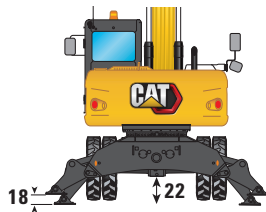


M320 Wheeled Excavator Specifications

Undercarriage Dimensions

All Dimensions are approximate.

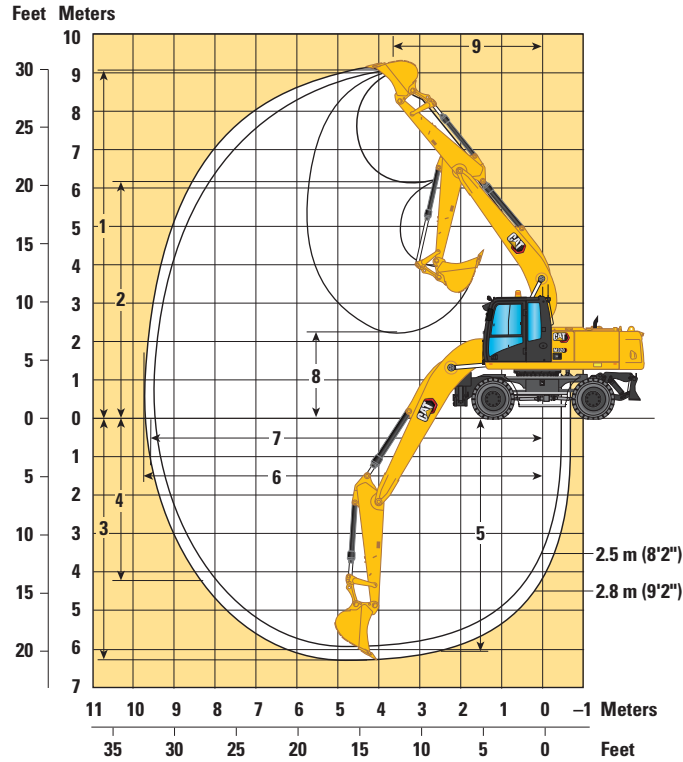
Undercarriage	Rear Blade/Front Outrigger	Rear Outrigger/Front Blade
11 Overall Undercarriage Length (blade parallel)	4925 mm (16'2")	4880 mm (16'0")
12 Wheel Base	2600 mm (8'6")	2600 mm (8'6")
13 Swing Bearing Center to Rear Axle	1150 mm (3'9")	1150 mm (3'9")
14 Swing Bearing Center to Front Axle	1450 mm (4'9")	1450 mm (4'9")
15 Rear Axle to Rear Outrigger (mid)	—	830 mm (2'9")
16 Front Axle to Front Outrigger (mid)	875 mm (2'10")	—
17 Rear Axle to Parallel Blade (end)	—	1175 mm (3'10")
Front Axle to Parallel Blade (end)	1175 mm (3'10")	—
18 Maximum Outrigger Depth	120 mm (5")	120 mm (5")
19 Blade Width	2540 mm (8'4")	2540 mm (8'4")
Maximum Blade Depth	120 mm (5")	120 mm (5")
Ground Clearance		
Lowest Step Clearance	455 mm (1'6")	455 mm (1'6")
20 Outrigger Clearance	325 mm (1'0")	325 mm (1'0")
21 Blade Clearance (parallel)	495 mm (1'7")	495 mm (1'7")
22 Axle Clearance	370 mm (10")	370 mm (10")



M320 Wheeled Excavator Specifications

Working Ranges

All Dimensions are approximate. Values are with 10.00-20 Dual Pneumatic Tires.



Boom Option	One-Piece Boom	
	2.5 m (8'2")	2.8 m (9'2")
Stick Options		
1 Maximum Digging Height	8940 mm (29'4")	9095 mm (29'10")
2 Maximum Dump Height	6140 mm (20'2")	6290 mm (20'8")
3 Maximum Digging Depth	5980 mm (19'7")	6280 mm (20'7")
4 Maximum Vertical Wall Digging Depth	3935 mm (12'11")	4225 mm (13'10")
5 Maximum Depth Cut for 2440 mm (8 ft) Level Bottom	5755 mm (18'11")	6070 mm (19'11")
6 Maximum Reach	9470 mm (31'1")	9750 mm (31'11")
7 Maximum Reach at Ground Line	9295 mm (30'6")	9580 mm (31'5")
8 Minimum Loading Height	2530 mm (8'4")	2230 mm (7'3")
9 Minimum Front Swing Radius	3620 mm (11'10")	3620 mm (11'10")
Bucket Forces (ISO)	136 kN (30,574 lbf)	136 kN (30,574 lbf)
Stick Forces (ISO)	95 kN (21,357 lbf)	87 kN (19,558 lbf)
Bucket Type	GD	GD
Bucket Capacity	0.91 m ³ (1.19 yd ³)	0.91 m ³ (1.19 yd ³)
Bucket Tip Radius (Pin-On)	1298 mm (4'3")	1298 mm (4'3")
Bucket Tip Radius (QC)	1535 mm (5'5")	1535 mm (5'5")

Range values are with dual pneumatic tires (10.00-20).

Range values are calculated with a bucket (1200GD-CW30) 0.91 m³ (1.19 yd³) with TIP GP-GEN DUTY (K80) and CW-30 quick coupler with a tip radius of 1535 mm (5'5").

Force values are calculated with heavy lift on (no quick coupler) and a tip radius of 1298 mm (4'3").

M320 Wheeled Excavator Specifications

Lift Capacities – One-Piece Boom, 2.5 m Stick

Height and radius in meters, lift capacities in tons, work tool: none, bucket cylinder and bucket linkage installed, counterweight: 4000 kg, heavy lift function on.

		Load at maximum reach (sticknose/bucket pin)			Load over front			Load over rear			Load over side			Load point height			
	Undercarriage configuration	3.0 m			4.5 m			6.0 m			7.5 m						m
6.0 m	Free on Wheels							5.05	3.65	3.20				*3.45	3.00	2.65	6.66
	Fully stabilized							*5.55	*5.55	5.30				*3.45	*3.45	*3.45	
4.5 m	Free on Wheels							4.95	3.55	3.10				*3.35	2.50	2.15	7.43
	Fully stabilized							*6.00	*6.00	5.20				*3.35	*3.35	*3.35	
3.0 m	Free on Wheels				7.40	5.10	4.40	4.80	3.35	2.95	3.40	2.40	2.10	3.15	2.20	1.95	7.84
	Fully stabilized				*8.70	*8.70	7.80	*6.65	*6.65	5.00	*5.50	5.20	3.55	*3.45	*3.45	3.35	
1.5 m	Free on Wheels				7.00	4.75	4.05	4.60	3.20	2.75	3.30	2.30	2.00	3.05	2.10	1.85	7.93
	Fully stabilized				*10.00	*10.00	7.35	*7.30	7.20	4.80	*5.85	5.10	3.50	*3.65	*3.65	3.20	
0 m	Free on Wheels				6.75	4.55	3.85	4.45	3.05	2.65	3.25	2.25	1.95	3.15	2.15	1.85	7.72
	Fully stabilized				*10.35	*10.35	7.15	*7.55	7.05	4.70	*5.85	5.05	3.40	*4.10	*4.10	3.30	
-1.5 m	Free on Wheels	*9.40	8.45	6.95	6.70	4.50	3.80	4.40	3.00	2.60				3.45	2.40	2.05	7.19
	Fully stabilized	*9.40	*9.40	*9.40	*9.75	*9.75	7.10	*7.20	7.00	4.65				*5.00	*5.00	3.60	
-3.0 m	Free on Wheels	*11.00	8.65	7.10	6.80	4.55	3.90	4.45	3.05	2.65				4.25	2.90	2.55	6.24
	Fully stabilized	*11.00	*11.00	*11.00	*8.20	*8.20	7.15	*5.80	*5.80	4.70				*5.35	*5.35	4.45	

*Limited by hydraulic rather than tipping load.

Oscillating axle needs to be locked. Weight of all lifting accessories must be subtracted from the lifting capacities. All lift capacities calculated and rated per ISO 10567:2007. Rated loads do not exceed 87% of hydraulic lift capacity or 75% of tipping load. Heavy Lift Function ON. Lifting capacities are based on the machine standing on a firm uniform supporting surface. The load point is the center line of the bucket pivot mounting pin on the stick. Always refer to the appropriate Operation and Maintenance Manual for specific product information.

Lift Capacities – One-Piece Boom, 8'2" Stick

Height and radius in feet, lift capacities in lbs, work tool: none, bucket cylinder and bucket linkage installed, counterweight: 8,820 lb, heavy lift function on.

		Load at maximum reach (sticknose/bucket pin)			Load over front			Load over rear			Load over side			Load point height			
	Undercarriage configuration	10.0 ft			15.0 ft			20.0 ft			25.0 ft						m
20.0 ft	Free on Wheels							10,900	7,800	6,900				*7,700	6,800	6,000	21.65
	Fully stabilized							*11,600	*11,600	11,400				*7,700	*7,700	*7,700	
15.0 ft	Free on Wheels							*10,700	7,600	6,700				*7,400	5,500	4,800	24.31
	Fully stabilized							*13,100	*13,100	11,200				*7,400	*7,400	*7,400	
10.0 ft	Free on Wheels				16,000	11,000	9,600	10,300	7,300	6,300	7,300	5,100	4,500	7,000	4,900	4,300	25.69
	Fully stabilized				*18,700	*18,700	16,800	*14,500	*14,500	10,800	*10,600	*10,600	7,700	*7,600	*7,600	7,300	
5.0 ft	Free on Wheels				15,000	10,200	8,800	9,900	6,900	6,000	7,200	5,000	4,300	6,700	4,700	4,100	26.02
	Fully stabilized				*21,600	*21,600	15,900	*15,800	15,500	10,400	*12,700	11,000	7,500	*8,100	*8,100	7,100	
0 ft	Free on Wheels				14,600	9,800	8,300	9,600	6,600	5,700	7,000	4,900	4,200	6,900	4,800	4,100	25.33
	Fully stabilized				*22,400	*22,400	15,400	*16,300	15,200	10,100	*11,500	10,800	7,400	*9,100	*9,100	7,300	
-5.0 ft	Free on Wheels	*21,400	18,200	15,000	14,400	9,700	8,200	9,500	6,500	5,600				7,600	5,200	4,500	23.56
	Fully stabilized	*21,400	*21,400	*21,400	*21,100	*21,100	15,300	*15,500	15,000	10,000				*11,100	*11,100	8,000	
-10.0 ft	Free on Wheels	*23,800	18,500	15,300	14,600	9,800	8,400	9,700	6,600	5,700				9,400	6,500	5,600	20.34
	Fully stabilized	*23,800	*23,800	*23,800	*17,600	*17,600	15,400	*12,300	*12,300	10,100				*11,800	*11,800	9,900	

*Limited by hydraulic rather than tipping load.

Oscillating axle needs to be locked. Weight of all lifting accessories must be subtracted from the lifting capacities. All lift capacities calculated and rated per ISO 10567:2007. Rated loads do not exceed 87% of hydraulic lift capacity or 75% of tipping load. Heavy Lift Function ON. Lifting capacities are based on the machine standing on a firm uniform supporting surface. The load point is the center line of the bucket pivot mounting pin on the stick. Always refer to the appropriate Operation and Maintenance Manual for specific product information.

M320 Wheeled Excavator Specifications

Lift Capacities – One-Piece Boom, 2.8 m Stick

Height and radius in meters, lift capacities in tons, work tool: none, bucket cylinder and bucket linkage installed, counterweight: 4000 kg, heavy lift function on.

		Load at maximum reach (sticknose/bucket pin)			Load over front			Load over rear			Load over side			Load point height			
	Undercarriage configuration	3.0 m			4.5 m			6.0 m			7.5 m						m
6.0 m	Free on Wheels							5.15	3.70	3.25				*3.05	2.80	2.50	7.00
	Fully stabilized							*5.20	*5.20	*5.20				*3.05	*3.05	*3.05	
4.5 m	Free on Wheels							5.00	3.60	3.15	3.50	2.50	2.15	*2.95	2.35	2.05	7.73
	Fully stabilized							*5.75	*5.75	5.25	*4.05	*4.05	3.65	*2.95	*2.95	*2.95	
3.0 m	Free on Wheels				7.50	5.20	4.50	4.80	3.40	2.95	3.45	2.40	2.10	3.00	2.10	1.85	8.12
	Fully stabilized				*8.35	*8.35	7.90	*6.45	*6.45	5.05	*5.55	5.20	3.60	*3.00	*3.00	*3.00	
1.5 m	Free on Wheels				7.05	4.80	4.10	4.60	3.20	2.80	3.35	2.30	2.00	2.90	2.00	1.75	8.21
	Fully stabilized				*9.80	*9.80	7.45	*7.15	*7.15	4.85	*5.80	5.10	3.50	*3.20	*3.20	3.05	
0 m	Free on Wheels				6.80	4.55	3.90	4.45	3.05	2.65	3.25	2.25	1.95	3.00	2.05	1.80	8.01
	Fully stabilized				*10.35	*10.35	7.15	*7.50	7.05	4.70	*5.85	5.05	3.45	*3.60	*3.60	3.10	
-1.5 m	Free on Wheels	*9.00	8.40	6.90	6.70	4.50	3.80	4.40	3.00	2.60				3.25	2.25	1.95	7.50
	Fully stabilized	*9.00	*9.00	*9.00	*9.95	*9.95	7.10	*7.30	7.00	4.65				*4.25	*4.25	3.40	
-3.0 m	Free on Wheels	*11.85	8.55	7.05	6.75	4.50	3.85	4.45	3.05	2.60				3.90	2.70	2.35	6.60
	Fully stabilized	*11.85	*11.85	*11.85	*8.60	*8.60	7.15	*6.25	*6.25	4.65				*5.25	*5.25	4.10	
-4.5 m	Free on Wheels				*5.65	4.70	4.05							*4.60	4.00	3.45	5.09
	Fully stabilized				*5.65	*5.65	*5.65							*4.60	*4.60	*4.60	

*Limited by hydraulic rather than tipping load.

Oscillating axle needs to be locked. Weight of all lifting accessories must be subtracted from the lifting capacities. All lift capacities calculated and rated per ISO 10567:2007. Rated loads do not exceed 87% of hydraulic lift capacity or 75% of tipping load. Heavy Lift Function ON. Lifting capacities are based on the machine standing on a firm uniform supporting surface. The load point is the center line of the bucket pivot mounting pin on the stick. Always refer to the appropriate Operation and Maintenance Manual for specific product information.

Lift Capacities – One-Piece Boom, 9'2" Stick

Height and radius in feet, lift capacities in lbs, work tool: none, bucket cylinder and bucket linkage installed, counterweight: 8,820 lb, heavy lift function on.

		Load at maximum reach (sticknose/bucket pin)			Load over front			Load over rear			Load over side			Load point height			
	Undercarriage configuration	10.0 ft			15.0 ft			20.0 ft			25.0 ft						m
20.0 ft	Free on Wheels							11,000	7,900	7,000				*6,700	6,300	5,500	22.74
	Fully stabilized							*11,200	*11,200	*11,200				*6,700	*6,700	*6,700	
15.0 ft	Free on Wheels							10,800	7,700	6,800	7,500	5,300	4,700	*6,500	5,200	4,600	25.30
	Fully stabilized							*12,600	*12,600	11,300	*7,600	*7,600	*7,600	*6,500	*6,500	*6,500	
10.0 ft	Free on Wheels				16,100	11,200	9,700	10,400	7,300	6,400	7,400	5,200	4,500	*6,700	4,700	4,100	26.61
	Fully stabilized				*18,000	*18,000	17,000	*14,000	*14,000	10,900	*11,600	11,200	7,700	*6,700	*6,700	*6,700	
5.0 ft	Free on Wheels				15,200	10,300	8,900	10,000	6,900	6,000	7,200	5,000	4,400	6,400	4,500	3,900	26.94
	Fully stabilized				*21,200	*21,200	16,000	*15,500	*15,500	10,500	*12,600	11,000	7,500	*7,100	*7,100	6,700	
0 ft	Free on Wheels	*11,700	*11,700	*11,700	14,600	9,800	8,400	9,600	6,600	5,700	7,000	4,900	4,200	6,600	4,500	3,900	26.28
	Fully stabilized	*11,700	*11,700	*11,700	*22,400	*22,400	15,400	*16,300	15,200	10,100	*12,700	10,800	7,400	*7,900	*7,900	6,900	
-5.0 ft	Free on Wheels	*20,400	18,000	14,800	14,400	9,600	8,200	9,500	6,500	5,600				7,200	4,900	4,300	24.57
	Fully stabilized	*20,400	*20,400	*20,400	*21,500	*21,500	15,200	*15,800	15,000	10,000				*9,500	*9,500	7,500	
-10.0 ft	Free on Wheels	*25,700	18,400	15,100	14,500	9,700	8,300	9,600	6,600	5,700				8,700	6,000	5,200	21.52
	Fully stabilized	*25,700	*25,700	*25,700	*18,500	*18,500	15,300	*13,300	*13,300	10,100				*11,600	*11,600	9,100	
-15.0 ft	Free on Wheels				*11,700	10,200	8,700							*10,000	9,000	7,800	16.37
	Fully stabilized				*11,700	*11,700	*11,700							*10,000	*10,000	*10,000	

*Limited by hydraulic rather than tipping load.

Oscillating axle needs to be locked. Weight of all lifting accessories must be subtracted from the lifting capacities. All lift capacities calculated and rated per ISO 10567:2007. Rated loads do not exceed 87% of hydraulic lift capacity or 75% of tipping load. Heavy Lift Function ON. Lifting capacities are based on the machine standing on a firm uniform supporting surface. The load point is the center line of the bucket pivot mounting pin on the stick. Always refer to the appropriate Operation and Maintenance Manual for specific product information.

M320 Wheeled Excavator Specifications

Bucket Specifications and Compatibility – South America

Contact your Cat dealer for special bucket requirements.

	Width		Capacity		Weight		Fill	Free on Wheels	Fully stabilized	Free on Wheels	Fully stabilized	
	mm	in	m ³	yd ³	kg	lb						%
Pin-On (No Quick Coupler)								4000 mt (8,820 lb)		4000 mt (8,820 lb)		
								One-Piece Boom		One-Piece Boom		
								R2.5 (8'2")		R2.8 (9'2")		
GENERAL DUTY	600	24	0.39	0.50	458	1,010	100	●	●	●	●	
	1200	48	0.98	1.29	669	1,475	100	○	●	◇	●	
	1300	51	1.07	1.41	698	1,539	100	◇	●	◇	⊙	
	1400	55	1.18	1.54	730	1,609	100	◇	●	◇	⊙	
Maximum load with pin-on (payload + bucket)								kg	1850	3150	1750	2800
								lb	4,079	6,945	3,858	6,173
With Pin Grabber Coupler								4000 mt (8,820 lb)		4000 mt (8,820 lb)		
								One-Piece Boom		One-Piece Boom		
								R2.5 (8'2")		R2.8 (9'2")		
GENERAL DUTY	600	24	0.39	0.50	458	1,010	100	●	●	●	●	
	1200	48	0.98	1.29	669	1,475	100	X	●	X	⊙	
	1300	51	1.07	1.41	698	1,539	100	X	⊙	X	⊖	
	1400	55	1.18	1.54	730	1,609	100	X	⊖	X	○	
Maximum load with coupler (payload + bucket)								kg	1410	2710	1310	2360
								lb	3,109	5,975	2,888	5,203

Maximum Material Density:

- 2100 kg/m³ (3,500 lb/yd³)
- ⊙ 1800 kg/m³ (3,000 lb/yd³)
- ⊖ 1500 kg/m³ (2,500 lb/yd³)
- 1200 kg/m³ (2,000 lb/yd³)
- ◇ 900 kg/m³ (1,500 lb/yd³)
- X Not Recommended

The above loads are in compliance with hydraulic excavator standard EN474-5:2006+A3:2013, they do not exceed 87% of hydraulic lifting capacity or 75% of tipping capacity with front linkage fully extended at ground line with bucket curled. Capacity based on ISO 7451:2007.

Caterpillar recommends using appropriate work tools to maximize the value customers receive from our products. Use of work tools, including buckets, which are outside of Caterpillar's recommendations or specifications for weight, dimensions, flows, pressures, etc. may result in less-than-optimal performance, including but not limited to reductions in production, stability, reliability, and component durability. Improper use of a work tool resulting in sweeping, prying, twisting and/or catching of heavy loads will reduce the life of the boom and stick.

M320 Wheeled Excavator Specifications

Bucket Specifications and Compatibility – Africa Middle East, Eurasia

Contact your Cat dealer for special bucket requirements.

	Width		Capacity		Weight		Fill	Free on Wheels	Fully stabilized	Free on Wheels	Fully stabilized	
	mm	in	m ³	yd ³	kg	lb						%
								4000 mt (8,820 lb)		4000 mt (8,820 lb)		
								One-Piece Boom		One-Piece Boom		
								R2.5 (8'2")		R2.8 (9'2")		
Pin-On (No Quick Coupler)												
GENERAL DUTY	600	24	0.39	0.50	458	1,010	100	●	●	●	●	
	1200	48	0.98	1.29	669	1,475	100	○	●	◇	●	
	1300	51	1.07	1.41	698	1,539	100	◇	●	◇	⊙	
	1400	55	1.18	1.54	730	1,609	100	◇	●	◇	⊙	
Maximum load with pin-on (payload + bucket)								kg	1850	3150	1750	2800
								lb	4,079	6,945	3,858	6,173
								4000 mt (8,820 lb)		4000 mt (8,820 lb)		
								One-Piece Boom		One-Piece Boom		
								R2.5 (8'2")		R2.8 (9'2")		
With Pin Grabber Coupler												
GENERAL DUTY	600	24	0.39	0.50	458	1,010	100	●	●	●	●	
	1200	48	0.98	1.29	669	1,475	100	X	●	X	⊙	
	1300	51	1.07	1.41	698	1,539	100	X	⊙	X	⊖	
	1400	55	1.18	1.54	730	1,609	100	X	⊖	X	○	
Maximum load with coupler (payload + bucket)								kg	1410	2710	1310	2360
								lb	3,109	5,975	2,888	5,203
								4000 mt (8,820 lb)		4000 mt (8,820 lb)		
								One-Piece Boom		One-Piece Boom		
								R2.5 (8'2")		R2.8 (9'2")		
With CW30 Coupler												
GENERAL DUTY	1300	51	1.00	1.31	638	1,406	100	◇	●	◇	⊙	
	1400	55	1.09	1.43	668	1,473	100	◇	●	X	⊙	
Maximum load with coupler (payload + bucket)								kg	1630	2930	1530	2580
								lb	3,594	6,460	3,373	5,688

Maximum Material Density:

- 2100 kg/m³ (3,500 lb/yd³)
- ⊙ 1800 kg/m³ (3,000 lb/yd³)
- ⊖ 1500 kg/m³ (2,500 lb/yd³)
- 1200 kg/m³ (2,000 lb/yd³)
- ◇ 900 kg/m³ (1,500 lb/yd³)
- X Not Recommended

The above loads are in compliance with hydraulic excavator standard EN474-5:2006+A3:2013, they do not exceed 87% of hydraulic lifting capacity or 75% of tipping capacity with front linkage fully extended at ground line with bucket curled. Capacity based on ISO 7451:2007.

Caterpillar recommends using appropriate work tools to maximize the value customers receive from our products. Use of work tools, including buckets, which are outside of Caterpillar's recommendations or specifications for weight, dimensions, flows, pressures, etc. may result in less-than-optimal performance, including but not limited to reductions in production, stability, reliability, and component durability. Improper use of a work tool resulting in sweeping, prying, twisting and/or catching of heavy loads will reduce the life of the boom and stick.

M320 Wheeled Excavator Specifications

Bucket Specifications and Compatibility – SE Asia

Contact your Cat dealer for special bucket requirements.

	Width		Capacity		Weight		Fill	Free on Wheels	Fully stabilized	Free on Wheels	Fully stabilized	
	mm	in	m ³	yd ³	kg	lb						%
Pin-On (No Quick Coupler)								4000 mt (8,820 lb)		4000 mt (8,820 lb)		
								One-Piece Boom		One-Piece Boom		
								R2.5 (8'2")		R2.8 (9'2")		
GENERAL DUTY	1200	48	0.98	1.29	669	1,475	100	○	●	◇	●	
Maximum load with pin-on (payload + bucket)								kg	1850	3150	1750	2800
								lb	4,079	6,945	3,858	6,173
With Pin Grabber Coupler								4000 mt (8,820 lb)		4000 mt (8,820 lb)		
								One-Piece Boom		One-Piece Boom		
								R2.5 (8'2")		R2.8 (9'2")		
GENERAL DUTY	1200	48	0.98	1.29	669	1,475	100	X	●	X	⊙	
Maximum load with coupler (payload + bucket)								kg	1410	2710	1310	2360
								lb	3,109	5,975	2,888	5,203

Maximum Material Density:

- 2100 kg/m³ (3,500 lb/yd³)
- ⊙ 1800 kg/m³ (3,000 lb/yd³)
- ⊖ 1500 kg/m³ (2,500 lb/yd³)
- 1200 kg/m³ (2,000 lb/yd³)
- ◇ 900 kg/m³ (1,500 lb/yd³)
- X Not Recommended

The above loads are in compliance with hydraulic excavator standard EN474-5:2006+A3:2013, they do not exceed 87% of hydraulic lifting capacity or 75% of tipping capacity with front linkage fully extended at ground line with bucket curled. Capacity based on ISO 7451:2007.

Caterpillar recommends using appropriate work tools to maximize the value customers receive from our products. Use of work tools, including buckets, which are outside of Caterpillar's recommendations or specifications for weight, dimensions, flows, pressures, etc. may result in less-than-optimal performance, including but not limited to reductions in production, stability, reliability, and component durability. Improper use of a work tool resulting in sweeping, prying, twisting and/or catching of heavy loads will reduce the life of the boom and stick.

M320 Wheeled Excavator Specifications

Attachments Offering Guide – South America

Not all Attachments are available in all regions. Consult your Cat dealer for configurations available in your region.

Match
 No Match
 1800 kg/m³ (3,000 lb/yd³)
 1200 kg/m³ (2,000 lb/yd³)

PIN-ON ATTACHMENTS

Undercarriage		Outrigger; Blade	
Counterweight		4000 mt (8,820 lb)	
Boom Type		One-Piece	
Stick Length		2.50 m (8'2")	2.80 m (9'2")
Hydraulic Hammers	H115 S	✓	✓
	H120 GC	✓	✓
	H120 GC Side Mount	✓	✓
	H120 GC S	✓	✓
	H120 S	✓	✓
	H130 S	✓	✓
Multi-Processors	MP318 Concrete Cutter Jaw	✓	
	MP318 Demolition Jaw	✓	
	MP318 Shear Jaw	✓	
	MP318 Universal Jaw	✓	✓
Demolition and Sorting Grapples	G318	✓	
Pulverizers	P218 Secondary Pulverizer	✓	
	P318 Primary Pulverizer	✓	✓
Compactors (Vibratory Plate)	CVP75	✓	✓
Orange Peel Grapples	GSH420-500	●	●
	GSH420-600	●	●
	GSH420-750	●	●
	GSH425-750	●	○
	GSH425-950	○	○
	GSH425-1150	○	
	GSH520-500	●	●
	GSH520-600	●	●
	GSH520-750	●	●
	GSH525-750	○	
GSH520-950	○		

CAT PIN GRABBER COUPLER ATTACHMENTS

Undercarriage		Outrigger; Blade	
Counterweight		4000 mt (8,820 lb)	
Boom Type		One-Piece	
Stick Length		2.50 m (8'2")	2.80 m (9'2")
Hydraulic Hammers	H115 S	✓	✓
	H120 GC	✓	✓
	H120 GC Side Mount	✓	✓
	H120 GC S	✓	✓
	H120 S	✓	✓
	H130 S	✓	
Multi-Processors	MP318 Shear Jaw	✓	
Compactors (Vibratory Plate)	CVP75	✓	✓

M320 Wheeled Excavator Specifications

Attachments Offering Guide – Africa Middle East, Eurasia

Not all Attachments are available in all regions. Consult your Cat dealer for configurations available in your region.

Match

No Match

PIN-ON ATTACHMENTS

Undercarriage		Outrigger; Blade	
Counterweight		4000 mt (8,820 lb)	
Boom Type		One-Piece	
Stick Length		2.50 m (8'2")	2.80 m (9'2")
Hydraulic Hammers	H115 S	✓	✓
	H120 GC	✓	✓
	H120 GC Side Mount	✓	✓
	H120 GC S	✓	✓
	H120 S	✓	✓
	H130 S	✓	✓
Multi-Processors	MP318 Concrete Cutter Jaw	✓	
	MP318 Demolition Jaw	✓	
	MP318 Shear Jaw	✓	
	MP318 Universal Jaw	✓	✓
Demolition and Sorting Grapples	G317 GC	✓	✓
	G318	✓	
	G318 WH 800	✓	
	G318 WH 1100	✓	✓
Pulverizers	P218 Secondary Pulverizer	✓	
	P318 Primary Pulverizer	✓	✓
Compactors (Vibratory Plate)	CVP75	✓	✓

(continued on next page)

M320 Wheeled Excavator Specifications

Attachments Offering Guide – Africa Middle East, Eurasia (continued)

Not all Attachments are available in all regions. Consult your Cat dealer for configurations available in your region.

1800 kg/m³ (3,000 lb/yd³)
 1200 kg/m³ (2,000 lb/yd³)
 600 kg/m³ (1,000 lb/yd³)
 No Match

PIN-ON ATTACHMENTS (continued)

Undercarriage		Outrigger; Blade	
Counterweight		4000 mt (8,820 lb)	
Boom Type		One-Piece	
Stick Length		2.50 m (8'2")	2.80 m (9'2")
Orange Peel Grapples	GSH420-500	●	●
	GSH420-600	●	●
	GSH420-750	●	●
	GSH425-750	●	○
	GSH425-950	○	○
	GSH425-1150	○	
	GSH520-500	●	●
	GSH520-600	●	●
	GSH520-750	●	●
	GSH525-750	○	
	GSH520-950	○	
	GSV420-400	●	●
	GSV420-500	●	●
	GSV420-600	●	●
	GSV420-750	●	●
	GSV420-1250	◇	◇
	GSV425-600	●	●
	GSV425-750	●	○
	GSV425-950	○	○
	GSV425-1150	○	
	GSV425-1550	◇	◇
	GSV520-400	●	●
	GSV520-500	●	●
	GSV520-600	●	●
	GSV520-750	●	●
	GSV520-1250	◇	◇
	GSV520 GC- 400	●	●
	GSV520 GC-500	●	●
	GSV520 GC-600	●	●
	GSV520 GC-750	●	●
	GSV520 GC-1250	◇	◇
	GSV525-600	●	○
	GSV525-750	●	○
GSV525-950	○		
GSV525-1550	◇		
Clamshell Grapples	CTV15-1000	●	○
	CTV15-1200	○	

(continued on next page)

M320 Wheeled Excavator Specifications

Attachments Offering Guide – Africa Middle East, Eurasia (continued)

Not all Attachments are available in all regions. Consult your Cat dealer for configurations available in your region.

Match No Match

CAT PIN GRABBER COUPLER ATTACHMENTS

Undercarriage		Outrigger; Blade	
Counterweight		4000 mt (8,820 lb)	
Boom Type		One-Piece	
Stick Length		2.50 m (8'2")	2.80 m (9'2")
Hydraulic Hammers	H115 S	✓	✓
	H120 GC	✓	✓
	H120 GC Side Mount	✓	✓
	H120 GC S	✓	✓
	H120 S	✓	✓
	H130 S	✓	
Multi-Processors	MP318 Shear Jaw	✓	
Demolition and Sorting Grapples	G317 GC	✓	
	G318 WH 800	✓	
Compactors (Vibratory Plate)	CVP75	✓	✓

CW-30s DEDICATED COUPLER ATTACHMENTS

Undercarriage		Outrigger; Blade	
Counterweight		4000 mt (8,820 lb)	
Boom Type		One-Piece	
Stick Length		2.50 m (8'2")	2.80 m (9'2")
Hydraulic Hammers	H115 S	✓	✓
	H120 GC	✓	
	H120 GC S	✓	✓
	H120 S	✓	✓
	H130 S	✓	
	Multi-Processors	MP318 Universal Jaw	✓
Demolition and Sorting Grapples	G317 GC	✓	✓
	G318	✓	
	G318 WH 800	✓	✓
	G318 WH 1100	✓	
Pulverizers	P318 Primary Pulverizer	✓	
Compactors (Vibratory Plate)	CVP75	✓	✓

(continued on next page)

M320 Wheeled Excavator Specifications

Attachments Offering Guide – Africa Middle East, Eurasia (continued)

Not all Attachments are available in all regions. Consult your Cat dealer for configurations available in your region.

Match No Match

CW-30 DEDICATED COUPLER ATTACHMENTS

Undercarriage		Outrigger; Blade	
Counterweight		4000 mt (8,820 lb)	
Boom Type		One-Piece	
Stick Length		2.50 m (8'2")	2.80 m (9'2")
Hydraulic Hammers	H115 S	✓	✓
	H120 GC	✓	
	H120 GC S	✓	✓
	H120 S	✓	✓
	H130 S	✓	
Multi-Processors	MP318 Universal Jaw	✓	
Demolition and Sorting Grapples	G317 GC	✓	✓
	G317 GC Fixed CAN	✓	✓
	G318	✓	
	G318 Fixed CAN	✓	
	G318 WH 800	✓	✓
	G318 WH 1100	✓	
Pulverizers	P318 Primary Pulverizer	✓	
Compactors (Vibratory Plate)	CVP75	✓	✓

M320 Wheeled Excavator Specifications

Attachments Offering Guide – SE Asia (India, Indonesia, Singapore, and Thailand)

Not all Attachments are available in all regions. Consult your Cat dealer for configurations available in your region.

Match

PIN-ON ATTACHMENTS

Undercarriage		Outrigger; Blade	
Counterweight		4000 mt (8,820 lb)	
Boom Type		One-Piece	
Stick Length		2.50 m (8'2")	2.80 m (9'2")
Hydraulic Hammers	H115 S	✓	✓
	H120 GC	✓	✓
	H120 GC Side Mount	✓	✓
	H120 GC S	✓	✓
	H120 S	✓	✓
	H130 S	✓	✓
Compactors (Vibratory Plate)	CVP75	✓	✓

M320 Standard and Optional Equipment

Standard and Optional Equipment

Standard and optional equipment may vary. Consult your Cat dealer for details.

	Standard	Optional		Standard	Optional
BOOM, STICKS AND LINKAGES			HYDRAULIC SYSTEM		
One-Piece Boom	✓		Heavy lift mode	✓	
2.5 m (8'2") stick		✓	Separate dedicated swing pump	✓	
2.8 m (9'2") stick		✓	Stick regeneration circuit	✓	
Bucket linkage with diverter valve		✓	Variable displacement, load sensing hydraulic system	✓	
ELECTRICAL SYSTEM			Automatic swing brake	✓	
Alternator, 75 A	✓		Capability to add auxiliary hydraulic circuits	✓	
Boom working light	✓		Cat XT-6 ES hoses	✓	
Cab mounted working lights, front and rear	✓		Adjustable hydraulic sensitivity	✓	
Roading and indicator lights, front and rear	✓		Oil cooler	✓	
Main shut-off switch	✓		Anti-drift valve for bucket cylinder	✓	
Maintenance free batteries	✓		Hydraulic mineral oil, Cat HYDO™ advanced 10 oil	✓	
Electrical refueling pump		✓	Load sensing hydraulic system	✓	
ENGINE			Overload warning device*		✓
Cat C7.1 Single Turbo diesel engine – meets U.S. EPA Tier 4 Final and EU Stage emission standards.	✓		Boom and stick lowering control devices*		✓
Power mode selector	✓				
Air filter/fuel filter	✓				
Automatic engine speed control	✓				
Automatic starting aid	✓				
Work up to 3000 m (9,842 ft) above sea level without engine power de-rating	✓				
Fuel/water separator with level indicator	✓				
Muffler	✓				

(continued on next page)

*Standard for Africa, Middle East and Eurasia

M320 Standard and Optional Equipment

Standard and Optional Equipment *(continued)*

Standard and optional equipment may vary. Consult your Cat dealer for details.

	Standard	Optional		Standard	Optional
SAFETY AND SECURITY			UNDERCARRIAGE AND STRUCTURES		
Camera mounted on counterweight	✓		Creeper speed/ four wheel drive	✓	
Mirrors, frame and cab	✓		Heavy-duty axles, advanced disc brake system and travel motor, adjustable braking force	✓	
Travel alarm	✓		Parking brake	✓	
Signal/warning horn	✓		Oscillating front axle, lockable, with remote greasing point	✓	
Rotating beacon on cab and chassis		✓	Full hydraulic steering with emergency capability	✓	
SERVICE AND MAINTENANCE			Steps with tool box in undercarriage (left and right)	✓	
Scheduled Oil Sampling (S·O·S SM) ports	✓		Two-piece drive shaft	✓	
Caterpillar Datalink and Electronic Technician capability	✓		Two speed hydrostatic transmission	✓	
Door locks and cab locks with Caterpillar one-key security system	✓		10.00-20 dual tires		✓
TECHNOLOGY			Rear blade (parallel)/front outrigger undercarriage		✓
Cat Product Link™	✓		Rear outrigger/front blade (parallel) undercarriage		✓
			Fenders**		✓
			Counterweight 4000 kg (8,818 lb)	✓	

**Not available in all markets. Please contact your Cat dealer for details.

Cab Options

Reinforced cab structure compliant with 2006/42/EC (tested according to ISO 12117-2:2008)*	●
Adjustable armrests	●
Ash tray with 24V cigarette lighter	●
Beverage cup/can holder/bottle holder	●
Bolt-on operator protective guard (OPG) capability	●
Bottom mounted, intermittent, parallel wiper and washer	●
Instrument panel and gauges with full color graphical display	●
Interior lighting	●
Joysticks, pilot operated	●
Left side console, tiltable, with lock-out for all controls	●
Mounting provisions for radio and speakers	●
Air conditioner heater & defroster	●
Power supply, 12V-7A	●
Rear window, emergency exit	●
Seat belt	●
Skylight	●
Steering column, tiltable	●
Storage compartment suitable for a lunch box	●
Sunshade for windshield and skylight	●
Travel speed lock	●
Front and top operator protective guards (OPG)	○
CD/MP3 Radio (12V) at rear location including speakers and 12V converter	○
Adjustable seat	○
Windshield (70/30 split, openable)	○
High pressure hammer pedal	○

● Standard

○ Optional

* Not available in all markets. Available only for Africa, Middle East and Eurasia. Please contact your Cat dealer for details.



For more complete information on Cat products, dealer services, and industry solutions, visit us on the web at www.cat.com

© 2024 Caterpillar
All rights reserved

Materials and specifications are subject to change without notice. Featured machines in photos may include additional equipment. See your Cat dealer for available options.

CAT, CATERPILLAR, LET'S DO THE WORK, their respective logos, "Caterpillar Corporate Yellow," the "Power Edge" and Cat "Modern Hex" trade dress as well as corporate and product identity used herein, are trademarks of Caterpillar and may not be used without permission.

AEXQ3713 (01-2024)
Build Number: 04B
(S Am, AME,
Eurasia, SE Asia)

