

BALLASTLESS FASTENING SYSTEMS FOR TRANSIT AND FREIGHT ENVIRONMENTS



Progress Rail
A Caterpillar Company

OUR COMPREHENSIVE LINE OF RAIL FASTENERS

With state-of-the-art manufacturing facilities located strategically around the globe, we produce the highest quality and widest range of rail fastening systems in both standard and high resilient direct fixation fasteners for tangent, tight curves and special trackwork. In our more than 40-year history we have created one of the most comprehensive rail fastening portfolios in the industry.

In October 2015, Progress Rail acquired Amsted Rail's Rail Product Solutions (RPS) division to capture best-in-class, high-performance rail fastener solutions for freight and transit rail customers. RPS was a collection of three companies (Unit Rail, Airboss and Advanced Track Products). This acquisition expanded the Progress Rail product offerings to include fundamental components for

rail infrastructure, playing a crucial role in enhancing reliability, improving ride quality and minimizing track downtime. We support our customers by delivering innovative options, such as the Loadmaster 40, and ADFE-55.

Progress Rail's Fastener Division is here to provide products that address the needs of the industry. Whether you require a product straight from our portfolio or have a special need, we're here to work with you to find the best solutions.

SW SERIES



Typical vertical stiffness is ~135 klbs/in

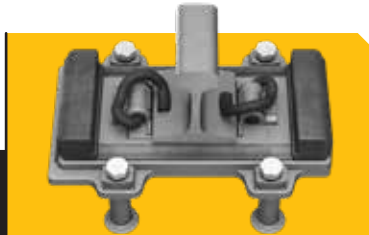
Available for e-Style and PR-style, and SKL clips

Allows for +/- 1/2" gauge adjustment

Designs for 10 - 30 ton axles

Installed on all major US transit agencies

LOADMASTER 40



Dual vertical stiffness 110 & 350 klbs/in

Available for e-Style and PR-style clips

Allows for +/- 1/2" gauge adjustment

Designed for more than 40 ton loads

Installed on many commuter and Class I railroads

EGG TYPE DF



Vertical stiffness is ~55 klbs/in

Available for e-Style and PR-style clips

Allows for +/- 1/2" gauge adjustment

Designed for up to 18 ton crush loads

Installed in many transit agencies

ADFF SERIES



Vertical stiffness is ~55 klbs/in and lower

Available for e-Style and PR-style, and SKL clips

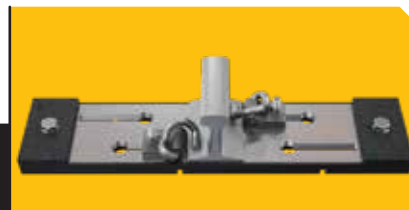
Allows for +/- 1/2" gauge adjustment

Designed for up to 18 ton crush loads

Installed in multiple transit agencies

Innovation from legacy Egg Type DF

H SERIES



Vertical stiffness is ~130 klbs/in

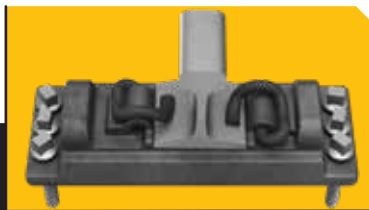
Available for e-Style and PR-style clips

Fixed and adjustable gauge available

Designs for 18-ton axles

Installed on all major US transit agencies

LOADMASTER TT



Dual vertical stiffness 110k & 350 klbs/in

Available for e-Style and PR-style clips

Allows for no gauge adjustment

Designed for more than 40-ton loads

Installed on many commuter and Class I railroads

TURNOUT EGG



Vertical stiffness is ~55 klbs/in

Available for e-Style and PR-style clips

Allows for no gauge adjustment

Designed for up to 18 ton crush loads

Installed in many transit agencies

RF PLATE



Vertical stiffness is ~70 klbs/in

Available for e-Style and PR-style clips

Allows for no gauge adjustment

Designed for up to 18 ton crush loads

Hundreds of thousands installed in the Northeast

For more information please contact:



JOSE MEDIAVILLA
Director of Engineering
913-313-7979
jmediavilla@progressrail.com



SCOTT OSLER
Director of Technical Services - Passenger Rail
843-642-1142
sosler@progressrail.com

Progress Rail
A Caterpillar Company

+1 800-476-8769
ProgressRail.com

