

CAT® C9.3B

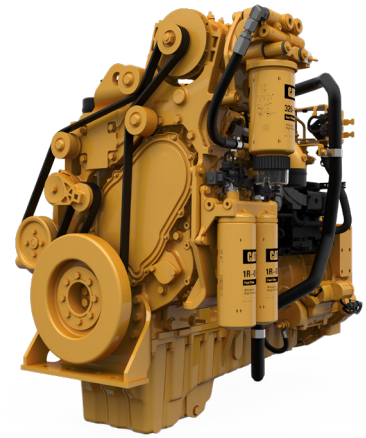
FUEL OPTIMIZED

280-330 KW (375-443 HP)



INDUSTRIAL ENGINE

The Cat® C9.3B industrial diesel engine is offered in ratings ranging from 280-330 kW (375-443 hp). These ratings have been fuel optimized for use in countries without any regulatory requirements for emission standards.



FEATURES AND BENEFITS

High Power Density

With power density as high as 48 hp/L (35 kW/L), you can look to downsize the displacement and weight of the engine that's currently powering your application.

Fuel Efficient and Low-Cost Maintenance

Fluid consumption optimized to match operating cycles of a wide range of equipment and applications while maintaining low operating costs. Worldwide service delivers ease of maintenance and simplifies the servicing routine.

Enhanced Electronics

The C9.3B is equipped for the future with the latest technology from a single on-engine ECM. 2-wire ethernet connection allows for simpler, faster installation, and for remote service and software flash.

SPECIFICATION

Cylinders	6 vertical in-line		
Displacement, litres (in ³)	9.3 (567.5)		
Aspiration	Turbocharged aftercooled		
Bore and stroke, mm (in)	115 x 149 (4.5 x 5.9)		
Maximum power, kW (hp)	280 (375)	300 (402)	330 (443)
Rated speed, rpm	1500-2100	1500-2000	1500-2000
Maximum torque, Nm (lb ft) @ rpm	1781 (1314) @ 1500	1911 (1409) @ 1500	2102 (1550) @ 1500
Combustion system	Direct injection (common rail)		
Weight, kg (lb)	865 (1907)		
Rotation (viewed from flywheel)	Anti-clockwise		

For additional information on all your power requirements, visit www.cat-industrial.com

All information in this document is substantially correct at time of printing and may be altered subsequently.
Photographs are for illustrative purposes only and may not reflect final specification.
Final weight and dimensions will depend on completed specification.
Information subject to selected configuration, and subject to change without notice.
Engine power measured per ISO 14396:2002

AEXJ0160-01 (12-23)

© 2023 Caterpillar. All Rights Reserved. CAT, CATERPILLAR, LET'S DO THE WORK, their respective logos, "Caterpillar Corporate Yellow", the "Power Edge" and Cat "Modern Hex" trade dress as well as corporate and product identity used herein, are trademarks of Caterpillar and may not be used without permission.

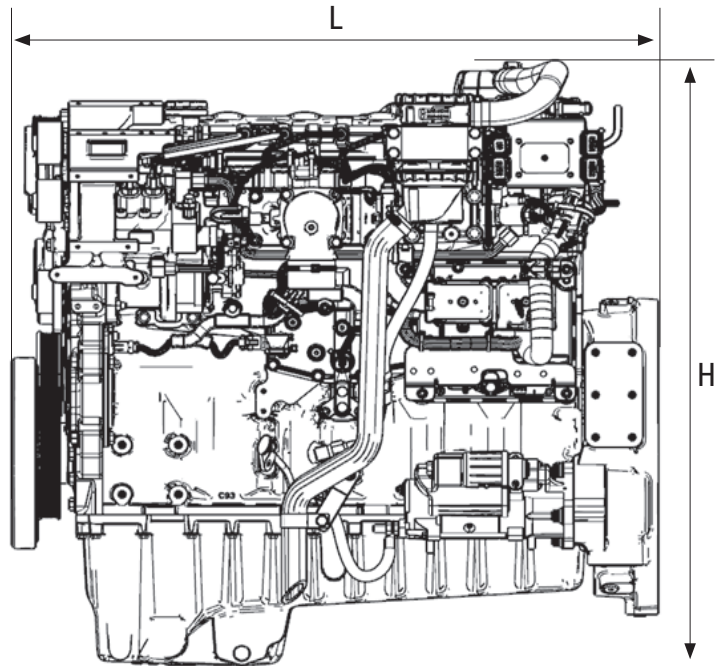
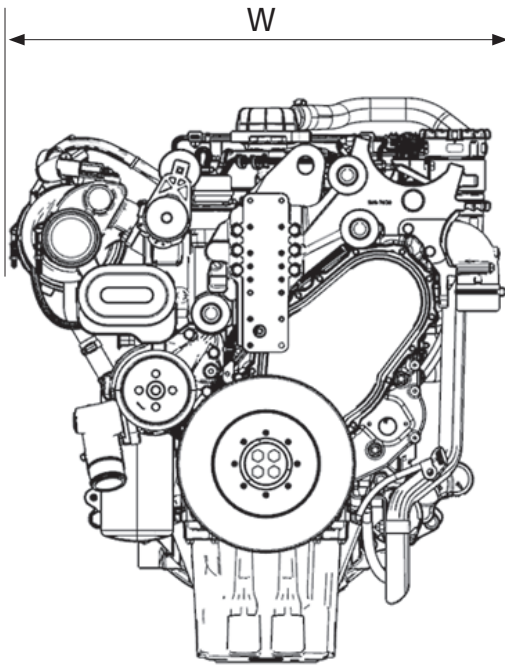
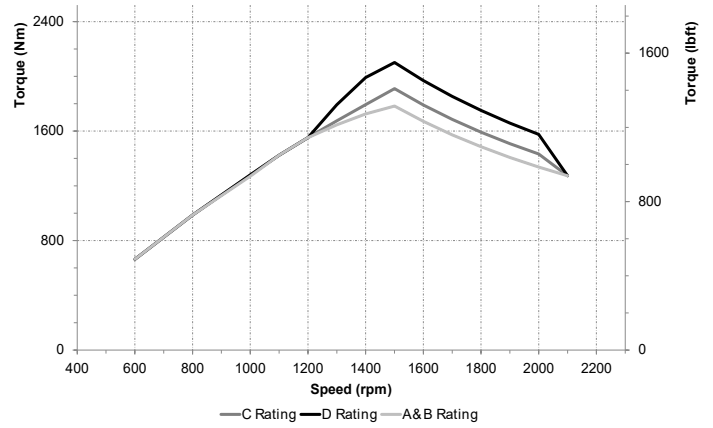
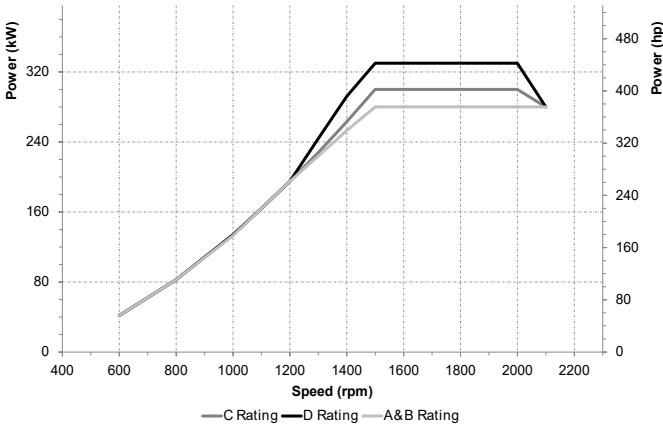
CAT® C9.3B

FUEL OPTIMIZED

280-330 KW (375-443 HP)



INDUSTRIAL ENGINE



DIMENSIONS AND WEIGHT (BASE ENGINE)

Length, mm (in)	1125 (44)
Width, mm (in)	791 (31)
Height, mm (in)	1068 (42)
Weight, kg (lb)	865 (1907)

For additional information on all your power requirements, visit www.cat-industrial.com

All information in this document is substantially correct at time of printing and may be altered subsequently. Photographs are for illustrative purposes only and may not reflect final specification. Final weight and dimensions will depend on completed specification. Information subject to selected configuration, and subject to change without notice. Engine power measured per ISO 14396:2002

AEXJ0160-01 (12-23)

© 2023 Caterpillar. All Rights Reserved. CAT, CATERPILLAR, LET'S DO THE WORK, their respective logos, "Caterpillar Corporate Yellow", the "Power Edge" and Cat "Modern Hex" trade dress as well as corporate and product identity used herein, are trademarks of Caterpillar and may not be used without permission.