



# M318

## Wheeled Excavator

# Technical Specifications

Configurations and features may vary by region. Please consult your Cat® dealer for availability in your area.

## Table of Contents

<b>Specifications</b> .....	<b>2</b>
Engine .....	2
Transmission .....	2
Service Refill Capacities .....	2
Swing Mechanism .....	2
Undercarriage .....	2
Operating Weights .....	2
Major Component Weights .....	3
Hydraulic System .....	3
Tires .....	3
Dozer Blade .....	4
Emissions and Safety .....	4
Standards .....	4
Sound Performance .....	4
Air Conditioning System .....	4
Dimensions .....	5
Undercarriage Dimensions .....	7
Working Ranges .....	8
Lift Capacities:	
Variable Adjustable Boom .....	10
One-Piece Boom .....	12
Bucket Specifications and Compatibility:	
North America .....	14
Africa-Middle East .....	16
Attachments Offering Guide:	
North America .....	18
Africa-Middle East .....	24
<b>Dealer Installed Kits and Attachments</b> .....	<b>32</b>
<b>Cab Options</b> .....	<b>33</b>
<b>Standard and Optional Equipment</b> .....	<b>34</b>

# M318 Wheeled Excavator Specifications

## Engine

Engine Model	Cat® C4.4 Unity	
Maximum Gross Power		
ISO 14396	108 kW	145 hp
ISO 14396 (metric)	147 hp	
Maximum Net Power		
ISO 9249	102.9 kW	138 hp
ISO 9249 (metric)	140 hp	
Bore	105 mm	4.1 in
Stroke	127 mm	5 in
Displacement	4.4 L	268.5 in <sup>3</sup>
Biodiesel Capability	Up to B20 <sup>(1)</sup>	
Number of Cylinders	4	

- U.S. EPA Tier 3 and EU Stage IIIA equivalent emissions.
- Net power advertised is the power available at the flywheel when engine is equipped with fan, air cleaner, alternator, and cooling fan running at intermediate speed.
- Advertised power is tested per the specified standard in effect at the time of manufacture.
- Recommended for use up to 3000 m (9,843 ft) altitude with engine power derate above 3000 m (9,843 ft).
- Rated speed at 2,000 rpm.

<sup>(1)</sup>Cat engines are compatible with diesel fuel blended with the following lower-carbon intensity fuels\*\* up to:

- ✓ 100% biodiesel FAME (fatty acid methyl ester)\*
- ✓ 100% renewable diesel, HVO (hydrotreated vegetable oil) and GTL (gas-to-liquid) fuels

Refer to guidelines for successful application. Please consult your Cat dealer or “Caterpillar Machine Fluids Recommendations” (SEBU6250) for details.

\*For use of blends higher than 20% biodiesel, consult your Cat dealer.

\*\*Tailpipe greenhouse gas emissions from lower-carbon intensity fuels are essentially the same as traditional fuels.

## Transmission

Forward/Reverse		
1st Gear	10 km/h	6.2 mph
2nd Gear	35 km/h	21.7 mph
Creeper Speed		
1st Gear	5.5 km/h	3.4 mph
2nd Gear	15 km/h	9.3 mph
Drawbar Pull	104 kN	23,380 lbf
Maximum Gradeability at (19 000 kg/41,890 lb)	60%	

## Service Refill Capacities

Fuel Tank (total capacity)	350 L	92.5 gal
Cooling System	23 L	6.1 gal
Engine Oil	13 L	3.4 gal
Hydraulic Tank (mid oil gauge)	122 L	32.2 gal
Hydraulic System (including tank)	260 L	68.7 gal
Rear Axle Housing (differential)	14 L	4 gal
Front Steering Axle (differential)	10.5 L	2.8 gal
Final Drive (each)	2.5 L	0.7 gal
Powershift Transmission	2.5 L	0.7 gal

## Swing Mechanism

Maximum Swing Speed	9.4 rpm	
Maximum Swing Torque	44 kN·m	32,560 lbf-ft

## Undercarriage

Ground Clearance	360 mm	14.2 in
Maximum Steering Angle	35°	
Oscillation Axle Angle	± 8.5°	
Minimum Turning Radius		
Outside of Tire	6600 mm	21'8"
Outside of Tire (plastic fender)	7900 mm	25'11"
End of VA Boom	7100 mm	23'3"
End of One-Piece Boom	8400 mm	27'7"

## Operating Weights\*

Minimum	18 800 kg	41,450 lb
Maximum	19 730 kg	43,500 lb

Typical Configurations:

Variable Adjustable Boom**		
Blade and Outriggers	19 200 kg	42,330 lb
Front and Rear Outriggers	19 400 kg	42,770 lb
One-Piece Boom**		
Blade and Outriggers	18 800 kg	41,450 lb
Front and Rear Outriggers	19 000 kg	41,890 lb

\*Operating weight includes full fuel tank, operator, bucket 610 kg (1,340 lb) and dual pneumatic tires. Weight varies depending on configuration.

\*\*Typical configurations include medium stick and 4200 kg (9,260 lb) counterweight.

# M318 Wheeled Excavator Specifications

## Major Component Weights

Boom (including VA and stick cylinder, pins and standard hydraulic lines):

Variable Adjustable Boom 5205 mm (17'1")	2200 kg	4,850 lb
--	---------	----------

One-Piece Boom 5100 mm (16'9")	1810 kg	3,990 lb
--------------------------------	---------	----------

Sticks (including cylinder, bucket linkage, pins and standard hydraulic lines):

Stick 2500 mm (8'2")	810 kg	1,790 lb
----------------------	--------	----------

Stick 2900 mm (9'6")	860 kg	1,900 lb
----------------------	--------	----------

Counterweight	4200 kg	9,260 lb
---------------	---------	----------

Undercarriage (including axles, standard tires and steps):

Rear Blade/Front Outrigger	6000 kg	13,230 lb
----------------------------	---------	-----------

Front Blade/Rear Outrigger	5965 kg	13,150 lb
----------------------------	---------	-----------

Rear Outrigger/Front Outrigger	6200 kg	13,670 lb
--------------------------------	---------	-----------

Buckets (without linkage):

CW Bucket GD 1200 mm (47"), 0.91 m <sup>3</sup> (1.19 yd <sup>3</sup> )	610 kg	1,340 lb
---	--------	----------

Pin-On Bucket GD 1200 mm (47"), 0.91 m <sup>3</sup> (1.19 yd <sup>3</sup> )	650 kg	1,430 lb
---	--------	----------

Quick Couplers:

CW30	220 kg	490 lb
------	--------	--------

Pin Grabber	300 kg	660 lb
-------------	--------	--------

## Hydraulic System

Maximum Pressure – Implement Circuit

Normal	35 000 kPa	5,076 psi
--------	------------	-----------

Heavy Lift	37 000 kPa	5,366 psi
------------	------------	-----------

Travel Circuit	35 000 kPa	5,076 psi
----------------	------------	-----------

Maximum Pressure – Auxiliary Circuit

High Pressure	35 000 kPa	5,076 psi
---------------	------------	-----------

Medium Pressure	17 000 kPa	2,466 psi
-----------------	------------	-----------

Swing Mechanism	35 000 kPa	5,076 psi
-----------------	------------	-----------

Maximum Flow

Implements	254 L/min	67 gal/min
------------	-----------	------------

Travel Circuit	235 L/min	62 gal/min
----------------	-----------	------------

Auxiliary Circuit

High Pressure	250 L/min	66 gal/min
---------------	-----------	------------

Medium Pressure	55 L/min	14.5 gal/min
-----------------	----------	--------------

Swing Mechanism	98 L/min	25.9 gal/min
-----------------	----------	--------------

Cylinders

Boom Cylinder (VA) – Bore	120 mm	0'5"
---------------------------	--------	------

Boom Cylinder (VA) – Stroke	916 mm	3'0"
-----------------------------	--------	------

VA cylinder – Bore	140 mm	0'6"
--------------------	--------	------

VA cylinder – Stroke	743 mm	2'5"
----------------------	--------	------

Boom Cylinder (1 PC) – Bore	120 mm	0'5"
-----------------------------	--------	------

Boom Cylinder (1 PC) – Stroke	893 mm	2'11"
-------------------------------	--------	-------

Stick Cylinder – Bore	120 mm	0'5"
-----------------------	--------	------

Stick Cylinder – Stroke	1147 mm	3'9"
-------------------------	---------	------

Bucket Cylinder – Bore	100 mm	0'4"
------------------------	--------	------

Bucket Cylinder – Stroke	1055 mm	3'6"
--------------------------	---------	------

## Tires

Optional	10.00 – 20 (dual pneumatic)
	11.00 – 20 (dual pneumatic)

# M318 Wheeled Excavator Specifications

## Dozer Blade

Blade Type	Parallel	
Width	2540 mm	8'4"
Blade Roll-Over Height	570 mm	1'10"
Blade Total Height	610 mm	2'0"
Maximum Lowering Depth From Ground	130 mm	0'5"
Maximum Raising Height Above Ground	495 mm	1'7"

## Emissions and Safety

Engine Emissions	Tier 3 and Stage IIIA equivalent	
Fluids	Meets EN 14214 or ASTM D6751 with EN590 or ASTM D975 Standard Mineral diesel fuels	
Biodiesel up to B20		
Meets EN 14214 or ASTM D6751 with EN590 or ASTM D975 Standard Mineral diesel fuels		
Vibration Levels		
Maximum Hand/Arm (ISO 5349-2001)	<2.5 m/s <sup>2</sup>	<8.2
Maximum Whole Body (ISO/TR 25398:2006)	<0.5 m/s <sup>2</sup>	<1.6
Seat Transmissibility Factor (ISO 7096:2020-spectral class EM6)	<0.7	

## Standards

Brakes	ISO 3450:2011
Cab (Rollover Protective Structure [ROPS])	ISO 12117-2:2008
Operator Protective Guards (OPG) (optional top/front guards)	ISO 10262:1998 Level II
Cab/Sound Levels	Meets appropriate standards as listed below

## Sound Performance

Operator Sound	
2000/14/EC	70 dB(A)
Spectator Sound	
2000/14/EC	102 dB(A)

- Hearing protection may be needed when operating with an open operator station and cab (when not properly maintained for doors/windows open) for extended periods or in noisy environment(s).

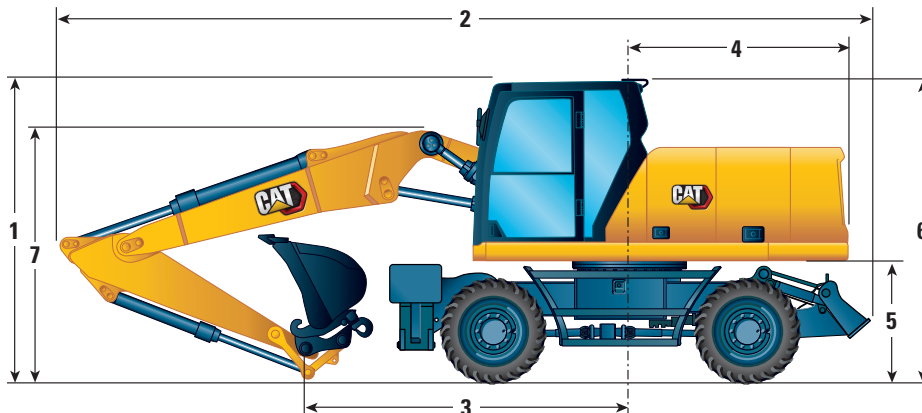
## Air Conditioning System

The air conditioning system on this machine contains the fluorinated greenhouse gas refrigerant R134a (Global Warming Potential = 1430). The system contains 0.85 kg of refrigerant which has a CO<sub>2</sub> equivalent of 1.216 metric tonnes.

# M318 Wheeled Excavator Specifications

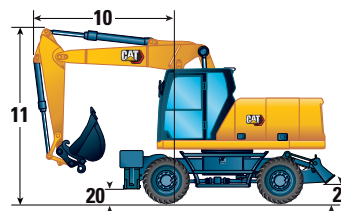
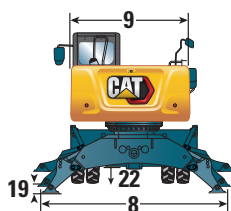
## Dimensions

All Dimensions are approximate. Values are with 10.00-20 Dual Pneumatic Tires.



Boom Option	Variable Adjustable Boom 5205 mm (17'1")	
Stick Options	Bucket Linkage 2500 mm (8'2")	Bucket Linkage 2900 mm (9'6")
<b>1</b> Shipping Height		
With Operator Protective Guards (highest point between boom and cab)	3360 mm (11'0")	3360 mm (11'0")
Without Operator Protective Guards	3220 mm (10'7")	3350 mm (10'12")
<b>2</b> Shipping Length	8420 mm (27'7")	8690 mm (28'6")
<b>3</b> Support Point	3520 mm (11'7")	3340 mm (10'11")
<b>4</b> Tail Swing Radius	2350 mm (7'9")	2350 mm (7'9")
<b>5</b> Counterweight Clearance	1300 mm (4'3")	1300 mm (4'3")
<b>6</b> Cab Height		
No Operator Protective Guards	3200 mm (10'6")	3200 mm (10'6")
With Operator Protective Guards	3320 mm (10'11")	3320 mm (10'11")
With Roof Wiper Guard	3420 mm (11'3")	3420 mm (11'3")
<b>7</b> Linkage Height Including Hydraulic Lines at Shipping Position (from ground to top of hydraulic lines)	3220 mm (10'7")	3350 mm (11'0")
<b>Overall Machine Width</b>		
Width with Outriggers on Ground	3820 mm (12'6")	3820 mm (12'6")
Width with Outriggers Up	2540 mm (8'4")	2540 mm (8'4")
Width with Blade	2540 mm (8'4")	2540 mm (8'4")
<b>8</b> Width with Outriggers Fully Down	3650 mm (12'0")	3650 mm (12'0")
Enclosure Height (doors)	2500 mm (8'2")	2500 mm (8'2")
<b>9</b> Upperframe Width	2540 mm (8'4")	2540 mm (8'4")
<b>Roading Position</b>		
<b>10</b> Steering Wheel to Linkage in Roading Position	2870 mm (9'5")	2890 mm (9'6")
<b>11</b> Height in Roading Position	2890 mm (9'6")	3980 mm (13'1")

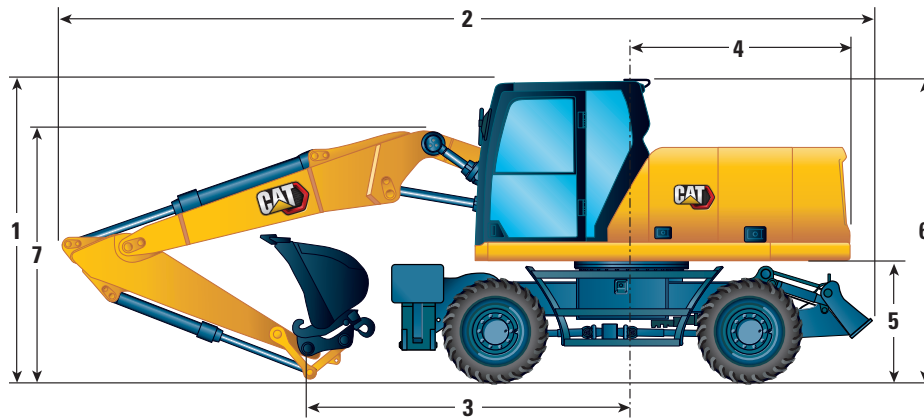
\*Without bucket linkage.



# M318 Wheeled Excavator Specifications

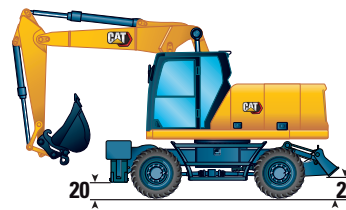
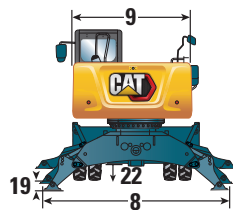
## Dimensions

All Dimensions are approximate. Values are with 10.00-20 Dual Pneumatic Tires.



Boom Option	One-Piece Boom 5100 mm (16'9")	
Stick Options	Bucket Linkage 2500 mm (8'2")	Bucket Linkage 2900 mm (9'6")
<b>1</b> Shipping Height		
With Operator Protective Guards (highest point between boom and cab)	3360 mm (11'0")	3360 mm (11'0")
Without Operator Protective Guards	3090 mm (10'2")	3220 mm (10'7")
<b>2</b> Shipping Length	8600 mm (28'3")	8620 mm (28'3")
<b>3</b> Support Point	3090 mm (10'2")	2830 mm (9'3")
<b>4</b> Tail Swing Radius	2350 mm (7'9")	2350 mm (7'9")
<b>5</b> Counterweight Clearance	1300 mm (4'3")	1300 mm (4'3")
<b>6</b> Cab Height		
No Operator Protective Guards	3200 mm (10'6")	3200 mm (10'6")
With Operator Protective Guards	3360 mm (11'0")	3360 mm (11'0")
With Roof Wiper Guard	3420 mm (11'3")	3420 mm (11'3")
<b>7</b> Linkage Height Including Hydraulic Lines at Shipping Position (from ground to top of hydraulic lines)	3090 mm (10'2")	3220 mm (10'7")
<b>Overall Machine Width</b>		
Width with Outriggers on Ground	3820 mm (12'6")	3820 mm (12'6")
Width with Outriggers Up	2540 mm (8'4")	2540 mm (8'4")
Width with Blade	2540 mm (8'4")	2540 mm (8'4")
<b>8</b> Width with Outriggers Fully Down	3650 mm (12'0")	3650 mm (12'0")
Enclosure Height (doors)	2500 mm (8'2")	2500 mm (8'2")
<b>9</b> Upperframe Width	2540 mm (8'4")	2540 mm (8'4")

\*Without bucket linkage.



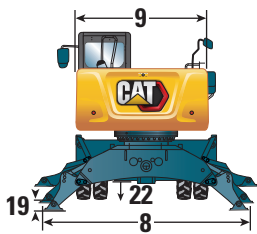
# M318 Wheeled Excavator Specifications

## Undercarriage Dimensions

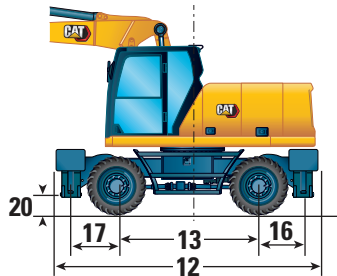
All Dimensions are approximate. Values are with 10.00-20 Dual Pneumatic Tires.

Undercarriage	Rear Blade/Front Outrigger	Rear Outrigger/Front Blade	Rear Outrigger/Front Outrigger
<b>12</b> Overall Undercarriage Length	5050 mm (16'7")	5050 mm (16'7")	4955 mm (16'3")
<b>13</b> Wheel Base	2700 mm (8'10")	2700 mm (8'10")	2700 mm (8'10")
<b>14</b> Swing to Rear Axle	1250 mm (4'1")	1250 mm (4'1")	1250 mm (4'1")
<b>15</b> Swing to Front Axle	1450 mm (4'9")	1450 mm (4'9")	1450 mm (4'9")
<b>16</b> Rear Axle to Rear Outrigger (mid)	—	830 mm (2'9")	830 mm (2'9")
<b>17</b> Front Axle to Front Outrigger (mid)	875 mm (2'10")	—	875 mm (2'10")
<b>18</b> Rear Axle to Blade (end)	1200 mm (3'11")	—	—
Front Axle to Blade (end)	—	1245 mm (4'1")	—
<b>19</b> Maximum Outrigger Depth below Ground	120 mm (0'5")	120 mm (0'5")	120 mm (0'5")
Blade Width	2540 mm (8'4")	2540 mm (8'4")	—
Maximum Blade Depth below Ground	130 mm (0'5")	130 mm (0'5")	—
Ground Clearance			
Lowest Step Clearance	420 mm (1'5")	420 mm (1'5")	420 mm (1'5")
<b>20</b> Outrigger Clearance	325 mm (1'1")	325 mm (1'1")	325 mm (1'1")
<b>21</b> Blade Clearance (parallel)	495 mm (1'7")	495 mm (1'7")	495 mm (1'7")
<b>22</b> Axle Clearance	360 mm (1'2")	360 mm (1'2")	360 mm (1'2")

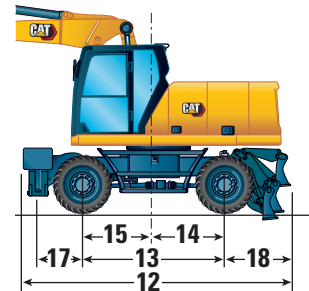
\*Maximum tire clearance with outrigger fully down



Undercarriage with 2 sets of outriggers



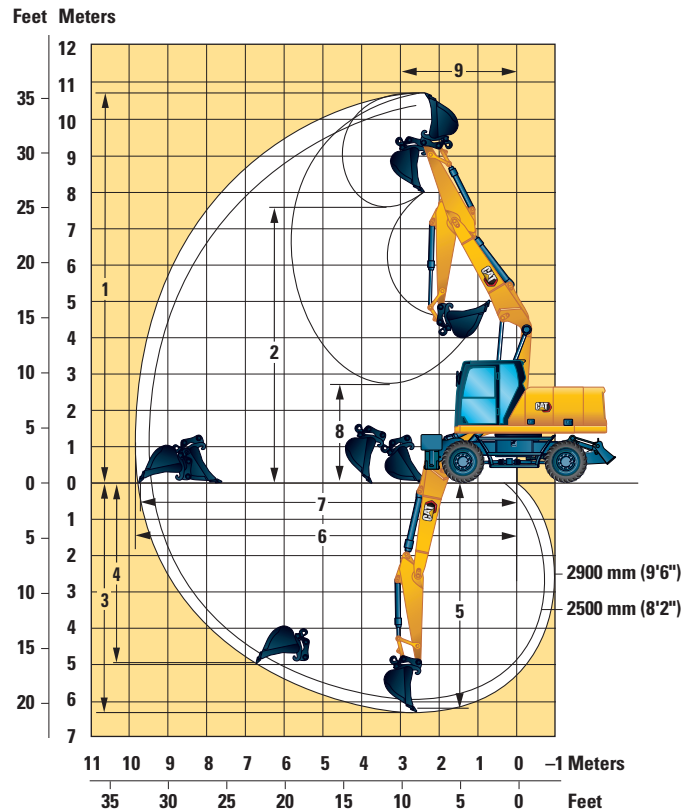
Undercarriage with 1 set of outriggers and dozer



# M318 Wheeled Excavator Specifications

## Working Ranges

All Dimensions are approximate. Values are with 10.00-20 Dual Pneumatic Tires.



Boom Option	Variable Adjustable Boom 5205 mm (17'1")	
Stick Options	Bucket Linkage 2500 mm (8'2")	Bucket Linkage 2900 mm (9'6")
1 Maximum Cutting Height	10 260 mm (33'8")	10 580 mm (34'9")
2 Maximum Loading Height	7300 mm (23'11")	7620 mm (25'0")
3 Maximum Digging Depth	5890 mm (19'4")	6290 mm (20'8")
4 Maximum Vertical Wall Digging Depth	4600 mm (15'1")	4980 mm (16'4")
5 Maximum Depth Cut for 2440 mm (8'0") Level Bottom	5790 mm (19'0")	6190 mm (20'4")
6 Maximum Reach	9390 mm (30'10")	9770 mm (32'1")
7 Maximum Reach at Ground Line	9210 mm (30'3")	9610 mm (31'6")
8 Minimum Loading Height	2970 mm (9'9")	2590 mm (8'6")
9 Minimum Front Swing Radius	2900 mm (9'6")	3030 mm (9'11")
Bucket Forces (ISO)	119 kN (26,752 lbf)	119 kN (26,752 lbf)
Stick Forces (ISO)	75 kN (16,861 lbf)	67 kN (15,062 lbf)
Bucket Type	GD	GD
Bucket Capacity	0.8 m <sup>3</sup> (1.05 yd <sup>3</sup> )	0.8 m <sup>3</sup> (1.05 yd <sup>3</sup> )
Bucket Tip Radius (Pin-On)	1378 mm (4'6")	1378 mm (4'6")
Bucket Tip Radius (QC)	1484 mm (4'10")	1484 mm (4'10")

Range values are with dual pneumatic tires (10.00-20).

Range values are calculated with a GD bucket (CW) and CW-30 quick coupler with a tip radius of 1484 mm (4'10").

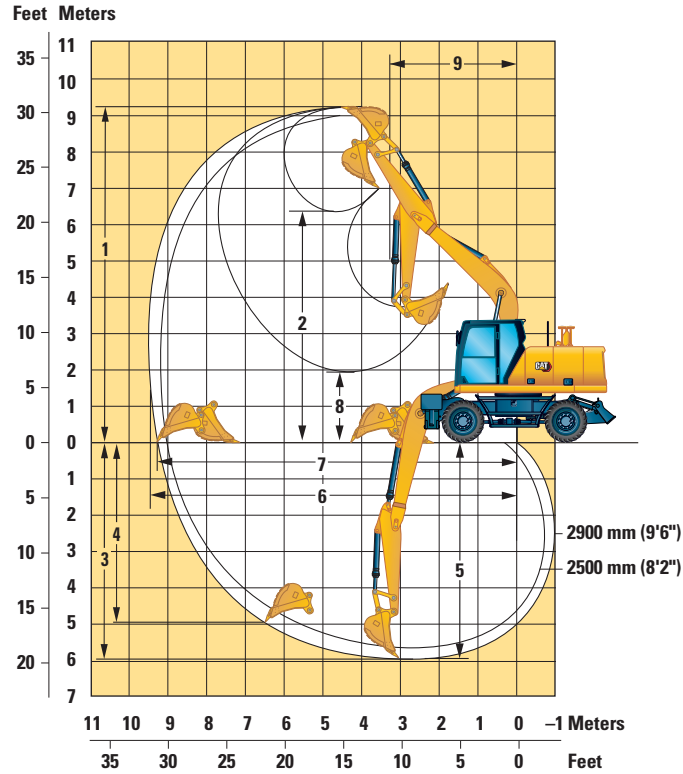
Force values are calculated with heavy lift on, a GD bucket (pin-on) and a tip radius of 1378 mm (4'6").



# M318 Wheeled Excavator Specifications

## Working Ranges

All Dimensions are approximate. Values are with 10.00-20 Dual Pneumatic Tires.



### Boom Option

### One-Piece Boom 5100 mm (16'9")

### Stick Options

### Bucket Linkage 2500 mm (8'2")

### Bucket Linkage 2900 mm (9'6")

	2500 mm (8'2")	2900 mm (9'6")
1 Maximum Cutting Height	9060 mm (29'9")	9280 mm (30'5")
2 Maximum Loading Height	6220 mm (20'5")	6440 mm (21'2")
3 Maximum Digging Depth	5580 mm (18'4")	5980 mm (19'7")
4 Maximum Vertical Wall Digging Depth	4520 mm (14'10")	4920 mm (16'2")
5 Maximum Depth Cut for 2440 mm (8'0") Level Bottom	5380 mm (17'8")	5800 mm (19'0")
6 Maximum Reach	9190 mm (30'2")	9570 mm (31'5")
7 Maximum Reach at Ground Line	9010 mm (29'7")	9400 mm (30'10")
8 Minimum Loading Height	2330 mm (7'8")	1930 mm (6'4")
9 Minimum Front Swing Radius	3350 mm (11'0")	3320 mm (10'11")
Bucket Forces (ISO)	119 kN (26,752 lbf)	119 kN (26,752 lbf)
Stick Forces (ISO)	75 kN (16,861 lbf)	67 kN (15,062 lbf)
Bucket Type	GD	GD
Bucket Capacity	0.8 m <sup>3</sup> (1.05 yd <sup>3</sup> )	0.8 m <sup>3</sup> (1.05 yd <sup>3</sup> )
Bucket Tip Radius (Pin-On)	1378 mm (4'6")	1378 mm (4'6")
Bucket Tip Radius (QC)	1484 mm (4'10")	1484 mm (4'10")

Range values are with dual pneumatic tires (10.00-20).

Range values are calculated with a GD bucket (CW) and CW-30 quick coupler with a tip radius of 1484 mm (4'10").

Force values are calculated with heavy lift on, a GD bucket (pin-on) and a tip radius of 1378 mm (4'6").

# M318 Wheeled Excavator Specifications

## Lift Capacities – Variable Adjustable Boom (5205 mm), 2.5 m Stick

All values are in kg, work tool: none, bucket cylinder and bucket linkage installed, counterweight: 4200 kg, heavy lift function on.

		Load at maximum reach (sticknose/bucket pin)			Load over front			Load over rear			Load over side			Load point height						
	Undercarriage configuration	3000 mm			4500 mm			6000 mm			7500 mm						mm			
7500 mm	Front parallel dozer – rear stabilizer – lowered				*5150	*5150	*5150										*3600	*3600	*3600	5310
	Front stabilizer – rear stabilizer – lowered				*5150	*5150	*5150										*3600	*3600	*3600	
6000 mm	Front parallel dozer – rear stabilizer – lowered				*5100	*5100	*5100	*4750	*4750	*4750							*3100	*3100	*3100	6630
	Front stabilizer – rear stabilizer – lowered				*5100	*5100	*5100	*4750	*4750	*4750							*3100	*3100	*3100	
4500 mm	Front parallel dozer – rear stabilizer – lowered				*6150	*6150	*6150	*4850	*4850	*4850							*2950	*2950	*2950	7400
	Front stabilizer – rear stabilizer – lowered				*6150	*6150	*6150	*4850	*4850	*4850							*2950	*2950	*2950	
3000 mm	Front parallel dozer – rear stabilizer – lowered				*7150	*7150	*7150	*5150	*5150	5000	*4150	*4150	3550				*2900	*2900	*2900	7810
	Front stabilizer – rear stabilizer – lowered				*7150	*7150	*7150	*5150	*5150	5150	*4150	*4150	4150				*2900	*2900	*2900	
1500 mm	Front parallel dozer – rear stabilizer – lowered				*8550	*8550	7300	*5650	*5650	4800	*4350	*4350	3450				*3050	*3050	*3050	7900
	Front stabilizer – rear stabilizer – lowered				*8550	*8550	*8550	*5650	*5650	*5650	*4350	*4350	4100				*3050	*3050	*3050	
0 mm	Front parallel dozer – rear stabilizer – lowered				*8500	*8500	7100	*6200	*6200	4650	*4600	*4600	3400				*3350	*3350	3300	7700
	Front stabilizer – rear stabilizer – lowered				*8500	*8500	*8500	*6200	*6200	5600	*4600	*4600	4050				*3350	*3350	*3350	
-1500 mm	Front parallel dozer – rear stabilizer – lowered	*6950	*6950	*6950	*7650	*7650	7050	*5600	*5600	4650							*3900	*3900	3650	7160
	Front stabilizer – rear stabilizer – lowered	*6950	*6950	*6950	*7650	*7650	*7650	*5600	*5600	5550							*3900	*3900	*3900	
-3000 mm	Front parallel dozer – rear stabilizer – lowered				*5850	*5850	*5850	*3900	*3900	*3900										
	Front stabilizer – rear stabilizer – lowered				*5850	*5850	*5850	*3900	*3900	*3900										

\*Limited by hydraulic rather than tipping load.

Oscillating axle needs to be locked. Weight of all lifting accessories must be subtracted from the lifting capacities. All lift capacities calculated and rated per ISO 10567:2007. Rated loads do not exceed 87% of hydraulic lift capacity or 75% of tipping load. Heavy Lift Function ON. Lifting capacities are based on the machine standing on a firm uniform supporting surface. The load point is the center line of the bucket pivot mounting pin on the stick. Lift capacity is calculated with VA cylinder completely extracted. The use of a work tool attachment point to handle/lift objects, could affect the machine lift performance.

Always refer to the appropriate Operation and Maintenance Manual for specific product information.

## Lift Capacities – Variable Adjustable Boom (17'1"), 8'2" Stick

All values are in lb, work tool: none, bucket cylinder and bucket linkage installed, counterweight: 9,260 lb, heavy lift function on.

		Load at maximum reach (sticknose/bucket pin)			Load over front			Load over rear			Load over side			Load point height						
	Undercarriage configuration	10 ft			15 ft			20 ft			25 ft						ft			
25 ft	Front parallel dozer – rear stabilizer – lowered				*11,100	*11,100	*11,100										*8,100	*8,100	*8,100	16.93
	Front stabilizer – rear stabilizer – lowered				*11,100	*11,100	*11,100										*8,100	*8,100	*8,100	
20 ft	Front parallel dozer – rear stabilizer – lowered				*11,300	*11,300	*11,300	*10,200	*10,200	*10,200							*6,900	*6,900	*6,900	21.52
	Front stabilizer – rear stabilizer – lowered				*11,300	*11,300	*11,300	*10,200	*10,200	*10,200							*6,900	*6,900	*6,900	
15 ft	Front parallel dozer – rear stabilizer – lowered				*13,300	*13,300	*13,300	*10,600	*10,600	*10,600							*6,500	*6,500	*6,500	24.21
	Front stabilizer – rear stabilizer – lowered				*13,300	*13,300	*13,300	*10,600	*10,600	*10,600							*6,500	*6,500	*6,500	
10 ft	Front parallel dozer – rear stabilizer – lowered				*15,400	*15,400	*15,400	*11,200	*11,200	10,700	*9,000	*9,000	7,600				*6,400	*6,400	*6,400	25.59
	Front stabilizer – rear stabilizer – lowered				*15,400	*15,400	*15,400	*11,200	*11,200	*11,200	*9,000	*9,000	9,000				*6,400	*6,400	*6,400	
5 ft	Front parallel dozer – rear stabilizer – lowered				*18,400	*18,400	15,800	*12,200	*12,200	10,300	*9,400	*9,400	7,500				*6,700	*6,700	*6,700	25.92
	Front stabilizer – rear stabilizer – lowered				*18,400	*18,400	*18,400	*12,200	*12,200	*12,200	*9,400	*9,400	8,900				*6,700	*6,700	*6,700	
0 ft	Front parallel dozer – rear stabilizer – lowered				*18,500	*18,500	15,300	*13,300	*13,300	10,100	*9,100	*9,100	7,400				*7,300	*7,300	7,300	25.26
	Front stabilizer – rear stabilizer – lowered				*18,500	*18,500	*18,500	*13,300	*13,300	12,100	*9,100	*9,100	8,800				*7,300	*7,300	*7,300	
-5 ft	Front parallel dozer – rear stabilizer – lowered	*15,900	*15,900	*15,900	*16,600	*16,600	15,200	*12,100	*12,100	10,000							*8,600	*8,600	8,100	23.46
	Front stabilizer – rear stabilizer – lowered	*15,900	*15,900	*15,900	*16,600	*16,600	*16,600	*12,100	*12,100	12,000							*8,600	*8,600	*8,600	
-10 ft	Front parallel dozer – rear stabilizer – lowered				*12,500	*12,500	*12,500	*7,900	*7,900	*7,900										
	Front stabilizer – rear stabilizer – lowered				*12,500	*12,500	*12,500	*7,900	*7,900	*7,900										

\*Limited by hydraulic rather than tipping load.

Oscillating axle needs to be locked. Weight of all lifting accessories must be subtracted from the lifting capacities. All lift capacities calculated and rated per ISO 10567:2007. Rated loads do not exceed 87% of hydraulic lift capacity or 75% of tipping load. Heavy Lift Function ON. Lifting capacities are based on the machine standing on a firm uniform supporting surface. The load point is the center line of the bucket pivot mounting pin on the stick. Lift capacity is calculated with VA cylinder completely extracted. The use of a work tool attachment point to handle/lift objects, could affect the machine lift performance.

Always refer to the appropriate Operation and Maintenance Manual for specific product information.

# M318 Wheeled Excavator Specifications

## Lift Capacities – Variable Adjustable Boom (5205 mm), 2.9 m Stick

All values are in kg, work tool: none, bucket cylinder and bucket linkage installed, counterweight: 4200 kg, heavy lift function on.

Stick Length	Undercarriage configuration	Load at maximum reach (sticknose/bucket pin)			Load over front			Load over rear			Load over side			Load point height			mm				
		3000 mm	4500 mm	6000 mm	7500 mm	3000 mm	4500 mm	6000 mm	7500 mm	3000 mm	4500 mm	6000 mm	7500 mm	3000 mm	4500 mm	6000 mm					
9000 mm	Front parallel dozer – rear stabilizer – lowered																*4100	*4100	*4100	3700	
	Front stabilizer – rear stabilizer – lowered																	*4100	*4100		*4100
7500 mm	Front parallel dozer – rear stabilizer – lowered																	*2950	*2950	*2950	5880
	Front stabilizer – rear stabilizer – lowered																	*2950	*2950	*2950	
6000 mm	Front parallel dozer – rear stabilizer – lowered				*4250	*4250	*4250	*4350	*4350	*4350								*2600	*2600	*2600	7090
	Front stabilizer – rear stabilizer – lowered				*4250	*4250	*4250	*4350	*4350	*4350								*2600	*2600	*2600	
4500 mm	Front parallel dozer – rear stabilizer – lowered				*4850	*4850	*4850	*4700	*4700	*4700	*3650	*3650	3600					*2450	*2450	*2450	7820
	Front stabilizer – rear stabilizer – lowered				*4850	*4850	*4850	*4700	*4700	*4700	*3650	*3650	*3650					*2450	*2450	*2450	
3000 mm	Front parallel dozer – rear stabilizer – lowered				*6800	*6800	*6800	*5000	*5000	*5000	*4000	*4000	3550					*2450	*2450	*2450	8200
	Front stabilizer – rear stabilizer – lowered				*6800	*6800	*6800	*5000	*5000	*5000	*4000	*4000	*4000					*2450	*2450	*2450	
1500 mm	Front parallel dozer – rear stabilizer – lowered				*8100	*8100	7400	*5450	*5450	4800	*4200	*4200	3450					*2550	*2550	*2550	8290
	Front stabilizer – rear stabilizer – lowered				*8100	*8100	*8100	*5450	*5450	4800	*4200	*4200	4100					*2550	*2550	*2550	
0 mm	Front parallel dozer – rear stabilizer – lowered				*8550	*8550	7100	*6000	*6000	4650	*4450	*4450	3400					*2750	*2750	*2750	8090
	Front stabilizer – rear stabilizer – lowered				*8550	*8550	*8550	*6000	*6000	5600	*4450	*4450	4050					*2750	*2750	*2750	
-1500 mm	Front parallel dozer – rear stabilizer – lowered	*6500	*6500	*6500	*7950	*7950	7000	*5800	*5800	4600	*4000	*4000	3400					*3150	*3150	*3150	7590
	Front stabilizer – rear stabilizer – lowered	*6500	*6500	*6500	*7950	*7950	*7950	*5800	*5800	5550	*4000	*4000	*4000					*3150	*3150	*3150	
-3000 mm	Front parallel dozer – rear stabilizer – lowered	*8600	*8600	*8600	*6400	*6400	*6400	*4550	*4550	*4550								*3450	*3450	*3450	6700
	Front stabilizer – rear stabilizer – lowered	*8600	*8600	*8600	*6400	*6400	*6400	*4550	*4550	*4550								*3450	*3450	*3450	

\*Limited by hydraulic rather than tipping load.

Oscillating axle needs to be locked. Weight of all lifting accessories must be subtracted from the lifting capacities. All lift capacities calculated and rated per ISO 10567:2007. Rated loads do not exceed 87% of hydraulic lift capacity or 75% of tipping load. Heavy Lift Function ON. Lifting capacities are based on the machine standing on a firm uniform supporting surface. The load point is the center line of the bucket pivot mounting pin on the stick. Lift capacity is calculated with VA cylinder completely extracted. The use of a work tool attachment point to handle/lift objects, could affect the machine lift performance.

Always refer to the appropriate Operation and Maintenance Manual for specific product information.

## Lift Capacities – Variable Adjustable Boom (17'1"), 9'6" Stick

All values are in lb, work tool: none, bucket cylinder and bucket linkage installed, counterweight: 9,260 lb, heavy lift function on.

Stick Length	Undercarriage configuration	Load at maximum reach (sticknose/bucket pin)			Load over front			Load over rear			Load over side			Load point height			ft					
		10 ft	15 ft	20 ft	25 ft	10 ft	15 ft	20 ft	25 ft	10 ft	15 ft	20 ft	25 ft	10 ft	15 ft	20 ft						
25 ft	Front parallel dozer – rear stabilizer – lowered				*9,900	*9,900	*9,900											*6,600	*6,600	*6,600	18.86	
	Front stabilizer – rear stabilizer – lowered				*9,900	*9,900	*9,900												*6,600	*6,600		*6,600
20 ft	Front parallel dozer – rear stabilizer – lowered				*9,400	*9,400	*9,400	*9,400	*9,400	*9,400									*5,700	*5,700	*5,700	23.06
	Front stabilizer – rear stabilizer – lowered				*9,400	*9,400	*9,400	*9,400	*9,400	*9,400									*5,700	*5,700	*5,700	
15 ft	Front parallel dozer – rear stabilizer – lowered				*10,500	*10,500	*10,500	*10,200	*10,200	*10,200	*7,100	*7,100	*7,100						*5,400	*5,400	*5,400	25.56
	Front stabilizer – rear stabilizer – lowered				*10,500	*10,500	*10,500	*10,200	*10,200	*10,200	*7,100	*7,100	*7,100						*5,400	*5,400	*5,400	
10 ft	Front parallel dozer – rear stabilizer – lowered				*14,700	*14,700	*14,700	*10,800	*10,800	10,800	*8,700	*8,700	7,600						*5,400	*5,400	*5,400	26.87
	Front stabilizer – rear stabilizer – lowered				*14,700	*14,700	*14,700	*10,800	*10,800	*10,800	*8,700	*8,700	*8,700						*5,400	*5,400	*5,400	
5 ft	Front parallel dozer – rear stabilizer – lowered				*17,400	*17,400	15,900	*11,800	*11,800	10,400	*9,100	*9,100	7,500						*5,600	*5,600	*5,600	27.20
	Front stabilizer – rear stabilizer – lowered				*17,400	*17,400	*17,400	*11,800	*11,800	*11,800	*9,100	*9,100	8,900						*5,600	*5,600	*5,600	
0 ft	Front parallel dozer – rear stabilizer – lowered				*18,600	*18,600	15,300	*12,900	*12,900	10,000	*9,700	*9,700	7,300						*6,100	*6,100	*6,100	26.54
	Front stabilizer – rear stabilizer – lowered				*18,600	*18,600	*18,600	*12,900	*12,900	12,100	*9,700	*9,700	8,700						*6,100	*6,100	*6,100	
-5 ft	Front parallel dozer – rear stabilizer – lowered	*14,800	*14,800	*14,800	*17,200	*17,200	15,100	*12,500	*12,500	9,900									*7,000	*7,000	*7,000	24.87
	Front stabilizer – rear stabilizer – lowered	*14,800	*14,800	*14,800	*17,200	*17,200	*17,200	*12,500	*12,500	11,900									*7,000	*7,000	*7,000	
-10 ft	Front parallel dozer – rear stabilizer – lowered	*18,500	*18,500	*18,500	*13,800	*13,800	*13,800	*9,600	*9,600	*9,600									*7,500	*7,500	*7,500	21.85
	Front stabilizer – rear stabilizer – lowered	*18,500	*18,500	*18,500	*13,800	*13,800	*13,800	*9,600	*9,600	*9,600									*7,500	*7,500	*7,500	

\*Limited by hydraulic rather than tipping load.

Oscillating axle needs to be locked. Weight of all lifting accessories must be subtracted from the lifting capacities. All lift capacities calculated and rated per ISO 10567:2007. Rated loads do not exceed 87% of hydraulic lift capacity or 75% of tipping load. Heavy Lift Function ON. Lifting capacities are based on the machine standing on a firm uniform supporting surface. The load point is the center line of the bucket pivot mounting pin on the stick. Lift capacity is calculated with VA cylinder completely extracted. The use of a work tool attachment point to handle/lift objects, could affect the machine lift performance.

Always refer to the appropriate Operation and Maintenance Manual for specific product information.

# M318 Wheeled Excavator Specifications

## Lift Capacities – One-Piece Boom 5100 mm, 2.5 m Stick

All values are in kg, work tool: none, bucket cylinder and bucket linkage installed, counterweight: 4200 kg, heavy lift function on.

Stick height	Undercarriage configuration	3000 mm			4500 mm			6000 mm			7500 mm			Load point height			mm	
		Load at maximum reach (sticknose/bucket pin)	Load over front	Load over rear	Load over front	Load over rear	Load over side	Load over front	Load over rear	Load over side	Load over front	Load over rear	Load over side	Load point height	Load point height	Load point height		
7500 mm	Front parallel dozer – rear stabilizer – lowered														*3500	*3500	*3500	5010
	Front stabilizer – rear stabilizer – lowered														*3500	*3500	*3500	
6000 mm	Front parallel dozer – rear stabilizer – lowered							*4350	*4350	*4350					*3050	*3050	*3050	6390
	Front stabilizer – rear stabilizer – lowered							*4350	*4350	*4350					*3050	*3050	*3050	
4500 mm	Front parallel dozer – rear stabilizer – lowered				*6450	*6450	*6450	*5650	*5650	5150					*2900	*2900	*2900	7200
	Front stabilizer – rear stabilizer – lowered				*6450	*6450	*6450	*5650	*5650	*5650					*2900	*2900	*2900	
3000 mm	Front parallel dozer – rear stabilizer – lowered				*7900	*7900	7750	*6050	*6050	5000	*3700	*3700	3550		*2950	*2950	*2950	7610
	Front stabilizer – rear stabilizer – lowered				*7900	*7900	*7900	*6050	*6050	5900	*3700	*3700	*3700		*2950	*2950	*2950	
1500 mm	Front parallel dozer – rear stabilizer – lowered				*8700	*8700	7350	*6350	*6350	4800	*4600	*4600	3450		*3150	*3150	*3150	7710
	Front stabilizer – rear stabilizer – lowered				*8700	*8700	*8700	*6350	*6350	5750	*4600	*4600	4100		*3150	*3150	*3150	
0 mm	Front parallel dozer – rear stabilizer – lowered	*4300	*4300	*4300	*8600	*8600	7150	*6250	*6250	4700					*3500	*3500	3450	7500
	Front stabilizer – rear stabilizer – lowered	*4300	*4300	*4300	*8600	*8600	*8600	*6250	*6250	5600					*3500	*3500	*3500	
-1500 mm	Front parallel dozer – rear stabilizer – lowered	*8350	*8350	*8350	*7550	*7550	7050	*5500	*5500	4650					*4200	*4200	3800	6950
	Front stabilizer – rear stabilizer – lowered	*8350	*8350	*8350	*7550	*7550	*7550	*5500	*5500	*5500					*4200	*4200	*4200	
-3000 mm	Front parallel dozer – rear stabilizer – lowered	*7100	*7100	*7100	*5550	*5550	*5550								*3550	*3550	*3550	5960
	Front stabilizer – rear stabilizer – lowered	*7100	*7100	*7100	*5550	*5550	*5550								*3550	*3550	*3550	

\*Limited by hydraulic rather than tipping load.

Oscillating axle needs to be locked. Weight of all lifting accessories must be subtracted from the lifting capacities. All lift capacities calculated and rated per ISO 10567:2007. Rated loads do not exceed 87% of hydraulic lift capacity or 75% of tipping load. Heavy Lift Function ON. Lifting capacities are based on the machine standing on a firm uniform supporting surface. The load point is the center line of the bucket pivot mounting pin on the stick. The use of a work tool attachment point to handle/lift objects, could affect the machine lift performance.

Always refer to the appropriate Operation and Maintenance Manual for specific product information.

## Lift Capacities – One-Piece Boom 16'9", 8'2" Stick

All values are in lb, work tool: none, bucket cylinder and bucket linkage installed, counterweight: 9,260 lb, heavy lift function on.

Stick height	Undercarriage configuration	10 ft			15 ft			20 ft			25 ft			Load point height			ft	
		Load at maximum reach (sticknose/bucket pin)	Load over front	Load over rear	Load over front	Load over rear	Load over side	Load over front	Load over rear	Load over side	Load over front	Load over rear	Load over side	Load point height	Load point height	Load point height		
25 ft	Front parallel dozer – rear stabilizer – lowered														*7,800	*7,800	*7,800	15.91
	Front stabilizer – rear stabilizer – lowered														*7,800	*7,800	*7,800	
20 ft	Front parallel dozer – rear stabilizer – lowered							*8,700	*8,700	*8,700					*6,700	*6,700	*6,700	20.73
	Front stabilizer – rear stabilizer – lowered							*8,700	*8,700	*8,700					*6,700	*6,700	*6,700	
15 ft	Front parallel dozer – rear stabilizer – lowered				*13,900	*13,900	*13,900	*12,300	*12,300	11,100					*6,400	*6,400	*6,400	23.52
	Front stabilizer – rear stabilizer – lowered				*13,900	*13,900	*13,900	*12,300	*12,300	*12,300					*6,400	*6,400	*6,400	
10 ft	Front parallel dozer – rear stabilizer – lowered				*17,100	*17,100	16,700	*13,100	*13,100	10,700					*6,500	*6,500	*6,500	24.97
	Front stabilizer – rear stabilizer – lowered				*17,100	*17,100	*17,100	*13,100	*13,100	12,700					*6,500	*6,500	*6,500	
5 ft	Front parallel dozer – rear stabilizer – lowered				*18,900	*18,900	15,800	*13,800	*13,800	10,400	*8,400	*8,400	7,500		*6,900	*6,900	*6,900	25.30
	Front stabilizer – rear stabilizer – lowered				*18,900	*18,900	*18,900	*13,800	*13,800	12,400	*8,400	*8,400	*8,400		*6,900	*6,900	*6,900	
0 ft	Front parallel dozer – rear stabilizer – lowered	*10,000	*10,000	*10,000	*18,600	*18,600	15,400	*13,500	*13,500	10,100					*7,800	*7,800	7,600	24.61
	Front stabilizer – rear stabilizer – lowered	*10,000	*10,000	*10,000	*18,600	*18,600	*18,600	*13,500	*13,500	12,100					*7,800	*7,800	*7,800	
-5 ft	Front parallel dozer – rear stabilizer – lowered	*19,000	*19,000	*19,000	*16,300	*16,300	15,200	*11,800	*11,800	10,000					*9,300	*9,300	8,400	22.74
	Front stabilizer – rear stabilizer – lowered	*19,000	*19,000	*19,000	*16,300	*16,300	*16,300	*11,800	*11,800	*11,800					*9,300	*9,300	*9,300	
-10 ft	Front parallel dozer – rear stabilizer – lowered	*15,300	*15,300	*15,300	*11,800	*11,800	*11,800								*7,800	*7,800	*7,800	19.42
	Front stabilizer – rear stabilizer – lowered	*15,300	*15,300	*15,300	*11,800	*11,800	*11,800								*7,800	*7,800	*7,800	

\*Limited by hydraulic rather than tipping load.

Oscillating axle needs to be locked. Weight of all lifting accessories must be subtracted from the lifting capacities. All lift capacities calculated and rated per ISO 10567:2007. Rated loads do not exceed 87% of hydraulic lift capacity or 75% of tipping load. Heavy Lift Function ON. Lifting capacities are based on the machine standing on a firm uniform supporting surface. The load point is the center line of the bucket pivot mounting pin on the stick. The use of a work tool attachment point to handle/lift objects, could affect the machine lift performance.

Always refer to the appropriate Operation and Maintenance Manual for specific product information.

# M318 Wheeled Excavator Specifications

## Lift Capacities – One-Piece Boom 5100 mm, 2.9 m Stick

All values are in kg, work tool: none, bucket cylinder and bucket linkage installed, counterweight: 4200 kg, heavy lift function on.

Stick Length	Undercarriage configuration	Load at maximum reach (sticknose/bucket pin)			Load over front			Load over rear			Load over side			Load point height			mm			
		3000 mm	4500 mm	6000 mm	7500 mm	3000 mm	4500 mm	6000 mm	7500 mm	3000 mm	4500 mm	6000 mm	7500 mm	3000 mm	4500 mm	6000 mm				
7500 mm	Front parallel dozer – rear stabilizer – lowered																*2850	*2850	*2850	5580
	Front stabilizer – rear stabilizer – lowered																*2850	*2850	*2850	
6000 mm	Front parallel dozer – rear stabilizer – lowered							*4150	*4150	*4150							*2550	*2550	*2550	6850
	Front stabilizer – rear stabilizer – lowered							*4150	*4150	*4150							*2550	*2550	*2550	
4500 mm	Front parallel dozer – rear stabilizer – lowered							*4950	*4950	*4950	*2900	*2900	*2900	*2450	*2450	*2450				7600
	Front stabilizer – rear stabilizer – lowered							*4950	*4950	*4950	*2900	*2900	*2900	*2450	*2450	*2450				
3000 mm	Front parallel dozer – rear stabilizer – lowered	*11700	*11700	*11700	*7550	*7550	*7550	*5850	*5850	5000	*4250	*4250	3550	*2450	*2450	*2450				8000
	Front stabilizer – rear stabilizer – lowered	*11700	*11700	*11700	*7550	*7550	*7550	*5850	*5850	5000	*4250	*4250	4200	*2450	*2450	*2450				
1500 mm	Front parallel dozer – rear stabilizer – lowered				*8550	*8550	7400	*6250	*6250	4800	*4950	*4950	3450	*2600	*2600	*2600				8090
	Front stabilizer – rear stabilizer – lowered				*8550	*8550	7400	*6250	*6250	4800	*4950	*4950	3450	*2600	*2600	*2600				
0 mm	Front parallel dozer – rear stabilizer – lowered	*4750	*4750	*4750	*8650	*8650	7150	*6300	*6300	4650	*4750	*4750	3400	*2900	*2900	*2900				7890
	Front stabilizer – rear stabilizer – lowered	*4750	*4750	*4750	*8650	*8650	7150	*6300	*6300	4650	*4750	*4750	4050	*2900	*2900	*2900				
-1500 mm	Front parallel dozer – rear stabilizer – lowered	*7750	*7750	*7750	*7900	*7900	7050	*5750	*5750	4600				*3450	*3450	*3450				7360
	Front stabilizer – rear stabilizer – lowered	*7750	*7750	*7750	*7900	*7900	7050	*5750	*5750	4600				*3450	*3450	*3450				
-3000 mm	Front parallel dozer – rear stabilizer – lowered	*8250	*8250	*8250	*6150	*6150	*6150	*4300	*4300	*4300				*3550	*3550	*3550				6440
	Front stabilizer – rear stabilizer – lowered	*8250	*8250	*8250	*6150	*6150	*6150	*4300	*4300	*4300				*3550	*3550	*3550				
-4500 mm	Front parallel dozer – rear stabilizer – lowered				*2850	*2850	*2850							*2250	*2250	*2250				4890
	Front stabilizer – rear stabilizer – lowered				*2850	*2850	*2850							*2250	*2250	*2250				

\*Limited by hydraulic rather than tipping load.

Oscillating axle needs to be locked. Weight of all lifting accessories must be subtracted from the lifting capacities. All lift capacities calculated and rated per ISO 10567:2007. Rated loads do not exceed 87% of hydraulic lift capacity or 75% of tipping load. Heavy Lift Function ON. Lifting capacities are based on the machine standing on a firm uniform supporting surface. The load point is the center line of the bucket pivot mounting pin on the stick. The use of a work tool attachment point to handle/lift objects, could affect the machine lift performance.

Always refer to the appropriate Operation and Maintenance Manual for specific product information.

## Lift Capacities – One-Piece Boom 16'9", 9'6" Stick

All values are in lb, work tool: none, bucket cylinder and bucket linkage installed, counterweight: 9,260 lb, heavy lift function on.

Stick Length	Undercarriage configuration	Load at maximum reach (sticknose/bucket pin)			Load over front			Load over rear			Load over side			Load point height			ft			
		10 ft	15 ft	20 ft	25 ft	10 ft	15 ft	20 ft	25 ft	10 ft	15 ft	20 ft	25 ft	10 ft	15 ft	20 ft				
25 ft	Front parallel dozer – rear stabilizer – lowered																*6,400	*6,400	*6,400	17.88
	Front stabilizer – rear stabilizer – lowered																*6,400	*6,400	*6,400	
20 ft	Front parallel dozer – rear stabilizer – lowered							*8,800	*8,800	*8,800							*5,600	*5,600	*5,600	22.24
	Front stabilizer – rear stabilizer – lowered							*8,800	*8,800	*8,800							*5,600	*5,600	*5,600	
15 ft	Front parallel dozer – rear stabilizer – lowered							*10,700	*10,700	*10,700							*5,400	*5,400	*5,400	24.84
	Front stabilizer – rear stabilizer – lowered							*10,700	*10,700	*10,700							*5,400	*5,400	*5,400	
10 ft	Front parallel dozer – rear stabilizer – lowered	*25,000	*25,000	*25,000	*16,300	*16,300	*16,300	*12,700	*12,700	10,800	*8,600	*8,600	7,600	*5,400	*5,400	*5,400				26.21
	Front stabilizer – rear stabilizer – lowered	*25,000	*25,000	*25,000	*16,300	*16,300	*16,300	*12,700	*12,700	10,800	*8,600	*8,600	8,600	*5,400	*5,400	*5,400				
5 ft	Front parallel dozer – rear stabilizer – lowered				*18,500	*18,500	16,000	*13,500	*13,500	10,400	*10,400	*10,400	7,500	*5,700	*5,700	*5,700				26.54
	Front stabilizer – rear stabilizer – lowered				*18,500	*18,500	16,000	*13,500	*13,500	12,400	*10,400	*10,400	8,900	*5,700	*5,700	*5,700				
0 ft	Front parallel dozer – rear stabilizer – lowered	*10,900	*10,900	*10,900	*18,800	*18,800	15,400	*13,600	*13,600	10,100	*10,100	*10,100	7,300	*6,400	*6,400	*6,400				25.89
	Front stabilizer – rear stabilizer – lowered	*10,900	*10,900	*10,900	*18,800	*18,800	18,700	*13,600	*13,600	12,100	*10,100	*10,100	8,700	*6,400	*6,400	*6,400				
-5 ft	Front parallel dozer – rear stabilizer – lowered	*17,600	*17,600	*17,600	*17,100	*17,100	15,100	*12,400	*12,400	9,900				*7,600	*7,600	*7,600				24.11
	Front stabilizer – rear stabilizer – lowered	*17,600	*17,600	*17,600	*17,100	*17,100	17,100	*12,400	*12,400	11,900				*7,600	*7,600	*7,600				
-10 ft	Front parallel dozer – rear stabilizer – lowered	*17,800	*17,800	*17,800	*13,200	*13,200	*13,200	*9,000	*9,000	*9,000				*7,800	*7,800	*7,800				21.03
	Front stabilizer – rear stabilizer – lowered	*17,800	*17,800	*17,800	*13,200	*13,200	*13,200	*9,000	*9,000	*9,000				*7,800	*7,800	*7,800				
-15 ft	Front parallel dozer – rear stabilizer – lowered				*5,500	*5,500	*5,500													
	Front stabilizer – rear stabilizer – lowered				*5,500	*5,500	*5,500													

\*Limited by hydraulic rather than tipping load.

Oscillating axle needs to be locked. Weight of all lifting accessories must be subtracted from the lifting capacities. All lift capacities calculated and rated per ISO 10567:2007. Rated loads do not exceed 87% of hydraulic lift capacity or 75% of tipping load. Heavy Lift Function ON. Lifting capacities are based on the machine standing on a firm uniform supporting surface. The load point is the center line of the bucket pivot mounting pin on the stick. The use of a work tool attachment point to handle/lift objects, could affect the machine lift performance.

Always refer to the appropriate Operation and Maintenance Manual for specific product information.

# M318 Wheeled Excavator Specifications

## Bucket Specifications and Compatibility – North America

Contact your Cat dealer for special bucket requirements.

	Linkage	Width		Capacity		Weight		Fill	4200 kg (9,260 lb) Counterweight	
									Variable Adjustable Boom	One-Piece Boom
		mm	in	m <sup>3</sup>	yd <sup>3</sup>	kg	lb	%	2900 mm (9'6") Stick	2900 mm (9'6") Stick
									Front dozer and rear stabilizer lowered	
<b>Pin-On (No Quick Coupler)</b>										
General Duty	316	600	24	0.35	0.46	454	1,001	100	●	●
	316	750	30	0.49	0.64	516	1,137	100	●	●
	316	900	36	0.62	0.81	580	1,278	100	●	●
	316	1050	42	0.76	1.00	629	1,386	100	●	●
	316	1050	42	0.76	1.00	620	1,367	100	●	●
General Duty – Wide Tip	316	1200	48	0.91	1.19	697	1,538	100	●	●
	316	600	24	0.42	0.55	473	1,042	100	●	●
	316	750	30	0.58	0.76	535	1,179	100	●	●
Severe Duty	316	1050	42	0.90	1.18	670	1,478	100	●	●
	316	1200	48	1.07	1.40	737	1,625	100	●	●
	316	600	24	0.35	0.46	505	1,113	90	●	●
Clean Up	316	750	30	0.49	0.64	578	1,274	90	●	●
	316	900	36	0.62	0.81	653	1,440	90	●	●
	316	1050	42	0.76	1.00	708	1,561	90	●	●
	316	1200	48	0.91	1.19	785	1,731	90	●	●
Ditch Cleaning Tilt	316	1500	60	1.24	1.62	770	1,698	100	⊙	●
	316	1500	60	0.64	0.84	830	1,829	100	●	●
	316	1800	72	0.78	1.02	928	2,046	100	●	●
	316	2000	79	0.86	1.12	1043	2,299	100	●	●
Maximum load with pin-on (payload + bucket)								kg	3118	3292
								lb	6,874	7,258

The above loads are in compliance with hydraulic excavator standard EN474-5:2006+A3:2013, they do not exceed 87% of hydraulic lifting capacity or 75% of tipping capacity with front linkage fully extended at ground line with bucket curled. Capacity based on ISO 7451:2007.

**Maximum Material Density:**

- 2100 kg/m<sup>3</sup> (3,500 lb/yd<sup>3</sup>)
- ⊙ 1800 kg/m<sup>3</sup> (3,000 lb/yd<sup>3</sup>)

Caterpillar recommends using appropriate work tools to maximize the value customers receive from our products. Use of work tools, including buckets, which are outside of Caterpillar's recommendations or specifications for weight, dimensions, flows, pressures, etc. may result in less-than-optimal performance, including but not limited to reductions in production, stability, reliability, and component durability. Improper use of a work tool resulting in sweeping, prying, twisting and/or catching of heavy loads will reduce the life of the boom and stick.

*(continued on next page)*

# M318 Wheeled Excavator Specifications

## Bucket Specifications and Compatibility – North America (continued)

Contact your Cat dealer for special bucket requirements.

	Linkage	Width		Capacity		Weight		Fill	4200 kg (9,260 lb) Counterweight		
		mm	in	m <sup>3</sup>	yd <sup>3</sup>	kg	lb		%	Variable Adjustable Boom	One-Piece Boom
										2900 mm (9'6") Stick	2900 mm (9'6") Stick
Front dozer and rear stabilizer lowered											
<b>With Pin Grabber Coupler</b>											
General Duty	316	600	24	0.35	0.46	454	1,001	100	●	●	
	316	750	30	0.49	0.64	516	1,137	100	●	●	
	316	900	36	0.62	0.81	580	1,278	100	●	●	
	316	1050	42	0.76	1.00	629	1,386	100	●	●	
	316	1050	42	0.76	1.00	620	1,367	100	●	●	
General Duty – Wide Tip	316	1200	48	0.91	1.19	697	1,538	100	●	●	
	316	600	24	0.42	0.55	473	1,042	100	●	●	
	316	750	30	0.58	0.76	535	1,179	100	●	●	
Severe Duty	316	1050	42	0.90	1.18	670	1,478	100	●	●	
	316	1200	48	1.07	1.40	737	1,625	100	⊙	●	
	316	600	24	0.35	0.46	505	1,113	90	●	●	
	316	750	30	0.49	0.64	578	1,274	90	●	●	
General Duty – Pin Grabber Performance	316	900	36	0.62	0.81	653	1,440	90	●	●	
	316	1050	42	0.76	1.00	708	1,561	90	●	●	
	316	1200	48	0.91	1.19	785	1,731	90	●	●	
	316	600	24	0.33	0.43	436	961	100	●	●	
Severe Duty – Pin Grabber Performance	316	900	36	0.57	0.75	578	1,273	100	●	●	
Clean Up	316	1050	42	0.70	0.92	712	1,570	90	●	●	
Ditch Cleaning Tilt	316	1500	60	1.24	1.62	770	1,698	100	⊖	⊙	
	316	1500	60	0.64	0.84	830	1,829	100	●	●	
	316	1800	72	0.78	1.02	928	2,046	100	●	●	
	316	2000	79	0.86	1.12	1043	2,299	100	●	●	
Maximum load with coupler (payload + bucket)								kg	2787	2961	
								lb	6,144	6,528	

The above loads are in compliance with hydraulic excavator standard EN474-5:2006+A3:2013, they do not exceed 87% of hydraulic lifting capacity or 75% of tipping capacity with front linkage fully extended at ground line with bucket curled. Capacity based on ISO 7451:2007.

### Maximum Material Density:

- 2100 kg/m<sup>3</sup> (3,500 lb/yd<sup>3</sup>)
- ⊙ 1800 kg/m<sup>3</sup> (3,000 lb/yd<sup>3</sup>)
- ⊖ 1500 kg/m<sup>3</sup> (2,500 lb/yd<sup>3</sup>)

Caterpillar recommends using appropriate work tools to maximize the value customers receive from our products. Use of work tools, including buckets, which are outside of Caterpillar's recommendations or specifications for weight, dimensions, flows, pressures, etc. may result in less-than-optimal performance, including but not limited to reductions in production, stability, reliability, and component durability. Improper use of a work tool resulting in sweeping, prying, twisting and/or catching of heavy loads will reduce the life of the boom and stick.

# M318 Wheeled Excavator Specifications

## Bucket Specifications and Compatibility – Africa-Middle East

Contact your Cat dealer for special bucket requirements.

	Linkage	Width		Capacity		Weight		Fill	4200 kg (9,260 lb) Counterweight			
		mm	in	m <sup>3</sup>	yd <sup>3</sup>	kg	lb		One-Piece Boom			
									2500 mm (8'2") Stick		2900 mm (9'6") Stick	
								Front dozer and rear stabilizer lowered	Fully stabilized	Front dozer and rear stabilizer lowered	Fully stabilized	
<b>Pin-On (No Quick Coupler)</b>												
General Duty	316	1300	51	1.00	1.31	695	1,532	100	●	●	●	●
	316	600	24	0.35	0.46	440	969	100	●	●	●	●
	316	900	36	0.62	0.81	546	1,203	100	●	●	●	●
	316	1200	48	0.91	1.19	658	1,450	100	●	●	●	●
Ditch Cleaning	316	2000	78	0.94	1.23	723	1,594	100	●	●	●	●
Ditch Cleaning Tilt	316	2000	79	0.86	1.12	1028	2,266	100	●	●	●	●
Maximum load with pin-on (payload + bucket)								kg	3573	4293	3292	3959
								lb	7,877	9,464	7,258	8,728

	Linkage	Width		Capacity		Weight		Fill	4200 kg (9,260 lb) Counterweight			
		mm	in	m <sup>3</sup>	yd <sup>3</sup>	kg	lb		One-Piece Boom			
									2500 mm (8'2") Stick		2900 mm (9'6") Stick	
								Front dozer and rear stabilizer lowered	Fully stabilized	Front dozer and rear stabilizer lowered	Fully stabilized	
<b>With Pin Grabber Coupler</b>												
General Duty	316	1300	51	1.00	1.31	695	1,532	100	●	●	●	●
	316	600	24	0.35	0.46	440	969	100	●	●	●	●
	316	900	36	0.62	0.81	546	1,203	100	●	●	●	●
	316	1200	48	0.91	1.19	658	1,450	100	●	●	●	●
Ditch Cleaning	316	2000	78	0.94	1.23	723	1,594	100	●	●	●	●
Ditch Cleaning Tilt	316	2000	79	0.86	1.12	1028	2,266	100	●	●	●	●
Maximum load with coupler (payload + bucket)								kg	3242	3962	2961	3628
								lb	7,147	8,734	6,528	7,999

	Linkage	Width		Capacity		Weight		Fill	4200 kg (9,260 lb) Counterweight			
		mm	in	m <sup>3</sup>	yd <sup>3</sup>	kg	lb		One-Piece Boom			
									2500 mm (8'2") Stick		2900 mm (9'6") Stick	
								Front dozer and rear stabilizer lowered	Fully stabilized	Front dozer and rear stabilizer lowered	Fully stabilized	
<b>With CW-30 Coupler</b>												
General Duty	316	600	24	0.35	0.46	439	967	100	●	●	●	●
	316	750	30	0.49	0.64	475	1,047	100	●	●	●	●
	316	900	36	0.62	0.81	534	1,177	100	●	●	●	●
	316	1100	43	0.80	1.04	593	1,307	100	●	●	●	●
	316	1200	48	0.90	1.18	646	1,423	100	●	●	●	●
	316	1300	51	1.00	1.31	677	1,492	100	●	●	●	●
Heavy Duty	316	1300	51	1.00	1.31	694	1,529	100	●	●	●	●
General Duty – Leveling Edge	316	996	39	0.70	0.93	586	1,291	100	●	●	●	●
	316	1200	47	0.91	1.19	672	1,481	100	●	●	●	●
	316	690	27	0.47	0.61	476	1,049	100	●	●	●	●
	316	790	31	0.56	0.73	509	1,122	100	●	●	●	●
	316	1400	55	1.09	1.43	738	1,626	100	●	●	●	●
Ditch Cleaning	316	1800	72	1.10	1.44	646	1,423	100	●	●	●	●
	316	1800	72	1.24	1.62	678	1,496	100	●	●	⊙	●
	316	2100	82	1.45	1.90	760	1,675	100	⊙	●	⊖	●
Ditch Cleaning Tilt	316	1800	72	0.78	1.02	1048	2,310	100	●	●	●	●
	316	2000	79	0.86	1.13	1111	2,449	100	●	●	●	●
Maximum load with coupler (payload + bucket)								kg	3361	4081	3080	3747
								lb	7,409	8,996	6,790	8,261

The above loads are in compliance with hydraulic excavator standard EN474-5:2006+A3:2013, they do not exceed 87% of hydraulic lifting capacity or 75% of tipping capacity with front linkage fully extended at ground line with bucket curled. Capacity based on ISO 7451:2007.

### Maximum Material Density:

- 2100 kg/m<sup>3</sup> (3,500 lb/yd<sup>3</sup>)
- ⊙ 1800 kg/m<sup>3</sup> (3,000 lb/yd<sup>3</sup>)
- ⊖ 1500 kg/m<sup>3</sup> (2,500 lb/yd<sup>3</sup>)

Caterpillar recommends using appropriate work tools to maximize the value customers receive from our products. Use of work tools, including buckets, which are outside of Caterpillar's recommendations or specifications for weight, dimensions, flows, pressures, etc. may result in less-than-optimal performance, including but not limited to reductions in production, stability, reliability, and component durability. Improper use of a work tool resulting in sweeping, prying, twisting and/or catching of heavy loads will reduce the life of the boom and stick.

*(continued on next page)*



# M318 Wheeled Excavator Specifications

## Bucket Specifications and Compatibility – Africa-Middle East (continued)

Contact your Cat dealer for special bucket requirements.

	Linkage	Width		Capacity		Weight		Fill	4200 kg (9,260 lb) Counterweight				
		mm	in	m <sup>3</sup>	yd <sup>3</sup>	kg	lb			One-Piece Boom			
										2500 mm (8'2") Stick		2900 mm (9'6") Stick	
									Front dozer and rear stabilizer lowered	Fully stabilized	Front dozer and rear stabilizer lowered	Fully stabilized	
<b>With CW-30S Coupler</b>													
General Duty	316	600	24	0.35	0.46	423	932	100	●	●	●	●	
	316	750	30	0.49	0.64	471	1,038	100	●	●	●	●	
	316	900	36	0.62	0.81	534	1,177	100	●	●	●	●	
	316	1100	43	0.80	1.04	593	1,307	100	●	●	●	●	
	316	1200	48	0.91	1.18	646	1,423	100	●	●	●	●	
	316	1300	51	1.00	1.31	677	1,492	100	●	●	●	●	
	316	1400	55	1.09	1.43	707	1,558	100	●	●	●	●	
Heavy Duty	316	1200	48	0.91	1.18	663	1,461	100	●	●	●	●	
	316	1300	51	1.00	1.31	695	1,531	100	●	●	●	●	
Ditch Cleaning Tilt	316	2000	79	0.86	1.13	1092	2,407	100	●	●	●	●	
								kg	3369	4089	3088	3755	
								lb	7,427	9,014	6,808	8,278	

The above loads are in compliance with hydraulic excavator standard EN474-5:2006+A3:2013, they do not exceed 87% of hydraulic lifting capacity or 75% of tipping capacity with front linkage fully extended at ground line with bucket curled. Capacity based on ISO 7451:2007.

**Maximum Material Density:**

● 2100 kg/m<sup>3</sup> (3,500 lb/yd<sup>3</sup>)

Caterpillar recommends using appropriate work tools to maximize the value customers receive from our products. Use of work tools, including buckets, which are outside of Caterpillar's recommendations or specifications for weight, dimensions, flows, pressures, etc. may result in less-than-optimal performance, including but not limited to reductions in production, stability, reliability, and component durability. Improper use of a work tool resulting in sweeping, prying, twisting and/or catching of heavy loads will reduce the life of the boom and stick.

# M318 Wheeled Excavator Specifications

## Attachments Offering Guide – North America

Not all Attachments are available in all regions. Consult your Cat dealer for configurations available in your region.

Match

No Match

1800 kg/m<sup>3</sup> (3,000 lb/yd<sup>3</sup>)

### PIN-ON ATTACHMENTS

Undercarriage		Front Blade; Rear Outriggers				Front Outriggers; Rear Blade		Front and Rear Outriggers					
		4200 kg (9,260 lb)				4200 kg (9,260 lb)		4200 kg (9,260 lb)					
Boom Type		1 Piece		Variable Adjustable		1 Piece		Variable Adjustable		1 Piece		Variable Adjustable	
		2.50 m (8'2")	2.90 m (9'6")	2.50 m (8'2")	2.90 m (9'6")	2.50 m (8'2")	2.50 m (8'2")	2.50 m (8'2")	2.90 m (9'6")	2.50 m (8'2")	2.90 m (9'6")		
Hydraulic Hammers	H110 S	✓		✓		✓	✓	✓		✓			
	H115 GC S	✓		✓		✓	✓	✓		✓			
	H115 S	✓		✓		✓	✓	✓		✓			
	H120 S	✓		✓		✓	✓	✓		✓			
Demolition and Sorting Grapples	G314	✓		✓		✓	✓	✓		✓			
	G318	✓		✓		✓	✓	✓		✓			
	G318 WH-800	✓		✓		✓	✓	✓		✓			
	G318 WH-1100												
Mobile Scrap and Demolition Shears	S3015 Flat Top	✓		✓		✓	✓	✓		✓			
Pulverizers	P214 Secondary Pulverizer	✓	✓	✓	✓	✓	✓	✓	✓	✓	✓	✓	✓
	P218 Secondary Pulverizer												
	P318 Primary Pulverizer												
Mulchers	HM4015	✓		✓		✓	✓	✓		✓			
	HM4815	✓		✓		✓	✓	✓		✓			
Compactors (Vibratory Plate)	CVP75	✓		✓		✓	✓	✓		✓			
Orange Peel Grapples	GSH420-500	●		●		●	●	●		●			
	GSH420-600	●		●		●	●	●		●			
	GSH420-750	●		●		●	●	●		●			
	GSH520-500	●		●		●	●	●		●			
	GSH520-600	●		●		●	●	●		●			
	GSH520-750	●		●		●	●	●		●			

(continued on next page)

# M318 Wheeled Excavator Specifications

## Attachments Offering Guide – North America *(continued)*

Not all Attachments are available in all regions. Consult your Cat dealer for configurations available in your region.

Match

No Match

### CAT PIN GRABBER COUPLER ATTACHMENTS

Undercarriage		Front Blade; Rear Outriggers		Front Outriggers; Rear Blade		Front and Rear Outriggers	
Counterweight		4200 kg (9,260 lb)		4200 kg (9,260 lb)		4200 kg (9,260 lb)	
Boom Type		1 Piece	Variable Adjustable	1 Piece	Variable Adjustable	1 Piece	Variable Adjustable
Stick Length		2.50 m (8'2")	2.50 m (8'2")	2.50 m (8'2")	2.50 m (8'2")	2.50 m (8'2")	2.50 m (8'2")
Hydraulic Hammers	H110 S	✓	✓	✓	✓	✓	✓
	H115 GC S	✓	✓	✓	✓	✓	✓
	H115 S	✓	✓	✓	✓	✓	✓
	H120 S	✓	✓	✓	✓	✓	✓
Demolition and Sorting Grapples	G314	✓	✓	✓	✓	✓	✓
	G318 WH-800						
Mobile Scrap and Demolition Shears	S3015 Flat Top	✓	✓	✓	✓	✓	✓
Pulverizers	P214 Secondary Pulverizer	✓	✓	✓	✓	✓	✓
Mulchers	HM4015	✓		✓		✓	
	HM4815	✓		✓		✓	
Compactors (Vibratory Plate)	CVP75	✓	✓	✓	✓	✓	✓

*(continued on next page)*

# M318 Wheeled Excavator Specifications

## Attachments Offering Guide – North America (continued)

Not all Attachments are available in all regions. Consult your Cat dealer for configurations available in your region.

Match

No Match

### S60 DEDICATED COUPLER ATTACHMENTS

Undercarriage		Front Blade; Rear Outriggers					Front Outriggers; Rear Blade			
Counterweight		4200 kg (9,260 lb)					4200 kg (9,260 lb)			
Boom Type		1 Piece		Variable Adjustable			1 Piece		Variable Adjustable	
Stick Length		2.50 m (8'2")	2.90 m (9'6")	2.20 m (7'3")	2.50 m (8'2")	2.90 m (9'6")	2.20 m (7'3")	2.50 m (8'2")	2.20 m (7'3")	2.50 m (8'2")
Hydraulic Hammers	H110 S	✓		✓	✓		✓	✓	✓	✓
	H115 GC S	✓		✓	✓		✓	✓	✓	✓
	H115 S	✓		✓	✓		✓	✓	✓	✓
	H120 S	✓		✓	✓		✓	✓	✓	✓
Demolition and Sorting Grapples	G314	✓		✓	✓		✓	✓	✓	✓
	G318						✓			
	G318 WH-800	✓					✓	✓		
Mobile Scrap and Demolition Shears	S3015 Flat Top	✓		✓	✓		✓	✓	✓	✓
Pulverizers	P214 Secondary Pulverizer	✓	✓	✓	✓	✓	✓	✓	✓	✓
Compactors (Vibratory Plate)	CVP75	✓		✓	✓		✓	✓	✓	✓

### S60 DEDICATED COUPLER ATTACHMENTS (continued)

Undercarriage		Front and Rear Outriggers					
Counterweight		4200 kg (9,260 lb)					
Boom Type		1 Piece			Variable Adjustable		
Stick Length		2.20 m (7'3")	2.50 m (8'2")	2.90 m (9'6")	2.20 m (7'3")	2.50 m (8'2")	2.90 m (9'6")
Hydraulic Hammers	H110 S	✓	✓		✓	✓	
	H115 GC S	✓	✓		✓	✓	
	H115 S	✓	✓		✓	✓	
	H120 S	✓	✓		✓	✓	
Demolition and Sorting Grapples	G314	✓	✓		✓	✓	
	G318	✓					
	G318 WH-800	✓	✓				
Mobile Scrap and Demolition Shears	S3015 Flat Top	✓	✓		✓	✓	
Pulverizers	P214 Secondary Pulverizer	✓	✓	✓	✓	✓	✓
Compactors (Vibratory Plate)	CVP75	✓	✓		✓	✓	

(continued on next page)

# M318 Wheeled Excavator Specifications

## Attachments Offering Guide – North America (continued)

Not all Attachments are available in all regions. Consult your Cat dealer for configurations available in your region.

Match  No Match

### HCS60 DEDICATED COUPLER ATTACHMENTS

Undercarriage		Front Blade; Rear Outriggers		Front Outriggers; Rear Blade		Front and Rear Outriggers	
Counterweight		4200 kg (9,260 lb)		4200 kg (9,260 lb)		4200 kg (9,260 lb)	
Boom Type		1 Piece	Variable Adjustable	1 Piece	Variable Adjustable	1 Piece	Variable Adjustable
Stick Length		2.50 m (8'2")	2.50 m (8'2")	2.50 m (8'2")	2.50 m (8'2")	2.50 m (8'2")	2.50 m (8'2")
Hydraulic Hammers	H110 S	✓	✓	✓	✓	✓	✓
	H115 S	✓	✓	✓	✓	✓	✓
	H120 S	✓	✓	✓	✓	✓	✓
Demolition and Sorting Grapples	G314	✓	✓	✓	✓	✓	✓
	G318						
	G318 WH-800						
Mobile Scrap and Demolition Shears	S3015 Flat Top	✓	✓	✓	✓	✓	✓
Pulverizers	P214 Secondary Pulverizer	✓	✓			✓	✓
Compactors (Vibratory Plate)	CVP75	✓	✓	✓	✓	✓	✓

### HCS65 DEDICATED COUPLER ATTACHMENTS

Undercarriage		Front Blade; Rear Outriggers		Front Outriggers; Rear Blade		Front and Rear Outriggers	
Counterweight		4200 kg (9,260 lb)		4200 kg (9,260 lb)		4200 kg (9,260 lb)	
Boom Type		1 Piece	Variable Adjustable	1 Piece	Variable Adjustable	1 Piece	Variable Adjustable
Stick Length		2.50 m (8'2")	2.50 m (8'2")	2.50 m (8'2")	2.50 m (8'2")	2.50 m (8'2")	2.50 m (8'2")
Hydraulic Hammers	H110 S	✓	✓	✓	✓	✓	✓
	H115 S	✓	✓	✓	✓	✓	✓
	H120 S	✓	✓	✓	✓	✓	✓
Demolition and Sorting Grapples	G314	✓	✓	✓	✓	✓	✓
	G318 WH-800						
Mobile Scrap and Demolition Shears	S3015 Flat Top	✓	✓	✓	✓	✓	✓
Pulverizers	P214 Secondary Pulverizer	✓	✓	✓	✓	✓	✓
Compactors (Vibratory Plate)	CVP75	✓	✓	✓	✓	✓	✓

(continued on next page)

# M318 Wheeled Excavator Specifications

## Attachments Offering Guide – North America (continued)

Not all Attachments are available in all regions. Consult your Cat dealer for configurations available in your region.

Match

### TRS14 (PIN-ON TOP/S60 BOTTOM) ATTACHMENTS

Some attachments require more hydraulic flow and are best suited with a machine that has HP2 circuits and a tiltrotator with a high flow swivel. Check the hydraulic capability of your machine and tiltrotator and the requirements of your attachment to ensure a proper match.

Undercarriage		Front Blade; Rear Outriggers		Front Outriggers; Rear Blade		Front and Rear Outriggers	
Counterweight		4200 kg (9,260 lb)		4200 kg (9,260 lb)		4200 kg (9,260 lb)	
Boom Type		1 Piece	Variable Adjustable	1 Piece	Variable Adjustable	1 Piece	Variable Adjustable
Stick Length		2.50 m (8'2")	2.50 m (8'2")	2.50 m (8'2")	2.50 m (8'2")	2.50 m (8'2")	2.50 m (8'2")
Hydraulic Hammers	H110 GC S	✓	✓	✓	✓	✓	✓
	H110 S	✓	✓	✓	✓	✓	✓
	H115 S	✓	✓	✓	✓	✓	✓
Compactors (Vibratory Plate)	CVP75	✓	✓	✓	✓	✓	✓

**NOTE:** Use hammers on tiltrotators less than 10% of working hours per year or maximum 200 hours per year. Refer to your Operation and Maintenance Manual for recommended hydraulic flow requirements.

### TRS14 (S60 TOP/S60 BOTTOM) ATTACHMENTS

Some attachments require more hydraulic flow and are best suited with a machine that has HP2 circuits and a tiltrotator with a high flow swivel. Check the hydraulic capability of your machine and tiltrotator and the requirements of your attachment to ensure a proper match.

Undercarriage		Front Blade; Rear Outriggers		Front Outriggers; Rear Blade		Front and Rear Outriggers	
Counterweight		4200 kg (9,260 lb)		4200 kg (9,260 lb)		4200 kg (9,260 lb)	
Boom Type		1 Piece	Variable Adjustable	1 Piece	Variable Adjustable	1 Piece	Variable Adjustable
Stick Length		2.50 m (8'2")	2.50 m (8'2")	2.50 m (8'2")	2.50 m (8'2")	2.50 m (8'2")	2.50 m (8'2")
Hydraulic Hammers	H110 GC S	✓	✓	✓	✓	✓	✓
	H110 S	✓	✓	✓	✓	✓	✓
	H115 S	✓	✓	✓	✓	✓	✓
Compactors (Vibratory Plate)	CVP75	✓	✓	✓	✓	✓	✓

**NOTE:** Use hammers on tiltrotators less than 10% of working hours per year or maximum 200 hours per year. Refer to your Operation and Maintenance Manual for recommended hydraulic flow requirements.

### TRS14 (PIN-ON TOP/HCS60 BOTTOM) ATTACHMENTS

Some attachments require more hydraulic flow and are best suited with a machine that has HP2 circuits and a tiltrotator with a high flow swivel. Check the hydraulic capability of your machine and tiltrotator and the requirements of your attachment to ensure a proper match.

Undercarriage		Front Blade; Rear Outriggers		Front Outriggers; Rear Blade		Front and Rear Outriggers	
Counterweight		4200 kg (9,260 lb)		4200 kg (9,260 lb)		4200 kg (9,260 lb)	
Boom Type		1 Piece	Variable Adjustable	1 Piece	Variable Adjustable	1 Piece	Variable Adjustable
Stick Length		2.50 m (8'2")	2.50 m (8'2")	2.50 m (8'2")	2.50 m (8'2")	2.50 m (8'2")	2.50 m (8'2")
Hydraulic Hammers	H110 S	✓	✓	✓	✓	✓	✓
	H115 S	✓	✓	✓	✓	✓	✓
Compactors (Vibratory Plate)	CVP75	✓	✓	✓	✓	✓	✓

**NOTE:** Use hammers on tiltrotators less than 10% of working hours per year or maximum 200 hours per year. Refer to your Operation and Maintenance Manual for recommended hydraulic flow requirements.

(continued on next page)

# M318 Wheeled Excavator Specifications

## Attachments Offering Guide – North America (continued)

Not all Attachments are available in all regions. Consult your Cat dealer for configurations available in your region.

Match

### TRS14 (HCS60 TOP/HCS60 BOTTOM) ATTACHMENTS

Some attachments require more hydraulic flow and are best suited with a machine that has HP2 circuits and a tiltrotator with a high flow swivel. Check the hydraulic capability of your machine and tiltrotator and the requirements of your attachment to ensure a proper match.

Undercarriage		Front Blade; Rear Outriggers		Front Outriggers; Rear Blade		Front and Rear Outriggers	
Counterweight		4200 kg (9,260 lb)		4200 kg (9,260 lb)		4200 kg (9,260 lb)	
Boom Type		1 Piece	Variable Adjustable	1 Piece	Variable Adjustable	1 Piece	Variable Adjustable
Stick Length		2.50 m (8'2")	2.50 m (8'2")	2.50 m (8'2")	2.50 m (8'2")	2.50 m (8'2")	2.50 m (8'2")
Hydraulic Hammers	H110 S	✓	✓	✓	✓	✓	✓
	H115 S	✓	✓	✓	✓	✓	✓
Compactors (Vibratory Plate)	CVP75	✓	✓	✓	✓	✓	✓

**NOTE:** Use hammers on tiltrotators less than 10% of working hours per year or maximum 200 hours per year. Refer to your Operation and Maintenance Manual for recommended hydraulic flow requirements.

### TRS14 (PIN-ON TOP/HCS65 BOTTOM) ATTACHMENTS

Some attachments require more hydraulic flow and are best suited with a machine that has HP2 circuits and a tiltrotator with a high flow swivel. Check the hydraulic capability of your machine and tiltrotator and the requirements of your attachment to ensure a proper match.

Undercarriage		Front Blade; Rear Outriggers		Front Outriggers; Rear Blade		Front and Rear Outriggers	
Counterweight		4200 kg (9,260 lb)		4200 kg (9,260 lb)		4200 kg (9,260 lb)	
Boom Type		1 Piece	Variable Adjustable	1 Piece	Variable Adjustable	1 Piece	Variable Adjustable
Stick Length		2.50 m (8'2")	2.50 m (8'2")	2.50 m (8'2")	2.50 m (8'2")	2.50 m (8'2")	2.50 m (8'2")
Hydraulic Hammers	H110 S	✓	✓	✓	✓	✓	✓
	H115 S	✓	✓	✓	✓	✓	✓
Compactors (Vibratory Plate)	CVP75	✓	✓	✓	✓	✓	✓

**NOTE:** Use hammers on tiltrotators less than 10% of working hours per year or maximum 200 hours per year. Refer to your Operation and Maintenance Manual for recommended hydraulic flow requirements.

### TRS14 (HCS65 TOP/HCS65 BOTTOM) ATTACHMENTS

Some attachments require more hydraulic flow and are best suited with a machine that has HP2 circuits and a tiltrotator with a high flow swivel. Check the hydraulic capability of your machine and tiltrotator and the requirements of your attachment to ensure a proper match.

Undercarriage		Front Blade; Rear Outriggers		Front Outriggers; Rear Blade		Front and Rear Outriggers	
Counterweight		4200 kg (9,260 lb)		4200 kg (9,260 lb)		4200 kg (9,260 lb)	
Boom Type		1 Piece	Variable Adjustable	1 Piece	Variable Adjustable	1 Piece	Variable Adjustable
Stick Length		2.50 m (8'2")	2.50 m (8'2")	2.50 m (8'2")	2.50 m (8'2")	2.50 m (8'2")	2.50 m (8'2")
Hydraulic Hammers	H110 S	✓	✓	✓	✓	✓	✓
	H115 S	✓	✓	✓	✓	✓	✓
Compactors (Vibratory Plate)	CVP75	✓	✓	✓	✓	✓	✓

**NOTE:** Use hammers on tiltrotators less than 10% of working hours per year or maximum 200 hours per year. Refer to your Operation and Maintenance Manual for recommended hydraulic flow requirements.

# M318 Wheeled Excavator Specifications

## Attachments Offering Guide – Africa-Middle East

Not all Attachments are available in all regions. Consult your Cat dealer for configurations available in your region.



Match



No Match



1800 kg/m<sup>3</sup>  
(3,000 lb/yd<sup>3</sup>)



1200 kg/m<sup>3</sup>  
(2,000 lb/yd<sup>3</sup>)



600 kg/m<sup>3</sup>  
(1,000 lb/yd<sup>3</sup>)

### PIN-ON ATTACHMENTS

Undercarriage		Front Blade; Rear Outriggers					
Counterweight		4200 kg (9,260 lb)					
Boom Type		Variable Adjustable			1 Piece		
Stick Length		2.20 m (7'3")	2.50 m (8'2")	2.90 m (9'6")	2.20 m (7'3")	2.50 m (8'2")	2.90 m (9'6")
Hydraulic Hammers	H110 S	✓	✓	✓	✓	✓	✓
	H115 GC	✓	✓	✓	✓	✓	✓
	H115 GC S	✓	✓	✓	✓	✓	✓
	H115 S	✓	✓	✓	✓	✓	✓
	H120 GC	✓	✓		✓	✓	
	H120 GC Side Mount		✓	✓	✓	✓	✓
	H120 S	✓	✓	✓	✓	✓	✓
Demolition and Sorting Grapples	G313 GC	✓	✓	✓	✓	✓	✓
	G314	✓	✓	✓	✓	✓	✓
	G317 GC	✓	✓	✓	✓	✓	✓
	G318		✓		✓	✓	
	G318 WH-800		✓		✓	✓	
	G318 WH-1100				✓		
Mobile Scrap and Demolition Shears	S3015 Flat Top	✓	✓	✓	✓	✓	✓
Pulverizers	P214 Secondary Pulverizer	✓	✓	✓	✓	✓	✓
	P218 Secondary Pulverizer				✓		
	P318 Primary Pulverizer				✓		
Compactors (Vibratory Plate)	CVP75	✓	✓	✓	✓	✓	✓
Orange Peel Grapples	GSH420-500	●	●	●	●	●	●
	GSH420-600	●	●	●	●	●	●
	GSH420-750	●	●	○	●	●	○
	GSH520-500	●	●	●	●	●	●
	GSH520-600	●	●	○	●	●	○
	GSH520-750	●	●		●	●	○
	GSV520 GC-400	●	●	●	●	●	●
	GSV520 GC-500	●	●	●	●	●	●
	GSV520 GC-600	●	●	●	●	●	●
	GSV520 GC-750	●	●	○	●	●	○
	GSV520 GC-1250	◇	◇	◇	◇	◇	◇
	GSV520-400	●	●	●	●	●	●
	GSV520-500	●	●	●	●	●	●
	GSV520-600	●	●	○	●	●	●
	GSV520-750	●	●	○	●	●	○
	GSV520-1250	◇	◇	◇	◇	◇	◇
	GSV420-400	●	●	●	●	●	●
	GSV420-500	●	●	●	●	●	●
	GSV420-600	●	●	●	●	●	●
	GSV420-750	●	●	○	●	●	○
GSV420-1250	◇	◇	◇	◇	◇	◇	
Clamshell Grapples	CTV15-1000	●	○		●	○	
	CTV15-1200	○			○	○	

(continued on next page)



# M318 Wheeled Excavator Specifications

## Attachments Offering Guide – Africa-Middle East (continued)

Not all Attachments are available in all regions. Consult your Cat dealer for configurations available in your region.



Match



No Match



1800 kg/m<sup>3</sup>  
(3,000 lb/yd<sup>3</sup>)



1200 kg/m<sup>3</sup>  
(2,000 lb/yd<sup>3</sup>)



600 kg/m<sup>3</sup>  
(1,000 lb/yd<sup>3</sup>)

### PIN-ON ATTACHMENTS (continued)

Undercarriage		Front Outriggers; Rear Blade					
Counterweight		4200 kg (9,260 lb)					
Boom Type		Variable Adjustable			1 Piece		
Stick Length		2.20 m (7'3")	2.50 m (8'2")	2.90 m (9'6")	2.20 m (7'3")	2.50 m (8'2")	2.90 m (9'6")
Hydraulic Hammers	H110 S	✓	✓	✓	✓	✓	✓
	H115 GC	✓	✓	✓	✓	✓	✓
	H115 GC S	✓	✓	✓	✓	✓	✓
	H115 S	✓	✓	✓	✓	✓	✓
	H120 GC	✓	✓		✓	✓	
	H120 GC Side Mount		✓	✓	✓	✓	✓
	H120 S	✓	✓	✓	✓	✓	✓
Demolition and Sorting Grapples	G313 GC	✓	✓	✓	✓	✓	✓
	G314	✓	✓	✓	✓	✓	✓
	G317 GC	✓	✓	✓	✓	✓	✓
	G318		✓		✓	✓	
	G318 WH-800		✓		✓	✓	
	G318 WH-1100				✓		
Mobile Scrap and Demolition Shears	S3015 Flat Top	✓	✓	✓	✓	✓	✓
Pulverizers	P214 Secondary Pulverizer	✓	✓	✓	✓	✓	✓
	P218 Secondary Pulverizer				✓		
	P318 Primary Pulverizer				✓		
Compactors (Vibratory Plate)	CVP75	✓	✓	✓	✓	✓	✓
Orange Peel Grapples	GSH420-500	●	●	●	●	●	●
	GSH420-600	●	●	●	●	●	●
	GSH420-750	●	●	○	●	●	○
	GSH520-500	●	●	●	●	●	●
	GSH520-600	●	●	○	●	●	○
	GSH520-750	●	●		●	●	○
	GSV520 GC-400	●	●	●	●	●	●
	GSV520 GC-500	●	●	●	●	●	●
	GSV520 GC-600	●	●	●	●	●	●
	GSV520 GC-750	●	●	○	●	●	○
	GSV520 GC-1250	◇	◇	◇	◇	◇	◇
	GSV520-400	●	●	●	●	●	●
	GSV520-500	●	●	●	●	●	●
	GSV520-600	●	●	○	●	●	●
	GSV520-750	●	●	○	●	●	○
	GSV520-1250	◇	◇	◇	◇	◇	◇
	GSV420-400	●	●	●	●	●	●
	GSV420-500	●	●	●	●	●	●
	GSV420-600	●	●	●	●	●	●
	GSV420-750	●	●	○	●	●	○
GSV420-1250	◇	◇	◇	◇	◇	◇	
Clamshell Grapples	CTV15-1000	●	○		●	○	
	CTV15-1200	○			○	○	

(continued on next page)

# M318 Wheeled Excavator Specifications

## Attachments Offering Guide – Africa-Middle East (continued)

Not all Attachments are available in all regions. Consult your Cat dealer for configurations available in your region.

<input checked="" type="checkbox"/> Match	<input type="checkbox"/> No Match	<input checked="" type="checkbox"/> 1800 kg/m <sup>3</sup> (3,000 lb/yd <sup>3</sup> )	<input type="checkbox"/> 1200 kg/m <sup>3</sup> (2,000 lb/yd <sup>3</sup> )	<input type="checkbox"/> 600 kg/m <sup>3</sup> (1,000 lb/yd <sup>3</sup> )
---	-----------------------------------	---	--	---

### PIN-ON ATTACHMENTS (continued)

Undercarriage		Front and Rear Outriggers					
Counterweight		4200 kg (9,260 lb)					
Boom Type		Variable Adjustable			1 Piece		
Stick Length		2.20 m (7'3")	2.50 m (8'2")	2.90 m (9'6")	2.20 m (7'3")	2.50 m (8'2")	2.90 m (9'6")
Hydraulic Hammers	H110 S	✓	✓	✓	✓	✓	✓
	H115 GC	✓	✓	✓	✓	✓	✓
	H115 GC S	✓	✓	✓	✓	✓	✓
	H115 S	✓	✓	✓	✓	✓	✓
	H120 GC	✓	✓		✓	✓	
	H120 GC Side Mount		✓	✓	✓	✓	✓
	H120 S	✓	✓	✓	✓	✓	✓
Demolition and Sorting Grapples	G313 GC	✓	✓	✓	✓	✓	✓
	G314	✓	✓	✓	✓	✓	✓
	G317 GC	✓	✓	✓	✓	✓	✓
	G318		✓		✓	✓	
	G318 WH-800		✓		✓	✓	
	G318 WH-1100				✓		
Mobile Scrap and Demolition Shears	S3015 Flat Top	✓	✓	✓	✓	✓	✓
Pulverizers	P214 Secondary Pulverizer	✓	✓	✓	✓	✓	✓
	P218 Secondary Pulverizer				✓		
	P318 Primary Pulverizer				✓		
Compactors (Vibratory Plate)	CVP75	✓	✓	✓	✓	✓	✓
Orange Peel Grapples	GSH420-500	●	●	●	●	●	●
	GSH420-600	●	●	●	●	●	●
	GSH420-750	●	●	○	●	●	○
	GSH520-500	●	●	●	●	●	●
	GSH520-600	●	●	○	●	●	○
	GSH520-750	●	●		●	●	○
	GSV520 GC-400	●	●	●	●	●	●
	GSV520 GC-500	●	●	●	●	●	●
	GSV520 GC-600	●	●	●	●	●	●
	GSV520 GC-750	●	●	○	●	●	○
	GSV520 GC-1250	◇	◇	◇	◇	◇	◇
	GSV520-400	●	●	●	●	●	●
	GSV520-500	●	●	●	●	●	●
	GSV520-600	●	●	○	●	●	●
	GSV520-750	●	●	○	●	●	○
	GSV520-1250	◇	◇	◇	◇	◇	◇
	GSV420-400	●	●	●	●	●	●
	GSV420-500	●	●	●	●	●	●
	GSV420-600	●	●	●	●	●	●
	GSV420-750	●	●	○	●	●	○
GSV420-1250	◇	◇	◇	◇	◇	◇	
Clamshell Grapples	CTV15-1000	●	○		●	○	
	CTV15-1200	○			○	○	

(continued on next page)

# M318 Wheeled Excavator Specifications

## Attachments Offering Guide – Africa-Middle East (continued)

Not all Attachments are available in all regions. Consult your Cat dealer for configurations available in your region.

Match  No Match

### CAT PIN GRABBER COUPLER ATTACHMENTS

Undercarriage		Front Blade; Rear Outriggers					
Counterweight		4200 kg (9,260 lb)					
Boom Type		Variable Adjustable			1 Piece		
Stick Length		2.20 m (7'3")	2.50 m (8'2")	2.90 m (9'6")	2.20 m (7'3")	2.50 m (8'2")	2.90 m (9'6")
Hydraulic Hammers	H110 S	✓	✓	✓	✓	✓	✓
	H115 GC	✓	✓	✓	✓	✓	✓
	H115 GC S	✓	✓	✓	✓	✓	✓
	H115 S	✓	✓	✓	✓	✓	✓
	H120 GC Side Mount		✓		✓	✓	
	H120 S	✓	✓	✓	✓	✓	✓
Demolition and Sorting Grapples	G313 GC	✓	✓	✓	✓	✓	✓
	G314	✓	✓	✓	✓	✓	✓
	G317 GC				✓	✓	
	G318 WH-800				✓		
Mobile Scrap and Demolition Shears	S3015 Flat Top	✓	✓	✓	✓	✓	✓
Pulverizers	P214 Secondary Pulverizer	✓	✓		✓	✓	
Compactors (Vibratory Plate)	CVP75	✓	✓	✓	✓	✓	✓

### CAT PIN GRABBER COUPLER ATTACHMENTS (continued)

Undercarriage		Front Outriggers; Rear Blade					
Counterweight		4200 kg (9,260 lb)					
Boom Type		Variable Adjustable			1 Piece		
Stick Length		2.20 m (7'3")	2.50 m (8'2")	2.90 m (9'6")	2.20 m (7'3")	2.50 m (8'2")	2.90 m (9'6")
Hydraulic Hammers	H110 S	✓	✓	✓	✓	✓	✓
	H115 GC	✓	✓	✓	✓	✓	✓
	H115 GC S	✓	✓	✓	✓	✓	✓
	H115 S	✓	✓	✓	✓	✓	✓
	H120 GC Side Mount		✓		✓	✓	
	H120 S	✓	✓	✓	✓	✓	✓
Demolition and Sorting Grapples	G313 GC	✓	✓	✓	✓	✓	✓
	G314	✓	✓	✓	✓	✓	✓
	G317 GC				✓	✓	
	G318 WH-800				✓		
Mobile Scrap and Demolition Shears	S3015 Flat Top	✓	✓	✓	✓	✓	✓
Pulverizers	P214 Secondary Pulverizer	✓	✓		✓	✓	
Compactors (Vibratory Plate)	CVP75	✓	✓	✓	✓	✓	✓

(continued on next page)

# M318 Wheeled Excavator Specifications

## Attachments Offering Guide – Africa-Middle East (continued)

Not all Attachments are available in all regions. Consult your Cat dealer for configurations available in your region.

Match

No Match

### CAT PIN GRABBER COUPLER ATTACHMENTS (continued)

Undercarriage		Front and Rear Outriggers					
Counterweight		4200 kg (9,260 lb)					
Boom Type		Variable Adjustable			1 Piece		
Stick Length		2.20 m (7'3")	2.50 m (8'2")	2.90 m (9'6")	2.20 m (7'3")	2.50 m (8'2")	2.90 m (9'6")
Hydraulic Hammers	H110 S	✓	✓	✓	✓	✓	✓
	H115 GC	✓	✓	✓	✓	✓	✓
	H115 GC S	✓	✓	✓	✓	✓	✓
	H115 S	✓	✓	✓	✓	✓	✓
	H120 GC Side Mount		✓		✓	✓	
	H120 S	✓	✓	✓	✓	✓	✓
Demolition and Sorting Grapples	G313 GC	✓	✓	✓	✓	✓	✓
	G314	✓	✓	✓	✓	✓	✓
	G317 GC				✓	✓	
	G318 WH-800				✓		
Mobile Scrap and Demolition Shears	S3015 Flat Top	✓	✓	✓	✓	✓	✓
Pulverizers	P214 Secondary Pulverizer	✓	✓		✓	✓	
Compactors (Vibratory Plate)	CVP75	✓	✓	✓	✓	✓	✓

### CW-30s DEDICATED COUPLER ATTACHMENTS

Undercarriage		Front Blade; Rear Outriggers					
Counterweight		4200 kg (9,260 lb)					
Boom Type		Variable Adjustable			1 Piece		
Stick Length		2.20 m (7'3")	2.50 m (8'2")	2.90 m (9'6")	2.20 m (7'3")	2.50 m (8'2")	2.90 m (9'6")
Hydraulic Hammers	H110 S	✓	✓	✓	✓	✓	✓
	H115 GC	✓	✓	✓	✓	✓	✓
	H115 GC S	✓	✓	✓	✓	✓	✓
	H115 S	✓	✓	✓	✓	✓	✓
	H120 GC				✓		
	H120 S		✓	✓	✓	✓	✓
Demolition and Sorting Grapples	G313 GC	✓	✓	✓	✓	✓	✓
	G314	✓	✓	✓	✓	✓	✓
	G317 GC	✓	✓		✓	✓	
	G318				✓		
	G318 WH-800		✓		✓	✓	
Mobile Scrap and Demolition Shears	S3015 Flat Top	✓	✓	✓	✓	✓	✓
Pulverizers	P214 Secondary Pulverizer	✓	✓	✓	✓	✓	✓
Compactors (Vibratory Plate)	CVP75	✓	✓	✓	✓	✓	✓

(continued on next page)

# M318 Wheeled Excavator Specifications

## Attachments Offering Guide – Africa-Middle East (continued)

Not all Attachments are available in all regions. Consult your Cat dealer for configurations available in your region.

Match  No Match

### CW-30s DEDICATED COUPLER ATTACHMENTS (continued)

Undercarriage		Front Outriggers; Rear Blade					
Counterweight		4200 kg (9,260 lb)					
Boom Type		Variable Adjustable			1 Piece		
Stick Length		2.20 m (7'3")	2.50 m (8'2")	2.90 m (9'6")	2.20 m (7'3")	2.50 m (8'2")	2.90 m (9'6")
Hydraulic Hammers	H110 S	✓	✓	✓	✓	✓	✓
	H115 GC	✓	✓	✓	✓	✓	✓
	H115 GC S	✓	✓	✓	✓	✓	✓
	H115 S	✓	✓	✓	✓	✓	✓
	H120 GC				✓		
	H120 S		✓	✓	✓	✓	✓
Demolition and Sorting Grapples	G313 GC	✓	✓	✓	✓	✓	✓
	G314	✓	✓	✓	✓	✓	✓
	G317 GC	✓	✓		✓	✓	
	G318				✓		
	G318 WH-800		✓		✓	✓	
Mobile Scrap and Demolition Shears	S3015 Flat Top	✓	✓	✓	✓	✓	✓
Pulverizers	P214 Secondary Pulverizer	✓	✓	✓	✓	✓	✓
Compactors (Vibratory Plate)	CVP75	✓	✓	✓	✓	✓	✓

### CW-30s DEDICATED COUPLER ATTACHMENTS (continued)

Undercarriage		Front and Rear Outriggers					
Counterweight		4200 kg (9,260 lb)					
Boom Type		Variable Adjustable			1 Piece		
Stick Length		2.20 m (7'3")	2.50 m (8'2")	2.90 m (9'6")	2.20 m (7'3")	2.50 m (8'2")	2.90 m (9'6")
Hydraulic Hammers	H110 S	✓	✓	✓	✓	✓	✓
	H115 GC	✓	✓	✓	✓	✓	✓
	H115 GC S	✓	✓	✓	✓	✓	✓
	H115 S	✓	✓	✓	✓	✓	✓
	H120 GC				✓		
	H120 S		✓	✓	✓	✓	✓
Demolition and Sorting Grapples	G313 GC	✓	✓	✓	✓	✓	✓
	G314	✓	✓	✓	✓	✓	✓
	G317 GC	✓	✓		✓	✓	
	G318				✓		
	G318 WH-800		✓		✓	✓	
Mobile Scrap and Demolition Shears	S3015 Flat Top	✓	✓	✓	✓	✓	✓
Pulverizers	P214 Secondary Pulverizer	✓	✓	✓	✓	✓	✓
Compactors (Vibratory Plate)	CVP75	✓	✓	✓	✓	✓	✓

(continued on next page)

# M318 Wheeled Excavator Specifications

## Attachments Offering Guide – Africa-Middle East (continued)

Not all Attachments are available in all regions. Consult your Cat dealer for configurations available in your region.

Match

No Match

### CW-30 DEDICATED COUPLER ATTACHMENTS

Undercarriage		Front Blade; Rear Outriggers					
Counterweight		4200 kg (9,260 lb)					
Boom Type		Variable Adjustable			1 Piece		
Stick Length		2.20 m (7'3")	2.50 m (8'2")	2.90 m (9'6")	2.20 m (7'3")	2.50 m (8'2")	2.90 m (9'6")
Hydraulic Hammers	H110 S	✓	✓	✓	✓	✓	✓
	H115 GC	✓	✓	✓	✓	✓	✓
	H115 GC S	✓	✓	✓	✓	✓	✓
	H115 S	✓	✓	✓	✓	✓	✓
	H120 GC				✓		
	H120 S	✓	✓	✓	✓	✓	✓
Demolition and Sorting Grapples	G313 GC	✓	✓	✓	✓	✓	✓
	G313 GC Fixed CAN	✓	✓	✓	✓	✓	✓
	G314	✓	✓	✓	✓	✓	✓
	G317 GC	✓	✓		✓	✓	
	G317 GC Fixed CAN		✓		✓	✓	✓
	G318				✓		
	G318 Fixed CAN				✓	✓	
	G318 WH-800	✓	✓		✓	✓	
Mobile Scrap and Demolition Shears	S3015 Flat Top	✓	✓	✓	✓	✓	✓
Pulverizers	P214 Secondary Pulverizer	✓	✓	✓	✓	✓	✓
Compactors (Vibratory Plate)	CVP75	✓	✓	✓	✓	✓	✓

### CW-30 DEDICATED COUPLER ATTACHMENTS (continued)

Undercarriage		Front Outriggers; Rear Blade					
Counterweight		4200 kg (9,260 lb)					
Boom Type		Variable Adjustable			1 Piece		
Stick Length		2.20 m (7'3")	2.50 m (8'2")	2.90 m (9'6")	2.20 m (7'3")	2.50 m (8'2")	2.90 m (9'6")
Hydraulic Hammers	H110 S	✓	✓	✓	✓	✓	✓
	H115 GC	✓	✓	✓	✓	✓	✓
	H115 GC S	✓	✓	✓	✓	✓	✓
	H115 S	✓	✓	✓	✓	✓	✓
	H120 GC				✓		
	H120 S	✓	✓	✓	✓	✓	✓
Demolition and Sorting Grapples	G313 GC	✓	✓	✓	✓	✓	✓
	G313 GC Fixed CAN	✓	✓	✓	✓	✓	✓
	G314	✓	✓	✓	✓	✓	✓
	G317 GC	✓	✓		✓	✓	
	G317 GC Fixed CAN		✓		✓	✓	✓
	G318				✓		
	G318 Fixed CAN				✓	✓	
	G318 WH-800	✓	✓		✓	✓	
Mobile Scrap and Demolition Shears	S3015 Flat Top	✓	✓	✓	✓	✓	✓
Pulverizers	P214 Secondary Pulverizer	✓	✓	✓	✓	✓	✓
Compactors (Vibratory Plate)	CVP75	✓	✓	✓	✓	✓	✓

(continued on next page)

# M318 Wheeled Excavator Specifications

## Attachments Offering Guide – Africa-Middle East (continued)

Not all Attachments are available in all regions. Consult your Cat dealer for configurations available in your region.

Match

No Match

### CW-30 DEDICATED COUPLER ATTACHMENTS (continued)

Undercarriage		Front and Rear Outriggers					
Counterweight		4200 kg (9,260 lb)					
Boom Type		Variable Adjustable			1 Piece		
Stick Length		2.20 m (7'3")	2.50 m (8'2")	2.90 m (9'6")	2.20 m (7'3")	2.50 m (8'2")	2.90 m (9'6")
Hydraulic Hammers	H110 S	✓	✓	✓	✓	✓	✓
	H115 GC	✓	✓	✓	✓	✓	✓
	H115 GC S	✓	✓	✓	✓	✓	✓
	H115 S	✓	✓	✓	✓	✓	✓
	H120 GC				✓		
	H120 S	✓	✓	✓	✓	✓	✓
Demolition and Sorting Grapples	G313 GC	✓	✓	✓	✓	✓	✓
	G313 GC Fixed CAN	✓	✓	✓	✓	✓	✓
	G314	✓	✓	✓	✓	✓	✓
	G317 GC	✓	✓		✓	✓	
	G317 GC Fixed CAN		✓		✓	✓	✓
	G318				✓		
	G318 Fixed CAN				✓	✓	
	G318 WH-800	✓	✓		✓	✓	
Mobile Scrap and Demolition Shears	S3015 Flat Top	✓	✓	✓	✓	✓	✓
Pulverizers	P214 Secondary Pulverizer	✓	✓	✓	✓	✓	✓
Compactors (Vibratory Plate)	CVP75	✓	✓	✓	✓	✓	✓

(continued on next page)

# M318 Attachments

## Dealer Installed Kits and Attachments

Attachments may vary. Consult your Cat dealer for details.

---

### CAB

- 75 mm (3") retractable seat belt

### SAFETY AND SECURITY

- Bluetooth® key fob

### GUARDS

- OPG (not compatible with cab light cover, rain protector)
- Mesh guard full front (not compatible with cab light cover, rain protector)



## Cab Options

	Deluxe*	Premium**
Cab structure meeting ISO 12117-2 ROPS standard	●	●
Heated seat with adjustable air suspension	●	X
Heated and cooled seat with semi-automatic adjustable air suspension	X	●
Height-adjustable console, infinite with no tool	●	●
High-resolution 254 mm (10") LCD touch screen monitor	●	●
Mechanical mirror	●	X
Electrical mirror	X	●
Automatic bi-level air conditioner	●	●
Jog dial and shortcut keys for monitor control	●	●
Keyless push-to-start engine control	●	●
51 mm (2") orange seat belt	●	●
Unfastened seat belt warning	●	●
Bluetooth integrated radio (including USB, auxiliary port and microphone)	●	●
2 × 12V DC outlets	●	●
Document storage	●	●
Auxiliary relay	○	○
Cup and bottle holders	●	●
Openable two-piece front window (laminated)	●	○
Fixed one-piece front window (P5A classified)	X	○
Parallel wiper with washer	●	●
Fixed glass skylight hatch	●	●
LED dome lights	●	●
Foot illumination	●	●
Roller rear sunscreen	X	●
Rear window emergency exit	●	●
Washable floor mat	●	●
Beacon ready	●	●
OPG "ready"	●	●
Vandal guards "ready"	●	●
Two LED cab lights	●	●
Rain visor	●	●

● Standard

○ Optional

X Not available

\*Available in Africa, Middle East only

\*\*Available in North America only

# M318 Standard and Optional Equipment

## Standard and Optional Equipment

Standard and optional equipment may vary. Consult your Cat dealer for details.

	Standard	Optional		Standard	Optional
<b>ENGINE</b>			<b>UNDERCARRIAGE AND STRUCTURES</b>		
Cat C4.4 diesel engine (Tier 3/Stage IIIA equivalent emissions)	✓		All wheel drive	✓	
Power mode selector	✓		Automatic brake/axle lock	✓	
One-touch low idle with automatic engine speed control	✓		Creep speed	✓	
Automatic engine idle shutdown	✓		Electronic swing and travel lock	✓	
Work up to 3000 m (9,842 ft) above sea level without engine power de-rating	✓		Heavy-duty axles, advanced disc brake system and travel motor, adjustable braking force	✓	
52°C (125°F) high-ambient cooling capacity	✓		Oscillating front axle, lockable, with remote greasing point	✓	
Cold starting capability for -18°C (0°F)	✓		10.00-20 16 PR, dual tires	✓ <sup>(2)</sup>	
Double element air filter	✓		11.00-20, dual tires	✓ <sup>(1)</sup>	
Electric fuel priming pump	✓		Steps with tool box in undercarriage (left and right)	✓	
On-demand electric cooling fans with auto-reverse function	✓		Two-piece drive shaft	✓	
<b>HYDRAULIC SYSTEM</b>			Two speed hydrostatic transmission	✓	
Boom, stick and bucket drift reduction valves	✓		Rear blade (parallel)/front outrigger undercarriage		✓ <sup>(2)</sup>
Boom/stick lowering check valves		✓	Rear outrigger/front blade (parallel) undercarriage	✓ <sup>(3)</sup>	
Overload warning	✓		Rear outrigger/front outrigger undercarriage		✓ <sup>(2)</sup>
Electronic main control valve	✓		4200 kg (9,260 lb) counterweight		✓
Automatic hydraulic oil warm up	✓		<b>BOOM, STICKS AND LINKAGES</b>		
Element type main hydraulic filter	✓		5205 mm (17'1") Variable Adjustable boom	✓ <sup>(1)</sup>	
One-slider joysticks		✓	5100 mm (16'9") One-piece boom	✓ <sup>(2)</sup>	
Two-slider joysticks		✓	2500 mm (8'2") stick		✓ <sup>(2)</sup>
Advanced Tool Control (one/two way high-pressure flow)		✓	2900 mm (9'6") stick	✓ <sup>(3)</sup>	
Second high pressure auxiliary circuit (one/two way high-pressure flow)		✓	Bucket linkage, 316-family with lifting eye		✓
Medium pressure auxiliary circuit (one/two way medium-pressure flow)		✓	Bucket linkage, 316-family without lifting eye		✓
Heavy lift mode	✓		<sup>(1)</sup> North America only. <sup>(2)</sup> Africa, Middle East only. <sup>(3)</sup> Optional in Africa, Middle East.		
Quick coupler circuit for Cat Pin Grabber and CW-type coupler		✓	<i>(continued on next page)</i>		
Separate dedicated swing pump	✓				
Automatic swing brake	✓				
Cat BIO HYDO™ Advanced biodegradable hydraulic oil		✓			
Adjustable hydraulic aggressiveness	✓				
Pattern changer	✓				

# M318 Standard and Optional Equipment

## Standard and Optional Equipment *(continued)*

Standard and optional equipment may vary. Consult your Cat dealer for details.

	Standard	Optional		Standard	Optional
<b>ELECTRICAL SYSTEM</b>			<b>SAFETY AND SECURITY</b>		
LED lights on boom and cab	✓		Rear and right-side-view cameras	✓	
LED lights on chassis (left-hand, right-hand) and counterweight	✓		Right-side electrical mirror for VA boom	✓ <sup>(1)</sup>	
Programmable time-delay LED working lights	✓		Travel alarm	✓	
Roading and indicator lights, front and rear	✓		Signal/warning horn	✓	
Maintenance free batteries	✓		Rotating beacon on cab	✓ <sup>(3)</sup>	
Centralized electrical disconnect switch	✓		Neutral lever (lock out) for all controls	✓	
Refueling pump		✓ <sup>(2)</sup>	Ground-level accessible secondary engine shutoff switch in cab	✓	
<b>TECHNOLOGY</b>			Lockable disconnect switch	✓	
VisionLink®	✓*		Bluetooth receiver	✓	
VisionLink Productivity		✓	Anti-skid plate and countersunk bolts on service platform	✓	
Remote Flash	✓		2D E-Fence		✓
Remote Troubleshoot	✓				
Cat Grade 2D		✓			
Cat Assist: – Grade Assist		✓			
Cat Payload: – Static weigh – Semiautomatic calibration – Payload/cycle information – USB reporting capability		✓			
<b>SERVICE AND MAINTENANCE</b>					
Scheduled Oil Sampling (S·O·S <sup>SM</sup> ) ports	✓				
Integrated vehicle health management system	✓				

<sup>(1)</sup>North America only.

<sup>(3)</sup>Optional in Africa, Middle East.

<sup>(2)</sup>Africa, Middle East only.

\*Connect subscription only. Additional subscriptions are available. Contact your Cat dealer for availability.

For more complete information on Cat products, dealer services, and industry solutions, visit us on the web at [www.cat.com](http://www.cat.com)

© 2023 Caterpillar  
All rights reserved

Materials and specifications are subject to change without notice. Featured machines in photos may include additional equipment. See your Cat dealer for available options.

CAT, CATERPILLAR, LET'S DO THE WORK, their respective logos, "Caterpillar Corporate Yellow," the "Power Edge" and Cat "Modern Hex" trade dress as well as corporate and product identity used herein, are trademarks of Caterpillar and may not be used without permission. VisionLink is a trademark of Caterpillar Inc., registered in the United States and in other countries.

AEXQ3469-02 (12-2023)  
Replaces AEXQ3469-01  
Build Number: 07D  
(N Am, Afr-ME)

