

**REDUCED EMISSIONS.
BETTER COMPLIANCE.**



Image shown may not reflect actual configuration

**CPCB IV+ COMPLIANT
CAT® DIESEL GENERATOR**



Caterpillar Inc. is the world's leading manufacturer of construction and mining equipment, off-highway diesel and natural gas engines, industrial gas turbines and diesel-electric locomotives. For nearly 100 years, we've been helping customers build a better, more sustainable world and are committed and contributing to a reduced-carbon future. Our innovative products and services, backed by our global dealer network, provide exceptional value that helps customers succeed.

In India, Caterpillar has been manufacturing diesel engines and generator sets from its world-class facility located in

Hosur, Tamil Nadu. These products are built to the highest Quality and Safety standards that are consistent across all Caterpillar worldwide manufacturing facilities.

The new Cat diesel generator set is designed to comply with the CPCB IV+ emission norms for India market.

Every Cat generator set is built, inspected and tested to Caterpillar's stringent quality, reliability and durability standards to provide reliable power when needed. These products are robust in construction and ensure proven performance.

AREAS OF APPLICATION

- » BANKING & FINANCE
- » HOSPITALITY
- » REALTY
- » CONSTRUCTION
- » INFRASTRUCTURE
- » RECREATION
- » DATA CENTER
- » MANUFACTURING
- » RETAIL
- » DEFENCE
- » MINING
- » TELECOMMUNICATION
- » HEALTHCARE
- » NUCLEAR
- » UTILITIES

and many more critical applications, wherever and whenever you need backup power.



PROVEN
PERFORMANCE



RELIABLE
POWER



TECHNOLOGY
DRIVEN



FLEXIBLE
CONFIGURATION



WORLD CLASS
PRODUCT SUPPORT

CAT[®] CPCB IV+ MODELS

Engine	Model	Frequency	Rating
C18	DE500	50Hz	500kVA
C18	DE630	50Hz	630kVA

POWERING YOUR PRODUCTIVITY

CAT® DIESEL GENERATOR SETS

CPCB IV+ COMPLIANT



GENSET SPECIFICATION



GENSET
MODEL
Cat® DE500
Cat® DE630



GENSET RATING
500 kVA / 400 ekW
630 kVA / 504 ekW
@1500 RPM, 415 V / 50 Hz



EMISSION
STRATEGY
Meets India
CPCB IV+ standard



CONTROLLER
GCCP1.3



TELEMATICS
Factory fitted Product
Link™ PL444



FUEL TANK
Integrated
base mounted

CAT[®] DIESEL GENSET

CPCB IV+ COMPLIANT



ENGINE SPECIFICATION

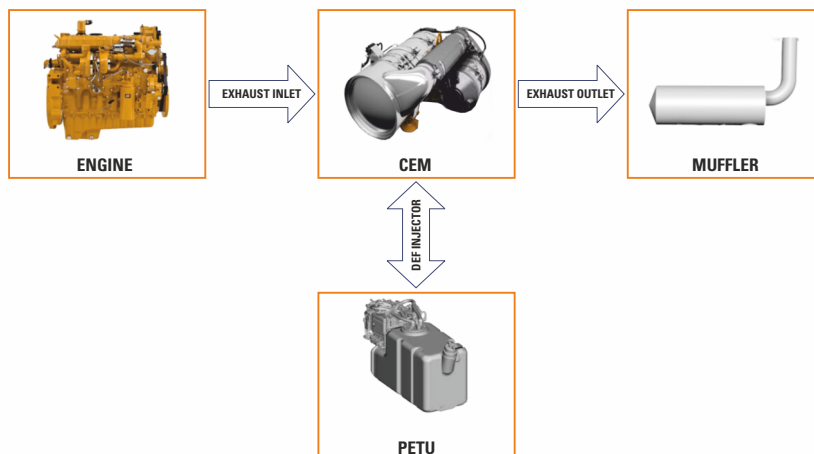
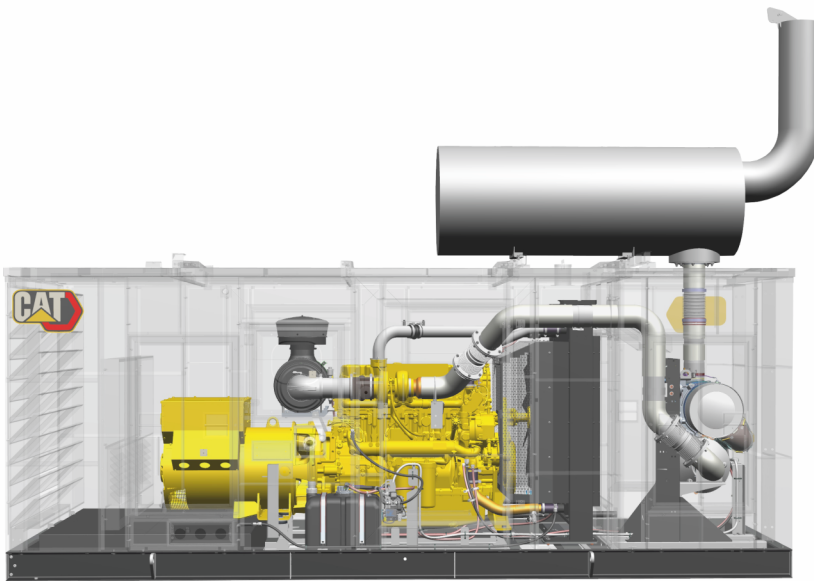
Engine Model:	Cat [®] C18
Engine Design:	In-line 6 Cylinder, 4-Stroke Diesel
Bore x Stroke:	145 mm x 183 mm
Displacement:	18.1 L
Compression Ratio:	16:1
Aspiration:	Air-to-Air Aftercooled
Fuel Injection System:	MEUI
Governor:	Electronic ADEM [™] A6
Aftertreatment:	Remote mounted, located inside the enclosure



ALTERNATOR SPECIFICATION

Alternator Design:	Brushless Single Bearing, 4 Pole
Stator:	2 / 3 rd Pitch
Insulation:	Class H
Temperature Rise:	125°C
Protection Standard:	IP23
Voltage Regulation:	Steady State $\pm 1\%$

AFTERTREATMENT SYSTEM FOR CAT® CPCB IV+ GENSETS



INTRODUCTION

The primary function of the aftertreatment system is to clean exhaust gases and ensure the engines meet the appropriate emission regulations. Through this process, Nitrogen Oxide (NO_x) reacts with Diesel Exhaust Fluid (DEF) across catalysts within the Clean Emission Module (CEM) and gets converted into nitrogen and water before releasing to atmosphere.

The two main components of the aftertreatment system are the CEM and dosing cabinet or Pump Electronic Tank Unit (PETU). The PETU contains a controller, DEF tank and pump. CEM is designed to remove harmful oxides of particles by using a systemic process. DEF is used in the aftertreatment system to reduce Nitrogen Oxide levels.

Abbreviations

CEM	Clean Emissions Module	SCR	Selective Catalytic Reduction
DEF	Diesel Exhaust Fluid	NO _x	Nitrogen Oxides
DOC	Diesel Oxidation Catalyst	NH ₃	Ammonia
ECU	Electronic Control Unit	H ₂ O	Water
PETU	Pump Electronic Tank Unit		

WORLD CLASS PRODUCT SUPPORT



Service Agreements. Cat® CVA



Electric Power Remote Asset Monitoring



Service and Repair Options



Warranty



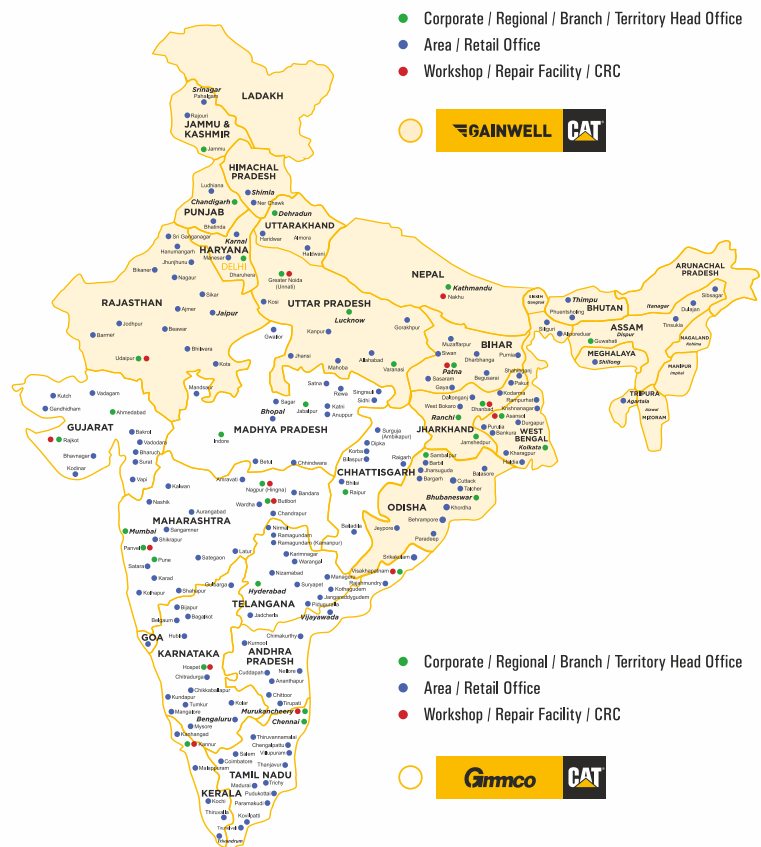
Genuine Parts



Extended Protection

Caterpillar has a well-established dealer network across India. Cat dealers offer a one-stop distribution and services network to meet our customer needs, providing 24x7 product support, operation and maintenance and a broad array of other services to ensure that our customers and their businesses keep running smoothly.

This map illustrates Caterpillar's dealer and service network only and does not purport to be a cartographically accurate representation. Product images are for illustrative purposes only and may not depict the actual products.



FOR SOUTHERN AND WESTERN REGIONS

Gmmco Limited

Toll-Free No: **1800 425 2546**

E-mail: sales@gmmcoindia.com

www.gmmco.in

FOR NORTHERN AND EASTERN REGIONS

Gainwell Commosales Pvt. Ltd.

Toll-Free No: **1800 345 3355 | 1800 419 3356**

E-mail: marketing@gainwellindia.com

www.gainwellindia.com



LEBE22135-02 (07/24)

© 2024 Caterpillar. All Rights Reserved. CAT, CATERPILLAR, LET'S DO THE WORK, their respective logos, "Caterpillar Corporate Yellow", the "Power Edge" and Cat "Modern Hex" trade dress as well as corporate and product identity used herein, are trademarks of Caterpillar and may not be used without permission.