

# AFRICA, MIDDLE EAST & EURASIA BUYER GUIDE 2024.

CONSTRUCTION INDUSTRIES  
AFRICA & MIDDLE EAST

Discover our Cat® and SEM products.



**CATERPILLAR®**

© 2023 Caterpillar. All Rights Reserved. CAT, CATERPILLAR, LET'S DO THE WORK, their respective logos, "Caterpillar Corporate Yellow", the "Power Edge" and Cat "Modern Hex" trade dress as well as corporate and product identity used herein, are trademarks of Caterpillar and may not be used without permission.

# VISIONLINK<sup>®</sup>

## THE POWER OF KNOWING



DISCOVER THE UNTAPPED PROFIT AND PERFORMANCE  
OF ANY ASSET WITH NEW VISIONLINK.<sup>®</sup>



Speak to your local Cat dealer  
or visit [cat.com/visionlink](https://cat.com/visionlink) today.





**W**elcome to the Construction Industries 2024 Buyer's Guide showcasing the impressive lineup of Cat construction products designed for Africa, Middle East, and Eurasia.

Images of our products at work and brief specifications for many new models are included along with the current machines in each product family.

This free Buyers' Guide is provided compliments of your dealership. Please

keep it handy for your reference throughout the year and be sure to contact us with any questions or if you would like more details about any of the machines you see here.

To learn more about fuel-efficient, quality-built Cat and SEM machines that use the latest technology as well as to inquire information about the availability of machines in the specific region, please contact your local dealer or **visit [cat.com](http://cat.com) and [semmachinery.com](http://semmachinery.com).**

- 04** MICRO AND MINI HYDRAULIC EXCAVATORS
- 06** SMALL HYDRAULIC EXCAVATORS
- 07** MEDIUM HYDRAULIC EXCAVATORS
- 09** LARGE HYDRAULIC EXCAVATORS
- 10** WHEELED HYDRAULIC EXCAVATORS
- 11** MEDIUM DOZERS
- 12** LARGE DOZERS
- 13** TRACK TYPE LOADERS
- 15** SKID STEER LOADERS AND COMPACT TRACK LOADERS
- 16** COMPACT WHEEL LOADERS
- 17** SMALL WHEEL LOADERS
- 18** MEDIUM WHEEL LOADERS

- 19** LARGE WHEEL LOADERS
- 21** BACKHOE LOADERS
- 22** MOTOR GRADERS
- 23** WHEEL TRACTOR SCRAPERS
- 25** SOIL COMPACTORS
- 26** ASPHALT PAVERS / ASPHALT COMPACTION SOLUTIONS
- 27** COLD PLANERS / ROAD RECLAIMERS
- 29** OFF-HIGHWAY TRUCKS
- 31** ARTICULATED TRUCKS
- 33** WHEELED MATERIAL HANDLER
- 34** ULTRA HIGH DEMOLITION EXCAVATORS
- 35** ATTACHMENTS
- 36** SEM

This magazine is published by Caterpillar AME and High Velocity Communications Inc. on behalf of your Cat dealer. Cat Managing Editors, Camille Selles • Publisher, Tim O'Brien • Editor, John Rony • Art Director, Eric Valk • Director of Client Services, Kelly Pemper. Every attempt has been made to ensure specifications are correct. Because specifications are subject to change without notice, check with us, your Cat dealer, for the latest information and available options. Some photography provided courtesy of Caterpillar Inc. Machines shown may include additional equipment. 2023 Caterpillar. All Rights Reserved. CAT, CATERPILLAR, LET'S DO THE WORK, their respective logos, "Caterpillar Yellow", the "Power Edge" and Cat "Modern Hex" trade dress as well as corporate and product identity used herein, are trademarks of Caterpillar and may not be used without permission. VisionLink® is a trademark of Trimble Navigation Limited, registered in the United States and in other countries.

Machine specifications are subject to change without notice. For additional information please contact your dealership or visit [cat.com](http://cat.com)



301.5

# MICRO AND MINI HYDRAULIC EXCAVATORS

**MICRO:** 300.9 D, 301.5, 301.6, 301.7 CR, 301.8, 302 CR, 302.7 CR

**MINI:** 303 CR, 303.5 CR, 305 CR, 306.5, 307.5, 310

- + Expandable width undercarriage models balance the stability of a wide undercarriage with the ability to access tight spaces of a narrower machine.
- + The hinged blade extensions remain attached to the blade so that they're never misplaced when the blade is set to match the retracted undercarriage.
- + With their reduced or zero tailswing, Compact Radius (CR) models make it easier to avoid damage to the machine and its surroundings when working in confined spaces.
- + Two-point machine lifting provides fast and safe handling on the Next Generation 301.5, 301.6, 301.7 CR, 301.8 and 302 CR.
- + Upon opening your workspace, the lower portion of the front screen can slide up into the front window assembly and be stored securely overhead, what allows you to get a wide front opening directly.
- + The float position on the dozer blade makes ground levelling and clean up easy.
- + Excellent ground level service access simplifies machine maintenance and daily checks.
- + For the models from 301.5 up to 303.5 CR, the tilt up cab/ canopy offers unparalleled access to previously hard reachable components what simplifies the difficult service jobs.



303.5 CR



305

- + We are the first in the industry to offer air conditioning on all of our cab models all the way down to our 301.6, bringing a level of comfort never seen before in this size class.
- + All Cat Next Generation mini excavators (the 300.9D is excluded) are equipped with stick steer, allowing the operator to switch from the traditional travel pedals and levers to joystick control for tracking, improving body position and comfort. RH joystick also allow to control the blade or the implements for higher versatility when you are in stick steer.
- + Our smart hydraulic pumps and control valves give us total control to maximise fuel efficiency and productivity.
- + Our in-cab display provides the operator with all they need to control the machine and reduces in cab clutter, with integrated air conditioning control, radio, security system and Bluetooth connectivity.
- + Our machine can be tailored to the application or operator, with implement speed and sensitivity settings for every function accessible through the in-cab display.
- + It's easier than ever to change your attachment, with quick coupler control, auxiliary circuit hydraulic flow adjustment and worktool presets all available through the in-cab display.
- + Service interval reminders are managed through the in-cab display to take the stress out of scheduled services.



# SMALL HYDRAULIC EXCAVATORS

## 313 GC, 316GC

- + Net power – 70.6 to **77.3 kW**.
- + Operating weights 12,400 kg to **15,000 kg**.
- + Powered by fuel-efficient engines and advanced hydraulic systems.
- + Cat Connect Technology and a full range of Cat attachments help you complete the work easier and faster.
- + Low-effort joystick controls, ergonomically designed cab with easy-to-reach controls and good visibility to reduce operator fatigue.



## 313 GC





# MEDIUM HYDRAULIC EXCAVATORS

**PERFORMANCE LINEUP:** 320, 323, 326, 330, 333

**GC LINEUP:** 320 GC, 323 GC, 330 GC

**GX LINEUP:** 320 GX, 323 GX

- + Performance Lineup - Engine Power – ISO 14396: 118 kW to 195 kW.
- + GC Lineup - Engine Power – ISO 14396: 108 kW to 159 kW.
- + GX Lineup – Engine Power – ISO 14396: 108 kW to 129 kW.
- + Operating Weight: 19700 kg to 33500 kg.
- + Built on the Next Generation Platform with new design and lower owning and operating costs.
- + Reduced maintenance costs and great improvement in fuel efficiency.
- + More choices to fit the right excavator to the right application without any compromise on durability.
- + Integrated technologies with Ease-of-Use Functions: Cat GRADE 2D with Assist Function, E-fence and Payload system. Available on Performance Lineup.
- + New cab design with all-round visibility for safer working environment.
- + Standard features from factory: SMART and POWER engine modes, highly efficient hydraulic system, Cat Link technology, improved filters with longer service intervals.
- + Multiple configurations available in Mass, Reach, Super Long Reach front linkage.



# DISCOVER THE POWER OF EFFICIENCY



## CAT® 395 HYDRAULIC EXCAVATOR

POWERS THROUGH DEMANDING WORK

## CAT® 374 HYDRAULIC EXCAVATOR

SETS THE STANDARD

[www.cat.com](http://www.cat.com)

© 2023 Caterpillar. All Rights Reserved. CAT, CATERPILLAR, LET'S DO THE WORK, their respective logos, "Caterpillar Corporate Yellow", the "Power Edge" and Cat "Modern Hex" trade dress as well as corporate and product identity used herein, are trademarks of Caterpillar and may not be used without permission.

**CAT**®



# LARGE HYDRAULIC EXCAVATORS

**PERFORMANCE LINEUP:** 336, 340, 350, 352, 374, 395

**GC LINEUP:** 345 GC

- + Performance Lineup – Engine Power – ISO 14396: 234 kW to 405 kW.
- + GC Lineup – Engine Power – ISO 14396: 195 kW to 259 kW.
- + Operating Weight: 34900 kg to 94100 kg.
- + Built on the Next Generation Platform with new design and lower owning and operating costs.
- + Standard integrated technologies with Ease-of-Use Functions in 374 and 395. Available on demand in 350 and 352.
- + Cat® 336 configured with long wide undercarriage and mass or reach front linkage.
- + Cat® 345 GC designed for various job requirements with best low-cost per-hour performance.
- + Cat® 374 and 395 with faster cycle time, 2x times more structural durability, and lower maintenance costs.
- + Standard features from factory: SMART and POWER engine modes, rear view camera, highly efficient hydraulic system, Cat Link technology, improved filters with longer service intervals.
- + Annual Product Updates to bring new features and product improvements to customers more quickly.
- + Multiple configurations available in Mass and Reach front linkage.



# 374



# WHEELED HYDRAULIC EXCAVATORS

## M315 NGH, M317, M320

- + Net Power – 90 kW to 123.5 kW.
- + Operating Weights – 49,441 kg to 104,236 kg.
- + Dedicated swing pump enables greater productivity and lower operating costs. A dedicated variable displacement piston pump and fixed displacement piston motor power the swing drive. This closed hydraulic circuit maximizes swing performance without reducing flow and power to the other hydraulic functions, resulting in smoother combined movements and lower fuel consumption.
- + Daily maintenance can be performed from ground level quickly and efficiently while maintaining operator safety.
- + Best-in-Class filtration system that is designed for challenging work conditions, even when using lower quality fuel. Industrial grade electrical wiring (SXL type) resists dust, water and vibration to provide durability and increase uptime over the entire life of the machine.
- + Best-in-class reach and lifting capacity. Booms and sticks are engineered with strength and the capability to maximize working envelopes in order to perform a wide range of operations effectively, and thereby reduce the need for additional equipment on the jobsite.
- + The power boost feature helps customers lift heavy loads for a longer duration while maintaining the required speed, resulting in greater productivity.
- + The Integrated Tool Control system enables the operator to select up to 10 pre-set combinations or 20 tools in the case of the M315. This eliminates the need to re-set the hydraulic parameters each time a tool is changed.



# M320



# D8 GC

## MEDIUM DOZERS

**PERFORMANCE LINEUP:** D4, D5, D6R2, D7, D8

**GC LINEUP:** D6 GC, D8GC

(Emission standards – D4 Tier 3, D5 Tier 3, D6R2 Tier 3, D6 GC Tier 0, D7 Tier 3, D8 GC Tier 1, D8 Tier 3)

- + Net Power – 97 kW to 242 kW.
- + Operating Weights – 13500 kg to 39153 kg.
- + Standard blade size – 3.3 m<sup>3</sup> to 10.3 m<sup>3</sup>.
- + The D4 combines best-in-class fuel efficiency with an hydrostatic transmission giving the power and precision to excel in a wide range of jobs. This versatile bulldozer features a reliable power train and an overall design that is optimized for finishing.
- + The D5, D6R2, D7 and D8 have an electronically controlled power shift transmission, three speed forward and reverse, which endures smooth shifting and the highly maneuverable differential steering provides a single control for all directional and speed choices.
- + The D6R2 is equipped with a two-pump hydraulic system enabling simultaneous blade response and steering performance. The differential steering provides smooth turning even with a full blade load. It has fully dedicated configurations for construction, forestry, waste management or agriculture applications.
- + The D6 GC is a simple yet reliable, comfortable and economical machine for all type of operations which will excel in both earthmoving and forestry applications.
- + The D8 GC has a mechanically controlled power shift transmission, 3 speed forward and reverse. It is designed to be durable, especially in challenging conditions like extreme heat or cold, desert or rocky areas.
- + The D8 with the Cat C15 diesel engine is the most fuel efficient tractor in its class.
- + All dozers offer a choice of undercarriage, blades, rippers, winches, rear drawbar, guarding to best fit your operations.
- + All models can be equipped with Product Link™/VisionLink® technologies to maximize machine maintenance, fleet management, uptime and jobsite efficiency.
- + Cat Grade with Slope Assist is an option available on the D4, D5, and D7 to help operators more easily achieve the required main-fall and slope orientation of the blade by automatically maintaining pre-established blade angles for the grade. The system saves time, increases finish quality and reduces operator input.
- + The D4, D5, D6R2, D6 GC, D7, D8 GC and D8 are equipped with an updated cab with integrated Roll Over Protection Structure, providing the operator with greater all-round visibility to enhance safety and productivity.



# D6 GC

# LARGE DOZERS

**PERFORMANCE LINEUP:** D9, D10T2, D11

**GC LINEUP:** D9 GC

Emission standards – D9 Tier 2, D9 GC Tier 1, D10T2 Tier 2, D11 TIER 2

- + Net Forward Power – 308 kW to 634 kW
- + Operating Weights – 49988 kg to 104236 kg
- + Powerful, rugged, easy-to-service Cat® engines deliver high torque rise and meet or exceed emissions requirements.
- + Multiple undercarriage solutions enable you to minimize owning and operating costs on your jobsite. Including Heavy Duty XL with DuraLink and General Duty
- + Dependable performance and low operating costs with fuel savings of the new Stator Clutch torque convertor\*.
- + Future-ready-optimized electronic architecture enables 360° vision, high-speed data transfer and semi-autonomous operation on D11\*.
- + Comfortable, ergonomic operator stations enable high production with easy-to-reach controls, Cat Contour Series or Premium Plus seats and excellent view of work area. Push arm grab handles are standard.
- + Elevated sprockets isolate final drives from ground impacts—suspended undercarriages put more track on the ground for greater traction, less slippage, smoother ride and longer life.
- + Rugged dozer mainframes are heavy, strong and durable.
- + Major modular components deliver reliable performance in tough working conditions and are designed for convenient serviceability.

\* except D9 GC and D10T2



# D9 GC



# 953

## TRACK TYPE LOADERS

953, 963, 973K

(Emission standards – Tier 3)

- + Net power – 119 to 205 kW
- + Standard operating weights – 15958 kg to 28985 kg (up to 33699 kg in Steel Mill configuration)
- + Standard Bucket Size: 2.1m<sup>3</sup> to 3.8m<sup>3</sup>.
- + The 953 and 963 are equipped with a Cat C7.1 diesel engine, and the 973K is equipped with the Cat C9.3B diesel engine, delivering the power and reliability you need to get the job done. They provide more torque at lower engine speeds for fast machine response under load.
- + Track-Type loaders have an hydrostatic drive using variable displacement pumps and drive motors for fast acceleration and infinitely variable speed. The operator can command smooth machine turns and counter-rotation.

### Earthmoving applications:

- + Site preparation: Track Loaders will excel when multiple tasks are required on your jobsite. Acting as a complete system this unique machine will do the job with one operator. You have only one machine to transport, fuel and maintain for land clearing, ripping, scraping, digging, carrying, stock piling, loading, spreading, mixing, grading, levelling.
- + Water and Sewer: Pairing perfectly with Excavators, Track Loaders will add all-weather mobility to your system. They will prepare the ground and access, feed the Excavator with material and pipes and will efficiently backfill the trench.
- + Tough environment: Track Loaders are an excellent solution when underfoot conditions are difficult (soft or sharp, uneven or steep slopes) or when space is constrained (deep foundations, tunnels)

### Specialized Applications:

- + Waste Handlers: machines are equipped with specific guarding, striker bars and seals, cooling system, landfill buckets, allowing the track loader to be a versatile machine for loading, sorting, excavation and spreading cover in landfills or transfer stations.
- + Ship Hold: The track loader offers the optimal combination of traction, high reach and machine balance. They have specific guarding, lifting eyes, lighting and specialized implements like coal buckets or trim blades.
- + Steel Mill: Factory designed and installed features equip your loader for the extreme heat and harsh conditions of steel mill work. Maneuverability, visibility and the breakout force needed for fast cycle times make track loaders a rugged and efficient choice for handling slag.

# LINKED SOLUTIONS LIMITLESS SUPPORT



By linking all our support and services together we've created a unique, self-sustaining Solutions Ecosystem, capable of solving any problem, anywhere at any time – all geared to help your machine keep going and going and going.

Find out more at [Cat.com](https://www.cat.com) or contact your local Cat<sup>®</sup> dealer

**CAT**<sup>®</sup>

# SKID STEER LOADERS AND COMPACT TRACK LOADERS

**SSL:** 216B3, 226B3, 232D3, 236D3, 242D3, 246D3, 262D3  
Gross power from 38 kW to 55.4 kW

**CTL:** 255, 265  
Gross power 55.4 kW

**D3 Models only** (points below not relevant to 216B3 and 226B3)

- + Gross horsepower – 38 kW to 55.4 kW
- + Sealed, pressurized cab for clean and quiet operation.
- + Speed sensitive ride control for smoother ride and maximum load retention.
- + The Cat exclusive electro-hydraulic system provides precise, responsive and effortless control.
- + Continuous flow, creep mode, dual self-level and return maximize productivity and efficiency and reduce fatigue.
- + Available with either joystick controls or hand-foot controls
- + Smart Attachment technology built into the machine as standard.





908

# COMPACT WHEEL LOADERS

906, 908, 914, 920

- + Net power – 55 kW to 74 kW.
- + Operating weights – 5600 kg to 8488 kg.
- + Optimized Z-bar linkage with parallel lift combines the digging efficiency of a traditional Z-bar with toolcarrier capabilities for powerful performance, versatility and precise control.
- + Electro-hydraulic system provides low-effort, precise control to achieve fast cycle times.
- + Attachments optimised for machine, inc performance series buckets on the 914/920 machines. All models have excellent pallet fork parallelism and optional rotary sensors, inc kickouts and snubbing.
- + 906/908 has been introduced with new operator environment, display with intuitive menus for performance and customisation or the drivetrain, hydraulics and maintenance schedules, plus improve performance with pressure compensated hydraulic valve, optional 40kph shift on the go powertrain and optional canopy, standard or deluxe cabs.



914



920



# SMALL WHEEL LOADERS

924K, 930K, 938K

- + Net power – 105 kW to 140 kW.
- + Operating weights – 12019 kg to 15485 kg.
- + Cat C7.1 ACERT™ engine with configurable auto idle shutdown saves on fuel burn.
- + Excellent all-around visibility and low-effort joystick controls.
- + Performance Series buckets and optimized Z-bar linkage combine the digging efficiency of a traditional Z-bar with tool carrier capabilities.
- + The parallel-lift and high-tilt forces throughout the working range enable you to work safely, and confidently, with precise load handling that makes any work easier.
- + Cylinder snubbing and set kick-outs reduce attachment wear.
- + Select your preferred powertrain mode via the touch screen, including Torque Converter, Hystat, ICE or Default modes.





# 966 GC

## MEDIUM WHEEL LOADERS

**PERFORMANCE LINEUP:** 950, 962, 966, 972, 980

**GC LINEUP:** 950 GC, 966 GC

- + Net Power – 151 kW to 303 kW.
- + Operating Weights – 18392 kg to 30344 kg.
- + Cat wheel loaders are powered by U.S. EPA Tier 3/EU Stage IIIA equivalent engines—Heavy-duty powershift transmission, includes a torque lockup clutch converter (except 950 GC and 966 GC), advanced system integration matches engine power and hydraulics to maximize machine performance and fuel efficiency.
- + The 950 GC & 966 GC provides the full value customers expect from a Cat machine in terms of performance, low fuel consumption, reliability and durability in moderate duty applications; all while being lower cost to own and simpler to operate and maintain.
- + Performance Series Buckets utilize a system-based approach to balance bucket shape against the machine's linkage, resulting in higher fill factors and better material retention when compared with other buckets of the same rated capacity..
- + Aggregate Package, available on 950 and above, enables maximum payloads and fuel efficiency, and optimizes pass match with larger trucks in aggregate re-handling applications.
- + Electrical and hydraulic service centers (except 966 GC) provide grouped access enhancing safety and convenience while reducing service time. Safe, convenient access to fuel fill, daily maintenance points and many filters means less servicing time required.
- + 950, 962, 966, 972 and 980 all include standard Cat technologies to monitor, manage, and enhance your jobsite operations. Cat Payload with Assist provides accurate weighing of the bucket payloads. Data is displayed in real time to improve productivity and loading accuracy with manual tip-off.
- + Product Link™ wirelessly connects the machine to the office, giving you access to production and essential health information needed to make timely, fact-based decisions to help you better run your business.
- + New Autodig allows the operator to fully automate bucket loading to improve fill factors and loading time.
- + Auto Set Tires promotes proper loading technique, significantly reducing tire slip and tire wear.



# LARGE WHEEL LOADERS

986K, 988GC, 988K, 990K, 992, 993K, 994K

- + Net Power – 335 kW to 1 297 kW.
- + Operating Weight – 44810 kg to 242563 kg.
- + 986K is the perfect replacement for 988B and 988F customers.
- + 986K, 988K and 990K are available as Aggregate Handlers, fully dedicated configurations maximizing machine payload in re-handling applications.
- + The 986K and the 988K are also available with a Block Handling Arrangement with a lift capacity of up to 54 ton at ground line.
- + Improved K Series machines increase productivity and fuel efficiency while reducing emissions, improving operator safety, comfort, serviceability, and reducing owning and operating costs.
- + Engines produce more power at lower engine speeds, reducing fuel consumption.
- + Designed to effectively pass match off-highway trucks for improved productivity.
- + Enhanced structural design for high reliability, durability, multiple rebuilds and high-hour component service lives.
- + Ergonomically designed cabs with low-effort controls and world-class visibility to truck beds and hoppers.
- + Ground level service access and extended service intervals enhance safety and reduce owning and operating costs.



# ONE MACHINE NO LIMITS



When you have to do everything, you need a machine that can do anything.  
With our huge range of attachments, you finally have it.

Learn more at [Cat.com](https://www.cat.com)



# BACKHOE LOADERS

426, 428, 432, 434, 444

- + Net Power – 68.5 kW to 74.5 kW.
- + Operating Weights – 8275 kg to 9543 kg.
- + Variable displacement hydraulic pump matches supply to demand, meaning the pump is not always running at full capacity, delivering class-leading fuel efficiency.
- + Load-sensing and flow-sharing valves actively manage the flow of oil to each function, so that when the operator selects multiple tasks, the machine responds efficiently providing smooth, effortless operation.
- + Differential Lock is standard on all backhoe loaders providing increased traction on poor underfoot conditions and reducing tire wear.
- + All Cat Backhoe Loaders have heavy-duty axles that deliver greater durability, low noise levels and superb traction on uneven surfaces.
- + All daily service checkpoints are grouped together for easy access; sealed-for-life axles and driveshafts eliminate the need to grease any time-consuming areas beneath the machine.
- + The entire range of Backhoe Loaders are equipped with an excavator style boom helping to increase productivity especially when truck loading or working around obstacles.



426



140 GC

# MOTOR GRADERS

**PERFORMANCE LINEUP:** 120, 140K, 160K, 150, 160, 14, 16, 18, 24

**GC LINEUP:** 120 GC, 140 GC

- + Net Power – 93 kW to 399 kW.
- + Operating Weights – 15699 kg to 74567 kg.
- + The 120 GC and 140 GC lever controlled, Tier 3 motor graders provide an alternative solution to the 120 and 140K to companies looking for simpler yet reliable, comfortable and economical machines for all type of operations.
- + Economy Mode can save up to 10 percent in fuel while Cat Connect integrated technology and services help you monitor, manage and enhance machine performance in any jobsite conditions.
- + The 16, 18 and 24 feature the “OK-to-Start” system, which automatically checks the engine coolant, engine oil, and hydraulic levels when the key is turned to the on position.
- + Grade Control Cross Slope is an optional, fully integrated, factory-installed system that helps operators improve grading efficiency and more easily maintain accurate cross slopes. This option is offered for joystick controlled machines and 120.
- + Cat Advanced Control Joysticks enable operators to control either Cat Grade Control Cross Slope, AccuGrade™, and/or configure auxiliary hydraulic functions, such as ripper, etc. without removing their hands from the joysticks.
- + Speed Sensitive Steering automatically makes steering less sensitive as ground speed increases for greater operator confidence and control—this boosts safety and efficiency.
- + 120, 140 GC, 150, 160 are available with the All Wheel Drive option.





# WHEEL TRACTOR SCRAPERS

621K, 623K, 627K, 631K, 637K, 657  
 (Only available in US EPA Tier 4 Final and EU Stage V)

- + Choose from elevated and standard open-bowl designs.
- + Heaped Capacities – 17.6 m<sup>3</sup> to 33.6 m<sup>3</sup>.
- + Maximum Travel Speeds – up to 56 km/h.
- + Rated Loads – 25038 kg to 47174 kg (25.1 metric Tons to 47.2 metric Ton).
- + Single and twin engine-powered machines to meet application conditions.
- + Wheel tractor scrapers provide long life durability, material flexibility, high productivity and controlled material spreading.
- + Available technology includes Sequence Assist, Load Assist\*, Cat Grade Control\*, and Payload Estimator\* to enable operators to be more productive in a variety of material types and applications.

\*Not available on 657.



# BUILT TO BE REBUILT



## REBUILD FOR ENHANCED PRODUCTIVITY

Cat® Certified Rebuild can enhance your machine's efficiency and capabilities to meet current standards at a lower cost.

## REBUILD FOR A SUSTAINABLE TOMORROW

We reuse up to 65% of parts when rebuilding your machine. This makes Cat Certified Rebuild a more environmentally sustainable solution.

## REBUILD FOR PEACE OF MIND

Protect your machine for up to five years and take advantage of your local Cat dealer support.



# SOIL COMPACTORS

## SMOOTH DRUM

**PERFORMANCE LINEUP:** CS11, CS12, CS14, CS16, CS19, CS20

**GC LINEUP:** CS10 GC, CS11 GC, CS13 GC

## PADFOOT DRUM

**PERFORMANCE LINEUP:** CP11, CP12, CP14, CP16, CP17

**GC LINEUP:** CP11GC, CP13 GC

- + **Vibratory Soil Compactors** are available with padfoot or smooth drum and feature the robust design and high reliability that Cat machines are known for, plus technological advancements that contribute to jobsite productivity and efficiency.
- + Operating Weights – 10 metric Tons to 20 metric Tons.
- + Superior compaction performance due to high static linear load and best-in-class amplitude.
- + Easy-to-use and simplified controls for easy operation.
- + Best-in-class, 360° visibility to the front and rear of machine for safe operation.
- + Proven, exclusive, world-class Cat features including the ultra-reliable pod-style vibratory system; the sealed-for-life, maintenance-free hitch bearing; and optional Cat Compaction Control.
- + Reliable Cat engines provide ample power and consistent performance. Standard Eco-mode reduces fuel use during normal operation.
- + Simple maintenance due to maintenance-free hitch bearings and extended maintenance intervals for vibratory system and hydraulic system, providing more uptime and lower maintenance costs.
- + Cat-exclusive compaction technology, MDP (Machine Drive Power), providing operators with a simple indication of compaction completed.
- + Optional Cat Compaction Control technology helps the operator determine when compaction has been completed to specification for greater productivity and uniform compaction density. Scalable solution can be configured to meet needs.



# ASPHALT PAVERS

AP300-06, AP355-06, AP400-07, AP455-07, AP500-07, AP555-07, AP600-07, AP655-07, AP1055-07

- + **Asphalt Pavers and Screeds** provide a high return on investment and lower owning and operating costs, feature fast-heating screed plates and fuel-efficient engines, and deliver smooth results for wide-width paving.
- + Paving Width – 1.7 meters to 10 meters with multiple screed selection.
- + Operating Weights – 8.0 metric Tons to 21.8 metric Tons offering the highest weight-in-class for superior tractive effort in asphalt and aggregate paving applications.
- + Available with Wheels, Steel Track undercarriage and Cat exclusive Mobil-Trac™ undercarriage options.
- + Exclusive, integrated 70 kW generator designed for long life and fast heating screed leading to higher daily production. Heating time as low as 15 minutes.



# ASPHALT COMPACTION SOLUTIONS

**ASPHALT COMPACTORS:** CB7, CB8, CB10, CB13, CB15, CB16

**UTILITY COMPACTORS**

**PERFORMANCE LINEUP:** CB1.7, CB1.8, CB4.0, CB4.4, CC4.0

**GC LINEUP:** CB2.5-03GC, CB2.7-03GC, CC2.7-03GC

- + **Tandem Vibratory Rollers** provide superb mat densities, long intervals between water refills with industry-leading water spray system and a single fill point, dual water pumps, triple filtration, intermittent operation and high capacity. Optional seating choices provide excellent visibility and enhance jobsite safety. Proven pod-style eccentric weight technology patented by Caterpillar.
- + Operating Weights – 1.6 metric Tons to 16 metric Tons for the full range of commercial and highway paving applications.



**PNEUMATIC COMPACTORS:** CW16, CW34

- + **Pneumatic Tyre Rollers** offer excellent visibility enhancing safety at jobsites, ECO-mode operation, even compaction, and excel on a variety of materials due to flexible air-on-the-run capability. Powertrain with coast feature enables smooth start and stop on asphalt mat, preventing mat damage.
- + Operating Weights – 5.2 metric tons to 27 metric tons flexible weight range through modular ballast system.
- + Gross horsepower – 75 kW (CW16), 96.5 kW (CW34).





PM620

# COLD PLANERS

PM310, PM312, PM313, PM620, PM622, PM820, PM822, PM825

- + New Cat **Cold Planers** are easy to use and deliver best-in-class productivity in applications ranging from milling highways to urban streets.
- + Milling drum width options 1.0m, 1.2m, 1.3m, 2.0m, 2.2m, 2.5m.
- + Heavy-duty powertrain driven by Caterpillar proprietary application designed powerful Cat C9.3 or C18 ACERT™ engines from 246 kW to 563 kW.
- + Operating weights between 20 metric Tons and 38 metric Tons offer best in class power-to-weight ratios for superior cutting traction.
- + Advanced Milling System with automatic load control and traction control system reduces slippage for optimum cutting performance even in deep plunge-cuts.
- + Proprietary Cat Grade Control provides simple, intuitive operation and precise performance with features such as ramp-in, ramp-out capabilities and enhanced flush-cut capability.

# ROAD RECLAIMERS

RM400, RM500, RM600, RM800

- + **Reclaimers/Stabilizers** with multiple application-specific rotor choices feature superior performance and reliability to achieve the most demanding job specifications in both full-depth road reclamation and soil stabilization applications.
- + Reliable, efficient operation driven by powerful Cat ACERT™ engines: 310 kW C9.3B on RM400, 403 kW C15 on RM500, 470 kW C18 on RM600 and 576 kW C18 on RM800.
- + Cat RMs offer a dependable rotor drive system with a powershift transmission and hydraulic clutch, plus automatic rotor bearing lubrication.

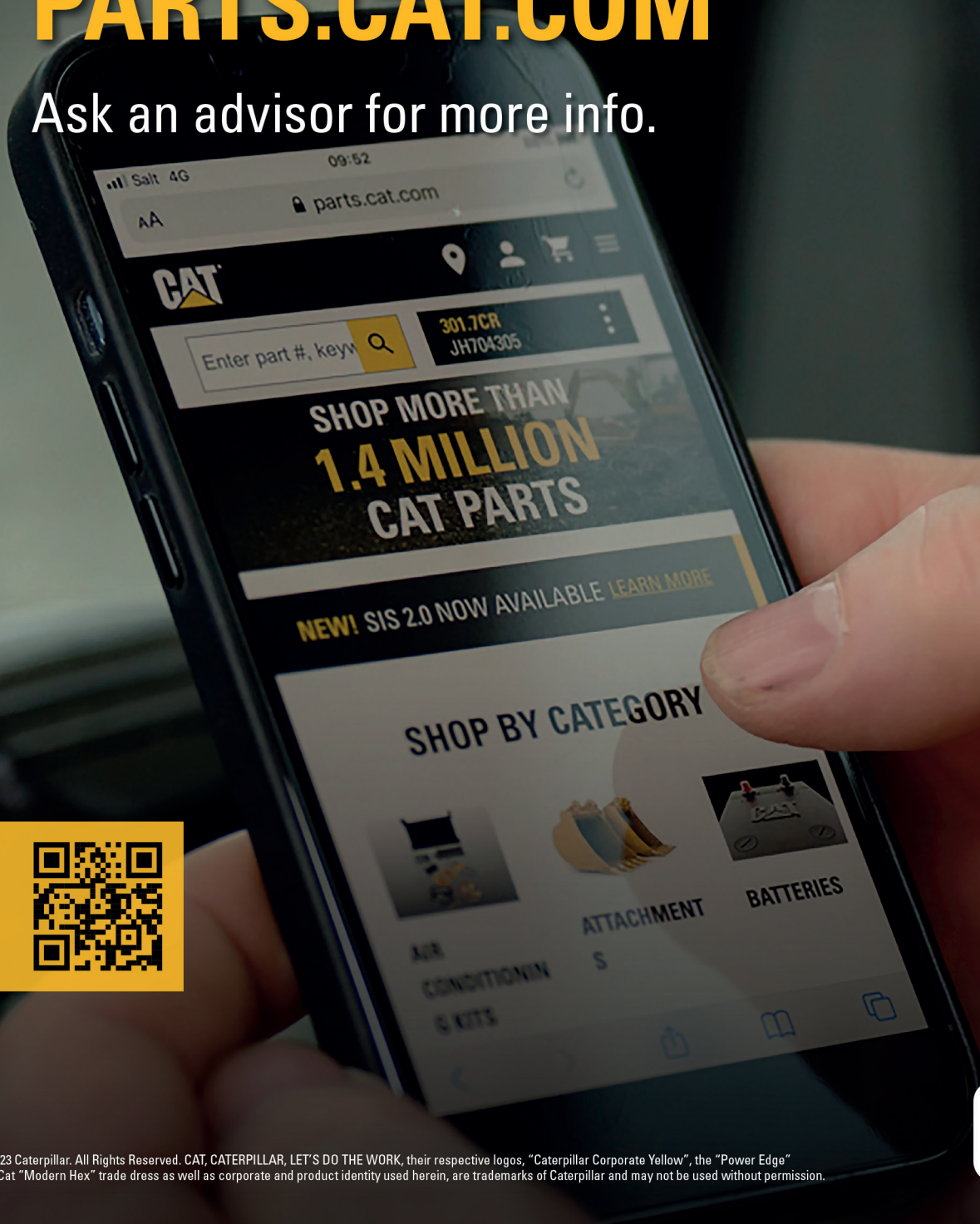


RM800

# THE PARTS YOU NEED ARE JUST A CLICK AWAY.

## ORDER PARTS ON PARTS.CAT.COM

Ask an advisor for more info.



# OFF-HIGHWAY TRUCKS

770G, 772G, 773E, 773G, 775G, 777 (LRC), 777G

## G-SERIES

- + Nominal payloads – 42.1 tons to 100 tons.
- + Net Power – 356 kW to 704 kW.
- + G-Series comes equipped with Standard Economy Mode, Adaptive Economy Mode, Engine Idle Shutdown and Auto Neutral Idle – features that enable fuel savings to optimize fuel economy throughout the haul cycle.
- + The 770G and 772G offer the following options: VIMS™ 3G, Caterpillar's Vital Information Management System; Truck Production Vital Information Management System; Truck Production data; TMPH (Ton Mile-Per-Hour) tire management system to help operate tires within their design specifications; and Product Link™ (Cellular standard).
- + G-Series Transmission Control System, Advanced Productivity Electronic Control Strategy (APECS), provides improved shift quality, faster acceleration, better speed on grade and faster cycle times.
- + Ideal for construction, quarry and mining applications involving long hauls, off-highway trucks carry large payloads, yielding low cost per ton.



# 777





## 773E

- + Payload – 61 tons.
- + Net Power – 537 kW.
- + Powered with Cat® 3412E engine that offers Standard Economy, suitable for lower to medium gradients that provides optimum fuel economy.
- + World-class, ergonomically designed cabin and enhanced technology come with standard Vital Information Management System™ and Truck Payload Monitoring system to manage the machine performance data (machine operating time, fuel consumption & payload) remotely with Product Link™ (optional Cellular or Satellite). This helps customer to lower their cost per ton.
- + Planetary Powe Shift transmission with lock-up torque converter provide smoother shifts on grade.
- + Enhanced safety features on the machine include increased visibility, 4-point seat belt for operator, and brakes that meet ISO 3450:2011.

## 777

- + Payload – 98.2 tons.
- + Net Power – 711 kW C32 ACERT™ – EPA Tier2 engine.
- + LRC machine is powered with updated C32 ACERT™ engine that offers Standard Economy, Engine Idle Shutdown and Delayed Engine Shutdown features that provides optimum fuel economy throughout the haul cycle with increased reliability.
- + Lighter empty machine weight with best-in-class payload enables customer to carry more payload to increase productivity.
- + World-class, ergonomically designed cabin and enhanced technology come with standard Vital Information Management System™ and Truck Payload Monitoring system to manage the machine performance data (machine operating time, fuel consumption & payload) remotely with Product Link™ (optional Cellular or Satellite). This helps customer to lower their cost per ton.
- + ECPC transmission with updated electronics delivers faster, & smoother shifts on grade.
- + Enhanced safety features on the machine include increased visibility with additional lights, 4-point seat belt for operator, and brakes that meet ISO 3450:2011.
- + Reliable mining truck designed for the toughest applications, also rugged enough for quarry and construction applications. Lower operating cost and durability help ensure economical, dependable operating life.



# ARTICULATED TRUCKS

**PERFORMANCE LINEUP:** 725, 730, 730 EJ, 735, 740 EJ, 745

**GC LINEUP:** 740 GC

- + Net Power – 249 kW to 367 kW .
- + Hauling capacities – 15 m<sup>3</sup> to 25.5 m<sup>3</sup>.
- + New world-class cab with extraordinary comfort and reduced in-cab noise to 72 dB(A).
- + Assisted Hoist System for automatic body raise and lower.
- + Advanced Automatic Traction Control eliminates wheel slip for maximum traction in poor ground conditions, without any operator interaction.
- + Automatic Retarder Control, no lever fitted, provides safe and productive downhill braking.
- + Combined Hoist / Transmission Lever enables gear selection, hoist control and park brake in one lever.
- + Cat Detect with Stability Assist warns the operator if there is a risk of the machine tipping over.
- + Optional Cat Production Measurement system enables operators to view real-time load weights and know precisely when their target payload is achieved.
- + The ejector ADT option can offer on-the-go, faster cycle times with lower spreading costs.



# HAVE A CRUSH IN 2.6 SECONDS

## NEW PRIMARY PULVERIZERS

### UNMATCHED CYCLE TIMES AND FORCE FOR HIGH-PERFORMANCE CONCRETE DEMOLITION

These new generation primary pulverizers use Cat's unique SpeedBooster technology to actively balance speed and power. So you get faster cycle times (up to 52%) and greater force (up to 21%). All three models feature bidirectional 360-degree rotation, so you can grab material from any angle. And with bolt-on wear components for quick field replacement, you'll spend more time working and less maintenance.

**For more concrete information, contact Caterpillar today!**



## FAST DEMOLITION

\*Cycle time P318.

© 2023 Caterpillar. All Rights Reserved. CAT, CATERPILLAR, LET'S DO THE WORK, their respective logos, "Caterpillar Corporate Yellow", the "Power Edge" and Cat "Modern Hex" trade dress as well as corporate and product identity used herein, are trademarks of Caterpillar and may not be used without permission.



### ADD VALUE TO YOUR BUSINESS

Through CVAs we offer customers the best possible service and support.

**CAT**  
LET'S DO THE WORK.



# WHEELED MATERIAL HANDLER

## MH3024

- + Net Power –128 kW 171 hp.
- + Maximum Operating Weight 26 500 kg 58,420 lb.

### Higher performance with lower fuel consumption

- + Get the job done faster with up to 20% greater swing torque.
- + The C4.4 engine can run on biodiesel up to B20 and meets EU Stage IIIA and U.S. EPA Tier 3 emission standards.
- + The advanced electro-hydraulic system provides the optimum balance of power and efficiency while giving you the control you need.
- + Valve priority puts hydraulic pressure and flow where you need it.
- + Boost lifting capabilities and improve the controllability of heavy loads with heavy lift mode.
- + Program and store your preferred power mode and joystick settings using your operator ID. The machine will automatically remember your selections, reducing operator stress and fuel consumption.
- + Product Link comes standard so you can remotely monitor machine health, location, hours, and fuel consumption on demand.

### Versatility keeps you productive and profitable

- + Match your machine to your application. Multiple configurations allow you to customize your machine to your needs.
- + Equip your MH3024 with an optional 15kW generator for magnet operation. Generator controls are fully integrated into the cab monitor.

### Work in comfort in the all-new cab

- + The Deluxe seat is heated and air adjustable, while the Premium seat is heated and ventilated and adjusts automatically.
- + Standard automatic climate control keeps you at the right temperature all shift long.
- + Stow your gear with plenty of in-cab storage beneath and behind the seat, overhead, and in the consoles. A cup holder, document holder, bottle holder, and coat hook are also provided.
- + Use the standard radio's USB ports and Bluetooth® technology to connect to personal devices.

### Reliability and durability you can count on

- + Count on your machine to withstand wear throughout the years. Boom, sticks, and other high-stress areas are reinforced with thick multi-plate fabrications, castings, and forgings to ensure quality and reliability.
- + Work up to 3000 m (9,840 ft) above sea level without derating.
- + Don't let the temperature stop you from working. The material handler has a standard high-ambient temperature capability of 52° C (125° F) and cold start capability of -18° C (-0°F).
- + Auto warm up speeds up hydraulic oil warming in cold temperatures and helps prolong the life of components.

### Safety

- + Cab Avoidance helps you avoid contact between your attachment and the cab.
- + Standard E-Fence prevents your machine from moving outside operator-defined parameters.
- + Keep your machine secure with Operator ID. Use your PIN code on the monitor to enable the push button starting feature.
- + Access all daily maintenance points from ground level –no need for you to climb on top of the machine.
- + Cab air pre-filtration reduces dust entry and air contamination. Upgrade to the optional Advanced Cabin Filtration System for additional protection against harmful particles.
- + Optional Falling Object Guard System (FOGS) provides protection from falling and flying debris.
- + Ground-level shutoff switch stops all fuel to the engine when activated and shuts down the machine.
- + Boom and stick lowering check valves prevent reverse flow, keeping your front linkage securely in place should the hydraulic system unexpectedly lose power.

### Superior serviceability

- + Track your machine's filter life and maintenance intervals via the in-cab monitor.
- + Change all fuel filters at a synchronized 1,000 hours.
- + Expect the new air intake filter with cyclone precleaner to last up to 1,000 hours.
- + The new hydraulic oil filter provides improved filtration performance, anti-drain valves to keep oil clean when the filter is replaced, and longer life with a 3,000-hour replacement interval – 50 percent longer than previous filter designs.
- + High-efficiency, electrically driven cooling fans run only when needed; you can program intervals, so they automatically reverse to keep cores clean without interrupting your work.
- + S-O-S<sup>SM</sup> ports simplify maintenance and allowing for quick, easy extraction of fluid samples for analysis.



# ULTRA HIGH DEMOLITION EXCAVATORS

## 340 UHD, 352 UHD

- + The 352 UHD, powered by the CAT C13 Tier 3 engine, has a maximum pin height of 28 m with a up to 3.7 T work tool weight.
- + The 340 UHD, powered by the CAT C9.3B Tier 3 engine, has a maximum pin height of 25 m with a up to 3.3 T work tool weight and another UHD boom at 22 m pin height with a up to 3.7 T work tool weight.
- + This makes these 340 UHD and 352 UHD new generation the best-in-class machines on the market.
- + Both models feature a 4 m wide undercarriage with 600 mm tracks that can be retracted under 3 m for easy transportation, a tilting demolition cab with premium seat and a 10" touch screen monitor with a stability monitoring system for reliable operation.
- + Retrofit booms can be fitted on the base machine for maximum machine utilization. The boom swap operation can be done in less than 15 minutes with 2 people.

340 UHD and 352 UHD are on request.





# ATTACHMENTS

**A**ttachments for Cat machines are the perfect performance match for construction, earthmoving, demolition and many other applications.

Using our high-quality work tools in combination with Cat machines provides you with the right tool for your application and a tool that has been designed to work most efficiently with a Cat machine. No matter which tool you select from our extensive range of

attachments, you benefit from uninterrupted productivity.

A single point of contact for all your machine and attachment needs and a source for unrivaled spare parts and service is our global dealer network.

That's an unbeatable combination. Even our tools are characterized by their high resale value.



**Blades:** Compact Track Loaders, Multi-Terrain loaders, Dozers and Motorgraders



**Block-Handling Work Tools:** Wheel Loaders



**Compactor Plates:** Backhoe Loaders, Excavators, Mini Excavators and Wheeled Excavators



**Demolition & Sorting Grapples:** Excavators, Wheeled Excavators, Mini Excavators and Material Handlers



**Rotary Cutters:** Excavators and wheeled excavators



**Hammers:** Skid Steer Loaders, Mini Excavators, Excavators, Wheeled Excavators and Backhoe Loaders



**Hex CW Couplers:** Material Handlers, Excavators, 5 up to 100 ton



**Multi-Processors:** Excavators and Wheeled Excavators



**Orange Peel Grapples:** Excavators, Wheeled Excavators and Material Handlers



**Rippers:** Excavators, Mini Excavators and Backhoe Loaders



**Scrap Shears:** Compact Track Loaders, Multi-Terrain loaders, Excavators, Skid Steer Loaders, Wheeled Excavators, Mini Excavators and Material Handlers



**Wheel Loader Buckets:** Wheel Loaders, Compact Wheel Loader, Small Wheel Loader and Backhoe Loader



**Buckets:** Skid Steer Loaders, Compact Wheel Loaders, Small Wheel Loaders, Backhoe Loaders and Telehandlers



**Forks:** Skid Steer Loaders, Compact Wheel Loaders, Small Wheel Loaders, Backhoe Loaders and Telehandlers



**Couplers:** Skid Steer Loaders, Compact Wheel Loaders, Small Wheel Loaders, Mini Excavators, Backhoe Loaders and Telehandlers



**Brooms and Accessories:** Skid Steer Loaders, Compact Wheel Loaders, Small Wheel Loaders and Backhoe Loaders



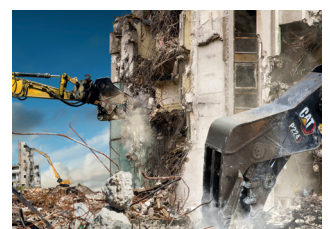
**Cold Planers and Wheelsaws:** Skid Steer Loaders, Compact Wheel Loaders, Mini Excavators and Backhoe Loaders



**Mulch and Brush Cutters:** Skid Steer Loaders, Compact Wheel Loaders and Mini Excavators



**Auger and Auger Bits:** Skid Steer Loaders, Compact Wheel Loaders, Mini Excavators and Backhoe Loaders



**Pulverizers:** Primary and Secondary Demolition Pulverizers for excavators.

# CAT® AND SEM MACHINES ALL IN ONE PLACE.

**MORE CHOICES, BETTER SERVICE.  
AT YOUR CAT® DEALER.**

With SEM dozers, motor graders, wheel loaders and soil compactors alongside Cat® machines, we offer a full line up of equipment. You can also rent, finance, buy parts and maintain your Cat and SEM machines, all in the one place. So if it's great value and fast payback you're after, why deal with anyone else?

CAT 320 GX



CAT 950 GC



SEM816D



# EMPOWER YOUR SUCCESS



To meet the diverse needs of our growing customer base, Caterpillar is proud to offer utility customers the SEM product line, sold outside of China exclusively through Cat dealerships with dedicated SEM channels.

Caterpillar's SEM Brand is committed to improving the quality and breadth of its product line with a focus on research and development. Quality is further ensured by adhering to the proven Caterpillar Production System.

SEM equipment is designed to meet the specific needs of utility customers who focus on initial acquisition cost over long-term cost of ownership. SEM products meet or exceed all regional industry requirements for quality and reliability in the more than 90 countries where they are currently sold.



**As part of our commitment to our growing customer base worldwide, Caterpillar is proud to serve utility customers through our SEM brand.**

**Formerly Shandong SEM Machinery Co., Ltd, Caterpillar (Qingzhou) Ltd. (CQL) offers both SEM and Cat branded products.**

# WHEEL LOADERS

## A MODEL FOR EVERY APPLICATION

SEM Wheel Loaders began in the 1970's with a line of compact, small and mid-size loaders designed to work efficiently in a wide variety of applications. The product line has since expanded to include tractors, motor graders and soil compactors.

The SEM 66X Series Wheel Loaders are designed for heavy-duty working conditions with higher load capacities for heavier materials. SEM 65X Series Wheel Loaders feature low-speed engines for increased efficiency and offer a number of productivity-enhancing features. The SEM 63X Series Wheel Loaders are the ideal choice for light working conditions, with a performance series bucket that delivers 10% greater capacity than other bucket designs along with improved dump height. SEM 61X Series Wheel Loaders feature 10% higher dump clearance than others and offer a quick coupler to handle a wide selection of work tools.



MODEL	BUCKET CAPACITY (m <sup>3</sup> )	RATED POWER (kW)
SEM618D	0.9–1.0	60
SEM636D	1.5–2.5	92
SEM653D	2.7–4.5	162
SEM655D	2.7–4.5	162
SEM656D	2.7–4.5	162
SEM658D	2.6–4.0	162
SEM660D	3.3–5.5	178
SEM668D	2.9–5.5	178
SEM676D	4.2–7.0	199

# COMPACTORS

## HIGH PERFORMANCE AND VERSATILITY

SEM Soil Compactors are essential tools in many applications, including road, railway and airport construction and industrial yard compaction. The eccentric vibe pod design extends system life by up to 50 percent, with a sealed gear that eliminates contamination and prolongs bearing life. Reliability is further enhanced by a three-level alarm system that diagnoses machine operation issues and alerts the operator with indicator lights and audio alarms.

MODEL	OPERATION WEIGHT (kg)	RATED POWER (kW)
SEM510	10 000	97.5
SEM512	12 000	97.5
SEM514F	14 000	125
SEM518	18 000	129
SEM520	20 000	129
SEM522	22 000	140



# TRACK-TYPE TRACTORS

## HIGH EFFICIENCY AND RELIABILITY

As a Caterpillar brand, SEM is able to leverage more than 100 years of Caterpillar technology and design experience to provide a series of track-type tractors that meet your every application need. The hydrostatic system on all models delivers higher efficiency and maximum traction. The world-class undercarriage ensures high reliability and wear resistance, and the planetary final drive design provides increased torque ratio for higher transmission efficiency and lower maintenance costs. Joystick controls provide comfortable, precise blade operation. Advanced structural welding techniques and stress analysis tests ensure durability and long life.



MODEL	OPERATION WEIGHT (kg)	FLYWHEEL ENGINE POWER (kW)
SEM816D	16 900	131
SEM816D CH	17 160	131
SEM816D FR	18 580	131
SEM816D LGP	19 490	131
SEM816D DS	19 760	131
SEM822D	24 000	175
SEM822D CH	24 760	175
SEM822D FR	25 760	175
SEM822D DS	27 140	175
SEM822D LGP	27 880	175
SEM822D WHA	28 560	175
SEM832F STD	38 710	253
SEM832F DS	39 390	253
SEM832F CH	39 455	253
SEM832F WH	40 110	253

# MOTOR GRADERS

## EXCEPTIONAL COMFORT AND PRODUCTIVITY

SEM Motor Graders feature large, roomy cabs mounted on the front frame for an exceptional operator view to the blade and front axle, even during articulation. With a height of 1.9 meters, the cab is about 30 percent larger than other models, offering exceptional operator comfort that enables greater productivity. A seven-position link bar with electric-over-hydraulic controls enables ease of operation, and wide, optimum blade reach improves productivity. A standard blade float function enables the blade to lower without hydraulic pressure for increased versatility. The A-frame and drawbar use a tubular, flanged box-section design that eliminates the need for welds in high-stress areas and employs continuous top and bottom plate construction for maximum strength and durability.

MODEL	OPERATION WEIGHT (kg)	RATED POWER (kW)
SEM915	12 200	110
SEM917	13 500	125
SEM919	15 070	140
SEM921	15 930	162
SEM922 AWD	16 560	162



# LESS FUEL, MORE SAVINGS WITH CAT<sup>®</sup> MACHINES\*

## OUR PROMISE



**FUEL-EFFICIENT  
MACHINES**



**A PROMISED AVERAGE  
FUEL CONSUMPTION**



**IF YOU USE MORE,  
WE REFUND YOU THE EXTRA**



\*valid for machines covered by a Customer Value Agreement (CVA) offered by a Cat dealer.



**Contact your local dealer today to learn  
more about our Fuel Promise Program!**

