

# CAT® PL161 ATTACHMENT TRACKER

EQUIPMENT MANAGEMENT



## ATTACHMENT TRACKING AND MANAGEMENT SIMPLIFIED

Cat® PL161 attachment tracker is the most advanced OEM integrated solution for attachment tracking. The PL161 mounts easily to your attachments or anything else you want to track.

- The PL161 can be mounted to any asset brand.
- View the location of your attachments across multiple work sites.
- Reduce misplacement or theft of attachments by setting up jobsite boundaries (geofences).
- Track working hours per attachment to help predict the need for replacement wear parts or to replace the attachment itself.
- The PL161's compact size allows you to collect data about your attachment without interfering with the work it is doing.
- View and track your attachments through your PC's internet browser or mobile device.
- The PL161 comes pre-installed on many Cat attachments for excavators.\*



## RUGGED AND RELIABLE

The PL161 is designed to be extremely rugged and maintenance-free, allowing for installation in locations on assets exposed to harsh work environments. The device's firmware is preconfigured and installed. The PL161 communicates via Bluetooth® low energy technology to extend battery life for up to two years.

## WORK TOOL RECOGNITION

Save more time with the work tool recognition feature available on select track excavator and large wheel loader models.

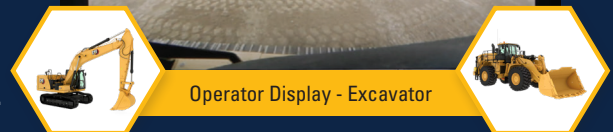
A simple shake of the attached tool confirms its identity and ensures all the attachment settings (pressure, flow, and dimensions) are correct so you can work quickly and efficiently.

Additionally, many excavator models (GC & GX excluded) feature work tool profiles that automatically import attachment settings into Cat Grade, Cat E-fence, and more.

Consult your Cat dealer for details. >>



Green Icon = PL161 Recognized



\*Availability may vary by region, consult your Cat dealer for details.

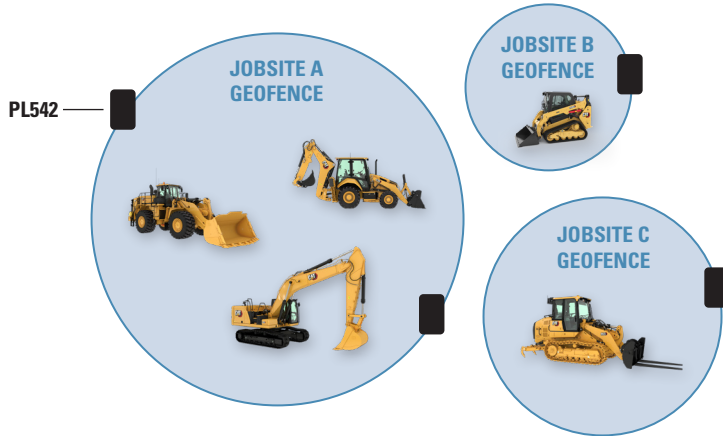


# HOW IT WORKS



PL161 sends a signal to the Bluetooth receiver or PL542 on the machine.

Location and operating hours are sent to VisionLink® using cellular or satellite connectivity.



## JOBSITE GEOFENCES

Create geofences within VisionLink\* by utilizing PL542 devices at any entrance/exit points on your jobsite(s) to monitor attachments with a PL161 leaving and returning.

Generate geofence reports within VisionLink to help maintain a watchful eye for potential work tool misplacements and thefts.

\* VisionLink Subscription Required

# TECHNICAL SPECIFICATIONS

## VOLTAGE

Battery Voltage..... 3.6V DC  
 Battery Life..... Up to 2 Years

## PHYSICAL SPECIFICATIONS

Enclosure Material..... Aluminum  
 Dimensions (L x W x H)..... 57 x 46 x 18 mm (2.24 x 1.85 x .71 in)  
 Weight..... 85 g (3 oz)

## BLUETOOTH® COMMUNICATIONS

Bluetooth Band..... 2.4 GHz (2.40 - 2.48 GHz)  
 Output Power..... 2.5 mW (4 dBm max)  
 Tracking Channels..... Standard BLE (37, 38, 39)  
 Accuracy..... Up to 30 m (100 ft)

## ENVIRONMENT

Operating Temperature..... -40°C to 85°C (-40°F to 185°F)  
 Storage Temperature..... -50°C to 95°C (-50°F to 203°F)  
 Ingress Protection..... IP68 (35 kPA)  
 Vibration..... 29.59 Grms (6 hours, 3 planes)  
 48 Hz @ 1.000 g<sup>2</sup>/Hz  
 60 Hz @ 1.000 g<sup>2</sup>/Hz  
 150 Hz @ 0.150 g<sup>2</sup>/Hz  
 900 Hz @ 0.150 g<sup>2</sup>/Hz  
 1200 Hz @ 0.750 g<sup>2</sup>/Hz  
 2000 Hz @ 0.750 g<sup>2</sup>/Hz

## REGULATOR COMPLIANCE

For country specific certifications, consult your Cat dealer.

## VISIONLINK

VisionLink is a cloud-based software application that takes the guesswork out of fleet management with key insights to maximize performance - regardless of fleet size. Manage all your assets, regardless of brand, type, connected or unconnected, owned, rented, or leased, from one comprehensive, easy-to-use application.