

# 558 GF/558 LL

SEGMENT SOLUTION FOR FORESTRY MACHINES  
A VISUAL APPLICATION GUIDE



Engine Power (ISO 14396)  
Operating Weight

225kW (302hp)  
GF 41 500 Kg (91490 lb)  
LL 44 100 Kg (97 200 lb)





# CONTENTS

SEGMENT SOLUTIONS	PAGE No.
HARVESTING AND PROCESSING	5
POWERCLAM	6
MILLYARD APPLICATION	7
LOG LOADING	8
ROAD BUILDING, DELIMBER CARRIER	9
<b>ATTACHMENTS</b>	
	<b>PAGE No.</b>
LINKAGE, REACH W/ROTATE, 3.2M STICK	10
LINKAGE, REACH W/O ROTATE, 3.2M STICK	11
LINKAGE, UNDER/UNDER, LOG LOADER	12
LINKAGE, OVER/UNDER, LOG LOADER	13
LINKAGE, UNDER / UNDER, POWERCLAM, LOG LOADER	14
BUCKET LINKAGE WITH EYE	15
BUCKET CYLINDER	15
OMISSION LINKAGE WITH CYLINDER	15
OMISSION LINKAGE WITHOUT CYLINDER	15
TRACK, 28" SINGLE GROUSER	16
TRACK, 28", DOUBLE GROUSER	17
TRACK, 33", TRIPLE GROUSER	18
HYDRAULIC PKG, TCS 20, REACH	19
HYDRAULIC PKG, TCS 22, LOG LOADER	19
HYD PKG, TCS 22, POWER CLAM	19
CAB, SIDE ENTRY	20
CAB, REAR ENTRY	21
TILTING RISER, SIDE ENTRY CAB, 22"	22
TILT RISER, REAR ENTRY CAB, 48", EASY LOCK	23
TILT RISER, REAR ENTRY CAB, 72", EASY LOCK	24
INTEGRATED CAN RADIO	25
INTEGRATED RADIO, CB + VHF.	26
RADIO, AM/FM/USB/BT, REAR ENTRY CAB .	27
RADIO, CB/VHF, REAR ENTRY CAB	28
RECEIVER, BLUETOOTH, SIDE ENTRY CAB	29
RECEIVER, BLUETOOTH, REAR ENTRY CAB	30
CAMERA REAR ENTRY CAB	31
CAMERA, REAR AND RIGHT SIDE, 22" RISER	32
CAMERA REAR AND RIGHT SIDE, 48" RISER, REAR ENTRY CAB	33
CAMERA REAR AND RIGHT SIDE, 72" RISER, REAR ENTRY CAB	34
LIGHTS 4, SIDE ENTRY CAB FRONT	35
LIGHTS 6, SIDE ENTRY CAB FRONT	36
LIGHTS 4, REAR ENTRY CAB FRONT	37
LIGHTS 6, REAR ENTRY CAB FRONT	38
LIGHTS, 1, SIDE ENTRY CAB, REAR, ADDITION	39
LIGHTS, 1, REAR ENTRY CAB, REAR	40
LIGHTS, WORKING, TILT RISER, LEFT SIDE	41
LIGHTS, 2, 22" RISER, SIDE ENTRY CAB	42
LIGHTS, 2, 48" RISER, REAR ENTRY CAB	43
LIGHTS, 2, 72" RISER, REAR ENTRY CAB	44
LIGHTS, 1, ADDITIONAL, 48" / 72" BOLTED RISER, SIDE ENTRY CAB	45
LIGHTS, 1, ADDITIONAL, 48" / 72" EASY LOCK RISER, REAR ENTRY CAB	46
LIGHTS SURROUND, ADDITIONAL	47

# CONTENTS

<b>SEGMENT SOLUTIONS</b>	<b>PAGE No.</b>
WIRING AUXILLARY RELAY	48
PRODUCT LINK, CELL/SAT, PL083, SIDE ENTRY CAB	49
WIRING, PRODUCT LINK, SIDE ENTRY CAB	49
WIRING, PRODUCT LINK, REAR ENTRY CAB	49
COVER, REAR CAMERA, W/ CTWT LIGHT	50
BOX, SAW, 35"	51
BOX, SAW, 50"	52
SCRAPER, CARRIER ROLLER	53
BUG SCREEN	54
STARTING AID, ETHER .	55
BLOCK HEATER, 120V	56
COUPLER, PIN GRABBER W/O PIN CB	57
COUNTERWEIGHT 11023Lb / 5.1 T	58
COUNTERWEIGHT 13448Lb / 6.1 T	58
STORAGE PROTECTION	59
STORAGE PROTECTION FROM COGON GRASS	59

<b>WORK TOOLS</b>	<b>PAGE No.</b>
GRAPPLE, GLL55 LOG LOADING	60
GRAPPLE, GLL60 LOG LOADING	60
HEEL FABRICATION, UNDER/UNDER	61
HEEL, UNDER/UNDER	62
HEEL, OVER/UNDER	63

<b>AFTERMARKET KITS</b>	<b>PAGE No.</b>
INSPECTION LIGHT KIT	64
SIGNAL CONTROLLER KIT, SIDE ENTRY CAB	65
SIGNAL CONTROLLER KIT, REAR ENTRY CAB	66
FOOT PEDAL SWING KIT	67
LIGHT GUARD	68
<b>SOFTWARE ENABLED ATTACHMENT</b>	
JOYSTICK STEERING	69
SWING ALARM	70
ADVANCED IMPLEMENT AND TOOL PRIORITY	71
CUSTOM JOYSTICK	72
CUSTOMER VALUE AGREEMENT	73
MAINTAINENCE INTERVALS	74-75
PART NUMBER INDEX	76-78

# CAT® 558

WOODS WORK MADE PRODUCTIVE,  
PROFITABLE, AND PLEASANT

Step by step guide  
to configure your  
558 General forestry  
or Log loader machine  
starting with the base  
machine, attachments,  
worktools and kits,  
suited for your application  
or job at hand.



**GENERAL FORESTRY**



**LOG LOADER**

## NEXT GENERATION FOREST MACHINES

Cat® next generation forest machines offer you more value than ever for your business.

- + MORE PERFORMANCE
- + GREATER COMFORT
- + ENHANCED SAFETY

Simply put, Cat next generation forest machines help you move more timber to make more money.



# SEGMENT SOLUTIONS

## HARVESTING AND PROCESSING

The purpose built processor configuration provides front linkage and hydraulic package for installing the dangle head processor. Many processing heads utilize hydraulic feed rolls and delimiting knives to feed trees through the head, delimiting all the branches. This also has the ability to measure length, diameter and volume and cut into desired length of logs.



558 Log Loader	Feature Compatibility	Application	
		Powerclam / Butt N Top	Straight Boom Processor carrier
Cab	Rear Entry Cab, 48" easy lock riser	✓	✓
	Rear Entry Cab, 72" easy lock riser	✓	✓
	Side Entry Cab, 22" bolted riser		
	GF reach with rotate 3.2 stick, w/o rotate		
	GF reach with rotate 3.2 stick, w/ rotate		
	GF Linkage omission (delimber carrier)		
	LL under/under heel		✓
	LL over/under heel		✓
	LL powerclam / Butt N Top	✓	
	LL under/under heel, with ground saw hydraulics		
	LL over/under heel, with ground saw hydraulics		
	LL powerclam / Butt N Top, with ground saw hydraulics	✓	
Tracks	28" single grouser	✓	✓
	28" double grouser	✓	✓
	33" triple grouser	✓	✓



# SEGMENT SOLUTIONS

## POWERCLAM

Dedicated log loader configuration for applications including over / under heel (as shown), under / under heel, as well as powerclam, shortwood, or Butt n Top grapples. The powerclam is used to clear cut log from the hill side and prepare to load on to trucks.



558 Log Loader	Feature Compatibility	Application
		Powerclam / Butt N Top
<b>Cab</b>	Rear Entry Cab, 48" easy lock riser	✓
	Rear Entry Cab, 72" easy lock riser	✓
	Side Entry Cab, 22" bolted riser	
	GF reach with rotate 3.2 stick, w/o rotate	
	GF reach with rotate 3.2 stick, w/ rotate	
	GF Linkage omission (delimber carrier)	
	LL under/under heel	
	LL over/under heel	
	LL powerclam / Butt N Top	✓
	LL under/under heel, with ground saw hydraulics	
	LL over/under heel, with ground saw hydraulics	
LL powerclam / Butt N Top, with ground saw hydraulics	✓	
<b>Tracks</b>	28" single grouser	✓
	28" double grouser	✓
	33" triple grouser	✓



Dedicated log loader configuration for millyard applications including over / under heel (as shown), under / under heel, as well as powerclam, short-wood, or Butt n Top grapples.

# SEGMENT SOLUTIONS

## MILLYARD APPLICATION



558 Log Loader		Application
Feature Compatibility		Millyard Decking Heel & Grapple
<b>Cab</b>	Rear Entry Cab, 48" easy lock riser	✓
	Rear Entry Cab, 72" easy lock riser	✓
	Side Entry Cab, 22" bolted riser	✓
	GF reach with rotate 3.2 stick, w/o rotate	
	GF reach with rotate 3.2 stick, w/ rotate	
	GF Linkage omission (delimber carrier)	
	LL under/under heel	✓
	LL over/under heel	✓
	LL powerclam / Butt N Top	
	LL under/under heel, with ground saw hydraulics	✓
	LL over/under heel, with ground saw hydraulics	✓
	LL powerclam / Butt N Top, with ground saw hydraulics	
	<b>Tracks</b>	28" single grouser
28" double grouser		✓
33" triple grouser		✓



# SEGMENT SOLUTIONS

## LOG LOADING

Loading trucks with logs for transport to the mill. This includes both live heel and fixed grapple variants of the machine



558 Log Loader		Application
	<b>Feature Compatibility</b>	Truck Loading Heel & Grapple
<b>Cab</b>	Rear Entry Cab, 48" easy lock riser	✓
	Rear Entry Cab, 72" easy lock riser	✓
	Side Entry Cab, 22" bolted riser	✓
	GF reach with rotate 3.2 stick, w/o rotate	
	GF reach with rotate 3.2 stick, w/ rotate	
	GF Linkage omission (delimber carrier)	
	LL under/under heel	✓
	LL over/under heel	✓
	LL powerclam / Butt N Top	
	LL under/under heel, with ground saw hydraulics	✓
	LL over/under heel, with ground saw hydraulics	✓
	LL powerclam / Butt N Top, with ground saw hydraulics	
<b>Tracks</b>	28" single grouser	✓
	28" double grouser	✓
	33" triple grouser	✓



# SEGMENT SOLUTIONS

## ROAD BUILDING, DELIMBER CARRIER

This General Forestry configuration includes bucket, thumb, and quick coupler hydraulics and lines groups are included for use in forestry roadbuilding, landclearing, mulching, and loading chippers and grinders. The thumb-ready stick makes thumb installation simple and straightforward, and the optional medium pressure hydraulic circuit with dedicated variable displacement auxiliary pump allows flexibility for using rotating attachments like log grapples or powerclam grapples when needed. This provides a very versatile configuration for a variety of attachments and applications.



558 Log Loader		GF Roadbuilding
	<b>Feature Compatibility</b>	Bucket, thumb, Quick coupler hydraulics
<b>Cab</b>	Rear Entry Cab, 48" easy lock riser	
	Rear Entry Cab, 72" easy lock riser	
	Side Entry Cab, 22" bolted riser	✓
	GF reach with rotate 3.2 stick, w/o rotate	✓
	GF reach with rotate 3.2 stick, w/ rotate	✓
	GF Linkage omission (delimber carrier)	
	LL under/under heel	
	LL over/under heel	
	LL powerclam / Butt N Top	
	LL under/under heel, with ground saw hydraulics	
	LL over/under heel, with ground saw hydraulics	
	LL powerclam / Butt N Top, with ground saw hydraulics	
<b>Tracks</b>	28" single grouser	✓
	28" double grouser	✓
	33" triple grouser	✓



# ATTACHMENT

## LINKAGE REACH WITH ROTATE, 3.2 M STICK

### Includes:

- BOOM, REACH, GF
- LINES, BOOM, STD
- STICK, R3.2M (106")
- CYLINDER, BOOM
- CYLINDER, STICK
- LIGHT, REACH BOOM RH
- LIGHT, REACH BOOM LH
- LIGHT, GF BOOM, REAR
- LINES, S TRAVEL DR, W QC
- LINES, PUMP SUCTION
- CONTROL, AUX, 85 CC
- CIRCUIT, QUICK COUPLER
- LINES, HP, REACH BOOM
- LINES, BOOM, MP

Bucket, thumb, and quick coupler hydraulics and lines groups are included on General Forestry roadbuilder configurations for use in forestry roadbuilding, landclearing, mulching, and loading chippers and grinders. The dedicated variable displacement auxiliary pump allows flexibility for using rotating attachments like log grapples or powerclam grapples when needed.





# ATTACHMENT

## LINKAGE REACH, WITHOUT ROTATE, 3.2M STICK

**Includes:**

- BOOM, REACH, GF
- LINES, BOOM, STD
- STICK, R3.2M (106") HD
- CYLINDER, BOOM
- CYLINDER, STICK
- LIGHT, REACH BOOM LH
- LIGHT, REACH BOOM RH
- LIGHT, GF BOOM, REAR
- LINES, S TRAVEL DR, W/O QC
- LINES, PUMP SUCTION
- CIRCUIT, QUICK COUPLER
- LINES, HP, REACH BOOM
- LINES, QC, REACH BOOM
- LINES-HP, R3.2M (106") STICK
- LINES-QC, R3.2M (106") STICK

Boom, stick, and lines groups for bucket, thumb, quick coupler hydraulics. Medium pressure (rotate) line group and Auxiliary piston pump NOT included





**Includes:**

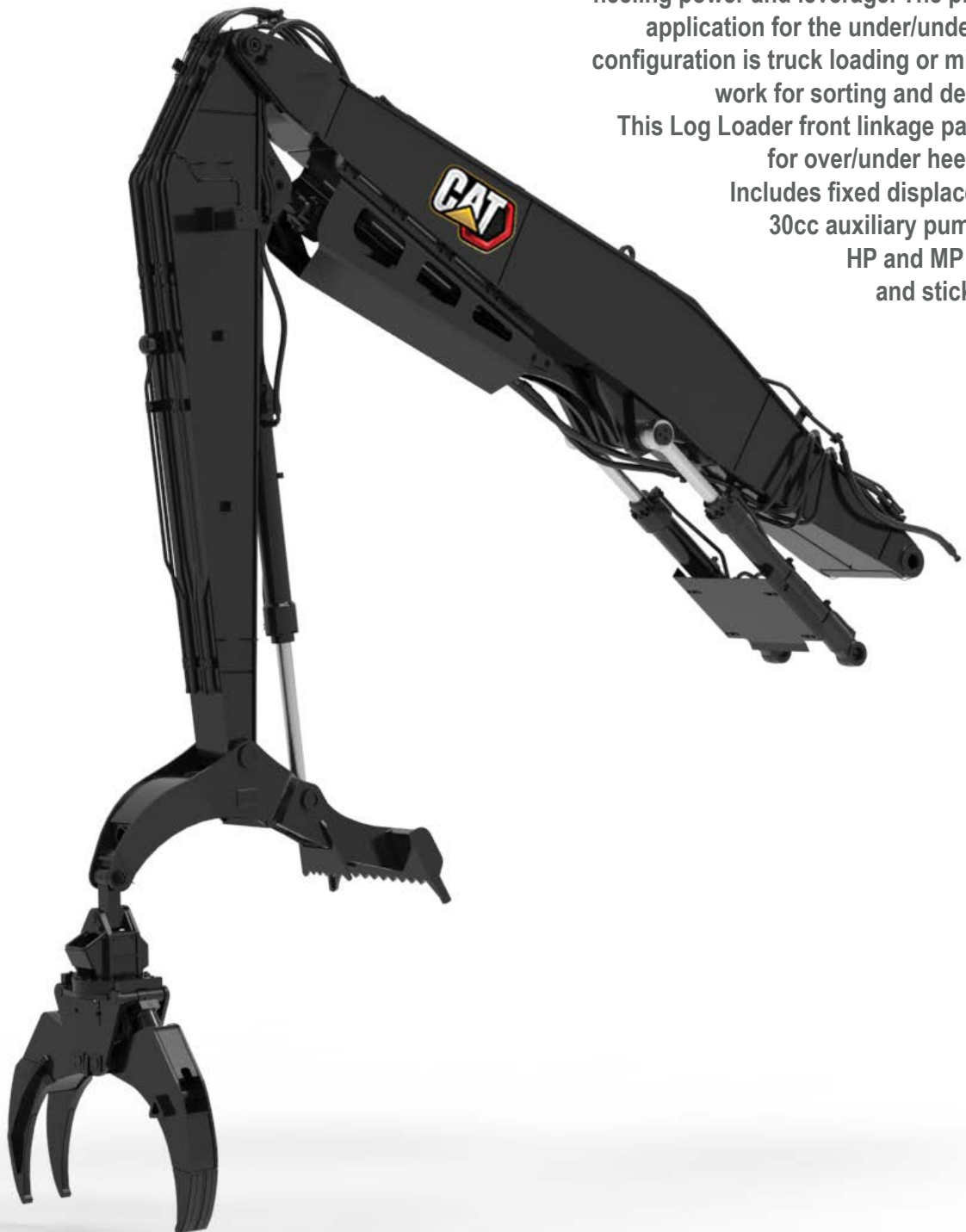
- BOOM, REACH, LL, U/U & O/U
- LINES, BOOM, U/U & O/U
- STICK, O/U
- CYLINDER, BOOM, LL
- CYLINDER, STICK, LL
- WIRING, BOOM, LL
- LIGHTS, STICK, O/U
- LINES, S TRAVEL DR, W/O QC
- LINES, PUMP SUCTION

## **ATTACHMENT**

### **LINKAGE UNDER / UNDER LOG LOADER**

The under/under heel log loader configuration is used for truck loading, shovel logging, millyard decking applications, as well as locally installed processor packages when combined with a processor installation kit. The heel cylinder is mounted underneath the stick in the under/under configuration, giving maximum heeling power and leverage. The primary application for the under/under heel configuration is truck loading or millyard work for sorting and decking.

This Log Loader front linkage package for over/under heel rack, includes fixed displacement 30cc auxiliary pump and HP and MP boom and stick lines





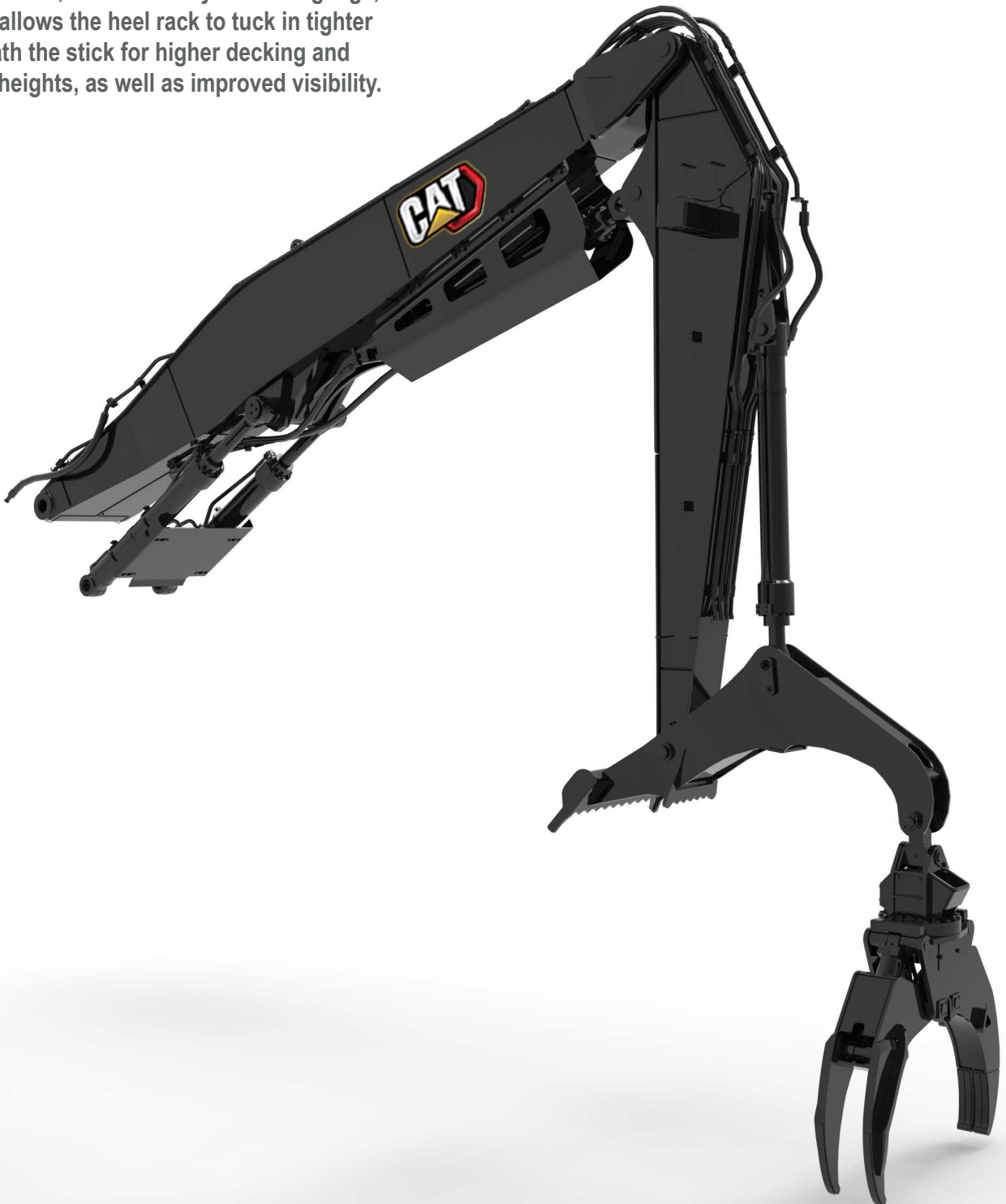
# ATTACHMENT

## LINKAGE OVER / UNDER LOG LOADER

The over/under heel log loader configuration is primarily used for millyard decking applications, inventorying logs into decks, unloading and reloading trucks, as well as sorting and merchandising. The over/under heel configuration has the heel cylinder mounted on top of the stick, out of the way of rotating logs, and also allows the heel rack to tuck in tighter underneath the stick for higher decking and level log heights, as well as improved visibility.

### INCLUDES:

- BOOM, REACH, LL, U/U & O/U
- LINES, BOOM, U/U & O/U
- STICK, U/U
- CYLINDER, BOOM, LL
- CYLINDER, STICK, LL
- LIGHT, STICK, U/U
- WIRING, BOOM, LL
- LINES, S TRAVEL DR, W/O QC
- LINES, PUMP SUCTION
- CONTROL, AUX, 30 CC
- BRACKET, CENTER HR & MC VALVE



# ATTACHMENT

## LINKAGE POWER CLAM, LOG LOADER

**Includes:**

- BOOM, REACH, LL, U/U & O/U
- LINES, BOOM, POWER CLAM
- STICK, POWER CLAM
- CYLINDER, BOOM, LL
- CYLINDER, STICK, LL
- WIRING, BOOM, LL
- LIGHTS, STICK, POWER CLAM
- LINES, S TRAVEL DR, W/O QC
- LINES, PUMP SUCTION
- CONTROL, AUX, 85 CC, POWER CLAM
- BRACKET, CENTER HR & MC VALVE

The powerclam / Butt N Top log loader configuration utilizes a top mounted tool cylinder for power rotating grapples. The Butt N Top grapple is primarily used for long log lengths and configured with hydraulic outriggers on the grapple in order to be able to orient the logs with butts ahead or tops ahead in truck loading and millyard applications.

Powerclam grapples are also power rotating grapples that can have 0, 1, or 2 outriggers on the grapple and typically utilize a 4&3 tine jaw configuration and are very versatile for handling measured log lengths or short wood for truck loading, decking trees at the landing from skidders, piling and loading chippers and grinders.

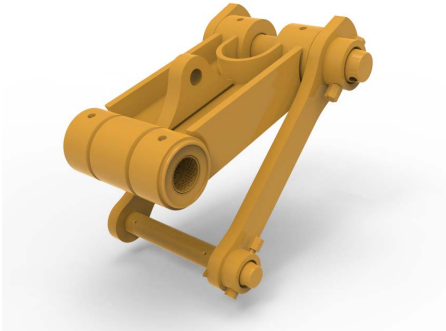




# ATTACHMENT

## OTHER LINKAGE

---



### BUCKET LINKAGE WITH EYE

BUCKET LINKAGE,  
- PROVISION OF EYE TO LIFT LOAD  
ONLY FOR USE WITH:  
LINKAGE - REACH W/ROTATE,  
LINKAGE - REACH FORESTRY MACHINE



### BUCKET CYLINDER

THIS BUCKET CYLINDER IS USED  
WITH DB LINKAGES  
CAN BE USED FOR LINKAGES  
WITH OR WITHOUT EYE

### OMISSION LINKAGE WITH CYLINDER

INCLUDES:  
-CYLINDER, BOOM.  
-LINES,  
-STRAIGHT TRAVEL DRAIN LINES,  
-W/O QUICK COUPLER

### OMISSION LINKAGE WITHOUT CYLINDER

INCLUDES:  
-LINES,  
-STRAIGHT TRAVEL DRAIN LINES,  
-W/O QUICK COUPLER  
Linkage NOT included

The 28" single grouser is especially useful in steeper ground applications and has more impact when travelling on logging roads and primarily utilised in-wood. The narrower shoe width minimizes track bending and improves undercarriage life particularly in broken ground and tough underfoot conditions.

## ATTACHMENT

### TRACK SINGLE GROUSER 28" WIDTH



The 24" single grouser track undercarriage arrangement gives the most aggressive traction capability, with the use of taller grouser height and the ability to bite into the ground for reduced track chance slip.



# ATTACHMENT

## TRACK DOUBLE GROUSER 28" WIDTH

The 28" double grouser track undercarriage arrangement is the most versatile and popular shoe arrangement with a compromise between the aggressiveness of the single grouser shoe and the wider width and shorter grouser height of the triple grouser shoe.



The track gives good overall performance and durability for a variety of applications including soft underfoot as well as in-wood or at the landing. It has reduced impact on the roads compared to single grouser tracks.

The 31" triple grouser track undercarriage is most often used in the millyard application with improved surfaces as well as applications that require improved floatation.

## ATTACHMENT

### TRACK TRIPLE GROUSER 33" WIDTH



Wider tracks with lower grouser height provide smoother travel and good operating condition on improved surfaces, as well as in-wood applications needing more floatation.



# ATTACHMENT

## HYDRAULIC PACKAGE

---

**INCLUDES:**

-VALVE Arrangement, LogLoader W/ TCS 20  
-LINES, HOSE, General Forestry OR  
Log Loader  
-CONTROL, AUX, Tool Control System 20  
-LINES, OIL CLEANER  
ONLY FOR USE WITH:  
LINKAGE, REACH W/O ROTATE  
LINKAGE, REACH W/ ROTATE  
and OMISSION Linkages

### HYDRAULIC PACKAGE TOOL CONTROL SYSTEM 20, REACH

This Hydraulic package is used for Roadbuilder or General forestry configurations.

This hydraulic package has a two way pump with a common circuit (one or two ways) circuit pressure and change is electronically controlled by thumb wheel.

**INCLUDES:**

-VALVE Arrangement, LogLoader  
W/ TCS22-LINES,  
-HOSE, General Forestry OR Log Loader  
-CONTROL, ADV, Tool Control System 22  
-LINES Group, OIL CLEANER  
ONLY FOR USE WITH:  
LINKAGE, UNDER/UNDER, LL

### HYDRAULIC PACKAGE TOOL CONTROL SYSTEM 22, LOG LOADER

Tool control package for under/under or over/under heel log loader with ground saw slasher package, includes hydraulic connections for ground saw slasher circuit. This hydraulic package has two way pump with 1 / 2 way circuit and electronic control.

**INCLUDES:**

-VALVE ARR, LL W/O SLASHER  
-LINES, HOSE, POWER CLAM  
-CONTROL, TCS 22, POWER CLAM  
-LINES GR, OIL CLEANER  
ONLY FOR USE WITH:  
LINKAGE, U/U W/ POWERCLAM, LL

### HYDRAULIC PACKAGE TOOL CONTROL SYSTEM 20, POWER CLAM

Tool control package for power clam log loader with ground saw slasher package, includes hydraulic connections for ground saw slasher circuit.

The side entry cab has ingress from the left side of the machine.  
The cab is certified for ROPS, WBC, OPS, SAE, FOPS, ISO and OR-OSHA.

## ATTACHMENT CAB SIDE ENTRY



Includes in addition to standard equipment:  
Standard operator controls,  
32 mm (1.25") front window,  
Mounting bosses in cab for processor electronics,  
Left and right side sliding windows  
Only for use with:  
general forestry machine  
log loader forestry machine





# ATTACHMENT

## CAB REAR ENTRY

The rear entry cab has ingress from the right side of the machine over the platform from the rear of the cab.

This is a safer way to enter the operator station. This cab is spacious and has increased visibility.

The cab is certified for ROPS, WBC, OPS, SAE, FOPS, ISO and OR-OSHA.

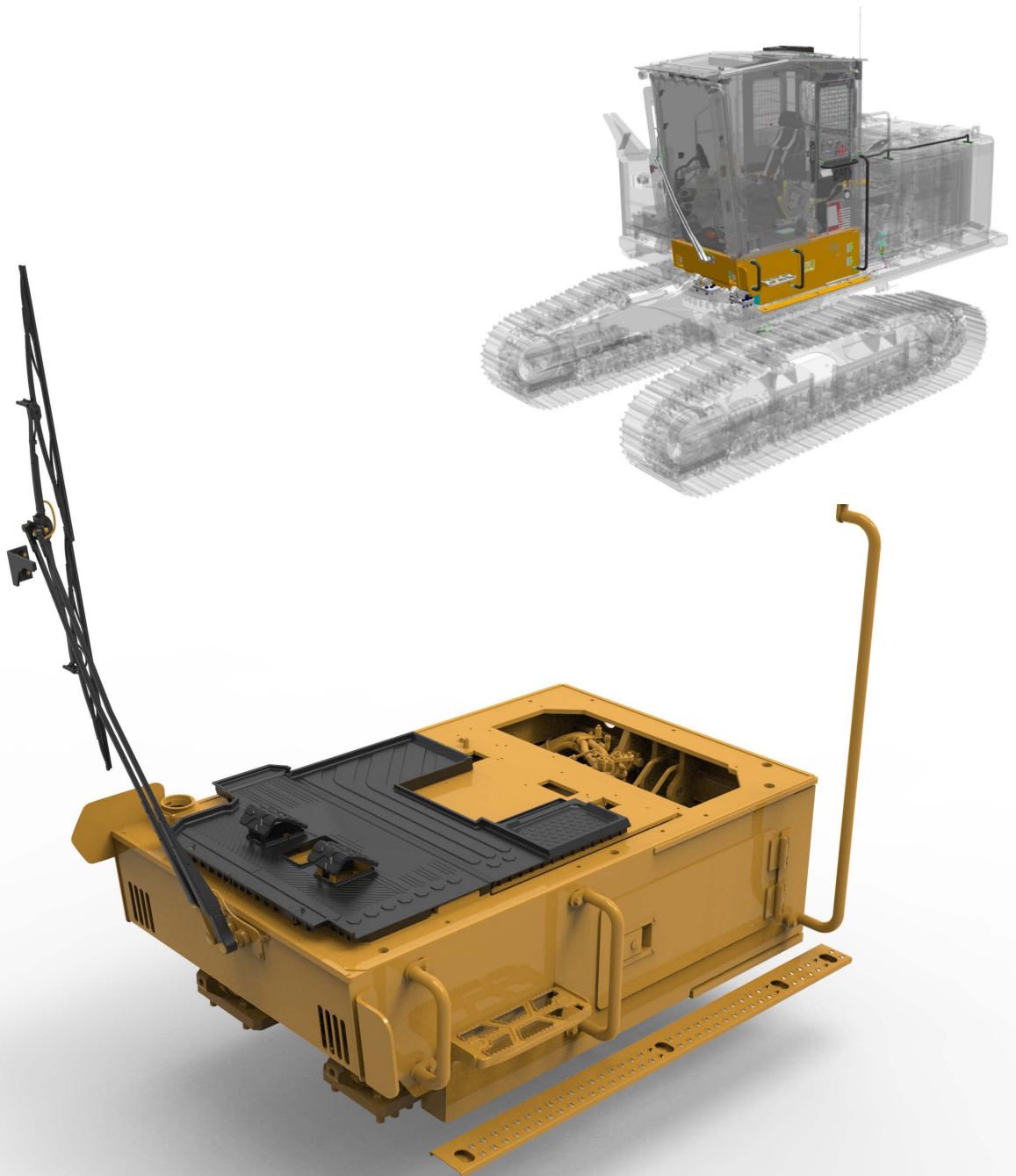


Includes in addition to standard equipment:  
Standard operator controls,  
32 mm (1.25") thick front window,  
Mounting bosses in cab for processor electronics,  
Left and right side sliding windows  
Only for use with:  
Log Loader forestry machine

# ATTACHMENT

## TILTING RISER, SIDE ENTRY 22"

This is a riser with a height of 22", available for the side-entry cab to increase the transportability of the FM machine with a work tool.



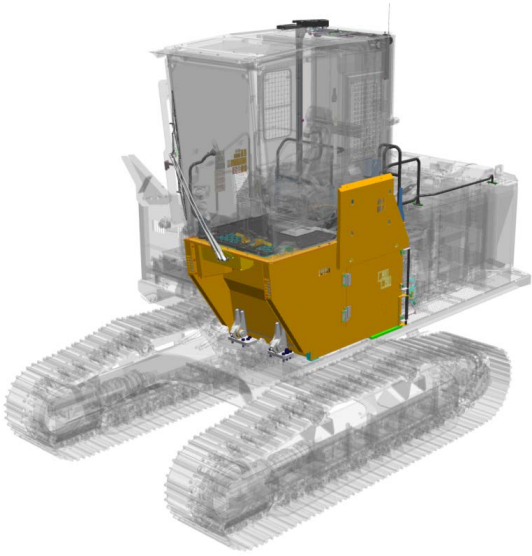
Includes 22" cab riser with hydraulic tilt to tilt cab forward for machine transport hauling.



This 48" cab riser is mainly used for the log loaders to help see loading of logs on to trucks from a higher eye point. This Riser can be tilted with a hydraulic motor, with the cab during transportation.

## ATTACHMENT

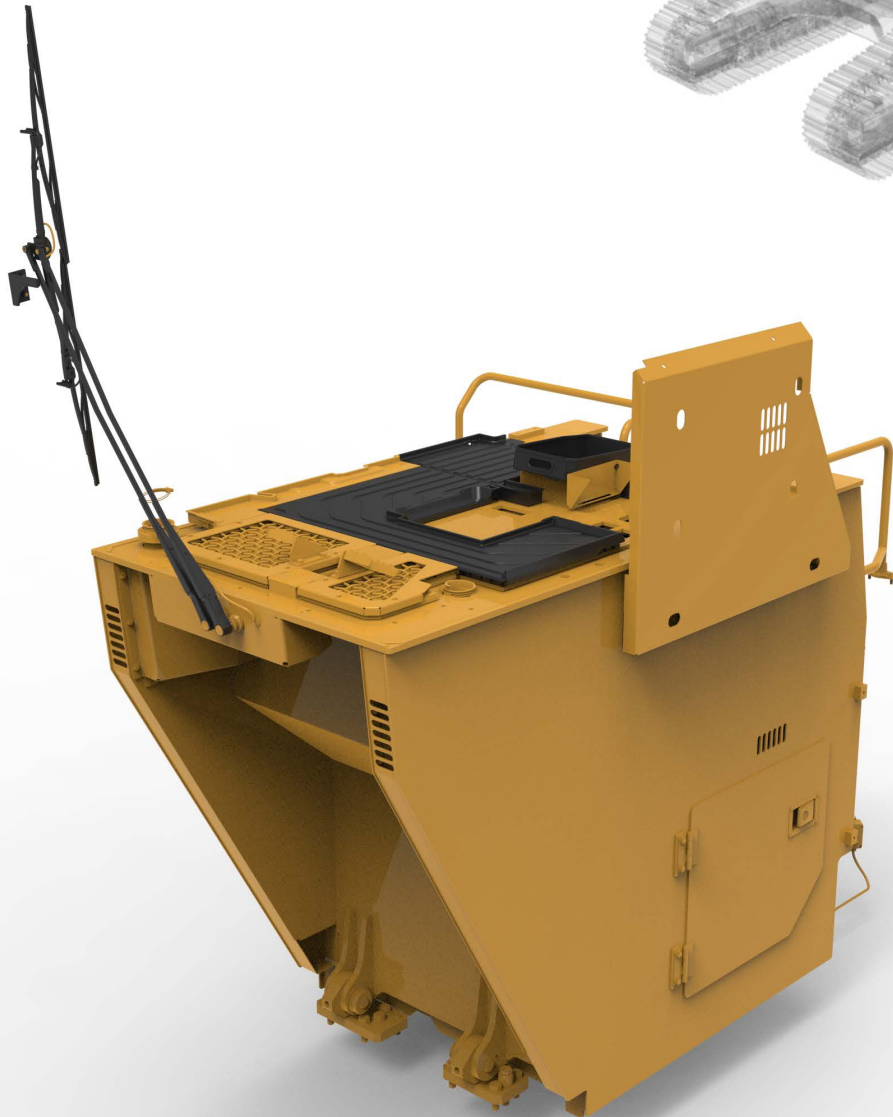
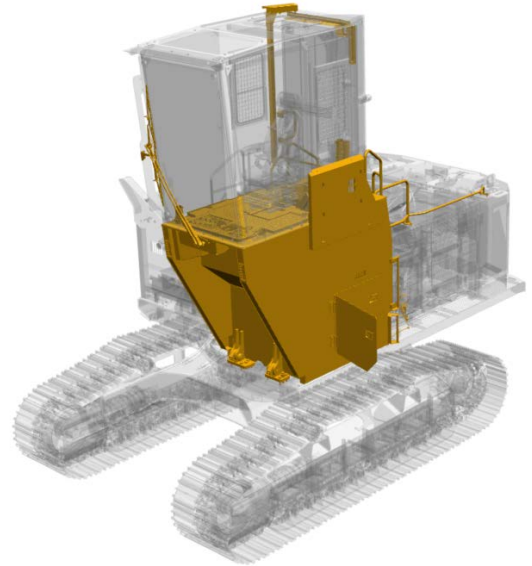
TILTING RISER,  
REAR ENTRY CAB,  
48" ,EASY LOCK



# ATTACHMENT

TILTING RISER,  
REAR ENTRY CAB,  
72", EASY LOCK

This 72" cab riser is mainly used for the log loaders to help see loading of logs on to trucks from a higher eye point. This Riser can be tilted with a hydraulic motor, with the cab during transportation.

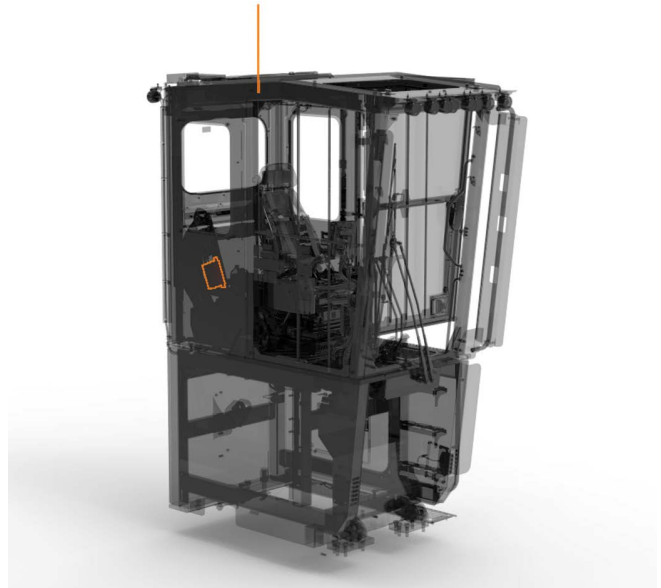




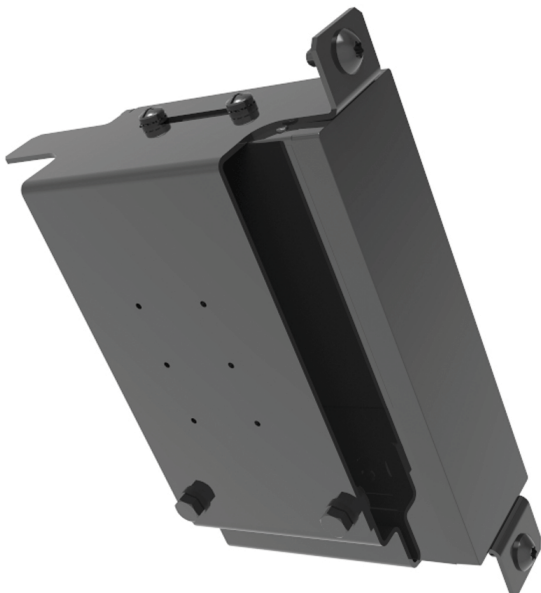
# ATTACHMENT

## INTEGRATED CAN RADIO

CAN radios are a platform that complements vehicle command and control functionality via CAN J1939. They are equipped with AM/FM worldwide Radio data system receivers including Digital audio broadcasting tuner, bluetooth and additional auxillary inputs. The CAN radios can be connected to a touch screen display or remote control in the vehicle to send or receive CAN J1939 messages. This is designed for high vareity of commercial agricultural and construction vehicles.



Integrated faceless AM/FM radio with Bluetooth technology. Interfaces with an advanced display. Availability varies by country. Only for use with: Side entry cab



Antennae

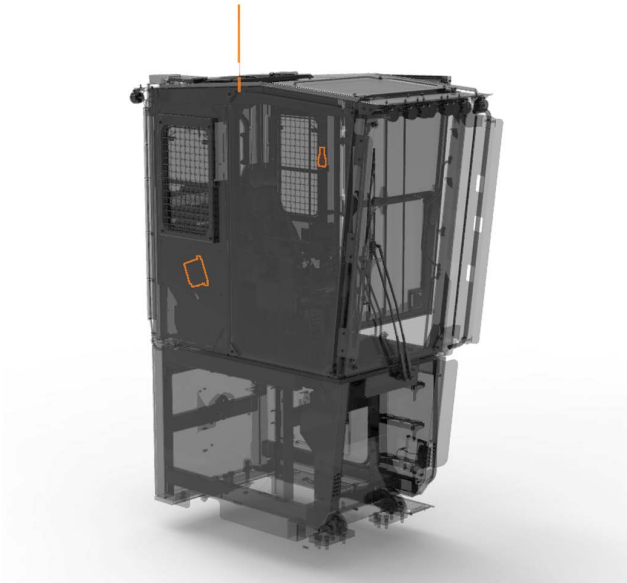
# ATTACHMENT

## INTEGRATED RADIO CB (Citizen brand) + VHF (Very High Frequency)

Integrated faceless AM/FM radio with Bluetooth technology. Interfaces with an advanced display.

Availability varies by country. Includes RADIO, AM/FM/USB/BT, plus a mounting bracket for a CB/VHF radio.

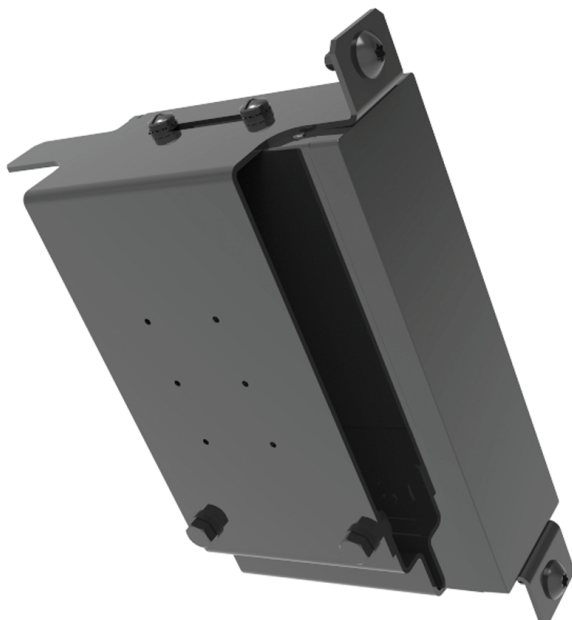
Only for use with: side entry cab



Antennae



Mounting bracket for a CB/VHF radio.



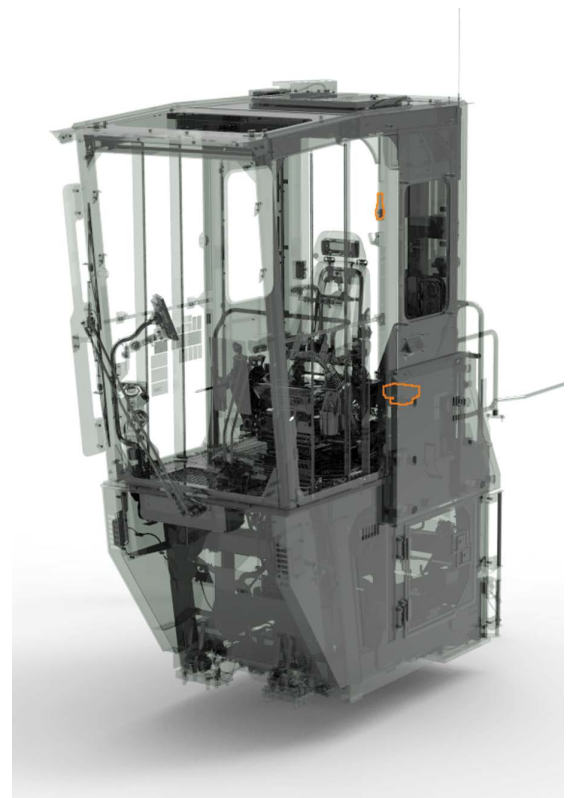




## ATTACHMENT

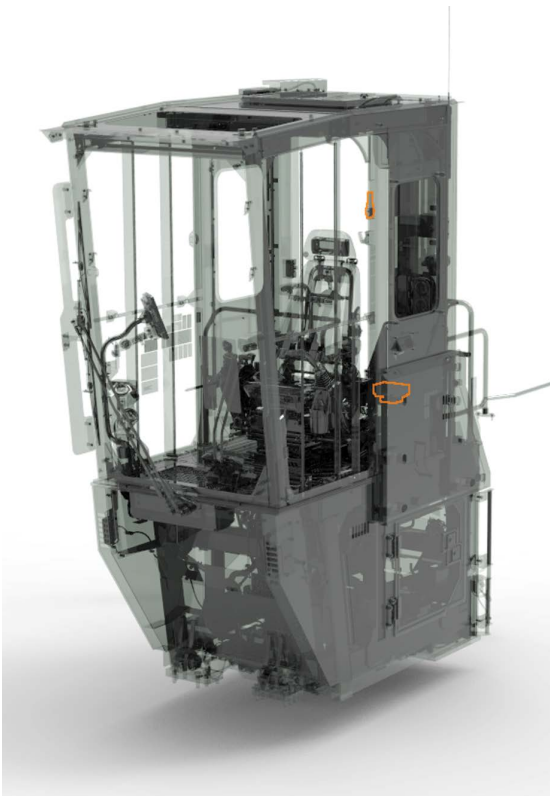
**RADIO, AM/FM,  
USB/Bluetooth  
REAR ENTRY CAB**

Integrated faceless AM/FM radio  
with Bluetooth technology for  
Rear entry cab. Interfaces with  
an advanced display.  
Availability varies by country.





Mounting bracket for a CB/VHF radio.



## ATTACHMENT

### RADIO, CB/VHF REAR ENTRY CAB

Integrated faceless AM/FM radio with Bluetooth technology. Interfaces with an advanced display.

Availability varies by country.

Includes RADIO, AM/FM/USB/Bluetooth, plus a mounting bracket for a CB/VHF radio.

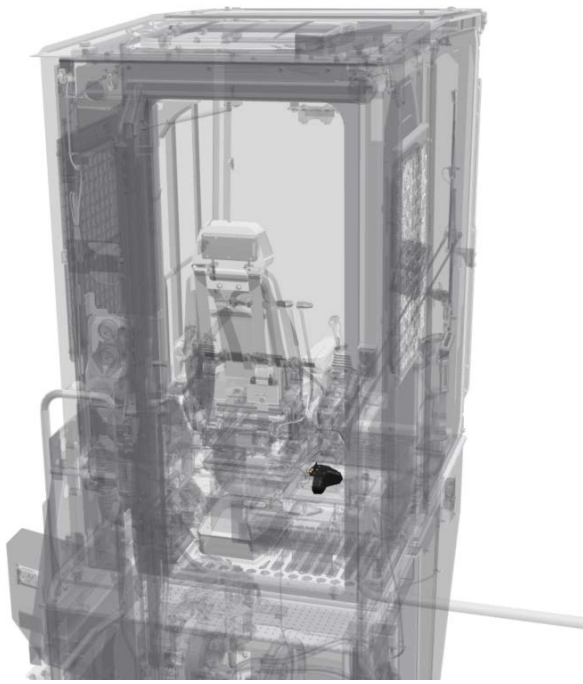


# ATTACHMENT

## RECEIVER BLUETOOTH SIDE ENTRY CAB

Bluetooth receiver for side entry cab.  
Only for use with: side entry cab.





## ATTACHMENT

### RECEIVER BLUETOOTH REAR ENTRY CAB

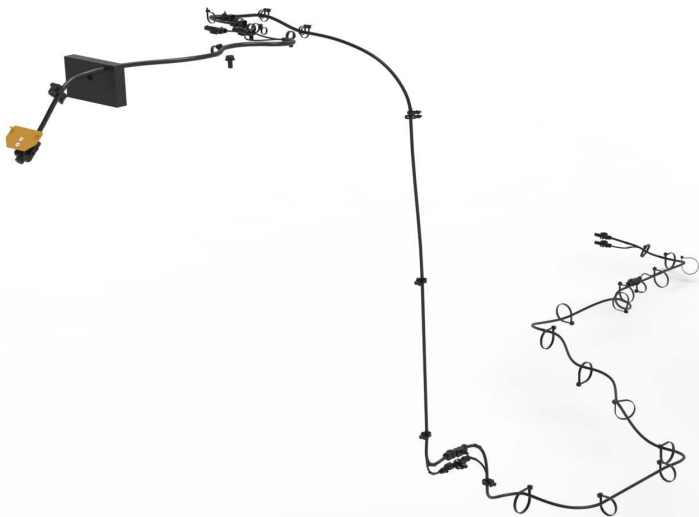
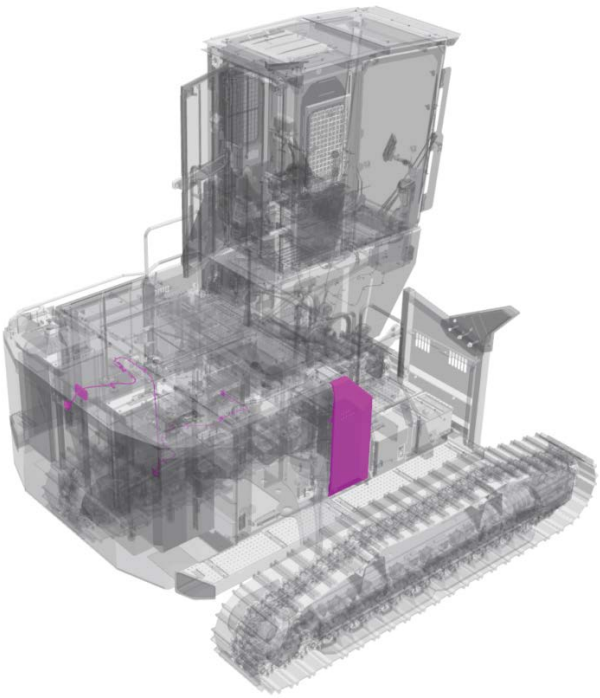
Bluetooth receiver for rear entry cab.  
Only for use with: rear entry cab



Rearview Camera is built into the counterweight providing view to the rear of the machine. This is a standard for all NGH forestry machines. Camera output can be seen on the machine display.

# ATTACHMENT

## CAMERA REAR VIEW

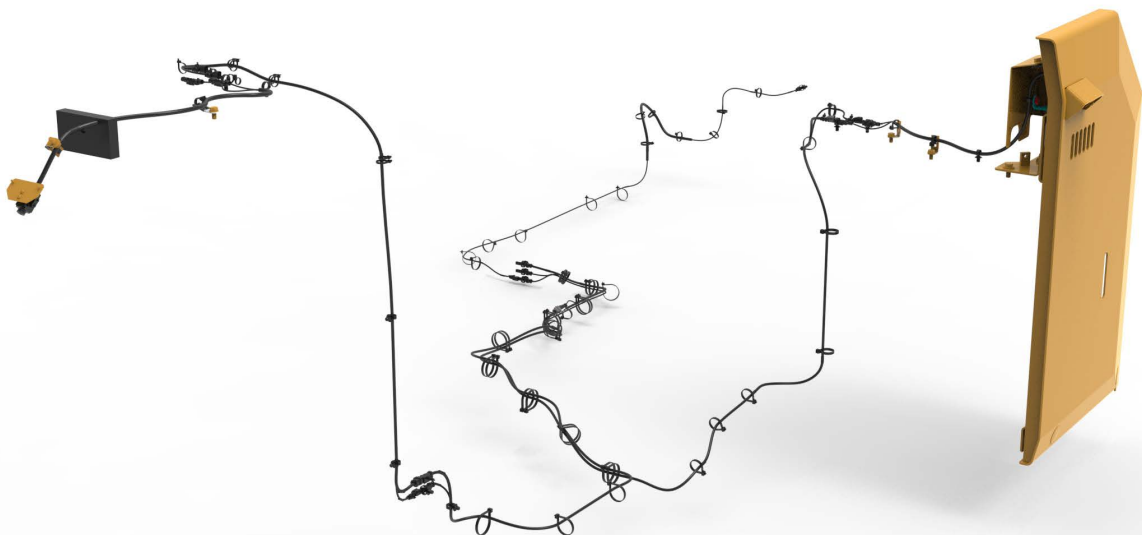
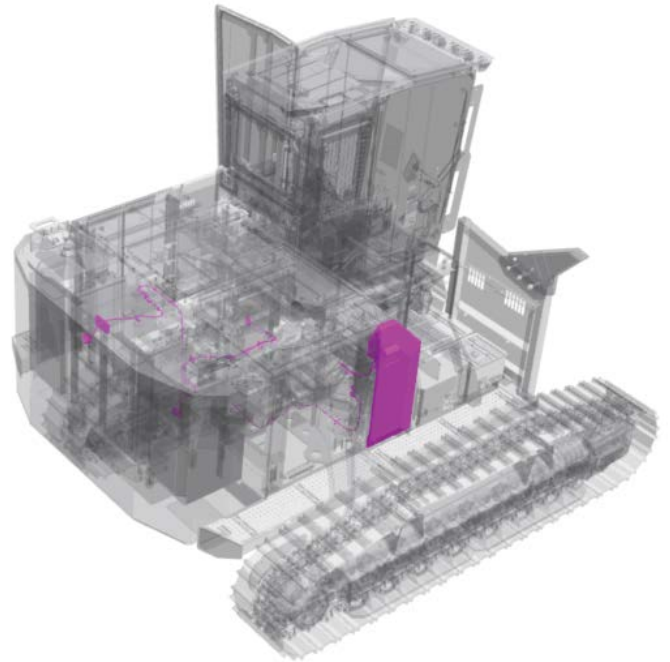




# ATTACHMENT

## CAMERA, REAR & RIGHT SIDE, 22" RISER

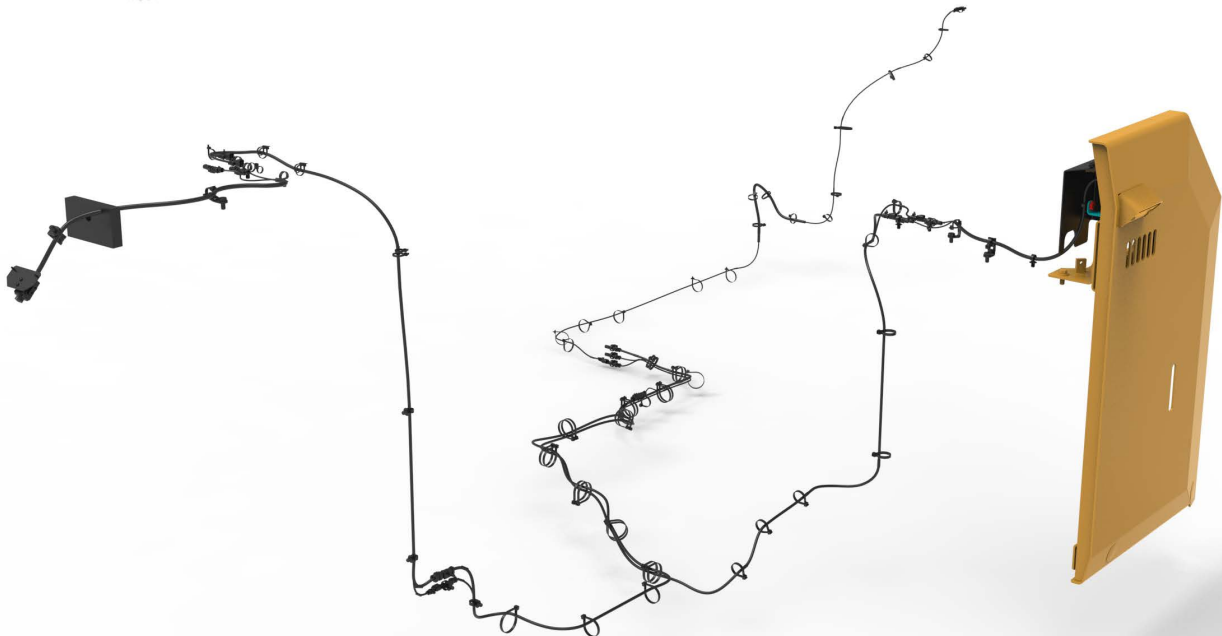
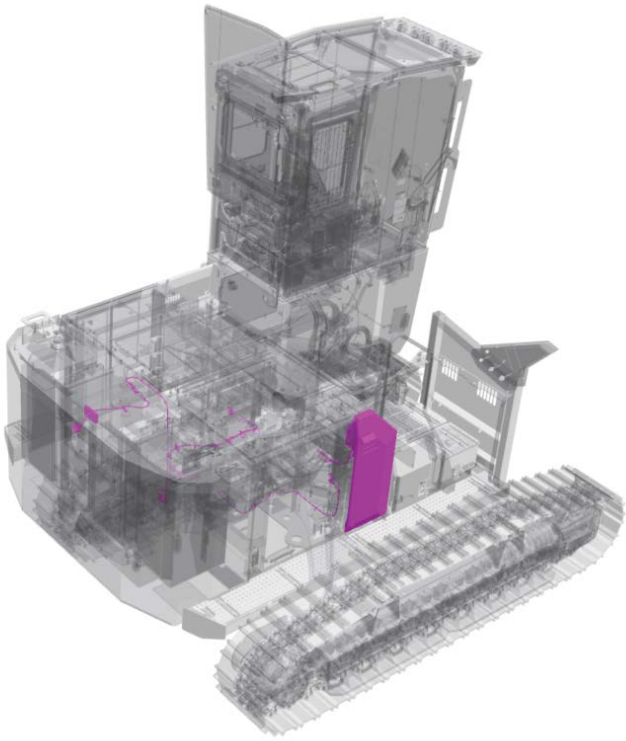
Camera to view the rear of the machine and the right hand side with 22" riser.  
Camera output can be seen on the machine display



# ATTACHMENT

## CAMERA, REAR & RIGHT SIDE 48" RISER, REAR ENTRY CAB

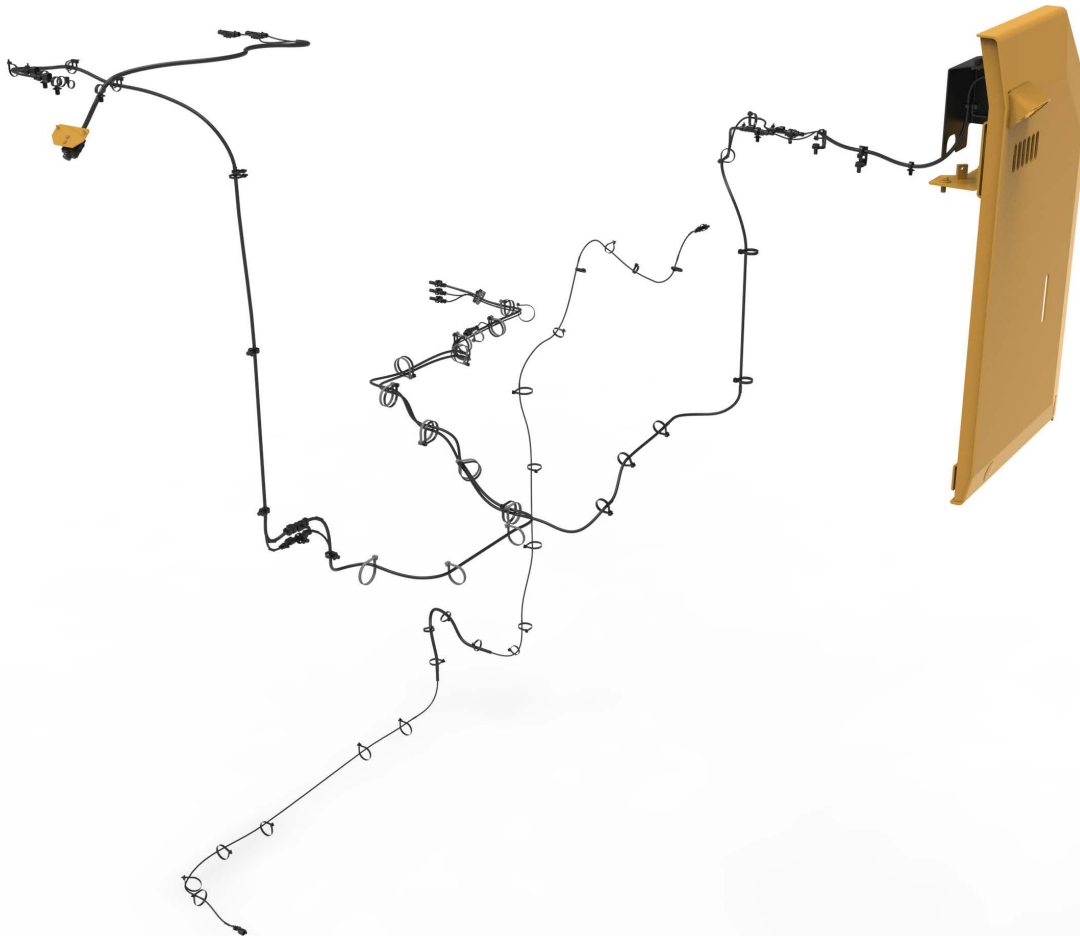
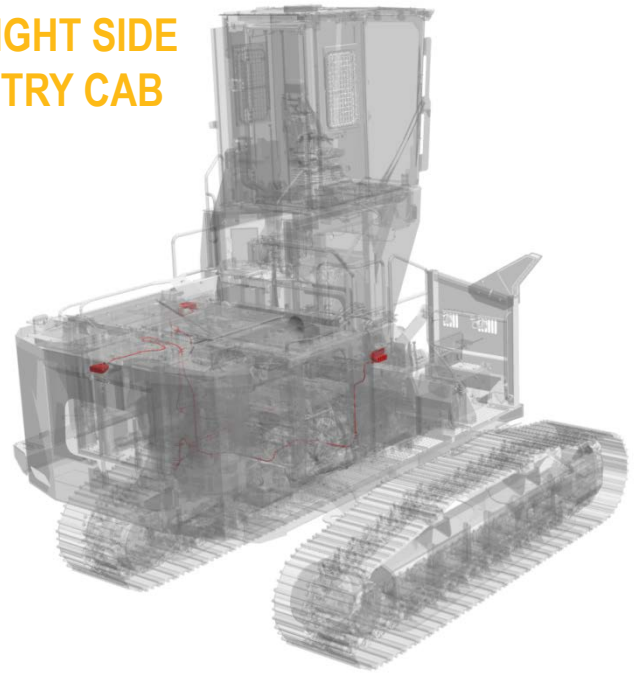
Camera to view the rear of the machine and the right hand side with fixed 48" riser in a rear entry cab. Camera output can be seen on the machine display.



Camera to view the rear of the machine and the right hand side with fixed 72" riser in a rear entry cab.  
Camera output can be seen on the machine display.

## ATTACHMENT

**CAMERA, REAR & RIGHT SIDE  
72" RISER, REAR ENTRY CAB**





Includes 4 LED lights at cab roof,  
1800 lumens each on the side entry cab.

## ATTACHMENT

### LIGHTS, 4, SIDE ENTRY CAB FRONT

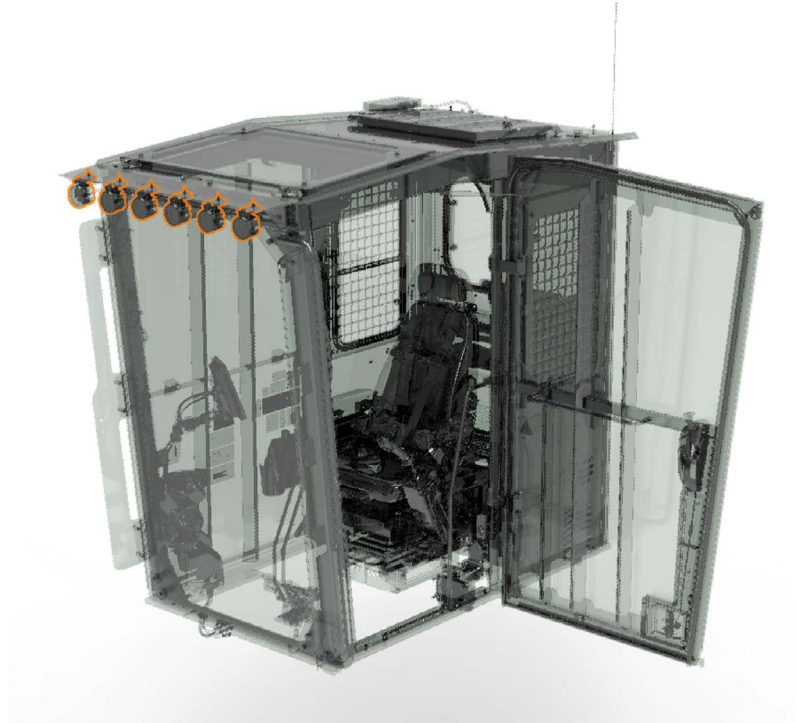


Only for use with:  
general forestry machine or log loader forestry machine and side entry cab.

# ATTACHMENT

## LIGHTS, 6, SIDE ENTRY CAB FRONT

Includes 6 LED lights at cab roof,  
1800 lumens each on the side entry cab



Only for use with:  
General forestry machine or log loader forestry machine and side entry cab

Only for use with: log loader forestry machine and rear entry cab.



Includes 4 LED lights at cab roof,  
1800 lumens each on the rear entry cab.

## ATTACHMENT

LIGHTS, 4,  
REAR ENTRY CAB, FRONT



Only for use with: log loader forestry machine and rear entry cab.



**ATTACHMENT**  
**LIGHTS, 6,**  
**REAR ENTRY CAB FRONT**

Includes 6 LED lights at cab roof,  
1800 lumens each on the side entry cab.

# ATTACHMENT

## LIGHTS, 1, SIDE ENTRY CAB, REAR, ADDITION

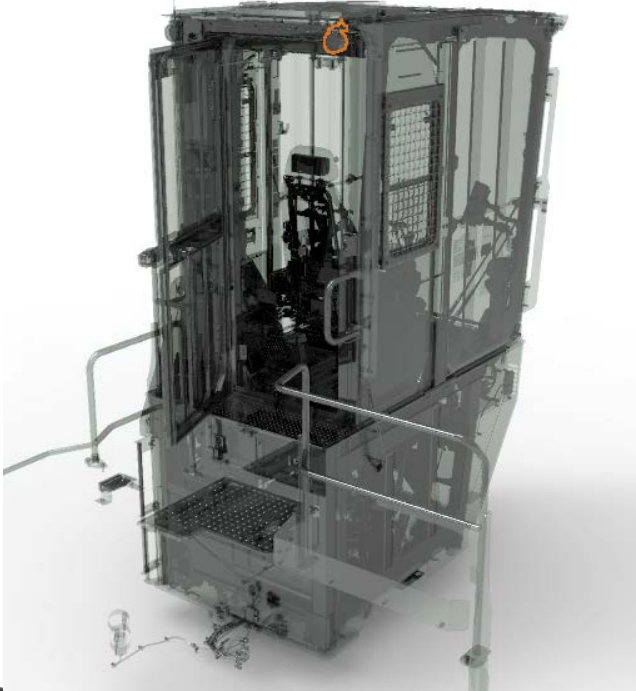
Includes 1 additional LED light on rear left side of cab roof, for a total of 2 LED lights on rear of cab. 1800 lumens each. Lights can be positioned and angled.



Includes 1 additional LED light on rear left side of cab roof, for a total of 2 LED lights on rear of cab 1800 lumens each. Only for use with rear entry cab

# ATTACHMENT

LIGHTS, 1,  
REAR ENTRY CAB, REAR,







## ATTACHMENT

### LIGHTS WORKING, TILT RISER, LEFT SIDE

Includes 1 additional outside facing LED light on 48" cab riser, 1800 lumens.

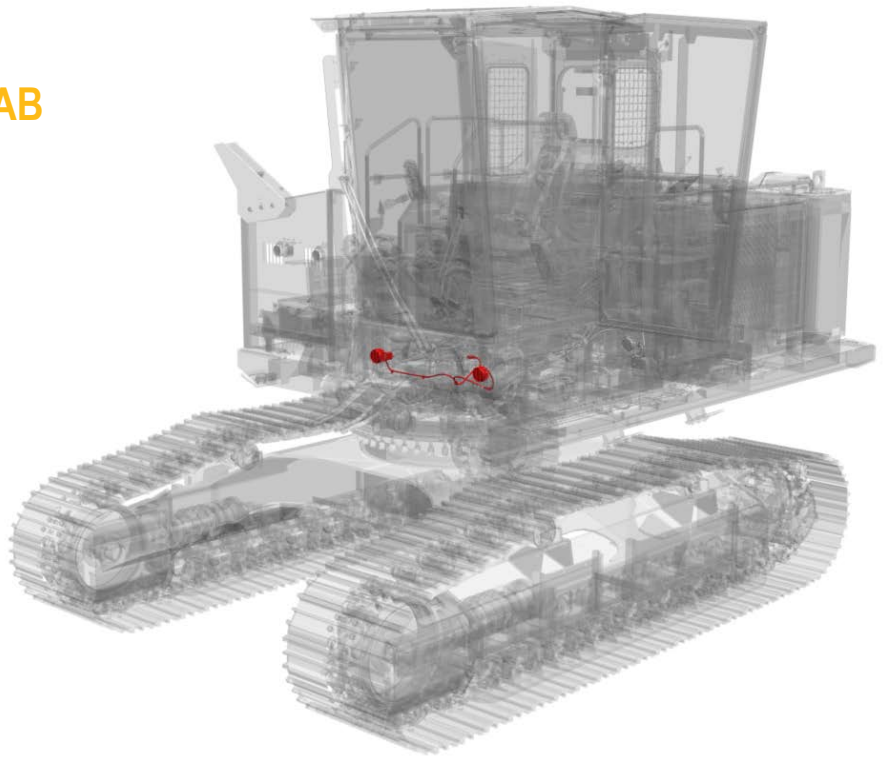
Only for use with  
tilt riser, side entry cab,  
1.2m (48") bolted, tilt riser,  
rear entry cab, 1.2m (48"), easy lock Only  
for use with  
side entry cab



# ATTACHMENT

## LIGHTS, 2 22" RISER, SIDE ENTRY CAB

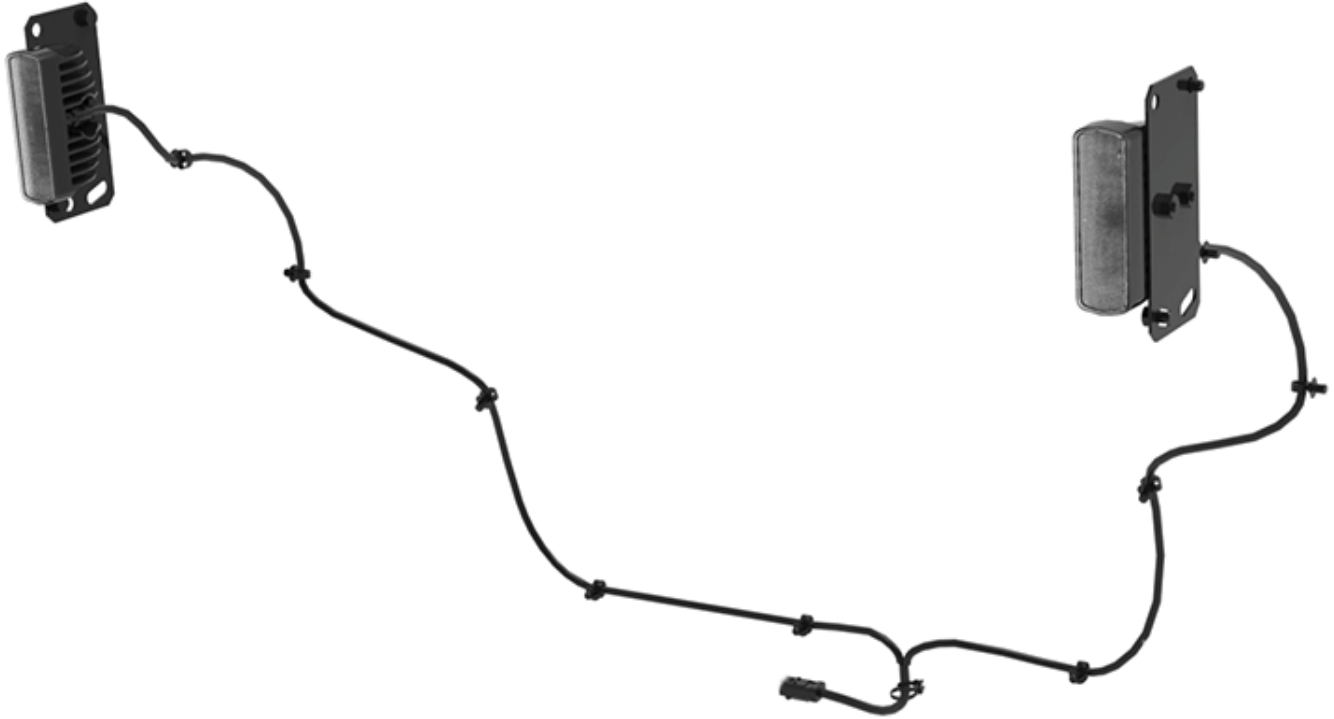
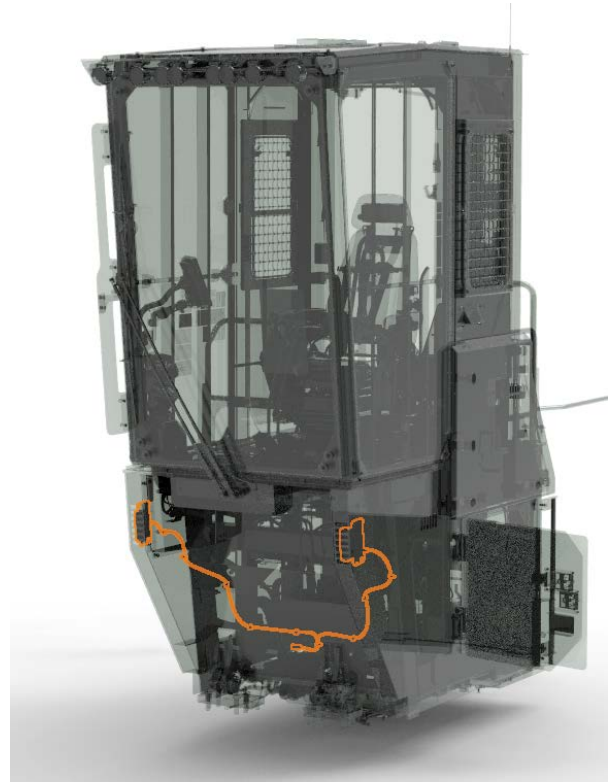
Includes 2 additional forward facing LED light on the 22" cab riser. These lights are 1800 lumens each. Only for use with side entry cab.



# ATTACHMENT

## LIGHTS, 2, 48" RISER, REAR ENTRY CAB

Includes 2 additional forward facing LED lights on 48" cab riser, 1800 lumens each.  
Only for use with: Rear entry cab.

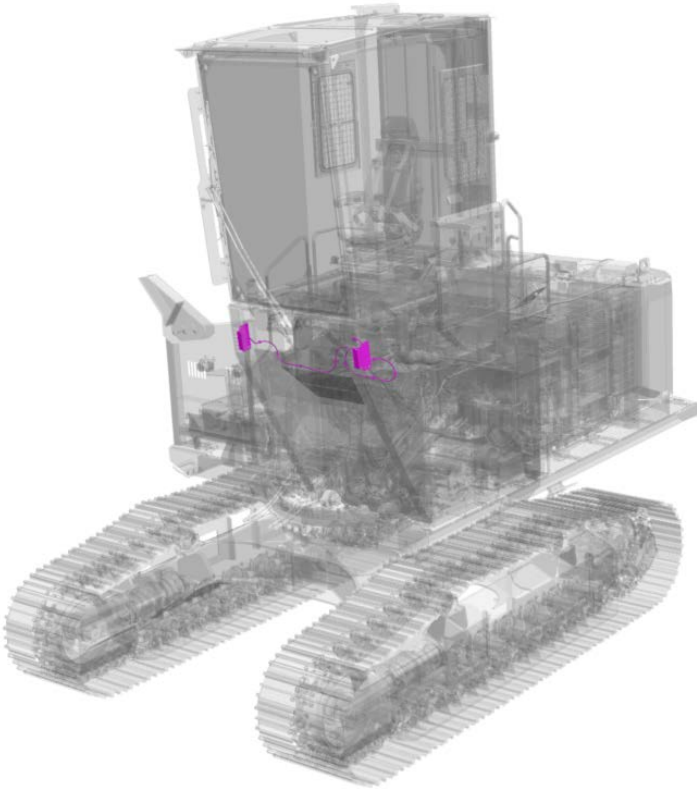




# ATTACHMENT

## LIGHTS, 2, 72" RISER, REAR ENTRY CAB,

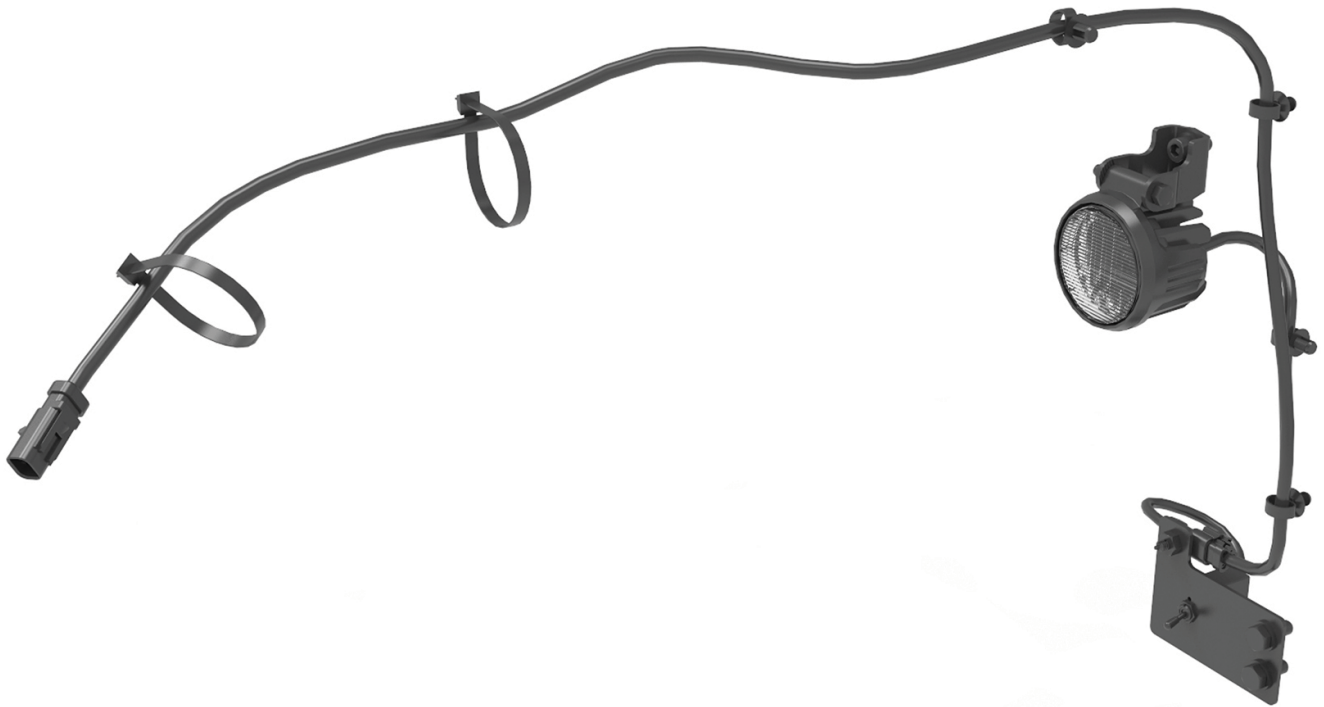
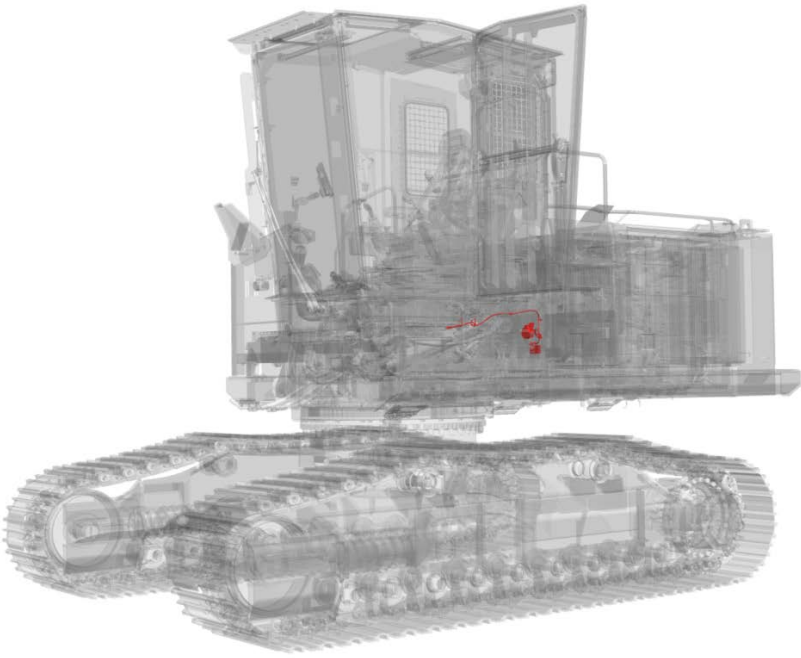
Includes 2 additional forward facing LED lights on 72" cab riser, 1800 lumens each.  
Only for use with: Rear entry cab



# ATTACHMENT

## LIGHT, 1 ADDITIONAL 22" BOLTED RISER, SIDE ENTRY CAB

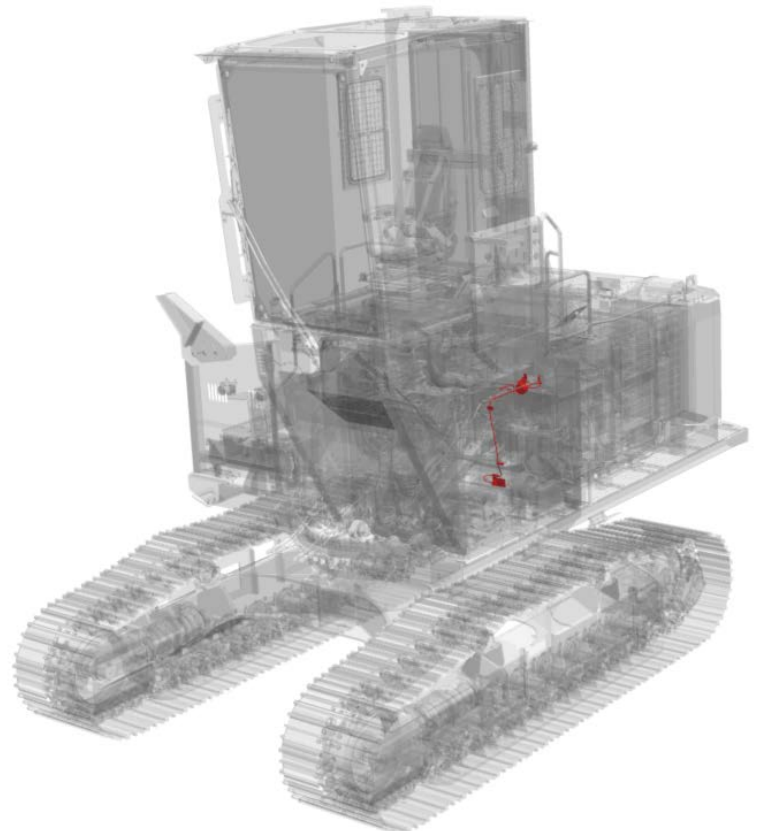
Includes 1 additional LED service light located inside the 22" cab riser, 1800 lumens, and activation switch. Only for use with tilt riser, side entry cab,



This is an additional service light located inside the 48"/72" cab riser with easy lock. It includes activation switch and is 1800 lumens.

## ATTACHMENT

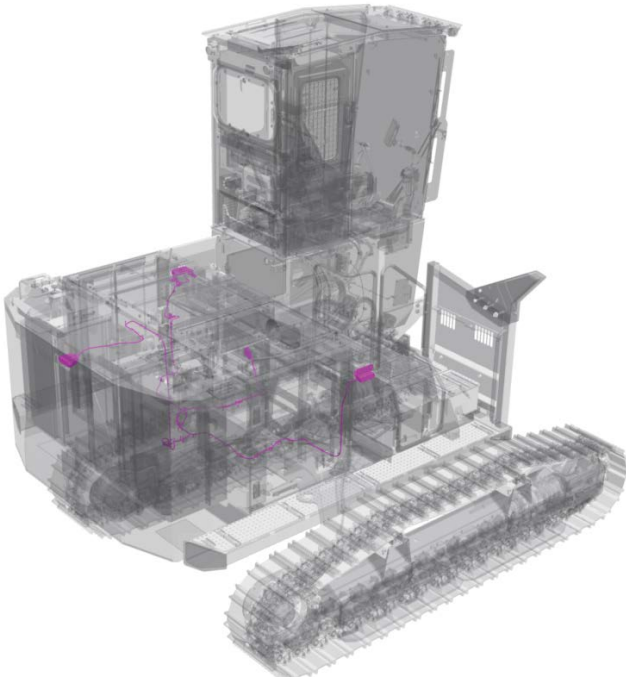
LIGHTS, 1 ADDITIONAL  
48" / 72" EASY LOCK RISER, REAR ENTRY CAB



# ATTACHMENT

## LIGHTS, SURROUND, ADDITIONAL

Includes 3 additional LED working lights on the machine, 1800 lumens each. One light on left side of machine, one on right side, and one on counterweight. These three light help illuminate working areas all around the machine for better visibility and safety.

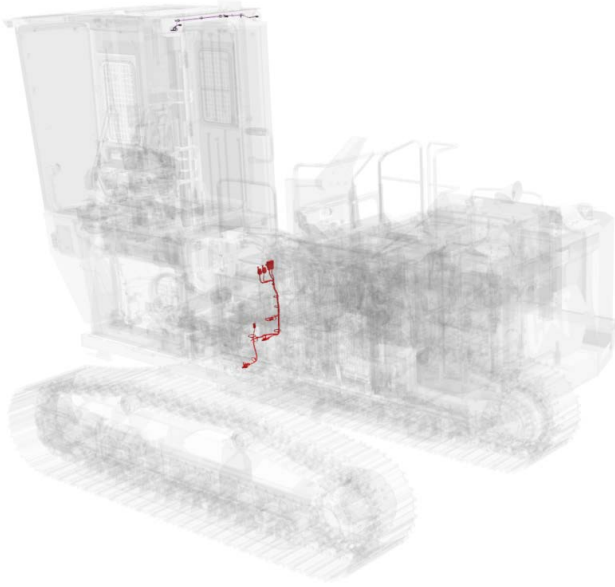




This is the wiring for the relays helps program through the cab monitor. The functionalities like, 4 joystick buttons to turn ON / OFF, Control 3rd party devices (CB radio, VHF radio, auxiliary or beacon lights). The relays can manage current up to 5A (2 relays) and 13A (2 relays).

## ATTACHMENT

### WIRING, AUXILLARY RELAY

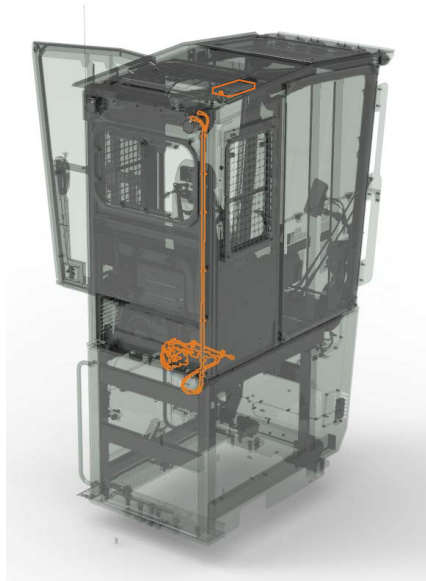


# PRODUCT LINK™

Product Link enables the remote transmission of information about the location, operation, and condition of your equipment. Efficiently and effectively monitor the performance of your assets to help keep your jobs on schedule, maintain equipment condition, and reduce the costs of owning and operating your fleet. Availability varies by country.

please reference <https://Dealer.cat.com/PL/Certification> for certified countries. Please contact your Caterpillar marketing representative with questions.

Product Link Elite series PL083 uses cellular or satellite network to transmit location, utilization and health information for viewing in Product Link user applications. PLE will communicate over cellular whenever available. For use in areas with poor or no cellular coverage.



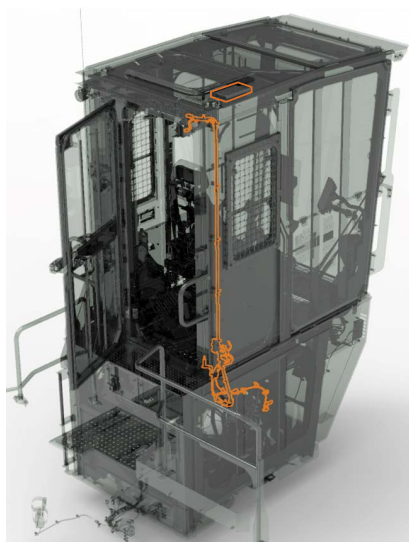
## ATTACHMENT

### PRODUCT LINK™ CELLULAR /SATELLITE, PL 083, SIDE ENTRY CAB

## ATTACHMENT

### WIRING PRODUCT LINK™ SIDE ENTRY CAB

Side entry cab wiring connection for the product link PL083 with Cellular or Satellite capability.



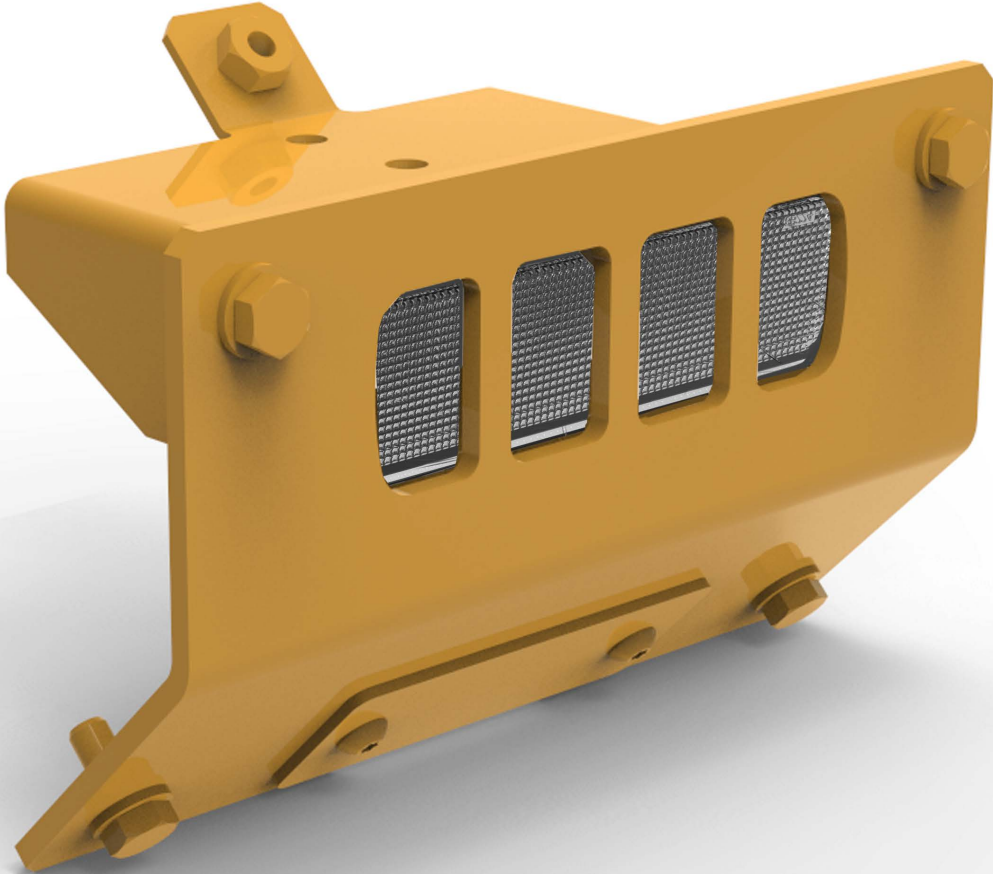
## ATTACHMENT

### WIRING PRODUCT LINK™ REAR ENTRY CAB

Rear entry cab wiring connection for the product link PL083 with Cellular or Satellite capability.

# ATTACHMENT COVER, R CAMERA, W/ CTWT LIGHT

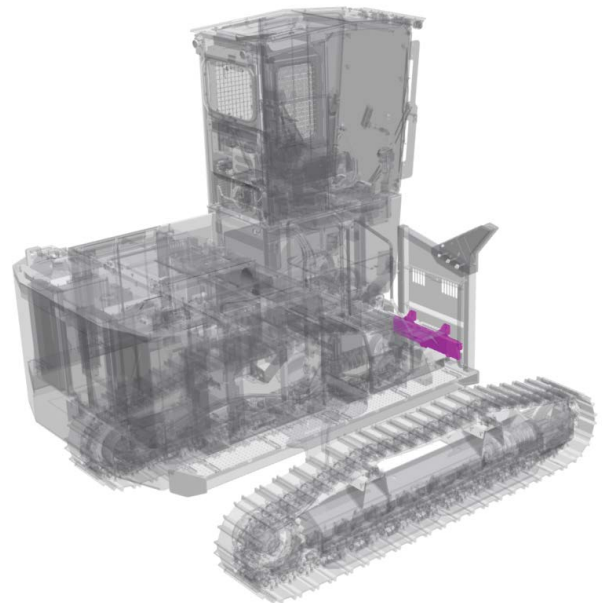
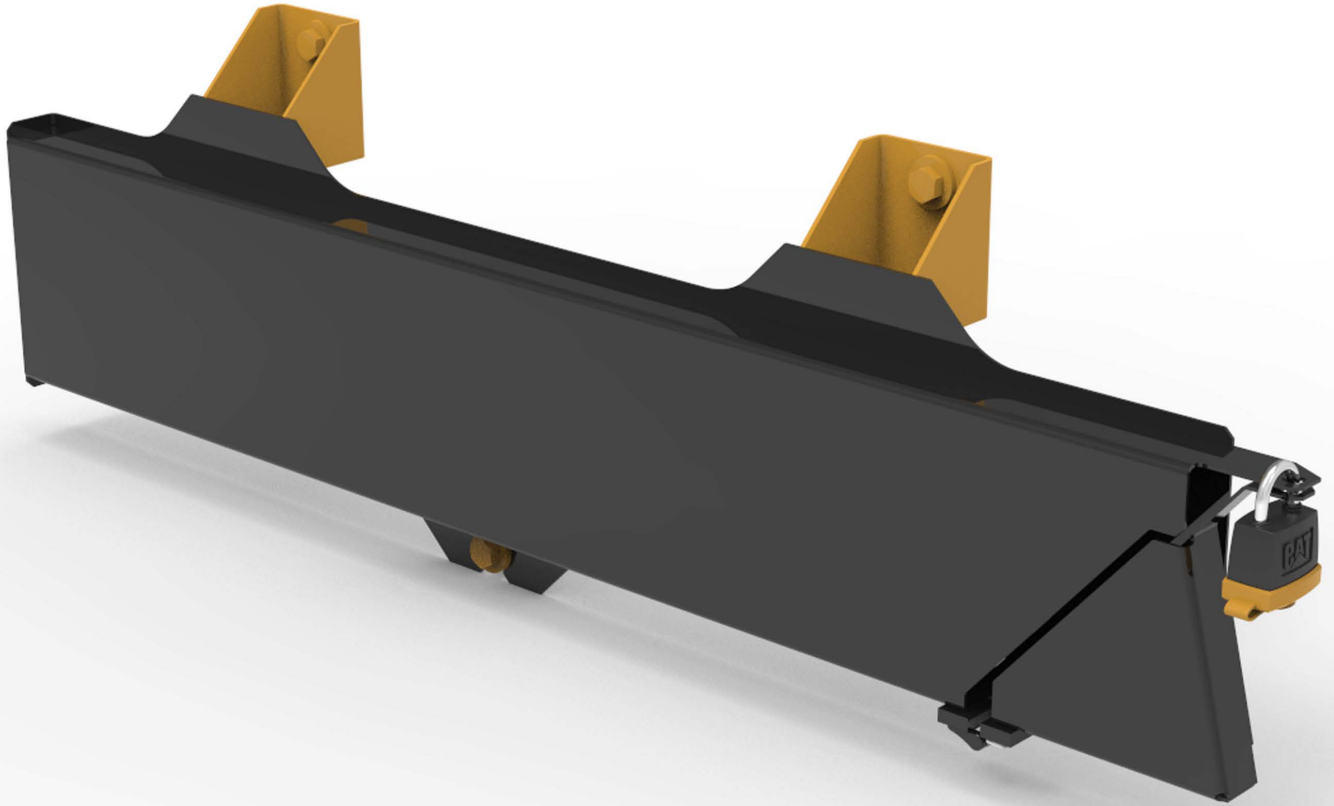
Protective cover for rear view  
camera on counterweight with light



# ATTACHMENT

## SAW BOX STORAGE, 35"

A dedicated storage box for 35" saw bars. This storage box is located on the central platform.

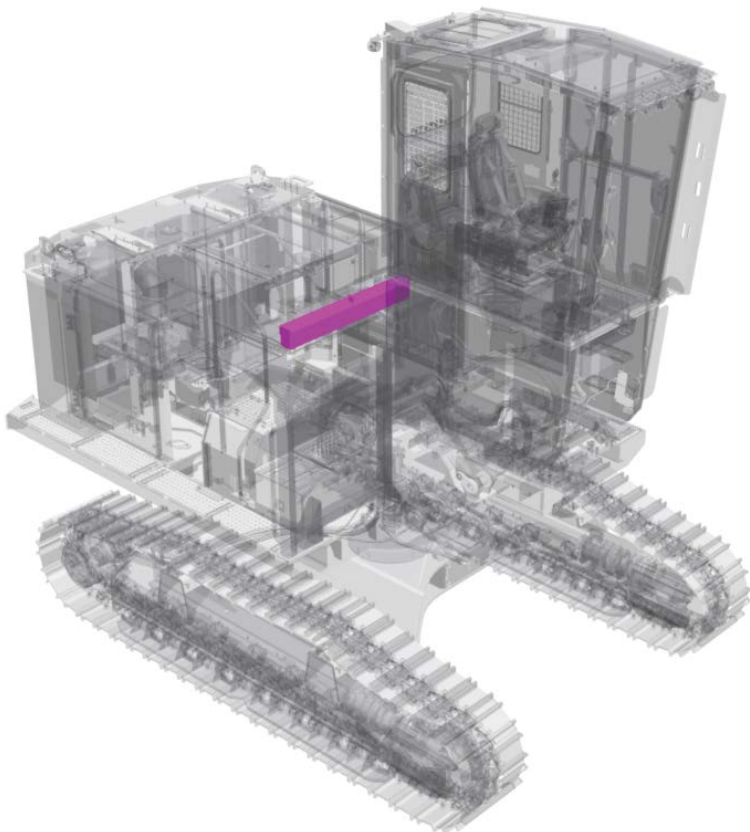
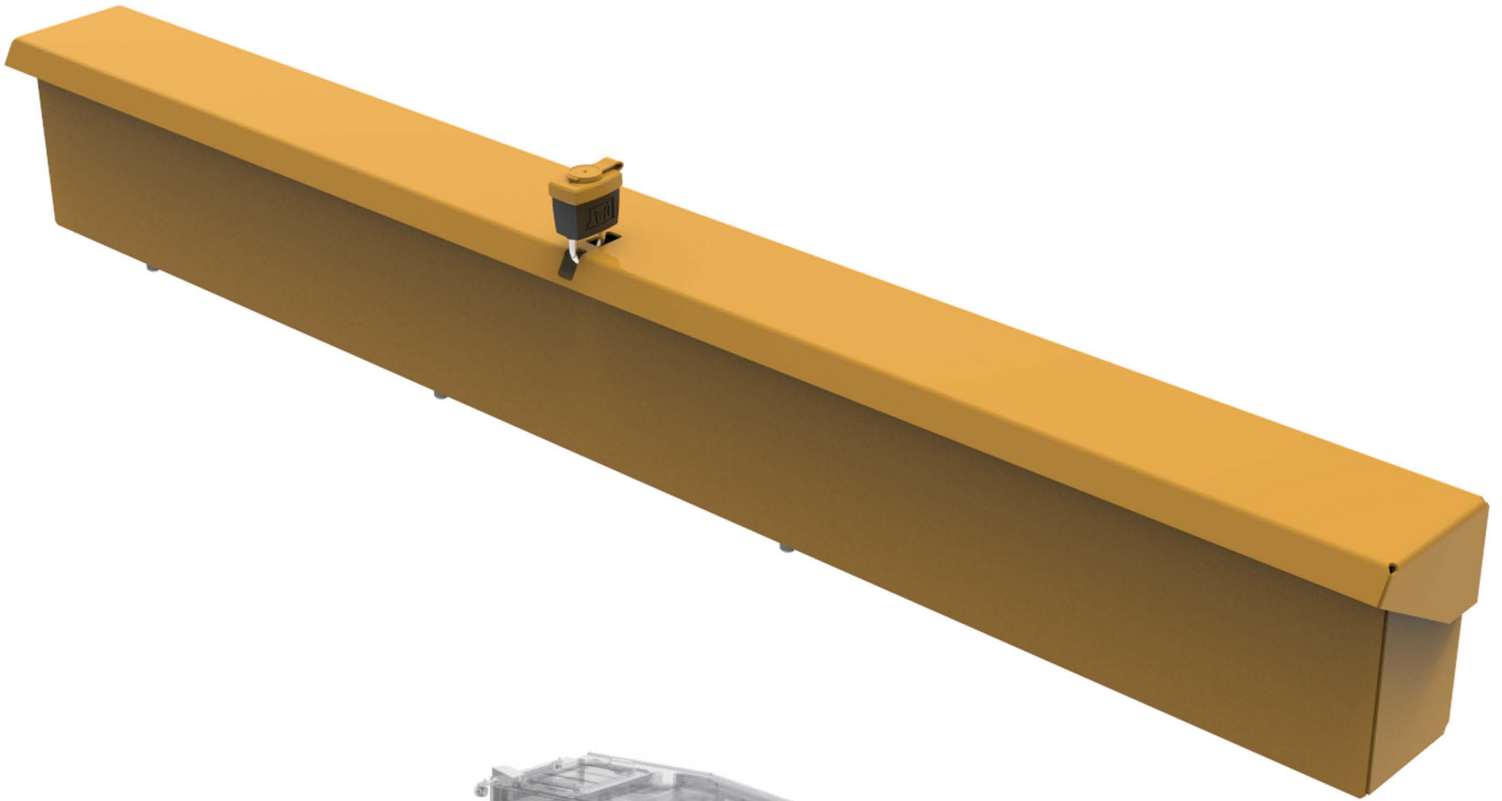




# ATTACHMENT

## SAW BOX STORAGE, 50"

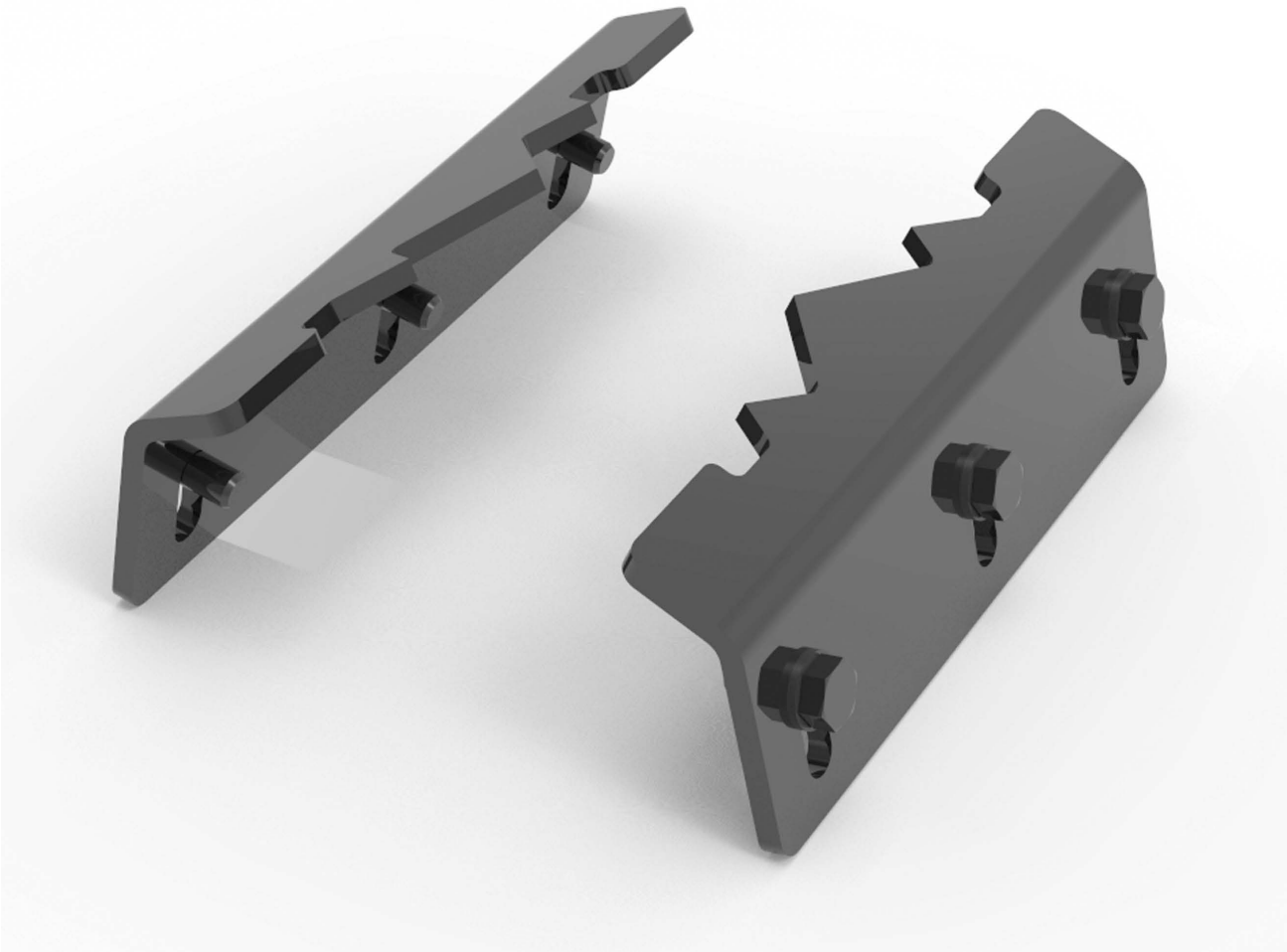
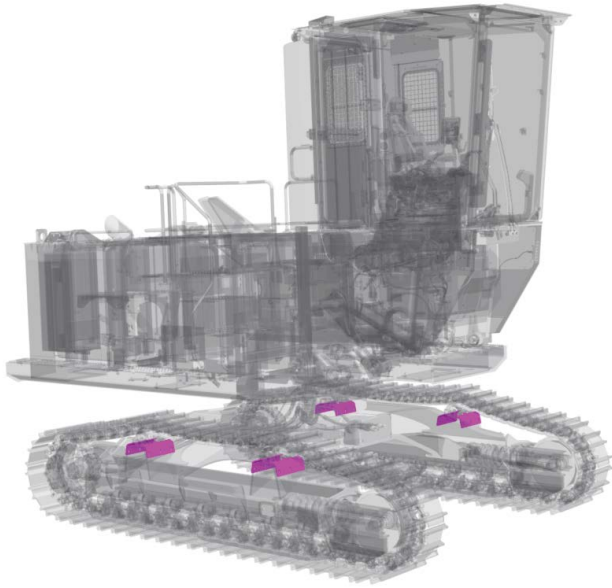
A dedicated storage box for 50" saw bars. This storage box is located on the central platform.



# ATTACHMENT

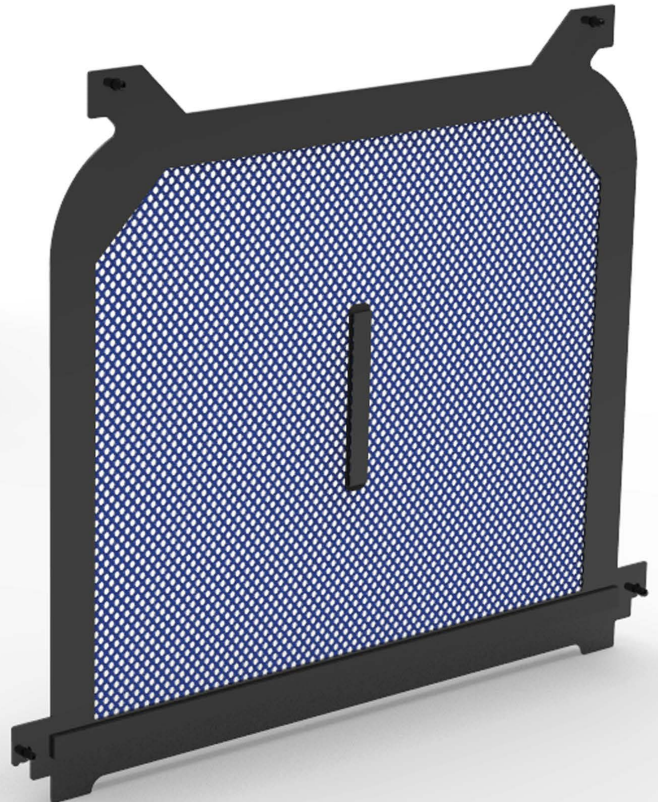
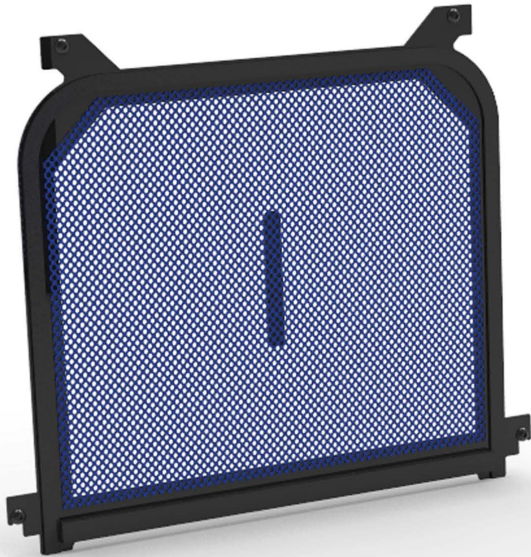
## SCRAPER, CARRIER ROLLER

Scrapers mounted on either side of the track carrier rollers for shedding of mud and debris. The scrapers help self cleaning of the rollers that are otherwise difficult to clean.



The bug screen prevents bugs from entering the cab when the rear windows are opened for ventilation.

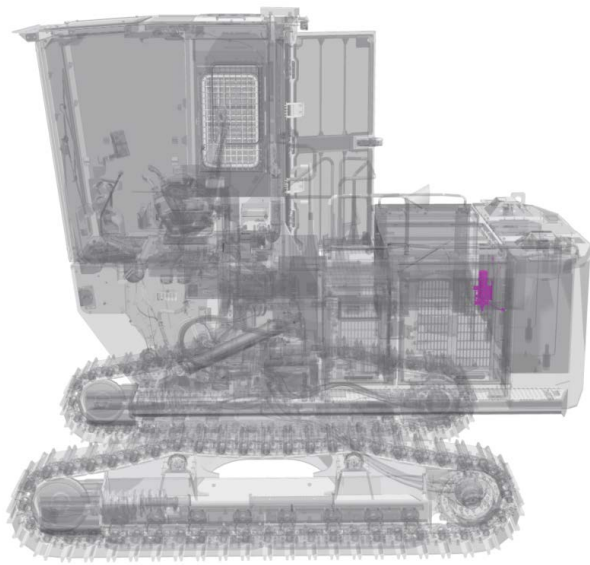
## ATTACHMENT BUG SCREEN



# ATTACHMENT

## STARTING AID, ETHER

Optional ether assist package  
for cold temperature starting.





# ATTACHMENT

## BLOCK HEATER, 120V

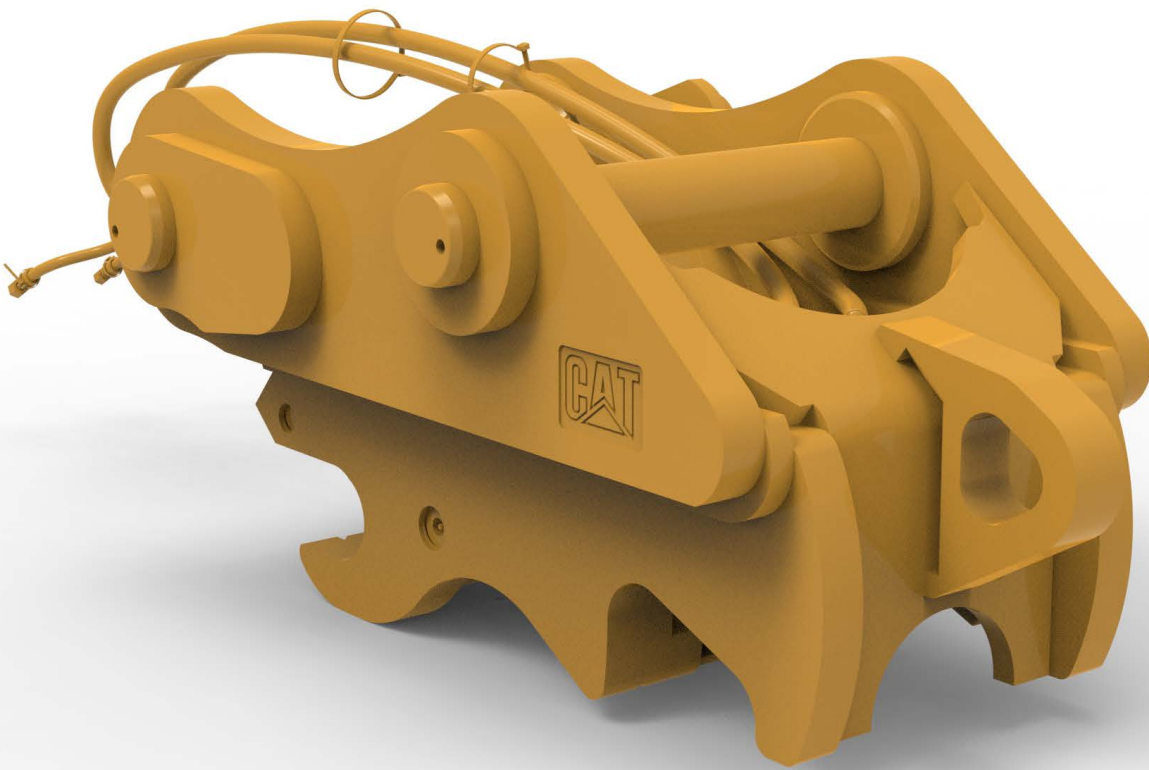
Starting kit, block heater,  
120V for engine



This coupler is for use when not ordering an installed bucket. This includes pin grabber coupler. No pins.

## ATTACHMENT

### COUPLER, PIN GRABBER W/O PINS



The 558 has two choices of counterweights.  
The 5.1 tonne counterweight is mainly for  
general forestry application.

## **ATTACHMENT**

### **COUNTERWEIGHT.**

**11023 Lb / 5.1 metric Tonne**



## **ATTACHMENT**

### **COUNTERWEIGHT**

**13448 Lb / 6.1 metric Tonne**

The second choice for counterweight is  
6.1 tonne and is suitable for log loading  
application.

# **ATTACHMENT**

## **STORAGE PROTECTION (EXPORT)**

---

Machines from the factory have been sprayed with corrosion protection coating. This product is added while shipping and for extended storage periods. This product is power washed with soap prior to shipment to the customer.

# **ATTACHMENT**

## **STORAGE PROTECTION FROM COGON GRASS (EXPORT)**

---

ADSD-N machine is sprayed with a coating to avoid the adhesion of Cogon-grass which is listed on invasive alien grasses in US. This is additional cost to spray.





## WORK TOOLS

### GRAPPLE, GLL 55, LOG LOADING

This has a maximum opening of 55 inches (1397mm) and a minimum of 5 inches (127mm). The weight is 2860 Lb (1297Kg).

This grapple can be used with 538, 548, 558, 568

## WORK TOOLS

### GRAPPLE, GLL 60, LOG LOADING

This has a maximum opening of 60 inches (1254mm) and a minimum of 5 inches (127mm). The weight is 3060 Lb (1388Kg).

This grapple can be used with 548, 558, 568



Caterpillar currently offers two different heel variations for Log Loaders, one heel that is for use on under/under Log Loader configurations and one heel that is used on over/under Log Loader configurations.

In the Under / Under configuration the tool or heel cylinder is located on the bottom of the stick and the tool or heel cylinder is located on the top side of the stick in an over/under configuration.

Cylinder and Connecting Lines available from Antares

## WORK TOOLS

### HEEL UNDER / UNDER, FABRICATION



The under / under configuration is primarily used for truck loading and shovel loading applications, as well as with log loader configurations that utilize heel and processor installations. The over / under heel configuration is primarily used in millyard application to achieve higher stacking height for inventory log decks or infeed areas. Gaining decking height in log yard applications can be a strong advantage in use of yard space, reducing the distance and time required for reclaiming logs from inventory and maximizing log inventory capability.

## WORK TOOLS

### HEEL UNDER / UNDER



# WORK TOOLS

## HEEL OVER / UNDER

The over / under heel configuration is primarily used in millyard application to achieve higher stacking heights for inventory log decks or infeed areas. Gaining decking height in log yards can be a strong advantage of use of the yard space, reducing the distance and time required for reclaiming logs from inventory and maximizing log inventory capability.

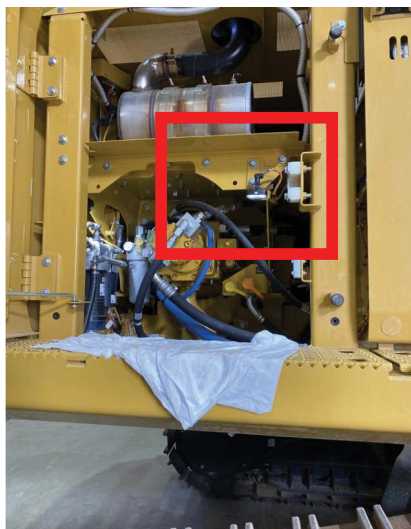
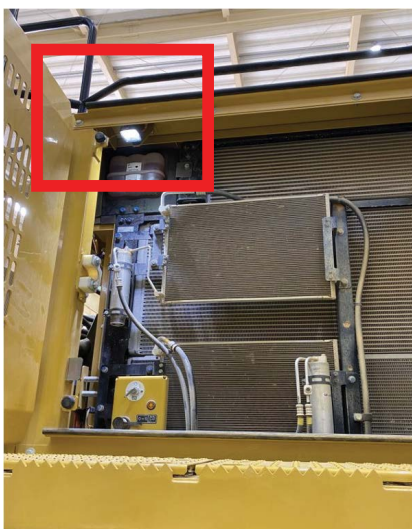
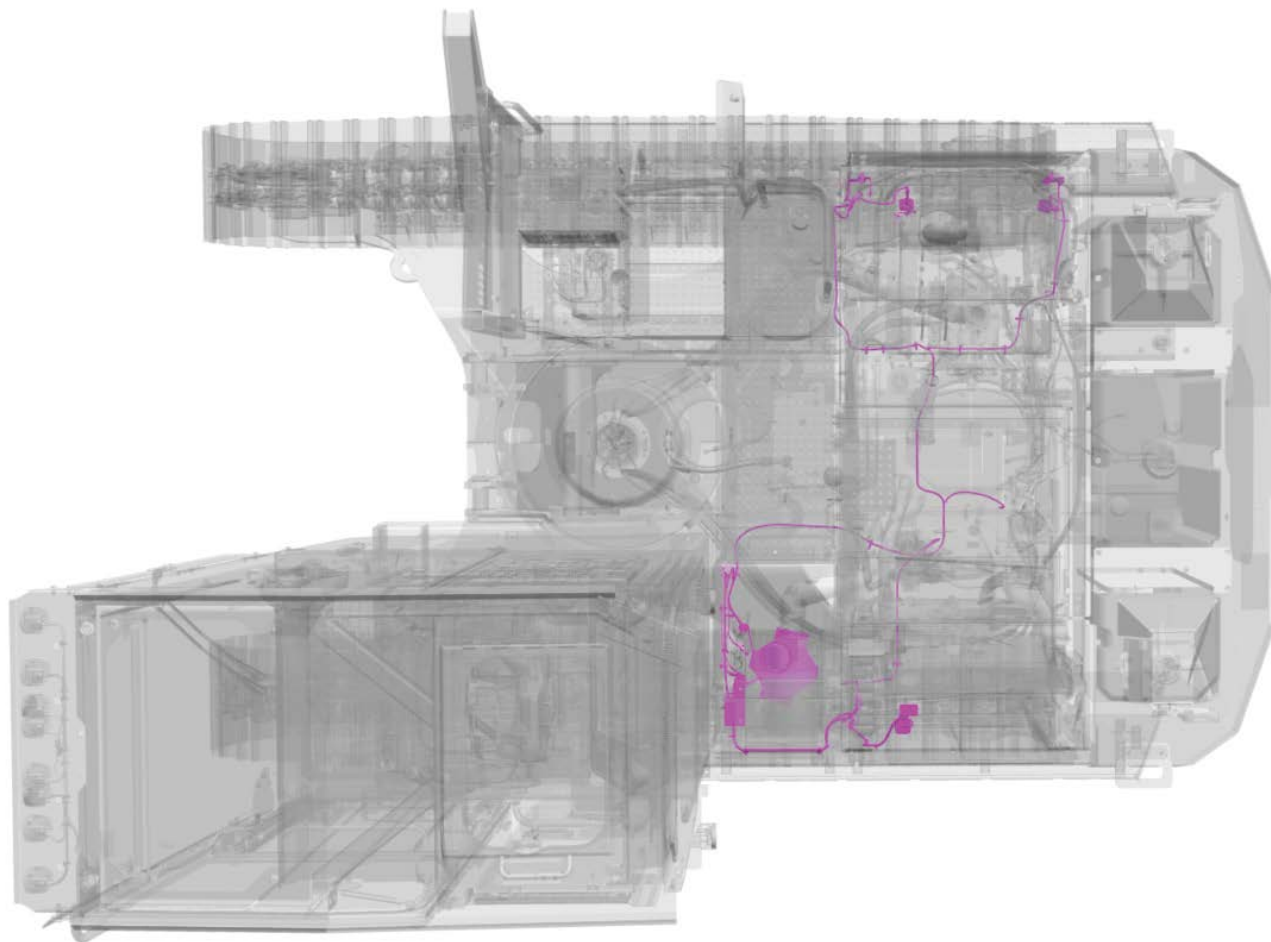




# AFTERMARKET KITS

## INSPECTION LIGHT KIT

Inspection lighting kit provides additional lights in the cooling package, hydraulic pump, and electrical compartment for improved safety and visibility in low light conditions.  
Approximate installation time: 4-5 hours



# AFTERMARKET KITS

## SIGNAL CONVERTOR, SIDE ENTRY CAB

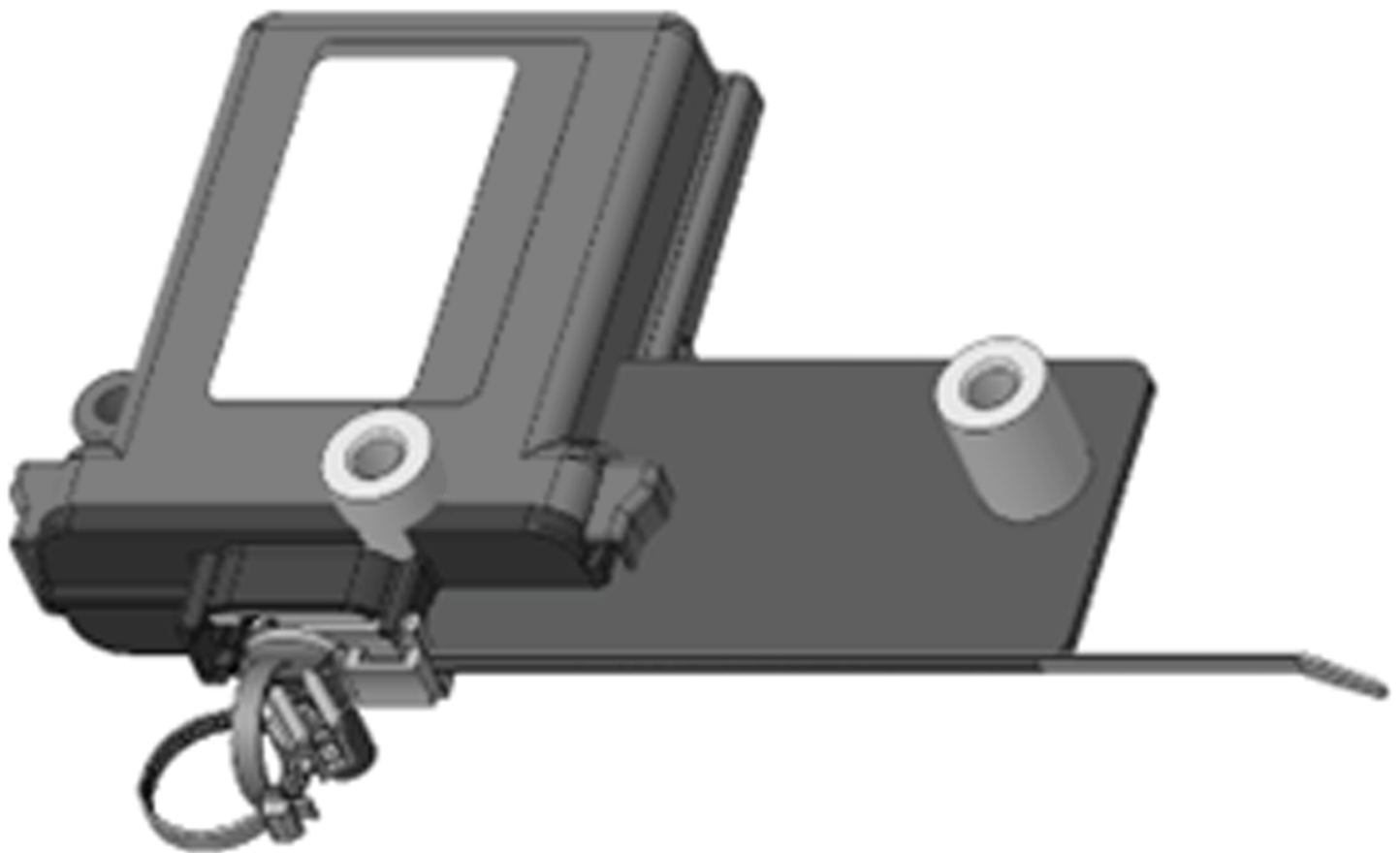
---

This bracket holds the signal convertor which enables the processor head to communicate with machine. This bracket is located behind the seat under the lunch box cover.

**INCLUDES:** List of part numbers including hoses, tubes, brackets, straps, cables, clips, hardware needed for proper installation.

**REQUIRES:** Factory-shipped machine, Side Entry Cab, installed with harvester arrangement.

Approximate installation time: 2-3 hours. Only for use with: 538, 548, 558, 568



# AFTERMARKET KITS

## SIGNAL CONVERTOR, REAR ENTRY CAB

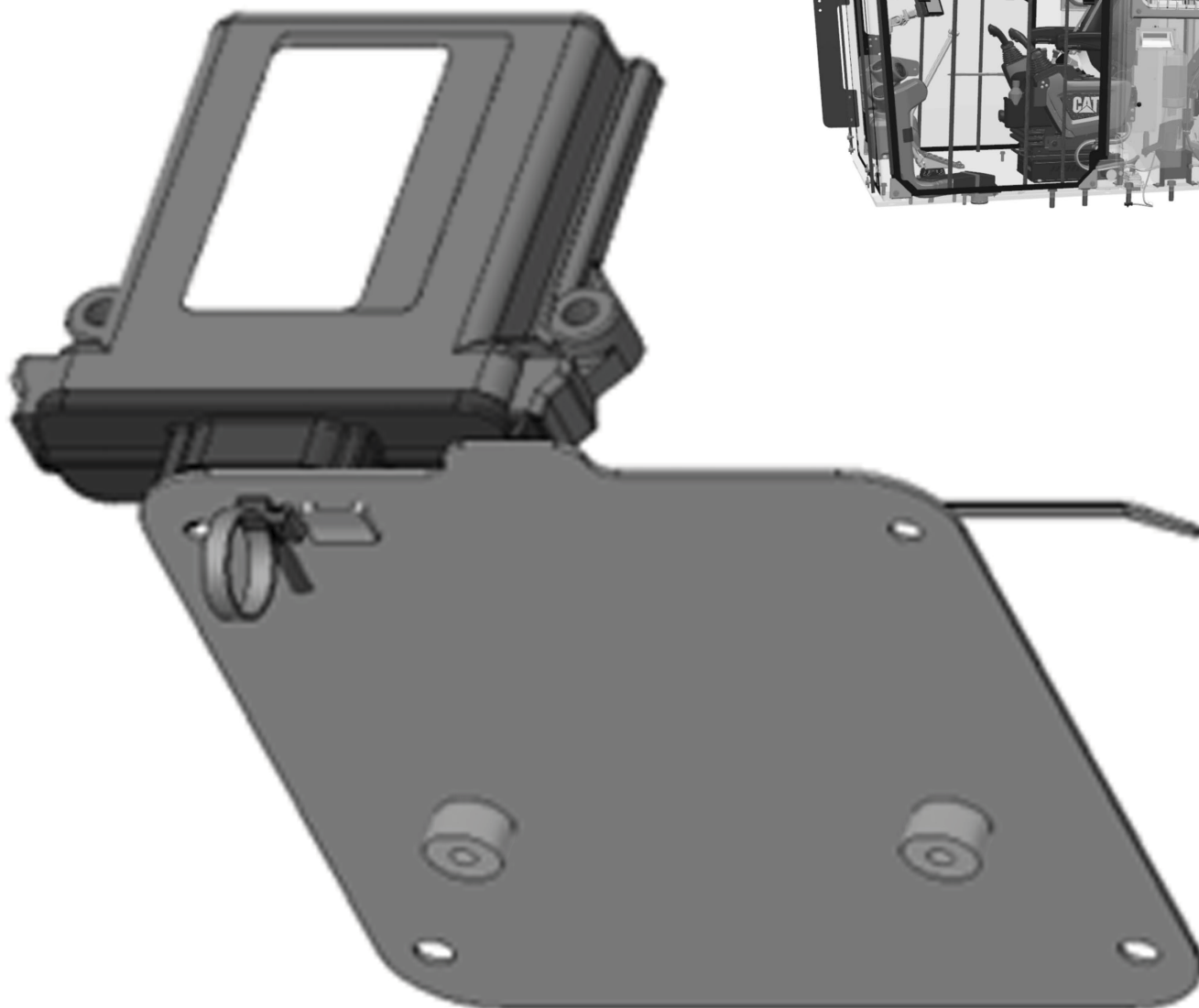
---

This bracket holds the signal convertor which enables the processor head to communicate with machine. This bracket is located behind the seat under the lunch box cover.

**INCLUDES:** List of part numbers including hoses, tubes, brackets, straps, cables, clips, hardware needed for proper installation.

**REQUIRES:** Factory-shipped machine, Rear Entry Cab (REC), installed with harvester arrangement.

Approximate installation time: 2-3 hours. Only for use with: 538, 548, 558, 568



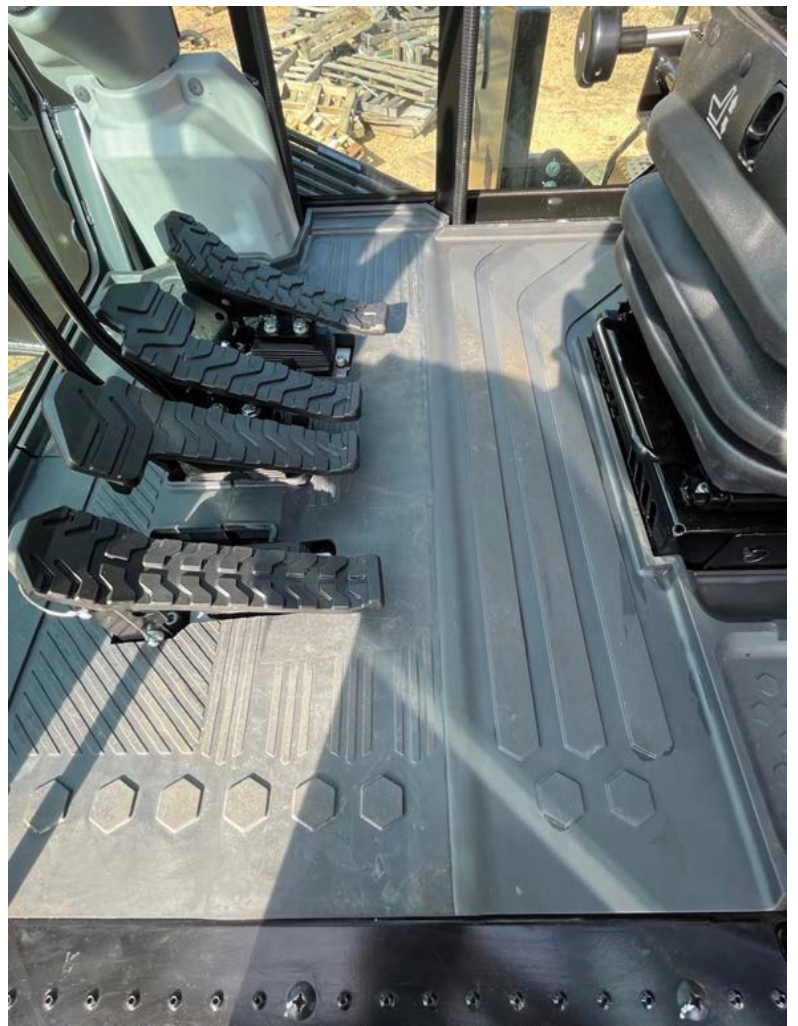
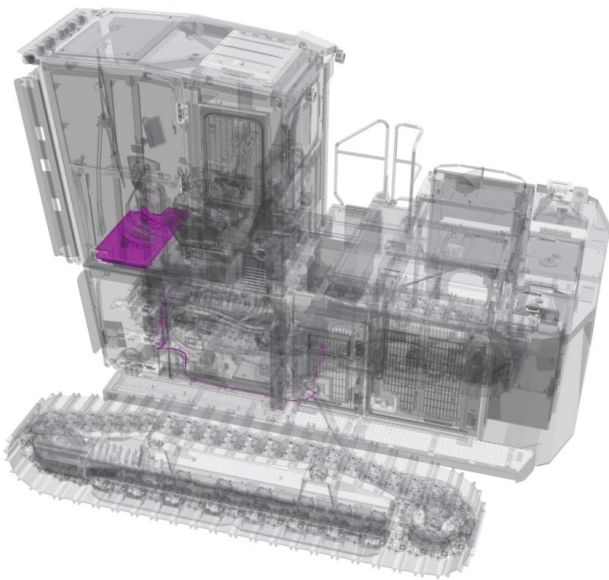


# AFTERMARKET KITS

## FOOT PEDAL SWING

---

This kit is utilized together with the optional software enabled attachment for customizable joystick controls. The foot pedal swing kit includes 2 auxillary pedals to be mounted on the cab floor to allow the machines swing to be controlled by foot pedals. The travel pedals are still available to use for machine travel. This kit utilized together with the option for the customizable joystick controls feature to allow assignment of various implement functions to the x-y axis of joysticks, as well as auxillary pedals. Customized joystick patterns, including forestry or knuckle boom style controls can be setup for selection along with standard ISO or excavator style controls for easily moving back and forth in the monitor depending on operator preference. Approximate installation time: 4-5 hours. Only for use with side entry 22" and 48" riser

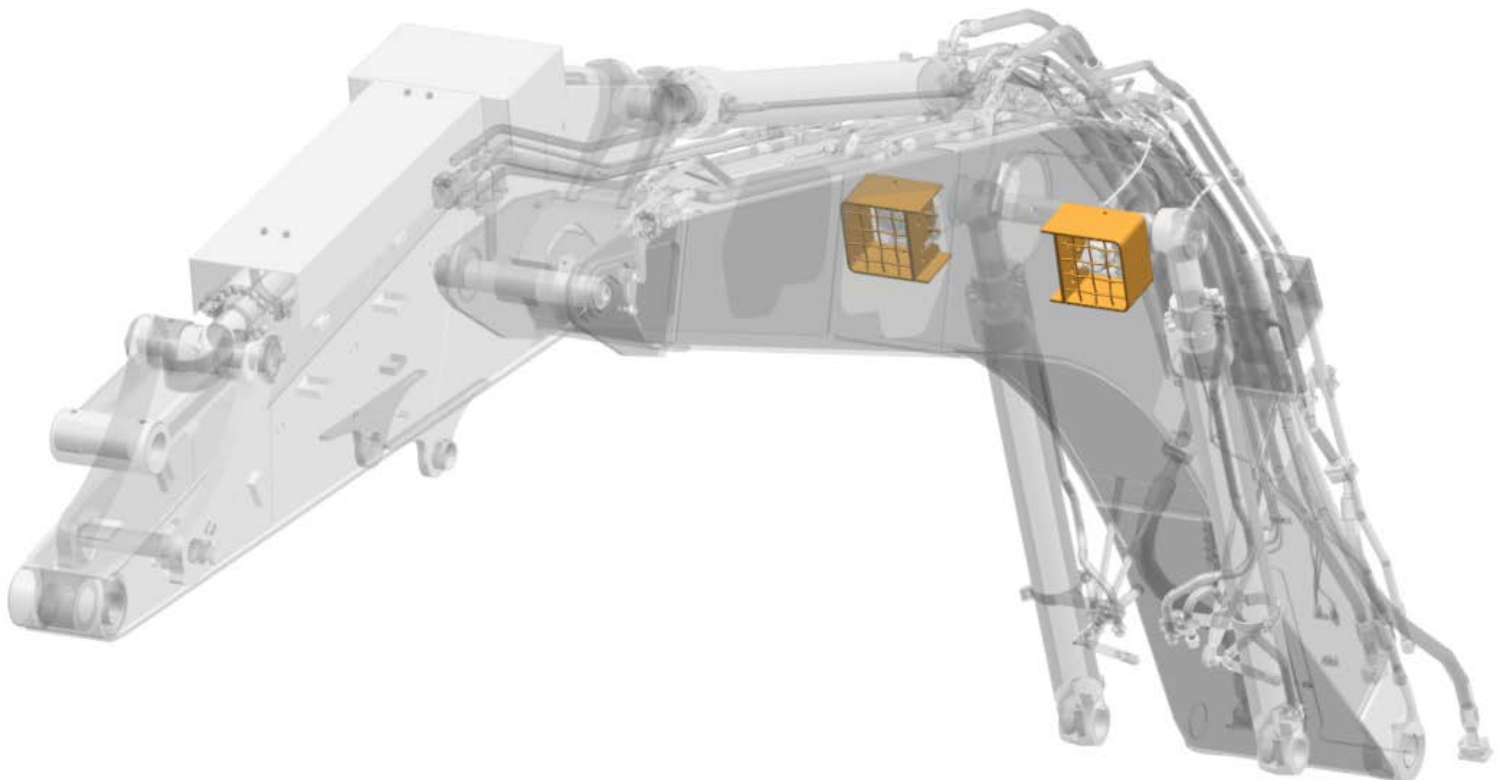
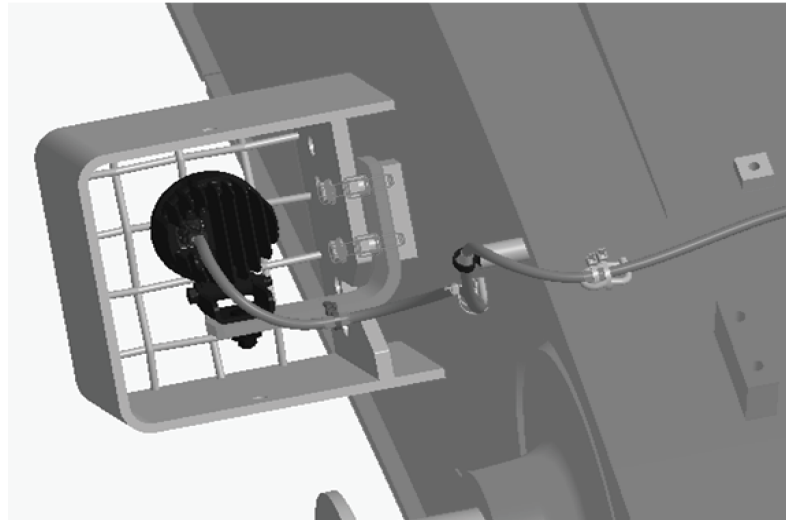




The boom light guards protects the boom lights from damage on roadbuilder configuration machines, this is beneficial for protecting the lights from impacts from tree limbs materials, as well as during machine transport. Approximate installation time: 1-2 hours only for use with: 538, 548, 558, 568

## AFTERMARKET KITS

### LIGHT GUARD

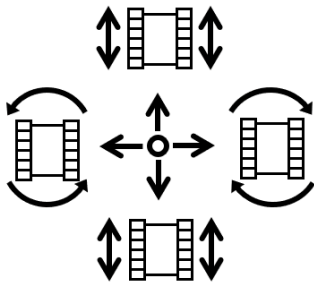


# SOFTWARE ENABLED ATTACHMENTS

## JOYSTICK STEER

The joystick Steer mode (JSS) is an optional feature which allows travel to be controlled by left hand joystick to increase operator comfort. Operator can select joystick steering when desired or use the standard travel pedals.

### LEFT JOYSTICK



Joystick steer mode active

If JSS is activated, travel pedal / lever will be cancelled.

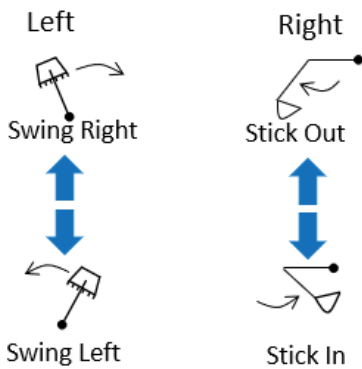
### RIGHT JOYSTICK



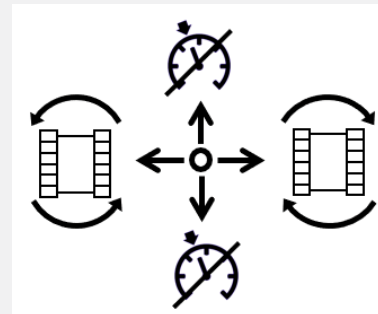
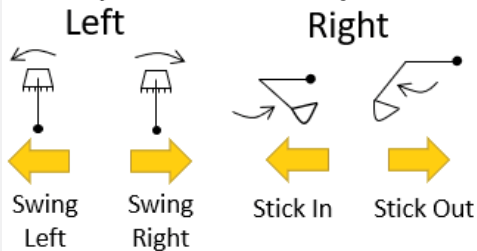
### Thumbwheel\*

\*Thumbwheels will be assigned for Left J/S operation when JSS mode is Active.

#### Vertical Slider Joystick



#### SVAB/ Horizontal Slider Joystick



The cruise control mode helps to keep the machine in motion forward or backward without constantly pressing on the joystick over longer distance of travel.

# SOFTWARE ENABLED ATTACHMENTS

## SWING ALARM

---

This safety feature turns on travel alarm during swing operation. This is an addition to the travel alarm which already exists on all machines.

The Swing alarm can be switched off using the cancel switch. The alarm can be re-activated after the operation is stopped. The machine detects the alarm for the travel and swing separately.



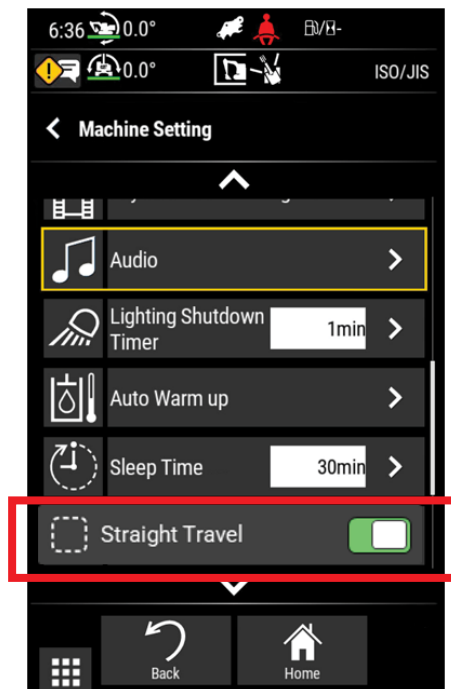
# SOFTWARE ENABLED ATTACHMENTS

## ADVANCED IMPLEMENT AND TOOL PRIORITY

This optional feature allows the ability to set advanced level priorities for implement control movements, as well as turning on and off straight travel configuration, through CAT electronic technician (ET), when installed.



Setting Straight Travel.  
The travel ON / OFF can be set up from the display. Shortcut / Joystick button can also be assigned for this function.

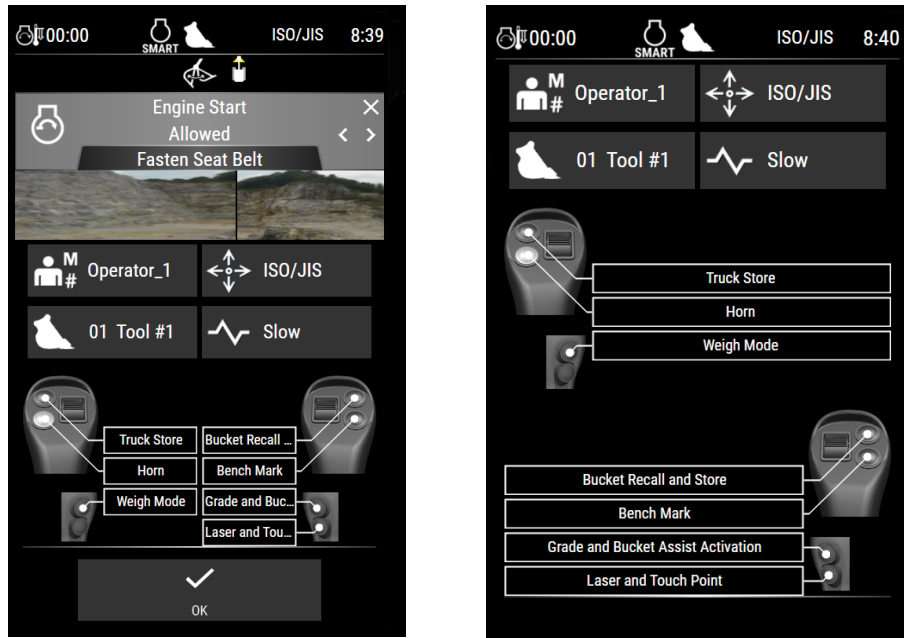




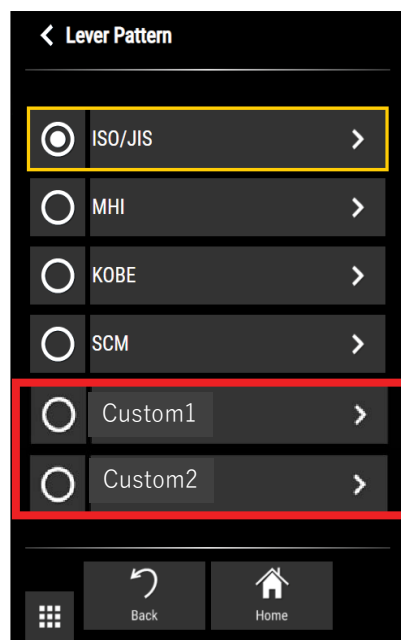
# SOFTWARE ENABLED ATTACHMENTS

## CUSTOM JOYSTICK

This optional feature allows the capability to setup customizable joystick patterns using CAT Electronic Technician (ET). Customized patterns can then be selected by the operator in the cab monitor, in addition to standard factory joystick patterns. When using customized control patterns, a special decal is to be placed in the cab locally to show what the new controls are assigned for.



Joysticks can be customized with advanced implements with programmable joystick lever patterns other than standard patterns like ISO/ JIIS, SCM etc.





## Customer Value Agreements

Every piece of Cat equipment is designed and built to provide maximum productivity and operating economy throughout its working life. Your Cat dealer can help you maintain that built-in value through a Customer Value Agreement (CVA).

### What is a Customer Value Agreement?

A CVA is any arrangement between you and your Cat dealer that helps you lower your cost per unit of production. Agreements are tailored to fit your business needs and can range from simple Preventive Maintenance Kits to sophisticated Total Cost Performance Guarantees. No matter which option you choose, you can be assured that your Cat dealer will provide you with careful planning and ongoing attention that will help you succeed.

When you have a CVA with your Cat dealer, you have more time to do what you do best – run your business. Trained dealer technicians assist you by maintaining your equipment and driving down operating costs. In the end, everyone's goal is the same: helping you get more work done at a lower cost.

### Perhaps the Most Important Feature of Any CVA is Flexibility.

There are no pre-set requirements or specific products and services that you must agree to buy. In every case and with every piece of equipment, a CVA is an individualized plan. Depending on your needs, your costs can be a flat rate monthly fee or some other arrangement based on actual production hours. Your agreement may include as few or as many pieces of equipment as you wish. You can cover individual systems, single pieces of equipment or entire fleets. Your Cat dealer will work with you to determine the best strategies to maximize productivity and minimize costs for both your Cat equipment and competitive equipment.

Customer Value Agreements are not just for large pieces of equipment, and they are not just for new equipment, either. The need to get more work done at a lower cost is the same, regardless of age or application.

### A Partnership That Gets More Done.

In the end, a CVA is a partnership between you and your Cat dealer that will help you succeed by leveraging the equipment management expertise of Caterpillar. When you and your Cat dealer team up with a CVA, you get more than just a piece of Cat iron, you get the company.

# MAINTAINENCE INTERVALS

PLEASE REGISTER WITH CAT INSPECT APP

## When Required

Air Conditioner/Cab Heater Filter (Recirculation) - Inspect/Replace

Battery Electrolyte Level - Check

Battery or Battery Cable - Inspect/Replace

Bucket Linkage - Inspect/Adjust

Bucket Tips - Inspect/Replace

Cab Air Filter (Fresh Air) - Clean/Replace

Camera - Clean

Condenser (Refrigerant) - Clean

DEF Filler Screen - Clean

Diesel Exhaust Fluid - Drain

Diesel Exhaust Fluid - Fill

Engine Air Filter Primary and/or Secondary Element - Replace

Ether Starting Aid Cylinder - Replace

Film (Product Identification) - Clean

Fuel System - Prime

Fuel Tank Strainer - Clean

Fuses - Replace

Oil Filter - Inspect

Radiator, Aftercooler and Oil Cooler Cores - Clean

Rollover Protective Structure (ROPS) - Inspect

Track Adjustment - Adjust

Window Washer Reservoir - Fill

Window Wiper - Inspect/Replace

Windows - Clean

## Every 10 Service Hours or Daily for First 50 Hours

Boom and Stick Linkage - Lubricate

Boom and Stick Linkage - Lubricate

Bucket Linkage - Lubricate

## Every 10 Service Hours or Daily

Cooling System Coolant Level - Check

Engine Oil Level - Check

Fuel System Water Separator - Drain

Fuel Tank Water and Sediment - Drain

Hydraulic System Oil Level - Check

Indicators and Gauges - Test

Seat Belt - Inspect

Track Adjustment - Inspect

Travel Alarm - Test

Undercarriage - Check

# MAINTAINENCE INTERVALS

PLEASE REGISTER WITH CAT INSPECT APP

## Every 50 Service Hours

Boom and Stick Linkage - Lubricate

Boom and Stick Linkage - Lubricate

## Every 100 Service Hours

Bucket Linkage - Inspect/Adjust

Bucket Linkage - Lubricate

## Every 250 Service Hours

Engine Oil Sample - Obtain

## Initial 500 Service Hours

Cooling System Coolant Sample - Obtain

Engine Oil and Filter - Change

Final Drive Oil - Change

Swing Drive Oil - Change

## Every 500 Service Hours

Boom and Stick Linkage - Lubricate

Boom and Stick Linkage - Lubricate

Cooling System Coolant Sample - Obtain

Final Drive Oil Level - Check

Final Drive Oil Sample - Obtain

Hydraulic System Oil Sample - Obtain

Pump Coupling Oil Level - Check

Swing Bearing - Lubricate

Swing Drive Oil Level - Check

Swing Drive Oil Sample - Obtain

## Every 1000 Service Hours

Battery - Clean

Battery Hold-Down - Tighten

Belt - Inspect/Adjust/Replace

Engine Oil and Filter - Change

Fuel System Primary Filter (Water Separator) Element - Replace

Fuel System Secondary Filter - Replace

Swing Drive Oil - Change

## Every 1500 Service Hours

Fumes Disposal Filter Element - Replace

## Every 2000 Service Hours

Cooling System Coolant Sample - Obtain

Final Drive Oil - Change

Fuel Tank Cap Filter - Replace

Swing Gear - Lubricate

## Every 3000 Service Hours

Hydraulic System Oil Filter (Return) - Replace

## Every 3 Years

Seat Belt - Replace

## Every 5000 Service Hours

Diesel Exhaust Fluid Filter - Replace

Diesel Exhaust Fluid Injector - Replace

Pump Coupling Oil - Change

Receiver Dryer (Refrigerant) - Replace

## Every 6000 Service Hours

Cooling System Coolant Extender (ELC) - Add

Hydraulic System Oil - Change

## Every 10 000 Service Hours

DEF Manifold Filters - Replace

## Every 12 000 Service Hours

Cooling System Coolant (ELC) - Change



# PART NUMBER INDEX

ATTACHMENTS	PAGE No.	PART No.
LINKAGE, REACH W/ROTATE, 3.2M STICK	10	630-3543
LINKAGE, REACH W/O ROTATE, 3.2M STICK	11	630-3542
LINKAGE, UNDER/UNDER, LOG LOADER	12	630-3544
LINKAGE, OVER/UNDER, LOG LOADER	13	630-3545
LINKAGE, UNDER / UNDER, POWERCLAM, LOG LOADER	14	630-3546
BUCKET LINKAGE WITH EYE	15	521-8022
BUCKET CYLINDER	15	516-5840
OMISSION LINKAGE WITH CYLINDER	15	630-3547
OMISSION LINKAGE WITHOUT CYLINDER	15	630-3548
TRACK, 28" SINGLE GROUSER	16	617-1964
TRACK, 28", DOUBLE GROUSER	17	617-1962
TRACK, 33", TRIPLE GROUSER	18	617-1965
HYDRAULIC PKG, TCS 20, REACH	19	630-3531
HYDRAULIC PKG, TCS 22, LOG LOADER	19	630-3532
HYD PKG, TCS 22, POWER CLAM	19	630-3533
CAB, SIDE ENTRY	20	594-0723
CAB, REAR ENTRY	21	589-0520
TILTING RISER, SIDE ENTRY CAB, 22"	22	617-9008
TILT RISER, REAR ENTRY CAB, 48", EASY LOCK	23	617-9009
TILT RISER, REAR ENTRY CAB, 72", EASY LOCK	24	617-9010
INTEGRATED CAN RADIO	25	586-4493
INTEGRATED RADIO, CB + VHF.	26	598-3540
RADIO, AM/FM/USB/BT, REAR ENTRY CAB .	27	598-3531
RADIO, CB/VHF, REAR ENTRY CAB	28	598-3533
RECEIVER, BLUETOOTH, SIDE ENTRY CAB	29	599-0525
RECEIVER, BLUETOOTH, REAR ENTRY CAB	30	599-0527
CAMERA REAR ENTRY CAB	31	616-9909
CAMERA, REAR AND RIGHT SIDE, 22" RISER	32	616-9910
CAMERA REAR AND RIGHT SIDE, 48" RISER, REAR ENTRY CAB	33	616-9911
CAMERA REAR AND RIGHT SIDE, 72" RISER, REAR ENTRY CAB	34	616-9912
LIGHTS 4, SIDE ENTRY CAB FRONT	35	586-4497
LIGHTS 6, SIDE ENTRY CAB FRONT	36	586-4498
LIGHTS 4, REAR ENTRY CAB FRONT	37	598-5659
LIGHTS 6, REAR ENTRY CAB FRONT	38	598-5662
LIGHTS, 1, SIDE ENTRY CAB, REAR, ADDITION	39	586-4503
LIGHTS, 1, REAR ENTRY CAB, REAR	40	598-5665
LIGHTS, WORKING, TILT RISER, LEFT SIDE	41	588-8720
LIGHTS, 2, 22" RISER, SIDE ENTRY CAB	42	598-4711
LIGHTS, 2, 48" RISER, REAR ENTRY CAB	43	598-4712
LIGHTS, 2, 72" RISER, REAR ENTRY CAB	44	610-7438
LIGHTS, 1, ADDITIONAL, 48" / 72" BOLTED RISER, SIDE ENTRY CAB	45	602-2258
LIGHTS, 1, ADDITIONAL, 48" / 72" EASY LOCK RISER, REAR ENTRY CAB	46	588-8720
LIGHTS SURROUND, ADDITIONAL	47	616-3402

# PART NUMBER INDEX

<b>ATTACHMENTS</b>	<b>PAGE No.</b>	<b>PART No.</b>
WIRING AUXILLARY RELAY	48	623-4463
PRODUCT LINK, CELL/SAT, PL083, SIDE ENTRY CAB	49	589-1742
WIRING, PRODUCT LINK, SIDE ENTRY CAB	49	586-4507
WIRING, PRODUCT LINK, REAR ENTRY CAB	49	599-9584
COVER, REAR CAMERA, W/ CTWT LIGHT	50	586-2996
BOX, SAW, 35"	51	586-3012
BOX, SAW, 50"	52	602-3196
SCRAPER, CARRIER ROLLER	53	612-7599
BUG SCREEN	54	615-2307
STARTING AID, ETHER .	55	617-4311
BLOCK HEATER, 120V	56	339-6916
COUPLER, PIN GRABBER W/O PIN CB	57	455-3912
COUNTERWEIGHT 11023Lb / 5.1 T	58	611-1881
COUNTERWEIGHT 13448Lb / 6.1 T	58	611-1882
STORAGE PROTECTION	59	0G-4126
STORAGE PROTECTION FROM COGON GRASS	59	0P-7563

<b>WORK TOOLS</b>	<b>PAGE No.</b>	<b>PART No.</b>
GRAPPLE, GLL55 LOG LOADING	60	591-0043
GRAPPLE, GLL60 LOG LOADING	60	591-0044
HEEL FABRICATION, UNDER/UNDER	61	132-5390
HEEL, UNDER/UNDER	62	441-7331
HEEL, OVER/UNDER	63	504-6669

<b>AFTERMARKET KITS</b>	<b>PAGE No.</b>	<b>PART No.</b>
INSPECTION LIGHT KIT	64	629-9463
SIGNAL CONTROLLER KIT, SIDE ENTRY CAB	65	619-8506
SIGNAL CONTROLLER KIT, REAR ENTRY CAB	66	619-8511
FOOT PEDAL SWING KIT	67	634-2975
LIGHT GUARD	68	6357224
<b>SOFTWARE ENABLED ATTACHMENT</b>		
JOYSTICK STEERING	69	615-0355
SWING ALARM	70	617-8510
ADVANCED IMPLEMENT AND TOOL PRIORITY	71	624-3089
CUSTOM JOYSTICK	72	624-3095

# NOTES



For more complete information on Cat products, dealer services and industry solutions, visit us on the web at [www.cat.com](http://www.cat.com).

© 2022 Caterpillar. All Rights Reserved.

Materials and specifications are subject to change without notice. Featured machines in photos may include additional equipment. See your Cat dealer for available options.

CAT, CATERPILLAR, LET'S DO THE WORK, their respective logos, Product Link, SmartBoom, S-O-S, "Caterpillar Corporate Yellow", the "Power Edge" and Cat "Modern Hex" trade dress as well as corporate and product identity used herein, are trademarks of Caterpillar and may not be used without permission. VisionLink is a trademark of Caterpillar Inc., registered in the United States and in other countries.  
[www.cat.com](http://www.cat.com) [www.caterpillar.com](http://www.caterpillar.com)

