

568 GF/568 LL

SEGMENT SOLUTION FOR FORESTRY MACHINES
A VISUAL APPLICATION GUIDE



Engine Power (ISO 14396)
Operating Weight

259kW (347hp)
GF 48 500 Kg (106920 lb)
LL 49 300 Kg (108690 lb)



CONTENTS

SEGMENT SOLUTIONS	PAGE No.
HARVESTING AND PROCESSING	5
POWERCLAM	6
MILLYARD APPLICATION	7
LOG LOADING	8
ROAD BUILDING, DELIMBER CARRIER	9
ATTACHMENTS	PAGE No.
LINKAGE, REACH W/ROTATE, 3.9M STICK (NO EOU)	10
LINKAGE, REACH W/ ROTATE, 3.9M STICK, (WITH EOU)	10
LINKAGE, REACH, 3.2M STICK, (WITH EOU)	11
LINKAGE, REACH, 3.2M STICK, WITH ROTATE, (WITH EOU)	11
LINKAGE, UNDER/UNDER, LOG LOADER	12
LINKAGE, OVER/UNDER, LOG LOADER	13
LINKAGE, UNDER / UNDER, POWERCLAM, LOG LOADER	14
BUCKET LINKAGE WITH EYE	15
BUCKET LINKAGE WITHOUT EYE	15
BUCKET CYLINDER	15
OMISSION LINKAGE	15
TRACK, 28" SINGLE GROUSER	16
TRACK, 28", DOUBLE GROUSER	17
TRACK, 33", TRIPLE GROUSER	18
HYDRAULIC PKG, TCS 20, REACH	19
HYDRAULIC PKG, TCS 20, LOG LOADER	19
HYD PKG, TCS 20, POWER CLAM	19
CAB, SIDE ENTRY	20
CAB, REAR ENTRY	21
TILTING RISER, SIDE ENTRY CAB, 22"	22
TILT RISER, REAR ENTRY CAB, 48", BOLTED	23
TILT RISER, REAR ENTRY CAB, 48", EASY LOCK	24
TILT RISER, REAR ENTRY CAB, 72", EASY LOCK	25
INTEGRATED CAN RADIO	26
INTEGRATED RADIO, CB + VHF.	27
RADIO, AM/FM/USB/BT, REAR ENTRY CAB .	28
RADIO, CB/VHF, REAR ENTRY CAB	29
RECEIVER, BLUETOOTH, SIDE ENTRY CAB	30
RECEIVER, BLUETOOTH, REAR ENTRY CAB	31
CAMERA REAR ENTRY CAB	32
CAMERA, REAR AND RIGHT SIDE, 22" RISER	33
CAMERA REAR AND RIGHT SIDE, 48" RISER, REAR ENTRY CAB	34
CAMERA REAR AND RIGHT SIDE, 72" RISER, REAR ENTRY CAB	35
LIGHTS 4, SIDE ENTRY CAB FRONT	
LIGHTS 6, SIDE ENTRY CAB FRONT	
LIGHTS 4, REAR ENTRY CAB FRONT	
LIGHTS 6, REAR ENTRY CAB FRONT	
LIGHTS, 1, SIDE ENTRY CAB, REAR, ADDITION	
LIGHTS, 1, REAR ENTRY CAB, REAR	
LIGHTS, WORKING, TILT RISER, LEFT SIDE	
LIGHTS, 2, 22" RISER, SIDE ENTRY CAB	
LIGHTS, 2, 48" RISER, REAR ENTRY CAB	
LIGHTS, 2, 72" RISER, REAR ENTRY CAB	
LIGHTS, 1, ADDITIONAL, 48" / 72" BOLTED RISER, REAR ENTRY CAB	

CONTENTS

WIRING AUXILLARY RELAY	49
NETWORK MANAGER, STANDARD	50
PRODUCT LINK, CELL/SAT, PL083	51
WIRING, PRODUCT LINK, SIDE ENTRY CAB	51
WIRING, PRODUCT LINK, REAR ENTRY CAB	51
COVER, R CAMERA, W/ CTWT LIGHT	52
BOX, SAW, 50	53
LOCK, PARKING, LL .	54
BUG SCREEN	55
STARTING AID, ETHER .	56
BLOCK HEATER, 120V	57
SENSOR, PRESSURE, STANDARD	58
PRESSURE SENSOR, QUICK COUPLER	58
COUPLER, PIN GRABBER DB W/PINS	59
COUPLER, PG W/O PIN DB	59
STORAGE PROTECTION	60
STORAGE PROTECTION FROM COGON GRASS	60

WORK TOOLS	PAGE No.
-------------------	-----------------

GRAPPLE, GLL55 LOG LOADING	61
GRAPPLE, GLL60 LOG LOADING	61
HEEL FABRICATION, UNDER/UNDER	62
HEEL, UNDER/UNDER	63
HEEL, OVER/UNDER	64

AFTERMARKET KITS	PAGE No.
-------------------------	-----------------

INSPECTION LIGHT KIT	65
SIGNAL CONTROLLER KIT, SIDE ENTRY CAB	66
SIGNAL CONTROLLER KIT, REAR ENTRY CAB	67
FOOT PEDAL SWING KIT	68
POWERCLAM / BNT INSTALL	69
LIGHT GUARD	70
SOFTWARE ENABLED ATTACHMENT	
JOYSTICK STEERING	71
SWING ALARM	72
ADVANCED IMPLEMENT AND TOOL PRIORITY	73
CUSTOM JOYSTICK	74
CUSTOMER VALUE AGREEMENT	75
MAINTAINENCE INTERVALS	76-77
PART NUMBER INDEX	

CAT[®] 568

MAKES BIG TIMBER WORK
SIMPLER, SAFER, AND MORE SATISFYING

Step by step guide
to configure your
568 General forestry
or Log loader machine
starting with the base
machine, attachments,
worktools and kits,
suited for your application
or job at hand.



GENERAL FORESTRY



LOG LOADER

NEXT GENERATION FOREST MACHINES

Cat[®] next generation forest machines offer you more value than ever for your business.

- + MORE PERFORMANCE
- + GREATER COMFORT
- + ENHANCED SAFETY

Simply put, Cat next generation forest machines help you move more timber to make more money.

SEGMENT SOLUTIONS

HARVESTING AND PROCESSING

The purpose built processor configuration provides front linkage and hydraulic package for installing the dangle head processor. Many processing heads utilize hydraulic feed rolls and delimiting knives to feed trees through the head, delimiting all the branches. This also has the ability to measure length, diameter and volume and cut into desired length of logs.



568 Log Loader	Feature Compatibility	Application	
		Powerclam / Butt N Top	Straight Boom Processor carrier
Cab	Rear Entry Cab, 48" bolted riser	✓	✓
	Rear Entry Cab, 48" easy lock riser	✓	✓
	Rear Entry Cab, 72" easy lock riser	✓	✓
	Side Entry Cab, 48" easy lock riser	✓	✓
	Side Entry Cab, 22" bolted riser		
Linkage	GF reach with rotate 3.9m stick w/o EOU		
	GF reach with rotate, 3.9m stick w/ EOU		
	GF reach with rotate 3.2 stick w/o EOU, w/o rotate		
	GF reach with rotate 3.2 stick w/o EOU, w/ rotate		
	GF Linkage omission (delimber carrier)		
	LL under/under heel		✓
	LL over/under heel		✓
	LL powerclam / Butt N Top	✓	
	LL under/under heel, with ground saw hydraulics		
	LL over/under heel, with ground saw hydraulics		
LL powerclam / Butt N Top, with ground saw hydraulics	✓		
Tracks	28" single grouser	✓	✓
	28" double grouser	✓	✓
	33" triple grouser	✓	✓

SEGMENT SOLUTIONS

POWERCLAM

Dedicated log loader configuration for applications including over / under heel (as shown), under / under heel, as well as powerclam, shortwood, or Butt n Top grapples. The powerclam is used to clear cut log from the hill side and prepare to load on to trucks.



568 Log Loader	Feature Compatibility	Application
		Powerclam / Butt N Top
Cab	Rear Entry Cab, 48" bolted riser	✓
	Rear Entry Cab, 48" easy lock riser	✓
	Rear Entry Cab, 72" easy lock riser	✓
	Side Entry Cab, 48" easy lock riser	✓
	Side Entry Cab, 22" bolted riser	
Linkage	GF reach with rotate 3.9m stick w/o EOU	
	GF reach with rotate, 3.9m stick w/ EOU	
	GF reach with rotate 3.2 stick w/o EOU, w/o rotate	
	GF reach with rotate 3.2 stick w/o EOU, w/ rotate	
	GF Linkage omission (delimber carrier)	
	LL under/under heel	
	LL over/under heel	
	LL powerclam / Butt N Top	✓
	LL under/under heel, with ground saw hydraulics	
	LL over/under heel, with ground saw hydraulics	
LL powerclam / Butt N Top, with ground saw hydraulics	✓	
Tracks	28" single grouser	✓
	28" double grouser	✓
	33" triple grouser	✓

Dedicated log loader configuration for millyard applications including over / under heel (as shown), under / under heel, as well as powerclam, short-wood, or Butt n Top grapples.

SEGMENT SOLUTIONS

MILLYARD APPLICATION



568 Log Loader	Feature Compatibility	Application
		Millyard Decking Heel & Grapple
Cab	Rear Entry Cab, 48" bolted riser	
	Rear Entry Cab, 48" easy lock riser	✓
	Rear Entry Cab, 72" easy lock riser	✓
	Side Entry Cab, 48" easy lock riser	✓
	Side Entry Cab, 22" bolted riser	✓
Linkage	GF reach with rotate 3.9m stick w/o EOU	
	GF reach with rotate, 3.9m stick w/ EOU	
	GF reach with rotate 3.2 stick w/o EOU, w/o rotate	
	GF reach with rotate 3.2 stick w/o EOU, w/ rotate	
	GF Linkage omission (delimber carrier)	
	LL under/under heel	✓
	LL over/under heel	✓
	LL powerclam / Butt N Top	
	LL under/under heel, with ground saw hydraulics	✓
	LL over/under heel, with ground saw hydraulics	✓
LL powerclam / Butt N Top, with ground saw hydraulics		
Tracks	28" single grouser	✓
	28" double grouser	✓
	33" triple grouser	✓

SEGMENT SOLUTIONS

LOG LOADING

Loading trucks with logs for transport to the mill. This includes both live heel and fixed grapple variants of the machine



568 Log Loader	Feature Compatibility	Application
		Truck Loading Heel & Grapple
Cab	Rear Entry Cab, 48" bolted riser	✓
	Rear Entry Cab, 48" easy lock riser	✓
	Rear Entry Cab, 72" easy lock riser	✓
	Side Entry Cab, 48" easy lock riser	✓
	Side Entry Cab, 22" bolted riser	✓
Linkage	GF reach with rotate 3.9m stick w/o EOU	
	GF reach with rotate, 3.9m stick w/ EOU	
	GF reach with rotate 3.2 stick w/o EOU, w/o rotate	
	GF reach with rotate 3.2 stick w/o EOU, w/ rotate	
	GF Linkage omission (delimber carrier)	
	LL under/under heel	✓
	LL over/under heel	✓
	LL powerclam / Butt N Top	
	LL under/under heel, with ground saw hydraulics	✓
	LL over/under heel, with ground saw hydraulics	✓
	LL powerclam / Butt N Top, with ground saw hydraulics	
Tracks	28" single grouser	✓
	28" double grouser	✓
	33" triple grouser	✓

SEGMENT SOLUTIONS

ROAD BUILDING, DELIMBER CARRIER

This General Forestry configuration includes bucket, thumb, and quick coupler hydraulics and lines groups are included for use in forestry roadbuilding, landclearing, mulching, and loading chippers and grinders. The thumb-ready stick makes thumb installation simple and straightforward, and the optional medium pressure hydraulic circuit with dedicated variable displacement auxiliary pump allows flexibility for using rotating attachments like log grapples or powerclam grapples when needed. This provides a very versatile configuration for a variety of attachments and applications.



568 Log Loader	Feature Compatibility	GF Roadbuilding
		Bucket, thumb, Quick coupler hydraulics
Cab	Rear Entry Cab, 48" bolted riser	
	Rear Entry Cab, 48" easy lock riser	
	Rear Entry Cab, 72" easy lock riser	
	Side Entry Cab, 48" easy lock riser	
	Side Entry Cab, 22" bolted riser	✓
Linkage	GF reach with rotate 3.9m stick w/o EOU	✓
	GF reach with rotate, 3.9m stick w/ EOU	✓
	GF reach with rotate 3.2 stick w/o EOU, w/o rotate	✓
	GF reach with rotate 3.2 stick w/o EOU, w/ rotate	✓
	GF Linkage omission (delimber carrier)	
	LL under/under heel	
	LL over/under heel	
	LL powerclam / Butt N Top	
	LL under/under heel, with ground saw hydraulics	
LL over/under heel, with ground saw hydraulics		
LL powerclam / Butt N Top, with ground saw hydraulics		
Tracks	28" single grouser	✓
	28" double grouser	✓
	33" triple grouser	✓

ATTACHMENT

LINKAGE REACH WITH ROTATE, 3.9M STICK

Without ease of use (EOU)

Includes:

- BOOM, REACH, 213" (6.5M)
- STICK, R1210" (3.9M) Heavy Duty
- CYLINDER, STICK
- LINES, BOOM, REACH
- LINES, S TRAVEL DR, W/ QC
- LINES, HP, REACH BOOM
- LINES-HP, R1210" (3.9M) STICK
- CIRCUIT, QUICK COUPLER
- LINES, QC, REACH BOOM
- LINES-QC, R1210" (3.9M) STICK
- LIGHTS, REACH BOOM

Bucket, thumb, and quick coupler hydraulics and lines groups are included on General Forestry roadbuilder configurations for use in forestry roadbuilding, landclearing, mulching, and loading chippers and grinders. Note that this linkage group does not include the medium pressure hydraulic circuit with dedicated variable displacement auxiliary pump allows flexibility for using rotating attachments like log grapples or powerclam grapples when needed.



INCLUDES:

- BOOM, REACH, 6.5M (213")
- STICK, R3.9M DB, HD, EOU (1210" HD ,EOU)
- LINES-HP, R3.9M STICK (1210")
- LINES-QC, R3.9M STICK (1210")
- LINES, HP, REACH BOOM
- CYLINDER, BOOM
- CYLINDER, STICK
- CIRCUIT, QUICK COUPLER
- BRACKET, CENTER HR & MC VALVE
- LINES, S TRAVEL DR, W/ QC
- CONTROL, AUX, 85CC, LL
- LIGHTS, REACH BOOM, GF
- LINES, BOOM, REACH
- LINES, MP, REACH BOOM
- LINES, QC, REACH BOOM
- LINES-MP, R3.9M STICK (1210")

ATTACHMENT

LINKAGE REACH WITH ROTATE, 3.9M STICK

With Ease of Use (EOU)

ATTACHMENT

LINKAGE REACH WITH EASE OF USE, 3.2M STICK

Without Rotate

Includes:

- BOOM, REACH, 6.5M (213")
 - STICK, R3.2M (106") DB, HD, EOU
 - CYLINDER, STICK
 - LINES, BOOM, REACH
 - LINES, S TRAVEL DR, W/ QC
 - LINES, HP, REACH BOOM
 - LINES-HP, R3.2M (106") STICK
 - CIRCUIT, QUICK COUPLER
 - LINES, QC, REACH BOOM
 - LINES-QC, R3.2M (106") STICK
 - LIGHTS, REACH BOOM, GF
 - CYLINDER, BOOM
 - Boom, stick, and lines groups for bucket, thumb, quick coupler hydraulics.
- Medium pressure (rotate) lines group not included. Auxiliary piston pump not included. Bucket linkage and cylinder not included



ATTACHMENT

LINKAGE REACH WITH EASE OF USE, 3.2M STICK

With Rotate

INCLUDES:

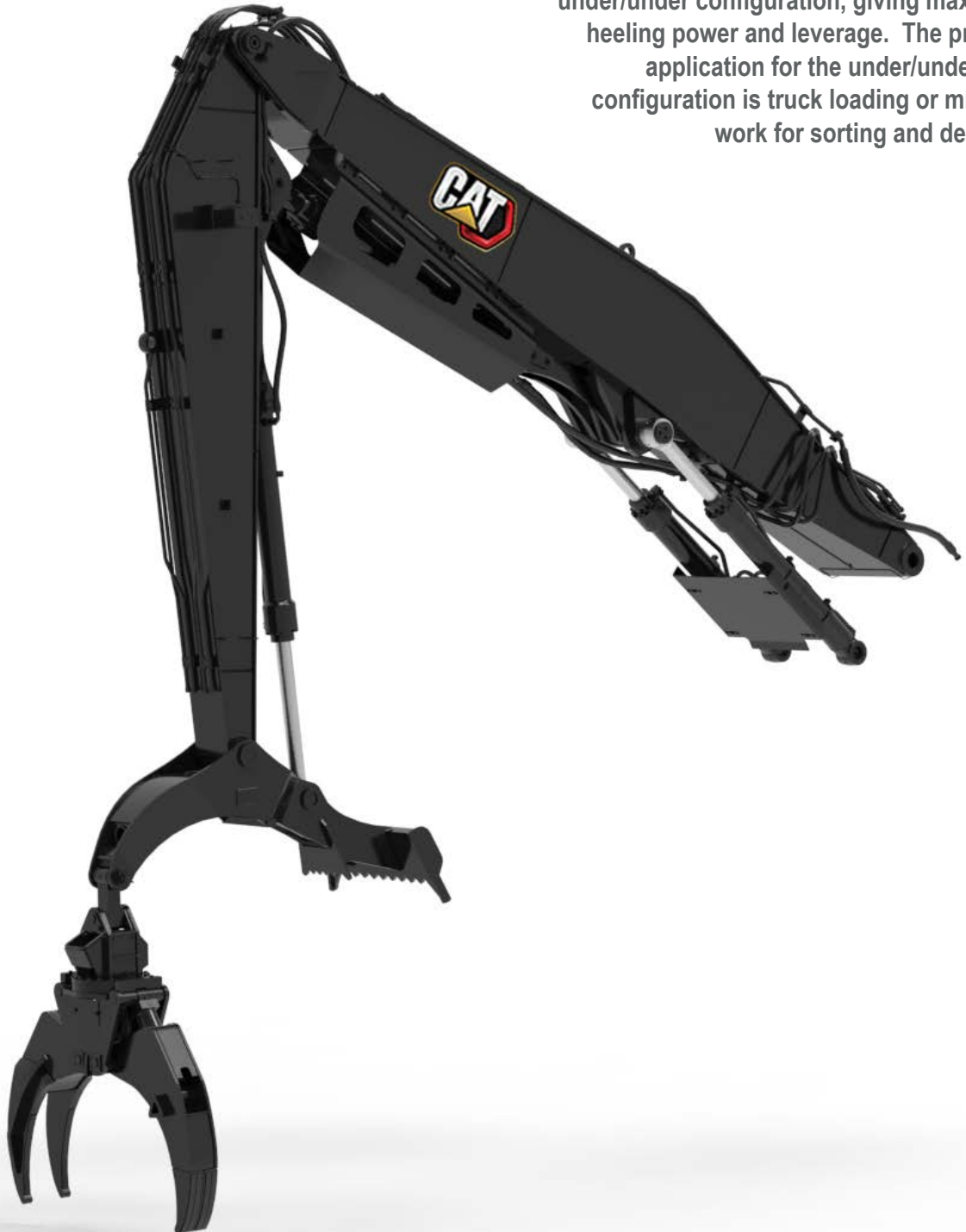
- BOOM, REACH, 6.5M (213")
- STICK, R3.2M DB, HD, EOU (106")
- LINES-HP, R3.2M STICK (106")
- LINES-QC, R3.2M STICK (106")
- LINES, HP, REACH BOOM
- CYLINDER, BOOM
- CYLINDER, STICK
- CIRCUIT, QUICK COUPLER
- BRACKET, CENTER HR & MC VALVE
- LINES, S TRAVEL DR, W/ QC
- CONTROL, AUX, 85CC, LL
- LIGHTS, REACH BOOM, GF
- LINES, BOOM, REACH
- LINES, MP, REACH BOOM
- LINES, QC, REACH BOOM
- LINES-MP, R3.2M STICK (106")

INCLUDES:
-CYLINDER, BOOM, LL
-CYLINDER, STICK, LL
-BRACKET, CENTER HR & MC VALVE
-BOOM, STRAIGHT, LL, U/U & O/U
-STK, U/U,W/ HP MP & HEEL LINES
-CONTROL, AUX, 85CC, LL
-LIGHTS, STICK, U/U
-LINES, BOOM, LL,W/ HP MP LINES
-LINES, S TRAVEL DR, W/O QC

ATTACHMENT

LINKAGE UNDER / UNDER LOG LOADER

The under/under heel log loader configuration is used for truck loading, shovel logging, millyard decking applications, as well as locally installed processor packages when combined with a processor installation kit. The heel cylinder is mounted underneath the stick in the under/under configuration, giving maximum heeling power and leverage. The primary application for the under/under heel configuration is truck loading or millyard work for sorting and decking.



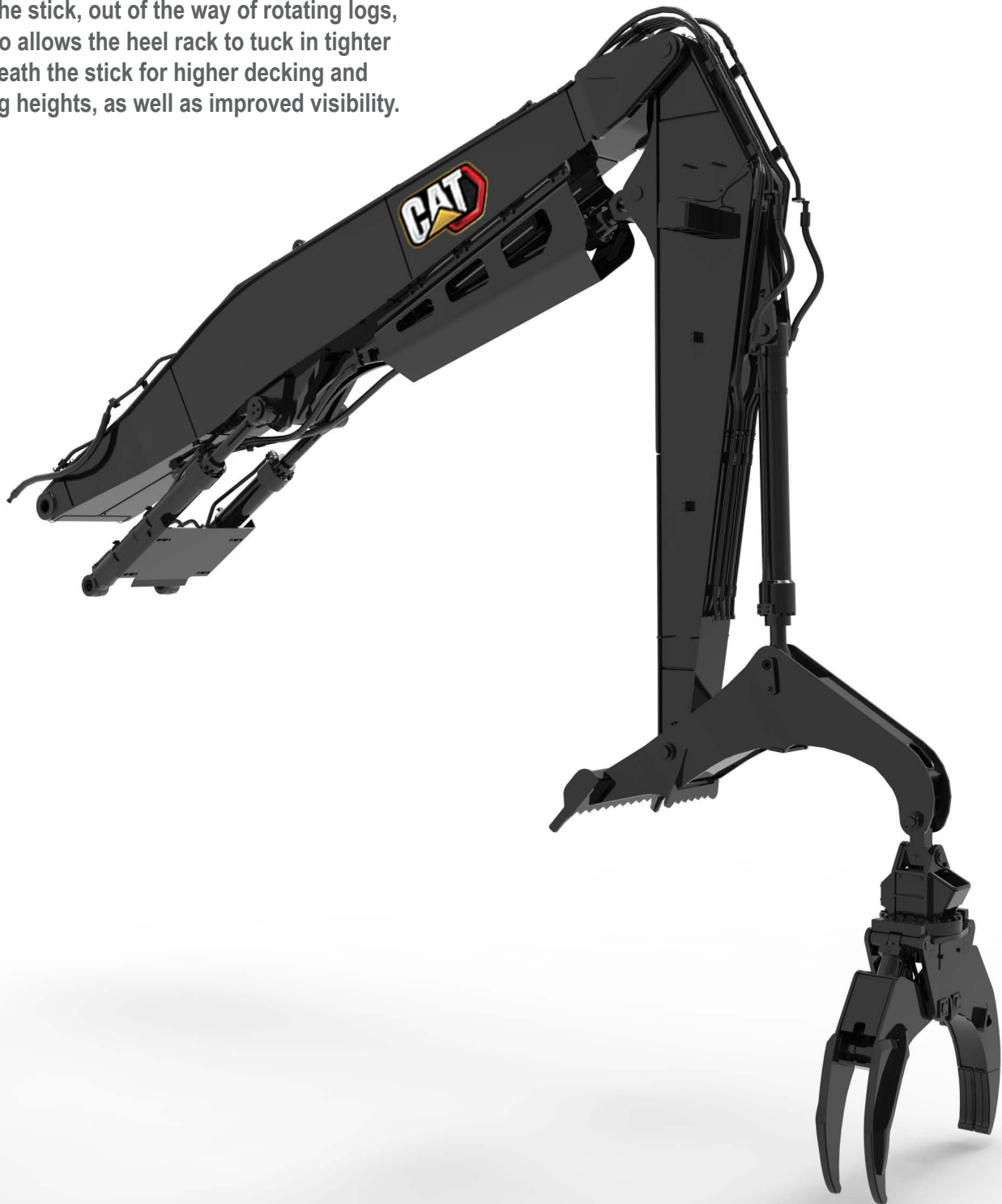
ATTACHMENT

LINKAGE OVER / UNDER LOG LOADER

The over/under heel log loader configuration is primarily used for millyard decking applications, inventorying logs into decks, unloading and reloading trucks, as well as sorting and merchandising. The over/under heel configuration has the heel cylinder mounted on top of the stick, out of the way of rotating logs, and also allows the heel rack to tuck in tighter underneath the stick for higher decking and level log heights, as well as improved visibility.

INCLUDES:

- CYLINDER, BOOM, LL
- CYLINDER, STICK, LL
- BRACKET, CENTER HR & MC VALVE
- BOOM, STRAIGHT, LL, U/U & O/U
- CONTROL, AUX, 85CC, LL
- LIGHTS, STICK, O/U
- LINES, BOOM, LL,W/ HP MP LINES
- LINES, S TRAVEL DR, W/O QC
- STK, O/U,W/ HP MP & HEEL LINES



INCLUDES:

- CYLINDER, BOOM, LL
- CYLINDER, STICK, LL
- BRACKET, CENTER HR & MC VALVE
- BOOM, STRAIGHT, LL, U/U & O/U
- STK, U/U,W/ HP MP & HEEL LINES
- CONTROL, AUX, 85CC, LL
- LIGHTS, STICK, U/U
- LINES, BOOM, POWERCLAM W/HP MP
- LINES, S TRAVEL DR, W/O QC

ATTACHMENT

LINKAGE UNDER / UNDER POWER CLAM, LOG LOADER

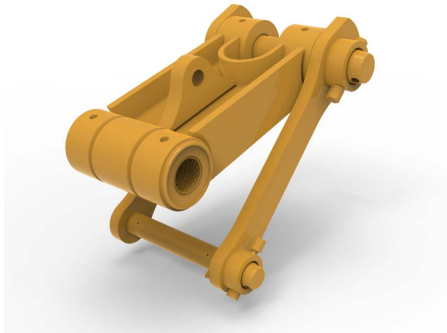
The powerclam / Butt N Top log loader configuration utilizes a top mounted tool cylinder for power rotating grapples. The Butt N Top grapple is primarily used for long log lengths and configured with hydraulic outriggers on the grapple in order to be able to orient the logs with butts ahead or tops ahead in truck loading and millyard applications.

Powerclam grapples are also power rotating grapples that can have 0, 1, or 2 outriggers on the grapple and typically utilize a 4&3 tine jaw configuration and are very versatile for handling measured log lengths or short wood for truck loading, decking trees at the landing from skidders, piling and loading chippers and grinders.



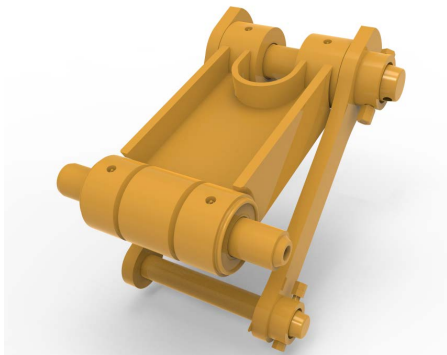
ATTACHMENT

OTHER LINKAGE



BUCKET LINKAGE WITH EYE

BUCKET LINKAGE,
- PROVISION OF EYE TO LIFT LOAD
ONLY FOR USE WITH:
LINKAGE - REACH W/ROTATE,
LINKAGE - REACH FORESTRY MACHINE



BUCKET LINKAGE WITHOUT EYE

BUCKET LINKAGE,
-THIS LINKAGE DOES NOT HAVE
PROVISION FOR LIFTING ANY LOAD
ONLY FOR USE WITH:
LINKAGE - REACH WITH ROTATE,



BUCKET CYLINDER

THIS BUCKET CYLINDER IS USED
WITH DB LINKAGES
CAN BE USED FOR LINKAGES
WITH OR WITHOUT EYE

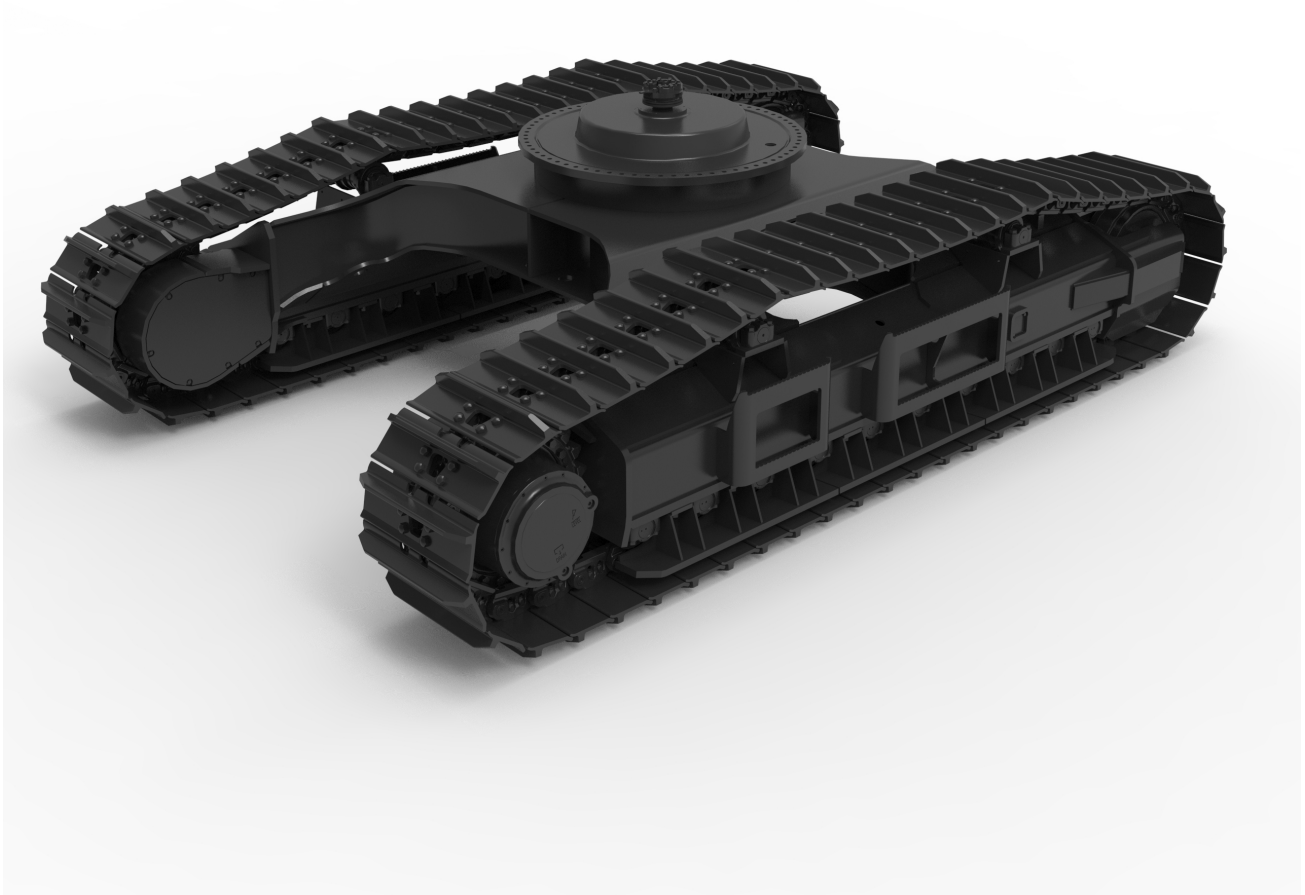
OMISSION LINKAGE

INCLUDES:
-LINES, STRAIGHT TRAVEL DRAIN LINES,
-W/O QUICK COUPLER
Linkage NOT included

The 28" single grouser is especially useful in steeper ground applications and has more impact when travelling on logging roads and primarily utilised in-wood. The narrower shoe width minimizes track bending and improves undercarriage life particularly in broken ground and tough underfoot conditions.

ATTACHMENT

TRACK SINGLE GROUSER 28" WIDTH

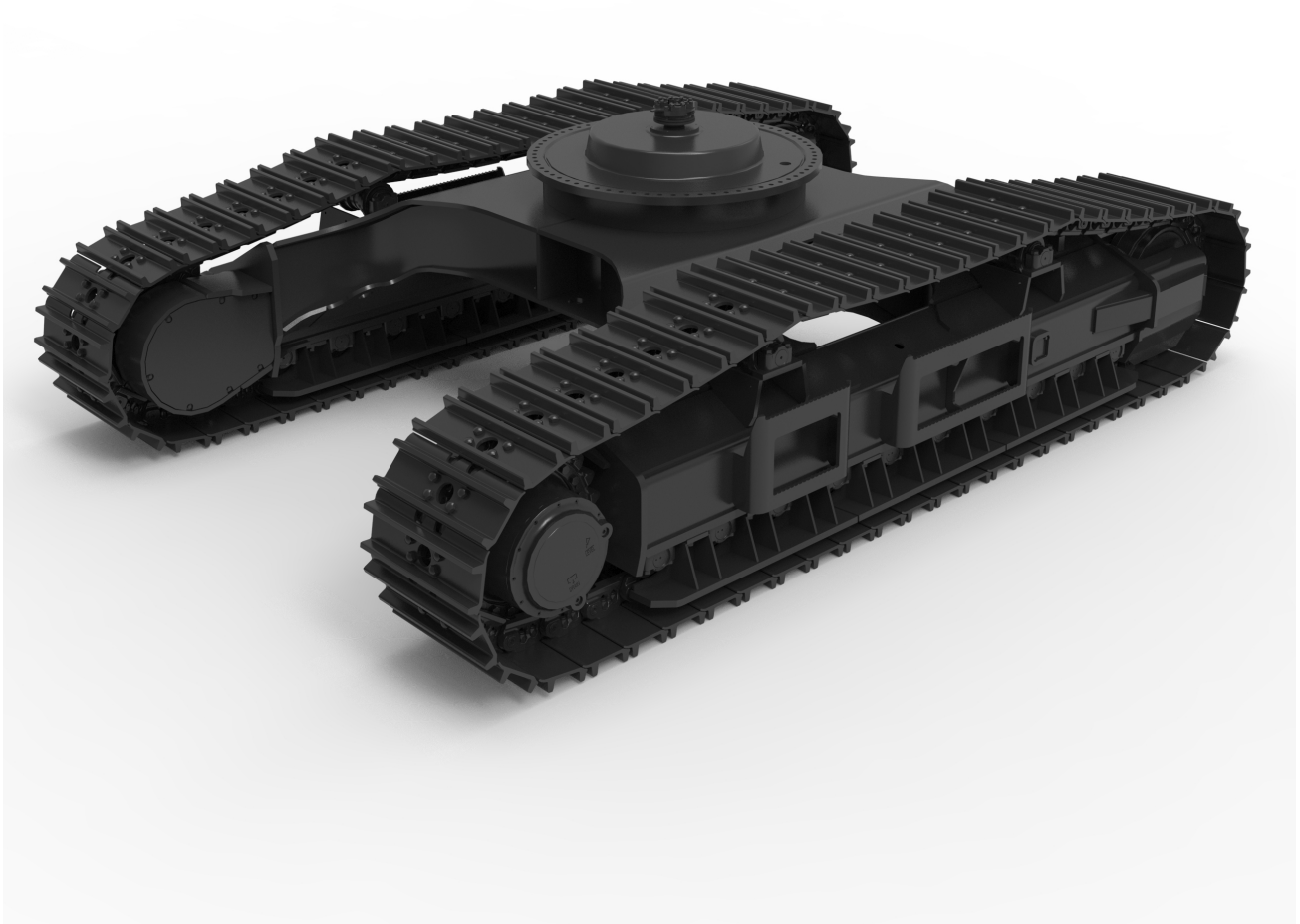


The 24" single grouser track undercarriage arrangement gives the most aggressive traction capability, with the use of taller grouser height and the ability to bite into the ground for reduced track chance slip.

ATTACHMENT

TRACK DOUBLE GROUSER 28" WIDTH

The 28" double grouser track undercarriage arrangement is the most versatile and popular shoe arrangement with a compromise between the aggressiveness of the single grouser shoe and the wider width and shorter grouser height of the triple grouser shoe.

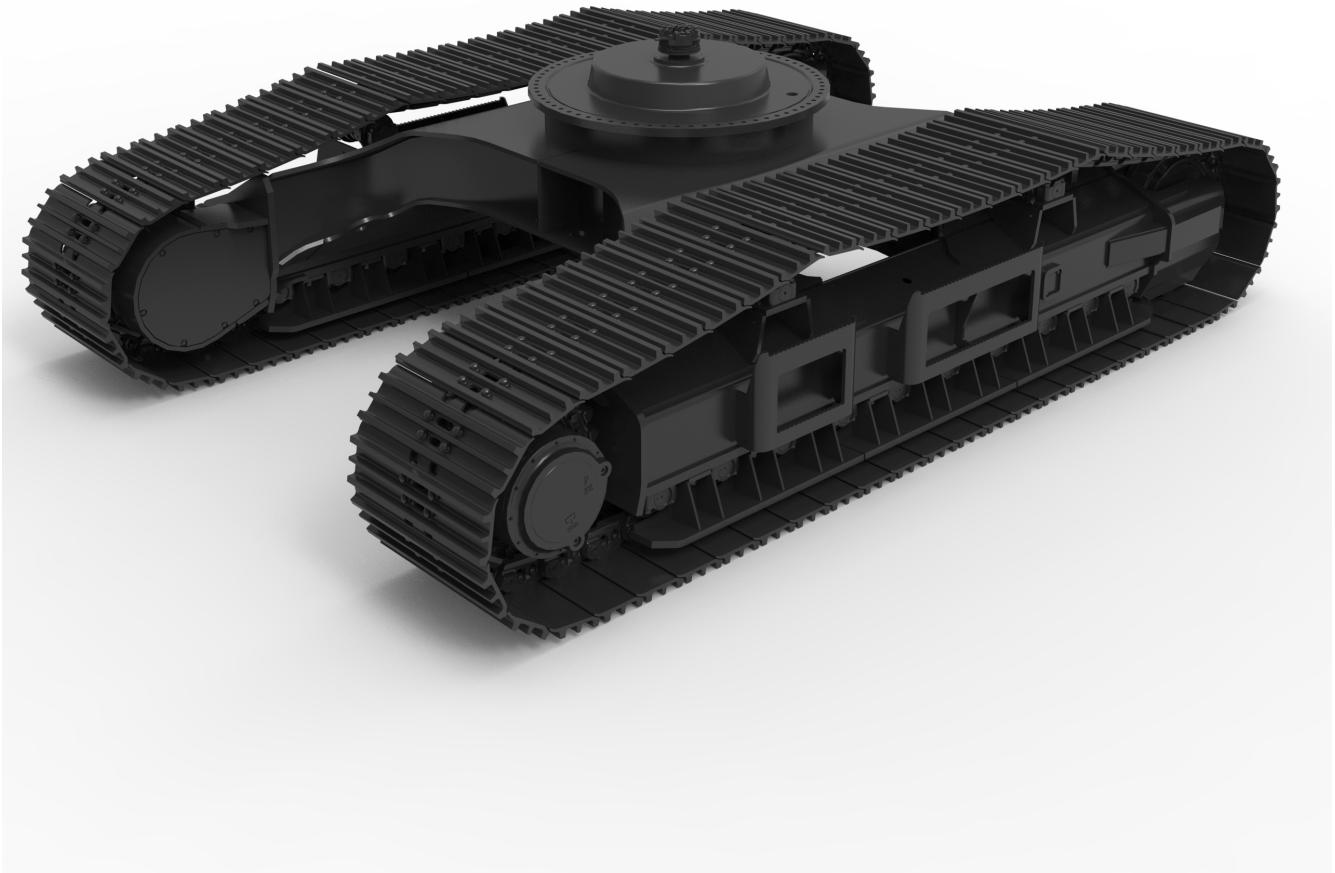


The track gives good overall performance and durability for a variety of applications including soft underfoot as well as in-wood or at the landing. It has reduced impact on the roads compared to single grouser tracks.

The 31" triple grouser track undercarriage is most often used in the millyard application with improved surfaces as well as applications that require improved floatation.

ATTACHMENT

TRACK TRIPLE GROUSER 33" WIDTH



Wider tracks with lower grouser height provide smoother travel and good operating condition on improved surfaces, as well as in-wood applications needing more floatation.

ATTACHMENT

HYDRAULIC PACKAGE

INCLUDES:

-VALVE Arrangement, LogLoader W/ TCS 20

-LINES, HOSE, General Forestry OR
Log Loader

-CONTROL, ADV, Tool Control System 20

ONLY FOR USE WITH:

LINKAGE, REACH W/O ROTATE

LINKAGE, REACH W/ ROTATE

HYDRAULIC PACKAGE TOOL CONTROL SYSTEM 20, REACH

This Hydraulic package is used for Roadbuilder or General forestry configurations.

This hydraulic package has a two way pump with a common circuit (one or two ways) circuit pressure and change is electronically controlled by thumb wheel.

INCLUDES:

-VALVE Arrangement, LogLoader W/ TCS 20

-LINES, HOSE, General Forestry OR Log Loader

-CONTROL, ADV, Tool Control System 20

ONLY FOR USE WITH:

LINKAGE, UNDER/UNDER, LL

LINKAGE, OVER/UNDER, LL

HYDRAULIC PACKAGE TOOL CONTROL SYSTEM 20, LOG LOADER

Tool control package for under/under or over/under heel log loader with ground saw slasher package, includes hydraulic connections for ground saw slasher circuit. This hydraulic package has two way pump with 2 way circuit and electronic control.

INCLUDES:

-VALVE ARR, LL W/ TCS 20

-LINES, HOSE, POWER CLAM

-CONTROL, ADV, TCS 20,

ONLY FOR USE WITH:

LINKAGE, U/U W/ POWERCLAM, LL

HYDRAULIC PACKAGE TOOL CONTROL SYSTEM 20, POWER CLAM

Tool control package for power clam log loader with ground saw slasher package, includes hydraulic connections for ground saw slasher circuit.

The side entry cab has ingress from the left side of the machine.
The cab is certified for ROPS, WBC, OPS, SAE, FOPS, ISO and OR-OSHA.

ATTACHMENT

CAB SIDE ENTRY



Includes in addition to standard equipment:
Standard operator controls,
32 mm (1.25") front window,
Mounting bosses in cab for processor electronics,
Left and right side sliding windows
Only for use with:
general forestry machine
log loader forestry machine



ATTACHMENT

CAB REAR ENTRY

The rear entry cab has ingress from the right side of the machine over the platform from the rear of the cab.

This is a safer way to enter the operator station. This cab is spacious and has increased visibility.

The cab is certified for ROPS, WBC, OPS, SAE, FOPS, ISO and OR-OSHA.

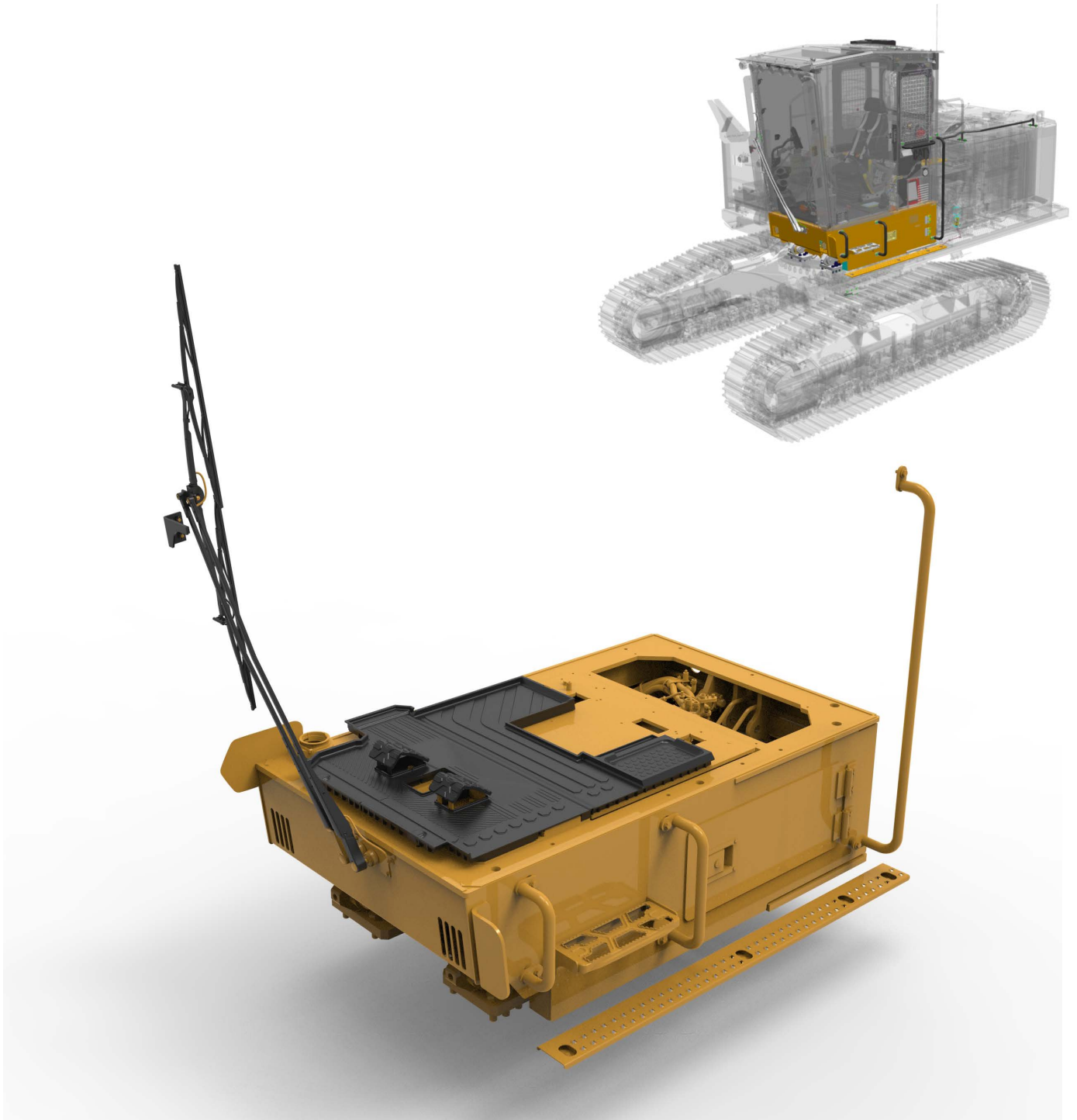


Includes in addition to standard equipment:
Standard operator controls,
32 mm (1.25") thick front window,
Mounting bosses in cab for processor electronics,
Left and right side sliding windows
Only for use with:
Log Loader forestry machine

ATTACHMENT

TILTING RISER, SIDE ENTRY 22"

This is a riser with a height of 22", available for the side-entry cab to increase the transportability of the FM machine with a work tool.

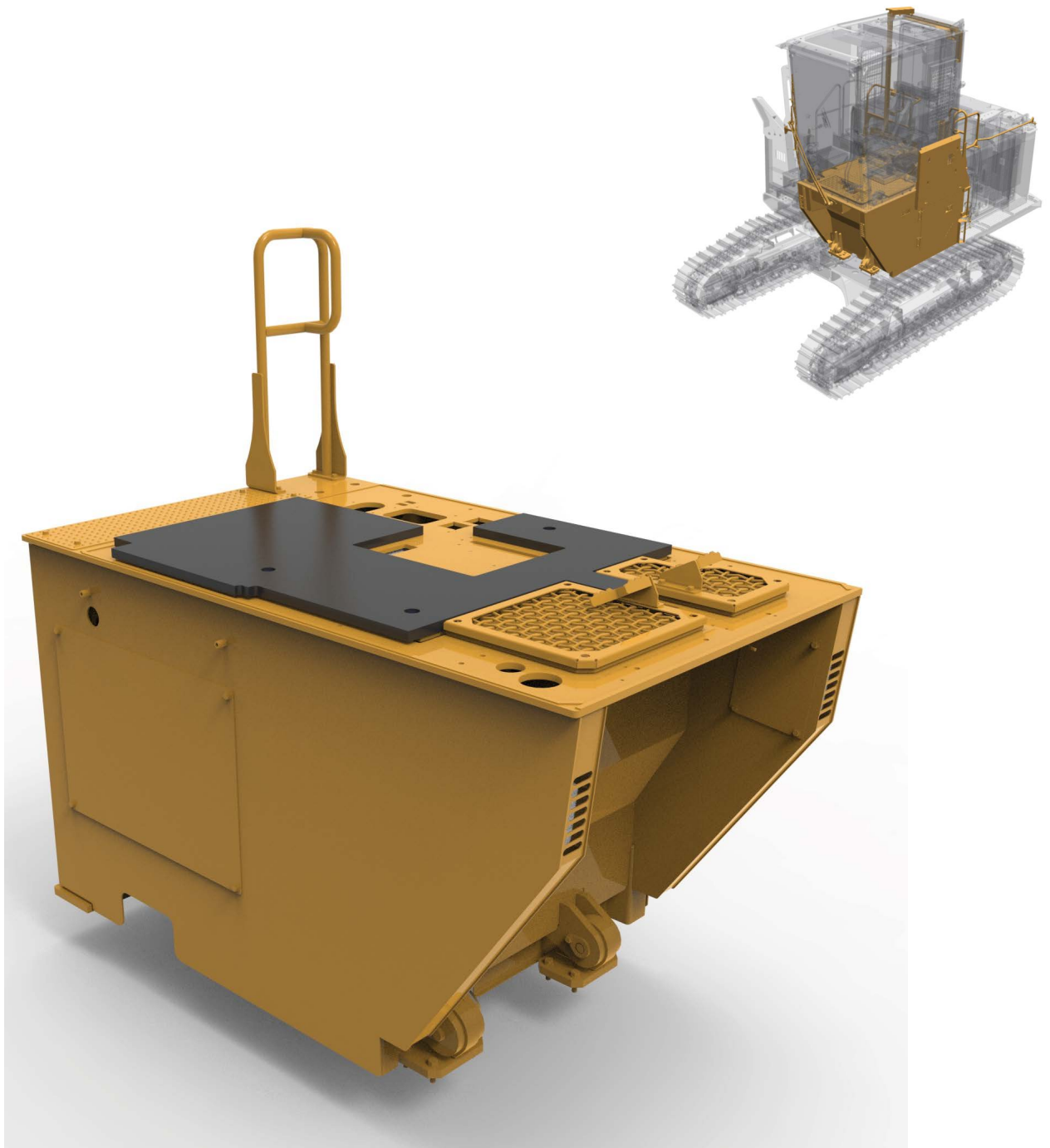


Includes 22" cab riser with hydraulic tilt to tilt cab forward for machine transport hauling.

This 48" cab riser is mainly used for the log loaders to help see loading of logs on to trucks from a higher eye point. This Riser can be tilted along with the cab during transportation

ATTACHMENT

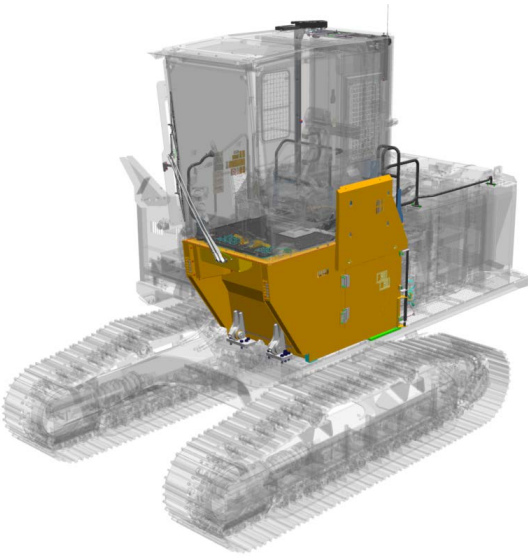
TILTING RISER, REAR ENTRY CAB, BOLTED



48 inch Tilting riser for Rear Entry Cab - Easy Lock Includes 48" cab riser with hydraulic tilt to tilt cab forward for machine transport hauling.
Only for use with: Log Loader forestry machine and rear entry cab

This 48" cab riser is mainly used for the log loaders to help see loading of logs on to trucks from a higher eye point.

This Riser can be tilted with a hydraulic motor, with the cab during transportation.



ATTACHMENT

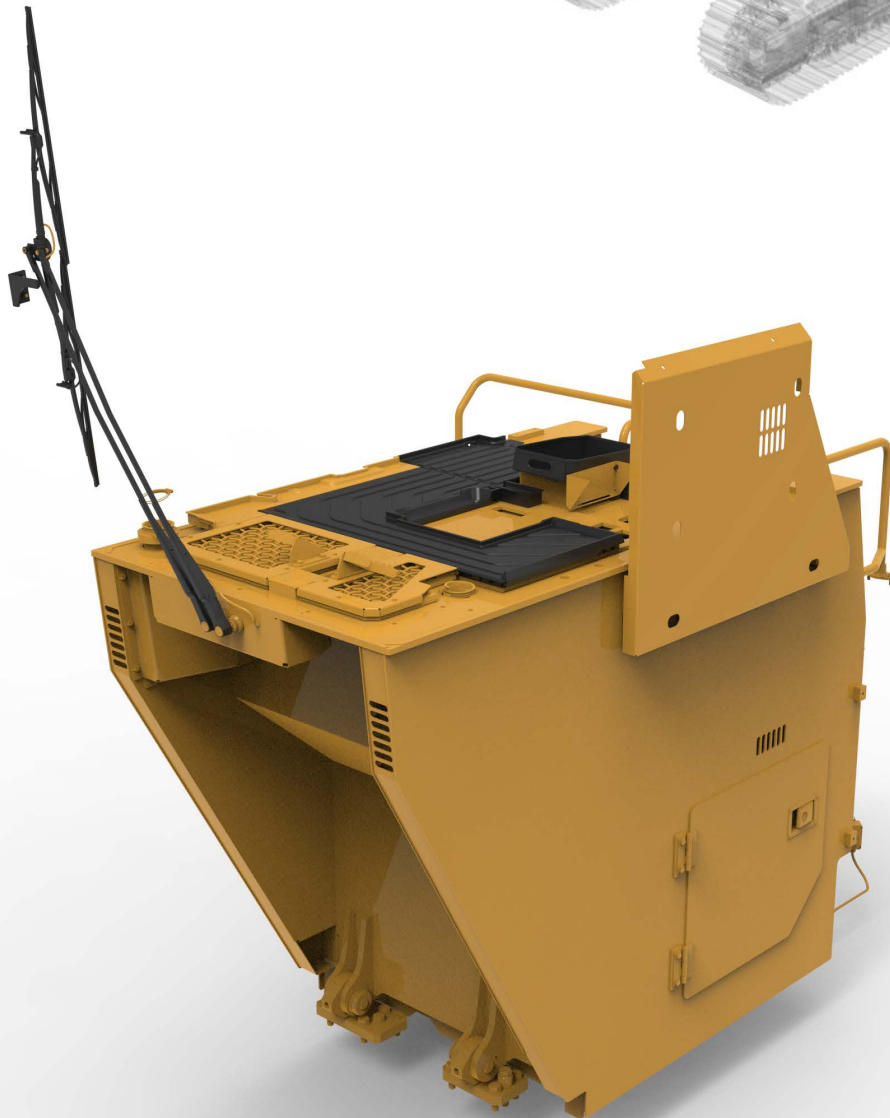
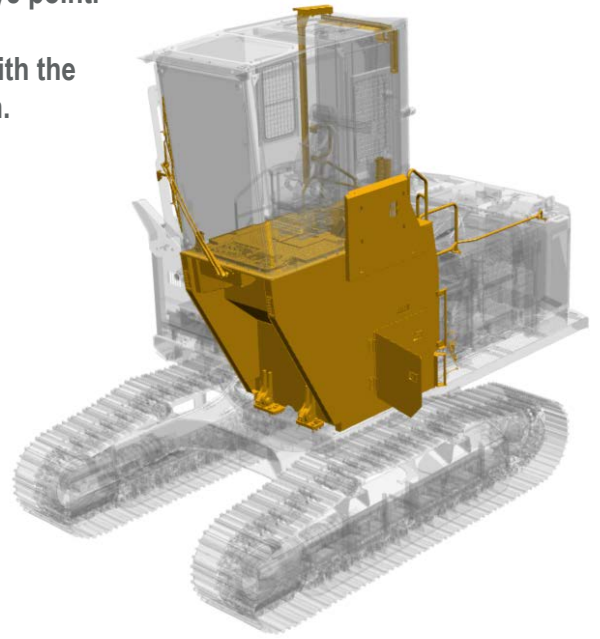
TILTING RISER,
REAR ENTRY CAB,
48" ,EASY LOCK



ATTACHMENT

TILTING RISER,
REAR ENTRY CAB,
72", EASY LOCK

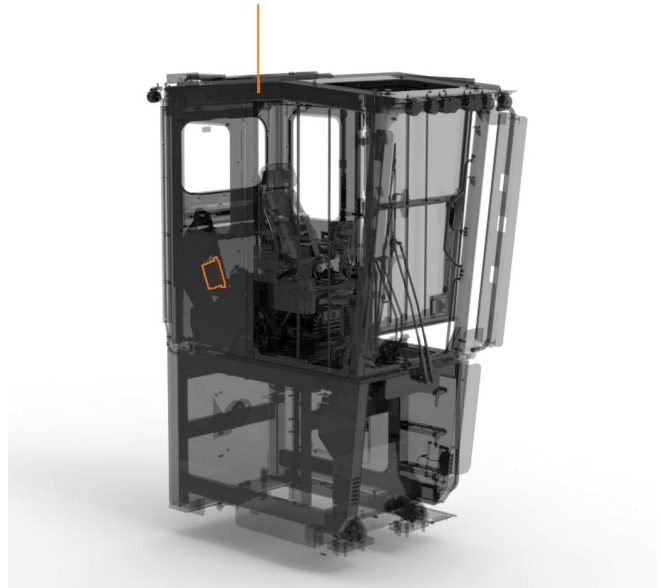
This 72" cab riser is mainly used for the log loaders to help see loading of logs on to trucks from a higher eye point. This Riser can be tilted with a hydraulic motor, with the cab during transportation.



ATTACHMENT

INTEGRATED CAN RADIO

CAN radios are a platform that complements vehicle command and control functionality via CAN J1939. They are equipped with AM/FM worldwide Radio data system receivers including Digital audio broadcasting tuner, bluetooth and additional auxillary inputs. The CAN radios can be connected to a touch screen display or remote control in the vehicle to send or receive CAN J1939 messages. This is designed for high vareity of commercial agricultural and construction vehicles.



Integrated faceless AM/FM radio with Bluetooth technology. Interfaces with an advanced display. Availability varies by country. Only for use with: Side entry cab



Antennae

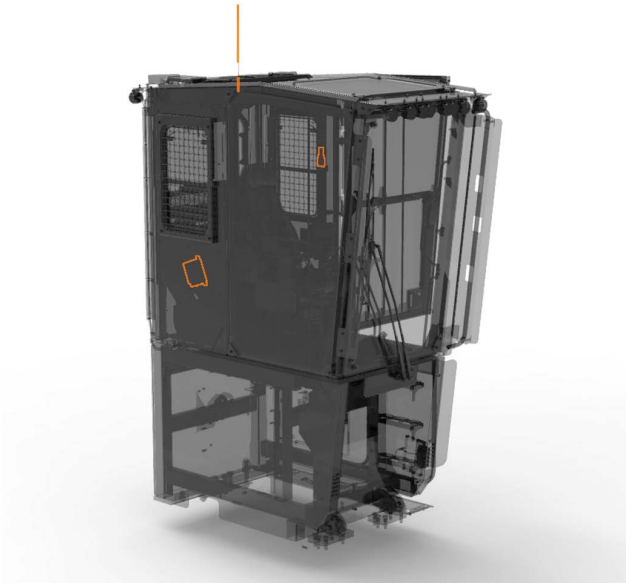
ATTACHMENT

INTEGRATED RADIO CB (Citizen brand) + VHF (Very High Frequency)

Integrated faceless AM/FM radio with Bluetooth technology. Interfaces with an advanced display.

Availability varies by country. Includes RADIO, AM/FM/USB/BT, plus a mounting bracket for a CB/VHF radio.

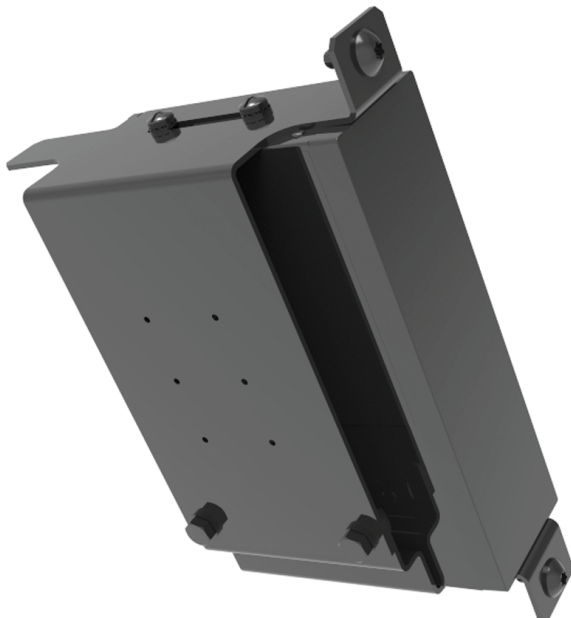
Only for use with: side entry cab



Antennae



Mounting bracket for a CB/VHF radio.





ATTACHMENT

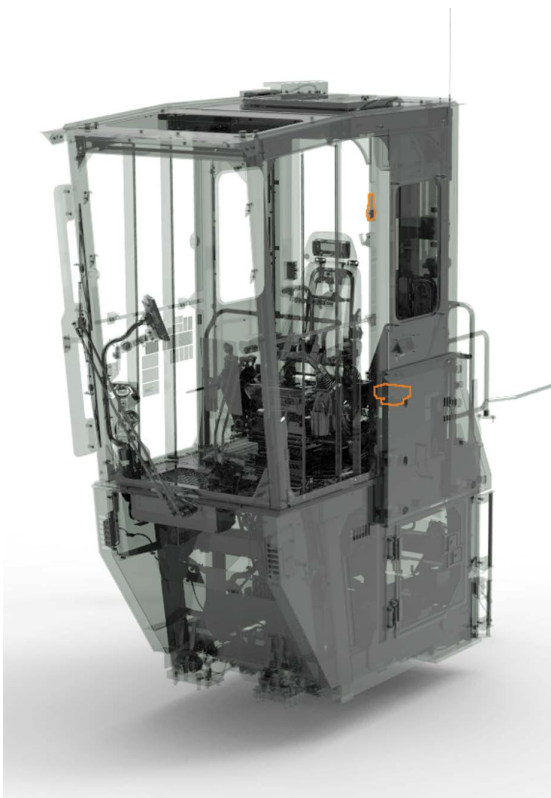
**RADIO, AM/FM,
USB/Bluetooth
REAR ENTRY CAB**

Integrated faceless AM/FM radio
with Bluetooth technology for
Rear entry cab. Interfaces with
an advanced display.
Availability varies by country.





Mounting bracket for a CB/VHF radio.



ATTACHMENT

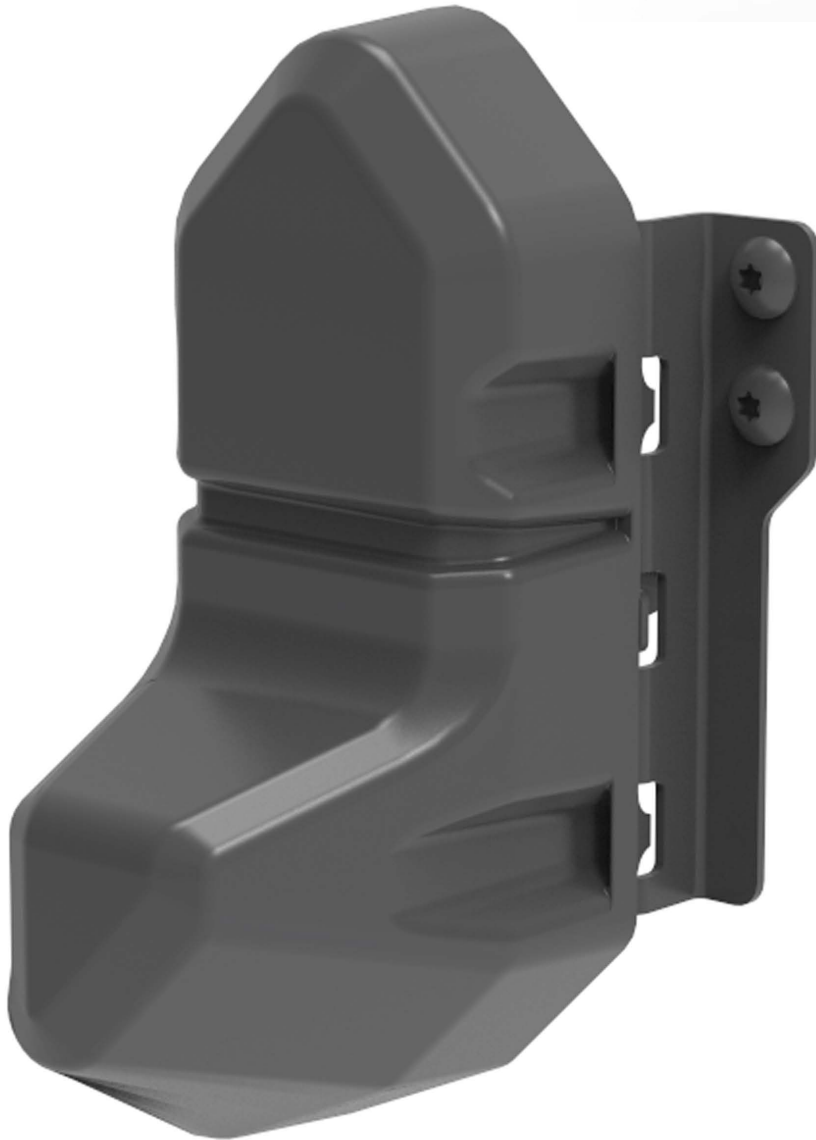
RADIO, CB/VHF REAR ENTRY CAB

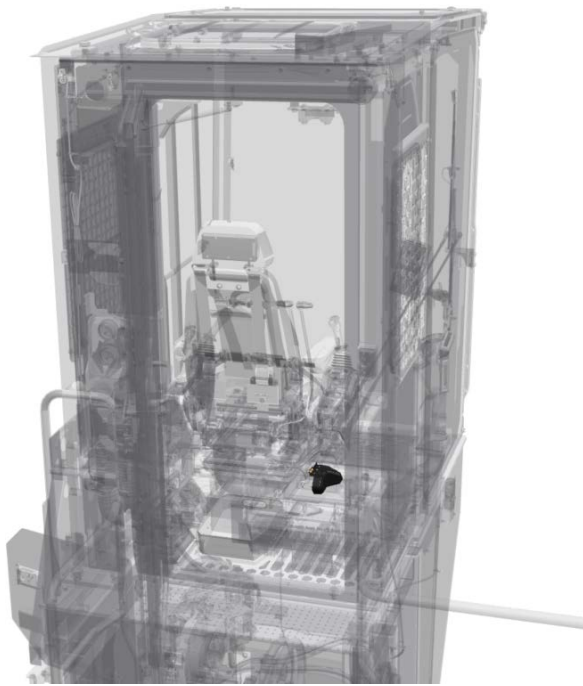
Integrated faceless AM/FM radio with Bluetooth technology. Interfaces with an advanced display. Availability varies by country. Includes RADIO, AM/FM/USB/Bluetooth, plus a mounting bracket for a CB/VHF radio.

ATTACHMENT

RECEIVER BLUETOOTH SIDE ENTRY CAB

Bluetooth receiver for side entry cab.
Only for use with: side entry cab.





ATTACHMENT

RECEIVER BLUETOOTH REAR ENTRY CAB

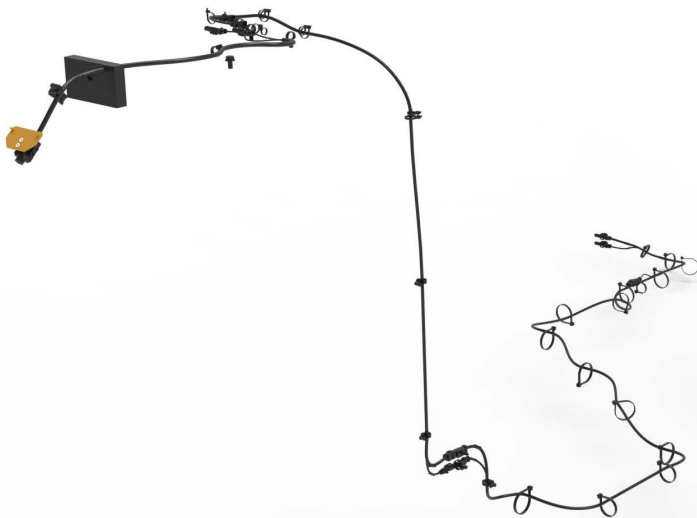
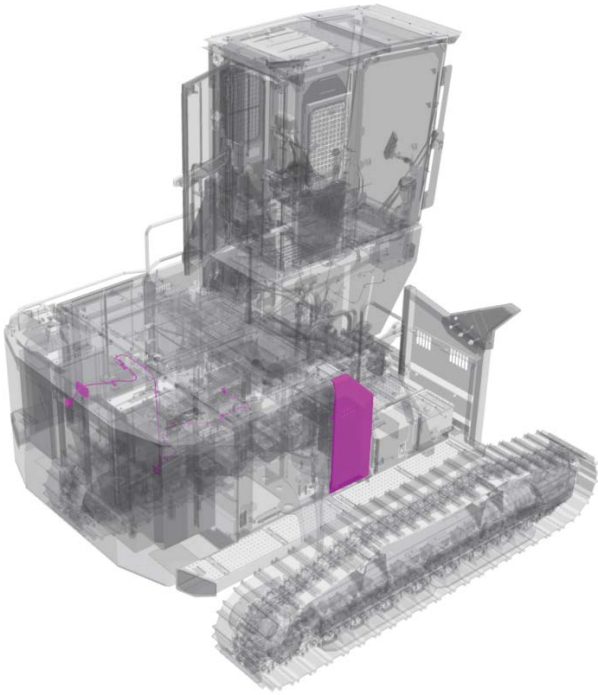
Bluetooth receiver for rear entry cab.
Only for use with: rear entry cab



Rearview Camera is built into the counterweight providing view to the rear of the machine. This is a standard for all NGH forestry machines. Camera output can be the machine display

ATTACHMENT

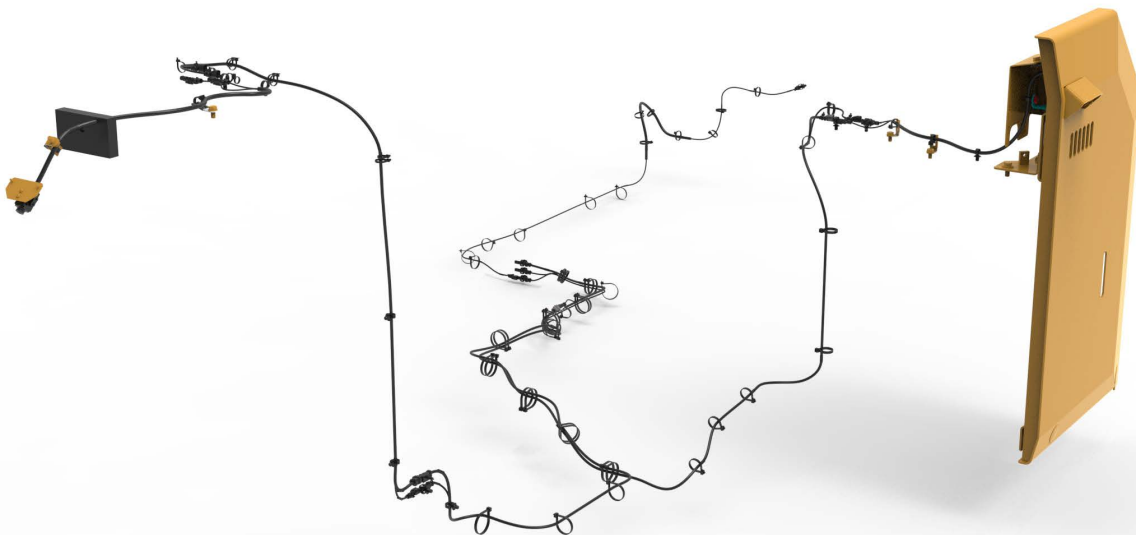
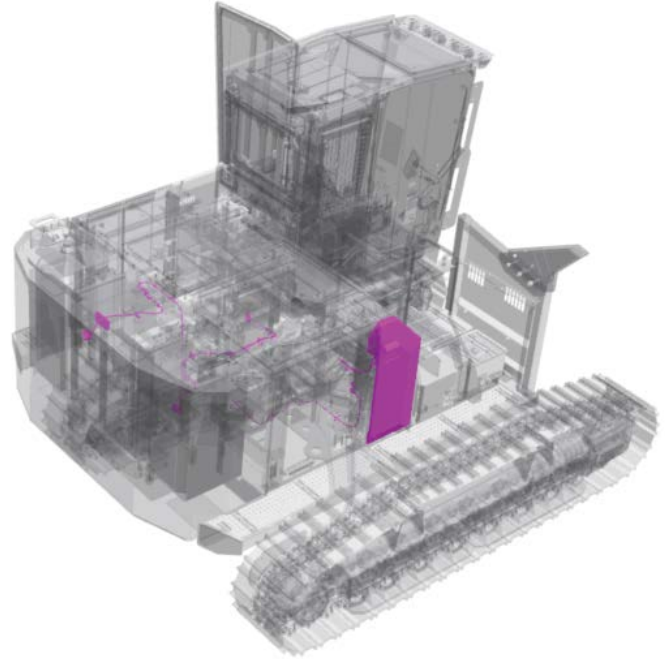
CAMERA REAR VIEW



ATTACHMENT

CAMERA, REAR & RIGHT SIDE, 22" RISER

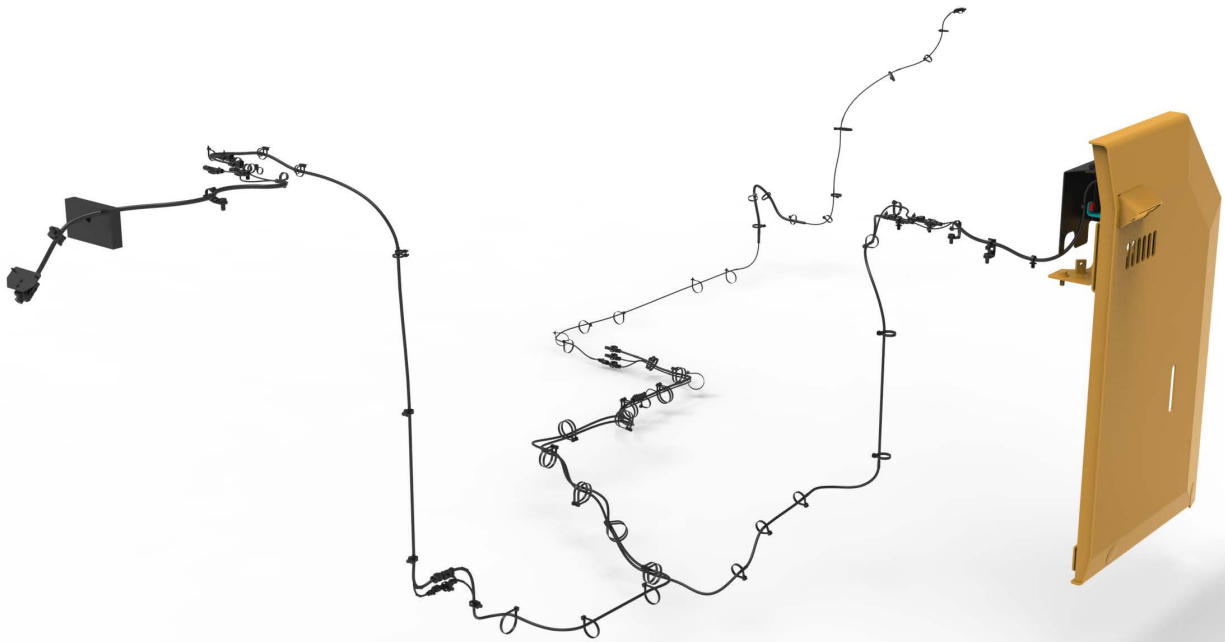
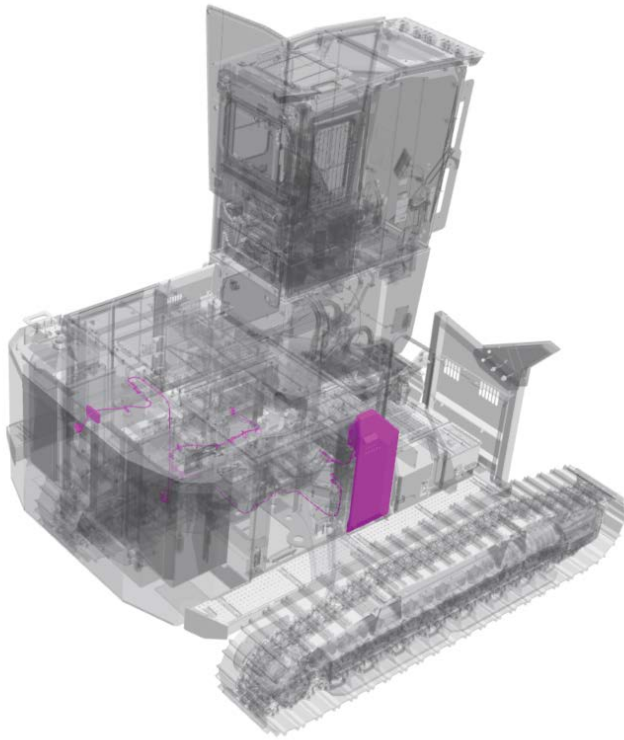
Camera to view the rear of the machine and the right hand side with 22" riser.
Camera output can be seen on the machine display



ATTACHMENT

CAMERA, REAR & RIGHT SIDE 48" RISER, REAR ENTRY CAB

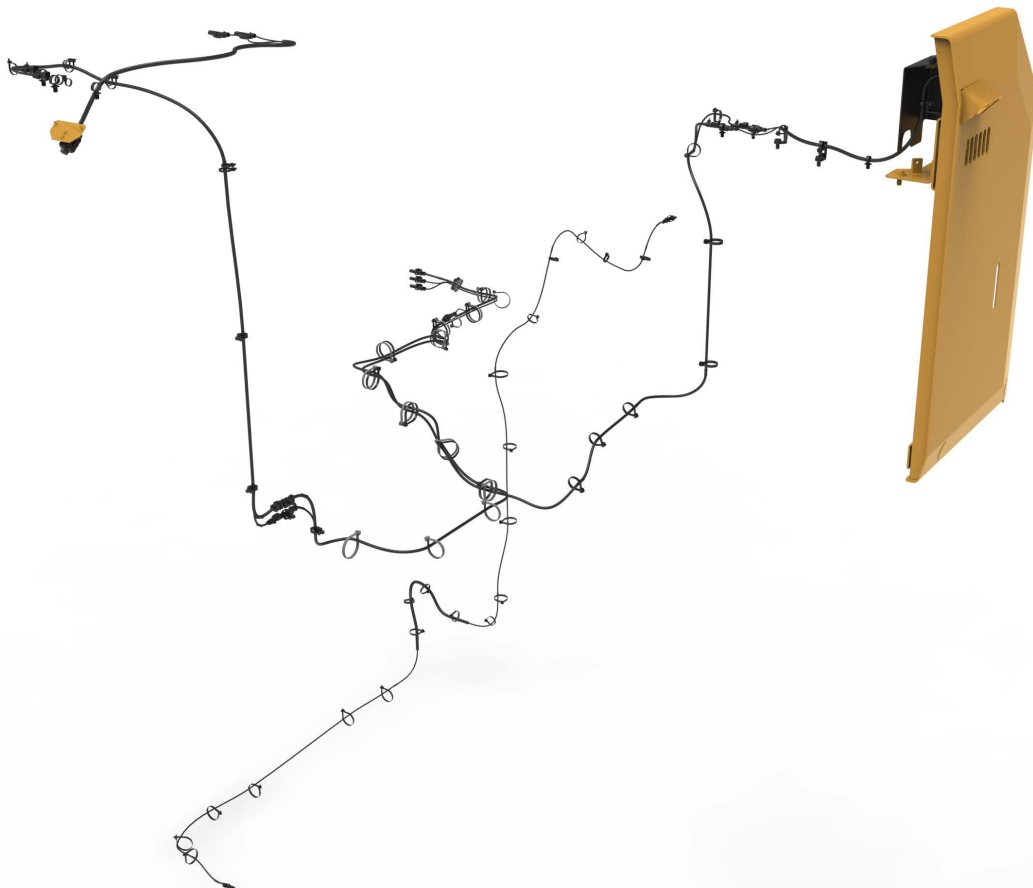
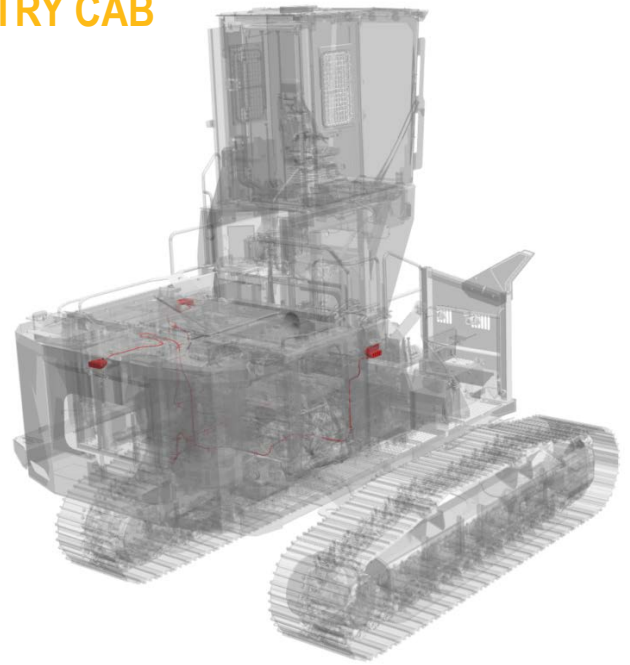
Camera to view the rear of the machine and the right hand side with fixed 48" riser in a rear entry cab. Camera output can be seen on the machine display.



Camera to view the rear of the machine and the right hand side with fixed 72" riser in a rear entry cab.
Camera output can be seen on the machine display.

ATTACHMENT

**CAMERA, REAR & RIGHT SIDE
72" RISER, REAR ENTRY CAB**



Includes 4 LED lights at cab roof,
1800 lumens each on the side entry cab.

ATTACHMENT

LIGHTS, 4, SIDE ENTRY CAB FRONT



Only for use with:
general forestry machine or log loader forestry machine and side entry cab.

ATTACHMENT

LIGHTS, 6, SIDE ENTRY CAB FRONT

Includes 6 LED lights at cab roof,
1800 lumens each on the side entry cab



Only for use with:
General forestry machine or log loader forestry machine and side entry cab

Only for use with: log loader forestry machine and rear entry cab.

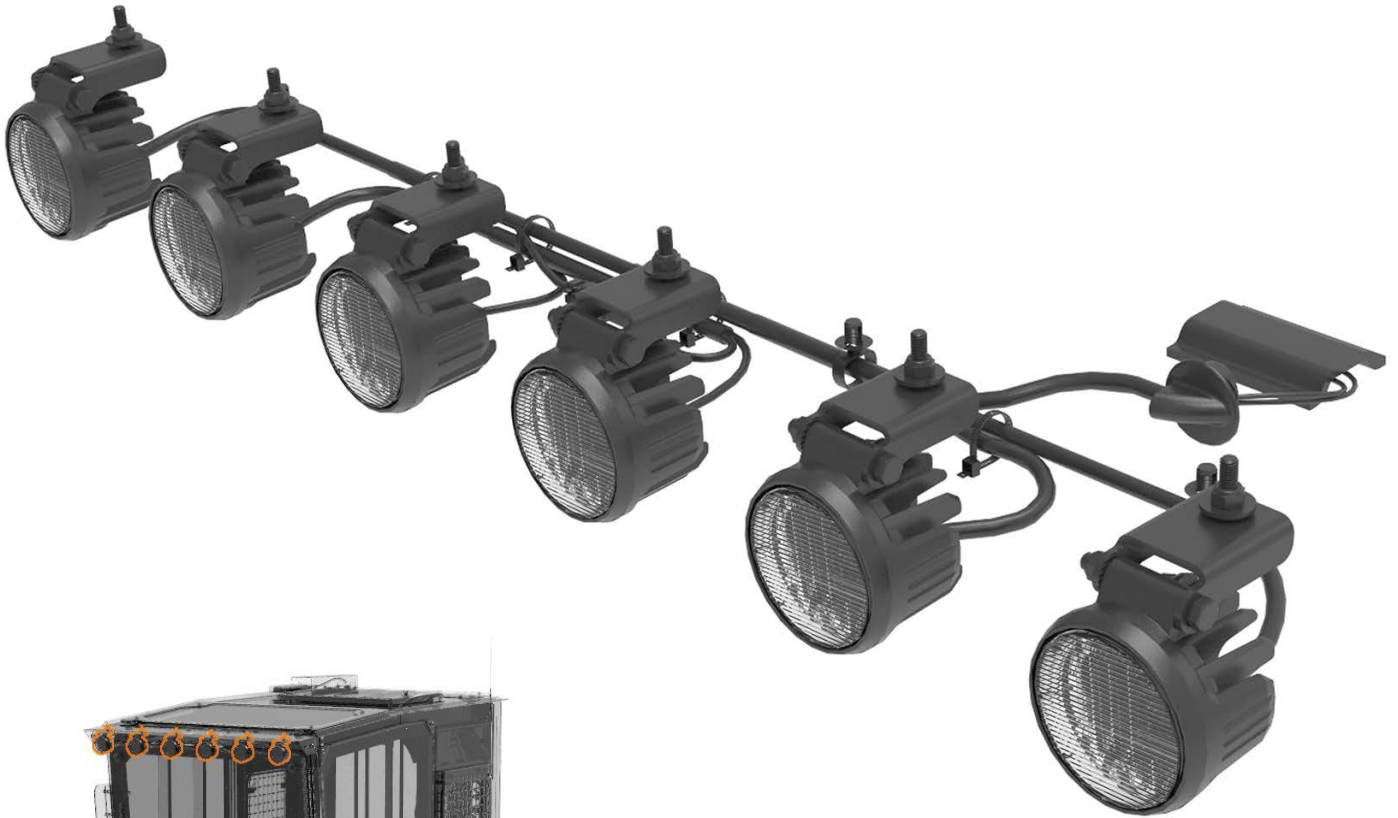


Includes 4 LED lights at cab roof,
1800 lumens each on the rear entry cab.

ATTACHMENT

LIGHTS, 4,
REAR ENTRY CAB, FRONT

Only for use with: log loader forestry machine and rear entry cab.



ATTACHMENT
LIGHTS, 6,
REAR ENTRY CAB FRONT

Includes 6 LED lights at cab roof,
1800 lumens each on the side entry cab.

ATTACHMENT

LIGHTS, 1, SIDE ENTRY CAB, REAR, ADDITION

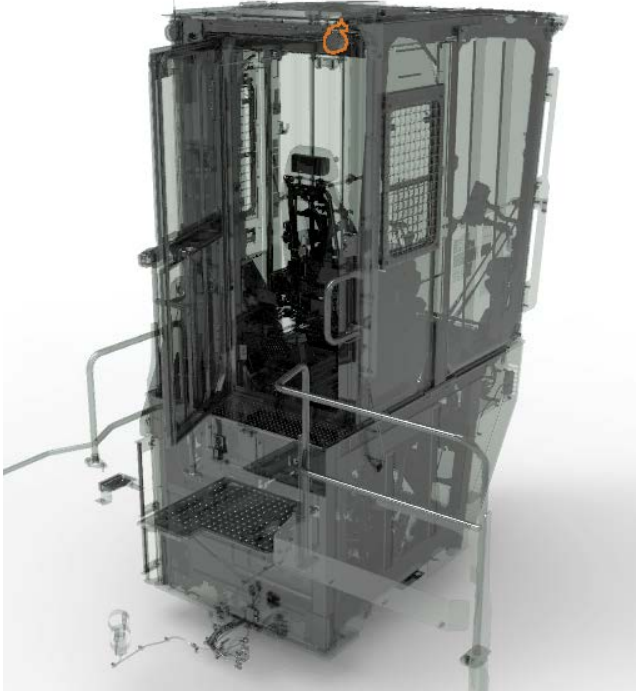
Includes 1 additional LED light on rear left side of cab roof, for a total of 2 LED lights on rear of cab. 1800 lumens each. Lights can be positioned and angled.



Includes 1 additional LED light on rear left side of cab roof, for a total of 2 LED lights on rear of cab 1800 lumens each. Only for use with rear entry cab

ATTACHMENT

LIGHTS, 1,
REAR ENTRY CAB, REAR,





ATTACHMENT

LIGHTS WORKING, TILT RISER, LEFT SIDE

Includes 1 additional outside facing
LED light on 48" cab riser, 1800 lumens.

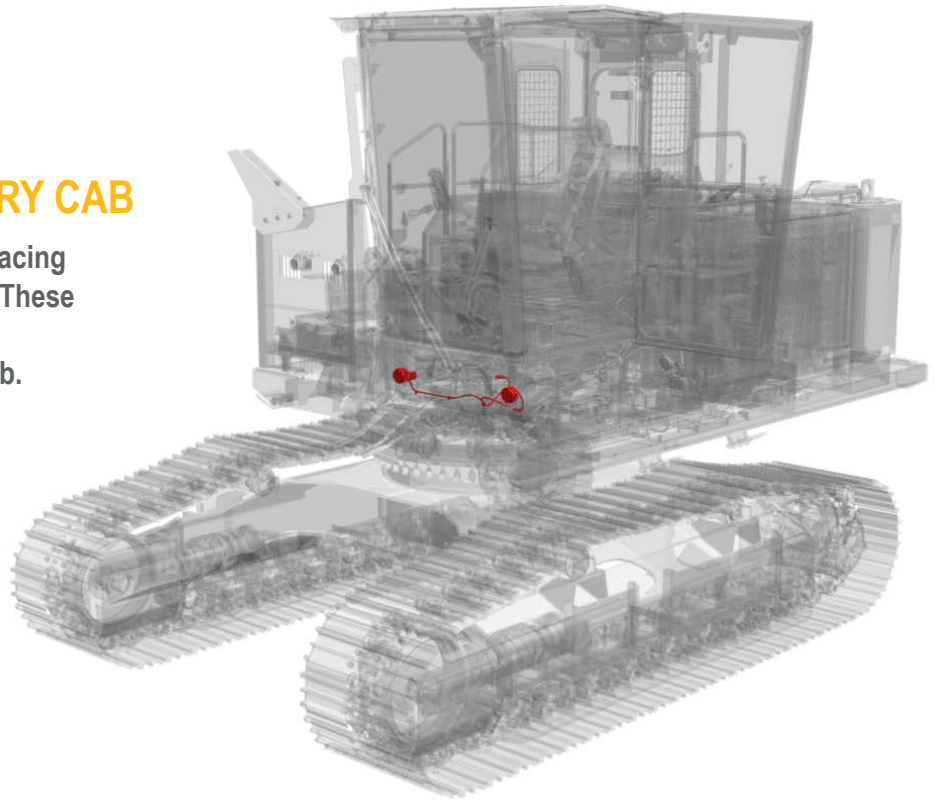
Only for use with
tilt riser, side entry cab,
1.2m (48") bolted, tilt riser,
rear entry cab, 1.2m (48"), easy lock Only
for use with
side entry cab



ATTACHMENT

LIGHTS, 2 22" RISER, SIDE ENTRY CAB

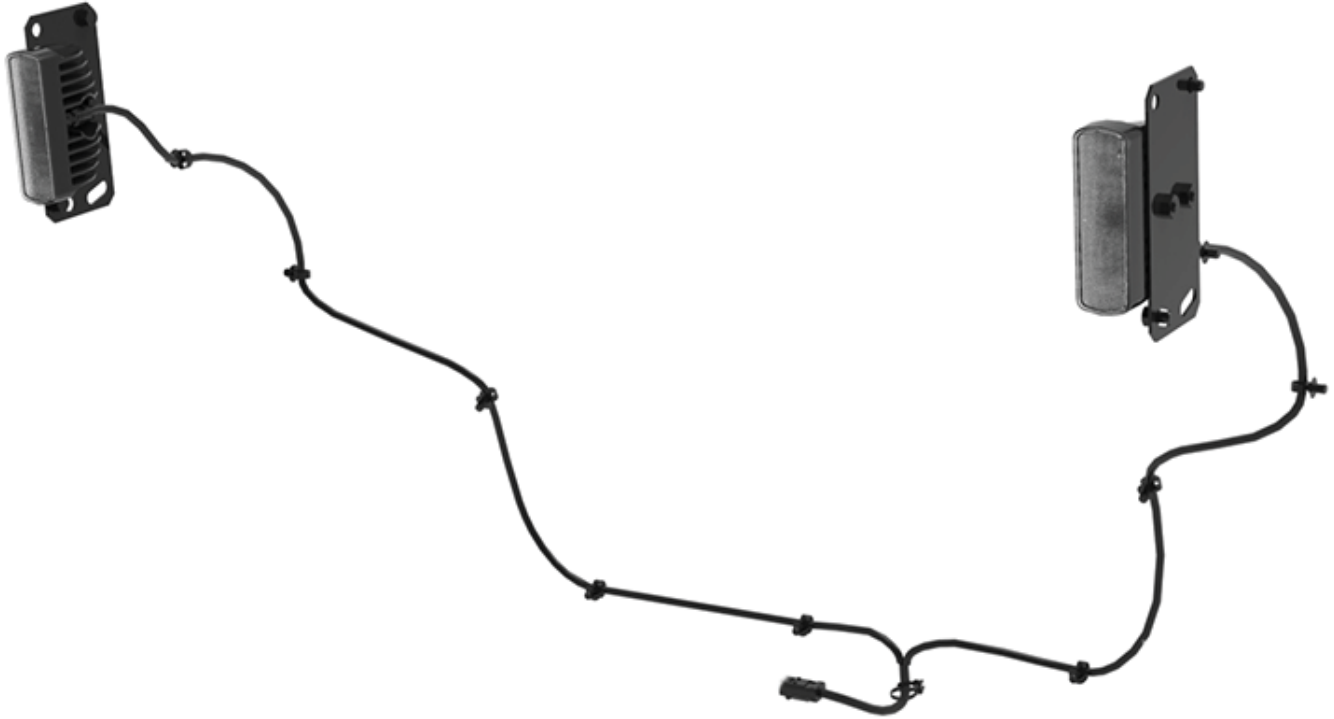
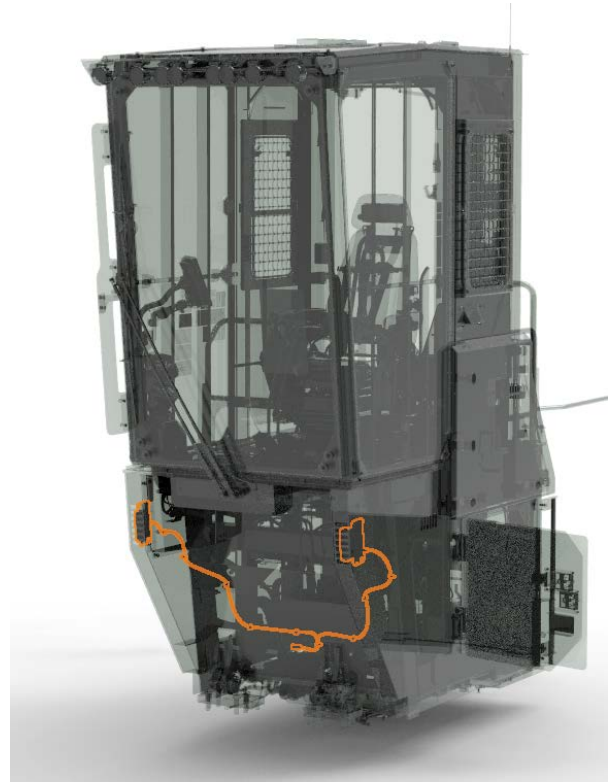
Includes 2 additional forward facing LED light on the 22" cab riser. These lights are 1800 lumens each. Only for use with side entry cab.



ATTACHMENT

LIGHTS, 2, 48" RISER, REAR ENTRY CAB

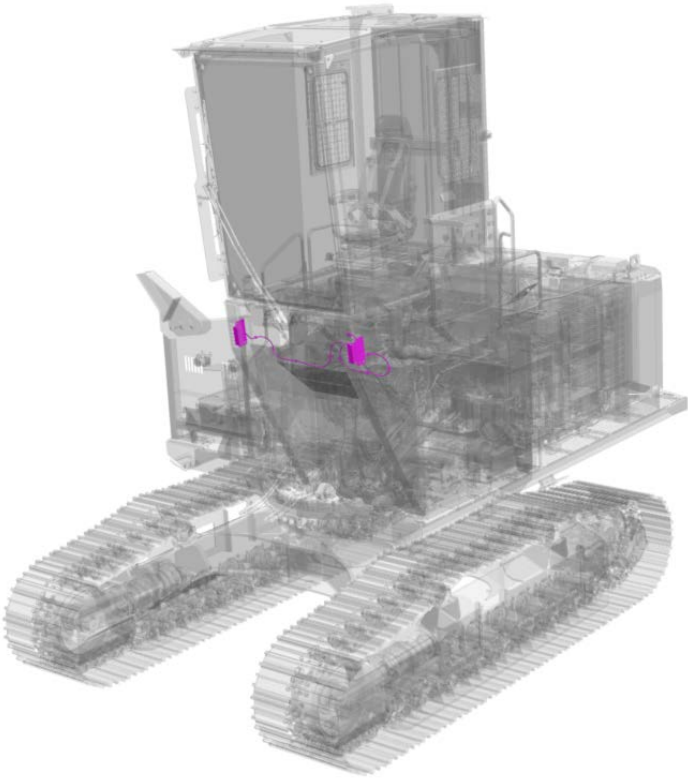
Includes 2 additional forward facing LED lights on 48" cab riser, 1800 lumens each.
Only for use with: Rear entry cab.



ATTACHMENT

LIGHTS, 2, 72" RISER, REAR ENTRY CAB,

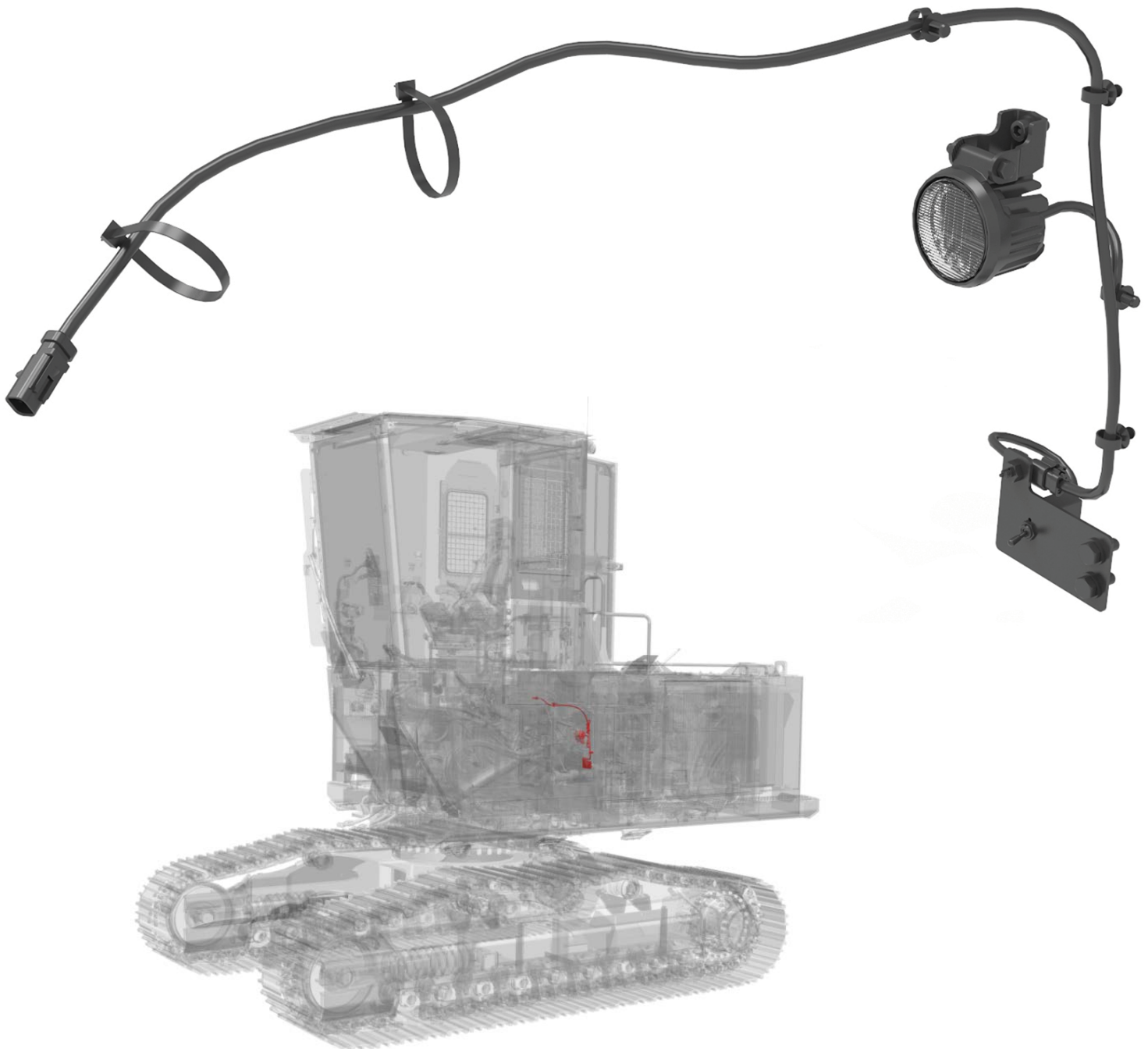
Includes 2 additional forward facing LED lights on 72" cab riser, 1800 lumens each.
Only for use with: Rear entry cab



ATTACHMENT

LIGHT, 1 ADDITIONAL 48" / 72" BOLTED RISER, REAR ENTRY CAB

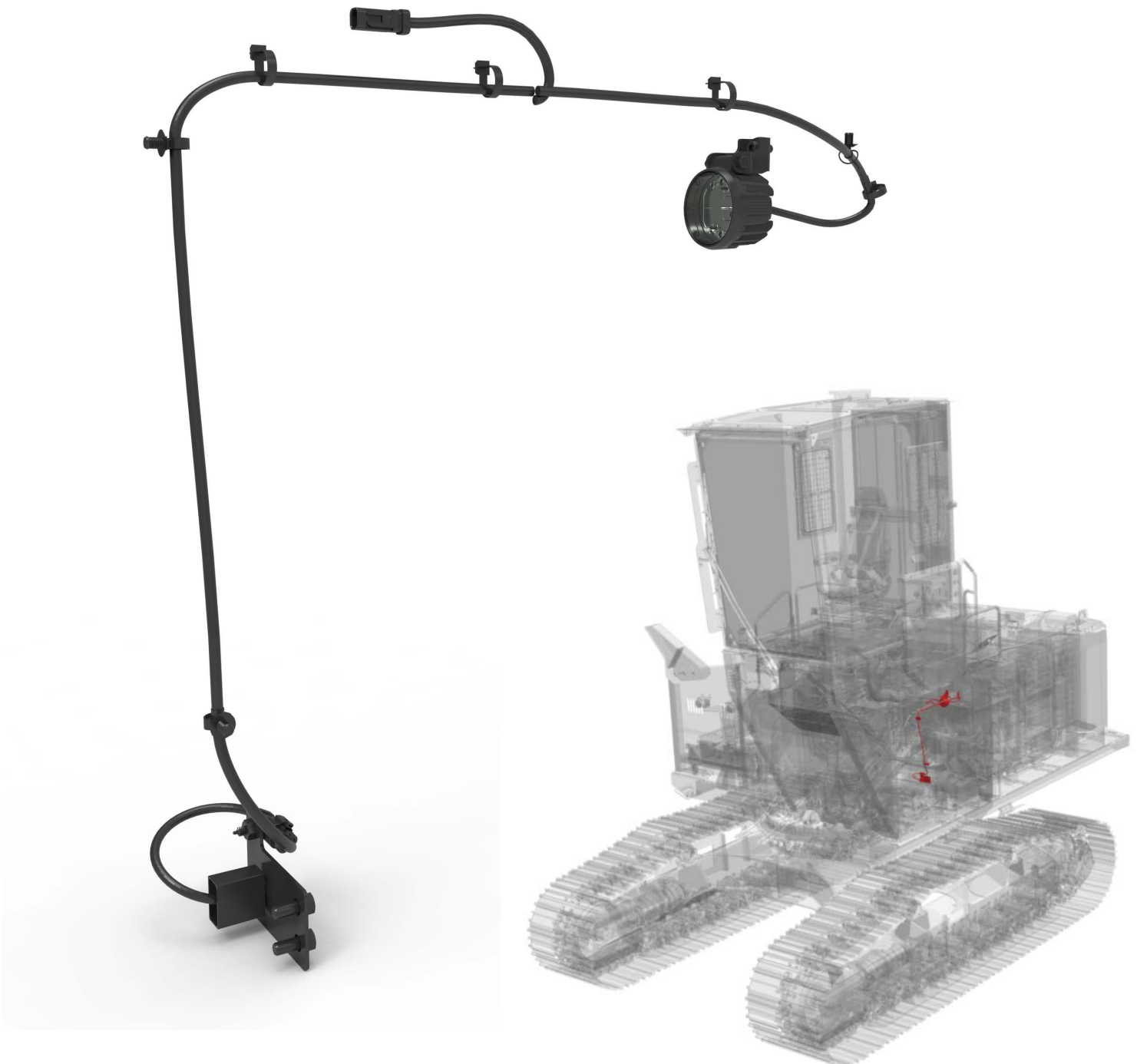
Includes 1 additional LED service light located inside the 48" / 72" cab riser, 1800 lumens, and activation switch.
Only for use with tilt riser, rear entry cab, 1.2m (48"), bolted



This is an additional service light located inside the 48"/72" cab riser with easy lock. It includes activation switch and is 1800 lumens.

ATTACHMENT

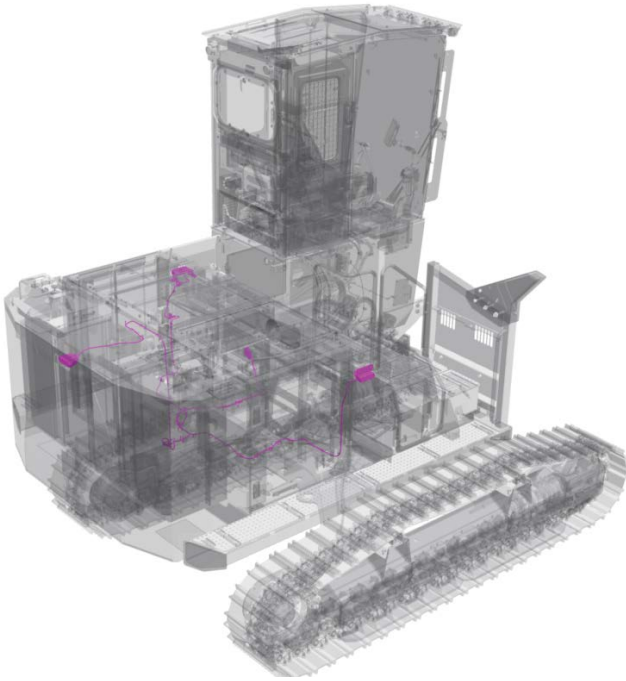
LIGHTS, 1 ADDITIONAL
48" / 72" EASY LOCK RISER, REAR ENTRY CAB



ATTACHMENT

LIGHTS, SURROUND, ADDITIONAL

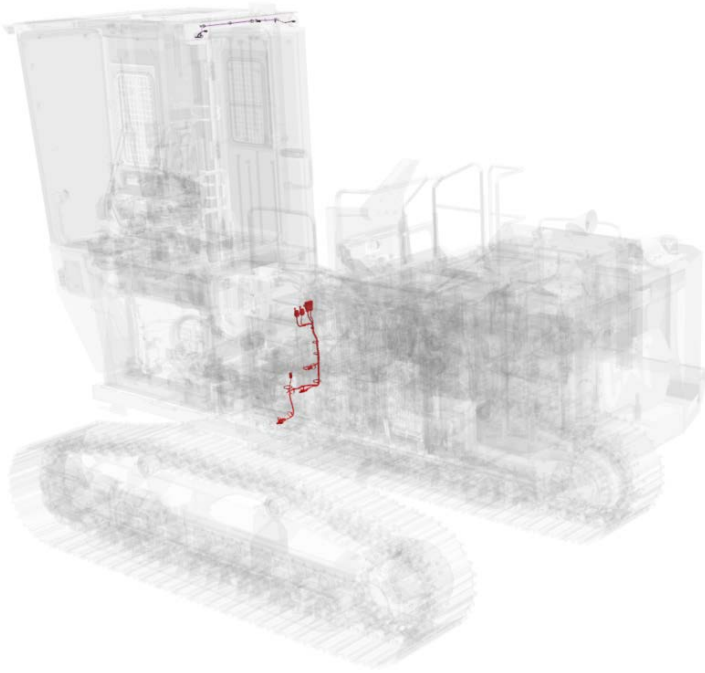
Includes 3 additional LED working lights on the machine, 1800 lumens each. One light on left side of machine, one on right side, and one on counterweight. These three light help illuminate working areas all around the machine for better visibility and safety.



This is the wiring for the relays helps program through the cab monitor. The functionalities like, 4 joystick buttons to turn ON / OFF, Control 3rd party devices (CB radio, VHF radio, auxiliary or beacon lights). The relays can manage current up to 5A (2 relays) and 13A (2 relays).

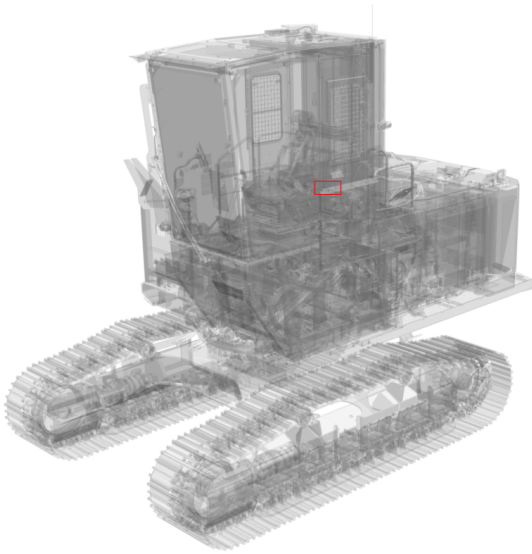
ATTACHMENT

WIRING, AUXILLARY RELAY



ATTACHMENT

NETWORK MANAGER, STANDARD PRODUCT LINK PLE643 / PLE 683



Network manager collects hours, utilization, health and productivity information as well as provides support for remote services and other advanced features.

When paired with a separate Product Link radio this information as well location is transmitted for viewing in Product Link user applications.

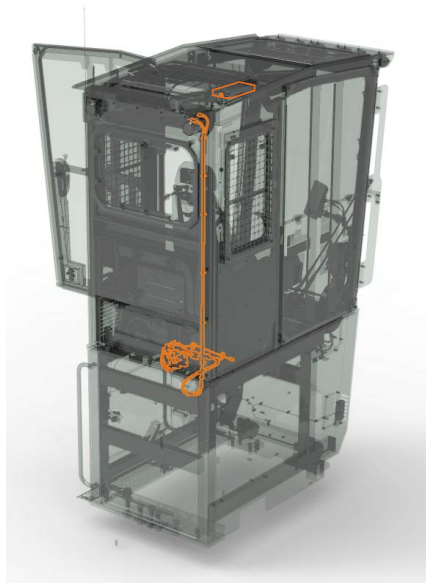


PRODUCT LINK™

Product Link enables the remote transmission of information about the location, operation, and condition of your equipment. Efficiently and effectively monitor the performance of your assets to help keep your jobs on schedule, maintain equipment condition, and reduce the costs of owning and operating your fleet. Availability varies by country.

please reference <https://Dealer.cat.com/PL/Certification> for certified countries. Please contact your Caterpillar marketing representative with questions.

Product Link Elite series PL083 uses cellular or satellite network to transmit location, utilization and health information for viewing in Product Link user applications. PLE will communicate over cellular whenever available. For use in areas with poor or no cellular coverage.



ATTACHMENT

PRODUCT LINK™ CELLULAR /SATELLITE, PL 083

ATTACHMENT

WIRING PRODUCT LINK™ SIDE ENTRY CAB

Side entry cab wiring connection for the product link PL083 with Cellular or Satellite capability.



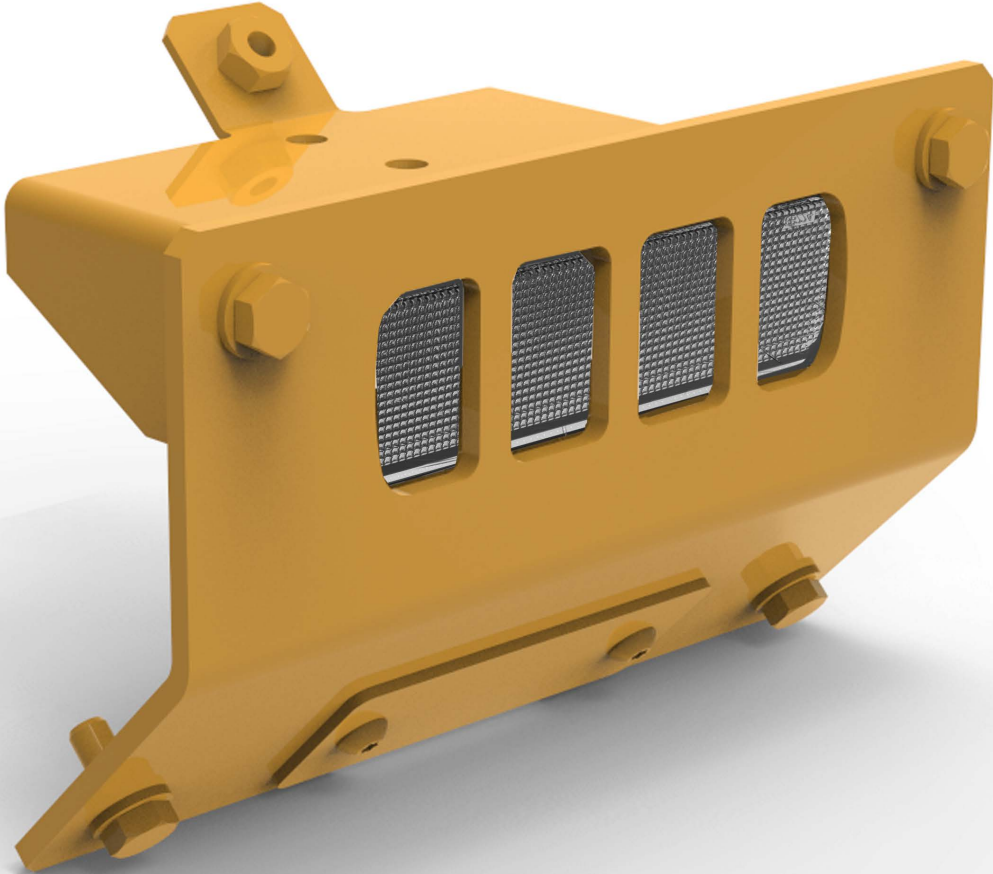
ATTACHMENT

WIRING PRODUCT LINK™ REAR ENTRY CAB

Rear entry cab wiring connection for the product link PL083 with Cellular or Satellite capability.

ATTACHMENT COVER, R CAMERA, W/ CTWT LIGHT

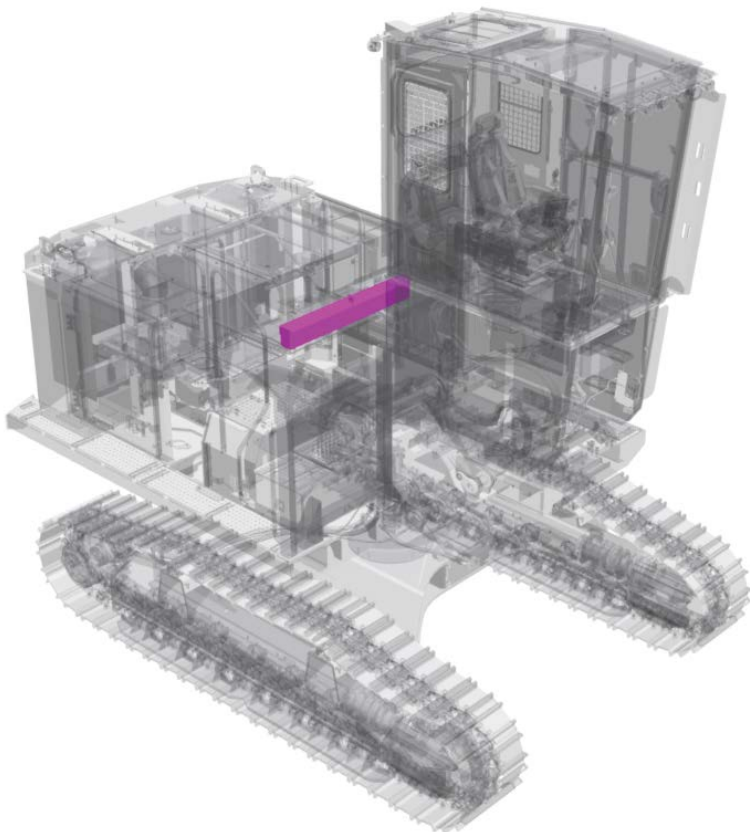
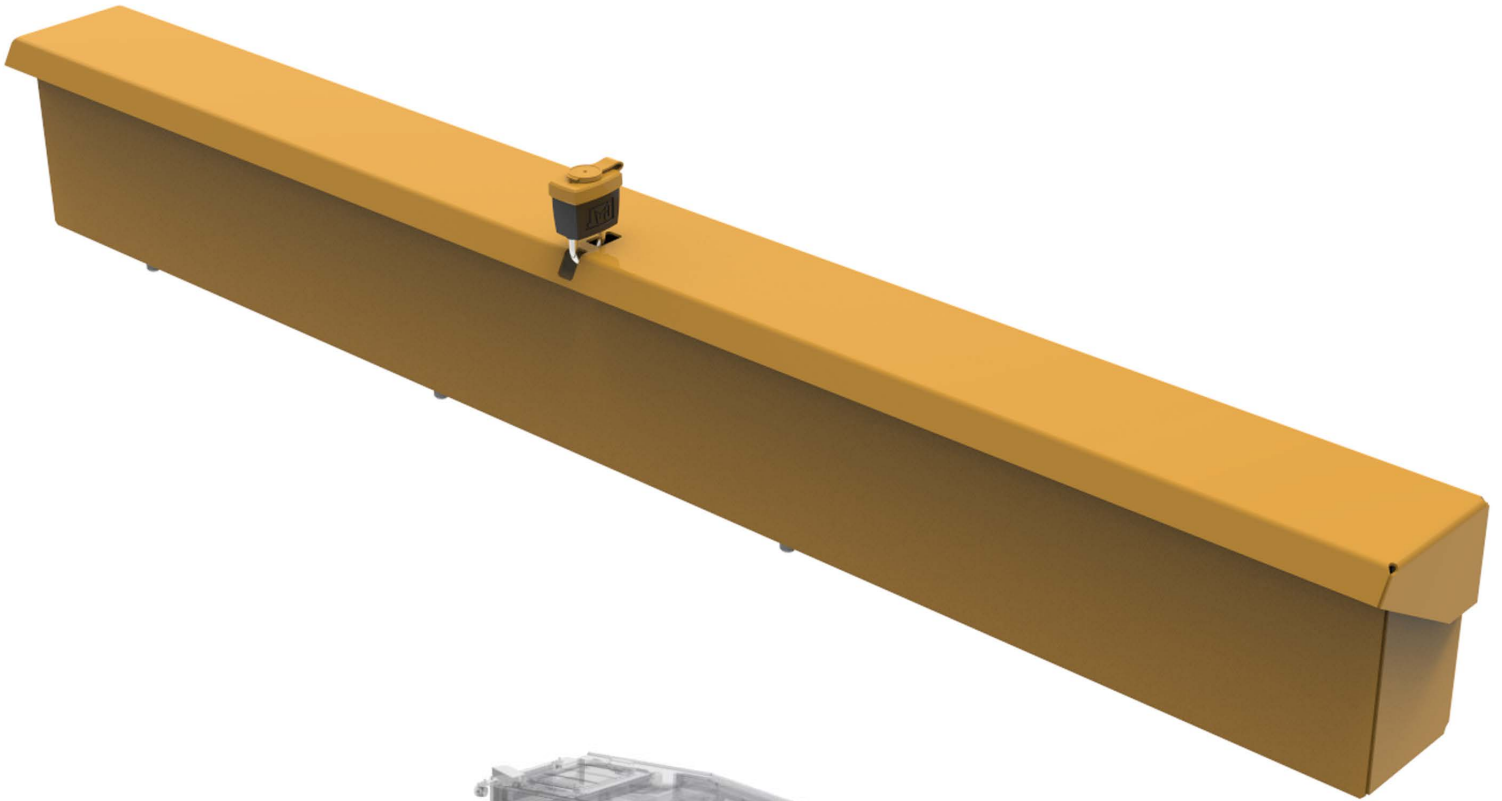
Protective cover for rear view
camera on counterweight with light



ATTACHMENT

SAW BOX STORAGE, 50"

A dedicated storage box for 50" saw bars. This storage box is located on the central platform.



ATTACHMENT

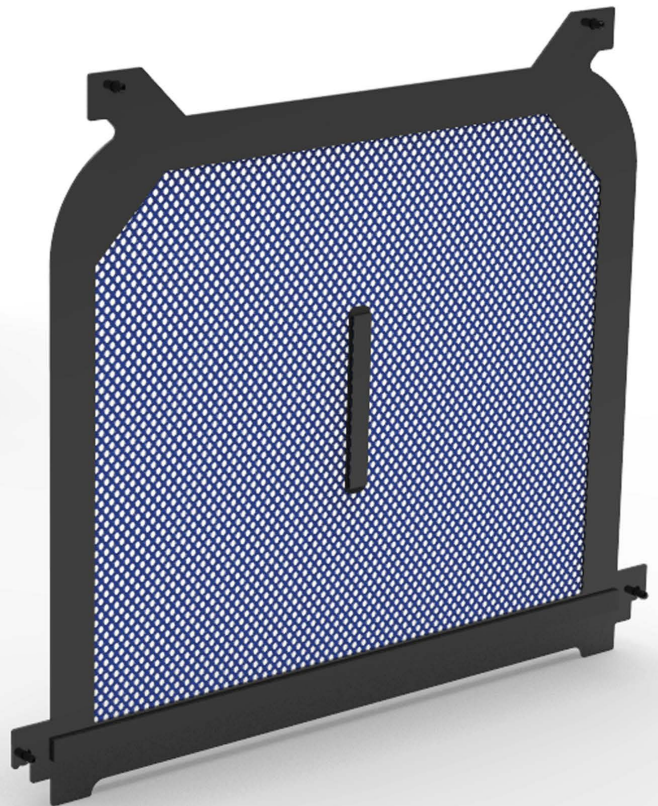
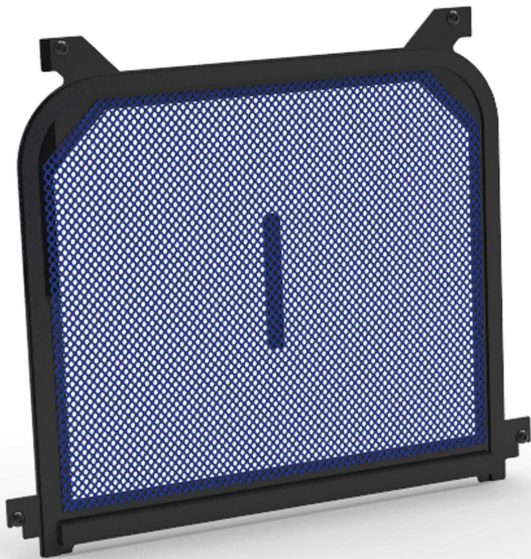
LOCK, PARKING, LOG LOADER

Utilized for shipping with stick detached (bracket for holding stick cylinder in position when stick is detached).



The bug screen prevents bugs from entering the cab when the rear windows are opened for ventilation.

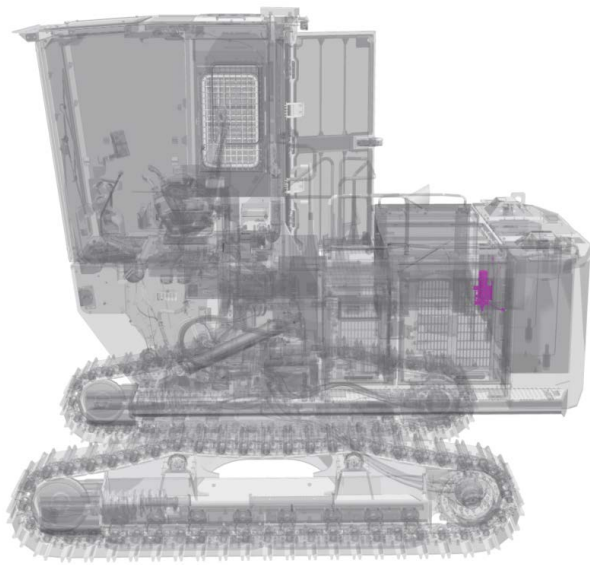
ATTACHMENT BUG SCREEN



ATTACHMENT

STARTING AID, ETHER

Optional ether assist package
for cold temperature starting.



ATTACHMENT

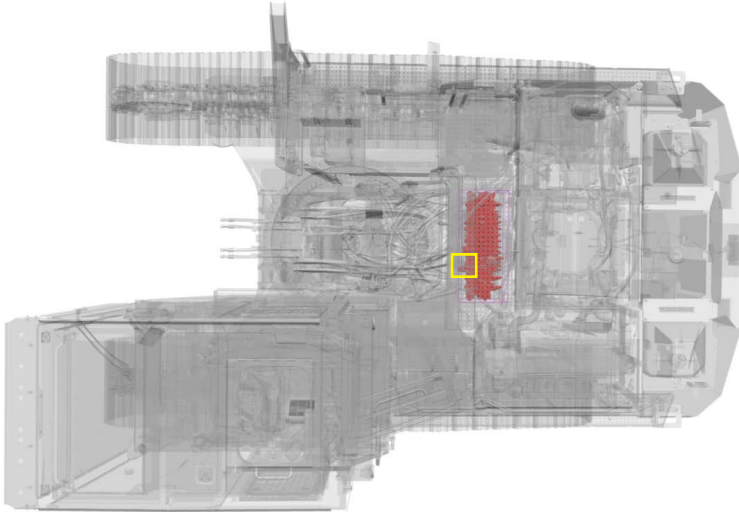
BLOCK HEATER, 120V

Starting kit, block heater,
120V for engine



ATTACHMENT **SENSOR, PRESSURE, STANDARD**

It is a sensor that helps regulate the pressure built up to actuate different implements. The standard sensor regulates upto 12Mpa.



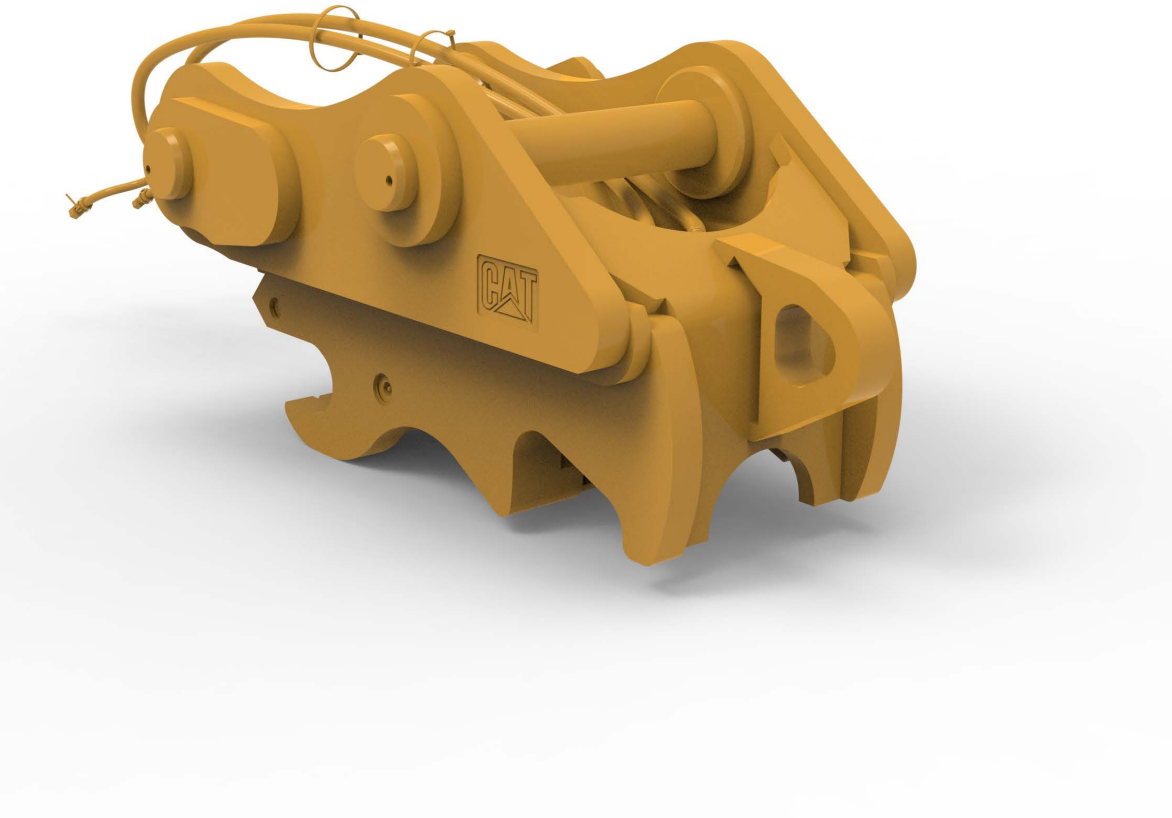
This pressure sensor helps build the pressure in the valve to around 25Mpa and enables the bucket curl to attach to the quick coupler or pin grabber

ATTACHMENT **PRESSURE SENSOR, QUICK COUPLER**

This coupler is for use when ordering an installed bucket. This includes a set of pins to attach the coupler to the stick for the DB family bucket linkage

ATTACHMENT

COUPLER, PIN GRABBER W/PINS



ATTACHMENT

COUPLER, PIN GRABBER W/O PINS

This coupler is for use when not ordering an installed bucket. This includes pin grabber coupler. No pins.

ATTACHMENT

STORAGE PROTECTION (EXPORT)

Machines from the factory have been sprayed with corrosion protection coating. This product is added while shipping and for extended storage periods. This product is power washed with soap prior to shipment to the customer.

ATTACHMENT

STORAGE PROTECTION FROM COGON GRASS (EXPORT)

ADSD-N machine is sprayed with a coating to avoid the adhesion of Cogon-grass which is listed on invasive alien grasses in US. This is additional cost to spray.



WORK TOOLS

GRAPPLE, GLL 55, LOG LOADING

This has a maximum opening of 55 inches (1397mm) and a minimum of 5 inches (127mm). The weight is 2860 Lb (1297Kg).

This grapple can be used with 538, 548, 558, 568

WORK TOOLS

GRAPPLE, GLL 60, LOG LOADING

This has a maximum opening of 60 inches (1254mm) and a minimum of 5 inches (127mm). The weight is 3060 Lb (1388Kg).

This grapple can be used with 548, 558, 568



Caterpillar currently offers two different heel variations for Log Loaders, one heel that is for use on under/under Log Loader configurations and one heel that is used on over/under Log Loader configurations.

In the Under / Under configuration the tool or heel cylinder is located on the bottom of the stick and the tool or heel cylinder is located on the top side of the stick in an over/under configuration.

Cylinder and Connecting Lines available from Antares

WORK TOOLS

HEEL UNDER / UNDER, FABRICATION



The under / under configuration is primarily used for truck loading and shovel loading applications, as well as with log loader configurations that utilize heel and processor installations. The over / under heel configuration is primarily used in millyard application to achieve higher stacking height for inventory log decks or infeed areas. Gaining decking height in log yard applications can be a strong advantage in use of yard space, reducing the distance and time required for reclaiming logs from inventory and maximizing log inventory capability.

WORK TOOLS

HEEL UNDER / UNDER



WORK TOOLS

HEEL OVER / UNDER

The over / under heel configuration is primarily used in millyard application to achieve higher stacking heights for inventory log decks or infeed areas. Gaining decking height in log yards can be a strong advantage of use of the yard space, reducing the distance and time required for reclaiming logs from inventory and maximizing log inventory capability.

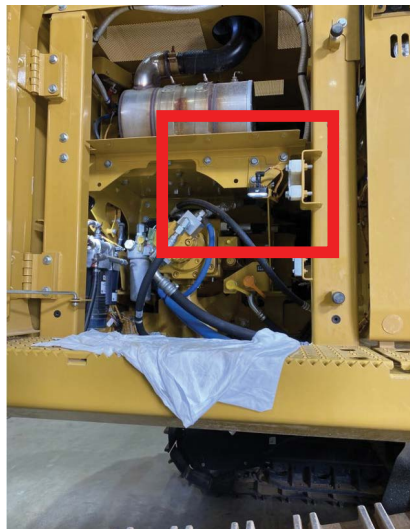
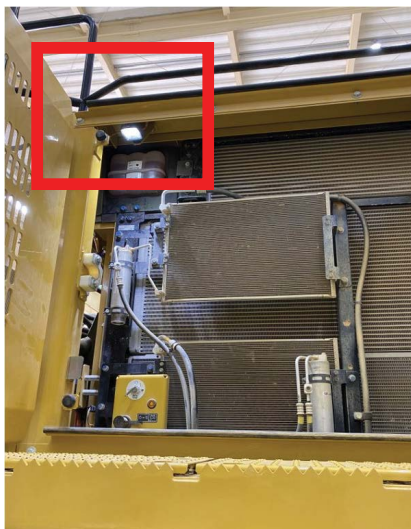
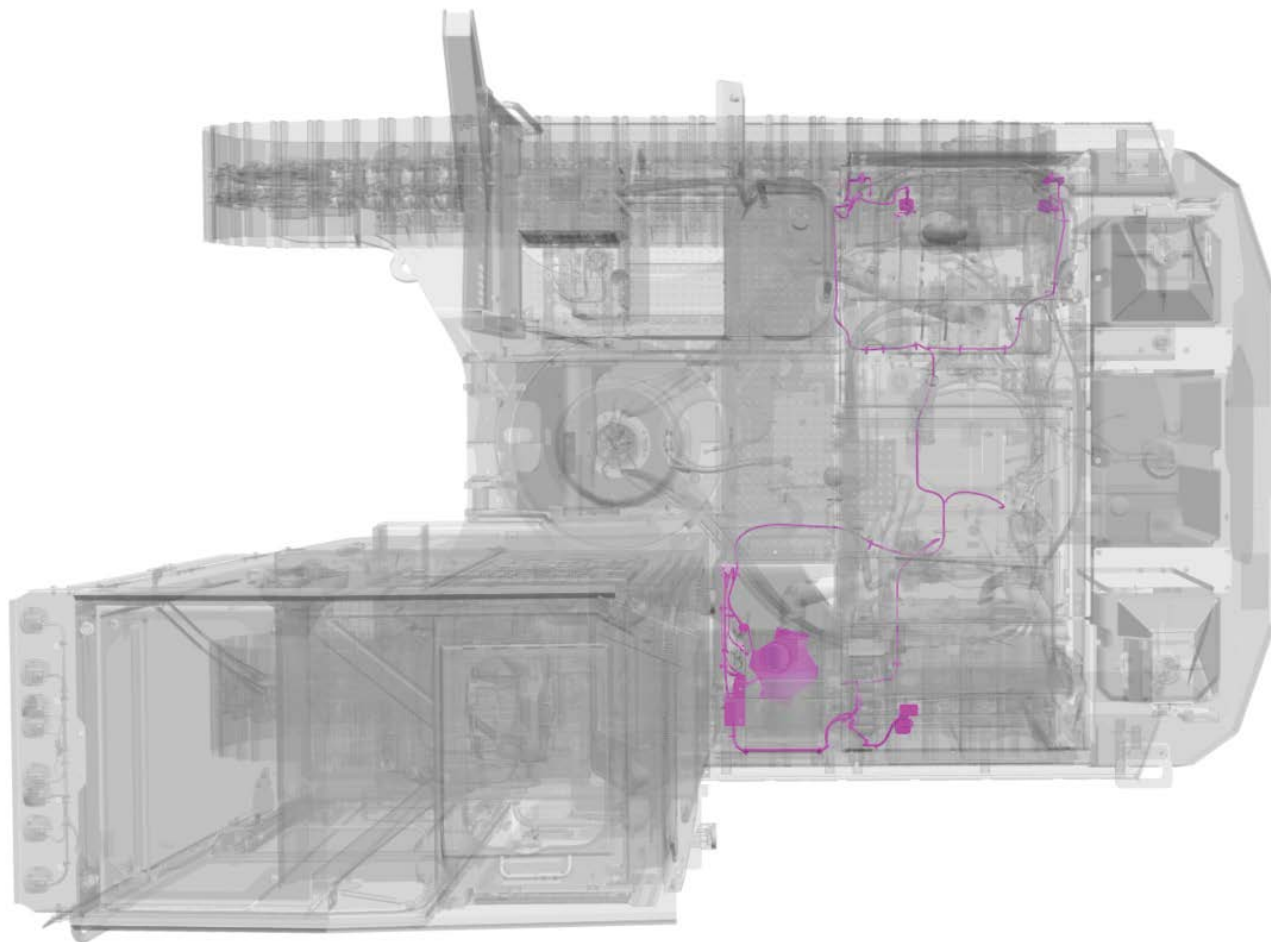


AFTERMARKET KITS

INSPECTION LIGHT KIT

Inspection lighting kit provides additional lights in the cooling package, hydraulic pump, and electrical compartment for improved safety and visibility in low light conditions.

Approximate installation time: 4-5 hours



AFTERMARKET KITS

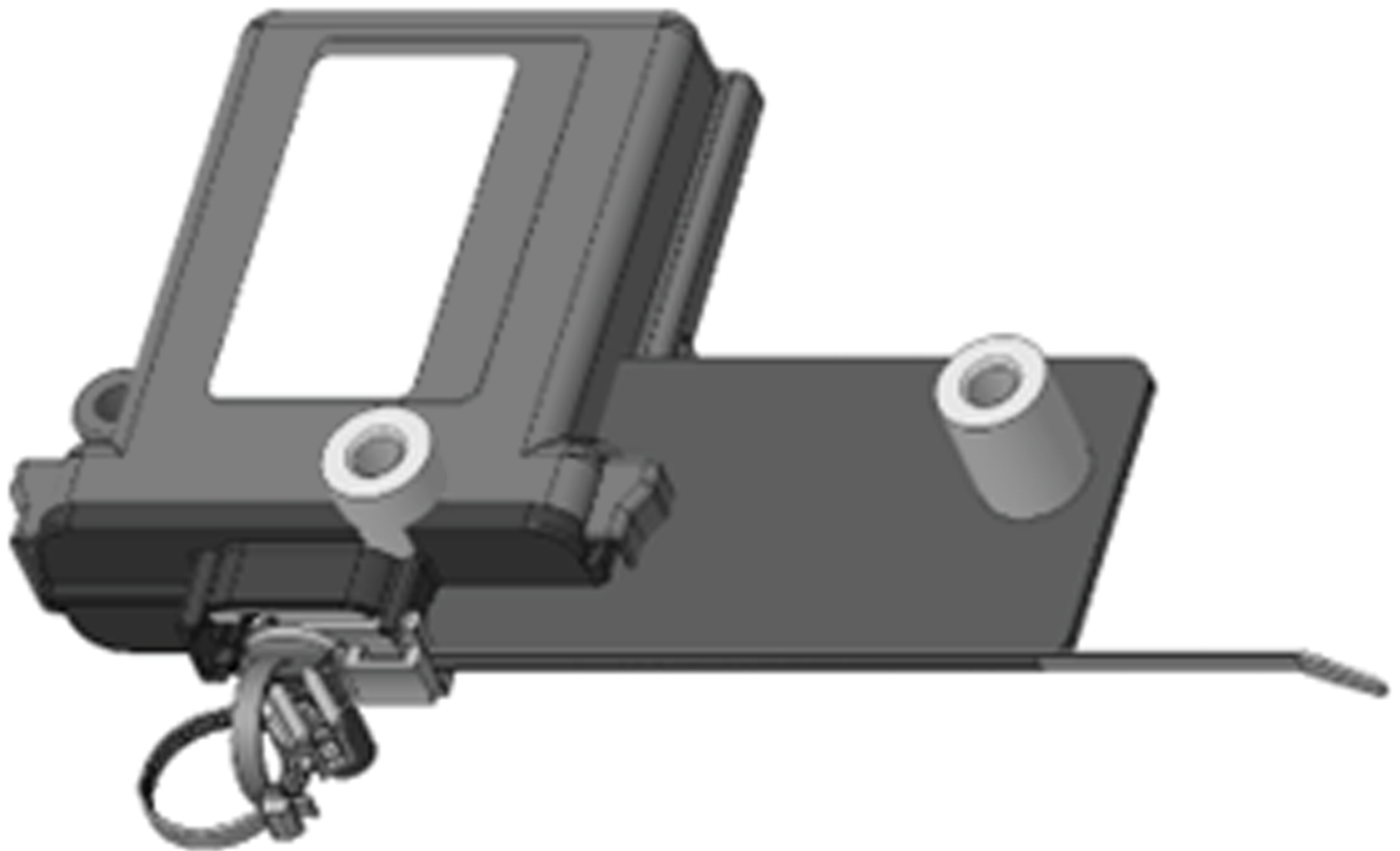
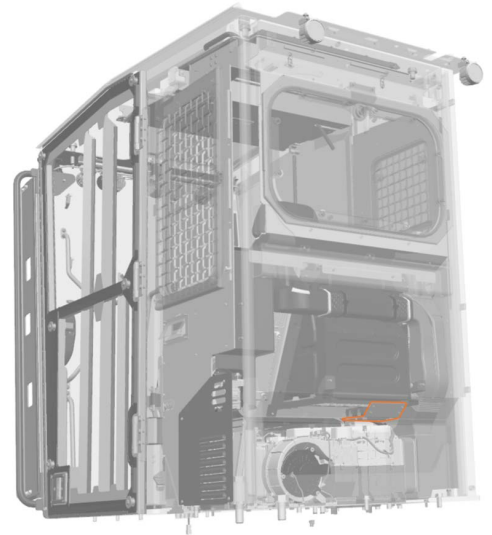
SIGNAL CONVERTOR, SIDE ENTRY CAB

This bracket holds the signal convertor which enables the processor head to communicate with machine. This bracket is located behind the seat under the lunch box cover.

INCLUDES: List of part numbers including hoses, tubes, brackets, straps, cables, clips, hardware needed for proper installation.

REQUIRES: Factory-shipped machine, Side Entry Cab, installed with harvester arrangement.

Approximate installation time: 2-3 hours. Only for use with: 538, 548, 558, 568



AFTERMARKET KITS

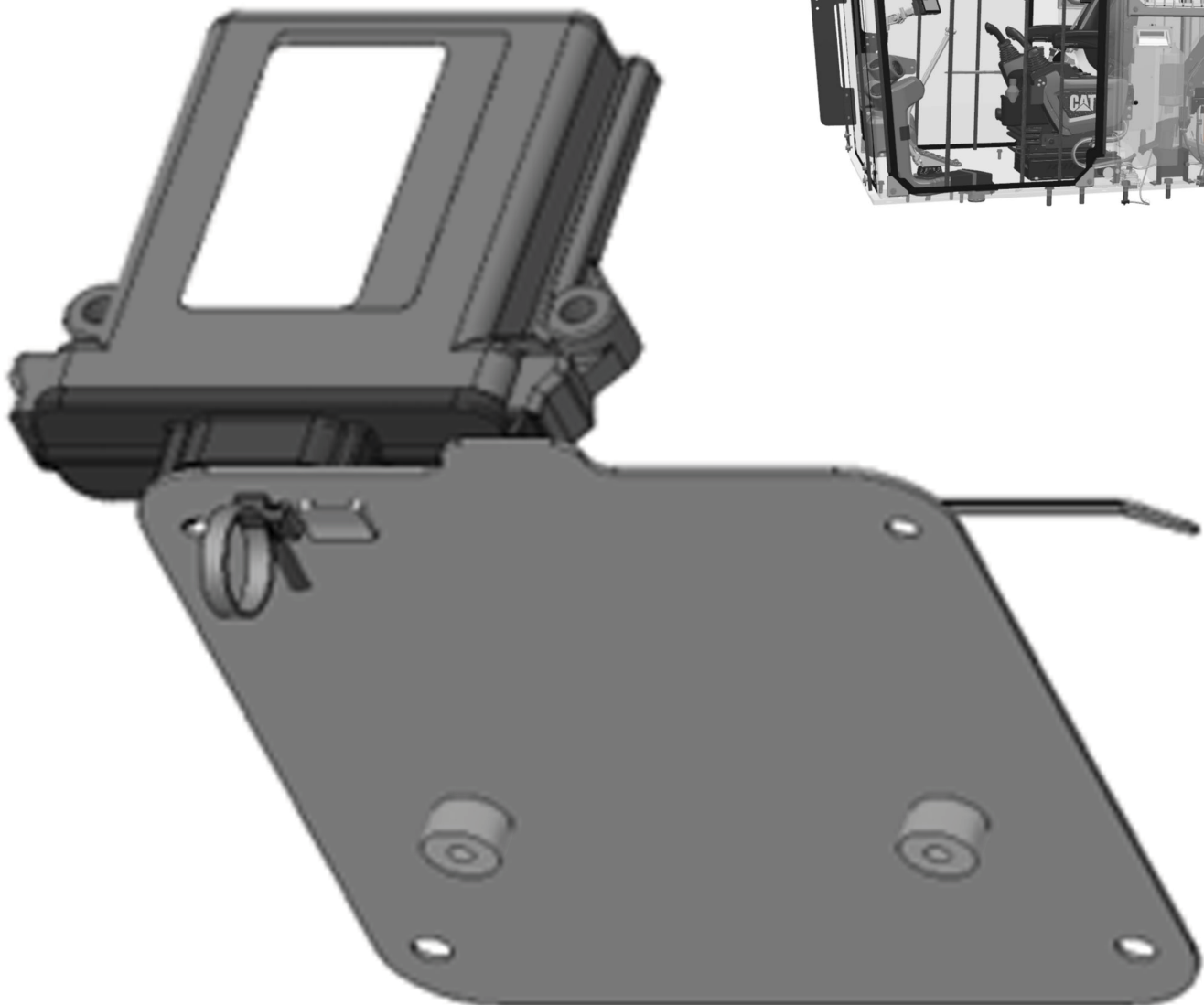
SIGNAL CONVERTOR, REAR ENTRY CAB

This bracket holds the signal convertor which enables the processor head to communicate with machine. This bracket is located behind the seat under the lunch box cover.

INCLUDES: List of part numbers including hoses, tubes, brackets, straps, cables, clips, hardware needed for proper installation.

REQUIRES: Factory-shipped machine, Rear Entry Cab (REC), installed with harvester arrangement.

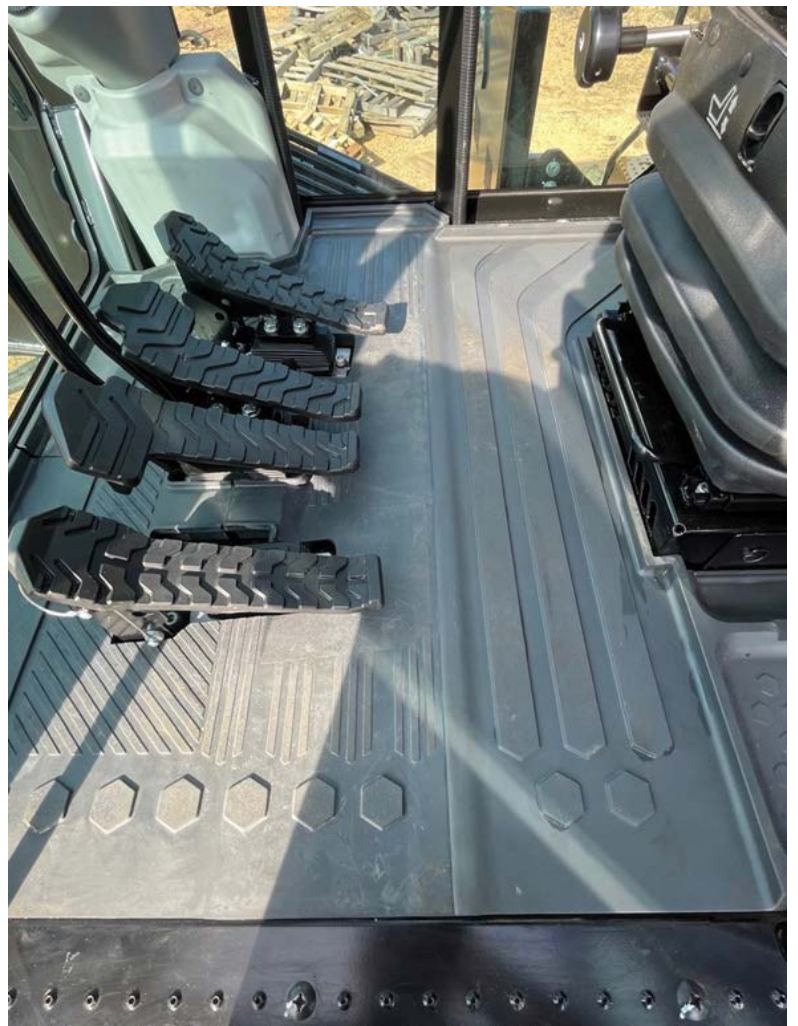
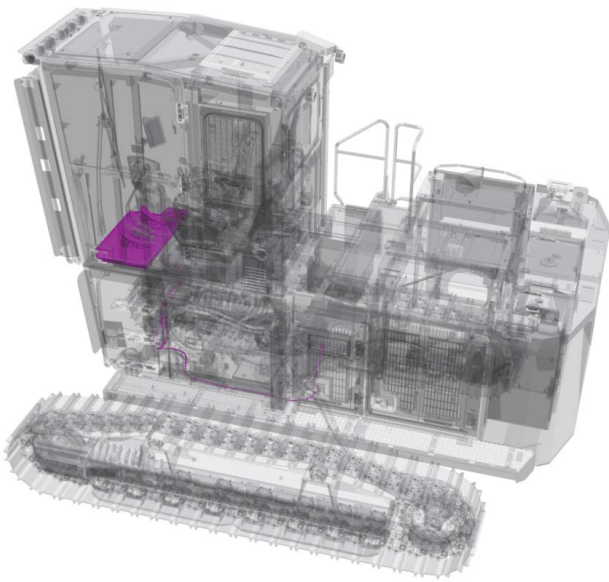
Approximate installation time: 2-3 hours. Only for use with: 538, 548, 558, 568



AFTERMARKET KITS

FOOT PEDAL SWING

This kit is utilized together with the optional software enabled attachment for customizable joystick controls. The foot pedal swing kit includes 2 auxillary pedals to be mounted on the cab floor to allow the machines swing to be controlled by foot pedals. The travel pedals are still available to use for machine travel. This kit utilized together with the option for the customizable joystick controls feature to allow assignment of various implement functions to the x-y axis of joysticks, as well as auxillary pedals. Customized joystick patterns, including forestry or knuckle boom style controls can be setup for selection along with standard ISO or excavator style controls for easily moving back and forth in the monitor depending on operator preference. Approximate installation time: 4-5 hours. Only for use with side entry 22" and 48" riser



AFTERMARKET KITS

POWERCLAM / BNT INSTALL

The Power Clam configurations, use 0, 1 or 2 outriggers kits depending on application. BNT (Butt & Top) grapple also uses the same kit and has 2 outriggers attached on it.

BNT grapple is primarily used for loading long logs onto trucks, whereas Power Clam is utilized for loading short wood onto trucks.

INCLUDES: Converter, wiring, hardware needed for proper installation.

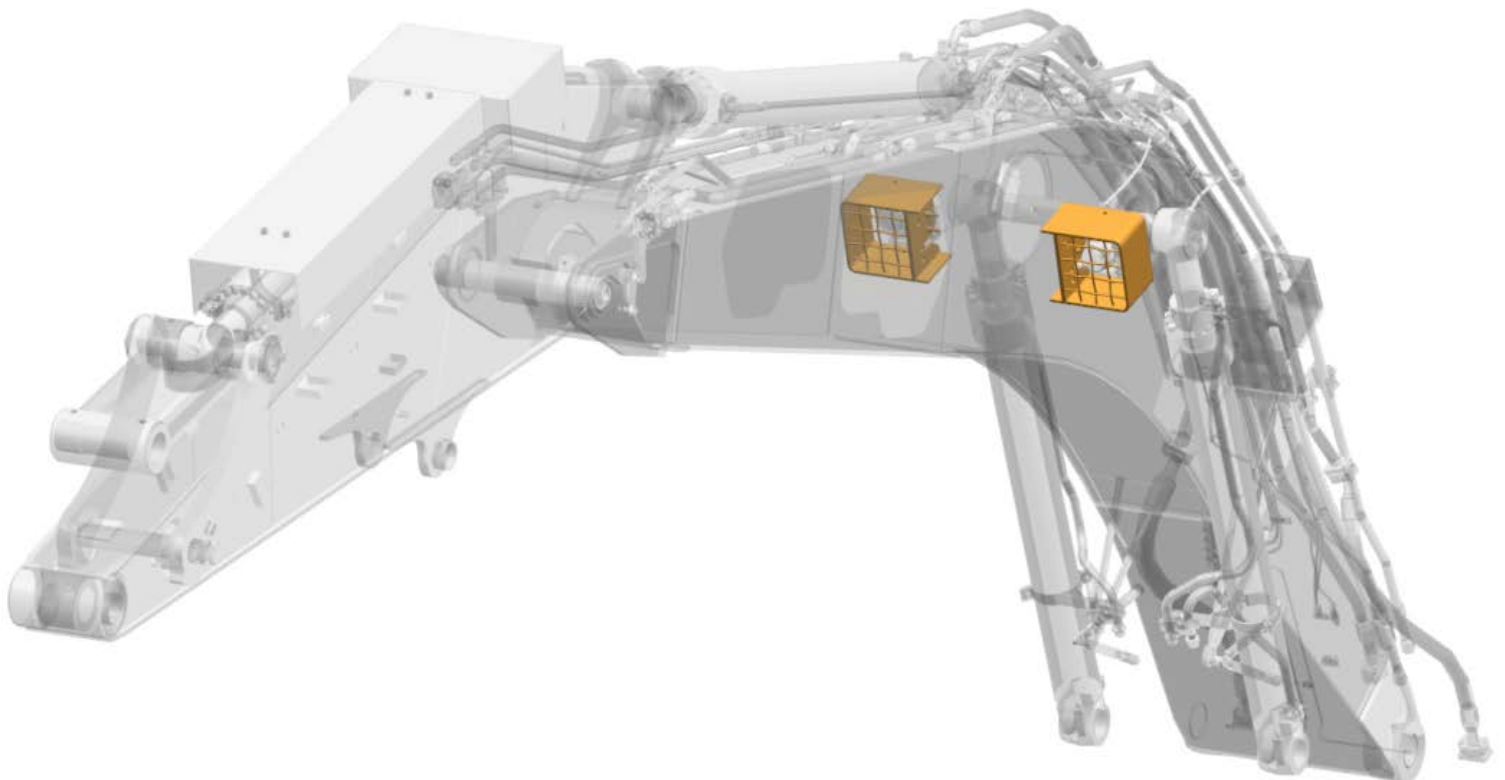
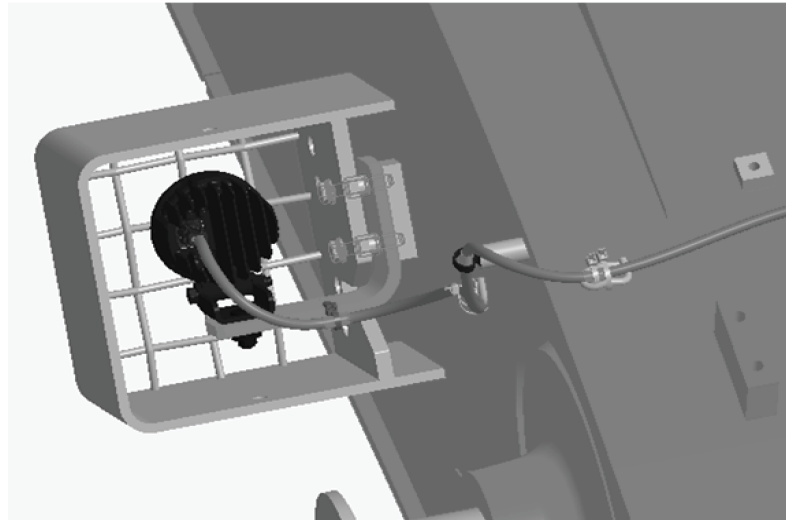
ONLY FOR USE WITH: 568, 568LL



The boom light guards protects the boom lights from damage on roadbuilder configuration machines, this is beneficial for protecting the lights from impacts from tree limbs materials, as well as during machine transport. Approximate installation time: 1-2 hours only for use with: 538, 548, 558, 568

AFTERMARKET KITS

LIGHT GUARD

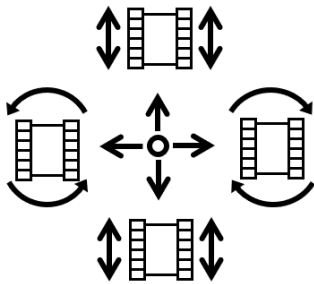


SOFTWARE ENABLED ATTACHMENTS

JOYSTICK STEER

The joystick Steer mode (JSS) is an optional feature which allows travel to be controlled by left hand joystick to increase operator comfort. Operator can select joystick steering when desired or use the standard travel pedals.

LEFT JOYSTICK



Joystick steer mode active

If JSS is activated, travel pedal / lever will be cancelled.

RIGHT JOYSTICK



Thumbwheel*

*Thumbwheels will be assigned for Left J/S operation when JSS mode is Active.

Vertical Slider Joystick

Left

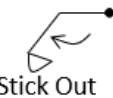


Swing Right



Swing Left

Right



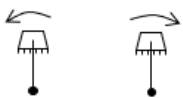
Stick Out



Stick In

SVAB/ Horizontal Slider Joystick

Left

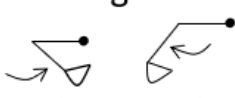


Swing Left



Swing Right

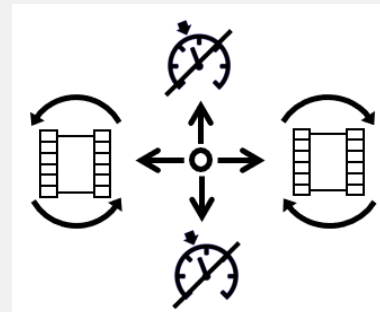
Right



Stick In



Stick Out



The cruise control mode helps to keep the machine in motion forward or backward without constantly pressing on the joystick over longer distance of travel.

SOFTWARE ENABLED ATTACHMENTS

SWING ALARM

This safety feature turns on travel alarm during swing operation. This is an addition to the travel alarm which already exists on all machines.

The Swing alarm can be switched off using the cancel switch. The alarm can be re-activated after the operation is stopped. The machine detects the alarm for the travel and swing separately.



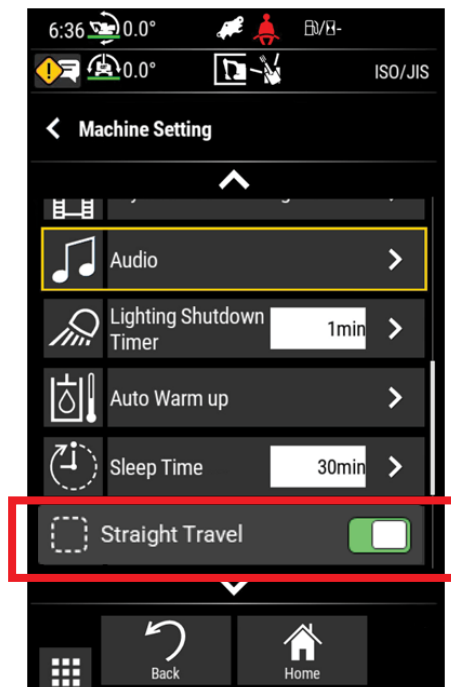
SOFTWARE ENABLED ATTACHMENTS

ADVANCED IMPLEMENT AND TOOL PRIORITY

This optional feature allows the ability to set advanced level priorities for implement control movements, as well as turning on and off straight travel configuration, through CAT electronic technician (ET), when installed.



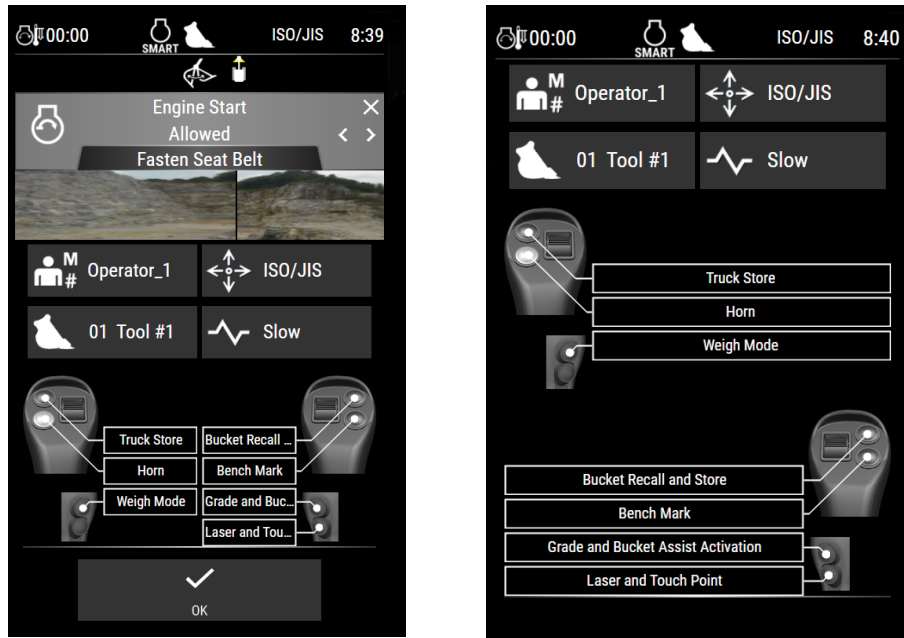
Setting Straight Travel.
The travel ON / OFF can be set up from the display.
Shortcut / Joystick button can also be assigned for this function.



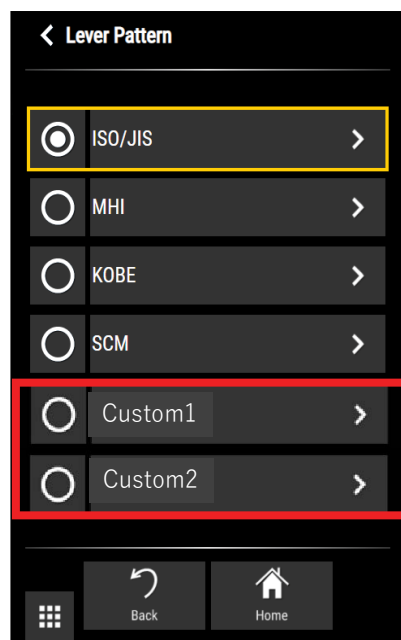
SOFTWARE ENABLED ATTACHMENTS

CUSTOM JOYSTICK

This optional feature allows the capability to setup customizable joystick patterns using CAT Electronic Technician (ET). Customized patterns can then be selected by the operator in the cab monitor, in addition to standard factory joystick patterns. When using customized control patterns, a special decal is to be placed in the cab locally to show what the new controls are assigned for.



Joysticks can be customized with advanced implements with programmable joystick lever patterns other than standard patterns like ISO/ JIIS, SCM etc.





Customer Value Agreements

Every piece of Cat equipment is designed and built to provide maximum productivity and operating economy throughout its working life. Your Cat dealer can help you maintain that built-in value through a Customer Value Agreement (CVA).

What is a Customer Value Agreement?

A CVA is any arrangement between you and your Cat dealer that helps you lower your cost per unit of production. Agreements are tailored to fit your business needs and can range from simple Preventive Maintenance Kits to sophisticated Total Cost Performance Guarantees. No matter which option you choose, you can be assured that your Cat dealer will provide you with careful planning and ongoing attention that will help you succeed.

When you have a CVA with your Cat dealer, you have more time to do what you do best – run your business. Trained dealer technicians assist you by maintaining your equipment and driving down operating costs. In the end, everyone’s goal is the same: helping you get more work done at a lower cost.

Perhaps the Most Important Feature of Any CVA is Flexibility.

There are no pre-set requirements or specific products and services that you must agree to buy. In every case and with every piece of equipment, a CVA is an individualized plan. Depending on your needs, your costs can be a flat rate monthly fee or some other arrangement based on actual production hours. Your agreement may include as few or as many pieces of equipment as you wish. You can cover individual systems, single pieces of equipment or entire fleets. Your Cat dealer will work with you to determine the best strategies to maximize productivity and minimize costs for both your Cat equipment and competitive equipment.

Customer Value Agreements are not just for large pieces of equipment, and they are not just for new equipment, either. The need to get more work done at a lower cost is the same, regardless of age or application.

A Partnership That Gets More Done.

In the end, a CVA is a partnership between you and your Cat dealer that will help you succeed by leveraging the equipment management expertise of Caterpillar. When you and your Cat dealer team up with a CVA, you get more than just a piece of Cat iron, you get the company.

MAINTAINENCE INTERVALS

PLEASE REGISTER WITH CAT INSPECT APP

When Required

Air Conditioner/Cab Heater Filter (Recirculation) - Inspect/Replace

Battery Electrolyte Level - Check

Battery or Battery Cable - Inspect/Replace

Bucket Linkage - Inspect/Adjust

Bucket Tips - Inspect/Replace

Cab Air Filter (Fresh Air) - Clean/Replace

Camera - Clean

Condenser (Refrigerant) - Clean

DEF Filler Screen - Clean

Diesel Exhaust Fluid - Drain

Diesel Exhaust Fluid - Fill

Engine Air Filter Primary and/or Secondary Element - Replace

Ether Starting Aid Cylinder - Replace

Film (Product Identification) - Clean

Fuel System - Prime

Fuel Tank Strainer - Clean

Fuses - Replace

Oil Filter - Inspect

Radiator, Aftercooler and Oil Cooler Cores - Clean

Rollover Protective Structure (ROPS) - Inspect

Track Adjustment - Adjust

Window Washer Reservoir - Fill

Window Wiper - Inspect/Replace

Windows - Clean

Every 10 Service Hours or Daily for First 50 Hours

Boom and Stick Linkage - Lubricate

Boom and Stick Linkage - Lubricate

Bucket Linkage - Lubricate

Every 10 Service Hours or Daily

Cooling System Coolant Level - Check

Engine Oil Level - Check

Fuel System Water Separator - Drain

Fuel Tank Water and Sediment - Drain

Hydraulic System Oil Level - Check

Indicators and Gauges - Test

Seat Belt - Inspect

Track Adjustment - Inspect

Travel Alarm - Test

Undercarriage - Check

MAINTAINENCE INTERVALS

PLEASE REGISTER WITH CAT INSPECT APP

Every 50 Service Hours

Boom and Stick Linkage - Lubricate

Boom and Stick Linkage - Lubricate

Every 100 Service Hours

Bucket Linkage - Inspect/Adjust

Bucket Linkage - Lubricate

Every 250 Service Hours

Engine Oil Sample - Obtain

Initial 500 Service Hours

Cooling System Coolant Sample - Obtain

Engine Oil and Filter - Change

Final Drive Oil - Change

Swing Drive Oil - Change

Every 500 Service Hours

Boom and Stick Linkage - Lubricate

Boom and Stick Linkage - Lubricate

Cooling System Coolant Sample - Obtain

Final Drive Oil Level - Check

Final Drive Oil Sample - Obtain

Hydraulic System Oil Sample - Obtain

Pump Coupling Oil Level - Check

Swing Bearing - Lubricate

Swing Drive Oil Level - Check

Swing Drive Oil Sample - Obtain

Every 1000 Service Hours

Battery - Clean

Battery Hold-Down - Tighten

Belt - Inspect/Adjust/Replace

Engine Oil and Filter - Change

Fuel System Primary Filter (Water Separator) Element - Replace

Fuel System Secondary Filter - Replace

Swing Drive Oil - Change

Every 1500 Service Hours

Fumes Disposal Filter Element - Replace

Every 2000 Service Hours

Cooling System Coolant Sample - Obtain

Final Drive Oil - Change

Fuel Tank Cap Filter - Replace

Swing Gear - Lubricate

Every 3000 Service Hours

Hydraulic System Oil Filter (Return) - Replace

Every 3 Years

Seat Belt - Replace

Every 5000 Service Hours

Diesel Exhaust Fluid Filter - Replace

Diesel Exhaust Fluid Injector - Replace

Pump Coupling Oil - Change

Receiver Dryer (Refrigerant) - Replace

Every 6000 Service Hours

Cooling System Coolant Extender (ELC) - Add

Hydraulic System Oil - Change

Every 10 000 Service Hours

DEF Manifold Filters - Replace

Every 12 000 Service Hours

Cooling System Coolant (ELC) - Change

PART NUMBER INDEX

ATTACHMENTS	PAGE No.	PART No.
LINKAGE, REACH W/ROTATE, 3.9M STICK (NO EOU)	10	614-3407
LINKAGE, REACH W/ ROTATE, 3.9M STICK, (WITH EOU)	10	624-4881
LINKAGE, REACH, 3.2M STICK, (WITH EOU)	11	629-9931
LINKAGE, REACH, 3.2M STICK, WITH ROTATE, (WITH EOU)	11	629-9934
LINKAGE, UNDER/UNDER, LOG LOADER	12	629-9936
LINKAGE, OVER/UNDER, LOG LOADER	13	629-9937
LINKAGE, UNDER / UNDER, POWERCLAM, LOG LOADER	14	629-9938
BUCKET LINKAGE WITH EYE	15	521-8031
BUCKET LINKAGE WITHOUT EYE	15	521-8032
BUCKET CYLINDER	15	512-0999
OMISSION LINKAGE	15	614-3415
TRACK, 28" SINGLE GROUSER	16	595-6490
TRACK, 28", DOUBLE GROUSER	17	595-6491
TRACK, 33", TRIPLE GROUSER	18	595-6492
HYDRAULIC PKG, TCS 20, REACH	19	629-9940
HYDRAULIC PKG, TCS 20, LOG LOADER	19	629-9941
HYD PKG, TCS 20, POWER CLAM	19	629-9942
CAB, SIDE ENTRY	20	594-0723
CAB, REAR ENTRY	21	589-0520

TILTING RISER, SIDE ENTRY CAB, 22"	22	594-0713
TILT RISER, REAR ENTRY CAB, 48", BOLTED	23	588-3720
TILT RISER, REAR ENTRY CAB, 48", EASY LOCK	24	615-2395
TILT RISER, REAR ENTRY CAB, 72", EASY LOCK	25	594-0716
INTEGRATED CAN RADIO	26	586-4493
INTEGRATED RADIO, CB + VHF.	27	598-3540
RADIO, AM/FM/USB/BT, REAR ENTRY CAB .	28	598-3531
RADIO, CB/VHF, REAR ENTRY CAB	29	598-3533
RECEIVER, BLUETOOTH, SIDE ENTRY CAB	30	599-0525
RECEIVER, BLUETOOTH, REAR ENTRY CAB	31	599-0527
CAMERA REAR ENTRY CAB	32	595-6445
CAMERA, REAR AND RIGHT SIDE, 22" RISER	33	595-6446
CAMERA REAR AND RIGHT SIDE, 48" RISER, REAR ENTRY CAB	34	597-3249
CAMERA REAR AND RIGHT SIDE, 72" RISER, REAR ENTRY CAB	35	597-3251

PART NUMBER INDEX

LIGHTS 4, SIDE ENTRY CAB FRONT	36	586-4497
LIGHTS 6, SIDE ENTRY CAB FRONT	37	586-4498
LIGHTS 4, REAR ENTRY CAB FRONT	38	598-5659
LIGHTS 6, REAR ENTRY CAB FRONT	39	598-5662
LIGHTS, 1, SIDE ENTRY CAB, REAR, ADDITION	40	586-4503
LIGHTS, 1, REAR ENTRY CAB, REAR	41	598-5665
LIGHTS, WORKING, TILT RISER, LEFT SIDE	42	588-8720
LIGHTS, 2, 22" RISER, SIDE ENTRY CAB	43	598-4711
LIGHTS, 2, 48" RISER, REAR ENTRY CAB	44	598-4712
LIGHTS, 2, 72" RISER, REAR ENTRY CAB	45	610-7438
LIGHTS, 1, ADDITIONAL, 48" / 72" BOLTED RISER, REAR ENTRY CAB	46	602-2258
LIGHTS, 1, ADDITIONAL, 48" / 72" EASY LOCK RISER, REAR ENTRY CAB	47	602-2258
LIGHTS SURROUND, ADDITIONAL	48	595-6785

WIRING AUXILLARY RELAY	49	623-4463
NETWORK MANAGER, STANDARD	50	555-7286
PRODUCT LINK, CELL/SAT, PL083	51	589-1742
WIRING, PRODUCT LINK, SIDE ENTRY CAB	51	586-4507
WIRING, PRODUCT LINK, REAR ENTRY CAB	51	599-9584
COVER, R CAMERA, W/ CTWT LIGHT	52	586-2996
BOX, SAW, 50	53	591-5227
LOCK, PARKING, LL .	54	604-1651
BUG SCREEN	55	615-2307
STARTING AID, ETHER .	56	594-9040
BLOCK HEATER, 120V	57	339-6916
SENSOR, PRESSURE, STANDARD	58	512-6143
PRESSURE SENSOR, QUICK COUPLER	58	512-6144
COUPLER, PIN GRABBER DB W/PINS	59	455-3905
COUPLER, PG W/O PIN DB	59	455-3906
STORAGE PROTECTION	60	0G-4126
STORAGE PROTECTION FROM COGON GRASS	60	0P-7563

PART NUMBER INDEX

WORK TOOLS	PAGE No.	PART No.
GRAPPLE, GLL55 LOG LOADING	61	591-0043
GRAPPLE, GLL60 LOG LOADING	61	591-0044
HEEL FABRICATION, UNDER/UNDER	62	134-0764
HEEL, UNDER/UNDER	63	357-0054
HEEL, OVER/UNDER	64	357-8736
AFTERMARKET KITS	PAGE No.	PART No.
INSPECTION LIGHT KIT	65	623-9752
SIGNAL CONTROLLER KIT, SIDE ENTRY CAB	66	619-8506
SIGNAL CONTROLLER KIT, REAR ENTRY CAB	67	619-8511
FOOT PEDAL SWING KIT	68	634-2975
POWERCLAM / BNT INSTALL	69	597-4072
LIGHT GUARD	70	6357224
SOFTWARE ENABLED ATTACHMENT		
JOYSTICK STEERING	71	615-0355
SWING ALARM	72	617-8510
ADVANCED IMPLEMENT AND TOOL PRIORITY	73	624-3089
CUSTOM JOYSTICK	74	624-3095

NOTES

For more complete information on Cat products, dealer services and industry solutions, visit us on the web at www.cat.com.

© 2022 Caterpillar. All Rights Reserved.

Materials and specifications are subject to change without notice. Featured machines in photos may include additional equipment. See your Cat dealer for available options.

CAT, CATERPILLAR, LET'S DO THE WORK, their respective logos, Product Link, SmartBoom, S-O-S, "Caterpillar Corporate Yellow", the "Power Edge" and Cat "Modern Hex" trade dress as well as corporate and product identity used herein, are trademarks of Caterpillar and may not be used without permission. VisionLink is a trademark of Caterpillar Inc., registered in the United States and in other countries.
www.cat.com www.caterpillar.com

