

# CAT® INSPECT

LEVEL UP  
ON EFFICIENCY.



## CAT® INSPECT RELEASE NOTES

Jan 31, 2023

### Cat Inspect

Cat Inspect is an easy-to-use application that allows users to download and complete Caterpillar and user-defined inspections with the option to include additional information like images, videos, comments, and ratings. Completed inspection details are easily retrieved from the streamlined web portal for follow up and opportunity management.

### SUMMARY

#### What's included in this update?

##### **Cat Inspect Mobile** (Released February 2, 2023)

1. New "Filter by Form Name" search field added when initiating an equipment or site inspection.
2. New option to reload map on asset view if the map fails to load the first time (Customer facing feature only)

##### **Cat Inspect Web** (Released January 31, 2023)

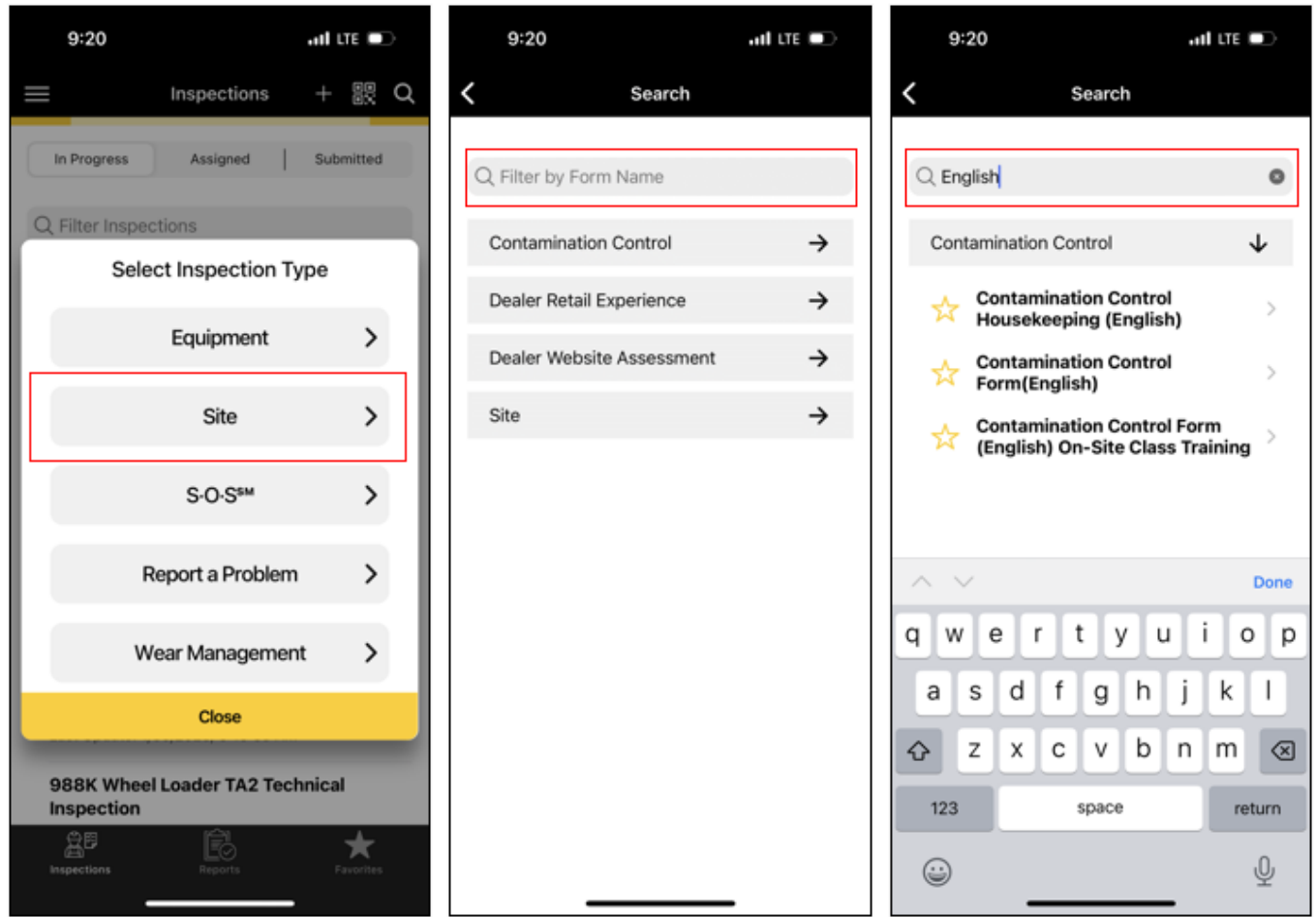
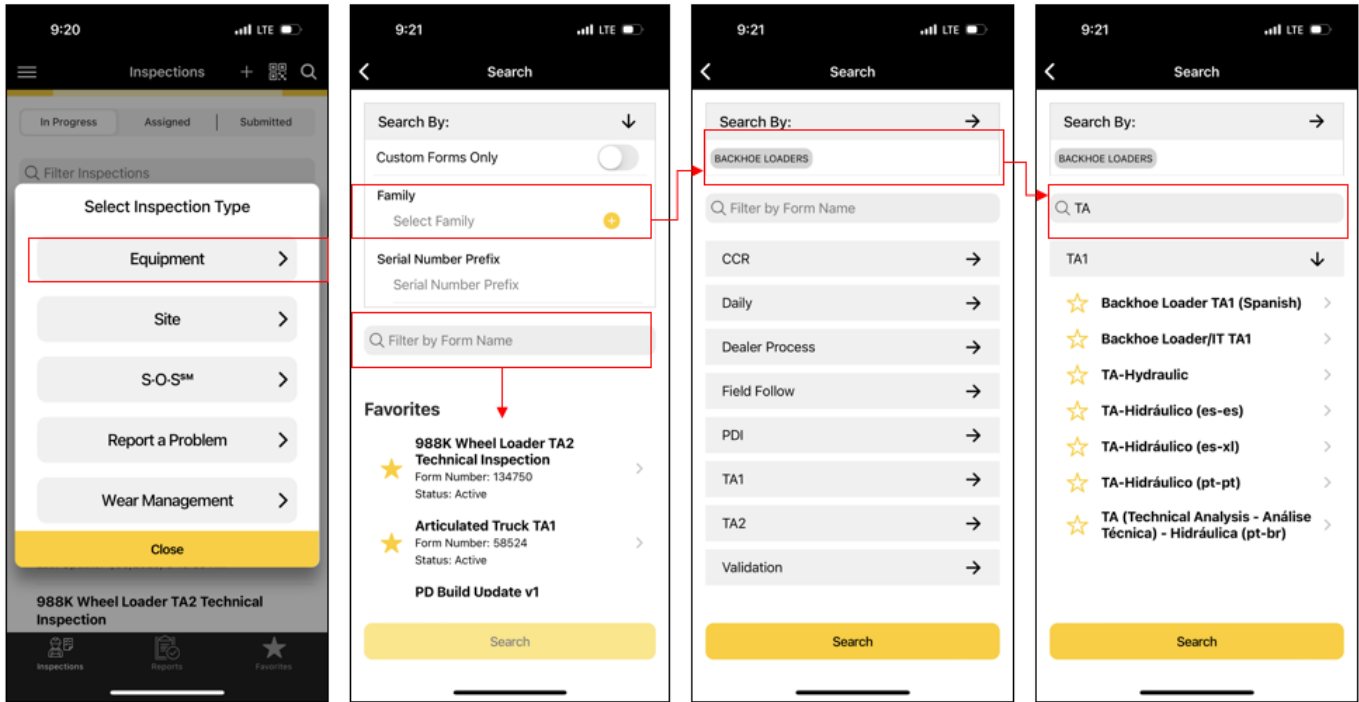
1. Redesigned the inspection Signature Page when performing an inspection on the web.
2. Updated Question Feature text to be more intuitive when a user creates or modifies a question within a form
3. Auto-capitalize the text and limit the number of characters to 3 when a user searches via Serial Number Prefix in "Manage Forms" or "Create Form"

### MOBILE - NEW FEATURES & ENHANCEMENTS

#### Cat Inspect Mobile

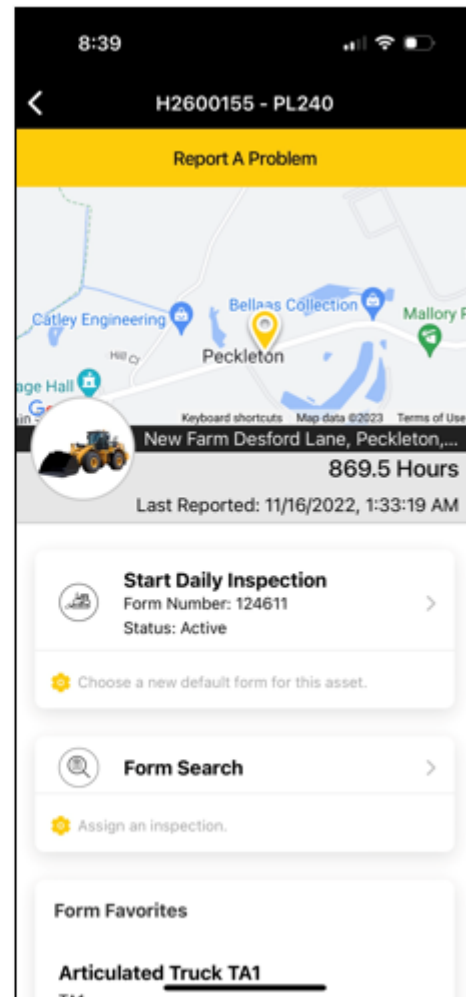
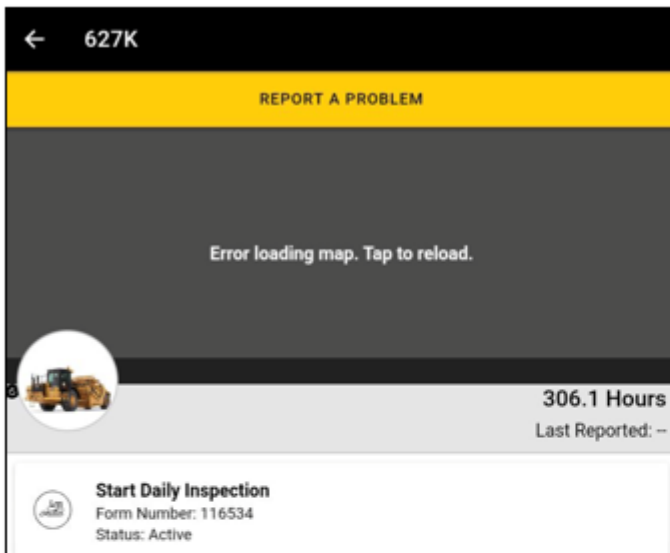
1. **Users now have a way to search for a form, by Form Name when initiating an equipment or site inspection.**

When starting a new "Equipment" inspection, users now have a "Filter by Form Name" box to narrow their search results. On the first screen you can type key words to filter your list of form favorites. Also, after you have selected your form "Family", the same "Filter by Form Name" box can also be used to narrow your form results. This option searches across all form Types under that form Family making it quicker and easier to locate the correct form for your inspection.



## 2. New option to reload map on asset view if the map fails to load the first time.

Users are now able to click the map to reload the page if the map fails to load on the first attempt. There was a bug causing the map to remain frozen if it failed to load on the first attempt.



## WEB - NEW FEATURES & ENHANCEMENTS

### Cat Inspect Web

#### 1. Redesigned the inspection Signature Page when performing an inspection on the Web.

The signature page has a new more intuitive design allowing users to add signatures, select their role, and submit. Multiple signatures can be added to each inspection on both the web and mobile application.

✓ CUSTOMER/ASSET DETAILS     
 ✓ QUESTIONS     
 ○ SUBMIT

**SIGNATURES REQUIRED**  
 Use the format below to create or upload a signature. Minimum of one signature is required.

Drag & drop files  
  
Formats accepted: .jpg, .png, .jpeg

Create New Signature

**Signatures Added**  
 Select the role associated with the uploaded signature.

Signature	Role	
	Inspector <span style="float: right;">▼</span>	
	Other <span style="float: right;">▼</span> Admin	

**Language**  
 Select the Inspection report language

English ▼

**2. Updated Question Feature text to be more intuitive when a user creates or modifies a question within a form.**

Over the past 18 months we added many new form building features to Cat Inspect which increases the complexity of the form building process. For this reason, we've updated the labels within the "QUESTION FEATURES" section to be clearer and more concise.

Cancel
Save

Question \*

Question 1 //

10 / 2000

**Option Set**

1-5 Satisfaction ▼

---

↻ 🗄️

**QUESTION FEATURES**

---

- ▼ Question Requirements

---

- ▼ Sub Questions

---

- ▼ SMCS Codes

---

- ▼ Help Content

---

- ▼ Attributes

---

- ▼ Dynamic Questions

---

3. Auto-capitalize the text and limit the number of characters to 3 when a user searches via Serial Number Prefix in "Manage Forms" or "Create Form".

## FIXES

**Mobile:** Fixed an issued with SOS samples not saving Fluid Weight

## COMING SOON

Here is a preview of some new features to expect in our upcoming release schedule:

- A new Cat Inspect API (Application Program Interface) will be made available on the Digital Marketplace
- Organizational managed questions responses (options sets).
- Auto-fill Inspection customer and asset information.
- Inspection sync engine redesign (Improves how submitted inspection sync with the backend).