

CAT® DETECT WITH SMART CAMERA

SMART CAMERAS MAKE SAFER SITES

SAFER IS BETTER

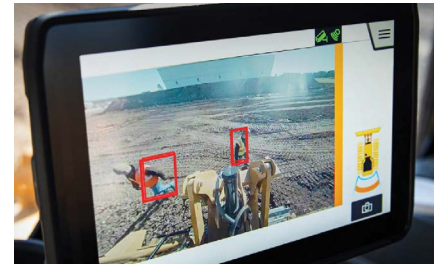
The Cat® Smart Camera is a safety system that helps keep track of people around the machine and helps keep your site safer.


This system has safety features that were designed to increase operator awareness and protect people on the ground. Let's check them out:

1. The rear-facing smart camera actively looks for people, providing another set of eyes behind the machine.
2. A high-definition, touchscreen display gives the operator additional views around the machine and engages with the operator when a person is detected behind the machine.
3. Intelligent alerts notify the operator when people are behind the machine and within the detection zone.

HOW IT WORKS

The smart camera actively looks for people around the machine. As people get close to the machine, the in-cab display provides audible and visual alerts to the operator. These intelligent alerts adjust in intensity and frequency based on the detection zone: yellow, orange or red.





CAN THE SMART CAMERA SYSTEM BE INSTALLED ON MY FLEET?

Adding it to your Cat equipment — and other brands — is easy. You can install it with a 12V or 24V DC system that meets the installation height and angle requirements.

THE BENEFITS OF SAFETY

The Smart Camera system was created with your bottom line in mind. Because this system was designed to work without technology wearables, it conveniently enforces safety without any additional steps or requirements from your crew. Not only that, but this system's 180-degree view behind the machine helps increase operator visibility, and in turn, their confidence and productivity. Take the next step towards safety and help keep your work family safe.

Talk to your dealer today to learn more about installing the Cat® Detect with Smart Camera system on your fleet.

CAT.COM/SMARTCAMERA