

CAT® DETECT WITH REAR CAMERA

A VISIBLE DIFFERENCE

HERE TO BACK YOUR OPERATION

Cat® Rear Camera is a safety upgrade that gives machine operators more visibility behind the machine.

This system has features designed to help reduce accidents from restricted visibility. Let's check them out:

1. Vibration-resistant camera
2. In-cab, high-definition display
3. Real-time video transmission

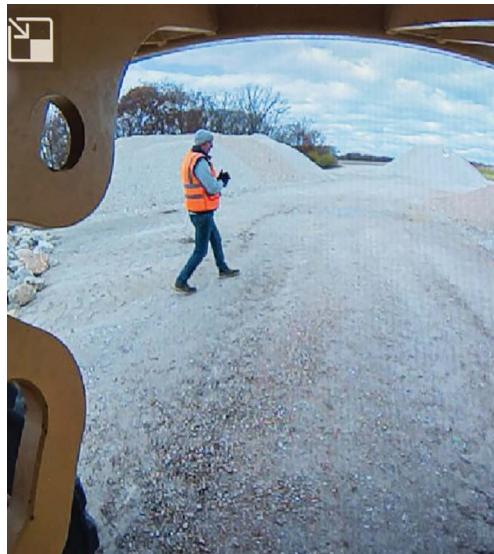


CAN REAR CAMERAS BE INSTALLED ON MY FLEET?

Adding it to your Cat equipment — and other brands — is easy. You can install it on any machine with a 12V or 24V DC system.

HOW IT WORKS

The camera placed at the back of the machine gives the operator additional rear visibility. The camera is connected to the in-cab display through durable harnessing. This connection allows real-time transmission on the in-cab display. Operators can see what's happening, while it's happening.



THE BENEFITS OF SAFETY

The Rear Camera system was designed with site safety in mind, and the benefits to this are clear. With fewer operator blind spots, accidents are reduced, operator visibility is increased and boosted confidence leads to more productive work. An extra camera on your machine equals an extra set of eyes — reducing the need for spotters. The Rear Camera system not only makes your operation safer, but also more cost-efficient. Turns out safety really does pay off.

Talk to your dealer today to learn more about installing Cat® Detect with Rear Camera on your fleet.

CAT.COM/REARCAMERA