



# 834

## Wheel Dozer

# Technical Specifications

Configurations and features may vary by region. Please consult your Cat® dealer for availability in your area.

### Table of Contents

<b>Specifications</b>	<b>2</b>
Engine	2
Operating Specifications	2
Transmission	2
Hydraulic System – Lift/Tilt	2
Hydraulic System – Steering	2
Service Refill Capacities	3
Air Conditioning System	3
Axles	3
Brakes	3
Sound Performance	3
Dimensions	4
Blade Specifications	5
<b>Standard and Optional Equipment</b>	<b>6</b>
<b>834 Environmental Declaration</b>	<b>8</b>



# 834 Wheel Dozer Specifications

## Engine

Engine Model	Cat® C18	
Rated Speed	1,900 rpm	
Peak Power Speed	1,500 rpm	
Gross Power – SAE J1995:2014	419 kW	562 hp
Net Power – SAE J1349:2011	370 kW	496 hp
Bore	145 mm	5.7 in
Stroke	183 mm	7.2 in
Displacement	18.1 L	1,105 in <sup>3</sup>
Peak Torque (1,300 rpm)	2836 N·m	2,092 lbf-ft
Torque Rise	52%	

- Net power advertised is the power available at the engine flywheel when the engine is equipped with a fan, air cleaner, clean emissions module and alternator.
- The following engine configurations are available:
  - Meets U.S. EPA Tier 4 Final and EU Stage V emission standards.
  - Noncertified configuration that is equivalent to U.S. EPA Tier 3.

## Operating Specifications

Operating Weight	47 750 kg	105,271 lb
Blade Capacities	7.9-22.2 m <sup>3</sup>	10.3-29.0 yd <sup>3</sup>

## Transmission

Transmission Type	Cat planetary power shift	
Forward 1	6.8 km/h	4.2 mph
Forward 2	11.6 km/h	7.2 mph
Forward 3	20.3 km/h	12.6 mph
Forward 4	35.4 km/h	22.0 mph
Reverse 1	6.8 km/h	4.2 mph
Reverse 2	12.2 km/h	7.6 mph
Reverse 3	21.4 km/h	13.3 mph
Direct Drive Forward 1	Lock-up disabled	
Direct Drive Forward 2	12.4 km/h	7.7 mph
Direct Drive Forward 3	22.1 km/h	13.7 mph
Direct Drive Forward 4	38.5 km/h	23.9 mph
Direct Drive Reverse 1	7.2 km/h	4.5 mph
Direct Drive Reverse 2	13.0 km/h	8.1 mph
Direct Drive Reverse 3	23.0 km/h	14.3 mph

- Travel speeds based on 35/65-R33 tire.

## Hydraulic System – Lift/Tilt

Lift/Tilt System – Circuit	Pilot operated LS valve with EH	
Lift/Tilt System	Variable displacement piston	
Maximum Flow at 1,900 rpm	582 L/min	153 gal/min
Relief Valve Setting – Lift/Tilt	32 000 kPa	4,641 psi
Cylinders, Double Acting: Lift, Bore and Stroke	139.75 mm × 1021 mm	5.5 in × 40.2 in
Cylinders, Double Acting: Left and Right Tilt, Bore and Stroke	140 mm × 230 mm	5.5 in × 9.1 in
Pilot System	Variable displacement piston	
Pilot Maximum Flow	52 L/min	13.7 gal/min
Pilot Relief Valve Setting	4000 kPa	580 psi

## Hydraulic System – Steering

Steering System – Circuit	Pilot, load sensing	
Steering System – Pump	Piston, variable displacement	
Maximum Flow	250 L/min	65.8 gal/min
Relief Valve Setting – Steering	24 100 kPa	3,495 psi
Total Steering Angle	86°	
Steering Cycle Time (high idle)	3.1 seconds	
Steering Cycle Time (low idle)	5.7 seconds	

## Service Refill Capacities

Fuel Tank	793 L	209.5 gal
Cooling System	120 L	31.7 gal
Crankcase	60 L	15.9 gal
Diesel Exhaust Fluid Tank*	33 L	8.7 gal
Transmission	120 L	31.7 gal
Differentials and Final Drives – Front	186 L	49.1 gal
Differentials and Final Drives – Rear	186 L	49.1 gal
Hydraulic System Factory Fill	240 L	63.4 gal
Hydraulic System (tank only)	140 L	37.0 gal

- All non-road Tier 4 Final/Stage V diesel engines are required to use:
  - ULSD (ultra-low sulfur diesel fuel with 15 ppm of sulfur or less) or ULSD blended with the following lower-carbon intensity fuels\*\* up to:
    - 20% biodiesel FAME (fatty acid methyl ester)\*
    - 100% renewable diesel, HVO (hydrotreated vegetable oil) and GTL (gas-to-liquid) fuels

Refer to guidelines for successful application. Please consult your Cat dealer or “Caterpillar Machine Fluids Recommendations” (SEBU6250) for details.

\* Engines with no aftertreatment devices can use higher blends, up to 100% biodiesel (for use of blends higher than 20% biodiesel, consult your Cat dealer).

\*\* Tailpipe greenhouse gas emissions from lower-carbon intensity fuels are essentially the same as traditional fuels.
- For pre-Tier 4 engines: Cat engines are compatible with diesel fuel blended with the following lower-carbon intensity fuels\*\* up to:
  - 100% biodiesel FAME (fatty acid methyl ester)\*
  - 100% renewable diesel, HVO (hydrotreated vegetable oil) and GTL (gas-to-liquid) fuels

Refer to guidelines for successful application. Please consult your Cat dealer or “Caterpillar Machine Fluids Recommendations” (SEBU6250) for details.

\* For use of blends higher than 20% biodiesel, consult your Cat dealer.

\*\* Tailpipe greenhouse gas emissions from lower-carbon intensity fuels are essentially the same as traditional fuels.

## Air Conditioning System

- The air conditioning system on this machine contains the fluorinated greenhouse gas refrigerant R134a or R1234yf. See the label or instruction manual for identification of the gas.
- If equipped with R134a (Global Warming Potential = 1430), the system contains 1.8 kg (3.9 lb) of refrigerant which has a CO<sub>2</sub> equivalent of 2.574 metric tonnes (2.837 tons).

## Axles

Front	Fixed
Rear	Trunnion
Oscillation Angle	±13°

## Brakes

Brakes	ISO 3450:2011
--------	---------------

## Sound Performance

### Tier 4 Final/Stage V

Operator Sound Pressure Level (ISO 6396:2008)	72 dB(A)
Machine Sound Power Level (ISO 6395:2008)	113 dB(A)
Operator Sound Pressure Level (ISO 6396:2008)	72 dB(A)*
Machine Sound Power Level (ISO 6395:2008)	109 dB(A)**

### Tier 3/Stage IIIA

Operator Sound Pressure Level (ISO 6396:2008)	72 dB(A)
Machine Sound Power Level (ISO 6395:2008)	113 dB(A)
Operator Sound Pressure Level (ISO 6396:2008)	72 dB(A)*
Machine Sound Power Level (ISO 6395:2008)	110 dB(A)**

\* For machines in European Union countries and in countries that adopt the “EU Directives” and “UK Directives”

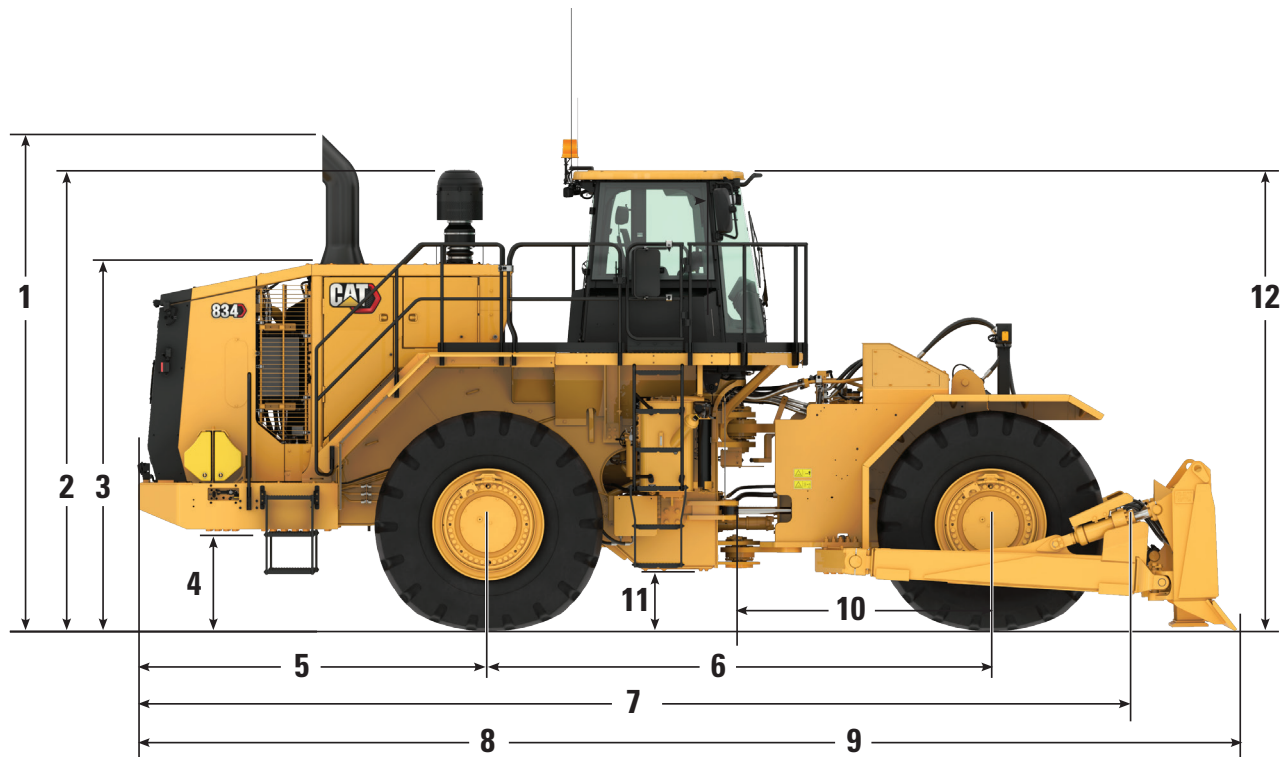
\*\* European Union Directive “2000/14/EC” as amended by “2005/88/EC” and UK Noise Regulation 2001 No. 1701

- The machine sound power level was measured according to ISO 6395:2008. The measurement was conducted at 70% of the maximum engine cooling fan speed.
- The operator sound pressure level was measured according to ISO 6396:2008. The measurement was conducted at 70% of the maximum engine cooling fan speed.
- Hearing protection may be needed when the machine is operated with a cab that is not properly maintained or when the doors or windows are open for extended periods or in a noisy environment.

# 834 Wheel Dozer Specifications

## Dimensions

All dimensions are approximate.



1	Height to Top of Exhaust Stack	4835 mm	15.9 ft
2	Height to Top of Air Cleaner	3895 mm	12.8 ft
3	Height to Top of Hood	3334 mm	10.9 ft
4	Ground Clearance to Bumper	933 mm	3.1 ft
5	Centerline of Rear Axle to Edge of Bumper	3187 mm	10.5 ft
6	Wheelbase	4550 mm	14.9 ft
7	Length to Front Tire	8715 mm	28.4 ft
8	Length of Straight Blade on Ground	9927 mm	32.6 ft
9	Length of Universal Blade on Ground	10 470 mm	34.4 ft
10	Centerline of Front Axle to Hitch	2275 mm	7.5 ft
11	Ground Clearance	531 mm	1.7 ft
12	Height to Top of Cab	4184 mm	13.7 ft

# 834 Wheel Dozer Specifications

## Blade Specifications

Blade Type	Capacity	Overall Width	Height	Digging Depth	Ground Clearance	Maximum Tilt	Weight	Total Operating Weight
Straight	7.9 m <sup>3</sup>	5074 mm	1537 mm	557 mm	1324 mm	1270 mm	3296 kg	47 206 kg
	10.3 yd <sup>3</sup>	199.8 in	60.5 in	21.0 in	52.1 in	50.0 in	7,267 lb	104,069 lb
Universal	11.1 m <sup>3</sup>	5151 mm	1537 mm	527 mm	1338 mm	1270 mm	4654 kg	48 564 kg
	14.5 yd <sup>3</sup>	202.8 in	60.5 in	20.7 in	52.7 in	50.0 in	10,262 lb	107,064 lb
Coal	22.2 m <sup>3</sup>	5677 mm	2032 mm	465 mm	1178 mm	1482 mm	4390 kg	48 295 kg
	29.0 yd <sup>3</sup>	223.5 in	80.0 in	18.3 in	46.4 in	58.3 in	9,670 lb	106,472 lb
Semi-Universal	13.44 m <sup>3</sup>	4709 mm	1898 mm	545 mm	1112 mm	887 mm	3632 kg	47 537 kg
	17.58 yd <sup>3</sup>	185.4 in	74.7 in	21.4 in	43.8 in	34.9 in	8,007 lb	104,809 lb

# 834 Wheel Dozer Standard and Optional Equipment

## Standard and Optional Equipment

Standard and optional equipment may vary. Consult your Cat® dealer for details.

	Standard	Optional		Standard	Optional
<b>ELECTRICAL</b>			<b>OPERATOR ENVIRONMENT (CONTINUED)</b>		
Alarm, back-up	✓		Radio, AM/FM/CD/MP3 Bluetooth with Satellite SiriusXM		✓
Alternator, single 100 amp	✓		Rimpull Control System (RCS)	✓	
Auxiliary jump start receptacle	✓		Seat, deluxe	✓	
Batteries, dry	✓		Seat, Premium Plus containing forced air heating and cooling, 2-way thigh adjustment, power lumbar and back bolster adjustment, ride stiffness, dynamic end dampening and leather finish		✓
Converter, 10/15 amp, 24V to 12V	✓		Seat belt minder	✓	
Hazardous voltage lamp	✓		Seat belt, retractable, 76 mm (3 in) wide	✓	
Lighting system (LED work lights, access and service platform lighting)	✓		Steering and Transmission Integrated Control (STIC™) System	✓	
Lighting system (High Performance LED work lights, access and service platform lighting)		✓	UV glass	✓	
Lighting system Underhood service lighting		✓	Vital Information Management System (VIMS™) with graphical information display: external data port, customizable operator profiles, cycle timer, integrated payload control system	✓	
Starting and charging system, 24V	✓		Wet-arm wipers/washers (front and rear) – intermittent front and rear wipers	✓	
Starter lockout in bumper	✓		Window pull-down visor		✓
Transmission lockout in bumper	✓		Operator Presence	✓	
<b>OPERATOR ENVIRONMENT</b>			Slope Indication	✓	
Air conditioner	✓		<b>POWERTRAIN</b>		
Cab precleaner		✓	Antifreeze, -50° C (-58° F)		✓
Cab, sound suppressed and pressurized, integrated rollover protective structure (ROPS/FOPS) radio ready for entertainment, includes antenna, speakers and converter (12-volt 5-amp) and power port	✓		Antifreeze, premixed 50% concentration of extended life coolant with freeze protection to -34° C (-29° F)	✓	
Cat® Detect (object detection system)		✓	Automatic retarding controls	✓	
Cat Vision, rear-vision camera system	✓		Axle oil cooler		✓
Graphical information display, displays real time operating information, performs calibrations and customizes operator settings	✓		Brakes, oil-cooled, multi-disc, service/secondary	✓	
Tilt, tip controls	✓		Case drain screens	✓	
Heater and defroster	✓		Crankcase guards		✓
Horn, electric	✓		Demand fan	✓	
Instrumentation, gauges: coolant temperature, engine hour meter, hydraulic oil temperature, powertrain oil temperature	✓		Electro hydraulic parking brake	✓	
LED warning strobe		✓	Engine, Cat C18 MEUI™, diesel, turbocharged/aftercooled	✓	
Light, cab, dome	✓		Engine brake		✓
Lights, directional	✓		Engine oil change system, high speed, Wiggins		✓
Lunchbox and beverage holders	✓		Ground-level engine shutdown switch	✓	
Mirrors, rearview (externally mounted)	✓		High ambient cooling – software		✓
Mirrors, heated		✓	Turbine precleaner, engine air intake	✓	
Radio, AM/FM/CD/MP3 Bluetooth®	✓		Turbine precleaner, engine air intake dual stage		✓
Radio, CB ready	✓		Radiator, Aluminum Modular Radiator (AMR)	✓	
			Starting aid, ether, automatic	✓	
			Throttle lock, electronic	✓	

# 834 Wheel Dozer Standard and Optional Equipment

## Standard and Optional Equipment

Standard and optional equipment may vary. Consult your Cat dealer for details.

	Standard	Optional		Standard	Optional
<b>POWERTRAIN (CONTINUED)</b>			<b>ADDITIONAL EQUIPMENT (CONTINUED)</b>		
Torque converter, impeller clutch (ICTC) with lock-up clutch (LUC) and rimpull control system (switch and dial in cab)	✓		Hitch, drawbar with pin	✓	
Transmission, planetary power shift, 4F/3R electronic control	✓		Hoses, Cat XT™	✓	
Manual switch and automatic fuel priming	✓		Hydraulic, steering and brake filtration/ screening system	✓	
<b>ADDITIONAL EQUIPMENT</b>			Hydraulically driven demand fan	✓	
Cold weather package: additional starter and 2 batteries, engine block heater 120V or 240V, heated fuel lines		✓	Oil sampling valves	✓	
Base machine price includes a rim allowance	✓		Rear access to cab and service platform	✓	
Cat Clean Emission Module (CEM)	✓		Steering, load sensing	✓	
Couplings, Cat O-ring face seals	✓		Tire Pressure Monitoring System		✓
Doors, service access (locking)	✓		Toe kicks	✓	
Ecology drains for engine, radiator, hydraulic tank	✓		Transmission brake	✓	
EZ Clean cooling system		✓	Vandalism protection caplocks	✓	
Fuel tank, 793L (210 gal)	✓		Wheel chocks		✓
Fast fill fuel system (Shaw-Aero)		✓			
Front and rear roading fenders		✓			

# 834 Environmental Declaration

The following information applies to the machine at the time of final manufacture as configured for sale in the regions covered in this document. The content of this declaration is valid as of the date issued; however, content related to machine features and specifications are subject to change without notice. For additional information, please see the machine's Operation and Maintenance Manual.

For more information on sustainability in action and our progress, please visit <https://www.caterpillar.com/en/company/sustainability>.

## Engine

- The Cat® C18 engine is available in configurations that meet U.S. EPA Tier 4 Final and EU Stage V emission standards or noncertified that emits equivalent to U.S. EPA Tier 3.
- Cat U.S. EPA Tier 4 Final and EU Stage V diesel engines are required to use ULSD (ultra-low sulfur diesel fuel with 15 ppm of sulfur or less) or ULSD blended with the following lower-carbon intensity fuels up to:
  - ✓ 20% biodiesel FAME (fatty acid methyl ester)\*
  - ✓ 100% renewable diesel, HVO (hydrotreated vegetable oil) and GTL (gas-to-liquid) fuels
- Cat engines equivalent to U.S. EPA Tier 3 are compatible with diesel fuel blended with the following lower-carbon intensity fuels up to:
  - ✓ 100% biodiesel FAME (fatty acid methyl ester)\*\*
  - ✓ 100% renewable diesel, HVO (hydrotreated vegetable oil) and GTL (gas-to-liquid) fuels

Refer to guidelines for successful application. Please consult your Cat dealer or "Caterpillar Machine Fluids Recommendations" (SEBU6250) for details.

*\*Engines with no aftertreatment devices can use higher blends, up to 100% biodiesel.*

*\*\*For use of blends higher than 20% biodiesel, consult your Cat dealer.*

## Air Conditioning System

- The air conditioning system on this machine contains the fluorinated greenhouse gas refrigerant R134a or R1234yf. See the label or instruction manual for identification of the gas.
- If equipped with R134a (Global Warming Potential = 1430), the system contains 1.8 kg (3.9 lb) of refrigerant which has a CO<sub>2</sub> equivalent of 2.574 metric tonnes (2.837 tons).

## Paint

- Based on best available knowledge, the maximum allowable concentration, measured in parts per million (PPM), of the following heavy metals in paint are:
  - Barium < 0.01%
  - Cadmium < 0.01%
  - Chromium < 0.01%
  - Lead < 0.01%

## Sound Performance

### Tier 4 Final/Stage V

Operator Sound Pressure Level (ISO 6396:2008)	72 dB(A)
Machine Sound Power Level (ISO 6395:2008)	113 dB(A)
Operator Sound Pressure Level (ISO 6396:2008)	72 dB(A)*
Machine Sound Power Level (ISO 6395:2008)	109 dB(A)**

### Tier 3/Stage IIIA

Operator Sound Pressure Level (ISO 6396:2008)	72 dB(A)
Machine Sound Power Level (ISO 6395:2008)	113 dB(A)
Operator Sound Pressure Level (ISO 6396:2008)	72 dB(A)*
Machine Sound Power Level (ISO 6395:2008)	110 dB(A)**

\* For machines in European Union countries and in countries that adopt the "EU Directives" and "UK Directives"

\*\* European Union Directive "2000/14/EC" as amended by "2005/88/EC" and UK Noise Regulation 2001 No. 1701

- The machine sound power level was measured according to ISO 6395:2008. The measurement was conducted at 70% of the maximum engine cooling fan speed.
- The operator sound pressure level was measured according to ISO 6396:2008. The measurement was conducted at 70% of the maximum engine cooling fan speed.
- Hearing protection may be needed when the machine is operated with a cab that is not properly maintained or when the doors or windows are open for extended periods or in a noisy environment.

## Oils and Fluids

- Caterpillar factory fills with ethylene glycol coolants. Cat Diesel Engine Antifreeze/Coolant (DEAC) and Cat Extended Life Coolant (ELC) can be recycled. Consult your Cat dealer for more information.
- Cat Bio HYDO™ Advanced is an EU Ecolabel approved biodegradable hydraulic oil.
- Additional fluids are likely to be present, please consult the Operations and Maintenance Manual or the Application and Installation guide for complete fluid recommendations and maintenance intervals.

## Features and Technology

- The following features and technology may contribute to fuel savings and/or carbon reduction. Features may vary. Consult your Cat dealer for details.
  - Engine Idle Management System and Auto Engine Idle Shutdown reduces idle RPM and maximizes fuel efficiency
  - Autoshift mode to automatically upshift or downshift based on machine speed, optimizing performance and conserving fuel
  - Load sensing hydraulic steering system enables precise machine control for easier loading
  - Extended maintenance intervals reduce fluid and filter consumption
  - Cat torque converter with lock-up clutch improves travel speeds, optimizes fuel efficiency, and eliminates torque converter losses, while lowering system heat





オフロード法2014年  
基準適合



For more complete information on Cat products, dealer services, and industry solutions, visit us on the web at [www.cat.com](http://www.cat.com).

Materials and specifications are subject to change without notice. Featured machines in photos may include additional equipment. See your Cat dealer for available options.

© 2025 Caterpillar. All Rights Reserved. CAT, CATERPILLAR, LET'S DO THE WORK, their respective logos, VIMS, XT, HYDO, ADEM, DEO-ULS, STIC, MEUI, "Caterpillar Corporate Yellow", the "Power Edge" and Cat "Modern Hex" trade dress as well as corporate and product identity used herein, are trademarks of Caterpillar and may not be used without permission.

AEXQ3622-02 (4-2025)  
Replaces: AEXQ3622-01  
Build Number: 11B  
(Global)

