

REParts™

Genuine Parts



REParts™

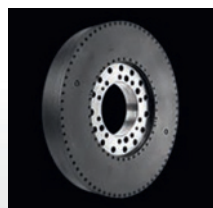
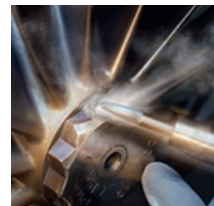
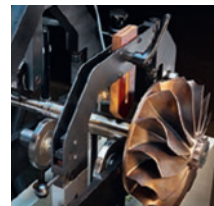
Maximum Uptime at Minimum Cost.

Prompt and worldwide availability of quality parts is critical for your business success – often making all the difference in maintaining uptime and staying profitable. Many of our genuine parts may often be rebuilt for a second life, adding value to your investment and reducing overall owning and operating costs.

Through our new **Repair and Exchange Parts (REParts™)** program for medium-speed engines (MSE) of the Cat® and MaK™ brands, we can offer our customers extensive repair and exchange options that provide same-as-new performance and reliability at a fraction of new price. The results are maximum engine productivity and lower life cycle costs – while reducing the impact on the environment.

A New Option for a Wide Range of Parts.

When your engine requires service, you need options that get your vessel back into operation quickly. Our extensive REParts™ program provides you with sustainable, cost-effective and high quality service solutions through the optimal reuse of parts during an engine overhaul.

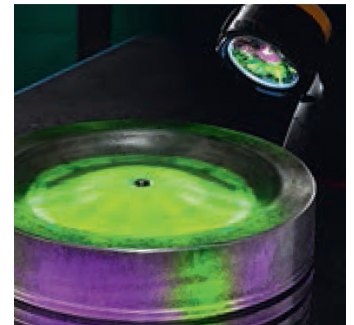


Same-As-New Performance.

We provide our customers with the most cost effective solutions available in the industry. REParts™ are produced to the same quality standards as our original OEM parts.

By utilizing our state-of-the-art salvage and cleaning techniques, quality control, and stringent testing, Caterpillar parts are returned to their original specifications. Only this attention to detail ensures REParts™ provide same-as-new quality and reliability.

When you install REParts™, you can be assured that the reliability and performance of your engine will be maintained. Equally important, all REParts™ are backed by our parts warranty.



**Ready to Use, Easy to Exchange –
Wherever You Are.**

REParts™ are ready to use, easy to exchange and install, so you can minimize downtime and increase your vessel availability. Our broad line of REParts™ is supported by our worldwide approved dealer and distribution network, and can be ordered through your local Cat or MaK representative.



Return, Repair, Or Replace.

REParts™ provide you with an option to lower owning and operating costs by reusing many of the original components. With the return of your used genuine components, you can save 20–40% of the repair or replacement costs. We visually inspect the used components, providing an immediate decision on core condition and cost, so you can better estimate repair costs.

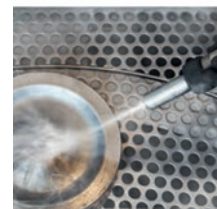
The return criteria* and process is simple. The component should be in fair and usable condition, no visible cracks, damage or welded repairs. It should be fully assembled and complete, with no excessive rust or corrosion on interior or machined surfaces. And, you decide whether to repair or exchange your genuine components.



A Sustainable Solution.

REParts™ make a positive contribution to sustainability by keeping non-renewable resources in circulation for multiple lifetimes. By returning used components to same-as-new condition, we reduce waste and minimize the need for raw material to produce new parts.

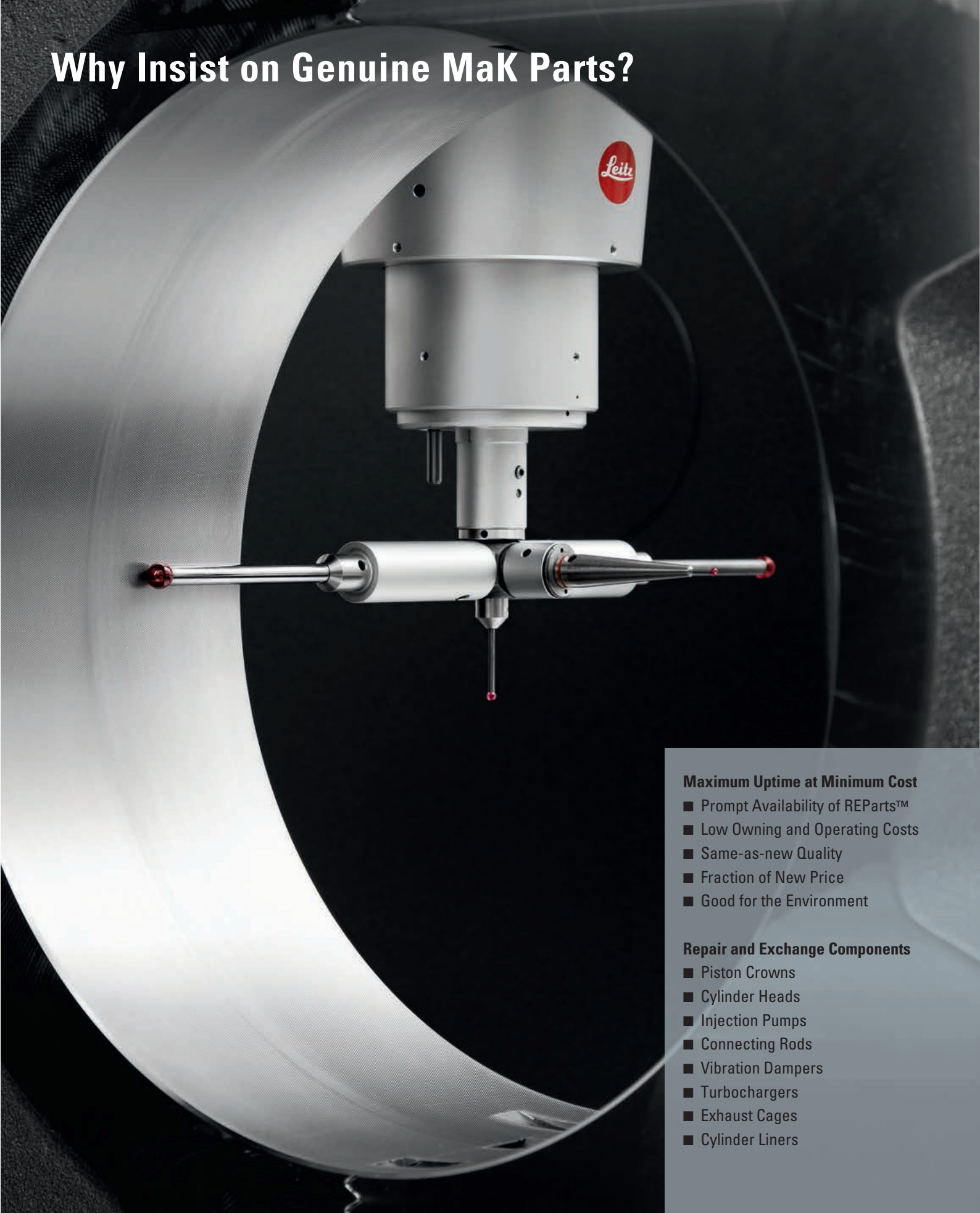
As you would expect, REParts™ conform to all EIAPP and IMO requirements (as applicable) and meet all current and future emission-relevant regulations.



Repaired to OEM specifications.

* Core refund criteria vary by component and are subject to change. Partial core refunds are available for some components. Contact your Cat or MaK dealer for a detailed offer.

Why Insist on Genuine MaK Parts?



Maximum Uptime at Minimum Cost

- Prompt Availability of REParts™
- Low Owning and Operating Costs
- Same-as-new Quality
- Fraction of New Price
- Good for the Environment

Repair and Exchange Components

- Piston Crowns
- Cylinder Heads
- Injection Pumps
- Connecting Rods
- Vibration Dampers
- Turbochargers
- Exhaust Cages
- Cylinder Liners

Faster. Less Expensive. Damage-Free parts.

All of our genuine MaK parts are easily available via the dealer network

Services for the lifetime of your engine – when you choose Caterpillar, you get that and much more. Our global network of local and certified dealers is available to support you with solutions and genuine expertise. The network offers you consistent availability of genuine parts and services worldwide while contributing to meeting your environmental and operational goals.

To find your local dealer, please visit our Dealer Locator:

https://www.cat.com/en_US/by-industry/marine/mak-dealer-locator.html



Global dealer network

Caterpillar Motoren GmbH & Co.KG
Falckensteiner Str. 2
24159 Kiel/Germany

Phone: +49 431 3995 01
Telefax: +49 431 3995 2193

For more information please visit our website:
cat.com/marine

Subject to change without notice.
Leaflet No. 421 - 07.22 - e - L+S - AD
LEDM0115-03

© 2022 Caterpillar. All Rights Reserved. CAT, CATERPILLAR, LET'S DO THE WORK, their respective logos, "Caterpillar Corporate Yellow", the "Power Edge" and Cat "Modern Hex" trade dress as well as corporate and product identity used herein, are trademarks of Caterpillar and may not be used without permission.

Contact your local dealer:
https://www.cat.com/en_US/by-industry/marine/mak-dealer-locator.html

Visit us on Shipperserv at:
<https://www.shipserv.com/brand/mak>

Check out our MaK LinkedIn page to stay up to date:
<https://www.linkedin.com/showcase/caterpillar-mak/>

