



336D, 336D L, 336D2 AND 336D2 L LARGE HYDRAULIC EXCAVATOR PARTS REFERENCE GUIDE

SERIAL NUMBER PREFIX: JBT, KKT, M4T, PRF, W3K,
FAJ, WDC, HBK, YCF, ZCT

LET'S DO THE WORK.™




PROTECT YOUR INVESTMENT WITH GENUINE CAT® PARTS

Thank you for selecting the Cat® Large Hydraulic Excavators.

This guide is designed to provide you with a quick reference for the parts and part numbers you need to keep your Cat® large hydraulic excavator running at peak efficiency. Always read and understand the machine's Operation and Maintenance Manual prior to performing any type of maintenance.

MAINTENANCE

Proactive preventative maintenance extends the life of your machine and protects your investment. Only Caterpillar knows Cat equipment's filtration and lubrication requirements and offers parts kits to match your machine's maintenance cycles.

SCHEDULED MAINTENANCE PARTS	
	GREASES
	PLANNED MAINTENANCE

REPLACEMENT PARTS

Proper maintenance minimizes the need for repair and replacement. In the event that replacement parts are required for this product, Caterpillar recommends using original Caterpillar® replacement parts. Other parts may not meet certain original equipment specifications.

WEAR PARTS
GROUND ENGAGING TOOLS
REPAIR PARTS
CAB ACCESSORIES
MIRRORS, CAMERAS, MONITORS
LIGHTS
OCCASIONAL REPAIR PARTS
ACCESS DOORS
UNDERCARRIAGE
ENGINE COMPONENTS
PUMPS AND MOTORS

GREASES

	STANDARD MAINTENANCE GREASES			GREASES FOR UNIQUE APPLICATIONS AND ENVIRONMENTS		
Previous Cat Product Name	Cat Ultra5 Moly #1	Cat Ultra5 Moly #2	Cat Advanced 3 Moly	Cat Arctic Platinum	Cat Desert Gold	Cat Multipurpose
Current Cat Product Name	Cat Extreme Application Grease 1	Cat Extreme Application Grease 2	Cat Prime Application Grease	Cat Extreme Application Grease - Arctic	Cat Extreme Application Grease - Desert	Cat Utility Grease
Grade (NLGI)	1	2	2	0	2	2
Melting Point F° (C°)	500 (260)	500 (260)	500 (260)	446 (230)	536 (280)	500 (260)
Ambient Temperature F° (C°)	-31 to +104 (35 to +40)	-22 to +122 (-30 to +50)	-4 to +104 (-20 to +40)	-31 to +104 (35 to +40)	-22 to +122 (-30 to +50)	-4 to +2012 (-20 to +1100)
Base Oil Type	Mineral	Mineral	Mineral	Semi-Synthetic	Mineral	Mineral
Color	Dark Gray	Dark Gray	Dark Gray	Dark Grey	Dark Grey	Blue
Cartridge (14 oz / 390 g)	452-5996	452-6001	452-6006	508-2184	452-6016	452-6011
Plastic Pail (11 lb / 5 kg)	-	-	-	-	-	-
Plastic Pail (35 lb / 16 kg)	452-5999	452-6004	452-6009	508-2187	452-6019	452-6014
Keg (120 lb / 55 kg)	452-5998	452-6003	452-6008	508-2186	452-6018	452-6013
Drum (400 lb / 180 kg)	452-5997	452-6002	452-6007	508-2185	452-6017	452-6012



PLANNED MAINTENANCE

LARGE EXCAVATOR		Every 500 hours				
		Engine Crankcase		Fuel Filter		
Sales Model	Serial Number Prefix	Filter Element	Oil Quantity -Gallon (Liter) DEO-ULS TM	Fuel/Water Separator Element	Secondary Element	Third Element
336D	JBT	1R-1808 or 563-8152*	10.6 (40)	326-1644	1R-0762	-
	KKT					
336D L	M4T					
	PRF					
	W3K					
336D2	FAJ					
	WDC					
336D2 L	HBK					
	YCF					
	ZCT					

* Depends on fuel injector serial number. Consult your dealer for more information.

LARGE EXCAVATOR		Every 1000 hours			
		Fuel Tank	Hydraulic Filter Change		Swing Drive
Sales Model	Serial Number Prefix	Fuel Cap Filter	Case Drain Filter	Pilot System Filter	Oil Quantity - Gallon (Liter) TDTO
336D	JBT	350-7735	093-7521	51-8670	5 (19)
	KKT01098 - KKT99999	9X-2205			
	KKT00001 - KKT01097	9X-2205			
336D L	M4T	9X-2205			
	PRF00001 - PRF01346	350-7735			
	W3K	350-7735			
336D2	FAJ	350-7735	093-7521	51-8670	5 (19)
	WDC				
336D2 L	HBK				
	YCF				
	ZCT				

LARGE EXCAVATOR		Every 2000 hours		
		Final Drive	Hydraulic Filter Change	
Sales Model	Serial Number Prefix	Oil Quantity, each drive - Gallon (Liter) TDTO	Return Filter (element only)	Return Filter Service Kit
336D	JBT	2.1 (8)	179-9806	201-9299**
	KKT			
336D L	M4T			
	PRF			
	W3K			
336D2	FAJ		179-9806 or 581-0828*	201-9299**
	WDC			
336D2 L	HBK			
	YCF			
	ZCT			

*581-0828 is High efficiency return hydraulic filter with high stiffness casing. Optional for certain D2 models.

**Kit includes 179-9806 Element

PLANNED MAINTENANCE

LARGE EXCAVATOR		As Needed and High Interval Parts								
		Engine Air			Cabin Air		Hydraulic Oil Change		Engine Coolant	Engine Crankcase
Sales Model	Serial Number Prefix	Primary Element	Secondary Element	Precleaner	Fresh Air Element	AC/Recirculating Air Filter	Oil Quantity - Gallon (Liter) HYDO Advanced	Tank Breather	Cat® ELC Coolant Extender	Breather
336D	JBT	142-1339 (Standard Efficiency)	142-1404							
	KKT									
336D L	M4T	220-0453 (Ultra High Efficiency)								
	PRF									
336D2	W3K			130-3280	293-1184	546-0006	51.2 (194)	227-0590	191-5152	240-0041
	FAJ									
336D2 L	WDC	142-1339 (Standard Efficiency) 220-0453 (Ultra High Efficiency)	142-1404							
	HBK	453-5509	471-6955							
	YCF	142-1339 (Standard Efficiency) 220-0453 (Ultra High Efficiency)	142-1404							
	ZCT									



GROUND ENGAGING TOOLS (GET)

This chart applicable only for machines sold in China

Part Description	Heavy Duty J Series			General Duty J Series*			Cat® Advansys™		
	J400	J460	J550	J400	J460	J550	Advansys 100	Advansys 110	Advansys 130
Penetration Plus	168-1409	159-0459	159-0559	389-5745	389-5747	-	505-4103	505-4113	381-4089
General Duty	7T-3402	9W-8452	9W-8552	-	-	-	505-4106	505-4116	381-4088
Heavy Duty	-	-	-	-	-	-	505-4002	505-4012	368-3791
Heavy Duty Long Life (ARM)	-	-	-	-	-	-	505-4003	505-4013	368-3857
Leveling Edge Conversion (LEC)	-	-	-	-	-	-	505-4005	-	-
Wide	107-3400	107-3450	107-3550	-	-	-	505-4100	505-4110	381-4091
Penetration	6Y-7409	9W-8459	9W-8559	-	-	-	505-4101	505-4111	381-4093
Penetration Long Life (ARM)	124-7409	116-7459	113-0559	-	-	-	505-4102	505-4112	368-3858
Spike	159-0400	159-0450	159-0550	-	-	-	505-4104	505-4114	381-4090
Double Spike	135-9408	138-6458	222-7553	-	-	-	505-4105	505-4115	381-4092
Long, Standard	-	-	-	449-2164	449-2167	539-5707	-	-	-
Long, Heavy	-	-	-	389-5744	389-5746	-	-	-	-
Rock Chisel	-	-	-	539-5651	539-5652	539-5706	-	-	-
Pin	116-7408	114-0468	107-3378	-	-	-	-	-	-
Retainer	116-7409	107-3469	107-8559	-	-	-	-	-	-
Retention Kit (Includes Pin and Retainer)	-	-	-	539-5746	539-5756	597-6190	-	-	-

*General Duty tips are for low impact applications only

This chart applicable only for machines sold in South America, Africa, Middle East, Russia and Asia.

Part Description	Heavy Duty J Series			General Duty J Series*			K Series			Cat® Advansys™		
	J400	J460	J550	J400	J460	J550	K100	K110	K130	Advansys 100	Advansys 110	Advansys 130
Penetration Plus	168-1409	159-0459	159-0559	389-5745	389-5747	-	475-5494	467-9823	467-9813	505-4103	505-4113	381-4089
General Duty	7T-3402	9W-8452	9W-8552	-	-	-	475-5497	467-9824	470-7978	505-4106	505-4116	381-4088
Heavy Duty	-	-	-	-	-	-	475-5492	467-9821	467-9815	505-4002	505-4012	368-3791
Heavy Duty Long Life (ARM)	-	-	-	-	-	-	475-5501	472-7763	472-7765	505-4003	505-4013	368-3857
Leveling Edge Conversion (LEC)	-	-	-	-	-	-	475-5503	-	-	505-4005	-	-
Wide	107-3400	107-3450	107-3550	-	-	-	475-5498	470-7986	470-7979	505-4100	505-4110	381-4091
Penetration	6Y-7409	9W-8459	9W-8559	-	-	-	475-5493	467-9822	470-7975	505-4101	505-4111	381-4093
Penetration Long Life (ARM)	124-7409	116-7459	113-0559	-	-	-	475-5502	472-7764	472-7766	505-4102	505-4112	368-3858
Spike	159-0400	159-0450	159-0550	-	-	-	475-5495	470-7972	470-7976	505-4104	505-4114	381-4090
Double Spike	135-9408	138-6458	222-7553	-	-	-	475-5496	470-7973	470-7977	505-4105	505-4115	381-4092
Long, Standard	-	-	-	449-2164	449-2167	597-6192**	-	-	-	-	-	-
Long, Heavy	-	-	-	389-5744	389-5746	-	-	-	-	-	-	-
Rock Chisel	-	-	-	539-5748**	539-5758**	597-6191**	-	-	-	-	-	-
Pin	116-7408	114-0468	107-3378	116-7408	114-0468	-	-	-	-	-	-	-
Retainer	116-7409	107-3469	107-8559	116-7409	107-3469	-	220-9090	286-2110	220-9130	-	-	-
Slag Retainer	-	-	-	-	-	-	-	309-1119	2322139	-	-	-

*General Duty tips are for low impact applications only.

**Pins and Retainers included in these serviceable Tip Kits.

GROUND ENGAGING TOOLS (GET)

This chart applicable only for machines sold in North America, Australia, New Zealand, and Asia Pacific

Part Description	Heavy Duty J Series			General Duty J Series*		K Series			Cat® Advansys™		
	J400	J460	J550	J400	J460	K100	K110	K130	Advansys 100	Advansys 110	Advansys 130
Penetration Plus	168-1409	159-0459	159-0559	389-5745	389-5747	475-5494	467-9823	467-9813	505-4103	505-4113	381-4089
General Purpose	7T-3402	9W-8452	9W-8552	-	-	475-5497	467-9824	470-7978	505-4106	505-4116	381-4088
Heavy Duty	-	-	-	-	-	475-5492	467-9821	467-9815	505-4002	505-4012	368-3791
Heavy Duty Long Life (ARM)	-	-	-	-	-	475-5501	472-7763	472-7765	505-4003	505-4013	368-3857
Leveling Edge Conversion (LEC)	-	-	-	-	-	475-5503	-	-	505-4005	-	-
Wide	107-3400	107-3450	107-3550	-	-	475-5498	470-7986	470-7979	505-4100	505-4110	381-4091
Penetration	6Y-7409	9W-8459	9W-8559	-	-	475-5493	467-9822	470-7975	505-4101	505-4111	381-4093
Penetration Long Life (ARM)	124-7409	116-7459	113-0559	-	-	475-5502	472-7764	472-7766	505-4102	505-4112	368-3858
Spike	159-0400	159-0450	159-0550	-	-	475-5495	470-7972	470-7976	505-4104	505-4114	381-4090
Double Spike	135-9408	138-6458	222-7553	-	-	475-5496	470-7973	470-7977	505-4105	505-4115	381-4092
Long	-	-	-	449-2164	449-2167	-	-	-	-	-	-
Long, Heavy	-	-	-	389-5744	389-5746	-	-	-	-	-	-
Rock Chisel	-	-	-	-	-	-	-	-	-	-	-
Pin	116-7408	114-0468	107-3378	116-7408	114-0468	-	-	-	-	-	-
Retainer	116-7409	107-3469	107-8559	116-7409	107-3469	220-9090	286-2110	220-9130	-	-	-
Slag Retainer	-	-	-	-	-	-	309-1119	2322139	-	-	-

*General Duty tips are for low impact applications only.



CAB GLASS AND ACCESSORIES

Sales Model	Serial Number Prefix	Part Description	Part Number
336D, 336D L	JBT, PRF, W3K, KKT, M4T	Machine Security System	237-5920
		Radio Group (AM/FM)	251-0538
		Handrail (Front Right)	256-1644
		Step (For Track Shoes Up to 32"/800mm wide)	235-7764
		Fender and Cover with Step	262-2595
		Seat and Mounting (High Back, Tilt)	327-6501
		Seat Armrest (Left)	259-7347
		Seat Armrest (Right)	259-7346
	JBT, PRF, KKT, M4T	Overhead Guard	164-0497
		Front Window Guard	171-7485
		Falling Objects Guard (Overhead and Front)	178-5549
		Floor Mat	240-5073
		Horn (Electric)	267-8071
		Window Washer	229-9070
		Seat Belt (Retractable)	305-0467
	JBT, PRF, KKT	Cab Windows (Door)	151-6792
		Swivel Guard Kit (Standard)	471-1988
		Swivel Guard Kit (Heavy Duty)	471-1992
		Handrail and Step	298-4288
		Handrail	298-4286
	JBT, M4T	Step	308-8881
		Cab Window (Front Lower)	388-9108
	JBT	Cab Windows (Sides and Rear)	388-9107
		Cab Window (Front Upper)	388-9116
	PRF, W3K, KKT, M4T	Window Wiper (Front Upper)	436-1116
		Sun Screen (Windshield)	245-7881
	PRF, W3K, KKT	Window Wiper (Front Upper)	324-6594
		Vandalism Guard Storage Rack	237-8801
		Cab Windows (Sides and Rear)	235-8909
		Cab Window (Rear)	189-2778
	PRF, KKT	Cab Window (Front Upper)	139-7101
		Foot Switch Control (On/Off)	270-6107
		Console Adjustment Kit	316-8872
	W3K, M4T	Cab Windows (Front Lower)	176-1958
		Window Guard with Flood Lights	215-6662
	W3K	Front Window and Top Guard with Flood Lights	216-0611
		Cab Windows (Door)	225-0326
		Cab Window (Front Lower)	227-5354
	KKT	Floor Mat	240-5071
		Cab Window (Front Upper)	139-7101
		Cab Windows (Front Lower)	176-1958
	M4T	Sunscreen (Windshield)	245-7881
		Cab Windows (Door)	151-6792
		Cab Windows (Front Upper)	388-9109
		Window Wiper (Front Upper)	324-6594

Sales Model	Serial Number Prefix	Description	Part Number	
336D2, 336D2 L	FAJ, WDC, HBK, YCF, ZCT	Machine Security System	237-5920	
		Cab Windows (Door)	151-6792	
		Cab Window (Front Upper)	388-9116	
		Cab Window (Front Lower)	388-9108	
		Cab Windows (Sides and Rear)	388-9107	
		Floor Mat	240-5073	
		Horn (Electric)	267-8071	
		Window Washer	229-9070	
		Handrail (Front Right Side)	256-1644	
		Fender and Cover with Step	444-5311	
		Seat Armrest (Left)	259-7347	
		Seat Armrest (Right)	259-7346	
		Storage Box	444-6735	
		FAJ, WDC, HBK, YCF	Vandal Guard, no visor	499-3842
	Front Window Guard Kit		457-3998	
	Falling Objects Guard (Overhead and Front)		489-6296	
	WDC, HBK, YCF, ZCT	Window Wiper (Front Upper)	436-1116	
		Sun Screen (Windshield)	245-7881	
		Radio Group (AM/FM)	251-0538	
		Seat and Mounting (High Back, Tilt)	327-6501	
	WDC, HBK, YCF	Seat Belt (Retractable)	305-0467	
		Overhead Guard	164-0497	
	WDC, YCF, ZCT	Front Window Guard	171-7485	
		Swivel Guard Kit (Standard)	471-1988	
	ZCT	WDC, YCF	Mesh Windshield Guard, Full Front	495-9559
		Front Window Guard with Flood Lights	215-6662	
		Front Window and Top Guard with Flood Lights	216-0611	
		Window Wiper (Front Upper)	324-6594	



MIRRORS, CAMERAS, MONITORS AND LIGHTS

Sales Model	Serial Number Prefix	Part Description	Part Number
336D	JBT, KKT	Mirror (Rear View)	394-9460
		Mirror Mounting Bracket (Rear View)	346-7375
		Mirror with Bracket (Rear View)	142-3846
		Operator Monitor	386-3457
		Flood Lighting, Cab (Front, Right and Left)	366-9343
		Flood Lighting, Mass Boom	238-1586
	JBT	Flood Lighting, Falling Objects Guard System	314-3900
	KKT	Work Area Vision System Camera (Rear)	336-6684
		Rear View Camera Bracket	251-4162
			Lighting Rebuild Kit
336D L	PRF, W3K, M4T	Mirror (Rear View)	394-9460
		Mirror Mounting Bracket (Rear View)	346-7375
		Mirror with Bracket (Rear View)	142-3846
		Operator Monitor	386-3457
	PRF	Work Area Vision System Camera (Rear)	336-6684
		Rear View Camera Bracket	251-4162
	PRF, W3K, M4T	Flood Lighting, Cab (Front, Right and Left)	366-9343
		Flood Lighting, Mass Boom	238-1586
	PRF	Flood Lighting, Falling Objects Guard System	314-3900
			Lighting Rebuild Kit
	M4T	Work Area Vision System Camera and Monitor	570-0504
	336D2	FAJ	Mirror (Rear View)
Mirror with Bracket (Rear View)			142-3846
Mirror Mounting Bracket (Rear View)			346-7375
Operator Monitor			548-9082
Work Area Vision System Camera and Monitor			570-0504
Lighting Rebuild Kit			489-5118
Flood Light Kit			589-5111
WDC		Mirror (Rear View)	394-9460
		Mirror with Bracket (Rear View)	142-3846
		Mirror Mounting Bracket (Rear View)	346-7375
		Operator Monitor	386-3457
		Rear View Camera Bracket	251-4162
		Flood Lighting, Cab (Front, Right and Left)	366-9343
		Flood Lighting, Mass Boom	238-1586
		Flood Lighting, Falling Objects Guard System	314-3900
		Lighting Rebuild Kit	489-5118
		Flood Light Kit	589-5111

Sales Model	Serial Number Prefix	Part Description	Part Number
336D2 L	HBK	Mirror (Rear View)	394-9460
		Mirror with Bracket (Rear View)	142-3846
		Mirror Mounting Bracket (Rear View)	346-7375
		Operator Monitor	548-9082
		Flood Lighting, Cab (Front, Right and Left)	366-9343
		Flood Lighting, Mass Boom	238-1586
		Lighting Rebuild Kit	489-5118
		Flood Light Kit	589-5111
	YCF	Mirror (Rear View)	394-9460
		Mirror with Bracket (Rear View)	142-3846
		Mirror Mounting Bracket (Rear View)	346-7375
		Operator Monitor	386-3457
		Rear View Camera Bracket	251-4162
		Flood Lighting, Cab (Front, Right and Left)	366-9343
		Flood Lighting, Mass Boom	238-1586
		Flood Lighting, Falling Objects Guard System	314-3900
		Lighting Rebuild Kit	489-5118
	Flood Light Kit	589-5111	
	ZCT	Mirror (Rear View)	394-9460
		Mirror with Bracket (Rear View)	142-3846
		Mirror Mounting Bracket (Rear View)	346-7375
		Operator Monitor	386-3457
		Flood Lighting, Cab (Front, Right and Left)	366-9343
Flood Lighting, Mass Boom		238-1586	

ACCESS DOORS

Sales Model	Serial Number Prefix	Part Description	Part Number	
336D	JBT	Roof Hatch	431-8611	
		Air Cleaner and Battery Access Door	298-3191	
		Radiator Access Door	421-4421	
		Pump Compartment Access Door	428-8975	
		Cab Door	388-9105	
	KKT	Roof Hatch	139-7099	
		Air Cleaner and Battery Access Door	298-3191	
		Radiator Access Door	421-4423	
		Fuel and Hydraulic Tank Access Door	396-4447	
		Pump Compartment Access Door	421-4424	
		Cab Door	336-1137	
336D L	PRF	Roof Hatch	259-7350	
		Air Cleaner and Battery Access Door	298-3191	
		Radiator Access Door	421-4423	
		Fuel and Hydraulic Tank Access Door	396-4447	
		Pump Compartment Access Door	421-4424	
			Cab Door	346-8061
	W3K	Roof Hatch	139-7099	
		Air Cleaner and Battery Access Door	298-3191	
		Radiator Access Door	289-6893	
		Pump Compartment Access Door	289-6895	
			Cab Door	331-4074
	M4T	Roof Hatch	259-7350	
		Air Cleaner and Battery Access Door	298-3191	
		Radiator Access Door	289-6893	
		Pump Compartment Access Door	289-6895	
		Cab Door	388-9105	
336D2	FAJ	Roof Hatch	431-8611	
		Air Cleaner and Battery Access Door	466-1050	
		Radiator Access Door	421-4423	
		Fuel and Hydraulic Tank Access Door	396-4447	
		Cab Door	388-9105	
	WDC	Roof Hatch	431-8611	
		Radiator Access Door	421-4423	
		Fuel and Hydraulic Tank Access Door	396-4447	
		Pump Compartment Access Door	421-4424	
		Cab Door	388-9105	

Sales Model	Serial Number Prefix	Part Description	Part Number
336D2 L	HBK	Roof Hatch	431-8611
		Air Cleaner and Battery Access Door	466-1050
		Radiator Access Door	421-4423
		Fuel and Hydraulic Tank Access Door	396-4447
		Cab Door	388-9105
	YCF	Roof Hatch	431-8611
		Radiator Access Door	421-4423
		Fuel and Hydraulic Tank Access Door	396-4447
		Pump Compartment Access Door	421-4424
		Cab Door	388-9105
	ZCT	Roof Hatch	259-7350
		Radiator Access Door	421-4423
		Fuel and Hydraulic Tank Access Door	396-4447
		Pump Compartment Access Door	421-4424
		Cab Door	388-9105



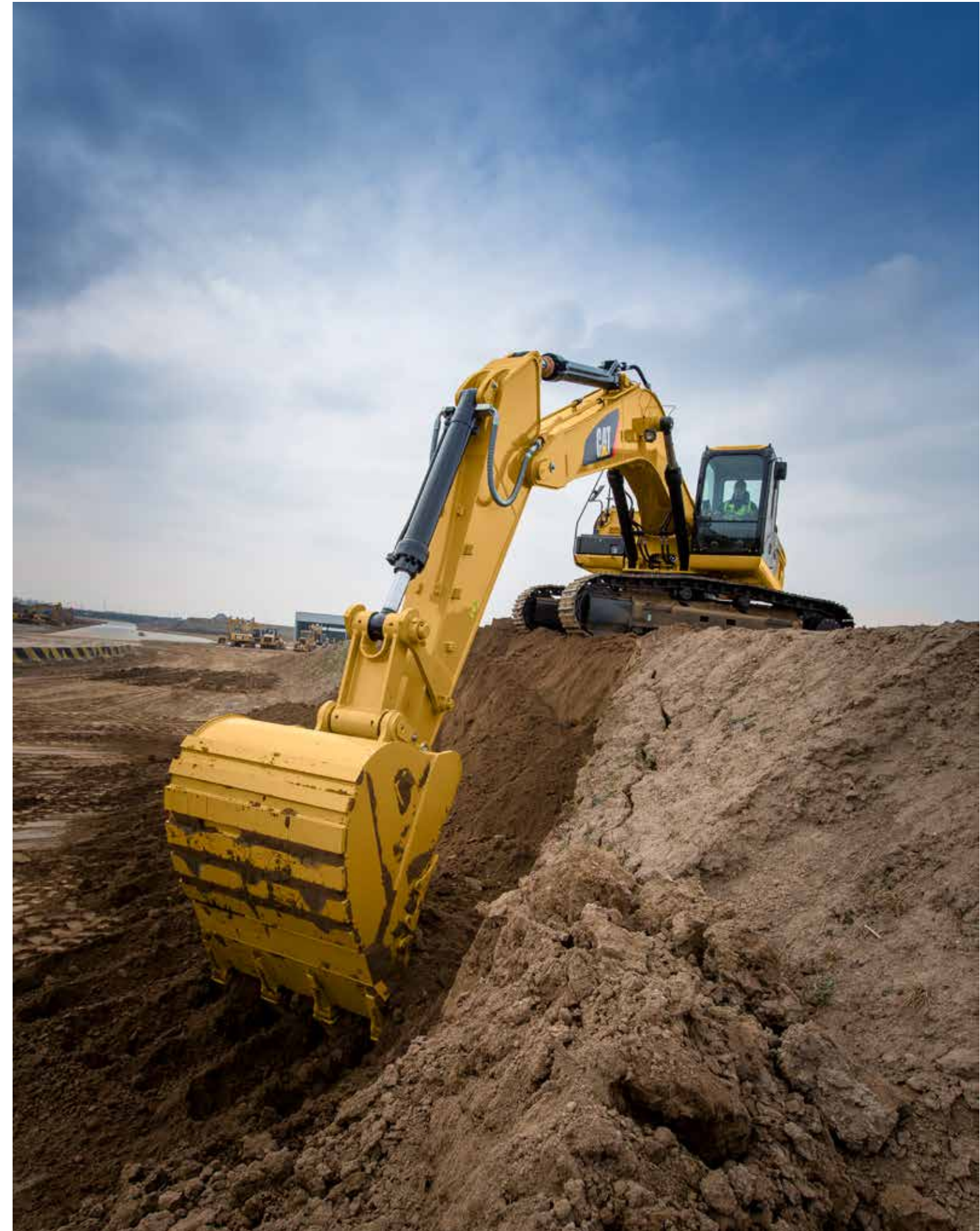
UNDERCARRIAGE

Sales Model	Serial Number Prefix	Rollers	Sprockets	Steel Track Assembly	Steel Track Shoe
336D	JBT	300-4545 Track Carrier 428-8691 Single Flange	6Y-5685	216-4026 600mm, Triple Grouser Shoe Grease Lubricated Track	201-9118 (Link Assembly) 126-5066 (Shoe) 318-2559 (Bolt) 311-8150 (Nut)
				347-2342 600mm, Double Grouser Shoe Grease Lubricated Track	213-1972 (Link Assembly) 484-9176 (Shoe) 318-2558 (Bolt) 311-8150 (Nut)
	KKT	300-4545 Track Carrier 428-8691 Single Flange 490-5283 Single Flange	6Y-5685	347-2342 600mm, Double Grouser Shoe Grease Lubricated Track	213-1972 (Link Assembly) 484-9176 (Shoe) 318-2558 (Bolt) 311-8150 (Nut)
				347-2339 600mm, Triple Grouser Shoe Grease Lubricated Track	213-1972 (Link Assembly) 126-5066 (Shoe) 318-2559 (Bolt) 311-8150 (Nut)
336D L	PRF	300-4545 Track Carrier 428-8691 Single Flange	6Y-5685	347-2343 600mm, Triple Grouser Shoe Grease Lubricated Track	213-1971 (Link Assembly) 126-5066 (Shoe) 318-2559 (Bolt) 311-8150 (Nut)
				331-7388 700mm, Double Grouser Shoe Grease Lubricated Track	213-1971 (Link Assembly) 238-8591 (Shoe) 318-2559 (Bolt) 311-8150 (Nut)
				260-9446 850mm, Triple Grouse Shoe Grease Lubricated Track	201-9119 (Link Assembly) 6Y-8180 (Shoe) 318-2558 (Bolt) 311-8150 (Nut)
	W3K	300-4545 Track Carrier	6Y-5685	331-7388 700mm, Double Grouser Shoe Grease Lubricated Track	213-1971 (Link Assembly) 238-8591 (Shoe) 318-2559 (Bolt) 311-8150 (Nut)
				241-0985 700mm, Triple Grouser Shoe Grease Lubricated Track	201-9119 (Link Assembly) 238-8591 (Shoe) 318-2559 (Bolt) 311-8150 (Nut)
				347-2344 800mm, Triple Grouser Shoe Grease Lubricated Track Trapezoid	213-1971 (Link Assembly) 238-8592 (Shoe) 318-2558 (Bolt) 311-8150 (Nut)
				331-7389 850mm, Triple Grouse Shoe Grease Lubricated Track	213-1971 (Link Assembly) 6Y-8180 (Shoe) 318-2558 (Bolt) 311-8150 (Nut)
				224-1255 850mm, Triple Grouser Shoe Grease Lubricated Track Heavy-Duty, Trapazoid	213-1971 (Link Assembly) 139-0246 (Shoe) 318-2558 (Bolt) 311-8150 (Nut)

Sales Model	Serial Number Prefix	Rollers	Sprockets	Steel Track Assembly	Steel Track Shoe
336D L	M4T	300-4545 Track Carrier	6Y-5685	347-2345 600mm, Double Grouser Shoe Grease Lubricated Track Heavy Duty	213-1971 (Link Assembly) 484-9176 (Shoe) 318-2558 (Bolt) 311-8150 (Nut)
				331-7388 700mm, Double Grouser Shoe Grease Lubricated Track	213-1971 (Link Assembly) 238-8591 (Shoe) 318-2559 (Bolt) 311-8150 (Nut)
				203-0861 750mm, Triple Grouser Shoe Grease Lubricated Track	201-9119 (Link Assembly) 121-0141 (Shoe) 318-2558 (Bolt) 311-8150 (Nut)
				260-9446 850mm, Triple Grouse Shoe Grease Lubricated Track	201-9119 (Link Assembly) 6Y-8180 (Shoe) 318-2558 (Bolt) 311-8150 (Nut)
336D2	FAJ	300-4545 Track Carrier 428-8691 Single Flange	6Y-5685	507-8530 600mm, Double Grouser Shoe Grease Lubricated Track	557-8529 (Link Assembly) 524-3184 (Shoe) 301-2299 (Bolt) 150-4742 (Nut)
				524-3169 600mm, Double Grouser Shoe Grease Lubricated Track Heavy Duty	524-3181 (Link Assembly) 524-3184 (Shoe) 301-2299 (Bolt) 150-4742 (Nut)
				347-2339 600mm, Triple Grouser Shoe Grease Lubricated Track	213-1972 (Link Assembly) 126-5066 (Shoe) 318-2559 (Bolt) 311-8150 (Nut)
	WDC	300-4545 Track Carrier 428-8691 Single Flange	6Y-5685	347-2343 600mm, Triple Grouser Shoe Grease Lubricated Track	213-1971 (Link Assembly) 126-5066 (Shoe) 318-2559 (Bolt) 311-8150 (Nut)
347-2345 600mm, Double Grouser Shoe Grease Lubricated Track Heavy Duty				213-1971 (Link Assembly) 484-9176 (Shoe) 318-2558 (Bolt) 311-8150 (Nut)	
				331-7388 700mm, Double Grouser Shoe Grease Lubricated Track	213-1971 (Link Assembly) 238-8591 (Shoe) 318-2559 (Bolt) 311-8150 (Nut)

UNDERCARRIAGE

Sales Model	Serial Number Prefix	Rollers	Sprockets	Steel Track Assembly	Steel Track Shoe
336D2 L	HBK	300-4545 Track Carrier 428-8691 Single Flange	6Y-5685	507-8530 600mm, Double Grouser Shoe Grease Lubricated Track	557-8529 (Link Assembly) 524-3184 (Shoe) 301-2299 (Bolt) 150-4742 (Nut)
				524-3169 600mm, Double Grouser Shoe Grease Lubricated Track Heavy Duty	524-3181 (Link Assembly) 524-3184 (Shoe) 301-2299 (Bolt) 150-4742 (Nut)
				347-2343 600mm, Triple Grouser Shoe Grease Lubricated Track	213-1971 (Link Assembly) 126-5066 (Shoe) 318-2559 (Bolt) 311-8150 (Nut)
	YCF	300-4545 Track Carrier 428-8691 Single Flange	6Y-5685	347-2343 600mm, Triple Grouser Shoe Grease Lubricated Track	213-1971 (Link Assembly) 126-5066 (Shoe) 318-2559 (Bolt) 311-8150 (Nut)
				347-2345 600mm, Double Grouser Shoe Grease Lubricated Track Heavy Duty	213-1971 (Link Assembly) 484-9176 (Shoe) 318-2558 (Bolt) 311-8150 (Nut)
				331-7388 700mm, Double Grouser Shoe Grease Lubricated Track	213-1971 (Link Assembly) 238-8591 (Shoe) 318-2559 (Bolt) 311-8150 (Nut)
	ZCT	300-4545 Track Carrier 428-8691 Single Flange	6Y-5685	347-2345 600mm, Double Grouser Shoe Grease Lubricated Track Heavy Duty	213-1971 (Link Assembly) 484-9176 (Shoe) 318-2558 (Bolt) 311-8150 (Nut)
				331-7388 700mm, Double Grouser Shoe Grease Lubricated Track	213-1971 (Link Assembly) 238-8591 (Shoe) 318-2559 (Bolt) 311-8150 (Nut)
				347-2344 800mm, Triple Grouser Shoe Grease Lubricated Track Trapezoid	213-1971 (Link Assembly) 238-8592 (Shoe) 318-2558 (Bolt) 311-8150 (Nut)



ENGINE PARTS

Sales Model	Serial Number Prefix	Starter		Battery		Alternator			Water Pump			Fuel Injector Pump		Fuel Priming Pump		Turbocharger			Fuel injector			Crankcase Breather	
		New	Quantity	New	Quantity	New	Reman	Quantity	New	Reman	Quantity	New	Quantity	New	Quantity	New	Reman	Quantity	New	Reman	Quantity	New	Quantity
336D	JBT	590-9161	1	263-9574	2	185-5294	10R-9788	1	352-2125	10R-8655	1	267-3362	1	183-2823	1	250-7700	10R-2858	1	557-7633	20R-8968	6	240-0041	1
336D	KKT																						
336D L	M4T																						
	PRF																						
	W3K																						
336D2	FAJ																						
	WDC																						
336D2 L	HBK																						
	YCF																						
	ZCT																						

PUMPS AND MOTORS

Sales Model	Serial Number Prefix	Main Pump (includes head pumps)			Head Pumps		Swing Motor			Travel Motor		
		New	Reman	Quantity	New	Quantity	New	Reman	Quantity	New	Reman	Quantity
336D	JBT	497-8499	20R-0074	1	295-9660	2	334-9979	20R-1758	1	355-5668	10R-2605	1
	KKT											
336D L	M4T											
	PRF											
	W3K											
336D2	FAJ											
	WDC											
336D2 L	HBK											
	ZCT											
	YCF											



Cat Filters Provide Longer Injector Life

Chances are, you don't skip oil changes or regular maintenance on the family car. So why skip planned maintenance on your Cat equipment? Cat fuel filters outperform the competition, with up to 45% longer injector life and up to 80% decreased cost per hour.*



Upgrade Kits to Enhance Your Cat Excavator

Your needs change over time. Enhance your next generation Cat excavator with upgrade kits available to order on **Parts.cat.com**. With kits including cab, safety & security, service & maintenance, guards, attachments and technology, you can find the upgrades you need to improve the performance of your excavator.



Need help?

Your local Cat dealer can provide:

- Technical support
- Customer Value Agreements
- Oil sample analysis
- Parts needed and equipment fit
- Repair financing
- Rental services

Find your local dealer at **www.cat.com** today.



LET'S DO THE WORK.™



To buy Cat parts online, visit **Parts.cat.com**.

PEDJ1217
(Global)

© 2023 Caterpillar. All Rights Reserved. CAT, CATERPILLAR, LET'S DO THE WORK, their respective logos, "Caterpillar Corporate Yellow", the "Power Edge" and Cat "Modern Hex" trade dress as well as corporate and product identity used herein, are trademarks of Caterpillar and may not be used without permission.

