

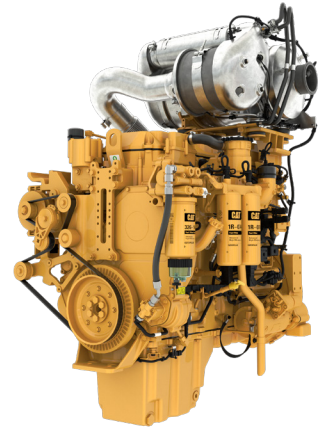
CAT® C13B

U.S. EPA TIER 4 FINAL/EU STAGE V/CHINA NONROAD STAGE IV/
JAPAN 2014/KOREA STAGE V
340-430 KW (456-577 HP)

INDUSTRIAL ENGINE



The Cat® C13B industrial diesel engine is offered in ratings ranging from 250-340 kW (335-456 hp) @ 1800-2100 rpm. These ratings meet U.S. EPA Tier 4 Final, EU Stage V, China Nonroad (NR) Stage IV, Japan 2014, and Korea Stage V emission standards. The C13B engines are ideal choices to power applications in agriculture, aircraft ground support, construction, forestry, general industrial, material handling, and mining.



FEATURES AND BENEFITS

High Power Density

With power density as high as 46 hp/L (34 kW/L), you can look to downsize the displacement and weight of the engine that's currently powering your application.

Common Iron Set

With a simplified non-EGR (exhaust gas recirculation) air system along with single on-engine ECM technology, all ratings can be accessed on a common iron set, allowing for customers to reduce inventory and parts proliferation, as well as streamlining installation across multiple use-cases thereby reducing upfront engineering and designing costs.

Lower Total Cost of Ownership

With several designs and technologies such as proven fuel system and injectors specifically optimized for these engine ratings, as well as a size-reduced high-efficiency SCR, the C13B delivers the lowest possible fluid consumption, thereby reducing total owning and operating costs for the customer.

SPECIFICATION

Cylinders	6 vertical in-line
Displacement, litres (in ³)	12.5 (762.8)
Aspiration	Turbocharged aftercooled
Bore and stroke, mm (in)	130 x 157 (5.1 x 6.2)
Maximum power, kW (hp)	4300 (577)
Rated speed, rpm*	1800-2100
Maximum torque, Nm (lb ft) @ rpm	2634 (1943) @ 1400 rpm
Combustion system	Direct injection (MEUI)
Weight, kg (lb)	1125 (2480)
Rotation (viewed from flywheel)	Anti-clockwise

*For China Nonroad Stage IV engines, a customer configurable rated speed is no longer offered due to regulation requirements. China NR IV requires new and in-use machine conformity checks. Please contact your A&I engineer for further details.

For additional information on all your power requirements, visit www.cat.com/industrial

All information in this document is substantially correct at time of printing and may be altered subsequently. Photographs are for illustrative purposes only and may not reflect final specification. Final weight and dimensions will depend on completed specification. Information subject to selected configuration, and subject to change without notice. Engine power measured per ISO 14396:2002

AEXJ0150 (06-23)

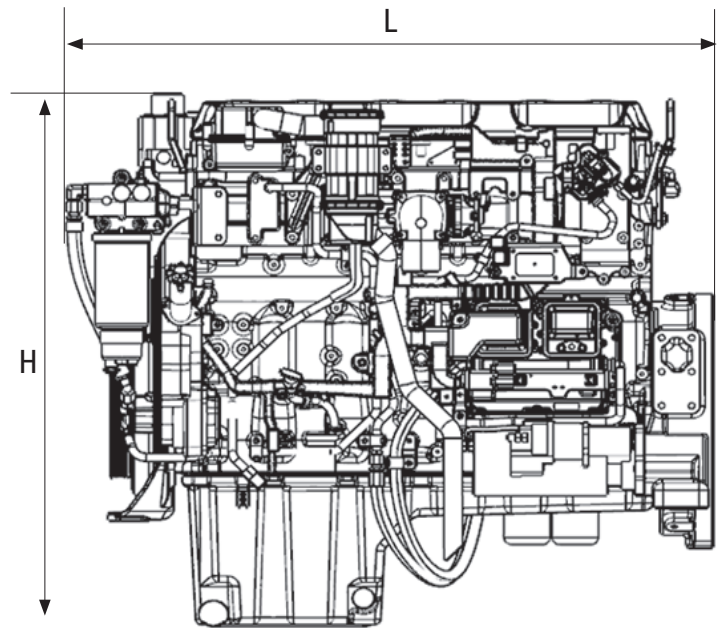
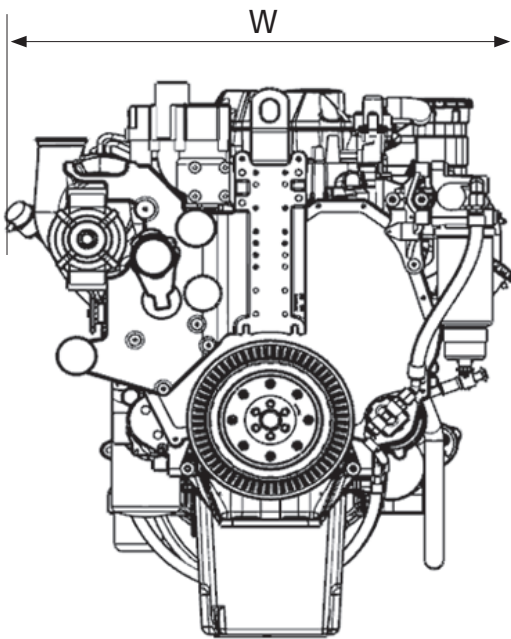
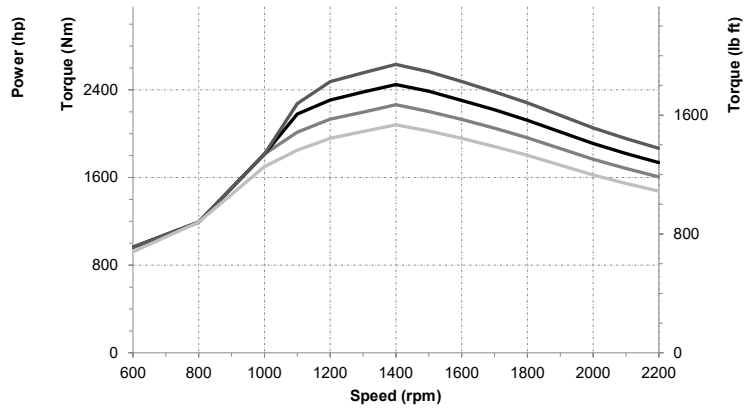
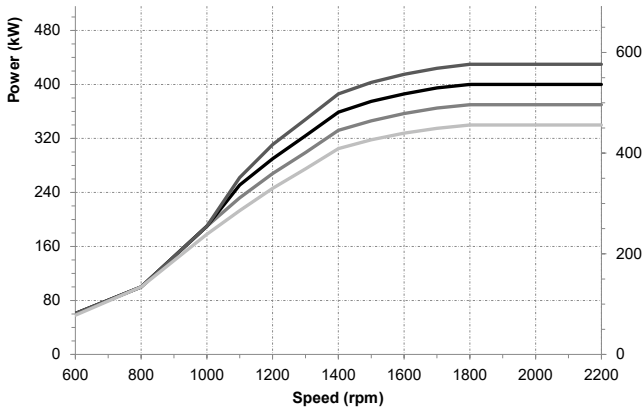
© 2023 Caterpillar. All Rights Reserved. CAT, CATERPILLAR, LET'S DO THE WORK, their respective logos, "Caterpillar Corporate Yellow", the "Power Edge" and Cat "Modern Hex" trade dress as well as corporate and product identity used herein, are trademarks of Caterpillar and may not be used without permission.

CAT® C13B

U.S. EPA TIER 4 FINAL/EU STAGE V/CHINA NONROAD STAGE IV/
JAPAN 2014/KOREA STAGE V
340-430 KW (456-577 HP)



INDUSTRIAL ENGINE



DIMENSIONS AND WEIGHTS (BASE ENGINE)

Length, mm (in)	1274 (50)
Width, mm (in)	994 (39)
Height, mm (in)	1134 (45)
Weight, kg (lb)	1125 (2480)

For additional information on all your power requirements, visit www.cat.com/industrial

All information in this document is substantially correct at time of printing and may be altered subsequently. Photographs are for illustrative purposes only and may not reflect final specification. Final weight and dimensions will depend on completed specification. Information subject to selected configuration, and subject to change without notice. Engine power measured per ISO 14396:2002

AEXJ0150 (06-23)

© 2023 Caterpillar. All Rights Reserved. CAT, CATERPILLAR, LET'S DO THE WORK, their respective logos, "Caterpillar Corporate Yellow", the "Power Edge" and Cat "Modern Hex" trade dress as well as corporate and product identity used herein, are trademarks of Caterpillar and may not be used without permission.