



# METSO IS CRUSHING IT

WITH A RELIABLE CAT® ENGINE, METSO'S LOKOTRACK® LT120™ IS A FORCE FOR THE QUARRYING INDUSTRY

## Metso

### CUSTOMER:

[Metso](#)

### PRODUCT:

Lokotrack LT120 Mobile Jaw Crusher

### LOCATION:

Finland

### SCOPE OF ENGINE USE:

CAT® C9.3B, 415 HP

### CAT® DEALER:

Avesco Finland

[www.avesco-cat.fi/](http://www.avesco-cat.fi/)



### FEATURED TOPIC:

Cat® C9.3B

The demand for aggregate is endless. Crushing the solid rock in Finland takes hard-core equipment and a lot of power. That is why Metso and Caterpillar share a strong reputation in the aggregate industry. Metso builds a range of machines for aggregates and mining, including the Lokotrack® mobile crushers that can handle the challenging crushing conditions everywhere in the world and relies on Cat® engines to power those machines.

*"Our equipment is designed for Finnish rock, which is extremely hard. We're known for providing the best hard-core screening and crushing equipment."*

- Pasi Tulonen, Product Manager, Metso Lokotrack, Aggregates Business Area

Metso is a global company, dealing with aggregates and mining customers in all parts of the world. It has worked together with its Cat dealer, Avesco Finland, for nearly twenty years. Cat engines have been used in Lokotrack machines since the turn of the century. It credits the power range and durability of Cat engines for the continued relationship.

*"The relationship comes from global support and reliability. And the fact that Caterpillar is a known brand that gives value to our brand."*

- Pasi Tulonen, Product Manager, Metso Lokotrack, Aggregates Business Area.

## THE EVOLUTION OF A JAW CRUSHER

The first Lokotrack LT120 mobile jaw crusher saw daylight in 1985, and Metso is constantly improving and updating the machine to meet industry standards. Innovative and portable from site to site, the Lokotrack LT120 is considered a cornerstone of the iconic Lokotrack equipment.

As the Lokotrack LT120 evolved, its engine needed to upgrade as well. Avesco helped configure engines to provide the power needed for crushing rock. Quarry contractors prefer a more compact engine package, as a lighter engine allows for significant fuel savings. The Lokotrack LT120 is now powered by the EU Stage V Cat C9.3B to meet these industry demands.





*"Emission regulations have changed a lot over the years. That means we have to find more space in our machines. That's a huge benefit that Cat engines can be used with the engine-mounted aftertreatment. You can plug and play in a way that's easy."*

*- Jukka-Pekka Rantanen, Engineering Manager, Metso Lokotrack, Aggregates Business Area*

The Lokotrack LT120 is the second-largest mobile jaw crusher Metso produces for mining and aggregate applications. A lot of engineering hours went into perfecting the Lokotrack LT120 before the unit was offered to ensure it would be an efficient machine for crushing hard rock types, such as granite, basalt and gneiss. The features of the crusher, such as a

large feed opening for high-capacity production and a hydraulic drive for smoother operation, give the Lokotrack LT120 a strong reputation in the industry for uptime and durability. That reputation, along with the brand recognition of Cat engines, gives customers peace of mind knowing they're making a sound investment.

## COLLABORATING ON THE RIGHT ENGINE

The engine that runs the Lokotrack LT120 did not come straight from a shelf. Avesco and Metso spent many hours consulting and collaborating to find the right power fit for the unit. The process began in 3-D stages until the design could be brought to life. The Cat C9.3B engine chosen to power the crusher was the right mix of compact, powerful and "easy to install."

Metso wanted the engine for the LT120 to be sustainable, with fewer emissions and less fuel consumption. Caterpillar was able to provide the EU Stage V engine that meets sustainability goals as well as power needs.

*"It all starts with creating a specification for the engine and that means cooperation with the dealer [Avesco]. In terms of what is needed on our side and what is available from Avesco, cooperation is really needed to have the correct specification. Caterpillar has that availability, and Cat engines make sense from a technical and commercial point of view."*

*- Jukka-Pekka Rantanen, Engineering Manager, Metso Lokotrack, Aggregates Business Area*





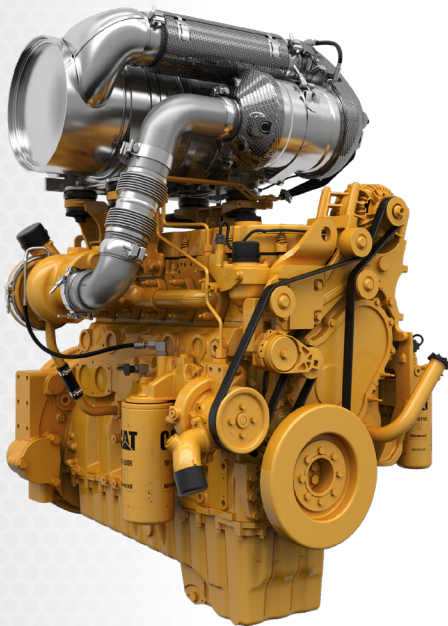
## A GLOBAL COMPANY NEEDS GLOBAL SUPPORT

When customers have an issue with mobile crusher equipment, they want quick solutions. Metso and Caterpillar are both heavily invested in providing fast support and service to keep jobsites productive. Caterpillar has an extensive list of dealers around the world. The availability of genuine Cat parts and the convenience of expert service play a role in the relationship between Metso and Caterpillar.

Metso offers Equipment Protection Services (EPS) on its equipment, and that includes an option for Cat Engine Extended Service Coverage. The program offers customers full Cat engine coverage for their Metso machine for 5 years or 10,000 hours, helping them avoid unexpected repair costs while giving them access to the global Cat dealer network. Working together, Metso and Caterpillar strive to maintain the high standard that is expected from the aggregate industry.



**“That’s a huge benefit. You can plug and play in a way that’s easy.”**



**LET'S DO THE WORK.™**

© 2023 Caterpillar. All Rights Reserved. CAT, CATERPILLAR, LET'S DO THE WORK, their respective logos, "Caterpillar Corporate Yellow," the "Power Edge" and Cat "Modern Hex" trade dress, as well as corporate and product identity used herein, are trademarks of Caterpillar and may not be used without permission.

