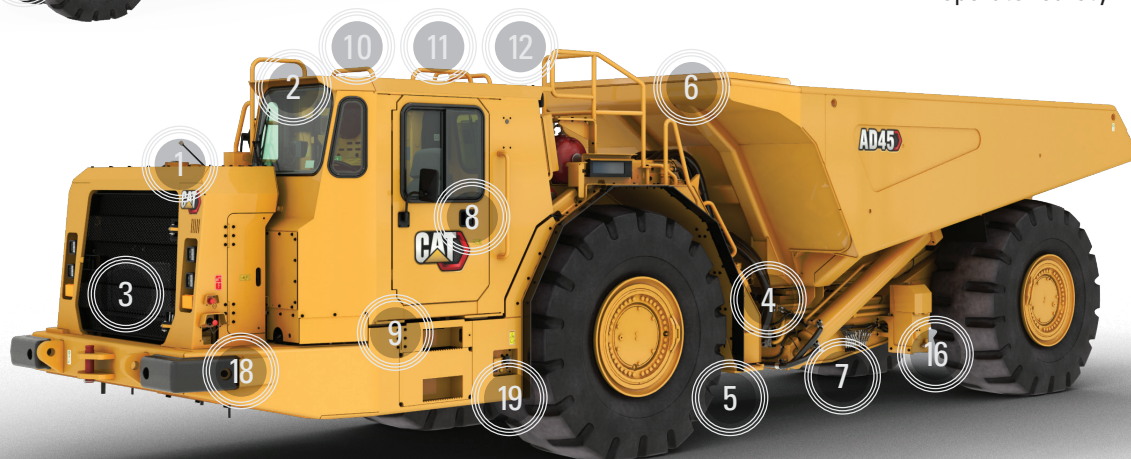


## THE CAT® AD45 UNDERGROUND TRUCK

### A RELIABLE TRUCK WITH EMISSION CONTROL OPTIONS

1. Powered by a Cat® C18 engine, which provides efficient fuel management, quick response times, high productivity and exceptional service life
2. Optional flow-through diesel particulate filter, developed for the VR engine, that is suitable for mine sites using 15ppm sulphur content fuel, further reducing particulate matter by ~ 51%
3. Radiator guard that swings open to allow service access; high-efficiency radiator as optional cooling package
4. Mechanical powertrain and power shift transmission that offer unmatched operating efficiency and control on steep grades and poor underfoot conditions
5. Superior braking performance with integrated braking system; four-wheel, multiple disc brakes; and Automatic Retarder Control
6. Frame constructed using box sections with stiff frame beams to resist twisting forces
7. Articulating and oscillating hitch that helps the truck maintain all-wheel ground contact even in rough terrain, providing better control and reducing stress on the hitch
8. Continuous focus on operator's safety and comfort, including ROPS/FOPS cabin with ergonomic layout, Operator Present System and interior and exterior safety details
9. In-cab emission display for the Stage V model, which allows emission status monitoring
10. Product Link™ Elite (PLE) System for Machine Health Monitoring
11. Cat MineStar™ Solutions, including Command for underground, managed through onboard electronics; available automation-ready from the factory
12. Optional reverse and cab loading cameras, plus additional camera mounted on the right-hand side to enhance visibility for the EU Stage V model
13. Truck Payload Measurement System (TPMS), which offers payload scoreboards on both sides of the truck to provide the LHD operator with visual real-time payload data
14. Four truck body options available including one ejector body, which can be easily removed and replaced with a dump body for a more versatile machine
15. Ansul LVS (wet) Fire Suppression available; fire suppression activation from within the cab
16. Optional Autolube system available
17. Tray locking pins to ensure safety when performing maintenance under the body
18. E-stops and fire suppression activation point
19. Illuminated steps for operator safety



## THE CAT® AD45 UNDERGROUND TRUCK



45 000 kg / 99,208 lb  
NOMINAL PAYLOAD CAPACITY

18.0-25.1 m<sup>3</sup> / 23.5-32.8 yd<sup>3</sup>  
BODY CAPACITIES

446 kW / 598 hp  
ENGINE POWER  
STAGE V ENGINE – ISO14396:2002



### SUPERIOR CONTROL, COMFORT AND SAFETY FOR OPERATOR

- » Optional enclosed cab that is fully sealed and offers sound and vibration suppression, filtered air and HVAC for operator comfort.
- » Controls, levers, switches and gauges that are positioned to maximize productivity and minimize operator fatigue.
- » Ergonomic, fully adjustable suspension seat for superior comfort during long shifts.
- » Suspension for the front axle that ensures operator comfort.
- » Automatic retarding controls, which allow the operator to maintain optimum engine speeds for faster downhill hauls and greater productivity.

### DURABILITY AND SERVICABILITY

- » Rugged design with strong frame, articulating and oscillating hitch and independent suspension cylinders for long life.
- » Ground-level access for convenient servicing of all tanks, filters, lubrication points and compartment drains; electric fuel priming and remote mounted fuel filters for easier serviceability; and available Optional Autolube system.
- » Cat Electronic Technician (Cat ET) service tool, which enables quick electronic diagnosis of machine performance and key diagnostic data for effective maintenance and repairs.



### HAUL MORE EVERY LOAD AND EVERY CYCLE

- » Reliable, efficient performer that is perfectly matched with the next generation R1700 underground loader for peak production.
- » Cat C18 engine provided in EU Stage V, Tier 3/Stage IIIA or Tier 2/Stage II VR (ventilation reduction) configurations.
- » Transmission that is built tough for long life in rugged conditions, with a lock-up torque converter and clutch that deliver superior efficiency and a smoother, more comfortable ride.
- » Cat truck bodies, which deliver optimal strength, capacity and durability and are designed and matched with the integrated chassis system for optimum structural reliability, durability and long life.
- » Two-stage hoist cylinders that provide fast dump cycle times of 13 seconds for raise and 24 seconds for lower with snubbing function enabled to protect the frame and components at the end of the lowering cycle.



### SAFETY

- » Operator Present System, which protects the machine and operator from uncontrolled machine movements.
- » Service area located on cold side of engine.
- » Cat electrical components – like connectors, wiring harnesses and ECMs – that are designed to live in corrosive environments.
- » Tray locking pins to ensure safety when performing maintenance under the body.
- » Hand rails and steps that provide 3-point contact for access to the machine and cabin, plus illuminated steps for operator safety.

