



Cat[®] CP7

Padfoot Drum Vibratory Soil Compactor

The Cat[®] CP7 features a padfoot drum and is ideally suited for cohesive and semi-cohesive soil applications.

Comfortable and Ergonomic Operator Station

- Features adjustable seat with integrated multifunction LCD display and control console.
- Outstanding visibility to the front and rear of machine.
- Low sound levels and vibration for greater operator comfort and productivity.

Rear Vision Camera

- The rear vision camera enhances visibility for more complete operator control and safety.

Exceptional Propel System

- Built around the exclusive Cat dual pump propel system, two pumps provide separate dedicated flow to drum drive motor and rear axle motor for exceptional gradeability and traction in forward and reverse.

Virtually Maintenance Free

- Maintenance-free hitch bearings.
- Extended maintenance intervals for vibratory system and hydraulic system, providing more uptime and lower maintenance costs.

Powerful Cat C4.4B Engine

- Meets regional emissions standards.

Involuted Oval Padfoot Design

- Provides deeper compaction than square-faced pad designs. Square pad design also available.

Cat® CP7 Padfoot Drum Vibratory Soil Compactor

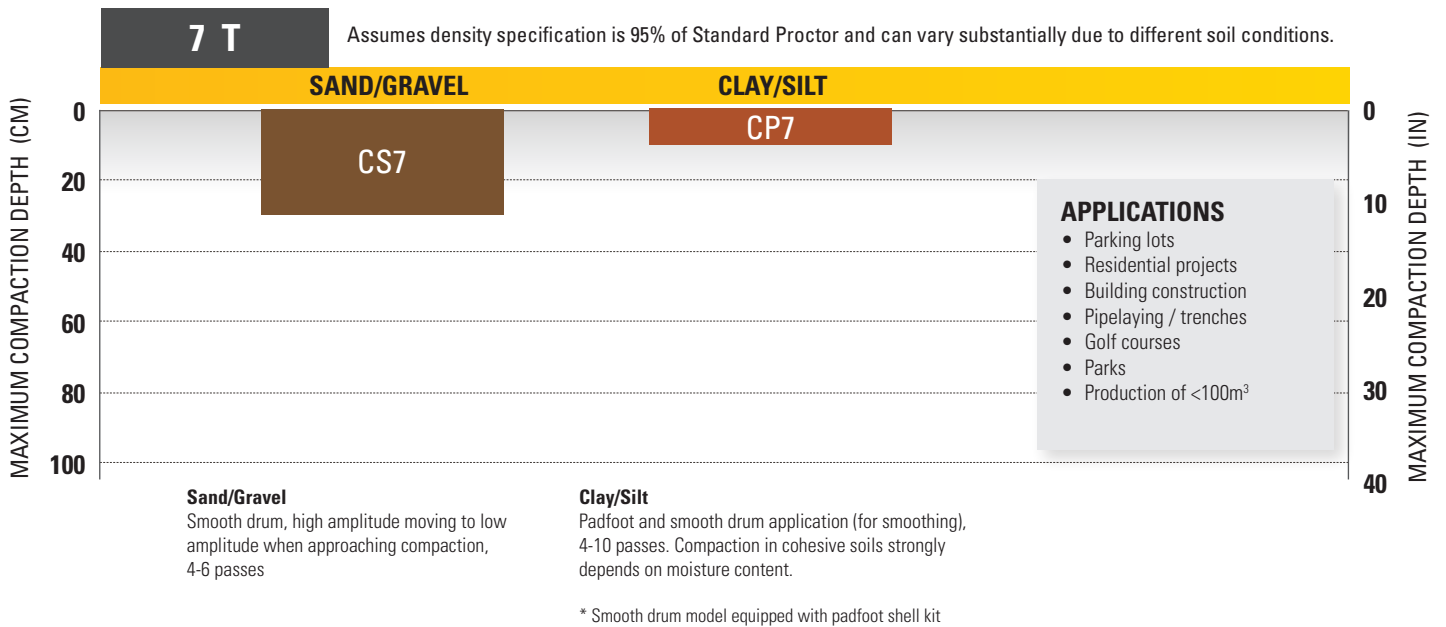
Standard and Optional Equipment

Standard and optional equipment may vary. Consult your Cat dealer for details.

	Standard	Optional		Standard	Optional
OPERATOR ENVIRONMENT			POWERTRAIN		
ROPS/FOPS Canopy with Handrails, Floor Mat, Interior Rear View Mirror	✓		Cat® C4.4B Engine	✓	
Vinyl Adjustable Seat with Integrated Console and LCD Display with Lockable Vandalism Guard	✓		Air Cleaner, Dual Element	✓	
Adjustable Tilting Steering Column with Integrated Cup Holders	✓		Two-Speed Throttle Switch and Eco-mode	✓	
Rear Vision Camera System with Color Touchscreen Display	✓		Dual Propel Pumps; One for Drum Drive, One for Rear Axle	✓	
Seat Belt	✓		Fuel Filter, Water Separator, Priming Pump, Water Indicator	✓	
12-volt Power Outlet	✓		Tilting Radiator/Hydraulic Oil Cooler	✓	
Horn, Backup Alarm	✓		Dual Braking System	✓	
ROPS/FOPS Cab with Climate Control, Cloth Seat, Exterior Rear View Mirrors, Sun Visor, Roll-down Sun Screen		✓	Two-Speed Hydrostatic Transmission	✓	
VIBRATORY SYSTEM			Transmission Guard		✓
Padfoot Drum	✓		ELECTRICAL		
Dual Amplitude, Single Frequency	✓		12-volt Electrical System	✓	
Pod-Style Eccentric Weight Housings	✓		150 ampere Alternator	✓	
Auto-vibe Function	✓		1000 Cold-cranking Amps Battery Capacity	✓	
Dual Adjustable Steel Scrapers	✓		OTHER		
Leveling Blade		✓	Product Link™	✓	
Variable Frequency		✓	Sight Gauges for Hydraulic Oil Level and Radiator Coolant Level	✓	
			S•O•S SM Sampling Valves: Engine Oil, Hydraulic Oil, and Coolant	✓	
			Upgraded Halogen Light Package		✓
			Amber Rotating Beacon		✓
			Factory Filled Bio-Hydraulic Oil		✓

Cat® CP7 Padfoot Drum Vibratory Soil Compactor

Vibratory Soil Compactor Selection Guide



Not all models are available in each region. Contact your Cat® dealer representative for more information.

Cat® CP7 Padfoot Drum Vibratory Soil Compactor

Technical Specifications

Engine - Powertrain		
Engine Model	Cat® C4.4B	
Emissions	Brazil MAR-1, equivalent to U.S. EPA Tier 3 and EU Stage IIIA emissions	
Engine Power ISO 14396:2002	74.5 kW	99.9 hp
Gross Power SAE J1995:2014	75.3 kW	101.0 hp
Net Power ISO 9249:2007*	70.5 kW	94.5 hp
Net Power SAE J1349:2011*	69.7 kW	93.5 hp
Displacement	4.4 L	269 in ³
Stroke	127 mm	5.0 in
Bore	105 mm	4.1 in
Max. Travel Speed (Forward or Reverse)	11.4 km/h	7.0 mph
Theoretical Gradeability**	57%	

Vibratory System Specifications		
Frequency		
Standard	31.9 Hz	1914 vpm
During Eco-mode Operation	29 Hz	1744 vpm
Optional Variable Frequency	23.3 - 31.9 Hz	1400 - 1914 vpm
Nominal Amplitude @ 31.9 Hz (1914 vpm)		
High	1.59 mm	0.063 in
Low	0.80 mm	0.031 in
Centrifugal Force @ 31.9 Hz (1914 vpm)		
Maximum	133 kN	29,900 lb
Minimum	67 kN	15,000 lb

Weights***		
Operating Weight w/ ROPS/FOPS Canopy	7228 kg	15,935 lb
w/ Leveling Blade	7694 kg	16,962 lb
Operating Weight w/ ROPS/FOPS Cab	7471 kg	16,471 lb
w/ Leveling Blade	7976 kg	17,584 lb
Weight at Drum w/ ROPS/FOPS Canopy	3601 kg	7939 lb
w/ Leveling Blade	4333 kg	9553 lb
Weight at Drum w/ ROPS/FOPS Cab	3711 kg	8181 lb
w/ Leveling Blade	4400 kg	9700 lb

Service Refill Capacities		
Fuel Tank, total capacity	140 L	37.0 gal
Cooling System	19.5 L	5.3 gal
Engine Oil w/ Filter	9.5 L	2.5 gal
Eccentric Weight Housing	13 L	3.5 gal
Axle and Final Drives	14.6 L	3.9 gal
Hydraulic Tank (service refill)	26 L	6.9 gal

* Net power advertised is the power available at the engine flywheel when equipped with a fan at maximum speed, air cleaner, clean emissions module, and alternator.

** Actual gradeability may vary based on site conditions and machine configuration. Refer to the Operation and Maintenance Manual for more information.

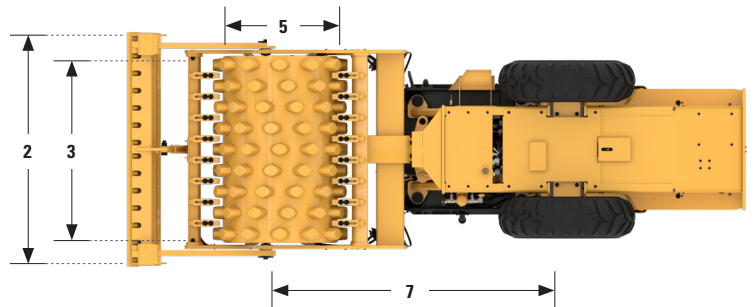
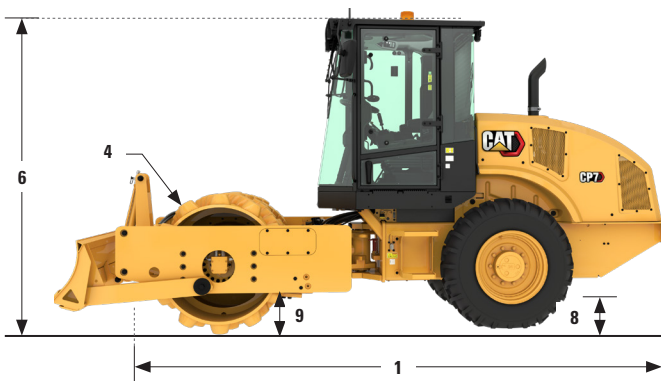
*** Standard operating weight considers full fuel tank, 75 kg operator, traction tires and oval pad drum.

Cat® CP7 Padfoot Drum Vibratory Soil Compactor

Technical Specifications

Dimensions			
1	Overall Length	5.1 m	16.7 ft
	Overall Length w/ optional Leveling Blade	5.6 m	18.4 ft
2	Overall Width	1.8 m	5.9 ft
	Overall Width w/ optional Leveling Blade	2.1 m	6.9 ft
3	Drum Width	1676 mm	66 in
4	Drum Shell Thickness	25 mm	1 in
5	Drum Diameter		
	Over Oval Pads	1225 mm	48.2 in
	Over Square Pads	1207 mm	47.5 in
6	Overall Height		
	w/ ROPS/FOPS Canopy	2.8 m	9.2 ft
	w/ ROPS/FOPS Cab	2.9 m	9.5 ft
7	Wheelbase	2.6 m	8.5 ft
8	Ground Clearance	411 mm	16.2 in
9	Curb Clearance	369 mm	14.5 in
	Inside Turning Radius	3.1 m	10.2 ft
	Hitch Articulation Angle	37°	
	Hitch Oscillation Angle	15°	

Padfoot Specifications			
Number of Pads		108	
Pad Height, Oval		86.8 mm	3.4 in
Pad Face Area, Oval		63.8 cm ²	9.9 in
Pad Height, Optional Square Pads		79.4 mm	3.1 in
Pad Face Area, Optional Square Pads		95.5 cm ²	14.8 in
Number of Chevrons		12	



Cat® CP7 Padfoot Drum Vibratory Soil Compactor

Environmental Declaration

The following information applies to the machine at the time of final manufacture as configured for sale in the regions covered in this document. The content of this declaration is valid as of the date issued; however, content related to machine features and specifications are subject to change without notice. For additional information, please see the machine's Operation and Maintenance Manual.

For more information on sustainability in action and our progress, please visit www.caterpillar.com/en/company/sustainability.html.

ENGINE

- The Cat C4.4 is available in configurations that meet Brazil MAR-1, equivalent to Tier 3 emissions.
- Cat diesel engines are required to use ULSD (ultra-low sulfur diesel fuel with 15 ppm of sulfur or less) or ULSD blended with the following lower-carbon intensity fuels* up to:
 - ✓ 20% biodiesel FAME (fatty acid methyl ester)
 - ✓ 100% renewable diesel, HVO (hydrotreated vegetable oil) and GTL (gas-to-liquid) fuels

Refer to guidelines for successful application. Please consult your Cat dealer or "Caterpillar Machine Fluids Recommendations" (SEBU6250) for details.

* Tailpipe greenhouse gas emissions from lower-carbon intensity fuels are essentially the same as traditional fuels.

AIR CONDITIONING SYSTEM

The air conditioning system on this machine contains the fluorinated greenhouse gas refrigerant R134a (Global Warming Potential = 1430). The system contains 0.9 kg (1.98 lb) of refrigerant, which has a CO₂ equivalent of 1.287 metric tonnes (1.418 tons).

PAINT

- Based on best available knowledge, the maximum allowable concentration, measured in parts per million (PPM), of the following heavy metals in paint are:
 - Barium < 0.01%
 - Cadmium < 0.01%
 - Chromium < 0.01%
 - Lead < 0.01%

SOUND PERFORMANCE

With cooling fan speed at maximum value:

Exterior Sound Power Level (ISO 6395:2008) – 107 dB(A)

With cooling fan speed at 70% of maximum value:

Operator Sound Pressure Level (ISO 6396:2008) – 79 dB(A)

- When properly installed and maintained, the cab offered by Caterpillar, when tested with doors and windows closed according to ANSI/SAE J1166 OCT98, meets OSHA and MSHA requirements for operator sound exposure limits in effect at time of manufacture.
- Hearing protection may be needed when operating with an open operator station and cab (when not properly maintained or doors/windows open) for extended periods or in a noisy environment.

OILS AND FLUIDS

- Caterpillar factory fills with ethylene glycol coolants. Cat Diesel Engine Antifreeze/Coolant (DEAC) and Cat Extended Life Coolant (ELC) can be recycled. Consult your Cat dealer for more information.
- Cat BIO HYDO™ Advanced is an EU Ecolabel approved biodegradable hydraulic oil.
- Additional fluids are likely to be present, please consult the Operations and Maintenance Manual or the Application and Installation guide for complete fluid recommendations and maintenance intervals.

FEATURES AND TECHNOLOGY

- The following features and technology may contribute to fuel savings and/or carbon reduction. Features may vary. Consult your Cat dealer for details.
 - Standard eco-mode limits engine RPM, lowering overall fuel consumption compared to high idle
 - Extended maintenance intervals reduce fluid and filter consumption

Cat® CP7 Padfoot Drum Vibratory Soil Compactor



For more information on Cat products, dealer services, and industry solutions visit us on the web at www.cat.com.

© 2023 Caterpillar
All rights reserved.

Materials and specifications are subject to change without notice. Featured machines in photos may include additional equipment. See your Cat dealer for available options.

CAT, CATERPILLAR, LET'S DO THE WORK, their respective logos, "Caterpillar Corporate Yellow," the "Power Edge" and Cat "Modern Hex" trade dress as well as corporate and product identity used herein, are trademarks of Caterpillar and may not be used without permission.

QEHQ3073 (04-2023)
Build Number 03A
(AME, ANZ, China, Eurasia, S Am)

