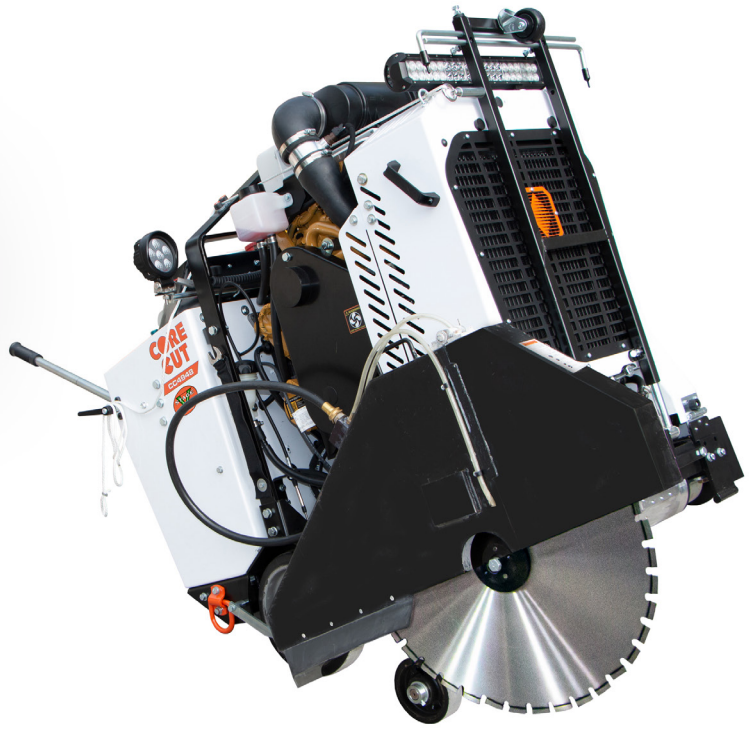


BIG JOBS NEED BIG DIAMONDS



CUSTOMER:

Diamond Products

PRODUCT:

CC4948DCV Walk-Behind Saw

LOCATION:

Elyria, Ohio

SCOPE OF ENGINE USE:

Cat® C1.7 EU Stage V

CAT® DEALER:

Ohio Cat

www.ohiocat.com

WEBSITE:

www.diamondproducts.com/



FEATURED TOPIC:

Cat® C1.7

Following the creation of lab-grown diamonds, it did not take long for other industries to start utilizing them for their strength rather than their beauty. Why put the hardest substance on Earth on a finger when it could be used to cut concrete?

One of the first companies to start using diamonds in the construction industry was Pennsylvania Drilling, which would eventually change its name to Diamond Products® in 1964, when it began manufacturing diamond core bits and drilling machines. Now, Diamond Products has secured its place as one of the top diamond-tipped tool manufacturers in North America, working to provide equipment to highway contractors, professional concrete cutters, construction firms, demolition companies and others.

The CC4948DC is a rear pivot walk-behind saw. It has the differential located in the rear of the saw, making it much easier for some operators to maneuver. It has the same 14- to 42-inch blade capacity as the CC5048DC walk-behind saw, making it great for cutting expansion joints and for any job on roads and highways. If you need to rip out concrete or cut into tough materials, this is the one.

What sets the CC4948DC apart from its competitors is the fact there is nothing else like it. Diamond Products is the only U.S. based company with a rear pivot walk-behind saw powered by a diesel engine in the North American market. Today, there is a regional preference for rear pivot saws in the Southeastern U.S. and on the West Coast.

A FLAWLESS SOLUTION

Most walk-behind saw manufacturers switched from gas to diesel power more than a decade ago, seeking better performance and durability in demanding applications. Diesel engines have better torque than gas engines and are much less likely to overheat and cause injury to the operator. The walk-behind saw uses the same fuel as other machines commonly found on a jobsite, which is very convenient.

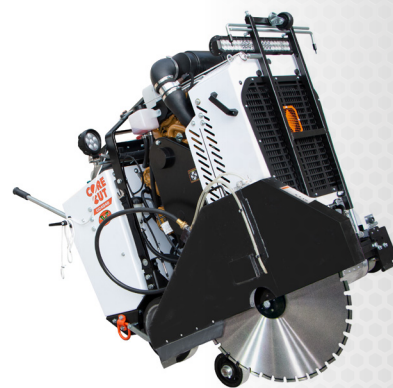
Downtime is money. Choosing the right engine for the new CC4948DC came down to two things: quality and reliability. Diamond Products built its legacy producing saws that worked when they are needed, even if it wasn't planned.

More power in a small package. Working with its local Cat dealer, Ohio Cat, Diamond Products chose the C1.7 EU Stage V engine for its newest saw. Reaching a maximum 48 horsepower, "It delivers a lot of power in a small package. That's important because our customers don't have a lot of space to maneuver in," says Keith Ripley, vice president of sales and marketing for Diamond Products.

Starting out sustainable. The C1.7 engine that powers the CC4849DC saw meets the Stage V emissions standards set by the European Union. This was an important consideration when Diamond Products chose an engine, due to ever-increasing emissions standards.

Form a deeper connection with your fleet. Get insights on machine and fleet data directly from any phone or computer. Outfitted for compatibility with both my.cat.com and Caterpillar Remote Fleet Vision (RFV) interfaces, it has never been easier to perform scheduled maintenance on any fleet.

Cat quality service. With more than 50 years of diamond-tipped tool production under its belt, Diamond Products turned to Ohio Cat to help outfit its new saw with the best quality Cat industrial engine. "With Cat dealers everywhere, Cat service is second to none. We are so excited to be able to tell people this saw comes with Cat service," Ripley says.



"It delivers a lot of power in a small package. That's important because our customers don't have a lot of space to maneuver in."



LET'S DO THE WORK.™

© 2023 Caterpillar. All Rights Reserved. CAT, CATERPILLAR, LET'S DO THE WORK, their respective logos, "Caterpillar Corporate Yellow," the "Power Edge" and Cat "Modern Hex" trade dress, as well as corporate and product identity used herein, are trademarks of Caterpillar and may not be used without permission.

