

OUR PRESENCE IN:

MASSACHUSETTS



Full-time Employees:

20

Suppliers:

75

Dealers:

Milton Cat

Caterpillar Foundation
Contribution¹:

\$34,000

Nonprofits Supported:

50

All totals are approximate.

ABOUT CATERPILLAR

For nearly 100 years, we've been helping customers build a better, more sustainable world and are committed and contributing to a reduced-carbon future. Our innovative products and services, backed by our global dealer network, provide exceptional value that helps customers succeed.



4M+

Cat[®] Products at Work
Around the World*

*Includes discontinued products.



109,100

Global Full-Time
Employees



2022 Sales
and Revenues

\$59.4B

PRODUCT LINE

Caterpillar Inc. is
the world's leading
manufacturer of:



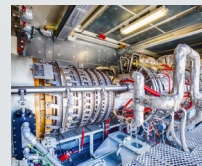
Construction
Equipment



Mining
Equipment



Off-highway Diesel
& Natural Gas Engines



Industrial Gas
Turbines



Diesel-Electric
Locomotives

Based on year-end 2022. All numbers are approximate.
¹ Including Caterpillar Matching Gifts Programs

WE HELP OUR CUSTOMERS **BUILD A BETTER, MORE SUSTAINABLE WORLD.**

© 2023 Caterpillar. All Rights Reserved. CAT, CATERPILLAR, LET'S DO THE WORK, their respective logos, "Caterpillar Corporate Yellow", the "Power Edge" and Cat "Modern Hex" trade dress as well as corporate and product identity used herein, are trademarks of Caterpillar and may not be used without permission.

CATERPILLAR[®]