

OUR PRESENCE IN:

# WASHINGTON, D.C.

Full-time Employees:

**10**

Suppliers:

**<10**

Dealers:

**Carter Machinery Company**

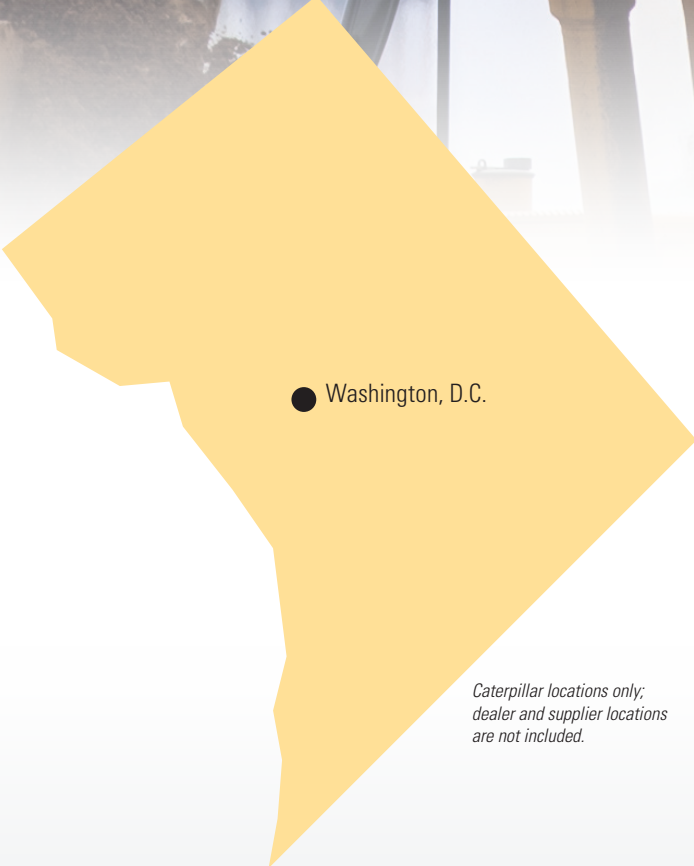
Caterpillar Foundation Contribution<sup>1</sup>:

**\$137,000**

Nonprofits Supported:

**70**

*All totals are approximate.*



● Washington, D.C.

*Caterpillar locations only; dealer and supplier locations are not included.*

## ABOUT CATERPILLAR

For nearly 100 years, we've been helping customers build a better, more sustainable world and are committed and contributing to a reduced-carbon future. Our innovative products and services, backed by our global dealer network, provide exceptional value that helps customers succeed.



**4M+**

Cat<sup>®</sup> Products at Work Around the World\*

\*Includes discontinued products.



**109,100**

Global Full-Time Employees



2022 Sales and Revenues

**\$59.4B**

## PRODUCT LINE

Caterpillar Inc. is the world's leading manufacturer of:



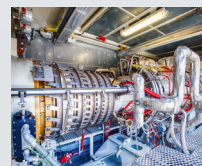
Construction Equipment



Mining Equipment



Off-highway Diesel & Natural Gas Engines



Industrial Gas Turbines



Diesel-Electric Locomotives

Based on year-end 2022. All numbers are approximate.

<sup>1</sup> Including Caterpillar Matching Gifts Programs

WE HELP OUR CUSTOMERS **BUILD A BETTER, MORE SUSTAINABLE WORLD.**

© 2023 Caterpillar. All Rights Reserved. CAT, CATERPILLAR, LET'S DO THE WORK, their respective logos, "Caterpillar Corporate Yellow", the "Power Edge" and Cat "Modern Hex" trade dress as well as corporate and product identity used herein, are trademarks of Caterpillar and may not be used without permission.

