

OUR PRESENCE IN:  
**FLORIDA**



Full-time Employees:  
**580**

Suppliers:  
**75**

Dealers:  
**Kelly Tractor Co.**  
**Ring Power Corporation**  
**Thompson Tractor**

Caterpillar Foundation  
Contribution<sup>1</sup>:  
**\$479,000**

Nonprofits Supported:  
**125**

*All totals are approximate.*



**ABOUT CATERPILLAR**

For nearly 100 years, we've been helping customers build a better, more sustainable world and are committed and contributing to a reduced-carbon future. Our innovative products and services, backed by our global dealer network, provide exceptional value that helps customers succeed.



**4M+**  
Cat® Products at Work  
Around the World\*

\*Includes discontinued products.



**109,100**  
Global Full-Time  
Employees



2022 Sales  
and Revenues  
**\$59.4B**

**PRODUCT LINE**

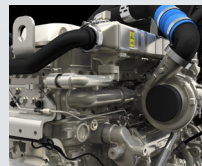
Caterpillar Inc. is the world's leading manufacturer of:



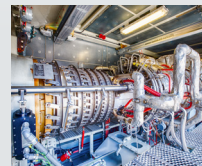
Construction  
Equipment



Mining  
Equipment



Off-highway Diesel  
& Natural Gas Engines



Industrial Gas  
Turbines



Diesel-Electric  
Locomotives

Based on year-end 2022. All numbers are approximate.  
<sup>1</sup> Including Caterpillar Matching Gifts Programs

WE HELP OUR CUSTOMERS **BUILD A BETTER, MORE SUSTAINABLE WORLD.**

© 2023 Caterpillar. All Rights Reserved. CAT, CATERPILLAR, LET'S DO THE WORK, their respective logos, "Caterpillar Corporate Yellow", the "Power Edge" and Cat "Modern Hex" trade dress as well as corporate and product identity used herein, are trademarks of Caterpillar and may not be used without permission.

