

# D4

## TRACK-TYPE TRACTOR



---

**Net Power (2,100 rpm)**  
ISO 9249/SAE J1349  
ISO 9249 (DIN)

97 kW (130 hp)  
132 mhp

**Operating Weight**

D4 13 272 kg (29,259 lb)  
D4 LGP 14 008 kg (30,882 lb)

Cat® C4.4 Engine meets U.S. EPA Tier 4 Final/EU Stage V/Japan 2014/Korea Stage V emission standards.



# THE CAT<sup>®</sup> D4

SEE A BETTER BOTTOM LINE

The versatile Cat<sup>®</sup> D4 Dozer offers the power and precision to get jobs done quickly, plus gives you up to 30 percent more visibility in front of the blade. Easy-to-use technology features help you get more quality work done in less time. Fuel efficiency and service improvements help reduce your operating costs.



*Comparisons to previous model D4/D6K2.*

## TECHNOLOGY FEATURES TO FIT YOUR BUSINESS

Your dozer is technology-ready so you can order technology packages from the factory or easily upgrade later as your work demands it.

- + The package of Assist features is now STANDARD, giving you technology like Cat Grade with Slope Assist™ and Steer Assist to help operators of varied skill levels get the job done faster and more easily.
- + Grade 3D with Assist package gives you all of the Assist features, plus 3D Grade and Steer Assist 3D. Get to design plan faster and with less operator effort so you can save time, money, and fuel.
- + Cat Equipment Management telematics technology helps take the complexity out of managing your jobsites.

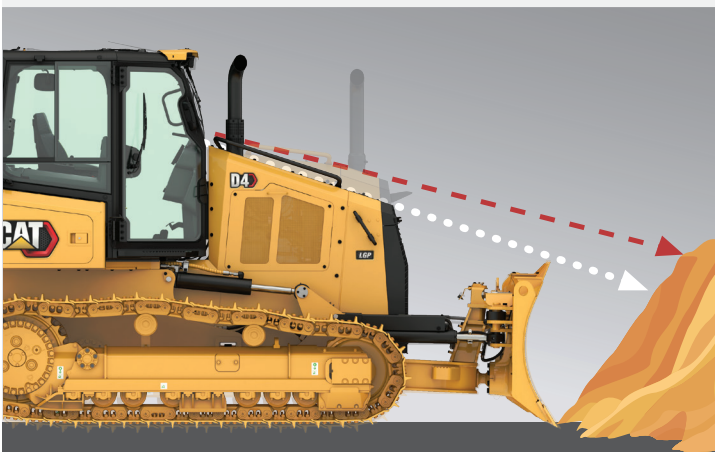


## A BETTER VIEW

Lower sloping hood line = **about 30% better visibility** to the work area in front of the blade.

## UP TO 30% BETTER FORWARD VISIBILITY

Work more efficiently – lower sloping hood line for better visibility to the area in front of the blade.



SHORTER SIGHT LINE GETS YOU ABOUT **40% CLOSER TO THE PILE** FOR FASTER CYCLE TIMES.

## UP TO 50% MORE PRODUCTIVITY WITH CAT TECHNOLOGY

A broad range of Assist and Grade technology choices helps boost productivity, so you get the most from your machine. The Assist package is now STANDARD.

## LOWER OPERATING COSTS

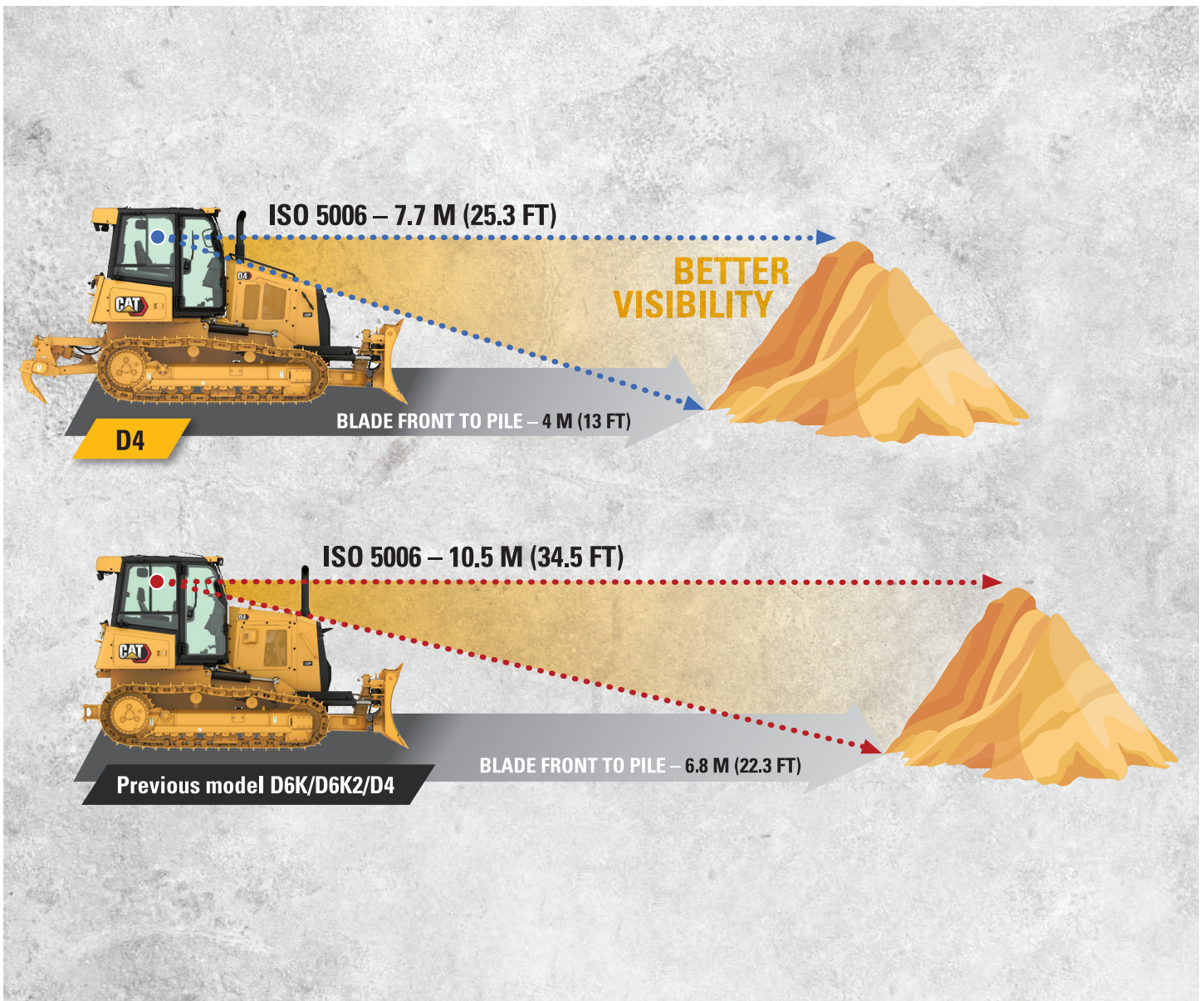
Lower maintenance costs, longer service intervals help you save time and money.

**D4** .....▶  
PREVIOUS MODEL D6K/D6K2/D4 - - - - -▶

*Comparisons to previous model D4/D6K2.*

# BETTER SIGHT LINES ENJOY THE VIEW

Get a better view of the work at hand with a lower sloping hood line that gives you up to 30 percent better visibility to the area in front of the blade.



## WORK FASTER

Shorter sight lines mean you won't have to back up as much to get a full view of the material. With the visual distance between the front of your blade and the pile shortened by about 40 percent, you'll spend less time in reverse and get the job done faster.

## POWERFUL

Cat C4.4 engine with twin turbochargers combined with a hydrostatic transmission gives you excellent fuel efficiency and the most power-dense drive train in its size class.

## AGILE

Superior maneuverability and fast steering response give you the agility to get the job done quickly. Power Turn provides power to each track to allow dozer to carry heavy loads around turns.



## VERSATILE

Variable Pitch Angle Tilt (VPAT) blade gives you the width and capacity to move material, as well as the finesse you need for smooth finish grades. Foldable VPAT option available for narrower transport width.

## BALANCED

The undercarriage design, with eight bottom rollers and two carrier rollers, is optimized for smooth finish grading and a better ride, even at faster grading speeds.

# OPERATOR HELPERS

## BUILT RIGHT IN

STANDARD Assist technology features help make work easier, especially for less experienced operators. Some blade and steering functions are automated so newer operators can work at productivity levels closer to their veteran counterparts. Seasoned operators can enjoy reduced effort, along with faster, more accurate results. Standard ARO with Assist bundles these features into one productivity-boosting package.



### NO GPS SIGNAL? NO PROBLEM

**Cat Grade with Slope Assist** automatically maintains pre-established blade position without a GNSS/GPS signal – no additional hardware or software needed. For machines with 3D, operators can easily switch back and forth from full 3D automatics to Slope Assist.

### SMOOTH OPERATOR

**Stable Blade** works seamlessly with operator inputs to help produce a smoother surface when operating manually.

### STAY ON TRACK

**Steer Assist** automates track and blade tilt steering. Helps reduce operator fatigue by automatically maintaining straight travel with light loads or heavy loads on flat ground and side slopes. Helps reduce steering inputs up to 75%. No GNSS/GPS required.

*Steer Assist available early 2024.*

### EASY UPGRADES

**Attachment Ready Option (ARO)** provides wiring and mounting provisions for dealer installation of Grade with 3D, Accugrade, UTS, or other grade control systems.

### KEEP PUSHING FORWARD

These Assist features help you make the most of every pass.

**Blade Load Monitor** gives you real-time feedback on current load versus the optimal blade load based on your ground conditions. Actively monitors machine load and track slip to help you reach optimal pushing capacity.\*

**Traction Control** automatically reduces track slip to save you time, fuel and track wear.\*

**AutoCarry** automates blade lift to help you maintain consistent blade load and reduce track slip.\*

**Slope Indicate** is included in the main machine display and shows side slope and uphill/downhill grades to help operators with slope work.

*\*Feature not operational indoors or in areas where a GNSS/GPS signal is not available.*

PROVEN ADVANTAGE

WORK HARDER

EASIER

Cat Assist and Grade technologies work in the background to help dozer operators of varied skill levels and are especially beneficial to less experienced operators. To demonstrate just how much these built-in technology features help, Caterpillar put them to the test. Two novice operators and two expert operators took on three challenges. Each operator completed three runs of each task – one in manual, one using Assist technology features, and one using Assist plus Cat Grade with 3D. The team measured productivity<sup>1</sup>, efficiency<sup>2</sup>, completion time, final surface quality and operator inputs.

## SLOT DOZING

**Productivity and efficiency** – novice operators went from 9% lower productivity and efficiency than the experts in manual to matching the experts when using Assist.

## TRUCK DUMP SPREADING/ GRADING IN SAND

**Completion time** – novice operators took 49% more time than the experts in manual and narrowed the gap to 17% using Assist and to 9% by adding Grade.

**Blade inputs** – novice operator blade inputs were reduced 45% with Assist, and 55% with Assist plus Grade. Expert operator blade inputs were reduced 32% with Assist, and 53% with Assist plus Grade.

**Surface quality** – novice operator surface quality improved up to 51% using technology while expert operator surface quality improved up to 27% using technology. Novice operators using technology produced similar surface quality to the expert operators in manual.

## SIDE SLOPE/STEER ASSIST

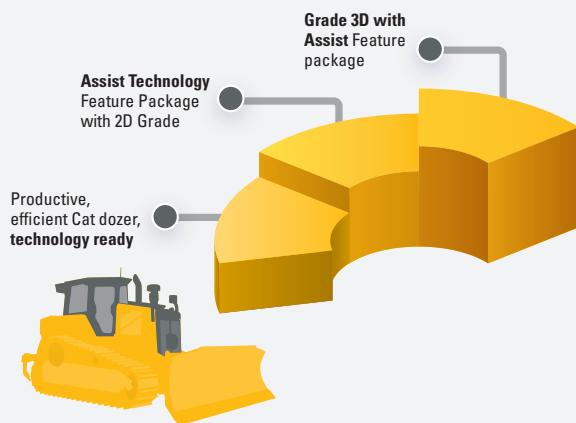
**Steering inputs** – novice and expert operator steering inputs reduced by 75% in forward and by 67% combining forward and reverse.

<sup>1</sup> Material moved per hour

<sup>2</sup> Material moved per unit of fuel/diesel exhaust fluid (DEF)  
Study conducted by Caterpillar, August 2022

## LEVEL UP

CHOOSE THE RIGHT LEVEL OF TECHNOLOGY TO FIT YOUR BUSINESS AND BUDGET. ORDER FROM THE FACTORY OR UPGRADE LATER.



TECHNOLOGY PACKAGES THAT HELP BOOST  
TIME / MONEY / FUEL SAVINGS



## 3D GRADE CONTROL BOOST YOUR PRODUCTIVITY

- + Factory integrated **Cat Grade with 3D** uses GNSS/GPS to control the blade so you can get to design the plan faster.
- + Cat Grade with 3D has no masts - low profile antennas are integrated into the cab roof and GNSS/GPS receivers are mounted inside the cab for better protection.
- + Automatically follow guidance lines from design plans with **Steer Assist 3D**. Stay on curb lines, centerlines, bottom of slope, etc., without operator effort. Track steering is used under light loads and blade tilt steering may be added under heavy loads.
- + Grade operator interface is intuitive and easy to use: 10-inch (254 mm) touchscreen, Android OS platform, operates like a smart phone.
- + Cab is Third-party Grade Control ready, equipped with CAN interface, harness pass throughs and mounting features to make it easier to install the grade control system of your choice.
- + All Cat Grade systems are compatible with radios and base stations from Trimble, Topcon, and Leica.
- + Already invested in a grade infrastructure? You can install grade systems from Trimble, Topcon, and Leica onto the machine.

*Steer Assist 3D available early 2024.*

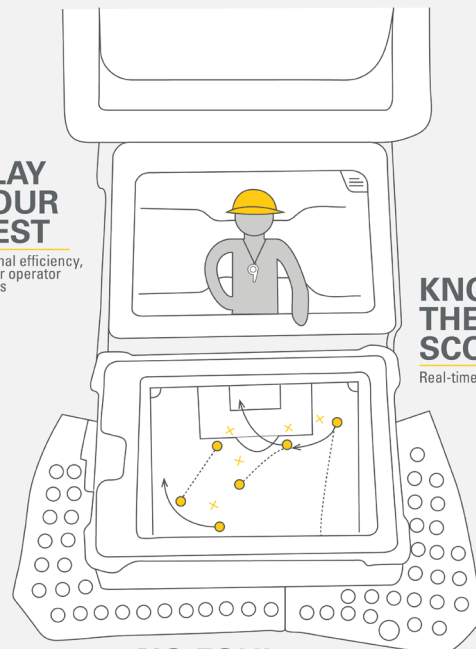
### CAT® TECHNOLOGY IS LIKE HAVING A **COACH IN THE CAB**

#### PLAY YOUR BEST

Optimal efficiency,  
fewer operator  
inputs

#### KNOW THE SCORE

Real-time Feedback



#### NO FOUL

Save rework, time, materials



# CAT EQUIPMENT MANAGEMENT TECHNOLOGY TAKES THE GUESSWORK OUT OF MANAGING YOUR EQUIPMENT

**Cat Equipment Management** telematics technology helps take the complexity out of managing your jobsites – by gathering data generated by your equipment, materials and people – and serving it up to you in customizable formats.



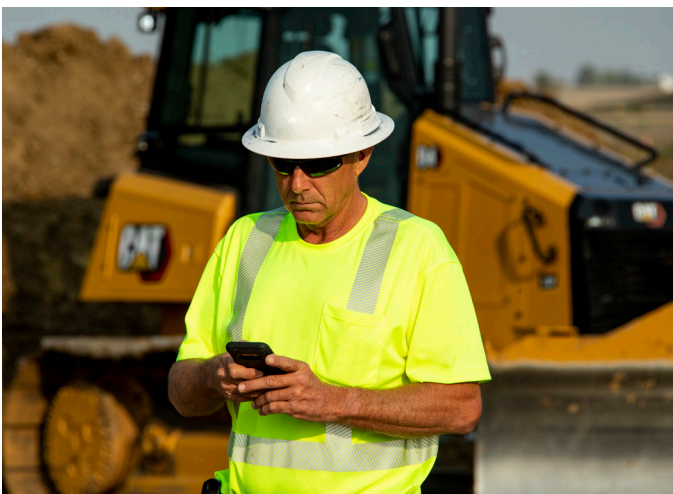
## **CAT PRODUCT LINK™**

Product Link™ collects data automatically and accurately from your assets – any type and any brand. Information such as location, hours, fuel usage, productivity, idle time, maintenance alerts, diagnostic codes and machine health can be viewed online through web and mobile applications.



## **VISIONLINK®**

Access information anytime, anywhere with VisionLink® – and use it to make informed decisions that boost productivity, lower costs, simplify maintenance and improve safety and security on your jobsite. With different subscription level options, your Cat dealer can help you configure exactly what you need to connect your fleet and manage your business without paying for extras you don't want. Subscriptions are available with cellular or satellite reporting or both.



## **REMOTE SERVICES**

The Cat App helps you manage your assets – at any time – right from your smartphone. See fleet location and hours, get critical required maintenance alerts and even request service from your local Cat dealer.

- + **Remote Flash** – get software updates to one or more machines remotely.
- + **Remote Grade** lets you wirelessly manage site plans via Trimble Connect Services.
- + **Operator ID** lets you track machine operation by individual operator using the main display and Product Link.

# COME ON IN AND MAKE YOURSELF COMFORTABLE

The latest cab offers more comfort and convenience for long days in the seat. Pair that with added visibility along the lower sloping hood line, and you have an operator environment that helps you get the job done.



## STAY IN TOUCH

10-inch (254 mm) touchscreen main display is easy to use with a great view of machine settings and features. The standard high-definition rearview camera shows prominently in the display and includes backup lines to guide you.

## WORK SPACE

More comfortable seat offers improved suspension and multiple adjustments for personalized comfort. Plus, enjoy additional storage spaces throughout the cab.

## REDUCED EFFORT

Bi-directional control lets you preselect forward/reverse gears for reduced effort and to match your application. Save the settings as operator profile for even more convenience.

*Comparisons to previous model D4/D6K2.*



# EQUIPPED FOR THE JOB

## FIT THE WAY YOU WORK

Choose from undercarriage, track shoe, guarding and attachment options to ideally outfit your dozer for the type of work you do.

### HEAVY DUTY/FORESTRY

You can equip your D4 with a variety of factory options to provide added protection in heavy-duty applications like forestry and land clearing. Choose individual components, sweeps/screens, protection packages and even a heavy-duty cab with polycarbonate windows.



SAVE TIME, SAVE MONEY

# BECAUSE UPTIME COUNTS

## EASY SERVICE ACCESS

Large engine compartment door gives you easy ground-level access to service and maintenance points. The lower panel can be removed without tools. The trunnion grease point can now be reached without bending down. Longer drawbar platform gives you more convenient fuel fill/rear camera cleaning access. Optional ground level fast fuel fill and shovel bracket add to overall convenience.

## OPERATING COST SAVERS

Eco modes optimize engine speed, while maintaining ground speed and power, to save you fuel in lighter blade load applications like finish grading. Efficiency features reduce engine speed when idling, or shut the machine down after a specified time, to further save fuel and meet idling regulations. Efficient cooling package has better air flow, helping to reduce fan speed and save even more fuel in cooler conditions/lighter applications.

## TAKE ON ABRASIVE CONDITIONS

Cat Abrasion™ undercarriage is your lowest cost-per-hour solution for high abrasion and low impact jobsites. The design offers double the seal life and eliminates bushing turns, reducing your costs up to 50% per hour compared to traditional undercarriage.

## PRECISION CUTTING EDGES

Protect your blade investment with 20% more wear material and lower cost per hour, plus 40% more wear material on extended wear life edges.\*\* Cat Precision Cutting Edges are the only ones with wear indicators rolled right into the edge material, to ensure you know when to flip your cutting edges to avoid costly blade repairs.

\*\*Compared to legacy cutting edges (Available early 2024.)

## SPEND LESS ON MAINTENANCE

Engine oil/engine oil filter service interval has been extended to 1,000 hours.\* Longer service intervals on the air cleaner and Diesel Exhaust Fluid (DEF) pump filter help save time, too. LED lights offer up to six times the life of halogen to save on parts cost.

\*First change at 500 hours. Scheduled Oil Sampling (S-O-S<sup>SM</sup>) required. Please refer to Operation and Maintenance Manual (OMM) for details.



Comparisons to previous model D4/D6K2.

# MORE THAN MACHINES

BUILT AROUND YOUR SUCCESS

When you buy Cat equipment, you get so much more than the machine. You also get the support of a best-in-class dealer network, backed by a range of flexible solutions, technology, tools and more.



## CUSTOMER VALUE AGREEMENTS

A Customer Value Agreement (CVA) from your Cat dealer helps you do more and worry less. A CVA simplifies machine ownership and maintenance, adds the security of expert dealer support and gives you the peace of mind from effective equipment health management.

## REPAIR OPTIONS

A broad range of repair options give you choices that work with your needs, budget and timeline. Every repair is performed by expert Cat technicians. You'll receive smart repair advice, a timely, accurate quote and service that gets your machine back into action quickly.

## GENUINE CAT PARTS

Genuine Cat Parts deliver the highest level of reliability and productivity. Order direct from your Cat dealer or shop online at [parts.cat.com](http://parts.cat.com).

## FINANCIAL SERVICES

Count on Cat Financial to provide the best finance and extended protection solutions for your business. For more than 30 years, we have helped our customers succeed through financial service excellence.

## GET BACK TO WORK

Services to help you save time, save money and get back on the job.

### CAT INSPECT

Access your equipment data on your mobile device. This easy-to-use app lets you capture inspection data and integrates with your other Cat data systems, so you can keep a close eye on your fleet.

### HYDRAULICS AND HOSE

Whether you choose new, Reman, exchange or rebuilt hydraulic components, you'll get expert diagnostics, testing and contamination control. Cat Hose Service offers hoses and couplings for most makes and models.

### CERTIFIED REBUILD

Get a full second machine life at a fraction of the cost of buying new. With upgraded features, safety enhancements and the latest technologies, your old machine will perform even better than it did when it rolled off the line.

# TECHNICAL SPECIFICATIONS

See [cat.com](http://cat.com) for complete specifications.

ENGINE		
Engine Model	Cat® C4.4	
Emissions	U.S. EPA Tier 4 Final/EU Stage V/Japan 2014/Korea Stage V	
Transmission Type	Hydrostatic	
<b>Net Power (2,100 rpm)</b>		
ISO 9249/SAE J1349	97 kW	130 hp
ISO 9249 (DIN)	132 mhp	
Displacement	4.4 L	268.5 in <sup>3</sup>

- Net power available at the flywheel when the engine is equipped with fan, air cleaner, aftertreatment, and alternator with engine speed at 2,100 rpm.
- Advertised power is tested per the specified standard in effect at the time of manufacture.
- Cat diesel engines are required to use ULSD (ultra-low sulfur diesel fuel with 15 ppm of sulfur or less) or ULSD blended with the following lower-carbon intensity fuels\*\* up to:
  - 20% biodiesel FAME (fatty acid methyl ester)\*
  - 100% renewable diesel, HVO (hydrotreated vegetable oil) and GTL (gas-to-liquid) fuels
 Refer to guidelines for successful application. Please consult your Cat dealer or “Caterpillar Machine Fluids Recommendations” (SEBU6250) for details.
- \* Engines with no aftertreatment devices can use higher blends, up to 100% biodiesel (for use of blends higher than 20% biodiesel, consult your Cat dealer).
- \*\* Lower-carbon intensity fuels do not significantly reduce GHGs at the tailpipe.

BUILD NUMBER	
Build Number	16B

OPERATING WEIGHT		
D4	13 272 kg	29,259 lb
D4 LGP	14 008 kg	30,882 lb

BLADES				
Blade Type	VPAT/Foldable VPAT			
	Capacity		Width	
VPAT	3.26 m <sup>3</sup>	4.26 yd <sup>3</sup>	3196 mm	10.5 in
LGP VPAT	3.81 m <sup>3</sup>	4.98 yd <sup>3</sup>	3682 mm	12.0 in

- VPAT foldable blades have the same capacity and width as the blades.

SERVICE REFILL CAPACITIES		
Fuel Tank	260 L	69 gal
Diesel Exhaust Fluid (DEF)	19 L	5 gal

AIR CONDITIONING SYSTEM
The air conditioning system on this machine contains the fluorinated greenhouse gas refrigerant R134a (Global Warming Potential = 1430). The system contains 1.6 kg of refrigerant which has a CO <sub>2</sub> equivalent of 2.288 metric tonnes.

DIMENSIONS				
	D4		D4 LGP	
Width of Tractor				
Standard Shoes without Blade	2330 mm	92 in	2760 mm	109 in
Standard Shoes with VPAT Blade Angled 25°	2896 mm	114 in	3337 mm	131 in
Standard Shoes with Foldable Blade in Transport Position	2364 mm	93 in	2850 mm	112 in
Machine Height from Tip of Grouser – ROPS Cab	2965 mm	117 in	2965 mm	117 in
Width of Standard Shoe	560 mm	22 in	760 mm	30 in
Length of Track on Ground	2653 mm	104 in	2653 mm	104 in
Length of Basic Tractor (with C-Frame and drawbar)	4618 mm	181 in	4618 mm	181 in
With the Following Attachments:				
VPAT Blade, Straight	5000 mm	196 in	5000 mm	196 in
VPAT Blade, Angled 25° (Standard and Foldable)	5630 mm	221 in	5630 mm	221 in
Ground Clearance from Ground Face of Shoe (per SAE J1234)	350 mm	14 in	350 mm	14 in
Ground Pressure (ISO 16754)	40.5 kPa	5.9 psi	31 kPa	4.5 psi

Note: all weights and dimensions with Cat Abrasion undercarriage.

# STANDARD & OPTIONAL EQUIPMENT

Standard and optional equipment may vary. Consult your Cat dealer for details.

POWER TRAIN	STANDARD	OPTIONAL
Cat C4.4 diesel engine	•	
Air cleaner with integrated precleaner, dust ejector and under hood air intake	•	
Auto engine speed control	•	
Electric fuel pump	•	
Hydrostatic, infinite variable speed transmission	•	
Precleaner with turbine		•
Auto reversing fan		•
OPERATOR ENVIRONMENT	STANDARD	OPTIONAL
Standard ROPS/FOPS cab	•	
Comfort cab package		•
Heavy duty cab package		•
Integrated air conditioning	•	
Air-suspension cloth seat	•	
Adjustable armrests	•	
10-in (254 mm) touchscreen display	•	
Rear-vision camera	•	
Electronically programmable speed selector	•	
Electronic engine air cleaner service indicator	•	
Entertainment radio ready	•	
Radio, AM/FM/AUX/USB Bluetooth®		•
CAT TECHNOLOGY	STANDARD	OPTIONAL
Slope Indicate	•	
<b>ARO with Assist Package</b>		
- ARO		
- Slope Assist		
- Steer Assist**	•	
- Stable Blade		
- Blade Load Monitor		
- Traction Control		
- AutoCarry		
<b>Grade 3D with Assist Package</b>		
- Full-color 10-inch (254 mm) touchscreen grade display		
- Steer Assist 3D**		•
- Grade receivers and antennas		
- Grade Software Enabled Attachment (SEA)		
- ARO with Assist package features		
Compatibility with radios and base stations from Trimble, Topcon, and Leica	•	
Capability to install 3D grade systems from Trimble, Topcon, and Leica	•	
Product Link – cellular	•	
Product Link – dual cellular/satellite		•
Remote Flash/Troubleshoot	•	

ELECTRICAL	STANDARD	OPTIONAL
105 amp brush-type alternator (24 volt)	•	
Backup alarm	•	
Diagnostic connector	•	
Integrated halogen lights – 4 front, 2 rear	•	
6 LED lights		•
8 LED lights – premium		•
UNDERCARRIAGE	STANDARD	OPTIONAL
Heavy Duty undercarriage	•	
Cat Abrasion undercarriage	•	
Lifetime lubricated track rollers (8 + 2 carrier rollers) and idlers	•	
Track guiding guards – full, center, front/rear		•
SERVICE AND MAINTENANCE	STANDARD	OPTIONAL
Extended service intervals (1,000 hours* engine oil and filter, 1,000 hours power train)	•	
Ecology drains	•	
Fast fill ready		•
Bio hydraulic oil		•
Cold weather package (120V or 240V)		•
Shovel mounting bracket		•
High speed oil change		•
BLADES	STANDARD	OPTIONAL
VPAT blade	•	
Folding VPAT blade		•
Manual blade pitch	•	
Powered blade pitch		•
Precision Cutting Edges**	•	
ATTACHMENTS	STANDARD	OPTIONAL
Ripper Ready package		•
Winch ready		•
Dual Ripper/Winch Ready package		•
Winch (dealer installed)		•
Ripper with curved or straight shanks		•
Drawbar		•
Rear counterweight		•
Front pull device	•	
Protection packages		•
Rear screen		•

\*S-O-S sampling required. Please consult Operation and Maintenance Manual (OMM) for complete service information.

\*\*Available early 2024.

**Not all features are available in all regions. Please check with your local Cat dealer for specific offering availability in your area.**  
For additional information, refer to the Technical Specifications brochures for the D4 available at [www.cat.com](http://www.cat.com) or your Cat dealer.



オフロード法2014年  
基準適合

For more complete information on Cat products, dealer services and industry solutions, visit us on the web at [www.cat.com](http://www.cat.com).

© 2023 Caterpillar. All Rights Reserved.

VisionLink is a trademark of Caterpillar Inc., registered in the United States and in other countries.

Materials and specifications are subject to change without notice. Featured machines in photos may include additional equipment. See your Cat dealer for available options.

CAT, CATERPILLAR, LET'S DO THE WORK, their respective logos, Product Link, Slope Assist, S-O-S, Abrasion, "Caterpillar Corporate Yellow", the "Power Edge" and Cat "Modern Hex" trade dress as well as corporate and product identity used herein, are trademarks of Caterpillar and may not be used without permission.

[www.cat.com](http://www.cat.com) [www.caterpillar.com](http://www.caterpillar.com)

Based on the Labor, Safety and Health Laws in Japan, employers of small construction equipment are required to provide specific training for all operators on machines with machine weight less than 3 metric tons. For machines greater than 3 metric tons, operator needs to obtain operator license certification from a government-approved registered training school.

AEXQ3233-03 (04-2023)  
Replaces AEXQ3233-02  
Build Number: 16B  
(Aus-NZ, Chile, Europe, Japan,  
N Am, S Korea, Turkey)

