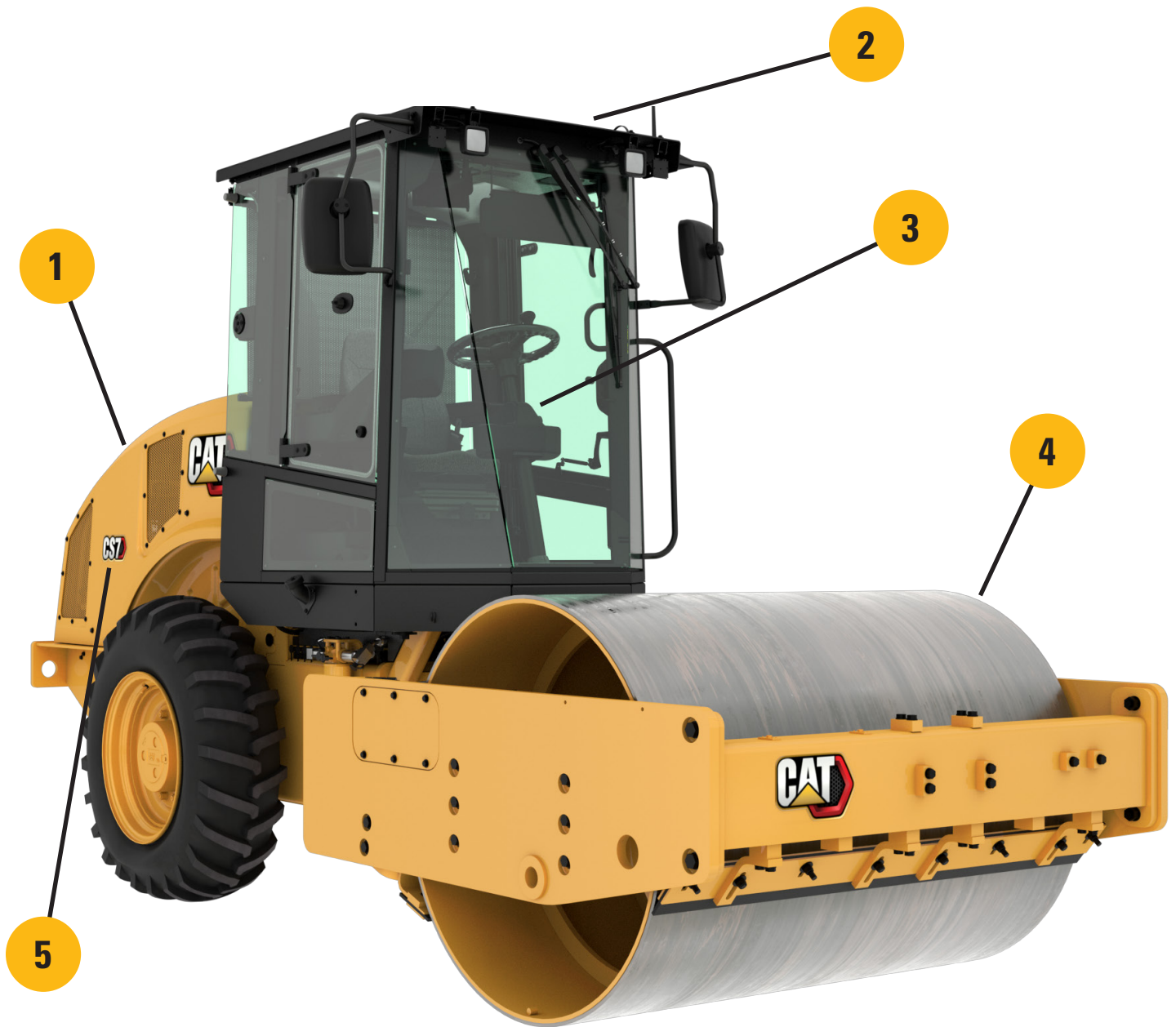


## 2023 Updates

# Cat<sup>®</sup> 7-Ton Vibratory Soil Compactors

Introducing updates to the Cat<sup>®</sup> 7-ton Vibratory Soil Compactors focused on engine, safety features, cab and drum enhancements, and weight-based nomenclature.



**1****ENGINE**

- Cat® C3.6 turbocharged engine
- ISO 14396:2002 100.0 hp (74.4 kW) engine power
- Meets U.S. EPA Tier 4 Final and EU Stage V emissions levels
- Aftertreatment includes DOC-DPF-SCR technologies
- Updated Diesel Exhaust Fluid (DEF) system
- Auto Engine Idle Shutdown (AEIS)

**2****SAFETY AND TECHNOLOGY FEATURES**

- Standard 3 in (76 mm) high visibility orange seat belt
- Optional seat belt alert system including a warning beacon and event log
- Product Link Elite (optional) offering more machine data and remote services capabilities

**3****CAB ENHANCEMENTS**

- Optional factory-installed AM/FM radio with USB ports and Bluetooth® wireless technology (cab configuration only)
- Dedicated phone holder
- Color LCD display
- Optional 1000 lumens LED working lights - choose between four (two front and two rear) or eight (four front and four rear) total lights

**4****DRUM ENHANCEMENTS**

- Chamfered drum edge less prone to leaving surface marks
- Optional polyurethane scrapers - contacting scrapers that provide superior drum cleaning versus the standard non-contacting steel scrapers
- MicroVibe™ option available - provides ultra-low and medium amplitudes. Ultra-low amplitude is ideal for working near sensitive areas such as bridge decks and old structures

**5****WEIGHT-BASED NOMENCLATURE**

- Nomenclature updated to better align with industry weight classifications
- CS44B changes to CS7 (7 metric ton, smooth drum)
- CP44B changes to CP7 (7 metric ton, padfoot drum)

Previous Model	Previous Serial Number Prefix	New Model	New Serial Number Prefix
CP44B	GNB	CP7	683
CS44B	4G3	CS7	YG4

For more complete information on Cat products, dealer services, and industry solutions, visit us on the web at [www.cat.com](http://www.cat.com)

© 2023 Caterpillar All rights reserved

Materials and specifications are subject to change without notice. Featured machines in photos may include additional equipment. See your Cat dealer for available options.

CAT, CATERPILLAR, LET'S DO THE WORK, their respective logos, "Caterpillar Corporate Yellow," the "Power Edge" and Cat "Modern Hex" trade dress as well as corporate and product identity used herein, are trademarks of Caterpillar and may not be used without permission.

QEXQ3164 (04-2023)  
Build Number 03A  
(N Am)

