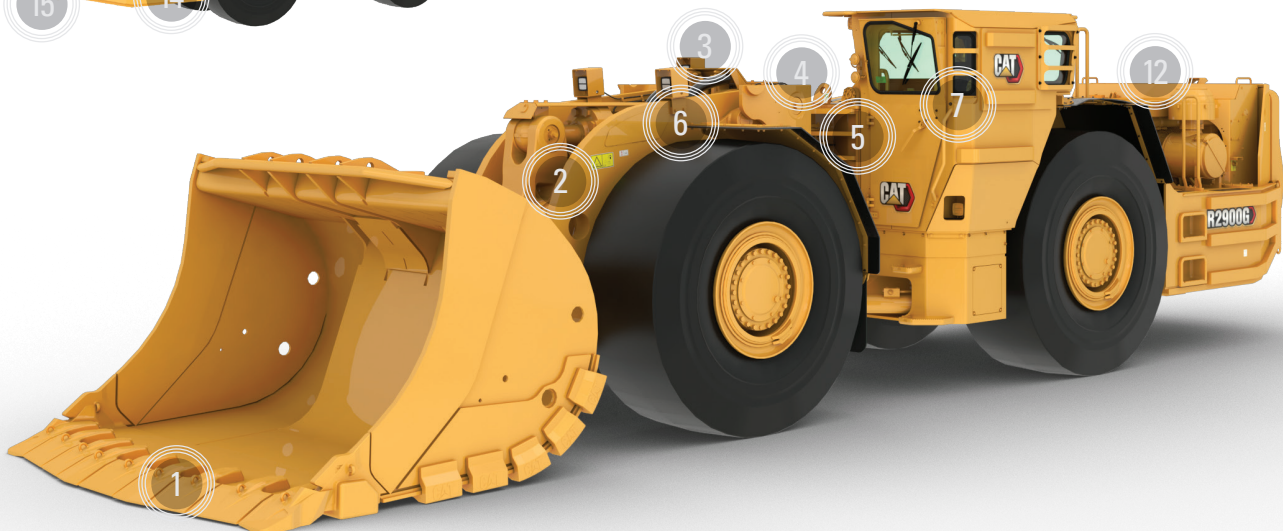
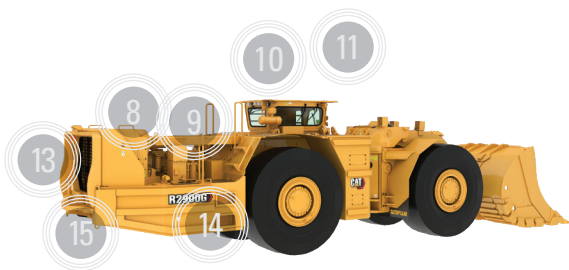


THE CAT® R2900G UNDERGROUND LOADER

**ENGINEERED FOR
PERFORMANCE.
DESIGNED FOR
COMFORT.
BUILT TO LAST.**

1. Multiple bucket options available plus full range of Cat® Ground Engaging Tools (GET) to achieve best productivity while maximizing bucket life
2. Bucket reach and bucket dump angle that are superior to those on competitive machines, for better loading and faster bucket emptying
3. Proven frame design for increased durability
4. Spread hitch design, which widens the distance between upper and lower hitch plates to distribute forces and increase bearing life
5. Proven Z-bar loader linkage geometry, which generates powerful breakout force and an increased rack back angle for better bucket loading and material retention
6. Aggressive hydraulic performance for machine responsiveness and improved loading times
7. Continuous focus on operator safety and comfort including ROPS/FOPS cabin with ergonomic layout plus interior and exterior safety details
8. Efficient Cat C15 engine provided in Tier 3/Stage IIIA or Tier 2/Stage II VR (ventilation reduction)
9. Optional wall flow/flow-through Diesel Particulate Filter, which complements the VR engine by further reducing particulate matter in the exhaust
10. VIMS Gen3 System for Machine Health Monitoring
11. Cat MineStar™ Solutions, including Command for underground, managed through onboard electronics; available automation-ready from the factory
12. Cat electrical components, such as connectors, wiring harnesses and ECMs, designed to live in corrosive environments
13. Radiator guard that swings open to allow service access; high-efficiency radiator offered as optional cooling package
14. Ground-level access to all tanks, filters, lubrication points and compartment drains, which simplifies servicing and reduces regular maintenance time
15. Brake release and tow hook option that allows you to remove the machine and disengage the park brake if the machine must be towed



THE CAT® R2900G UNDERGROUND LOADER



17 200 kg / 37,920 lb
RATED PAYLOAD

27 349 kg / 60,298 lb
BREAKOUT FORCE (SAE)

299 kW / 401 hp
ENGINE POWER
ISO14396:2002



DURABILITY AND SERVICABILITY

- » Frame that is engineered to withstand extreme forces generated during loading and tramping cycles.
- » Sealed Colleted Pins fitted to all bucket and lift arm hinge points for longer pin and bushing life; sealed joints retain lubrication and prevent contaminant entry.
- » Cat Electronic Technician (Cat ET) service tool, which enables quick electronic diagnosis of machine performance and key diagnostic data for effective maintenance and repairs.
- » Scheduled Oil Sampling Sample point adaptors fitted standard to the machine.

SUPERIOR CONTROL, COMFORT AND SAFETY FOR OPERATOR

- » Optional sound-suppressed cab provides a quiet, secure working environment.
- » Integrated Roll Over Protective Structure (ROPS) and Falling Object Protective Structure (FOPS) resiliently mounted to the frame, reducing vibration for a more comfortable ride.
- » Controls, levers, switches and gauges that are ergonomically positioned to maximize productivity and minimize operator fatigue.
- » Optional ride control system, which uses a nitrogen-filled oil accumulator in the hydraulic lift circuit to act as a shock absorber for the bucket and lift arms.



LOAD MORE EVERY CYCLE

- » Cat four-speed planetary power shift transmission that is Caterpillar designed and supported to provide maximum integration with the Cat C15 engine — delivering constant power over a wide range of operating speeds.
- » Torque rise that effectively matches transmission shift points for maximum efficiency and fast cycle times.
- » Powerful Cat hydraulics that deliver exceptional digging and lifting forces and fast cycle times. Steering hydraulic system designed for excellent steering response.
- » Features the Loadrite Payload Control System, which gives operators accurate, real-time updates on payload weights to help them reach maximum bucket capacities while reducing overloading.



SAFETY

- » Service area located on cold side of engine.
- » Operator Present System, which protects the machine and operator from uncontrolled machine movements.
- » Three engine shut-off switches and fire system activation valve that are accessed from ground level.
- » Hand rails and steps to provide 3-point contact for access to the machine and cabin.

