

ULTRA-CLASS ELECTRIC DRIVE TRUCKS UPDATES

794 AC
796 AC
798 AC



794 AC 796 AC 798 AC

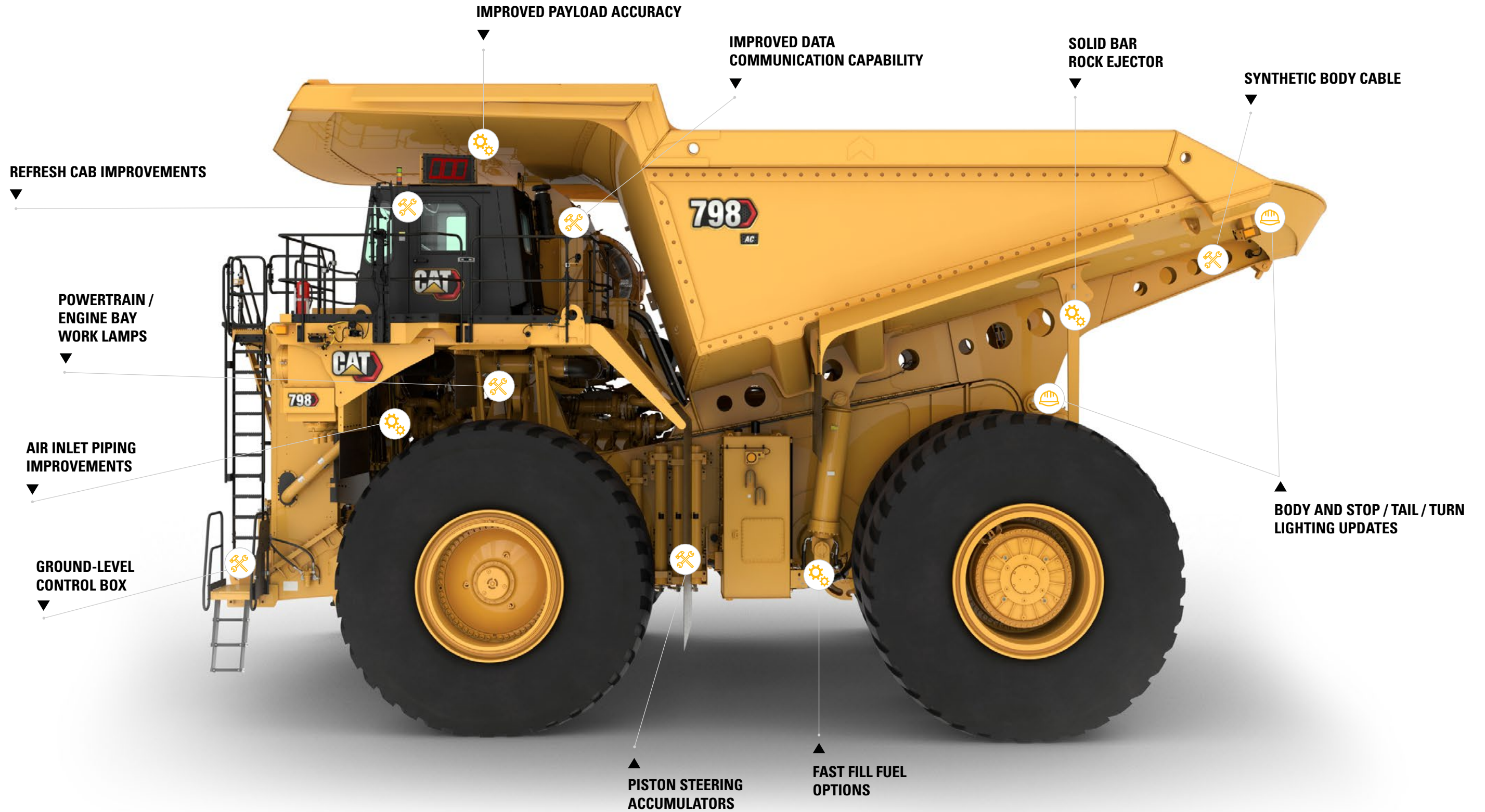
The newest ultra-class electric drive trucks incorporate customer feedback to improve maintainability and serviceability, enhance safety, and offer additional features and performance upgrades.

These updates are available now on new machines from factory. Additionally, many of the upgrades are retrofittable for existing machines.

TOGETHER WITH CAT® DEALERS

**WE'RE YOUR PARTNER
FOR THE LONG HAUL**





**SAFETY
ENHANCEMENTS**



**MAINTENANCE &
SERVICEABILITY UPGRADES**



**FEATURE & PERFORMANCE
IMPROVEMENTS**

AVAILABLE UPGRADES & RETROFITS

Available as standard or optional features on new 794 AC, 796 AC and 798 AC Cat® mining trucks. Many are also available as retrofits for existing machines. Contact your Cat dealer for availability.



794 AC / 796 AC / 798 AC

CAB REFRESH

REFRESH CAB IMPROVEMENTS

- Improved operator controls
 - Trans-hoist control incorporates drive and hoist controls in single lever
- 10-inch digital displays
- Improved wiper coverage
- Improved third party system integration (mounting and electrical integration)
- Improved operator experience from modified final drives

THREE-PIECE WINDSHIELD

- Improves visibility
- Reduces replacement cost and eases procurement (replaces curved, single piece design)
- Retrofittable as part of enhanced cab upgrade

SEATBELT REMINDER

- Visual and audible reminder to latch the seat belt
- Optional exterior beacon for visual confirmation to site personnel
- Ability to log and track seat belt compliance with Product Link™-equipped machines

IMPROVED HVAC AND ADVANCED CAB FILTRATION

- Increases airflow by 30%
- Decreases blower sound levels
- Cyclonic air pre-cleaner provides high-efficiency filtration levels to improve cabin air quality
- Enables addition of optional HEPA filter; odor-reducing filter; or ABEK filter to remove gases and vapors





SAFETY ENHANCEMENTS

ENGINE ACCESS DOOR REDESIGN

- Eliminates trip hazards
- Easier to open and ergonomic for single-person operation
- Up to 85° of open range increases flexibility and access while working in engine bay

TOP DECK TREAD PLATE

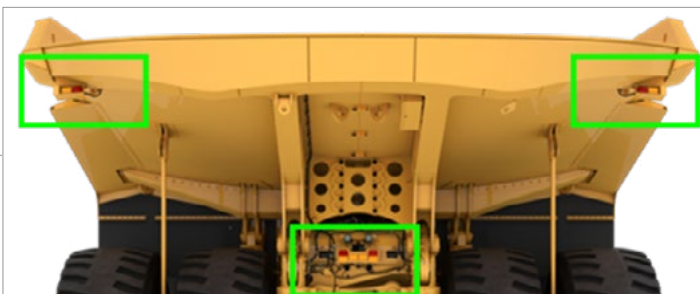
- Dimpled surface increases traction
- Enhances durability over anti-skid paint

SECONDARY EGRESS LADDER SHIELD

- Standard on all new trucks from factory
- Protects operator from thermal exposure from engine bay in case of emergency egress

LIGHTING UPDATES

- Updated body and chassis lights provide better lighting for service/inspection with improved durability
- Creates commonality across Cat mining trucks
- 4200 lumen low beams
- Increased visibility with front-of-machine turn lights



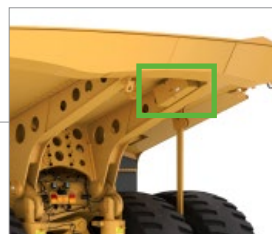
MAINTENANCE & SERVICEABILITY UPGRADES

ADDITIONAL POWERTRAIN/ENGINE BAY WORK LAMPS

- Directs more light at the engine bay, hydraulic pumps, and rear axle housing
- Improves visibility for inspection and maintenance

OPTIONAL SYNTHETIC BODY CABLE

- 40% lighter than standard steel cable, easier for one person to handle and install
- Protective storage box mounted under the body
- Retrofittable



GROUND-LEVEL CONTROL BOX

- Central location for battery disconnect, engine shutdown switch, engine lockout, machine lockout, stairway lights, VIMS service port, powered stairway control (if equipped) and autonomous lockout (if equipped)
- Dedicated jump start receptacle



SIMPLIFIED ELECTRICAL SYSTEM

- Improves troubleshooting, circuit protection and overall serviceability
- Consistent with other Cat mining trucks

OPTIONAL GROUND-LEVEL AUTOLUBE RESERVOIR

- Easier access for inspection, refill and maintenance
- Consistent with other Cat mining trucks

PISTON STEERING ACCUMULATORS

- Replaces bladder-style accumulators
- Improves reliability and durability
- Common across many Cat mining trucks, simplifying parts stocking and availability



RELOCATED AUXILIARY HOIST QUICK DISCONNECTS

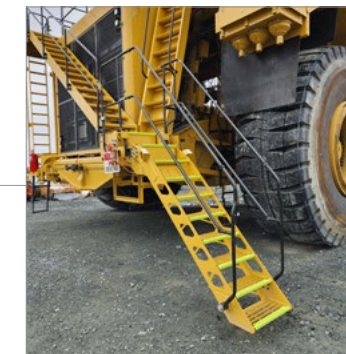
- Increases clearance between the hose and tire by 45 mm (1.8 inches)
- Prevents tire tread and/or mud build-up from damaging the hoist cylinder
- Increases reliability

FAST FILL FUEL OPTIONS

- 300 and 210 gallon-per-minute (GPM) fast fill fuel options available in addition to 150 GPM option
- Ultrasonic jet sensor prevents manual override during filling, saving from potential tank damage

ENHANCED ACCESS SYSTEM

- Consistent with Cat legacy-design powered stairways
- 600mm-wide stairs and access ways
- Improves reliability and durability
- Common design and parts improve maintainability, while making parts stocking and replacing easier
- Retrofittable





794 AC / 796 AC / 798 AC

FEATURE & PERFORMANCE IMPROVEMENTS

IMPROVED PAYLOAD ACCURACY WITH CAT PAYLOAD MONITORING SYSTEM

- Within 3% accuracy, regardless of load placement
- Better accuracy in case of overload
- Carryback measurement and reporting

ROAD ANALYSIS CONTROL

- Haul road management tool consistent with other Cat mining trucks
- Tracks and benchmarks haul road conditions
- Improves haul road maintenance to maximize truck life cycle
- Correlates trend information to repair records and failure data
- Improves productivity, performance and safety

IMPROVED DATA COMMUNICATION CAPABILITY WITH LATEST CONTROLLERS

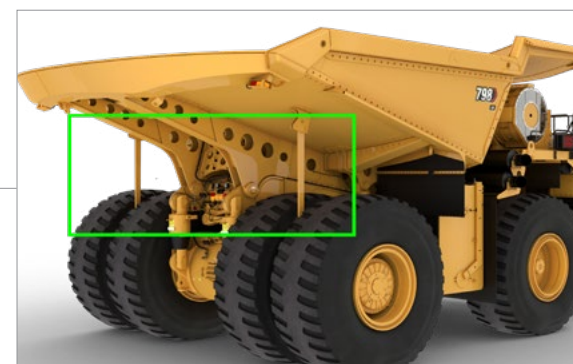
- Increases data transfer rates through serial port in Command mode
- Enables additional ethernet data streaming with high data transfer rates

IMPROVED TIRE HEALTH MONITORING

- Monitors Tonne-Kilometer Per Hour (TKPH) at each truck corner
- Better tire management, especially at Command sites

OPTIONAL SOLID BAR ROCK EJECTOR

- Improves performance in demanding applications where chain rock ejectors are less effective
- Retrofittable



BRAIDED HARNESES

- Standard on 794 AC, 796 AC, and 798 AC trucks
- Aligns with other Cat mining trucks
- Improves durability
- Replaces p-clips with more durable systems
- Terminal strips removed from left-hand-side large terminal boxes with internal harnesses; improves serviceability and reduces downtime

798 AC HIGH ALTITUDE TRUCKS COMMAND-READY

- Equipped for future autonomous operation
- Completes Command-ready capability for full suite of AC drive ultra-class trucks
- Simplifies integration of entire truck fleet for future autonomous operation

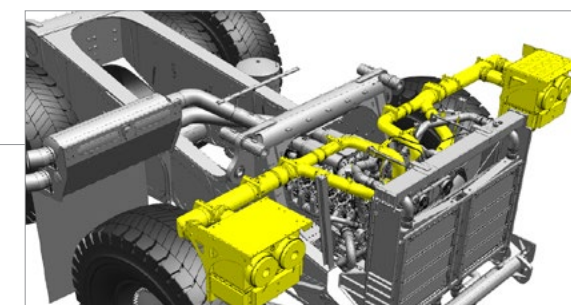
INTEGRATED AUTOLUBE SYSTEM

- Improves machine greasing capability and reliability
- Improves pump reliability
- Auto-shut-off system prevents tank overflow and pressurization
- Monitored through onboard diagnostics
- Retrofittable



AIR INLET PIPING IMPROVEMENTS

- Two rotomolded air inlet tubes replace four steel inlet tubes
- Reduces total system weight by 154 kg (340 lbs)
- Common with the 797F and 798 AC High Altitude trucks
- Includes mud flaps to prevent buildup
- Improves safety, durability, and serviceability



AIR INLET PIPE PRESSURE SENSORS

- Electronic pressure sensors monitor filter restriction, automatically derate the engine when pressures are above threshold
- Replaces manual pressure gauges in cab
- Improves productivity and performance
- Restriction events logged to warn operator
- Retrofittable



PEDJ1079

© 2022 Caterpillar. All Rights Reserved. CAT, CATERPILLAR, LET'S DO THE WORK, their respective logos, "Caterpillar Corporate Yellow", the "Power Edge" and Cat "Modern Hex" trade dress as well as corporate and product identity used herein, are trademarks of Caterpillar and may not be used without permission.

794 AC / 796 AC / 798 AC

[CAT.COM/MININGTRUCKS](https://www.caterpillar.com/miningtrucks)