

CAT[®] ATTACHMENTS MINI EXCAVATORS COMPATIBILITY GUIDE



FOR HYDRO-MECHANICAL TOOLS

September 2023

COMPATIBILITY GUIDE INDEX

AUGERS / BLADES	3
BROOMS / BUCKETS	4
COLD PLANERS.....	5
COUPLERS.....	6
FLAIL MOWERS / HAMMERS	8
SHEARS / MULCHERS	10
THUMBS	11
TILT ROTATE SYSTEMS	12
TRENCHERS / VIBRATORY PLATE COMPACTORS.....	13

THIS DOCUMENT LISTS COMPATIBILITY BY BASE MODEL ONLY, WHICH COVERS ALL MODEL SERIES UNLESS SPECIFIED OTHERWISE.

THIS DOCUMENT LISTS COMPATIBILITY FOR CAT® MINI EXCAVATOR MACHINES AND HYDRO-MECHANICAL ATTACHMENTS IN THE FORM OF:

PART NUMBER | INTERFACE TYPE | HYDRAULICS TYPE

NOTE: INTERFACE AND HYDRAULIC TYPES USE ABBREVIATIONS; SEE THE MATCHING LEGEND ON EACH PAGE FOR REFERENCE. FOR SPECIFIC COMPATIBILITY REQUIREMENTS NOT COVERED IN THIS DOCUMENT, CONSULT YOUR LOCAL CAT DEALER.

MINI EXCAVATOR ATTACHMENTS COMPATIBILITY



Augers

Cat® Augers are used for drilling holes for footings, fencing, signs, trees and shrubs in construction, agricultural, and landscaping applications. They are designed with the right amount of speed and torque for maximum productivity in a broad range of soil types.

UNDER 3 TON

Model (Part Number)	301.5	301.6	301.7	301.8	302	302.7
A11 (218-3206 PO 1A)	■	■	■	■	■	
A11 (218-3207 PO 1A)						■
A23 (218-3197 PO 1A)						■

3 – 4 TON

Model (Part Number)	303	303.5	304
A23 (218-3198 PO 1A)	■	■	■
A41 (220-7137 PO 1A)	■	■	■

5 – 6 TON

Model (Part Number)	305	305.5	306	306.5
A41 (275-1000 PO 1A)	■	■	■	■
A68 (275-1001 PO 1A)	■	■	■	■

7 – 9 TON

Model (Part Number)	307	307.5	308	309
A68 (313-1460 PO 1A)	■	■	■	■



Angle Blades

Cat Angle Blades are useful work tools in a wide range of applications for moving dirt, gravel, livestock waste and snow. They are also useful for finish grade work in construction and landscaping.

6 TON

Width (Part Number)	306
2134 mm (84 in)* (177-1990 SSL SF14)	■

* Requires XTC coupler option to be installed on machine.

PO: Pin On
SSL: Skid Steer Loader

Pin on directly to stick or usable with Pin Grabber style coupler.
Requires machine to have a Skid Steer Loader style coupler.

1A: First Auxiliary
SF14: Standard Flow 14

Requires first auxiliary hydraulics on machine to operate.
Requires standard flow hydraulics with 14 pin electrical connection.

MINI EXCAVATOR ATTACHMENTS COMPATIBILITY



Angle Brooms

Cat Angle Brooms for Skid Steer Loaders, Compact Track Loaders, Backhoe Loaders, Compact Wheel Loaders and Small Wheel Loaders are ideal for clearing parking lots, industrial plants, mill yards, airport runways, streets, driveways and lanes.

6 TON

Model (Part Number)

306

BA118C (448-5660* SSL | SF 14)



* Requires XTC coupler option to be installed on machine.



Buckets – Multi-Purpose

Cat Multi-Purpose Buckets for Cat Skid Steer Loaders and Compact Track Loaders are extremely durable buckets, ideal for a wide variety of tasks in construction, landscaping, industrial and demolition applications.

5 – 6 TON

Model (Part Number)

306

1883 mm (74 in) w/Spill Guard, Bolt-On cutting Edge (426-6536 SSL | SF)



2036 mm (80 in) w/Spill Guard, Bolt-On cutting Edge (426-6548 SSL | SF)



Buckets – Tilting Ditch Cleaning

Tilting Ditch Cleaning Buckets for Cat Mini Excavators are ideal for cleaning wide trenches, loading materials, slope cutting, grading and finishing work in construction, landscaping and road maintenance applications.

1 – 2 TON

Model (Part Number)

301.5

301.6

301.7

301.8

302

302.7

1000 mm (39 in) (244-3073 PO | 1A)



1000 mm (39 in) (244-3080 CW05 | 1A)



1100 mm (43 in) (246-0093 CW05 | 1A)



1100 mm (43 in) (246-0094 PO | 1A)



PO: Pin On
SSL: Skid Steer Loader
CW05: CW-05 Coupler

Pin on directly to stick or usable with Pin Grabber style coupler.
Requires machine to have a Skid Steer Loader style coupler.
Requires machine to have a CW-05 type coupler.

1A: First Auxiliary
SF: Standard Flow
SF14: Standard Flow 14

Requires first auxiliary hydraulics on machine to operate.
Requires standard flow hydraulics.
Requires standard flow hydraulics with 14 pin electrical connection.

MINI EXCAVATOR ATTACHMENTS COMPATIBILITY

Buckets – Tilting Ditch Cleaning – continued

3 – 4 TON

Model (Part Number)	303	303.5	304	305	305.5	306	306.5
1200 mm (47 in) (279-4325 PO 1A)	■	■	■				
1200 mm (47 in) (249-4182 CW05 1A)	■	■	■				

5 – 6 TON

Model (Part Number)	303	303.5	304	305	305.5	306	306.5
1500 mm (59 in) (250-4463 CW10 1A)				■	■	■	■
1600 mm (63 in) (274-9022 PO 1A)				■	■	■	■



Cold Planers

Cat Cold Planers are designed for small paving jobs in residential and commercial applications and are primarily used to economically restore asphalt and concrete surfaces. They are ideal for milling imperfections prior to resurfacing, removing deteriorated pavement, removing traffic lane stripes and jobs where the use of dedicated planers is limited. The Cat Cold Planers are designed for use on Cat Skid Steer Loaders, Compact Track Loaders, Compact Wheel Loaders and Backhoe Loaders.

5 – 10 TON

Model (Part Number)	305	306	307	307.5	308	309	310
PC35 (619-6535 TI 1A)	■	■	■	■	■	■	
PC45 (619-6545 TI 1A)			■	■	■	■	■

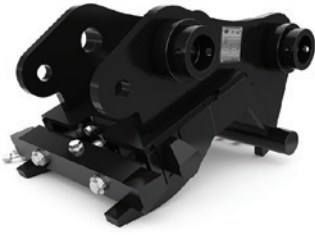
TI: Tool Interface
PO: Pin On
CW05: CW-05 Coupler

Requires a mounting bracket to fit to machine.
Pin on directly to stick or usable with Pin Grabber style coupler.
Requires machine to have a CW-05 type coupler.

1A: First Auxiliary
CW10: CW-10 Coupler

Requires first auxiliary hydraulics on machine to operate.
Requires machine to have a CW-10 type coupler.

MINI EXCAVATOR ATTACHMENTS COMPATIBILITY



Couplers – CW Series

CW Quick Couplers increase the utilization of an excavator by becoming an all-purpose tool carrier. Simply release one work tool attachment and pick up another in a matter of seconds. Available in hydraulic or manual (spindle) versions.

1 – 10 TON

Model (Part Number)	301.5	301.6	301.7	301.8	302	302.7	303	303.5	304	305	306	306.5	307	307.5	308	309	310
CW-05 Hydraulic 1 Ton (525-4593 PO DFI)	■	■	■	■	■												
CW-05 Hydraulic 2 Ton (525-4594 PO DFI)						■											
CW-05 Hydraulic 3–4 Ton (525-4595 PO DFI)							■	■	■								
CW-05 Hydraulic 1 Ton (525-4596 PO DFI)	■	■	■	■	■												
CW-05 Hydraulic 2 Ton (525-4597 PO DFI)						■											
CW-05 Hydraulic 3–4 Ton (525-4598 PO DFI)							■	■	■								
CW-10 Hydraulic 4 Ton (525-4611 PO DFI)							■	■	■								
CW-10 Hydraulic 8 Ton (525-4612 PO DFI)													■	■	■	■	
CW-10 Hydraulic 4 Ton (525-4613 PO DFI)							■	■	■								
CW-10 Hydraulic 5 Ton (525-4614 PO DFI)									■	■	■	■					
CW-10 Hydraulic 8 Ton (525-4615 PO DFI)													■	■	■	■	
CW-10 Hydraulic 10 Ton (542-5450 PO DFI)																	■

PO: Pin On

Pin on directly to stick or usable with Pin Grabber style coupler.

DFI: Dedicated Factory Installed

Requires dedicated factory installed hydraulics to operate.

MINI EXCAVATOR ATTACHMENTS COMPATIBILITY



Couplers – Dual Lock™ Pin Grabber

Dual Lock Pin Grabber Couplers allow work tools to be changed quickly - improving overall production and increasing machine versatility.

3 – 10 TONS

Model (Part Number)	303	303.5	304	305	306	306.5	307	307.5	308	309	310
3 – 4 Ton Hydraulic (485-5300 PO DFI)	■	■	■								
5 Ton Hydraulic (485-5301 PO DFI)				■	■	■					
8 Ton Hydraulic (485-5302 PO DFI)							■	■	■	■	
10 Ton Hydraulic (485-5306 PO DFI)											■



Couplers – S Type

S Type Couplers are an optimal design for a dedicated quick coupler solution. Low offset, pin grabber ability, and a wedge type locking system ensures a tight fit, no attachment play during use. It also creates the solution to exchange work tools among different platforms and brands.

3 – 10 TON

Model (Part Number)	303	303.5	304	305	305.5	306	306.5	307	307.5	308	309	310
S-40 Pin Grabber 3 Ton (576-1204 PO DFI)	■	■	■									
S-40 LCS 3 Ton (576-1205 PO DFI)	■	■	■									
S-40 Pin Grabber 5 – 6 Ton (576-1206 PO DFI)				■	■	■	■					
S-40 Pin Grabber LCS 5 – 6 Ton (576-1207 PO DFI)				■	■	■	■					
S-45 Pin Grabber LCS 7 – 9 Ton (576-1210 PO DFI)									■	■	■	
S-45 Pin Grabber LCS 10 Ton (576-1211 PO DFI)												■
S-50 Pin Grabber 8 Ton (576-1200 PO DFI)								■	■	■	■	
S-50 Pin Grabber LCS 8 Ton (576-1201 PO DFI)								■	■	■	■	
S-50 Pin Grabber 10 Ton (576-1202 PO DFI)												■
S-50 Pin Grabber LCS 10 Ton (576-1203 PO DFI)												■

PO: Pin On

Pin on directly to stick or usable with Pin Grabber style coupler.

DFI: Dedicated Factory Installed

Requires dedicated factory installed hydraulics to operate.

MINI EXCAVATOR ATTACHMENTS COMPATIBILITY



Couplers – Tilting Dual Lock™ Pin Grabber

Tilting Dual Lock Pin Grabber Couplers allow work tools to be changed quickly, improving overall production and increasing machine versatility. The Tilting Dual Lock Coupler maintains a tight fit with an innovative wedge design. It can be used with compatible pin-on work tools and in front shovel mode with buckets. The Tilting Dual Lock Coupler also comes with a visible locking mechanism for added security.

5 – 10 TON

Model (Part Number)	305	306	306.5	307	307.5	308	309
5 Ton Tilting Dual Lock Pin Grabber (485-5304 PO DFI)	■	■	■				
8 Ton Tilting Dual Lock Pin Grabber (485-5305 PO DFI)				■	■	■	■



Flail Mowers

Cat Flail Mowers for Mini Excavators are designed for high-performance cutting and mulching of vegetation and undergrowth from overgrown and forested terrain. Flail Mowers are ideal for environmental maintenance applications, such as mowing along ditches, fence rows and retention ponds and cleaning up high banks and slopes.

5 – 10 TON

Model (Part Number)	305	306	306.5	307	307.5	308	309	310
HMF110 (504-6010 PO 1A)	■	■	■					
HMF210 (504-6011 PO 1A)				■	■	■	■	■



Hammers

Cat Hammers are high performance breakers, designed for maximum performance on demolition, construction and road work.

1 – 2 TON

Model (Part Number)	300.9D	301.5	301.6	301.7	301.8	302	302.7
B1 (532-9101 TI SF)		■	■	■	■	■	
B1s (532-9201 TI SF)		■	■	■	■	■	
B1 Pin On (573-4711 PO SF)	■						
B2 (532-9102 TI SF)		■	■	■	■	■	■
B2s 532-9202 TI SF)		■	■	■	■	■	■
B2 Pin On (576-5525 PO 1A)		■	■	■	■	■	
B2 Side Mount (576-5530 PO 1A)		■	■	■	■	■	

PO: Pin On Pin on directly to stick or usable with Pin Grabber style coupler.
TI: Tool Interface Requires a mounting bracket to fit to machine.
DFI: Dedicated Factory Installed Requires dedicated factory installed hydraulics to operate.

1A: First Auxiliary
SF: Standard Flow

Requires first auxiliary hydraulics on machine to operate.
 Requires standard flow hydraulics and no electrical connection.

MINI EXCAVATOR ATTACHMENTS COMPATIBILITY

Hammers — continued

1 – 2 TON

Model (Part Number)	300.9D	301.5	301.6	301.7	301.8	302	302.7
B2 Side Mount (576-5540 PO 1A)		■	■	■	■	■	
H35s (561-2548 TI SF)		■	■	■	■	■	
H45s (561-2549 TI SF)		■	■	■	■	■	■

3 – 4 TON

Model (Part Number)	303	303.5	304
B2 (532-9102 TI SF)	■	■	
B2s (532-9202 TI SF)	■	■	
B4 (532-9104 TI SF)			■
B4s (532-9204 TI SF)			■
B4 Side Mount (532-9304 PO 1A)	■	■	■
B6 (532-9106 TI SF)			■
B6s (532-9206 TI SF)			■
H45s (561-2549 TI SF)	■	■	
H55s (561-2551 TI SF)			■

5 – 6 TON

Model (Part Number)	305	305.5	306	306.5
B4 (532-9104 TI SF)	■	■		
B4s (532-9204 TI SF)		■		
B6 (532-9106 TI SF)	■	■	■	■
B6s (532-9206 TI SF)			■	
B6 Side Mount (532-9306 PO 1A)	■	■	■	
B8 (532-9108 TI SF)			■	■
B8s (532-9208 TI SF)			■	■
H55s (561-2551 TI SF)	■	■		
H65s (561-2552 TI SF)	■	■	■	■

7 – 9 TON

Model (Part Number)	307	307.5	308	309
B6 (532-9106 TI SF)	■	■	■	■
B6s (532-9206 TI SF)	■	■	■	■
B8 (532-9108 TI SF)		■	■	■
B8s (532-9208 TI SF)		■	■	■
B8 Side Mount (532-9308 PO 1A)	■	■	■	■
B9 (532-9109 TI SF)		■	■	■
B9s (532-9209 TI SF)		■	■	■
H80s (561-2553 TI SF)		■		■
H95s (561-2555 TI SF)	■	■	■	■

PO: Pin On
TI: Tool Interface

Pin on directly to stick or usable with Pin Grabber style coupler.
Requires a mounting bracket to fit to machine.

1A: First Auxiliary
SF: Standard Flow

Requires first auxiliary hydraulics on machine to operate.
Requires standard flow hydraulics and no electrical connection.

MINI EXCAVATOR ATTACHMENTS COMPATIBILITY

Hammers — continued

10 TON

Model (Part Number)	310
B9 (532-9109 TI SF)	■
B9s (532-9209 TI SF)	■
H95s (561-2555 TI SF)	■



Mobile Scrap & Demolition Shears

Steel-frame demolition and scrap processing are the starting points for metals recycling. Cat Scrap and Demolition Shears power through these applications, providing the production and reliability that keep your operation in the black. Available in sizes to fit Cat machines from skid-steers to large excavators.

5 – 9 TON

Model (Part Number)	305	306	306.5	307	307.5	308	309	310
S308 (583-8100 TI 2A)	■	■	■	■	■	■	■	■



Mulchers

Cat Mulchers for Skid Steer Loaders and Compact Track Loaders are designed for high-performance cutting and mulching vegetation and undergrowth from forested terrain. The hydraulic mulcher reduces saplings, shrubs and trees into mulched material, making it ideal for environmental maintenance, such as creating fire lanes. Other applications include land reclamation, foliage removal from building construction sites, and shredding pruned material and organic waste for biomass production.

7 – 10 TON

Model (Part Number)	307	307.5	308	309	310
HM208 (504-6012 PO 1A)	■	■	■	■	■
HM210 (504-6013 PO 1A)	■	■	■	■	■

PO: Pin On
TI: Tool Interface

Pin on directly to stick or usable with Pin Grabber style coupler.
Requires a mounting bracket to fit to machine.

1A: First Auxiliary
2A: Second Auxiliary

Requires first auxiliary hydraulics on machine to operate.
Requires second auxiliary hydraulics on machine to operate.

MINI EXCAVATOR ATTACHMENTS COMPATIBILITY



Thumbs – Pro Series Hydraulic

Pro Series Hydraulic Thumbs (Pro and Pro Plus models) offer the best load control and are rugged enough for demolition, handling rip rap and other heavy-duty tasks.

7 – 9 TON

Model (Part Number)	307	307.5	308	309
671 mm (26 in) 4 Teeth / 2 Tines (305-6744 PO 1A)	■	■	■	■
858 mm (34 in) 6 Teeth / 2 Tines (305-6745 PO 1A)	■	■	■	■



Thumbs – Utility

Utility thumbs offer a cost-effective thumb design with hydraulic thumb control, combined with wide compatibility with machines, buckets and couplers.

1 – 2 TON

Model (Part Number)	301.5	301.6	301.7	301.8	302	302.7
292 mm (11 in) 5 Teeth / 2 Tines (555-8424 PO 1A)	■	■	■	■	■	
346 mm (14 in) 5 Teeth / 2 Tines (451-6380 PO 1A)						■

3 – 4 TON

Model (Part Number)	303	303.5	304
326 mm (13 in) 8 Teeth / 2 Tines (452-2740 PO 1A)	■	■	■

5 – 6 TON

Model (Part Number)	305	306	306.5
356 mm (14 in) 8 Teeth / 2 Tines (575-0496 PO 1A)	■	■	■

7 – 9 TON

Model (Part Number)	307	307.5	308	309
435 mm (17 in) 4 Teeth / 2 Tines (305-6740 PO 1A)	■	■	■	■
435 mm (17 in) 6 Teeth / 2 Tines (305-6741 PO 1A)	■	■	■	■

10 TON

Model (Part Number)	310
457 mm (18 in) 6 Teeth / 2 Tines (540-6735 PO 1A)	■

PO: Pin On

Pin on directly to stick or usable with Pin Grabber style coupler.

1A: First Auxiliary

Requires first auxiliary hydraulics on machine to operate.

MINI EXCAVATOR ATTACHMENTS COMPATIBILITY



Tiltrotators

Cat Tiltrotators for excavators provide 360-degree rotation and 40-degree tilting action side-to-side, allowing the machine to reach more work areas from a single position. The tiltrotator enables the operator to maneuver around posts, rocks, and other obstacles, as well as to reach along ditch edges more easily.

1 – 4 TON

Model (Part Number)	302.7 ¹	303 ²	303.5 ²	304 ²
TRS4 (608-4480 S40 1A)		■	■	■
TRS4 (608-4481 PO 1A)		■	■	■
TRS4 (608-4482 PO 1A)		■	■	■
TRS4 (608-4483 PO 1A)	■			
TRS4 (608-4484 PO 1A)	■			

5 – 6 TON

Model (Part Number)	305 ³	306 ³	306.5 ³
TRS6 (585-0421 S40 1A)	■	■	■
TRS6 (585-0422 S40 1A)	■	■	
TRS6 (585-0423 PO 1A)	■	■	
TRS6 (585-0424 PO 1A)	■	■	
TRS6 (585-0425 PO 1A)	■	■	

7 – 10 TON

Model (Part Number)	307.5 ⁴	308 ⁵	309 ⁶	310 ⁷
TRS8 (570-7120 S50 1A)	■	■	■	■
TRS8 (570-7121 S50 1A)	■	■	■	■
TRS8 (570-7122 PO 1A)	■	■	■	
TRS8 (570-7123 PO 1A)				■
TRS8 (570-7124 PO 1A)	■	■	■	
TRS8 (570-7125 PO 1A)				■
TRS8 (617-0566 S45 1A)	■	■	■	■
TRS8 (617-0567 PO 1A)	■	■	■	
TRS8 (617-0568 PO 1A)				■
TRS8 (617-0570 S50 1A)	■	■	■	■
TRS8 (617-0571 PO 1A)	■	■	■	
TRS8 (617-0572 PO 1A)				■
TRS8 (617-0573 PO 1A)	■	■	■	
TRS8 (617-0574 PO 1A)				■

4. Compatible only with serial number prefixes GW7 1 and up

5. Compatible only with serial number prefixes GG8 1 and up, GW8 1 and up

6. Compatible only with serial number prefixes GG8 1 and up, GW9 1 and up

7. Compatible only with serial number prefixes GWT 1 and up

PO: Pin On
S40: S-40
S45: S-45
S50: S-50

Pin on directly to stick or usable with Pin Grabber style coupler.
Requires machine to have a S-40 type coupler.
Requires machine to have a S-45 type coupler.
Requires machine to have a S-50 type coupler.

1A: First Auxiliary
SF: Standard Flow

Requires first auxiliary hydraulics on machine to operate.
Requires standard flow hydraulics and no electrical connection.

MINI EXCAVATOR ATTACHMENTS COMPATIBILITY



Trenchers

Cat Trenchers are designed for cutting narrow straight trenches in the soil prior to laying electrical, telephone and cable lines, or water and gas pipe. Trenchers are ideal for residential, commercial, agricultural, building construction, lawn care and golf course maintenance.

6 TON

Model (Part Number)	306
T109 Manual Side Shift (261-4806 SSL SF)	■
T109 Manual Side Shift (253-9509 SSL SF)	■
T112 Manual Side Shift (233-2346 SSL SF)	■

* Requires XTC coupler option to be installed on machine.



Vibratory Plate Compactors

Vibratory Plate Compactors are used for compacting soil, sand or gravel prior to pouring concrete or laying asphalt. They are also ideal for asphalt patch work. Their capabilities and lower investment and maintenance costs make them popular with pavers, general contractors and utility contractors in residential, commercial or industrial applications.

2 – 10 TON

Model (Part Number)	302.7	303	303.5	304	305	305.5	306	307	307.5	308	309	310
CVP16 (612-9616 TI 1A)	■	■	■	■	■		■					
CVP28 (612-9628 TI 1A)		■	■	■	■	■	■	■	■	■	■	
CVP40 (612-9640 TI 1A)							■	■	■	■	■	■
CVP55 (612-9655 TI 1A)								■	■	■	■	■

SSL: Skid Steer Loader
SF: Standard Flow

Requires machine to have a Skid Steer Loader style coupler.
Requires standard flow hydraulics and no electrical connection.

1A: First Auxiliary
TI: Tool Interface

Requires first auxiliary hydraulics on machine to operate.
Requires a mounting bracket to fit to machine.

© 2023 Caterpillar. All Rights Reserved. CAT, CATERPILLAR, LET'S DO THE WORK, their respective logos, "Caterpillar Corporate Yellow", the "Power Edge" and Cat "Modern Hex" trade dress as well as corporate and product identity used herein, are trademarks of Caterpillar and may not be used without permission