

# CAT<sup>®</sup> ATTACHMENTS MINI EXCAVATORS COMPATIBILITY GUIDE



**FOR HYDRO-MECHANICAL TOOLS**

April 2026

# COMPATIBILITY GUIDE INDEX

AUGERS .....	3
BUCKETS .....	4
COLD PLANERS / COUPLERS .....	5
COUPLERS / FLAIL MOWERS / GRAPPLES .....	7
GRAPPLES / HAMMERS .....	8
SHEARS / MULCHERS .....	10
THUMBS .....	11
TILTROTATORS .....	12
VIBRATORY PLATE COMPACTORS .....	13

---

THIS DOCUMENT LISTS COMPATIBILITY BY BASE MODEL ONLY, WHICH COVERS ALL MODEL SERIES UNLESS SPECIFIED OTHERWISE.

THIS DOCUMENT LISTS COMPATIBILITY FOR CAT® MINI EXCAVATOR MACHINES AND HYDRO-MECHANICAL ATTACHMENTS IN THE FORM OF:

**MODEL (PART NUMBER | INTERFACE TYPE | HYDRAULICS TYPE)**

NOTE: INTERFACE AND HYDRAULIC TYPES USE ABBREVIATIONS; SEE THE MATCHING LEGEND ON EACH PAGE FOR REFERENCE. FOR SPECIFIC COMPATIBILITY REQUIREMENTS NOT COVERED IN THIS DOCUMENT, CONSULT YOUR LOCAL CAT DEALER.

# MINI EXCAVATOR ATTACHMENTS COMPATIBILITY



## Augers

Cat® Augers are used for drilling holes for footings, fencing, signs, trees and shrubs in construction, agricultural, and landscaping applications. They are designed with the right amount of speed and torque for maximum productivity in a broad range of soil types.

### UNDER 3 TON

Model (Part Number)	301.5	301.6	301.7	301.8	302	302.7
A11 (218-3206 PO   1A)	■	■	■	■	■	
A11 (218-3207 PO   1A)						■
A23 (218-3197 PO   1A)						■

### 3 – 4 TON

Model (Part Number)	303	303.5	304
A23 (218-3198 PO   1A)	■	■	■
A41 (220-7137 PO   1A)	■	■	■

### 5 – 6 TON

Model (Part Number)	305	305.5	306	306.5
A41 (275-1000 PO   1A)	■	■	■	■
A68 (275-1001 PO   1A)	■	■	■	■

### 7 – 9 TON

Model (Part Number)	307	307.5	308	309
A68 (313-1460 PO   1A)	■	■	■	■

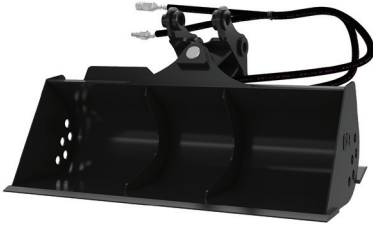
PO: Pin On

Pin on directly to stick or usable with Pin Grabber style coupler.

1A: First Auxiliary

Requires first auxiliary hydraulics on machine to operate.

# MINI EXCAVATOR ATTACHMENTS COMPATIBILITY



## Buckets – Tilting Ditch Cleaning

Tilting Ditch Cleaning Buckets for Cat Mini Excavators are ideal for cleaning wide trenches, loading materials, slope cutting, grading and finishing work in construction, landscaping and road maintenance applications.

### 1 – 2 TON

Model (Part Number)	301.5	301.6	301.7	301.8	302	302.7
1000 mm (39 in) (244-3073 PO   1A)	■	■	■	■	■	
1000 mm (39 in) (244-3080 CW05   1A)	■	■	■	■	■	
1100 mm (43 in) (246-0093 CW05   1A)						■
1100 mm (43 in) (246-0094 PO   1A)						■

### 3 – 4 TON

Model (Part Number)	303	303.5	304
1200 mm (47 in) (621-0448 PO   1A)	■	■	■
1200 mm (47 in) (621-0450 CW05   1A)	■	■	■
1200 mm (47 in) (617-9620 CW10   1A)	■	■	■

### 5 – 10 TON

Model (Part Number)	305	306	307	307.5	308	309	310
1200 mm (47 in) (618-0055 PO   1A)	■	■					
1500 mm (59 in) (621-0449 CW10   1A)	■	■					
1600 mm (63 in) (621-0447 PO   1A)	■	■					
1200 mm (47 in) (526-2515 PO   1A)			■	■	■	■	
1520 mm (60 in) (614-2445 PO   1A)			■	■	■	■	
1200 mm (47 in) (568-9143 PO   1A)							■
1500 mm (59 in) (614-2450 PO   1A)							■

**PO: Pin On**  
**CW05: CW05 Coupler**  
**CW10: CW10 Coupler**

Pin on directly to stick or usable with Pin Grabber style coupler.  
Requires machine to have a CW05 type coupler.  
Requires machine to have a CW10 type coupler.

**1A: First Auxiliary**

Requires first auxiliary hydraulics on machine to operate.

# MINI EXCAVATOR ATTACHMENTS COMPATIBILITY

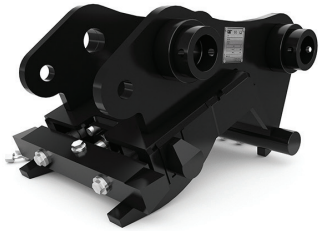


## Cold Planers

Cat Cold Planers are designed for small paving jobs in residential and commercial applications and are primarily used to economically restore asphalt and concrete surfaces. They are ideal for milling imperfections prior to resurfacing, removing deteriorated pavement, removing traffic lane stripes and jobs where the use of dedicated planers is limited. The Cat Cold Planers are designed for use on Cat Skid Steer Loaders, Compact Track Loaders, Compact Wheel Loaders and Backhoe Loaders.

### 5 – 10 TON

Model (Part Number)	305	306	307	307.5	308	309	310
PC35 (619-6535 TI   1A)	■	■	■	■	■	■	
PC45 (619-6545 TI   1A)			■	■	■	■	■



## Couplers – CW

CW Quick Couplers increase the utilization of an excavator by becoming an all-purpose tool carrier. Simply release one work tool attachment and pick up another in a matter of seconds. Available in hydraulic or manual (spindle) versions.

### 1 – 4 TON

Model (Part Number)	301.5	301.6	301.7	301.8	302	302.7	303	303.5	304
CW05 (525-4593 PO   DFI)	■	■	■	■	■				
CW05 (525-4594 PO   DFI)						■			
CW05 (525-4595 PO   DFI)							■	■	■
CW05 (525-4596 PO   DFI)	■	■	■	■	■				

### 3 – 10 TON

Model (Part Number)	302.7	303	303.5	304	305	306	306.5	307	307.5	308	309	310
CW05 (525-4597 PO   DFI)	■											
CW05 (525-4598 PO   DFI)		■	■	■								
CW10 (525-4611 PO   DFI)		■	■	■								
CW10 (525-4612 PO   DFI)								■	■	■	■	
CW10 (525-4613 PO   DFI)		■	■	■								
CW10 (525-4614 PO   DFI)				■	■	■	■					
CW10 (525-4615 PO   DFI)								■	■	■	■	
CW10 (542-5450 PO   DFI)												■

**TI: Tool Interface**  
**PO: Pin On**

Requires a mounting bracket to fit to machine.  
Pin on directly to stick or usable with Pin Grabber style coupler.

**1A: First Auxiliary**  
**DFI: Dedicated Factory Installed**

Requires first auxiliary hydraulics on machine to operate.  
Requires dedicated factory installed hydraulics to operate.

# MINI EXCAVATOR ATTACHMENTS COMPATIBILITY



## Couplers – Dual Lock™ Pin Grabber

Dual Lock Pin Grabber Couplers allow work tools to be changed quickly - improving overall production and increasing machine versatility.

### 3 – 10 TONS

Model (Part Number)	303	303.5	304	305	306	306.5	307	307.5	308	309	310
Pin Grabber (485-5300 PO   DFI)	■	■	■								
Pin Grabber (485-5301 PO   DFI)				■	■	■					
Pin Grabber (485-5302 PO   DFI)							■	■	■	■	
Pin Grabber (485-5306 PO   DFI)											■



## Couplers – S Type

S Type Couplers are an optimal design for a dedicated quick coupler solution. Low offset, pin grabber ability, and a wedge type locking system ensures a tight fit, no attachment play during use. It also creates the solution to exchange work tools among different platforms and brands.

### 3 – 10 TON

Model (Part Number)	302.7	303	303.5	304	305	305.5	306	306.5	307	307.5	308	309	310
S40 Pin Grabber (640-0025 PO   DFI)	■												
S40 Pin Grabber LCS (576-1205 PO   DFI)		■	■	■									
S40 Pin Grabber (576-1206 PO   DFI)					■	■	■	■					
S40 Pin Grabber LCS (576-1207 PO   DFI)					■	■	■	■					
S45 Pin Grabber LCS (576-1210 PO   DFI)										■	■	■	
S45 Pin Grabber LCS (576-1211 PO   DFI)													■
S50 Pin Grabber (576-1200 PO   DFI)									■	■	■	■	
S50 Pin Grabber LCS (576-1201 PO   DFI)									■	■	■	■	
S50 Pin Grabber (576-1202 PO   DFI)													■
S50 Pin Grabber LCS (576-1203 PO   DFI)													■

PO: Pin On  
LCS

Pin on directly to stick or usable with Pin Grabber style coupler.  
Locking Control System

DFI: Dedicated Factory Installed

Requires dedicated factory installed hydraulics to operate.

# MINI EXCAVATOR ATTACHMENTS COMPATIBILITY

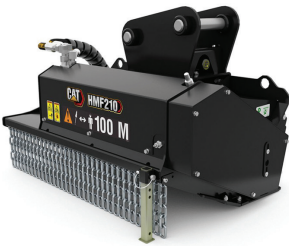


## Couplers – Tilting Dual Lock™ Pin Grabber

Tilting Dual Lock Pin Grabber Couplers allow work tools to be changed quickly, improving overall production and increasing machine versatility. The Tilting Dual Lock Coupler maintains a tight fit with an innovative wedge design. It can be used with compatible pin-on work tools and in front shovel mode with buckets. The Tilting Dual Lock Coupler also comes with a visible locking mechanism for added security.

### 5 – 10 TON

Model (Part Number)	305	306	306.5	307	307.5	308	309
Tilting Dual Lock Pin Grabber (485-5304 PO   DFI)	■	■	■				
Tilting Dual Lock Pin Grabber (485-5305 PO   DFI)				■	■	■	■



## Flail Mowers

Cat Flail Mowers for Mini Excavators are designed for high-performance cutting and mulching of vegetation and undergrowth from overgrown and forested terrain. Flail Mowers are ideal for environmental maintenance applications, such as mowing along ditches, fence rows and retention ponds and cleaning up high banks and slopes.

### 5 – 9 TON

Model (Part Number)	305	306	306.5	307	307.5	308	309
HMF110 (504-6010 PO   1A)	■	■	■				
HMF210 (504-6011 PO   1A)				■	■	■	■



## Multi-Purpose Grapples

Multi-Purpose Grapples are designed to allow maximum maneuverability with Cat Tiltrotators. The integrated bracket has a minimal offset to optimize performance. The Multi-Purpose Grapple works best in material handling applications where irregular surface materials are used, such as concrete pipe, curbs, trees, brush and other hardscape used in landscaping.

### 5 – 10 TON

Model (Part Number)	305	306	306.5	307	307.5	308	309	310
G206 (576-1230 TI   1A)	■	■	■					
G208 (576-1220 TI   1A)				■	■	■	■	■

**TI: Tool Interface**  
**PO: Pin On**

Requires a mounting bracket to fit to machine.  
Pin on directly to stick or usable with Pin Grabber style coupler.

**1A: First Auxiliary**  
**DFI: Dedicated Factory Installed**

Requires first auxiliary hydraulics on machine to operate.  
Requires dedicated factory installed hydraulics to operate.

# MINI EXCAVATOR ATTACHMENTS COMPATIBILITY



## Demolition and Sorting Grapples

Demolition & Sorting Grapples are designed for fast, productive material handling. Capable of high-volume, production loading and precise sorting, they enhance the productivity and efficiency of your operation. The grapples can handle anything from primary and secondary demolition to recycling to get the job done.

### 7 – 10 TON

Model (Part Number)	305	306	306.5	307	307.5	308	309	310
G306 (576-1250 TI   2A)	■	■	■					
G308 (576-1240 TI   2A)				■	■	■	■	■



## Hammers

Cat Hammers are high performance breakers, designed for maximum performance on demolition, construction and road work.

### 1 – 2 TON

Model (Part Number)	300.9D	300.9D VPS & HPU300	301.5	301.6	301.7	301.8	302	302.7
B1 (532-9101 TI   1A)			■	■	■	■	■	
B1s (532-9201 TI   1A)			■	■	■	■	■	
B1 Pin On (573-4711 PO   1A)	■		■					
B2 (532-9102 TI   1A)			■	■	■	■	■	■
B2s 532-9202 TI   1A)			■	■	■	■	■	■
B2 Pin On (576-5525* PO   1A)			■	■	■	■	■	
B2 Side Mount (576-5530* PO   1A)			■	■	■	■	■	

### 1 – 2 TON

Model (Part Number)	300.9D	301.5	301.6	301.7	301.8	302	302.7
B2 Side Mount (576-5540 PO   1A)		■	■	■	■	■	
H35s (561-2548 TI   1A)		■	■	■	■	■	
H45s (561-2549 TI   1A)		■	■	■	■	■	■

**PO: Pin On**  
**TI: Tool Interface**  
\* China Only

Pin on directly to stick or usable with Pin Grabber style coupler.  
Requires a mounting bracket to fit to machine.

**1A: First Auxiliary**  
**2A: Second Auxiliary**

Requires first auxiliary hydraulics on machine to operate.  
Requires second auxiliary hydraulics on machine to operate.

# MINI EXCAVATOR ATTACHMENTS COMPATIBILITY

## Hammers – continued

### 3 – 4 TON

Model (Part Number)	303	303.5	304
B2 (532-9102 TI   1A)	■	■	
B2s (532-9202 TI   1A)	■	■	
B4 (532-9104 TI   1A)			■
B4s (532-9204 TI   1A)			■
B4 Side Mount (532-9304 PO   1A)	■	■	■
B6 (532-9106 TI   1A)			■
B6s (532-9206 TI   1A)			■
H45s (561-2549 TI   1A)	■	■	
H55s (561-2551 TI   1A)			■

### 5 – 6 TON

Model (Part Number)	305	305.5	306	306.5
B4 (532-9104 TI   1A)	■	■		
B4s (532-9204 TI   1A)		■		
B6 (532-9106 TI   1A)	■	■	■	■
B6s (532-9206 TI   1A)			■	
B6 Side Mount (532-9306 PO   1A)	■	■	■	■
B8 (532-9108 TI   1A)			■	■
B8s (532-9208 TI   1A)			■	■
H55s (561-2551 TI   1A)	■	■		
H65s (561-2552 TI   1A)	■	■	■	■

### 7 – 10 TON

Model (Part Number)	307	307.5	308	309	310
B6 (532-9106 TI   1A)	■	■	■	■	
B6s (532-9206 TI   1A)	■	■	■	■	
B8 (532-9108 TI   1A)		■	■	■	
B8s (532-9208 TI   1A)		■	■	■	
B8 Side Mount (532-9308 PO   1A)	■	■	■	■	
B9 (532-9109 TI   1A)		■	■	■	■
B9s (532-9209 TI   1A)		■	■	■	■
H80s (561-2553 TI   1A)		■		■	
H95s (561-2555 TI   1A)	■	■	■	■	■

**PO: Pin On**  
**TI: Tool Interface**

Pin on directly to stick or usable with Pin Grabber style coupler.  
Requires a mounting bracket to fit to machine.

**1A: First Auxiliary**

Requires first auxiliary hydraulics on machine to operate.

# MINI EXCAVATOR ATTACHMENTS COMPATIBILITY



## Mobile Scrap & Demolition Shears

Steel-frame demolition and scrap processing are the starting points for metals recycling. Cat Scrap and Demolition Shears power through these applications, providing the production and reliability that keep your operation in the black. Available in sizes to fit Cat machines from skid-steers to large excavators.

### 5 – 9 TON

Model (Part Number)	305	306	306.5	307	307.5	308	309	310
S308 (583-8100 TI   2A)	■	■	■	■	■	■	■	■



## Mulchers

Cat Mulchers for Skid Steer Loaders and Compact Track Loaders are designed for high-performance cutting and mulching vegetation and undergrowth from forested terrain. The hydraulic mulcher reduces saplings, shrubs and trees into mulched material, making it ideal for environmental maintenance, such as creating fire lanes. Other applications include land reclamation, foliage removal from building construction sites, and shredding pruned material and organic waste for biomass production.

### 7 – 10 TON

Model (Part Number)	306	307	307.5	308	309	310
HM208 (504-6012 PO   1A)		■	■	■	■	■
HM210 (504-6013 PO   1A)		■	■	■	■	■
HM608 (646-4929 TI   1A)	■					
HM810 (646-4928 TI   1A)		■	■	■		■
HM912 (646-4927 TI   1A)					■	

**TI: Tool Interface**  
**PO: Pin On**

Requires a mounting bracket to fit to machine.  
Pin on directly to stick or usable with Pin Grabber style coupler.

**1A: First Auxiliary**  
**2A: Second Auxiliary**

Requires first auxiliary hydraulics on machine to operate.  
Requires second auxiliary hydraulics on machine to operate.

# MINI EXCAVATOR ATTACHMENTS COMPATIBILITY



## Thumbs – Pro Series Hydraulic

Pro Series Hydraulic Thumbs (link style) (Pro and Pro Plus models) offer the best load control and are rugged enough for demolition, handling rip rap and other heavy-duty tasks.

### 7 – 9 TON

Model (Part Number)	307	307.5	308	309
671 mm (26 in) 4 Teeth / 2 Tines (305-6744* PO   1A)	■	■	■	■
858 mm (34 in) 6 Teeth / 2 Tines (305-6745# PO   1A)	■	■	■	■



## Thumbs – Utility

Utility thumbs (no-link style) offer a cost-effective thumb design with hydraulic thumb control, combined with wide compatibility with machines, buckets and couplers.

### 1 – 2 TON

Model (Part Number)	301.5	301.6	301.7	301.8	302	302.7
292 mm (11 in) 5 Teeth / 2 Tines (555-8424 PO   1A)	■	■	■	■	■	
346 mm (14 in) 5 Teeth / 2 Tines (451-6380 PO   1A)						■

### 3 – 4 TON

Model (Part Number)	303	303.5	304
326 mm (13 in) 8 Teeth / 2 Tines (452-2740 PO   1A)	■	■	■

### 5 – 6 TON

Model (Part Number)	305	306	306.5
356 mm (14 in) 8 Teeth / 2 Tines (575-0496 PO   1A)	■	■	■

### 7 – 9 TON

Model (Part Number)	307	307.5	308	309
435 mm (17 in) 6 Teeth / 2 Tines (620-7656# PO   1A)	■	■	■	■
435 mm (17 in) 4 Teeth / 2 Tines (620-7655* PO   1A)	■	■	■	■

### 10 TON

Model (Part Number)	310
457 mm (18 in) 6 Teeth / 2 Tines (540-6735 PO   1A)	■

\* For use with pin-on buckets.

# For use with pin grabber coupler.

**PO: Pin On**

Pin on directly to stick or usable with Pin Grabber style coupler.

**1A: First Auxiliary**

Requires first auxiliary hydraulics on machine to operate.

# MINI EXCAVATOR ATTACHMENTS COMPATIBILITY



## Tiltrotators

Cat Tiltrotators for excavators provide 360-degree rotation and 40-degree tilting action side-to-side, allowing the machine to reach more work areas from a single position. The tiltrotator enables the operator to maneuver around posts, rocks, and other obstacles, as well as to reach along ditch edges more easily.

### 1 – 4 TON

Model (Part Number)	302.7 <sup>1</sup>	303 <sup>2</sup>	303.5 <sup>2</sup>	304 <sup>2</sup>
TRS4 (656-1440 S40-S40   1A)		■	■	■
TRS4 (656-1441 PO-S40   1A)		■	■	■
TRS4 (656-1442 PO-PG   1A)		■	■	■
TRS4 (656-1443 PO-S40   1A)	■			
TRS4 (656-1444 PO-PG   1A)	■			

### 5 – 6 TON

Model (Part Number)	305 <sup>3</sup>	306 <sup>3</sup>	306.5 <sup>3</sup>
TRS6 (656-1465 S40-S40   1A)	■	■	■
TRS6 (656-1466 PO-S40   1A)	■	■	
TRS6 (656-1467 PO-PG   1A)	■	■	

### 7 – 10 TON

Model (Part Number)	307.5 <sup>4</sup>	308 <sup>5</sup>	309 <sup>6</sup>	310 <sup>7</sup>
TRS8 (656-1512 PO-PG   1A)				■
TRS8 (656-1505 S45-S45   1A)	■	■	■	■
TRS8 (656-1506 PO-S45   1A)	■	■	■	
TRS8 (656-1507 PO-S45   1A)				■
TRS8 (656-1508 S50-S50   1A)	■	■	■	■
TRS8 (656-1509 PO-S50   1A)	■	■	■	
TRS8 (656-1510 PO-S50   1A)				■
TRS8 (656-1511 PO-PG   1A)	■	■	■	
TRS8 (656-1512 PO-PG   1A)				■

1. Compatible only with serial number prefixes CZ6 1 and up
2. Compatible only with serial number prefixes MY3 1 and up
3. Compatible only with serial number prefixes AX5 1 and up, 6G6 1 and up, 6W6 1 and up
4. Compatible only with serial number prefixes GW7 1 and up
5. Compatible only with serial number prefixes GG8 1 and up, GW8 1 and up
6. Compatible only with serial number prefixes GG8 1 and up, GW9 1 and up
7. Compatible only with serial number prefixes GWT 1 and up

**PO: Pin On**  
**PG: Pin Grabber**  
**S45: S45**

Pin on directly to stick or usable with Pin Grabber style coupler.  
Pin Grabber style coupler.  
Requires machine to have a S45 type coupler.

**1A: First Auxiliary**  
**S40: S40**

Requires first auxiliary hydraulics on machine to operate.  
Requires machine to have a S40 type coupler.

# MINI EXCAVATOR ATTACHMENTS COMPATIBILITY



## Vibratory Plate Compactors

Vibratory Plate Compactors are used for compacting soil, sand or gravel prior to pouring concrete or laying asphalt. They are also ideal for asphalt patch work. Their capabilities and lower investment and maintenance costs make them popular with pavers, general contractors and utility contractors in residential, commercial or industrial applications.

### 2 – 10 TON

Model (Part Number)	302.7	303	303.5	304	305	305.5	306	307	307.5	308	309	310
CVP16 (612-9616 TI   1A)	■	■	■	■	■		■					
CVP28 (612-9628 TI   1A)		■	■	■	■	■	■	■	■	■	■	
CVP40 (612-9640 TI   1A)							■	■	■	■	■	■
CVP55 (612-9655 TI   1A)								■	■	■	■	■

**TI: Tool Interface**

Requires a mounting bracket to fit to machine.

**1A: First Auxiliary**

Requires first auxiliary hydraulics on machine to operate.

# MINI EXCAVATOR ATTACHMENTS COMPATIBILITY