

BRUSHCUTTERS



Models

BR115
BR117, BR118, BR120
BR318
BR320

Machine Compatibility

216B3, 226D3, 232D3, 239D3, 249D3
236D3, 242D3, 246D3, 259D3, 262D3, 272D3, 272D3 XE, 279D3, 289D3, 299D3, 299D3 XE
226D3, 239D3, 242D3, 246D3, 259D3, 262D3, 272D3, 272D3 XE, 279D3, 289D3, 299D3, 299D3 XE
242D3, 246D3, 259D3, 262D3, 272D3, 272D3 XE, 279D3, 289D3, 299D3, 299D3 XE

Current machines listed. Machine model availability and attachment vary by region. Contact your local Cat dealer for exact compatibility and availability.



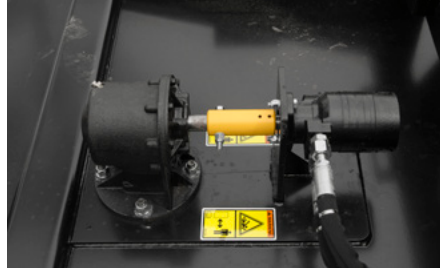
Cat® brushcutters are used for clearing brush and saplings from highway medians, utility easements, fence lines, pastures and other overgrown areas.

FEATURES



HIGH STRENGTH BLADES AND BALANCED BLADE CARRIERS

High strength blades easily cut through tough brush and saplings. Up-swept blade design lifts material for additional mulching action. Balanced blade carrier reduces vibration. Tapered design of blade carrier allows cutter to ride up over stumps and surfaces.



LONG LIFE MOTOR AND GEAR

Robust motor and gearbox design provide years of reliable service. Gearbox is a sealed design with precision machined and heat-treated gears. Shear pin provides safeguard against damage from hitting unseen debris.



MOTOR-PROTECTION GUARD

Motor-protection guard shields motor and gear box from debris. Guard is hinge mounted for easy access to motor and gearbox.



GALVANIZED COIL CHAINS

Galvanized coil chains (7.9 mm [5/16 in] proof) provide debris guarding in the front and rear areas to restrict flying debris and material.



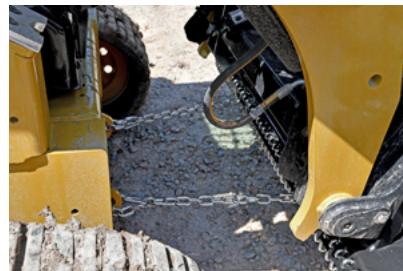
HEAVY DUTY SKIDS

Heavy-duty skids allow easy movement of the brushcutter through uneven terrain while maintaining stability of the work tool and machine.



TWO YEAR WARRANTY

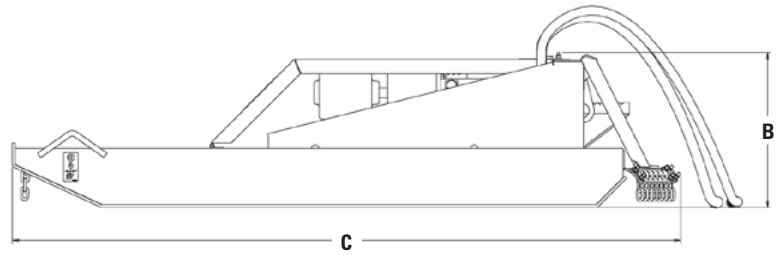
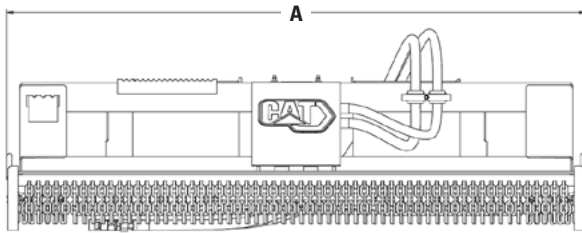
Standard two year warranty gives you peace of mind when purchasing a quality Cat brushcutter attachment.



LIFT RESTRICTION CHAINS

Lift restriction chains limit operating height of the brushcutter to reduce flying debris and blade damage.

SPECIFICATIONS



BRUSHCUTTERS

Model	BR115	BR117	BR118	BR120	BR318	BR320
A Overall Width – mm (in)	1575 (62)	1727 (68)	1880 (74)	2025 (80)	1880 (74)	2025 (80)
B Overall Height – mm (in)	542 (21.3)	542 (21.3)	542 (21.3)	542 (21.3)	542 (21.3)	542 (21.3)
C Overall Length – mm (in)	1854 (73)	2007 (79)	2159 (85)	2346 (92)	2159 (85)	2346 (92)
Cutting Width – mm (in)	1524 (60)	1676 (66)	1829 (72)	1981 (78)	1829 (72)	1981 (78)
Maximum Cutting Diameter – mm (in)	76 (3)	76 (3)	76 (3)	76 (3)	76 (3)	76 (3)
Weight – kg (lb)	426 (939)	462 (1,019)	496 (1,093)	527 (1,162)	502 (1,107)	533 (1,175)
Tip Speed – mpm (fpm)	3987-4821 (13,080-15,816)	2910-4442 (9,547-14,572)	3175-4845 (10,415-15,897)	3417-5246 (11,210-17,211)	3998-5198 (13,118-17,054)	4332-5631 (14,212-18,475)
Drive Shaft Torque – N·m (lb/ft)	152-233 (112-172)	217-329 (160-243)	217-329 (160-243)	217-329 (160-243)	297-554 (219-409)	297-554 (219-409)
Optimal Hydraulic Flow – l/min (gpm)	57-69 (15-18)	57-87 (15-23)	57-87 (15-23)	57-87 (15-23)	100-130 (26-34)	100-130 (26-34)
Optimal Hydraulic Pressure – bar (psi)	150-230 (2,176-3,340)	150-230 (2,176-3,340)	150-230 (2,176-3,340)	150-230 (2,176-3,340)	150-280 (2,176-4,065)	150-280 (2,176-4,065)
Required Hydraulics	Standard Flow	Standard Flow	Standard Flow	Standard Flow	High Flow	High Flow XPS





For more complete information on Cat products, dealer services and industry solutions, visit us on the web at www.cat.com

AEHQ8438 (03-2023)
(Global)

© 2023 Caterpillar. All Rights Reserved.

Materials and specifications are subject to change without notice. Featured machines in photos may include additional equipment. See your Cat dealer for available options.

CAT, CATERPILLAR, LET'S DO THE WORK, their respective logos, "Caterpillar Corporate Yellow," the "Power Edge" and Cat "Modern Hex" trade dress as well as corporate and product identity used herein, are trademarks of Caterpillar and may not be used without permission.
www.cat.com www.caterpillar.com

