

RM600 | RM800

RECLAIMER / STABILIZERS



RM600

Gross Power*	470 kW (630 hp)
Operating Weight	32 430 kg (71,496 lb)
Cutting / Mixing Width	2438 mm (96 in)

RM800

Gross Power**	576 kW (772 hp)
Operating Weight	33 135 kg (73,050 lb)
Cutting / Mixing Width	2438 mm (96 in)

* Cat® RM600 meets Brazil MAR-1 emissions standards, equivalent to U.S. EPA Tier 3 and EU Stage IIIA.
** Cat RM800 is equivalent to U.S. EPA Tier 2 and EU Stage II.



RECLAIM PRODUCTIVITY

Machine features to help deliver superior mix quality while providing the versatility you need.

- + MAINTAIN PRECISION WITH EASY-TO-USE CONTROLS AND ADVANCED CUTTING FEATURES
- + OUTSTANDING MANEUVERABILITY AND TRACTION FOR A VARIETY OF APPLICATIONS AND TERRAIN
- + SPRAY SYSTEMS AND CONFIGURABLE ROTOR TO MATCH JOB SPECIFICATIONS



THE NEW CAT[®] RM600 & RM800

RECLAIMER / STABILIZERS

Ready to tackle the toughest road reclamation and stabilization projects, the Cat[®] RM600 and RM800 Reclaimer/Stabilizers offer a comfortable cab with controls that help you stay productive all day long.



POWER, PERFORMANCE AND PRODUCTIVITY

Optimum weight distribution with features like All-Wheel Drive and a powerful Cat engine maximize cutting and mixing performance.

FEATURE-FILLED OPERATOR ENVIRONMENT

The ergonomic operator station provides excellent visibility and is equipped with features to simplify operation.

HIGHLY VERSATILE

Designed to work in a variety of applications and terrain with multiple rotor configurations and exceptional maneuverability.



POWER AND PERFORMANCE

BUILT-IN FEATURES TO MAXIMIZE EFFICIENCY

ENGINE AND COOLING SYSTEM

The RM600 and RM800 feature a Cat C18 engine that meets regional emission standards and delivers the power needed to help you achieve production goals.

Engine Idle Speed Management helps maximize fuel efficiency and reduce greenhouse gas emissions by elevating engine speed to an intermediate idle to complete specific tasks and returning to low idle when finished.

A robust cooling system with on-demand variable speed fans draw ambient air from the upper sides of the machine through the cooling package. The exhaust air exits from the rear of the machine at an upward angle, directed away from the machine and the ground.

The reversible cooling fans periodically perform reverse cycles to expel loose dust to keep the engine running efficiently and extend cleaning intervals.

ADVANCED CUTTING FEATURES

Automatic Load Control and advanced electronic controls deliver ideal mix quality when working in either forward or reverse. Automatic Load Control helps you save fuel and reduces greenhouse gas emissions by automatically matching propel speed to engine load for maximum production at peak efficiency.

The float feature offers the ability to select the desired down pressure for the rear rotor chamber door, simplifying operation.

An easy-to-read indicator on the touch screen display keeps you informed of the front and rear mixing chamber door positions so you can instantly modify material gradation when necessary.

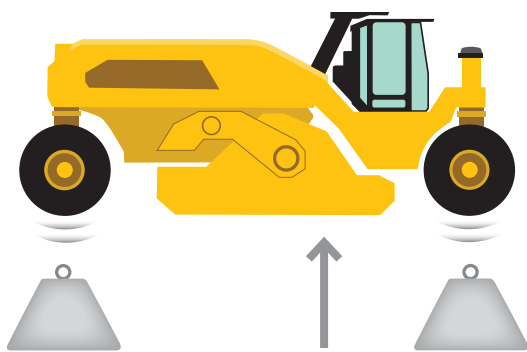
The Exit and Return-to-cut features save time and maintain consistency with the simple tap of a button.

OPERATE WITH CONFIDENCE



MAXIMUM TRACTION

The All-wheel Drive system continually monitors and balances hydraulic pressure at each wheel for maximum traction. Four independent pumps deliver dedicated flow to each wheel motor, providing efficient power for traction ensuring the machine propels in the most extreme conditions.



WEIGHT DISTRIBUTION POINT
ENHANCES OPERATOR COMFORT

EXCEPTIONAL STABILITY

The RM600 and RM800 are highly maneuverable and offer four steering modes. With wheels positioned on the corners of the chassis and an overall length of 8.7 m (28.6 ft), these machines are capable of a 3.1 m (10.1 ft) inside turning radius. Additionally, machine weight distribution is balanced over the front of the rotor providing a comfortable ride when cutting.



LEVEL UP

When working on uneven terrain, the adjustable height machine design enhances stability and precision by offering up to 14% (8 degrees) of positive or negative slope on either side. Being able to raise the machine helps operators maintain traction when working in challenging soil stabilization applications or when maneuvering on the job site.

DESIGNED FOR SIMPLE OPERATION

Push-button start. Touchscreen displays. Joystick and hand-wheel steering. Operators have a comfortable work environment with settings, controls and camera views at their fingertips. The sliding cab and rotating seat provide the operator with an unimpeded view of the cutting path on either side of the machine. Fore, aft and mixing chamber door cameras are standard to help increase visibility and monitor mix quality. Adding side cameras can enhance obstacle avoidance and job site safety.



PUSH TO START

Keyless push-button engine start can add security and convenience by using Operator ID codes to recall saved operator preferences and profiles upon login. Simply enter the ID code and push the button to start the engine. You can skip the ID codes when using the optional Bluetooth® key fob.



EASY TO OPERATE

Simple controls are easy-to-learn, ergonomically located and grouped by function for quick and easy access. Hand-wheel steering delivers precise machine control and all rotor controls are conveniently located on the right hand console and joystick.



DESIGNED FOR THE OPERATOR

A standard FOPS cab with heating and air conditioning provides a comfortable work environment and protects the operator from the elements. The heated, air-ride suspension seat adjusts for optimal operator comfort.



EXCEPTIONAL VISIBILITY

Sight lines are optimized with the full left-to-right sliding cab and angled glass panels provide exceptional views to the rotor chamber and wheel edges. The seat rotates 90 degrees in either direction allowing the operator to find the most comfortable spot for maximum visibility.



EXTRA EYES

Performance and safety can be augmented with standard and optional cameras that are viewed on large, in-cab displays. Fore and aft visibility is enhanced with standard High Definition cameras with guidance lines and operators can view gradation results using the front and rear chamber door cameras. Optional side view cameras provide visibility for obstacle avoidance and enhance safety.



TAKE CONTROL

Easily match machine functions with project specifications through the 25 cm (10 in) color touch screen displays and push button controls. Hand-wheel and joystick steering deliver precise maneuverability. Controls are ergonomically located and grouped by function for quick and easy access.





SYSTEM K ROTOR

**MORE PRODUCTION,
LESS MAINTENANCE**

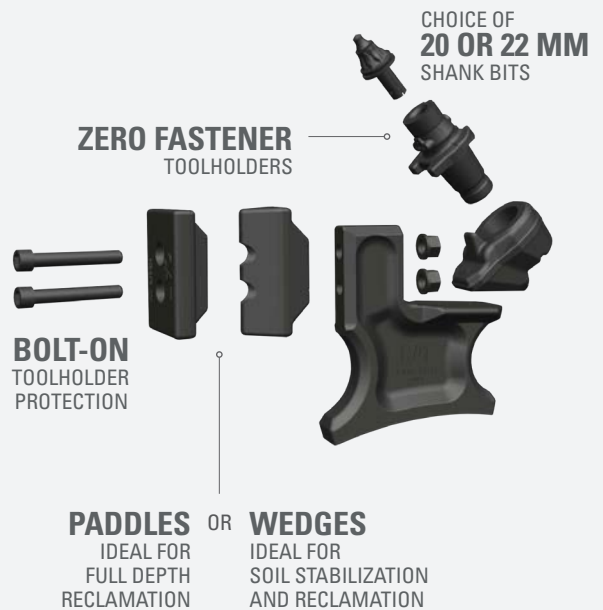
Configure the System K rotor for the type of work you are doing. A fastener-free, quick-release toolholder design lets you spend less time doing tool changes so you can spend more time in the dirt.

HIGH PERFORMANCE FEATURES

The RM600 and RM800 are equipped with a System K rotor specifically designed for full depth reclamation and soil stabilization applications, using proven toolholder and base block components from our cold planer System K rotors. Wear-resistant, cast, and forged steel components withstand tough, high-power applications delivering superior material quality on a variety of projects.

**GET TO KNOW THE
SYSTEM K ROTOR**

For reclaimer/stabilizers



ONE ROTOR, MORE OPTIONS

The System K rotor can be configured with bolt-on Paddle or Wedge toolholder protection that can be rotated 180° for extra life. Paddles provide additional material sizing in full depth reclamation applications and wedges reduce drag in soil stabilization and reclamation applications. The 208 tools can be fitted with 20 mm or 22 mm shank bits and have been precisely placed on the rotor for ideal material sizing and homogeneous mixing results.

Triple-tree cutting bit placement on rotor ends cleans up loose material and reduces wear on the rotor caused by maneuvering in the cut.

FASTER MAINTENANCE

Quick release conical toolholders feature a tapered dual-retention design to secure toolholders in place without a setscrew or bolt, speeding up replacement and eliminating the need for fasteners, torquing or periodic maintenance before replacement. The anti-rotating toolholder ensures proper position to prevent wear on the blocks and holders and offer multiple methods for bit removal. An on-board compressed air system powers pneumatic tools to speed up service time.

Bolt-on toolholder protection, endring segments and endring wear protection plates eliminate the need for grinding and welding to simplify reconditioning.

CUTTING BITS

Choosing the right cutting bit for your application can optimize the efficiency of the machine, resulting in more production with ideal material sizing and mixing quality. These charts identify which cutting bits are recommended for common applications.

For additional cutting bit offerings and alternatives, consult your local Cat dealer.



DESCRIPTION	Heavy Duty (Higher Carbide Content)	Higher Impact (Valve Seat Tip)	Light Duty	Higher Impact
SHANK SIZE	20 mm	20 mm	20 mm	22 mm
PART NUMBER	561-8135	564-1260	578-4416	533-5760

DURABILITY YOU EXPECT

RM600 and RM800 reclaimer/stabilizers cut a maximum of 508 mm (20 in) deep and are capable of bi-directional cutting. A robust rotor drive system utilizes components common with Cat cold planers and the belt drive provides clearance on the right-hand side of the machine for flush cutting. Rotor depth guides and visual indicator plates inform ground personnel of the rotor position at various depths for avoiding obstacles.

LONG WEAR LIFE

A thick, durable, high-strength steel variable volume cutting chamber is designed for long wear life and increases or decreases volume with depth of cut for better mixing. The hydraulically actuated, heavy-duty dry clutch, two high tensile strength six-rib drive belts, and hydraulic belt tensioner are adjustment free.

SELECT ROTOR SPEEDS “ON THE FLY”

The RM600 and RM800 offer six rotor speeds that are electronically selectable without leaving your seat. A 2-speed rotor gearbox features low and high ranges. Regardless of the gearbox speed range, you have your choice of three speeds that can be changed “on the fly” with no need to stop work.

RM800 offers a total of 12 rotor speeds. Access to the additional six speeds requires a manual low/high pulley position change. Regardless of pulley position, the operator can access six rotor speeds from the operator station.



ENHANCE CAPABILITIES WITH OPTIONAL SPRAY SYSTEMS



Water and emulsion additive systems ensure mix design specifications are met. A computerized metering system accurately monitors the application rate of additives for precise distribution. Using the touch screen display in the cab, operators can turn spray nozzles on or off to customize spraying width and easily set up the spray systems for the delivery of liquid additives according to specifications:

- + Manual or automatic
- + Volume per minute
- + Volume per m² (yd²)
- + Percent of material density

Spray bars conveniently slide out on either side for inspection, cleaning and service. An optional push bar is available.

WATER SPRAY SYSTEM

The Water Spray System automates the addition of metered water to the mixing chamber, allowing the machine to easily mix the proper measured amount to the materials. It provides an infinitely variable volume capacity of 30-1900 liters (8-500 gallons) per minute with nozzles that provide an optimal spray pattern at high, medium and low flow ranges. For water use only—not for use with emulsions.

EMULSION SPRAY SYSTEM

The Emulsion Spray System is capable of delivering bitumen emulsion or water and automates the addition of metered emulsion to the mixing chamber, allowing the machine to easily mix the proper measured amount to the materials. This pump unit provides an infinitely variable volume capacity of 30-850 liters (8-225 gallons) per minute.

The system can recirculate material to maintain temperature when idling or to flush the system during clean out. When completing an application, a clean out feature purges excess fluid back to the truck or other receptacle. Self-cleaning nozzles keep maintenance at a minimum.



EASY SERVICE TO MAXIMIZE UPTIME AND PRODUCTION

The RM600 and RM800 are designed with safe, secure, walk-in access to routine service items behind the cab. Removable panels provide additional access to the engine and cooling system. Extended maintenance intervals not only reduce downtime but decrease the amount of fluid and filters that are replaced over the life of the machine, reducing owning and operating costs. Built-in diagnostics monitor machine systems and alert the operator of performance issues and provide troubleshooting information. Your Cat dealer is ready to help with service options and convenient parts availability for both the engine and your machine.

EASY ROTOR SERVICE

The rotor chamber opens wide and optional hydraulically-powered rotor turning with a control pendant powers the rotor in either direction during maintenance. Easily change out triple-tree components using the access door on the sides of the rotor chamber. An optional magnetic base work light can be placed exactly where needed to illuminate the work area.

COMPRESSED AIR SYSTEM

A standard compressed air system with two access points speeds up rotor bit changes by powering pneumatic tools and can be used for general machine cleaning. A lockable rotor service switch inhibits any machine function so the engine can safely run to supply compressed air when servicing the rotor.

GROUND LEVEL CONTROLS

Controls located at ground level next to the operator access ladder adjust machine height, rotor height and rotor chamber doors for service. When using the emulsion system, activating the clean out switch reverses the pump to purge or clean out the system.

CAT LINK TECHNOLOGY

TAKES THE GUESSWORK OUT OF MANAGING YOUR EQUIPMENT

CAT LINK telematics help take the complexity out of managing your equipment and job sites by gathering data generated from your machines, materials, and people – delivering it to you in customizable formats.



CAT PRODUCT LINK™

Product Link™ collects data automatically from your assets – any type and any brand. Information such as location, hours, fuel usage, productivity, idle time, maintenance alerts, diagnostic codes, and machine health can be viewed online through web and mobile applications.

VISIONLINK®

Access product data anytime, anywhere with VisionLink® and use it to make informed decisions that boost productivity, lower costs, simplify maintenance, and improve safety and security on your job site. With different subscription level options, your Cat dealer can help you configure exactly what you need to connect your fleet and manage your business, without paying for extras you don't want. Subscriptions are available for cellular and/or satellite-based reporting.



REMOTE SERVICES

Remote Troubleshoot allows your Cat dealer to perform diagnostic testing on your connected machine remotely, pinpointing potential issues while the machine is in operation. If a service visit is required, Remote Troubleshoot ensures the technician arrives with the correct parts and tools the first time, eliminating the need for additional trips, saving you time and money.

Remote Flash updates on-board software without a technician being present, reducing time taken for updating by as much as 50%. Minimize downtime by initiating updates when convenient to keep your assets running with maximum efficiency.

The **Cat App** helps you manage your assets right from your smart phone. Track information such as fleet location or hours, receive critical alerts for required maintenance, and request service from your local Cat dealer.

TECHNICAL SPECIFICATIONS

POWERTRAIN

RM600		
Engine Model	Cat® C18	
Cylinders	6	
Emissions	Brazil MAR-1, equivalent to U.S. EPA Tier 3 and EU Stage IIIA	
Gross Power – SAE J1995:2014	470 kW	630 hp
Engine Power – ISO 14396:2002	464 kW	622 hp
RM800		
Engine Model	Cat C18 Twin Turbo	
Cylinders	6	
Emissions	U.S. EPA Tier 2, EU Stage II equivalent	
Gross Power – SAE J1995:2014	576 kW	772 hp
Engine Power – ISO 14396:2002	569 kW	763 hp
Maximum Operating Speed	56 m/min	184 ft/min
Maximum Travel Speed	12.1 km/h	7.5 mph
Propel System	All-Wheel Drive	

MACHINE WEIGHT

RM600		
Operating*	32 430 kg	71,496 lb
Maximum**	34 648 kg	76,386 lb
RM800		
Operating*	33 135 kg	73,050 lb
Maximum**	35 352 kg	77,938 lb

* Base machine, no options, ROPS, cab, coolant, lubricants, 50% full fuel tank, 50% full water tank and 75 kg (165 lb) operator.

** Base machine, all options, ROPS, cab, coolant, lubricants, full fuel tank, full water tank and 75 kg (165 lb) operator.

CUTTING SYSTEM

Rotor Drive	Belt	
Cutting Width	2438 mm	96 in
Maximum Cutting Depth	508 mm	20 in
Number of Cutting Tools	208	
Tip Diameter	1450 mm	57.1 in
Tool Spacing	15 mm	0.59 in
Tool Tip Height	300 mm	11.8 in
Flush Cut	Right Hand Side	

RM600 ROTOR SPEEDS (RPM)

Rotor Gearbox Speed	Engine Speed	Rotor Speed
Low	1	101
	2	118
	3	135
High	1	150
	2	175
	3	200

SERVICE REFILL CAPACITIES

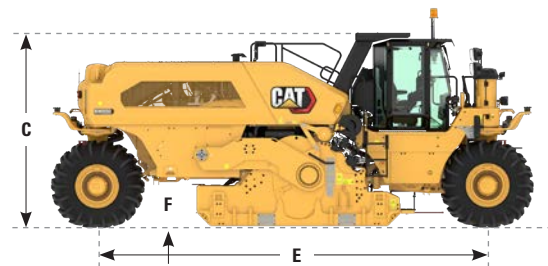
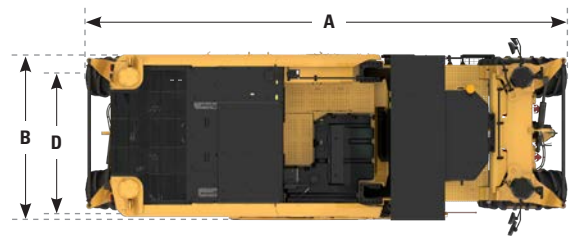
Fuel Tank	1230 L	325 gal
Cooling System	99 L	26.1 gal
Engine Oil	68 L	18 gal
Hydraulic Oil	225 L	59.4 gal
Washdown Water Tank	454 L	120 gal
DEF Tank (RM600)	47 L	12.4 gal

SPRAY SYSTEMS

Water Spray System – Flow Rate	30-1900 lpm	8-500 gpm
Emulsion Spray System – Flow Rate	30-850 lpm	8-225 gpm

DIMENSIONS

A Overall Length	8.72 m	28.61 ft
B Overall Width	3.0 m	9.8 ft
C Height at ROPS	3.5 m	11.5 ft
D Cutting Width	2438 mm	96 ft
E Wheelbase	7.05 m	23.13 ft
F Ground Clearance	506 mm	19.9 in
Inside Turning Radius (minimum)	3.09 m	10.14 ft
Outside Turning Radius (maximum)	6.96 m	22.83 ft
Maximum Cross Slope	14% (8 degrees)	



RM800 ROTOR SPEEDS (RPM)

Rotor Gearbox Speed	Engine Speed	Low Pulley Position	High Pulley Position
Low	1	97	120
	2	103	128
	3	109	135
High	1	144	179
	2	153	190
	3	162	201

STANDARD & OPTIONAL EQUIPMENT

Standard and optional equipment may vary. Consult your Cat dealer for details.

OPERATOR ENVIRONMENT	STANDARD	OPTIONAL
Adjustable armrests	●	
Air-ride, heated suspension seat	●	
180° rotating operating station	●	
Audio-ready with speakers	●	
Full width sliding cab with heat and air conditioning	●	
Push button start	●	
High visibility retractable seat belt	●	
On-screen steering guides	●	
Color touch screen displays (2)	●	
12-volt and USB power ports	●	

POWERTRAIN	STANDARD	OPTIONAL
Dual element air cleaner with pre-cleaner	●	
Extended life coolant with protection to -37° C (-35° F)	●	
Auto-reversing, on-demand cooling fan	●	
Engine idle speed management	●	
Automatic load control	●	
Four steering modes	●	
All-Wheel Drive	●	
2-speed planetary gearbox	●	
Electronic differential	●	
Bio-friendly hydraulic oil		○
CE certificate		○

SERVICE AND MAINTENANCE	STANDARD	OPTIONAL
Cat Product Link™	●	
Remote Flash	●	
Remote Troubleshoot	●	
Remote access drains	●	
Ports for Scheduled Oil Sampling (S•O•S SM)	●	
Fluid level sight gauges	●	
Service light receptacles	●	
Air compressor	●	
Lockable storage	●	
Bit bucket tray	●	
Fast fill fuel system		○
Hydraulically powered rotor turning with pendant		○
High pressure washdown system		○
Magnetic service light		○
Pneumatic bit removal tools		○

ELECTRICAL SYSTEM	STANDARD	OPTIONAL
150 amp alternator	●	
24-volt charging system	●	
Automotive-type fuse system	●	
Remote start/charge receptacle	●	
1000 CCA maintenance-free batteries (4)	●	

SPRAY SYSTEMS	STANDARD	OPTIONAL
Water spray system		○
Emulsion spray system		○
Push bar		○

ROTOR DRIVE SYSTEM	STANDARD	OPTIONAL
Electronic driveline protection	●	
Automatic depth control	●	
Hydraulically-controlled dry clutch	●	
Six rotor speeds (RM600)	●	
Twelve rotor speeds (RM800)	●	
Variable volume mixing chamber	●	
System K rotor	●	
Toolholder protection – Flat paddle		○
Toolholder protection – Wedge		○
Toolholder – 20 mm shank bits		○
Toolholder – 22 mm shank bits		○

SAFETY AND SECURITY	STANDARD	OPTIONAL
Back-up alarm	●	
Ground level emergency shutdown switches (4)	●	
Horn (front and rear)	●	
ROPS	●	
Platform handrails and guardrails	●	
Folding rear view mirrors	●	
Illuminated access ladder	●	
Operator ID profiles	●	
Bluetooth key fob		○
LED working lights	●	
LED roading lights		○
Folding LED safety beacon		○
Front and rear facing cameras	●	
Front and rear rotor chamber door cameras	●	
Folding side view cameras (2)		○



For more complete information on Cat products, dealer services and industry solutions, visit us on the web at www.cat.com

QEHQ3149 (02/2023)
Build Number: 01A

© 2023 Caterpillar. All Rights Reserved.

VisionLink is a trademark of Trimble Navigation Limited, registered in the United States and in other countries.

Materials and specifications are subject to change without notice. Featured machines in photos may include additional equipment. See your Cat dealer for available options.

CAT, CATERPILLAR, LET'S DO THE WORK, their respective logos, "Caterpillar Corporate Yellow", the "Power Edge" and Cat "Modern Hex" trade dress as well as corporate and product identity used herein, are trademarks of Caterpillar and may not be used without permission.

www.cat.com www.caterpillar.com

