

RM600 | RM800

RECLAIMER / STABILIZERS



RM600*

Gross Power (SAE J1995)
Operating Weight
Cutting / Mixing Width

475 kW (637 hp)
33 530 kg (73,921 lb)
2.44 m (8 ft)

RM800**

Gross Power (SAE J1995)
Operating Weight
Cutting / Mixing Width

601 kW (806 hp)
33 378 kg (73,586 lb)
2.44 m (8 ft)

* RM600 meets U.S. EPA Tier 4 Final, EU Stage V, and Korea Stage V emissions standards.

** RM800 meets U.S. EPA Tier 4 Final and EU Stage V emissions standards.



RM600 & RM800

RECLAIMERS / STABILIZERS

Ready to tackle the toughest road reclamation and stabilization projects, the Cat® RM600 and RM800 Reclaimer/Stabilizers offer a comfortable cab with controls that help you stay productive all day long.



RECLAIM PRODUCTIVITY

Machine features to help deliver mix quality while providing the versatility you need.

- + MAINTAIN PRECISION WITH EASY-TO-USE CONTROLS AND ADVANCED CUTTING FEATURES
- + MANEUVERABILITY AND TRACTION FOR A VARIETY OF APPLICATIONS AND TERRAIN
- + SPRAY SYSTEMS AND ROTOR DESIGNED TO MATCH JOB SPECIFICATIONS



POWER, PERFORMANCE AND PRODUCTIVITY

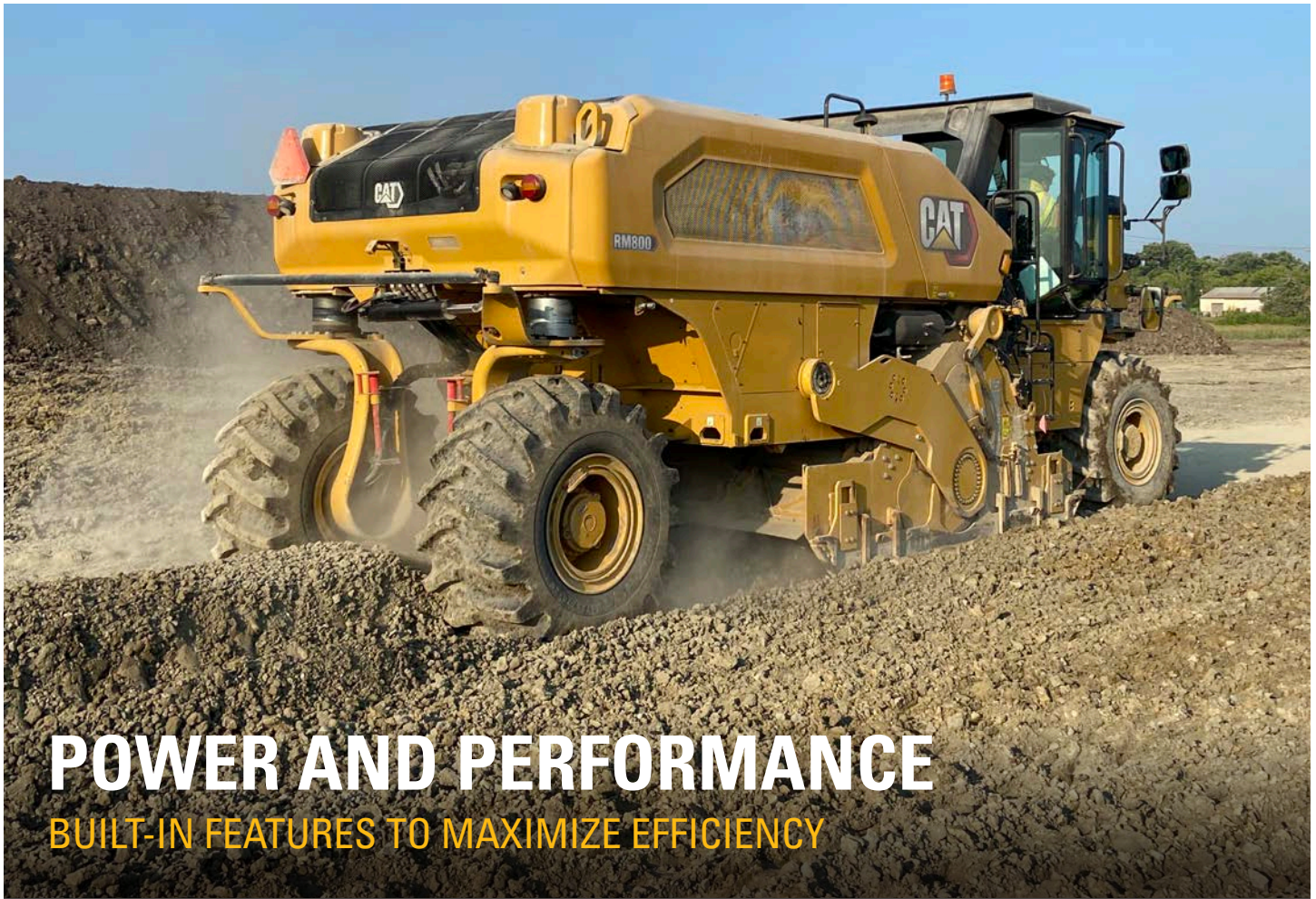
Optimum weight distribution with features like All-Wheel Drive and a powerful Cat engine aim to maximize cutting and mixing performance.

FEATURE-FILLED OPERATOR ENVIRONMENT

The ergonomic operator station is designed to provide maximum visibility and is equipped with features to help simplify operation.

HIGHLY VERSATILE

Engineered to be highly maneuverable and ideally suited to work in a variety of applications and terrain with a Cat System K rotor designed to deliver quality material.



POWER AND PERFORMANCE

BUILT-IN FEATURES TO MAXIMIZE EFFICIENCY

CAT® ENGINE

The RM600 and RM800 are powered by a Cat C18 6-cylinder engine that meets regional emission standards. Cat machine systems are designed to match the Cat engine, with a focus on maximizing engine life. Our engines feature Cat electronics, fuel injection, and air-management systems, applying proven technology to help you achieve productivity goals.

Engine Idle Speed Management helps maximize fuel efficiency by elevating engine speed to an intermediate idle to complete specific tasks and returning to low idle when finished.

COOLING EFFICIENCY

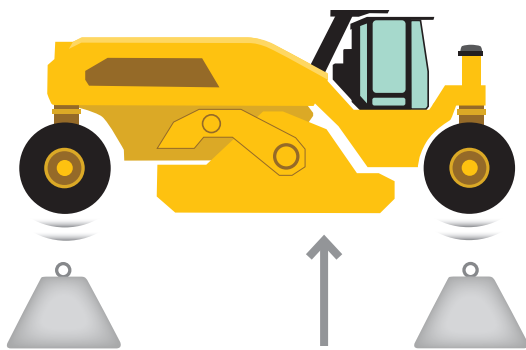
Robust on-demand, variable-speed fans provide cool air intake to help maximize fuel efficiency and minimize airborne dust on the jobsite. Ambient air is drawn directly into the cooling package and out the rear of the machine at an upward angle, directed away from the machine and the ground. The fans automatically run cycles in reverse to prevent dust and debris from building up and blocking air flow. Removing built-up material helps keep the system running efficiently and extends cleaning and maintenance intervals.

OPERATE WITH CONFIDENCE



DESIGNED FOR MAXIMUM TRACTION

The All-wheel Drive system continually monitors and balances hydraulic pressure at each wheel to maximize traction. Four independent pumps deliver dedicated flow to each wheel motor, providing efficient power to propel the machine when operating in deep soil conditions.



WEIGHT DISTRIBUTION POINT
ENHANCES OPERATOR COMFORT AND
TRACTION PERFORMANCE

STABLE AND MANEUVERABLE

The RM600 and RM800 are highly maneuverable and offer four steering modes. With wheels positioned on the corners of the chassis and an overall length of 8.7 m (28.6 ft), these machines are capable of a 3.1 m (10.1 ft) inside turning radius. Machine weight distribution is evenly balanced over the front of the rotor to provide a comfortable ride when cutting and enhance traction performance.



LEVEL UP

When working on uneven terrain, raise or lower either side of the machine for up to 14% (8 degrees) of slope. Maintain your desired setting automatically by using Slope Control. Being able to raise the machine helps operators maintain traction when working in challenging soil stabilization applications or when maneuvering on the job site.

DESIGNED FOR **SIMPLE OPERATION**

The purpose-built cab is designed so everything is within reach and within view, to maximize comfort and productivity. A quiet and spacious operating environment helps reduce the fatigue, stresses, sounds, and temperatures of a demanding job.



DESIGNED FOR THE OPERATOR

A standard FOPS cab with heating and air conditioning provides a comfortable work environment and protects the operator from the elements. The heated, air-ride suspension seat adjusts for optimal operator comfort.



PUSH TO START

Keyless push-button engine start can add security and convenience using Operator ID codes to recall saved operator preferences and profiles upon login. Simply enter the ID code and push the button to start the engine. You can skip the ID codes by using the optional Bluetooth® key fob.



TAKE CONTROL

Easily match machine functions with gradation specifications through the 25 cm (10 in) color touch screen displays and push button controls. Hand-wheel and joystick steering assist in delivering precise maneuverability.



EASY TO OPERATE

Controls are simple, easy-to-learn, ergonomically located and grouped by function for quick and easy access. The most-used functions during operation are conveniently located on the joystick.



COMFORTABLE VISIBILITY

A full left-to-right sliding cab with floor-to-ceiling glass panels provides optimal sight lines to the rotor chamber and wheel edges on either side of the machine. The seat rotates 90 degrees in both directions allowing operators to find the most comfortable position for visibility.



EXTRA EYES

High-definition remote cameras augment performance and safety, while assisting obstacle avoidance. Cameras are viewed on large, in-cab displays. Front and rear facing cameras are standard with adjustable indicators to guide the operator, as well as chamber door cameras to aid in monitoring mix quality. Optional side cameras are available for additional visibility.



BUILT-IN FEATURES

TO HELP MANAGE MIX QUALITY

STAY INFORMED

An easy-to-read indicator on the touch screen display keeps the operator informed of the front and rear mixing chamber door positions so they can instantly modify material gradation when necessary. The float feature offers the ability to select the desired down pressure for the rear rotor chamber door, simplifying operation.

CONSISTENT RESULTS

The Exit and Return-to-cut features save time and maintain consistency with the simple tap of a button. This allows operators to save and recall rotor depth and machine settings when moving from one cut to another.

ADDED EFFICIENCY

Features like Automatic Load Control and advanced electronic controls aid in delivering ideal mix quality when working in either forward or reverse. Automatic Load Control monitors demand on the engine and adjusts propel speed to help maintain maximum productivity.



SYSTEM K ROTOR

MORE PRODUCTION, LESS MAINTENANCE

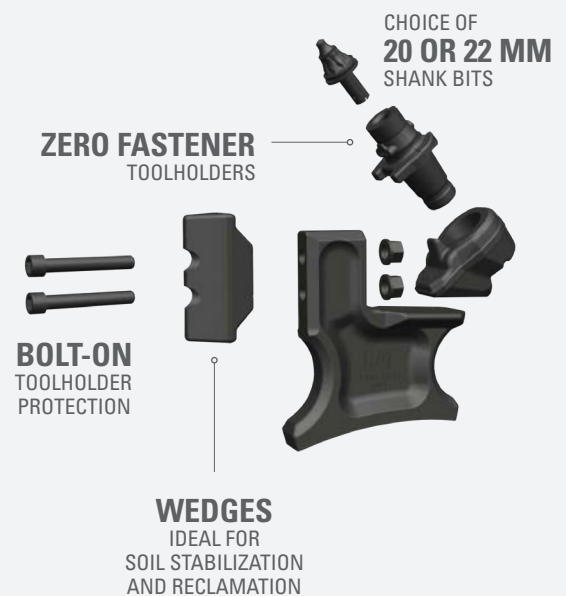
The System K rotor is designed for the road reclamation and soil stabilization work that you do. A fastener-free, quick-release toolholder design lets you spend less time doing tool changes so you can spend more time in the dirt.

HIGH-PERFORMANCE FEATURES

The RM600 and RM800 are equipped with a System K rotor specifically designed for full depth reclamation and soil stabilization applications, using proven toolholder and base block components from our cold planer System K rotors. Wear-resistant, cast, and forged steel components withstand tough, high-power applications delivering impressive material quality on a variety of projects.

GET TO KNOW THE SYSTEM K ROTOR

FOR ROAD RECLAIMERS / SOIL STABILIZERS



ONE ROTOR, MULTIPLE APPLICATIONS

The System K rotor is configured with wedge-shaped toolholder protection that can be rotated 180° for extra life. Wedges are engineered to easily cut through asphalt or soil. The 208 tools can be fitted with 20 mm or 22 mm shank bits and have been precisely placed on the rotor for ideal material sizing and homogeneous mixing results.

Triple-tree cutting bit placement on rotor ends cleans up loose material and reduces wear on the rotor caused by maneuvering in the cut.

DESIGNED FOR FAST MAINTENANCE

Quick-release conical toolholders feature a tapered, dual-retention design to secure toolholders in place without a setscrew or bolt, speeding up replacement and eliminating the need for fasteners, torquing or periodic maintenance before replacement. The anti-rotating toolholder maintains position and offers multiple methods for bit removal. An on-board compressed air system powers pneumatic tools to speed up service time.

Bolt-on toolholder protection, endring segments and endring wear protection plates eliminate the need for grinding and welding to simplify reconditioning.

CUTTING BITS

Choosing the right cutting bit for your application can optimize the efficiency of the machine, resulting in more production with ideal material sizing and mixing quality. This chart identifies cutting bits that are recommended for common applications. For additional cutting bit offerings and alternatives, consult your local Cat dealer.



DESCRIPTION	Heavy Duty (Higher Carbide Content)	Higher Impact (Valve Seat Tip)	Light Duty	Higher Impact
SHANK SIZE	20 mm	20 mm	20 mm	22 mm
PART NUMBER	561-8135	564-1260	578-4416	533-5760

DURABILITY YOU EXPECT

RM600 and RM800 reclaimer/stabilizers cut a maximum of 508 mm (20 in) deep and are capable of bi-directional cutting. A robust rotor drive system utilizes components common with Cat cold planers and the belt drive provides clearance on the right-hand side of the machine for flush cutting. Rotor depth guides and visual indicator plates inform ground personnel of the rotor position at various depths for avoiding obstacles.

LONG WEAR LIFE

A thick, durable, high-strength steel variable-volume cutting chamber is designed for long wear life and increases or decreases volume with depth of cut for better mixing. The hydraulically-actuated, heavy-duty dry clutch, two high tensile strength six-rib drive belts, and hydraulic belt tensioner are adjustment-free.

SELECT ROTOR SPEEDS “ON THE FLY”

The RM600 and RM800 offer six rotor speeds that are electronically selectable without leaving your seat. A 2-speed rotor gearbox features low and high ranges. Regardless of the gearbox speed range, you have your choice of three speeds that can be changed “on the fly” with no need to stop work.

RM800 offers a total of 12 rotor speeds. Access to the additional six speeds requires a manual low/high pulley position change. Regardless of pulley position, the operator can access six rotor speeds from the operator station.

RELIABLE ROTOR DRIVE SYSTEM

MAXIMIZES PRODUCTION



ENHANCE CAPABILITIES WITH OPTIONAL SPRAY SYSTEMS



Computerized water and emulsion additive systems accurately monitor application rates for precise distribution. Using the touch screen display in the cab, operators can turn spray nozzles on or off to customize spraying width and easily set up the spray systems for the delivery of liquid additives according to specifications:

- + Manual or automatic
- + Volume per minute
- + Volume per m² (yd²)
- + Percent of material density

Spray bars conveniently slide out on either side for inspection, cleaning and service. An optional push bar is available.

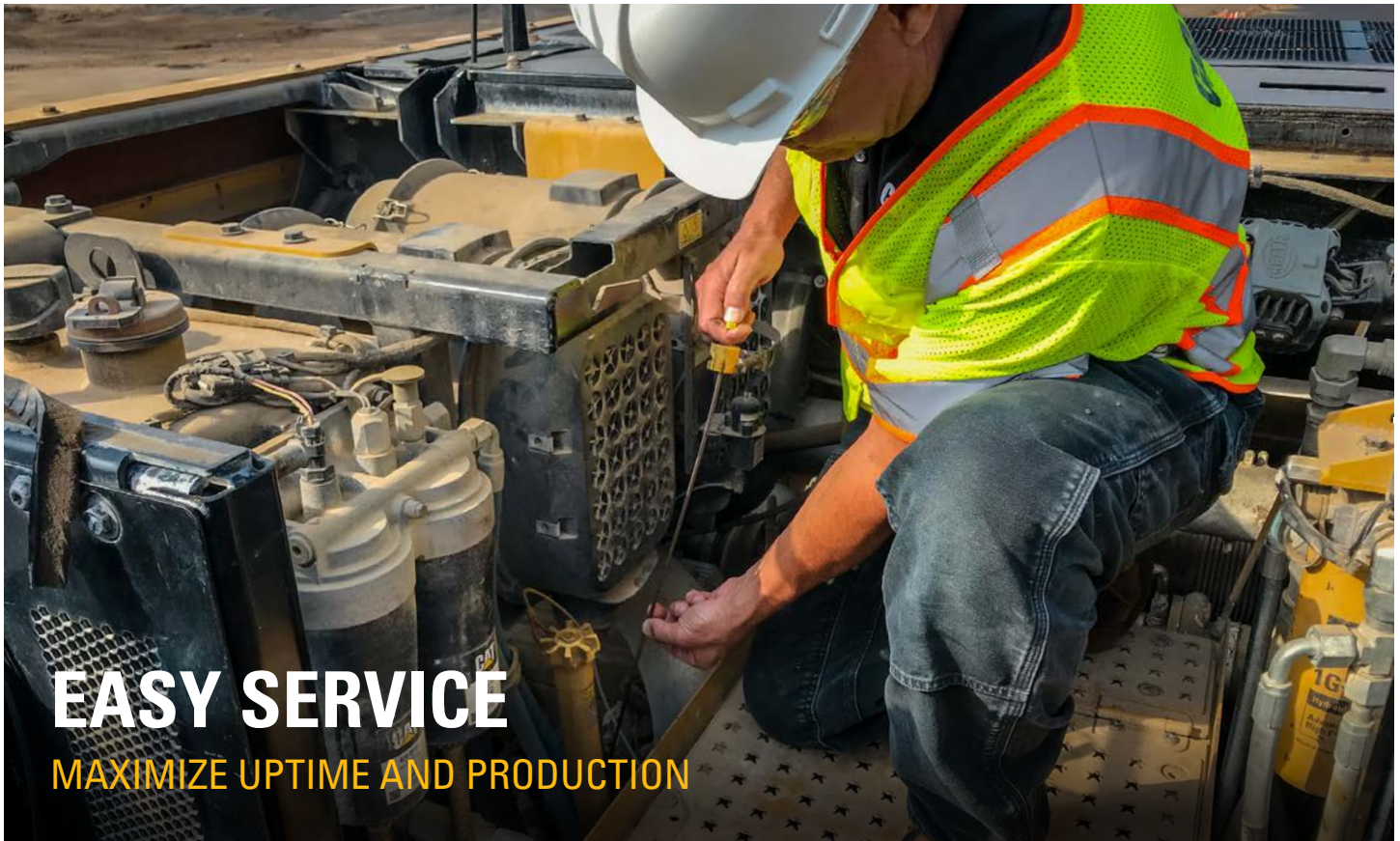
WATER SPRAY SYSTEM

The Water Spray System automates the addition of metered water to the mixing chamber, allowing the machine to mix the specified measured amount into the materials. It delivers a wide range of variable flow rates with nozzles that produce an optimal spray pattern at high, medium and low flow ranges. For water use only—not for use with emulsions.

EMULSION SPRAY SYSTEM

The Emulsion Spray System is capable of delivering bitumen emulsion or water. It automates the addition of metered emulsion to the mixing chamber, allowing the machine to mix the specified measured amount into the materials. This pump unit provides an infinitely variable volume.

The system can recirculate material to maintain temperature when idling or when cleaning out the system. When completing an application, a cleanout feature purges excess fluid back to the truck or other receptacle. Self-cleaning nozzles keep maintenance at a minimum.



EASY SERVICE

MAXIMIZE UPTIME AND PRODUCTION

The RM600 and RM800 are designed with safe, secure, walk-in access to routine service items behind the cab. Removable panels provide additional access to the engine and cooling system. Extended maintenance intervals not only reduce downtime but decrease the amount of fluid and filters that are replaced over the life of the machine, reducing owning and operating costs. Built-in diagnostics monitor machine systems and alert the operator of performance issues and provide troubleshooting information. Your Cat dealer is ready to help with service options and convenient parts availability for both the engine and your machine.

EASY ROTOR SERVICE

The rotor chamber opens wide and optional hydraulically-powered rotor turning with a control pendant powers the rotor in either direction during maintenance. Easily change out triple-tree components using the access door on the sides of the rotor chamber. An optional magnetic base work light can be placed where needed to illuminate the work area.

COMPRESSED AIR SYSTEM

A standard compressed air system with two access points speeds up rotor bit changes by powering pneumatic tools and can be used for general machine cleaning. A lockable rotor service switch inhibits any machine function so the engine can safely run to supply compressed air when servicing the rotor.

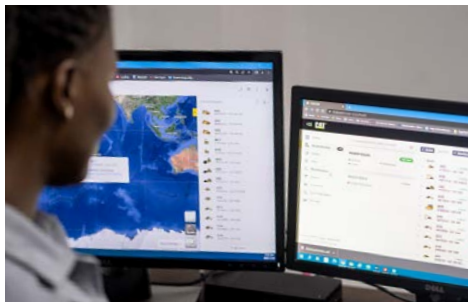
GROUND LEVEL CONTROLS

Controls located at ground level next to the operator access ladder adjust machine height, rotor height and rotor chamber doors for service. When using the emulsion system, activating the clean-out switch reverses the pump to purge or clean out the system.

CAT EQUIPMENT MANAGEMENT TECHNOLOGY

TAKES THE GUESSWORK OUT OF MANAGING YOUR EQUIPMENT

Cat equipment management telematics technology helps take the complexity out of managing your jobsites – by gathering data generated by your equipment and serving it up to you in customizable formats.



VISIONLINK®

VisionLink® takes the guesswork out of managing your entire fleet – regardless of size or equipment manufacturer.* Review equipment data from your desktop or mobile device to maximize uptime and optimize assets. With interactive dashboards, VisionLink makes it easier for operations of all sizes to make informed decisions that lower costs, simplify maintenance, and improve safety and security on your jobsite. With different subscription-level options, your Cat dealer can help you determine what you need to connect your fleet and manage your business.

- + 24/7 Fleet Monitoring
- + Mixed Fleet Management
- + Optimize Fleet Utilization
- + Track Assets by Location
- + View Asset Health Status
- + Review Inspection Reports
- + Assign Maintenance Tasks
- + Minimize Downtime
- + Request Service and Order Parts
- + Download Summary Reports

* Data field availability can vary by equipment manufacturer and is provided through an application programming interface (API). VisionLink subscription required. Availability may vary by region, consult your Cat Dealer for more details.



REMOTE SERVICES**

Remote Troubleshoot allows your Cat dealer to perform diagnostic testing on your connected machine remotely, pinpointing potential issues while the machine is in operation. Remote troubleshooting helps to ensure the technician arrives with the correct parts and tools the first time, eliminating additional trips to save you time and money.

Remote Flash allows you to update onboard software without a technician being present, allowing you to initiate software updates when convenient, increasing your overall operating efficiency.

** Must be within cell range coverage.



CAT INSPECT

Cat Inspect is a mobile application that allows you to easily perform digital preventative maintenance checks, inspections, and daily walkarounds. The app includes machine-specific Preventive Maintenance (PM) checklists to perform service intervals as recommended in the Operation and Maintenance Manual. Inspections can easily be integrated with other Cat data systems like VisionLink so you can keep a close eye on your fleet.

Caterpillar releases products, services and technologies in each region at different time intervals. Please verify with your local Cat dealer for technology availability and specifications.

TECHNICAL SPECIFICATIONS

POWERTRAIN

RM600	Build Number: 01A
Engine Model	Cat® C18
Cylinders	6
Emissions	U.S. EPA Tier 4 Final, EU Stage V, Korea Stage V
Gross Power @ 2,000 rpm – SAE J1995	475 kW 637 hp
Engine Power @ 2,000 rpm – ISO 14396	469 kW 629 hp
RM800	Build Number: 01B
Engine Model	Cat C18 twin-turbo
Cylinders	6
Emissions	U.S. EPA Tier 4 Final, EU Stage V
Gross Power @ 1,800 rpm – SAE J1995	601 kW 806 hp
Engine Power @ 1,800 rpm – ISO 14396	595 kW 798 hp
Maximum Operating Speed	
RM600	65 m/min 213 ft/min
RM800	59 m/min 194 ft/min
Maximum Travel Speed	12.1 km/h 7.5 mph
Propel System	All-Wheel Drive

• Advertised power is tested per the specified standard in effect at the time of manufacture.

MACHINE WEIGHT

	Operating	Maximum
RM600	33 530 kg 73,921 lb	35 600 kg 78,484 lb
RM800	33 378 kg 73,586 lb	35 420 kg 78,088 lb

- Operating weight is approximate and includes base machine, no options, ROPS, cab, coolant, lubricants, System K rotor, 50% full fuel tank, 50% full DEF tank (if installed) and 75 kg (165 lb) operator.
- Maximum weight is approximate and includes base machine, all options, ROPS, cab, coolant, lubricants, System K rotor, full fuel tank, full water tank, full DEF tank (if installed) and 75 kg (165 lb) operator.

CUTTING SYSTEM

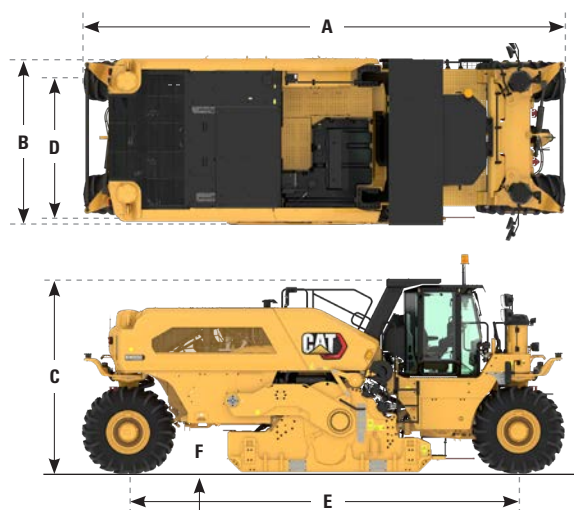
Rotor Drive	Belt
Cutting Width	2.44 m 8 ft
Maximum Cutting Depth	508 mm 20 in
Number of Bits	208
Rotor Diameter (over bits)	1450 mm 57.1 in
Tool Spacing	15 mm 0.59 in
Tool Tip Height	300 mm 11.8 in
Flush Cut	Right Hand Side

SPRAY SYSTEM FLOW RATES

Water Spray System	30-1900 lpm 8-500 gpm
Emulsion Spray System	30-850 lpm 8-225 gpm

SERVICE REFILL CAPACITIES

Fuel Tank	1230 L 325 gal
Cooling System	99 L 26.1 gal
Engine Oil	68 L 18 gal
Hydraulic Tank	120 L 31.7 gal
Washdown Water Tank	454 L 120 gal
Diesel Exhaust Fluid (DEF) Tank (RM600)	47 L 12.4 gal



DIMENSIONS

A Transport Length	8.72 m 28.61 ft
B Transport Width	3 m 9.8 ft
C Transport Height	3.5 m 11.5 ft
D Cutting Width	2.44 m 8 ft
E Wheelbase	7.05 m 23.13 ft
F Ground Clearance	506 mm 19.9 in
Inside Turning Radius (minimum)	3.09 m 10.14 ft
Outside Turning Radius (maximum)	6.96 m 22.83 ft
Maximum Cross Slope	8 degrees

RM600 ROTOR SPEEDS (RPM)

Rotor Gearbox Speed	Engine Speed	Rotor Speed
Low	1	101
	2	118
	3	135
High	1	150
	2	175
	3	200

RM800 ROTOR SPEEDS (RPM)

Rotor Gearbox Speed	Engine Speed	Low Pulley Position	High Pulley Position
Low	1	97	120
	2	103	128
	3	109	135
High	1	144	179
	2	153	190
	3	162	201

AIR CONDITIONING

- The air conditioning system on this machine contains the fluorinated greenhouse gas refrigerant R134a or R1234yf. See the label or instruction manual for identification of the gas.
- If equipped with R134a (Global Warming Potential = 1430), the system contains 2.0 kg (4.4 lb) of refrigerant which has a CO₂ equivalent of 2.860 metric tonnes (3.153 tons).

STANDARD & OPTIONAL EQUIPMENT

Your local Cat dealer can help configure a machine to meet your application requirements.

OPERATOR ENVIRONMENT	STANDARD	OPTIONAL
Adjustable armrests	●	
Air-ride, heated suspension seat	●	
180° rotating operating station	●	
Audio-ready with speakers	●	
Full-width sliding cab with heat and air conditioning	●	
Push button start	●	
High-visibility retractable seat belt	●	
On-screen steering guides	●	
Color touch screen displays (2)	●	
12-Volt and USB power ports	●	

POWERTRAIN	STANDARD	OPTIONAL
Dual element air cleaner with pre-cleaner	●	
Cat® Extended Life Coolant (ELC) with protection to -37° C (-35° F)	●	
Auto-reversing, on-demand cooling fan	●	
Engine Idle Speed Management	●	
Automatic Load Control	●	
Four steering modes	●	
All-time All-wheel drive	●	
Electronic differential	●	
Slope Control	●	
Cat Bio HYDO™ Advanced biodegradable hydraulic oil		○
CE Certificate		○

SERVICE AND MAINTENANCE	STANDARD	OPTIONAL
Cat VisionLink®	●	
Remote Flash	●	
Remote Troubleshoot	●	
Remote access drains	●	
Scheduled Oil Sampling (S•O•S SM) ports	●	
Fluid level sight gauges	●	
Service light receptacles	●	
Air compressor	●	
Lockable storage	●	
Bit bucket tray	●	
Fast fill fuel system		○
Hydraulically-powered rotor turning with pendant		○
High pressure washdown system		○
Magnetic service light		○
Pneumatic bit removal tools		○

ELECTRICAL SYSTEM	STANDARD	OPTIONAL
150-Amp alternator	●	
24-Volt charging system	●	
Automotive-type fuse system	●	
Remote start/charge receptacle	●	
1000 CCA maintenance-free batteries (4)	●	

SPRAY SYSTEMS	STANDARD	OPTIONAL
Water spray system		○
Emulsion spray system		○
Push bar		○

ROTOR DRIVE SYSTEM	STANDARD	OPTIONAL
Electronic driveline protection	●	
Automatic depth control	●	
Hydraulically-controlled dry clutch	●	
2-speed planetary gearbox	●	
Six rotor speeds (RM600)	●	
Twelve rotor speeds (RM800)	●	
Variable volume mixing chamber	●	
System K rotor	●	
Toolholder protection – Wedge	●	
Toolholder – 20 mm shank bits		○
Toolholder – 22 mm shank bits		○

SAFETY AND SECURITY	STANDARD	OPTIONAL
Back-up alarm	●	
Ground level emergency shutdown switches (4)	●	
Horn (front and rear)	●	
FOPS cab	●	
ROPS	●	
Platform handrails and guardrails	●	
Folding rear view mirrors	●	
Illuminated access ladder	●	
Operator ID profiles	●	
Bluetooth key fob		○
LED working lights	●	
LED roading lights		○
Folding LED safety beacon		○
Front and rear facing cameras	●	
Front and rear rotor chamber door cameras	●	
Folding side view cameras (2)		○

For more complete information on Cat products, dealer services and industry solutions, visit us on the web at www.cat.com

© 2025 Caterpillar. All Rights Reserved.

Materials and specifications are subject to change without notice. Featured machines in photos may include additional equipment. See your Cat dealer for available options.

CAT, CATERPILLAR, LET'S DO THE WORK, their respective logos, "Caterpillar Corporate Yellow", the "Power Edge" and Cat "Modern Hex" trade dress as well as corporate and product identity used herein, are trademarks of Caterpillar and may not be used without permission. VisionLink is a trademark of Caterpillar Inc., registered in the United States and in other countries.

www.cat.com www.caterpillar.com

QEHQ3032-01 (06/2025)
RM600 Build Number: 01A
RM800 Build Number: 01B
(N Am, Chile, Columbia, Europe, Türkiye,
S Korea, Taiwan, Hong Kong, Aus-NZ)

