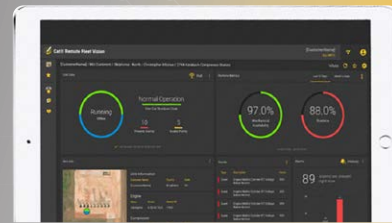


# Cat® Remote Fleet Vision



## CAT® REMOTE FLEET VISION

Cat® Remote Fleet Vision (RFV) provides you with the customized data you need to identify and resolve problems quickly. Locate, track, and manage all your assets with just a few clicks – no matter where you're located or what brands you operate. Whether you aim to improve efficiency, reduce risk, cut costs, or boost your bottom line, the data is at your fingertips through any satellite, cellular or local network connection.

## KEY FEATURES & BENEFITS

**Reliable data.** Make smart, fast decisions – from wherever you are.

With Cat RFV, you have access to the data and analytics you need to monitor asset location, operation status and maintenance or repair needs. This accurate and timely information helps you to make smarter, faster decisions about how to maximize the life and health of your fleet.

**Timing is critical.** With customizable, user-defined thresholds, you can decide when and how you receive timely alerts.

Through e-mail or text, you can ensure you reach the right person who can act immediately in a critical situation.

**The view from 30,000 feet.** Using field and historical data to pinpoint issues.

Cat RFV works with your engine's Product Link™ hardware to provide a comprehensive view of asset health – through engine and/or machine channels. This makes it easy to determine if issues lie with the engine or with equipment like a compressor, transmission, or pump – allowing you to make a targeted call on maintenance or repair needs.

**Customization and flexibility.** Get the information you need and not what you don't.

Cat RFV technology solutions are fully customizable and tailored to your specific needs – based on size of fleet, budget, established workflows and more. Create and manage asset hierarchies that allow the OEM, dealers, and customers to view assets each level needs access to manage.

**No unnecessary service visits.** Updates keep your engine running.

With Remote Flash and Remote Troubleshooting, your Cat dealer or service representative can update electronic control modules and perform most electronic technician tasks remotely, saving you time and money by getting you back up and running.

## HIGHLIGHTS

### Data Communication Status:

- [+] Fleet Connectivity
- [+] Unit Connectivity

### Asset Hierarchy

- [+] Create and Manage a Hierarchy for All Levels of Your Business
- [+] Give Asset Access to OEM, Dealer, and Customer Views Allowing All Users in the Value Chain to Manage the Assets Effectively

### System Vitals:

- [+] Stopped / Invalid / Offline / Running
- [+] Runtime Metrics Tracking
- [+] Downtime Tracking
- [+] Mechanical & Customer Availability Tracking
- [+] Customization of Downtime Events to Customer or Provider

### Events & Diagnostics

- [+] Fleet Summary
- [+] Unit View with Detail Description
- [+] Hierarchal View (Fleet / Unit / Asset Level)
- [+] Detailed Fault Descriptions of Code / Severity / Type

### Customizable Trending Visualization

- [+] Multiple Assets, Multiple Axis Trending Across Sensors
- [+] Flexibility to Save Trends and Export

### Alarms (Fleet / Unit / Asset Level)

- [+] Hierarchal View by Priority and/or Severity
- [+] Global Filtering
- [+] Aggregated Alarms
- [+] Historical Alarm Visualizations (by Groups and Count)
- [+] Threshold Customization by Sensor
- [+] Alarm Suppression Capability

### Unit & Fleet Vitals

- [+] Unit Data: Running / Invalid / Stopped / Online / Offline
- [+] Customizable Vitals View: Gauge / Tabular
- [+] Aggregated Vitals by Fleet, Units, Asset: Idle / Active / Fuel Use by Category with amount and percentage

### Geofencing

- [+] Flexible by trip / date / time
- [+] Historical Tracking

For more information or to download our Digital Services Overview, visit [cat.com/en\\_US/by-industry/industrial-power/connectivity.html](http://cat.com/en_US/by-industry/industrial-power/connectivity.html). To get started today, contact your Cat dealer.

LET'S DO THE WORK.™

PEJJ0582

© 2023 Caterpillar. All Rights Reserved. CAT, CATERPILLAR, LET'S DO THE WORK, their respective logos, "Caterpillar Corporate Yellow", the "Power Edge" and Cat "Modern Hex" trade dress as well as corporate and product identity used herein, are trademarks of Caterpillar and may not be used without permission.

