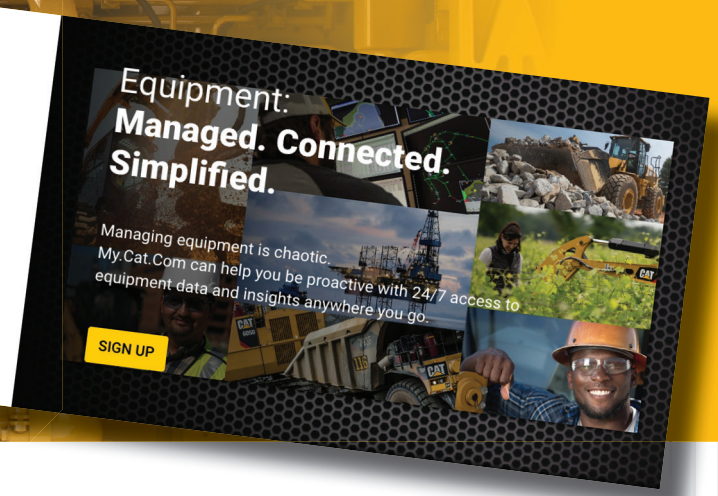
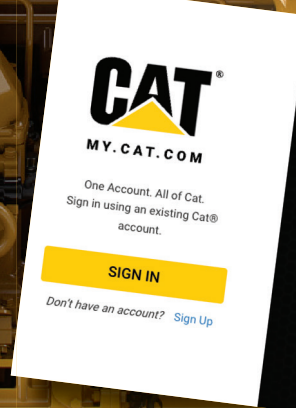


MY.CAT.COM



MY.CAT.COM

My.cat.com is a website where users can access all of their engine data from any location, using any device, and with a single login. My.cat.com includes data from more than a dozen different Caterpillar and Cat® dealer sources, all in one place—everything from preventive maintenance (PM) schedules, parts and service records and inspection reports to information about rental contracts, warranty coverage, safety issues and more.

KEY FEATURES

Health Data

- [+] Review results from fluid analysis
- [+] Assign inspections or track inspection results
- [+] Track preventive maintenance schedules and manage alerts

Operations/Agreements

- [+] Track and store an asset or machine's parts or service history
- [+] Manage open work orders
- [+] Act on Safety Service Letter notifications
- [+] Verify warranty or Equipment Protection Plan coverage

Tool Kit

- [+] Access/review Operation & Maintenance Manuals (OMMs)
- [+] Technical specifications & performance data
- [+] Parts ID (SIS, enabled by subscription)
- [+] Emissions data

[+] DATA PRIVACY

Caterpillar's commitment to Data Privacy is reflected in the following statements. Visit Cat.com to view Caterpillar's "Data Principles" and "Data Governance" statements.

- [+] We are transparent about the collection and use of your data.
- [+] We protect your data.
- [+] We use your data to create value and improve products for our customers.

Dealer Support

- [+] Dealer locations, hours, contacts
- [+] Buy parts / schedule service
- [+] Request quotes for Customer Value Agreement (CVA) / warranty
- [+] Manage your rental equipment

Utilization

- [+] Monitor location, hours, events and fuel on units subscribed to Cat Daily

SEE WHAT YOU'VE BEEN MISSING

All this information is available at your fingertips – with a single sign-on – at MY.CAT.COM, enabling you to more proactively manage your equipment, control costs and improve operations.

LET'S DO THE WORK.™

PEXQ1322

© 2022 Caterpillar. All Rights Reserved. CAT, CATERPILLAR, LET'S DO THE WORK, their respective logos, "Caterpillar Corporate Yellow", the "Power Edge" and Cat "Modern Hex" trade dress as well as corporate and product identity used herein, are trademarks of Caterpillar and may not be used without permission.

