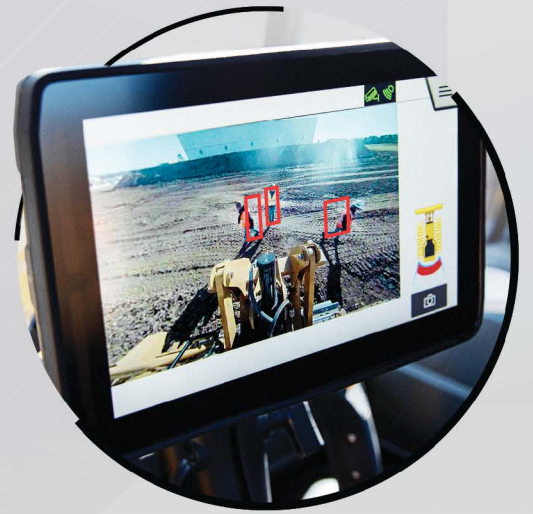
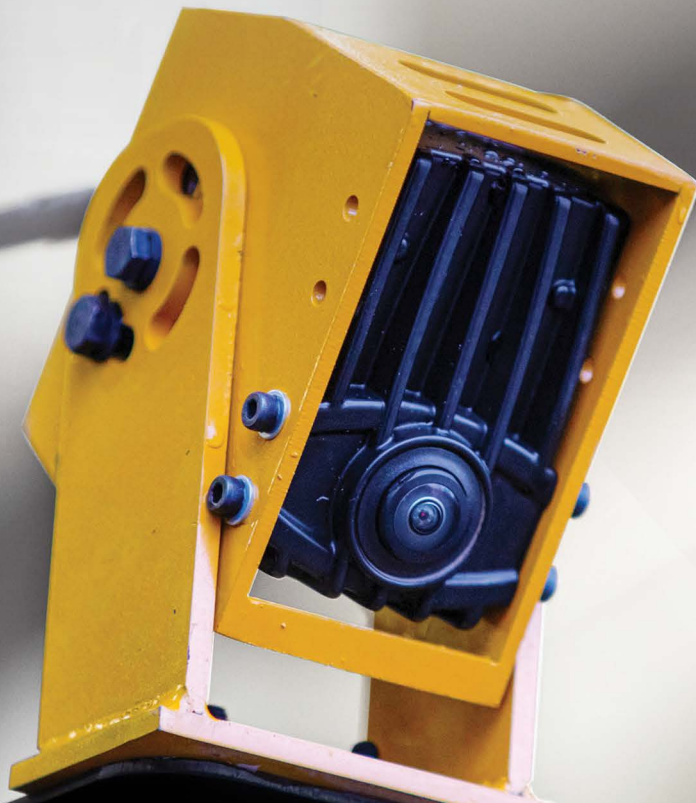


CAT® DETECT WITH
SMART CAMERA



SMART CAMERAS MAKE **SAFER** SITES

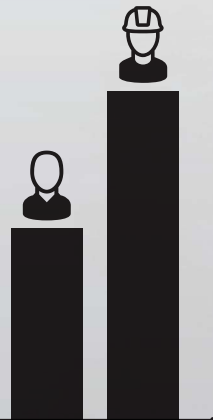


CAT® SAFETY UPGRADES



THERE'S A NEW WAY TO **SEE** YOUR JOBSITE

Working in construction can be risky. The U.S. Occupational Safety and Health Administration reports that one in five worker deaths is a construction worker. A National Institutes of Health study found construction workers are **71% more likely to be injured on the job** than those in other lines of work.



How can you help decrease these statistics? One of the leading contributors to worksite accidents is poor visibility. You can help keep people around the machine safe with **CAT® SMART CAMERA**.

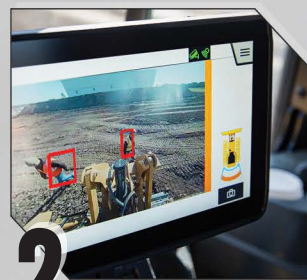
INCREASING SAFE OPERATION IS AS EASY AS 1-2-3

The Smart Camera system makes it simple to increase operator awareness and protect people on the ground.

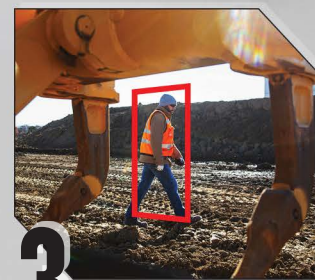
Here's how it works:



1 The rear-facing smart camera actively looks for people, providing another set of eyes behind the machine.



2 A high-definition, touchscreen display provides the operator with additional views around the machine and engages with the operator when a person is detected behind the machine.



3 Intelligent alerts notify the operator when people are behind the machine. The frequency and intensity of the visual and audible alarms increases the closer someone gets to the machine.



VISIBLE BENEFITS FOR YOUR OPERATION

The safety benefits of the Smart Camera system are clear. It reduces blind spots to help minimize unwanted contact with other equipment, objects and people, and **it alerts the operator when a person is detected behind the machine**. Safer operation leads to other advantages, too:



Decrease
unwanted
contact
=
Decrease
human equipment
interactions



Reduce need for
spotters on site
=
Reduce risk
and labor costs



Greater operator
confidence
=
Greater
productivity,
accuracy
and speed

EASY INSTALLATION, EASY IMPLEMENTATION

Smart Camera isn't a generic closed-circuit camera system. **It's built to stand up to tough conditions and adapt to fit your operator and application requirements.** Adding it to your Cat equipment — and other brands — is easy. You can install it on any machine with a 12- or 24-Volt DC system.





TAKE THE NEXT STEP TOWARD A **SAFER** SITE

Talk to your Cat dealer about installing
CAT[®] DETECT WITH SMART CAMERA
on your equipment.

Interested in more convenient, affordable ways to enhance safety on your site? Other options include **Cat[®] Detect with Surround Cameras**, **Cat[®] Detect with Rear Camera**, and the **Cat[®] Seat Belt Reminder**. Investing in these easy upgrades delivers big returns for your operation: Fewer accidents. Less downtime. Lower costs. More confident, productive operators.

Scan the QR code below to let your dealer know you're interested in making your worksite safer.



PEDJ1016-02

© 2023 Caterpillar. All Rights Reserved. CAT, CATERPILLAR, LET'S DO THE WORK, their respective logos, "Caterpillar Corporate Yellow", the "Power Edge" and Cat "Modern Hex" trade dress as well as corporate and product identity used herein, are trademarks of Caterpillar and may not be used without permission.

CAT.COM/SMARTCAMERA

