

993

WHEEL LOADER



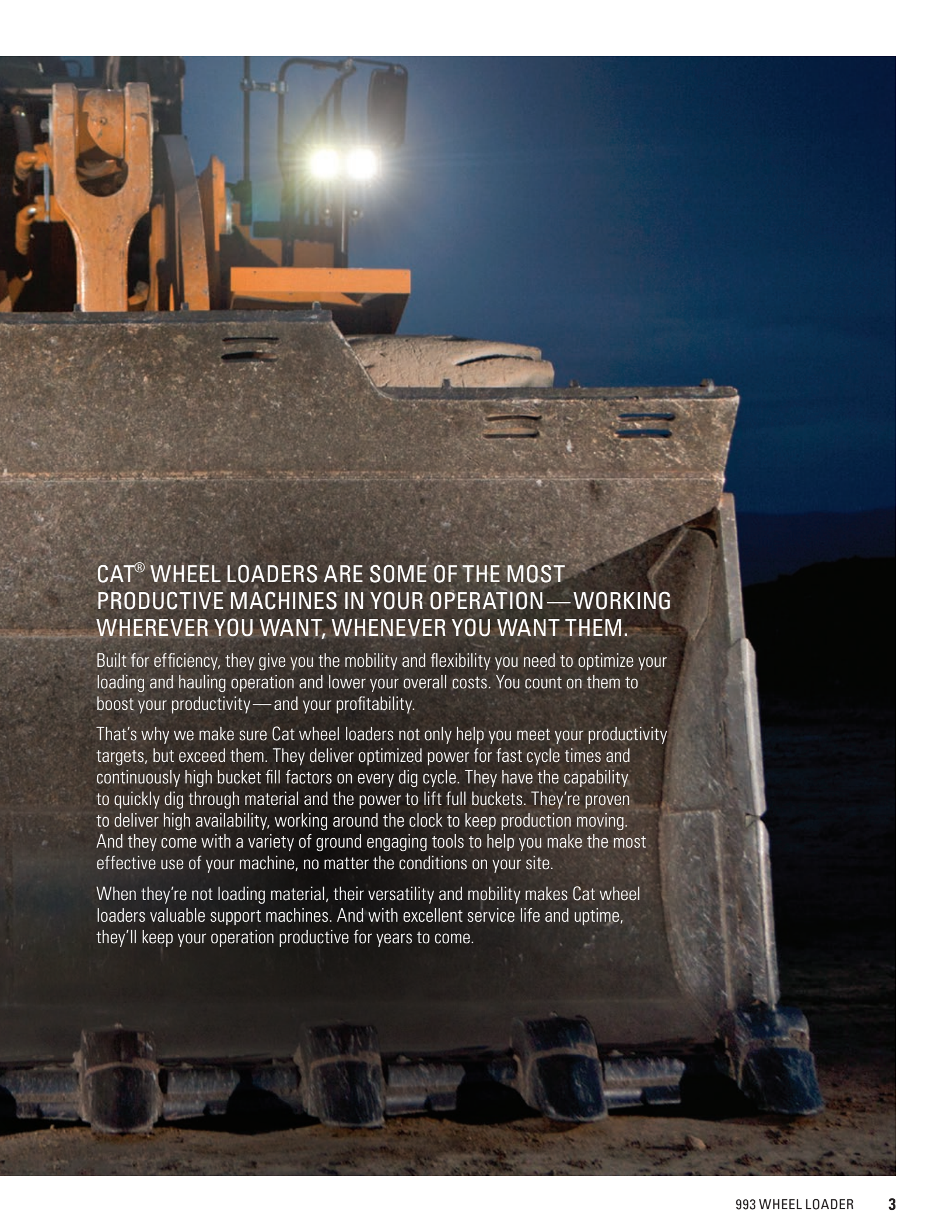
Net Power:	764 kW (1,024 hp)
Operating Weight:	133 668 kg (294,687 lb)
Bucket Capacities:	12.2-23.7 m ³ (16.0-31.0 yd ³)





CAT® WHEEL LOADERS

**LEADING
THE WAY
IN LOADING**



CAT® WHEEL LOADERS ARE SOME OF THE MOST PRODUCTIVE MACHINES IN YOUR OPERATION — WORKING WHEREVER YOU WANT, WHENEVER YOU WANT THEM.

Built for efficiency, they give you the mobility and flexibility you need to optimize your loading and hauling operation and lower your overall costs. You count on them to boost your productivity — and your profitability.

That's why we make sure Cat wheel loaders not only help you meet your productivity targets, but exceed them. They deliver optimized power for fast cycle times and continuously high bucket fill factors on every dig cycle. They have the capability to quickly dig through material and the power to lift full buckets. They're proven to deliver high availability, working around the clock to keep production moving. And they come with a variety of ground engaging tools to help you make the most effective use of your machine, no matter the conditions on your site.

When they're not loading material, their versatility and mobility makes Cat wheel loaders valuable support machines. And with excellent service life and uptime, they'll keep your operation productive for years to come.



LOAD MORE. MAKE MORE.

Like all Cat wheel loaders, the 993 is designed with durability built in, ensuring maximum availability through multiple lifecycles. With optimized performance and simplified serviceability, the 993 allows you to move more material efficiently and safely at a lower cost per ton. Introduced in 2008, the success of the 993 is a testament to its heritage. Infused with Cat DNA, the roots of performance, durability, comfort and efficiency run deep.

MULTIPLE LIFECYCLES

- » Highly durable structures and field-proven lift arms for maximum uptime and multiple lifecycles

COMFORTABLE & PRODUCTIVE CAB

- » Unparalleled operator comfort and ergonomics help you get the most from your machine — shift after shift

EFFICIENT LOADING & HAULING SYSTEM

- » Bucket sizes perfectly matched to Cat truck bed capacities for optimum loading efficiency



Combines high breakout force, durability, speed and agility to deliver overall greater efficiency, versatility and safety — at a lower cost.

**EXCELLENT
DIGGING**
— IN ALL —
CONDITIONS

LOAD MORE EVERY CYCLE

The 993 features a powerful engine, proven transmission and efficient hydraulic system that enable fast cycle times and high production—delivering more to your bottom line.



FUEL-CONSERVING FEATURES

The 993 offers machine control features that automate functions to conserve fuel.

- + Auto Idle Kickdown with Auto Resume reduces the engine speed to low idle when the machine has been throttle-locked at a higher engine speed and has been in an idle state for an extended period of time. The technology automatically resumes engine speed to previous throttle lock speed when the operator begins working.
- + Engine Idle Shutdown will automatically shut down the engine after extended periods of idling. The loader must be in neutral with the parking brake applied and no movement of any controls for a set period of time (default is 5 minutes).
- + Powertrain torque strategy (PTS) is a machine control feature that controls engine speed to provide optimum torque converter output torque and reduce engine fuel consumption.

RIMPULL CONTROL

Advanced technologies like the Impeller Clutch Torque Converter (ICTC) and Rimpull Control System (RCS) lower costs by improving rimpull control. These technologies reduce tire slippage and wear by modulating rimpull from 100% to 25% while depressing the left pedal. After 25% rimpull is achieved, the left pedal applies the brake. RCS reduces the potential for wheel slippage without reducing hydraulic power. Fuel efficiency is improved in certain applications with the lock-up clutch torque converter providing direct drive.



PROVEN TRANSMISSION

The Cat Planetary Powershift Transmission is designed specifically for mining applications. It delivers consistent, smooth shifting and efficiency through integrated electronic controls. It offers three forward and three reverse speeds to match your application.

FAST CYCLES

The 993's Positive Flow Control Hydraulic System boosts efficiency with concurrent pump and valve control. By optimizing pump control, hydraulic oil flow is proportionate to implement lever movement. Fast, productive cycles are enabled by four electronically controlled, fully variable piston pumps. The system also increases bucket feel and control and delivers consistent performance and efficiency with lower system heat.

EFFICIENT POWER

At the heart of the 993 is a Cat C32B engine. Available in either U.S. EPA Tier 4 Final/EU Stage V or U.S. EPA Tier 2 Equivalent emissions configurations, the engine continues to provide the performance and efficiency our customers require. It delivers on-demand performance through the use of turbochargers and aftercoolers. A 33% torque rise ensures high lugging forces during digging and acceleration in high rimpull conditions. Reduced operating speed helps extend engine life and improve efficiency, and electronic engine controls enable quick engine response.



KEEP OPERATORS SAFE, COMFORTABLE & PRODUCTIVE

We understand that the most important factor in your wheel loader's effectiveness is the performance of its operator. To help make their workday as productive as possible, we've incorporated productivity, safety and comfort features into the 993 operator cab.



DESIGNED FOR PRODUCTIVITY

The 993's Steering and Transmission Integrated Control System (STIC™) combines directional selection, gear selection and steering into a single lever — for maximum responsiveness and control. A simple side-to-side motion turns the machine right or left, and the finger-controlled gear selection is easy to operate and minimizes operator movements. Low-effort integrated controls make cycles smoother and faster while reducing operator fatigue.

DESIGNED FOR CONFIDENCE

Confident loader operation starts with precise machine control enabled by the 993's load-sensing hydraulic steering system. The system helps operators achieve precise positioning for easy loading in tight areas with 43 degrees of steering articulation. Integrated steering and transmission control functions enhance comfort.

DESIGNED FOR COMFORT

The 993 operator environment includes dozens of features designed to enhance comfort and decrease fatigue, such as reduced vibration, low sound levels and automatic temperature controls.

The pressurized cab features a Cat Optimized Seat System with a high back design and extra thick, contoured cushions; air suspension system; and a seat-mounted implement pod and STIC steer that moves with the seat. Easy-to-reach seat levers and controls allow for six-way adjustments. The cab also includes a convenient trainer seat.





FOCUS ON

SAFETY

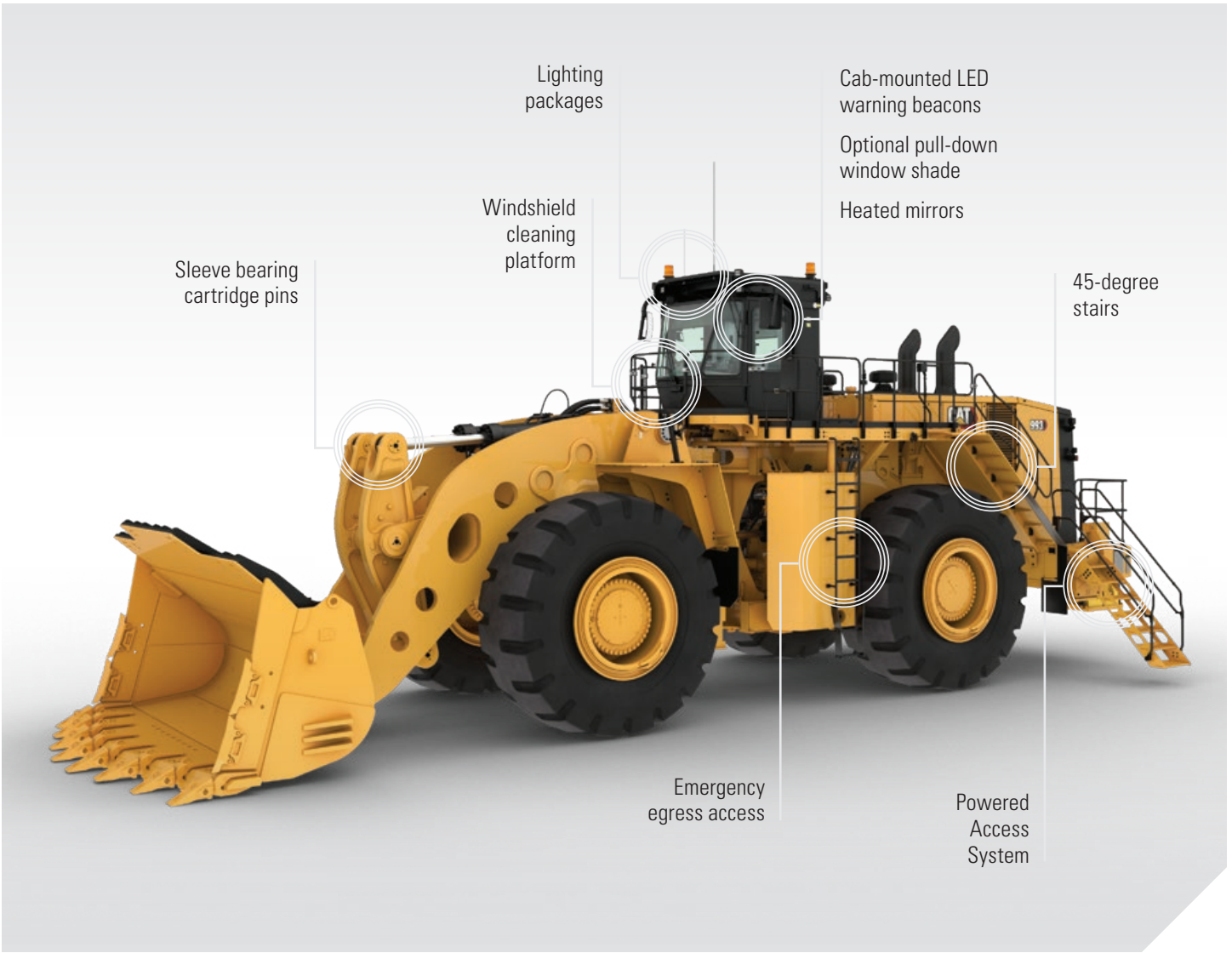
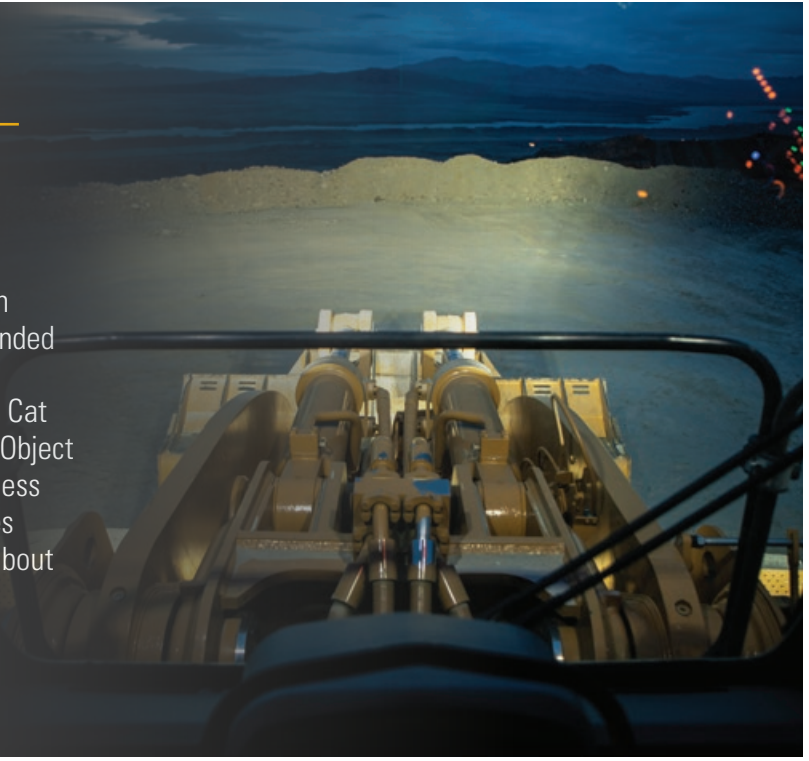
From slip-resistant surfaces and guard rails to state-of-the-art object detection technologies, the 993 is infused with features to help both operators and service personnel feel safe and confident on the job. We've improved access and egress, maximized visibility and made it possible to perform more service from the ground.

SAFER ACCESS AND EGRESS

A powered access system allows easier access to the primary stairs by improving ingress and egress to and from the rear platform. Wide stairs are at a 45-degree angle for easy access and feature full handrails on each side. Stairs may be raised and lowered from cab level or the ground and occupants can quickly exit with a conveniently located emergency release valve if the loader becomes inoperable. Wide walkways with non-skid surfaces and integrated lockout/tagout points are designed into the service areas.

MAXIMIZED VISIBILITY

The 993 offers several standard and optional features designed to improve visibility during truck loading operations. An optional pull-down window shade and heated mirrors ensure extended visibility for safe operation. Lighting packages provide excellent workspace visibility. Optional Cat MineStar™ Detect includes Cat Vision plus an Object Detection System to enhance operator awareness around the machine. Object Detection combines radar and camera systems to warn operators about light vehicles or stationary hazards within the immediate vicinity of their machines.



A WHEEL LOADER YOU CAN COUNT ON

ROBUST STRUCTURES

The 993 features highly durable structures that achieve multiple lifecycles and withstand the toughest loading conditions. A full box-section rear frame and four-plate loader tower resists torsional shock and twisting forces to maximize the life of mounted components. Robotically welded structures provide deep weld penetration for maximum durability and fatigue strength. Castings increase strength by spreading loads and reducing the number of parts.



PROVEN LIFT ARMS

Another key to maximum uptime and productivity is the 993's field-proven lift arms, which provide excellent visibility to the bucket edges and work area through a Z-bar design. High load stresses are absorbed by the solid steel lift arms. The use of one-piece castings enhances strength in key pin areas. Stress-relieved arms increase durability and lengthen time to repair.

BUILT TO BE REBUILT

The Cat 993 is one of the most rebuilt products in the Cat machine lineup. The frame, powertrain, engine and components are all built to be rebuilt — using new, remanufactured or rebuilt parts and components — so you can take advantage of multiple lives of like-new performance at a fraction-of-new price.

RELIABILITY FEATURES

The 993 is designed to keep service time to a minimum and incorporates features that extend the life of components.

- + The Delayed Engine Shutdown feature, which protects engine components from shutting down if they are too hot, can extend turbocharger and engine life.
- + Battery Management Strategy is a software control feature that extends component life by shutting off electrical power to machine components when it has determined that the engine is not running.
- + Overspeed Prevention prevents overspeed of the steering pump when the loader is traveling, supplementing machine retarding.
- + Neutral Coast Inhibit inhibits shifting the transmission into neutral gear at high vehicle speeds, increasing service brake life and preventing coasting in neutral.



GET THE RIGHT TOOLS FOR YOUR APPLICATION

Selecting the right bucket and Ground Engaging Tools (GET) is a key contributor to the productivity, performance and uptime of your Cat 993. The process starts with knowing the density of the material your load. From there, you can select the size of your bucket and appropriate GET that will suit the rated payload targets of your machine.



CAT BUCKETS

Your Cat dealer can help you configure your bucket or have a custom bucket made to suit your application. Options include:

HEAVY-DUTY ROCK BUCKETS

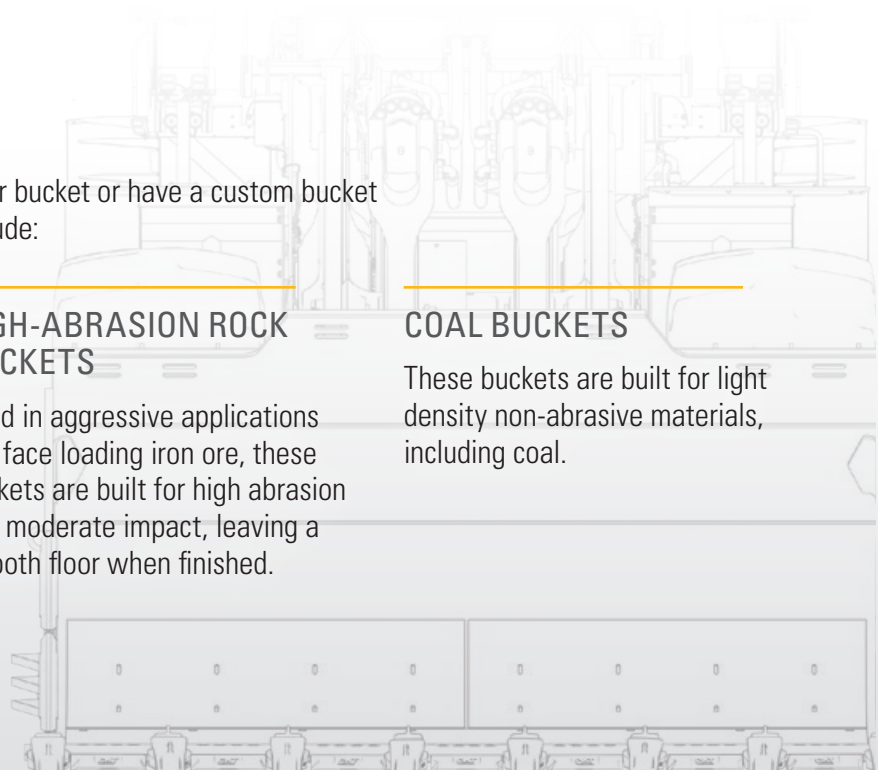
Used in applications like face loading tightly compacted pit materials, moderate-abrasion factors and high-impact loads are suitable for this bucket.

HIGH-ABRASION ROCK BUCKETS

Used in aggressive applications like face loading iron ore, these buckets are built for high abrasion and moderate impact, leaving a smooth floor when finished.

COAL BUCKETS

These buckets are built for light density non-abrasive materials, including coal.



GROUND ENGAGING TOOLS

Cat GET for the 993 protect expensive components, help you get the most out of your machine's performance and reduce your operating costs. Cat GET features CapSure™ Retention Technology, which simplifies component replacement with hammerless retention for fast, easy and safe installation. CapSure tips, shrouds and sidebar protectors are easily locked and unlocked with a 180-degree turn of a 3/4-inch ratchet. For a full list of Cat GET, visit cat.com/get.

CAT ADVANSYS™ GROUND ENGAGING TOOLS

The Cat 993 is available with a variety of performance-built Advansys GET like these to meet your application requirements.

- + CapSure Sidebar Protector
- + MAWPs – on Side and Bottom
- + Base End Edge Protector
- + Edge Protection Options
- + CapSure Shrouds
- + Half Arrow Segment
- + CapSure Tip Options
- + Heavy Duty Tip
- + Heavy Abrasion Tip
- + Heavy Penetration Tip
- + Coal Tip



SMART MACHINE

MAXIMIZED PRODUCTIVITY

The 993 is integrated with electronics that provide flexible levels of information to both the site and the operator. This integration creates a smart machine and more informed operator, maximizing the productivity of both.



CAT PRODUCT LINK™

Product Link takes the guesswork out of asset management by providing remote access to information through the easy-to-use VisionLink® interface. You'll be able to stay informed on machine systems and diagnostic codes; track utilization, fuel usage and payload summaries; and have access to machine location, service meter hours and reporting status.

VITAL INFORMATION MANAGEMENT SYSTEM (VIMS™)

VIMS allows you to connect directly to the machine for access to a wide range of sensor information and enhanced machine data. You can create productivity reports with payload and work cycle segmentation; identify operator training needs through productivity data; access detailed data logging of machine parameters and diagnostic codes; and track machine sensor information with trend analysis and histograms to monitor machine health.

ADVISOR DISPLAY WITH OPERATOR PERSONALIZATION

An upgraded touchscreen Advisor Display features a large screen that provides intuitive operation and easy navigation. It keeps operators informed about machine systems to decrease service time. The Advisor Display enables operators to instantly recall personalized feature settings, decreasing set-up time for individual operators. Operators have access to productive cycle time, loader payload and fuel usage information.

CYCLE TIMER

The Cycle Timer provides operator performance feedback by segmenting a loader truck loading cycle into eight segments. Average cycle time information is available in an on-board display. Detailed cycle time breakdown information is provided to VIMS for integration into off-board productivity reports.

CAT PRODUCTION MEASUREMENT

The Cat Production Measurement (CPM) payload weighing system offers improved accuracy over VIMS PCS in certain materials. CPM includes an operator display only. It does not provide wireless communication with VisionLink® and is not compatible with Advanced Productivity.

GAIN AN EDGE



FLEET



TERRAIN



DETECT



HEALTH



COMMAND

Whether you want to address a single challenge or make step changes in the safety, efficiency, productivity and overall costs of your operation, Cat MineStar has a solution for you. Fleet management, guidance technologies, safety offerings and machine health applications allow significant improvements in your operations and maintenance organizations.

Cat MineStar provides a comprehensive suite of mining technology products for the mining industry. It consists of a number of configurable capability sets that allow you to scale the system to your mine site needs.

OBJECT DETECTION

Mobile equipment operators need to be keenly aware of their environment, especially when putting their equipment into motion. Cat MineStar Object Detection combines radar and camera systems to warn operators about light vehicles or stationary hazards within the immediate vicinity of their machines. Available for the 993, the system improves operator awareness and enhances safety all around your site.

Object Detection is designed to increase safety and visibility during machine startup, initial movement and always in reverse. When radars are active, the system alarms only when the wheel loader is in gear and in the direction of a detected object. The radars are always active in reverse. Once the wheel loader reaches a speed threshold or distance traveled (customer configured option), the radars enter a standby state. The system is configurable for continuous and discrete alarming methods.

TERRAIN FOR LOADING

Mine site output depends on efficient loading and hauling. MineStar Terrain for loading makes those operations more productive while providing accurate feedback to key personnel. It shows wheel loader operators the type of material and the exact volume that is being loaded into trucks and crushers. Real-time feedback on payloads and design plan progress helps managers track materials and plan future operations. It increases productivity and accuracy, reduces rework, enhances ore control and improves shift-to-shift operator performance.



HEALTH

Cat MineStar Health delivers critical event-based machine condition and operating data for your 993 — and your entire fleet. It includes comprehensive equipment health and asset monitoring capabilities, with a wide range of diagnostic, analytic and reporting tools.

SPEND MORE TIME LOADING & LESS TIME SERVICING

The 993 was designed to reduce the time you spend on regular maintenance procedures, with features such as longer service intervals on fluids and filters, improved hose routings that make it easier to remove components, and advanced filtration system that boosts the reliability of your hydraulic system. The standard VIMS™ monitoring system delivers critical health and payload information, keeping performance at optimum levels and allowing advanced troubleshooting and planning to lower maintenance costs.

- + Ground-level or platform access and grouped service points enable safe and convenient service.
- + Swing-out doors on both sides of the engine compartment provide easy access to important daily service checks.
- + Ecology drains make service easier and help prevent spills.
- + Cat sleeve bearing cartridge pins eliminate the need for daily greasing and routine maintenance.
- + Centralized remote pressure taps.



DELUXE SERVICE CENTER

The 993 is now offered with a standard Deluxe Service Center, which increase safety, improves troubleshooting and reduces the costs of Planned Maintenance. The service station provides easy access to fluid level indicators, Cat Electronic Technician (ET) as well as fluid level indicators for hydraulic oil, steering oil, windshield washer fluid, fuel, engine oil, engine coolant, and auto lube grease level (if equipped).

ADVANCED FILTRATION SYSTEM

This Advanced Filtration System extends the performance and reliability of your hydraulic system. The system includes:

- + Implement/fan case drain filters
- + Steering case drain filters
- + Implement, steering, brake and fan high pressure screens
- + Full flow implement return screen
- + Full flow fan/steering return filter
- + Pilot filtration
- + Extended life transmission filter
- + Front and rear axle oil filters



MINING — FOR A — **BETTER WORLD**

Governments and regulatory agencies mandate that you establish and follow environmentally sound policies and practices as you meet the demand for mined materials. We're focused on doing our part to make sure our machines help you meet those regulations. Every piece of Cat equipment is designed to be better and do better. Because the better we mine, the better the world can be.

At Caterpillar, we continue to research alternative energy sources such as biofuels and liquefied natural gas and power options like electrification to find new ways to reduce emissions. In addition, we preserve raw materials, conserve energy and reduce emissions through the Cat Reman program, which returns end-of-life components to like-new condition.

We've designed the 993 to be more efficient and use less fuel, which reduces engine emissions and carbon footprint. Engine Idle Shutdown can help you save fuel by avoiding unnecessary idling. Fluids are better controlled through use of Cat anti-drain filter housings and component ecology drains. You can reduce waste, save energy and lower your overall costs by retrofitting your wheel loader with new features, and by rebuilding when it reaches the end of its life.





PARTNERS IN YOUR PERFORMANCE

Our commitment to your success doesn't end when your Cat 993 begins loading overburden or ore. We immediately start looking for ways to make your wheel loader work more efficiently, safely and productively. From addressing performance issues, to training operators and technicians, to calibrating onboard technologies — our support of your loader productivity is ongoing.

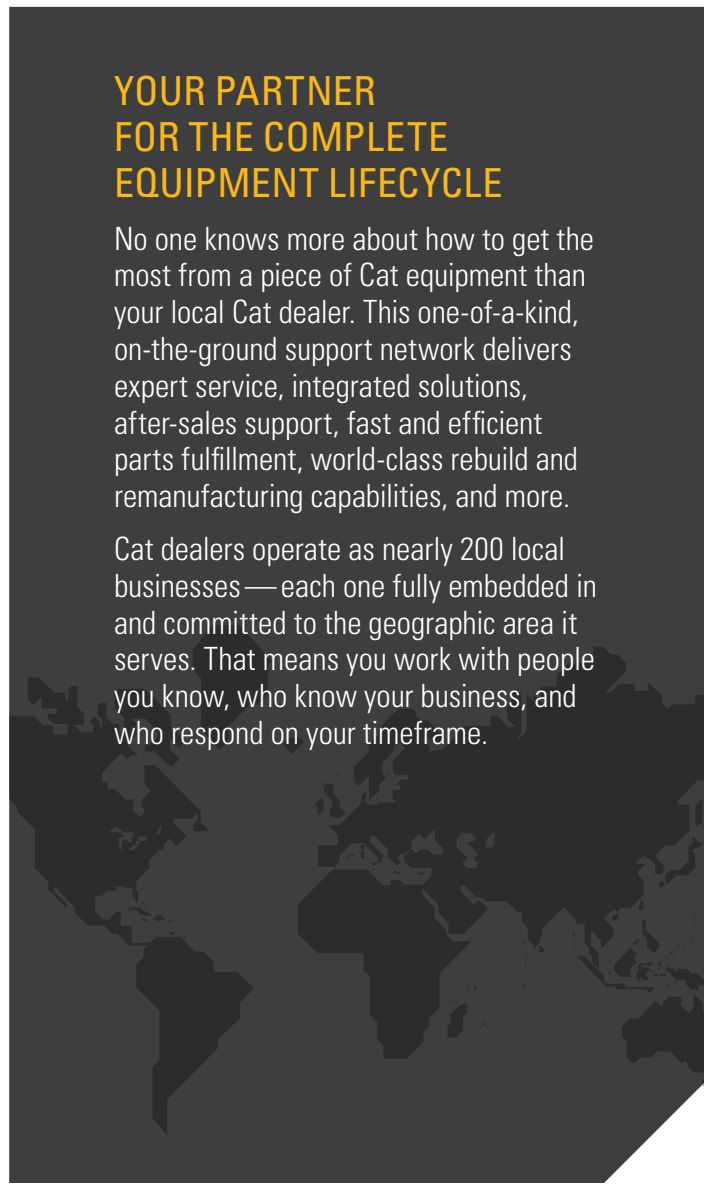
Caterpillar and Cat dealer personnel will partner with you on site to improve the performance not only of your loaders, but of your overall loading and hauling operation. You'll have access to parts and service, and technicians who are focused on helping you optimize repairs to keep machines productive. And we help with training to ensure your operators have the skills and knowledge they need to work as efficiently and productively as possible.

We also work alongside you to ensure you achieve maximum value throughout the life of your equipment. Together with our Cat dealer network, we customize service offerings to provide a maintenance solution that fits your operation — whether you want to perform the majority of service yourself, or you're looking for an onsite partner to manage your maintenance organization. We're also consultants who can help you make smart decisions about buying, operating, maintaining, repairing, rebuilding and replacing equipment.

YOUR PARTNER FOR THE COMPLETE EQUIPMENT LIFECYCLE

No one knows more about how to get the most from a piece of Cat equipment than your local Cat dealer. This one-of-a-kind, on-the-ground support network delivers expert service, integrated solutions, after-sales support, fast and efficient parts fulfillment, world-class rebuild and remanufacturing capabilities, and more.

Cat dealers operate as nearly 200 local businesses — each one fully embedded in and committed to the geographic area it serves. That means you work with people you know, who know your business, and who respond on your timeframe.



BETTER
LOADING
BETTER
HAULING
**BETTER
BOTTOM
LINE**

With a broad lineup of wheel loaders and a truck for every site or application — no matter the size class or drive system — Caterpillar delivers a complete loading and hauling solution that delivers the lowest cost per ton.

Trucks and loaders are ideally matched to optimize the loading and hauling cycle. From iron to engines, hydraulics to electronics, software to hardware, transmissions to ground engaging tools — systems are integrated and work together to deliver optimized performance and a better bottom line.





PASS MATCH

993

777



4

785



6

789



8

TECHNICAL SPECIFICATIONS

See cat.com for complete specifications.

ENGINE		
Engine Model	Cat® C32B	
Emissions	U.S. EPA Tier 4 Final/ EU Stage V or U.S. EPA Tier 2 Equivalent	
Rated Speed	1800 rpm	
Gross Power – SAE J1995 @ 1800 rpm		
Tier 4/HRC	775 kW	1039 hp
Tier 2/LRC	767 kW	1029 hp
Net Power – ISO 14396 @ 1800 rpm		
Tier 4/HRC	764 kW	1024 hp
Tier 2/LRC	757 kW	1015 hp
Net Power – EEC 80/1269 @ 1800 rpm		
Tier 4/HRC	726 kW	974 hp
Tier 2/LRC	716 kW	960 hp
Net Power – ISO 9249 @ 1800 rpm		
Tier 4/HRC	726 kW	974 hp
Tier 2/LRC	716 kW	960 hp
Net Power – SAE J1349 @ 1800 rpm		
Tier 4/HRC	719 kW	964 hp
Tier 2/LRC	710 kW	952 hp
Peak Torque SAE J1995 @ 1250 rpm		
Tier 4/HRC	5470 N·m	4,034 lb ft
Tier 2/LRC	5470 N·m	4,034 lb ft
Bore	145 mm	5.7 in
Stroke	162 mm	6.4 in
Displacement	32.1 L	1,959 in ³
Torque Rise	33%	
+ Standard ambient cooling		

OPERATING SPECIFICATIONS		
Operating Weight (Tier 2 Equivalent)*	133 668 kg	294,687 lb
Operating Weight (Tier 4 Final)*	133 668 kg	294,687 lb
Rated Payload – Standard Lift	27.2 tonnes	30.0 tons
Rated Payload – High Lift	24.9 tonnes	27.5 tons
Bucket Range	12.2-23.7 m ³ 16.0-31.0 yd ³	
Cat Truck Match – Standard Lift	777	
Cat Truck Match – High Lift	777, 785	
Articulation Angle	43 degrees	
* High lift, 50/65-51 (364-6315) tires, standard cooling, 13.8 m ³ (18 yd ³) bucket (496-9912).		

TRANSMISSION		
Transmission Type	Cat Planetary Power Shift	
Forward 1	6.8 km/h	4.2 mph
Forward 2	11.9 km/h	7.4 mph
Forward 3	20.5 km/h	12.7 mph
Reverse 1	7.5 km/h	4.7 mph
Reverse 2	13.1 km/h	8.1 mph
Reverse 3	22.5 km/h	13.9 mph
Direct Drive – Forward 1	Lock-up disabled	
Direct Drive – Forward 2	13.0 km/h	8.0 mph
Direct Drive – Forward 3	22.8 km/h	14.1 mph
Direct Drive – Reverse 1	8.0 km/h	4.9 mph
Direct Drive – Reverse 2	14.2 km/h	8.8 mph
Direct Drive – Reverse 3	25.2 km/h	15.6 mph
+ 50/65-51 (364-6315) calculated speeds		

HYDRAULIC SYSTEM – LIFT/TILT		
Lift/Tilt System – Circuit	Positive Flow Control	
Lift/Tilt System – Pump	Variable Piston	
Maximum Flow at 1,650 rpm	1180 L/min	311 gal/min
Relief Valve Setting – Lift/Tilt	29 500 kPa	4,200 psi
Cylinders – Lift/Tilt	Double-acting	
Lift Cylinder – Bore	267 mm	10.5 in
Lift Cylinder – Stroke	1682 mm	66.2 in
Tilt Cylinder – Bore	235 mm	9.3 in
Tilt Cylinder – Stroke	1040 mm	40.9 in
+ High Lift configuration.		

HYDRAULIC CYCLE TIME	
Rackback	2.4 seconds
Raise	9.2 seconds
Dump	1.8 seconds
Lower	3.8 seconds
Lower Float Down	3.1 seconds
Total Hydraulic Cycle Time	17.2 seconds
+ High Lift configuration, calculated speeds.	

STANDARD AND OPTIONAL EQUIPMENT

Standard and optional equipment may vary. Consult your Cat dealer for details.

POWERTRAIN		
	Standard	Optional
Engine, C32B	x	
Brakes, oil-cooled, multi-disc, service/secondary	x	
Driveline parking brake	x	
Fuel Priming Pump (electric)	x	
Ground level engine shutoff	x	
Precleaner, engine air intake (above hood)	x	
Automatic, ether starting aid	x	
Electronic throttle lock	x	
Planetary powershift, 3F/3R electronic control transmission	x	
Rimpull Control System	x	
Standard ICTC	x	
ICTC with lock up clutch		x
Engine Brake		x

SERVICE		
	Standard	Optional
Case drain filters	x	
VIMS download and Cat® Electronic Technician service port in bumper	x	
Axle ecology drain	x	
Front walkway around cab	x	
Ground-level fast-fill fuel system	x	
Grouped hydraulic pressure ports	x	
Guards, crankcase and power train	x	
Drawbar hitch with pin	x	
Linkage pins, maintenance free	x	
Oil sampling valves	x	
Product Link™	x	
Service center with ground level electrical and fluid connections	x	
Sight gauges for steering, implement and transmission oil	x	
Transmission lockout, bumper	x	
Grease lines	x	
Automatic Autolube		x

COOLING		
	Standard	Optional
Standard ambient package (recommended for site conditions that do not exceed 43° C [110° F])	x	
High ambient package (recommended for site conditions that do not exceed 55° C [131° F])		x

ELECTRICAL AND LIGHTING		
	Standard	Optional
150-amp alternator	x	
Four 1400 CCA batteries	x	
Deutsch terminal connectors	x	
24V starting and charging system	x	
Diagnostic connector starting and charging system	x	
Electrical system, 24 volt	x	
Electronic Service Center	x	
Electronic Transmission Control	x	
Lighting system, halogen (front and rear) lighting, access stairway	x	
Starter receptacle for emergency start	x	
Starter and transmission lockouts in bumper	x	
Product Link (Cellular)		x
Product Link (Satellite)		x

COLD WEATHER		
	Standard	Optional
120V or 240V coolant heating elements (recommended in conditions from -18° C to -30° C [0° F to -22° F])		x
Fuel heater (heated by recirculation using engine heat and a heat exchanger) (recommended in conditions from -18° C to -30° C [0° F to -22° F])		x
-50° C (-58° F) antifreeze		x
Heated Mirrors		x
Heated Seat	x	

SAFETY		
	Standard	Optional
Back-up alarm	x	
Mirrors, rearview (externally mounted)	x	
Seat, trainer with lap belt, 76 mm (3 in) wide	x	
Seat belt, retractable, 76 mm (3 in) wide	x	
Emergency platform egress	x	
Implement lock switch	x	
Stairway, left and right rear access	x	
Steering and transmission lock lever, cab	x	
Toe kicks	x	
LED warning strobe		x
Object detection (radar)		x
Rear vision camera		x
Egress, powered rear access		x
Secondary Steering		x
Wheel Chocks		x

STANDARD AND OPTIONAL EQUIPMENT

Standard and optional equipment may vary. Consult your Cat dealer for details.

OPERATOR ENVIRONMENT		
	Standard	Optional
Premium seat with heated and actively cooled leather, adjustable lumbar support, air adjustable bolsters on the seat and backrest, seat cushion tilt adjustment, and adjustable-length seat cushion	x	
Advisor Display, displays real time operating information, performs calibrations and customizes operator settings	x	
Air conditioner	x	
Air precleaner	x	
Cab, sound suppressed and pressurized, separate external Rollover Protective Structure (ROPS)/Falling Object Protective Structure (FOPS) radio ready for entertainment, includes antenna, speakers and converter (12-volt 10-amp) and power port	x	
Cigar lighter, ashtray	x	
Coat hook	x	
Dual lever lift and tilt function controls	x	
Joystick lift and tilt function controls		x
Digital display on center console: + Gear + Ground speed + Machine hours	x	
Heater, defroster	x	
Horn, electric	x	
Instrumentation, gauges: + Coolant temperature + Fuel level + Hydraulic oil temperature + Power train oil temperature + Tachometer	x	
Light, cab, dome	x	
Lunchbox, beverage and manual holders	x	
Wet-Arm wipers/washers (front and rear): + Intermittent front and rear wipers	x	
AM/FM/CD/MP3 radio		x
Cab precleaner		x
Satellite Sirius radio with Bluetooth®		x
Sun screen		x
Bonded glass, tinted	x	
Rubber-mounted, high-impact resistant solar control glass (Complies with AS/NZS 2080)		x

EFFICIENCY		
	Standard	Optional
Automatic bucket leveler	x	
Automatic lift and lower bucket kickout	x	
Positive Flow Control implement system	x	
ICTC with lock-up clutch		x
Load-sensing steering	x	

MACHINE CONTROL AND GUIDANCE		
	Standard	Optional
Cat Terrain ready	x	

RIMS AND TIRES		
	Standard	Optional
40.00x51 spare rim		x
Tires – 50/65R51		x
Tires – 50/65-51		x
Axle oscillation limit stop		x

LOAD AND CARRY OR EXTENSIVE TRAMMING		
	Standard	Optional
Ride Control		x
Rear Roding Fenders		x

LINKAGE		
	Standard	Optional
Standard lift (30 tons face)	x	
High lift (27.5 tons face)		x

SOUND SUPPRESSION		
	Standard	Optional
Sound-suppression package		x



993 WHEEL LOADER

For more complete information on Cat products, dealer services and industry solutions, visit us at www.cat.com

PEDJ1167-01

Materials and specifications are subject to change without notice. Featured machines in photos may include additional equipment. See your Cat dealer for available options.

© 2023 Caterpillar. All Rights Reserved. CAT, CATERPILLAR, LET'S DO THE WORK, their respective logos, "Caterpillar Corporate Yellow", the "Power Edge" and Cat "Modern Hex" trade dress as well as corporate and product identity used herein, are trademarks of Caterpillar and may not be used without permission.

